

M-85

85 TON PAYLOAD

LECTRA
HAUL[®]



MANUFACTURED ONLY BY UNIT RIG & EQUIPMENT CO.



SPECIFICATIONS



M-85

LECTRA HAUL

ENGINE

700 to 1000 hp Diesel Engine

FUEL TANK

Integral Saddle Mounted Fuel and Hydraulic Oil Tanks
500 Gallons (1893 Liters) Fuel
100 Gallons (379 Liters) Hydraulic Oil

DRIVE SYSTEM

Diesel Electric With Individual Wheel Motors In Rear
Duals

ENGINE DRIVEN ACCESSORIES

Battery Charging Alternator
Air Compressor
Hydraulic Pumps
Blower for cooling air to Wheel Motors & Alternator

STEERING

Full time Power Steering with Minimum turning Radius
30'-0" (9.14 M)

RETARDING

Dynamic braking on rear wheels utilizes wheel motors as
generators and dissipates vehicle kinetic energy into air
cooled resistors.

BRAKES

Air over hydraulic drum brakes on front, disc brakes on
drive axle

FRONT WHEELS

Solid disc wheels mounted on tapered roller bearings

SUSPENSION

DYNAFLOAT column type suspension on all axles

CAB

One Man Cab — Fully protected by safety glass
Equipped with fully adjustable seat
Cab heating and defrosting standard
Reverse Sloping windshield

STANDARD EQUIPMENT

Horn, headlights, taillights, back-up lights, foot operated
acceleration and dynamic brake controls; all necessary
gauges and meters, hand operated parking and emergency
brake controls; windshield wiper, tachometer and speed-
ometer

TIRES

6 — 24.00 X 49 (.610 M X 1.24 M)
Rim Size 22" X 4 1/2" (.559 M X .113 M)
Static Loaded Radius — 46.4" (1.18 M)
Same tire & rim fits all positions
OPTIONAL: 27.00 X 49 (.69 M .00 X 1.24 M)

FRAME

Double Box Section 100,000 psi Minimum Yield
High Strength Steel
Side Plate Thickness 3/8" (.010 M) & 3/4" (.019 M)
Top and Bottom Plate Thickness 1" (.025 M)

DUMP BODY

All construction to be 100,000 psi yield high strength
steel
Bottom Plates 3/4" (.019 M) abrasion resistant
Side Plates 3/8" (.010 M)
Front Plate 1/2" (.013 M)

HOIST

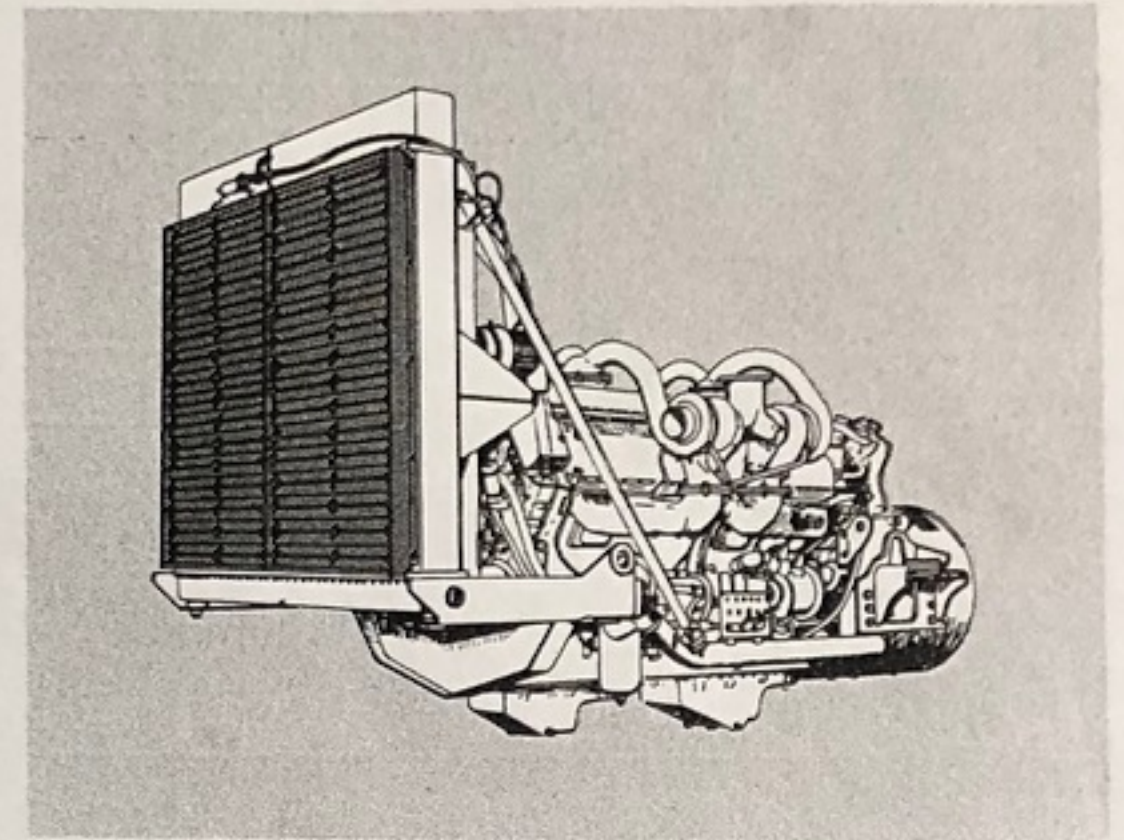
Two dumping cylinders cushioned at each end of the
stroke
Time to dump — 19 seconds

WEIGHTS

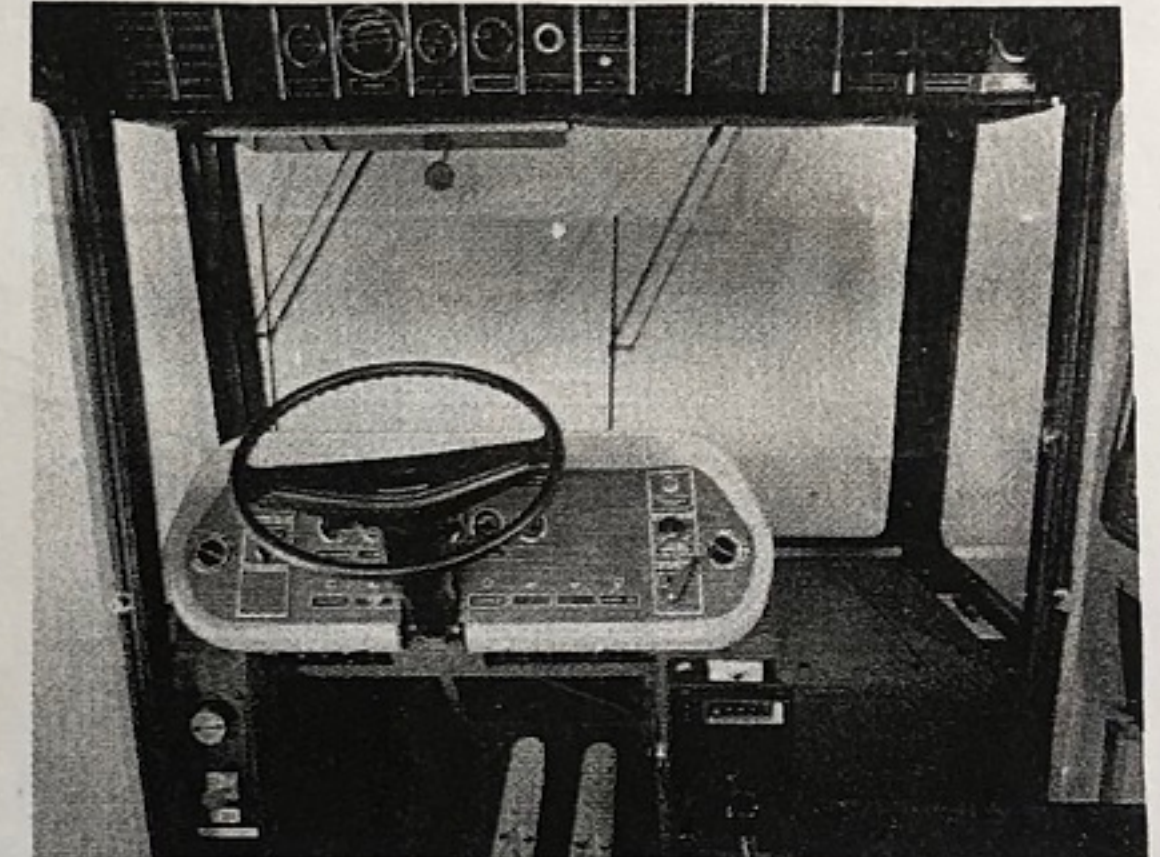
	Net Vehicle	Gross Vehicle 85 Short Ton Payload (77.110 MT)
Front Axle	52,878 lbs (23,981 kg)	94,710 lbs (42,952 kg)
Drive Axle	64,272 lbs (29,148 kg)	192,440 lbs (87,274 kg)
TOTAL	117,150 lbs (53,129 kg)	287,150 lbs (130,227 kg)

LIFT OUT POWER PACKAGES The lift out power package is designed to facilitate maintenance and permit rapid change-out of the engine and traction generator.

Terminal blocks have been provided in locations common to all engine packages to permit fast disconnect of the necessary air, fuel and oil lines. Disconnect plugs have been provided for the electrical connections to the package. A standby engine package can be utilized to maximum advantage since the interchangeability of these control items is assured from unit to unit.

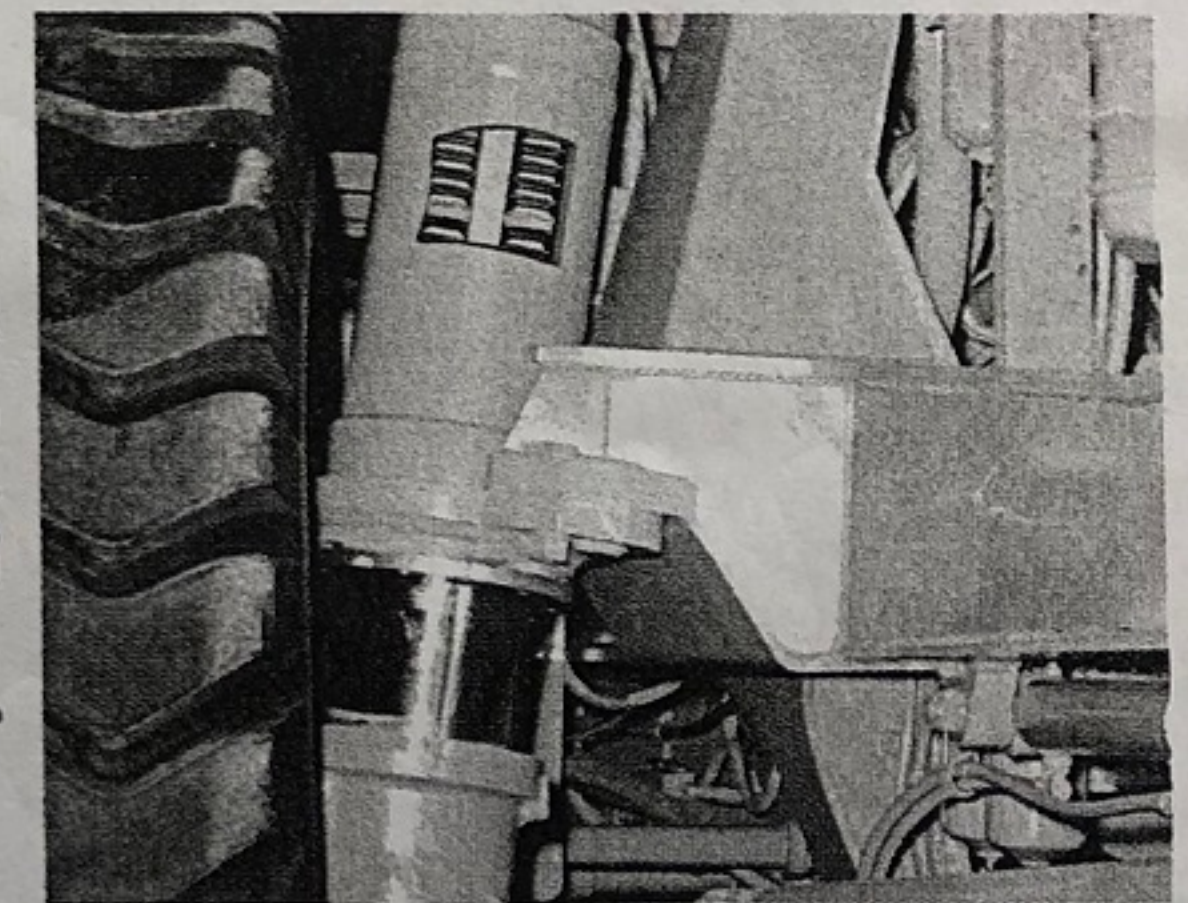


EASE OF CONTROL The highly efficient electric drive system frees the driver from shifting, clutching and tachometer watching. Vehicle operation is made easy for maximum productivity and safety. The operating controls consist only of foot operated throttle, dynamic brake, and hydraulic brake, in addition to steering wheel and a range selector with only three positions — forward, neutral, and reverse. The simple control system, coupled with a high degree of maneuverability, results in faster, safer, more precise spotting at the shovel and at the dump.

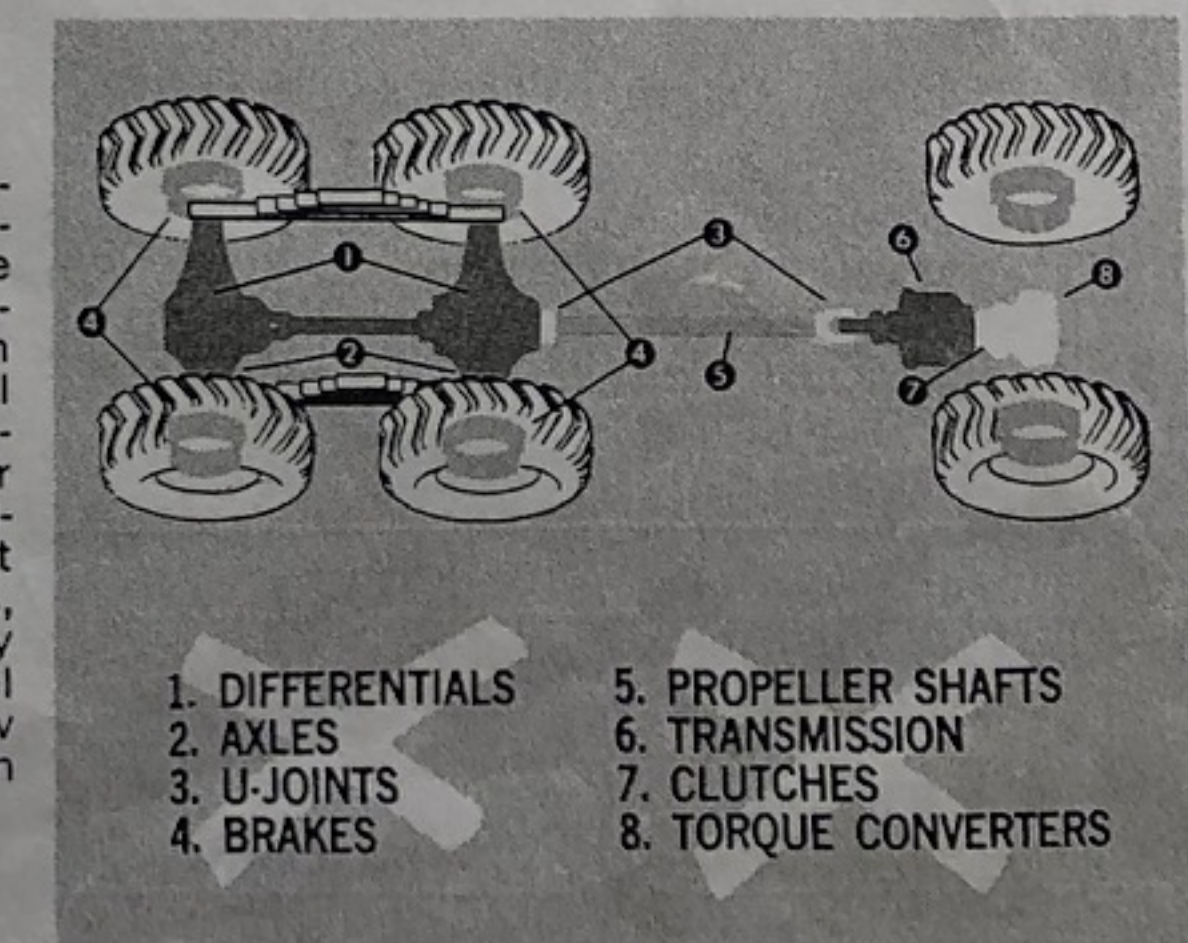


SUPERIOR RIDE The Lectra Haul literally floats on rubber. The truck employs a DYNAFLOAT* rubber cushioned suspension unit at each wheel. This unique system achieves a superior ride, improved stability (due to wide spacing), and ease of replacement or maintenance. These column type suspensions tremendously reduce the impact, both on the dump body and tires, caused by rocks dropping into the dump body and dynamic loads when underway.

*PATENT NUMBERS: 3,259,397 • 3,307,855 • 3,372,947

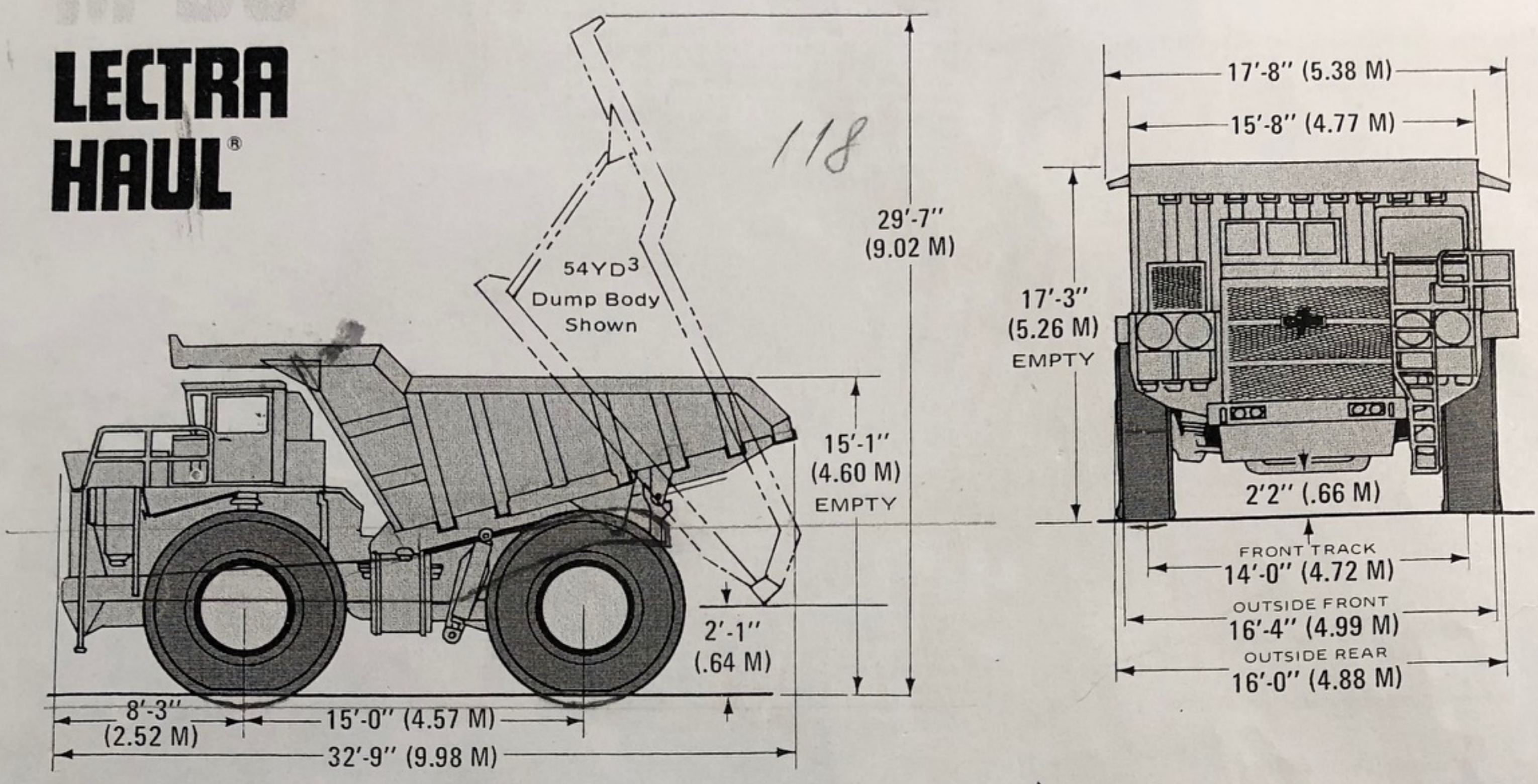


LOW MAINTENANCE COST Elimination of torque converters, transmissions, propeller shafts and drive axles reduces drive system maintenance. Electrodynamic braking, an inherent feature of the electric wheel drive system, provides highest continuous braking without fading or mechanical wear. This results in longer life and lower maintenance cost for the four-wheel hydraulic brakes, which are used only for emergency stops and parking. The electric wheel drive system provides long life, low maintenance expense, and maximum availability.



M-85

**LECTRA
HAUL®**



CAPACITY AND LOADING HEIGHTS

STRUCK	DUMP BODY WIDTH 15'-8" (Rock)				17'-6" (Rock)				15'-8" (Taconite)			20'-0" (Coal)
	54	60	66	69	60	67	74	78	47	55	60	101
CUBIC YARDS	54	60	66	69	60	67	74	78	47	55	60	101
CUBIC METERS	41.3	45.9	50.5	52.0	45.9	51.2	56.6	59.6	35.9	42.1	45.9	77.3

2:1 HEAPED

CUBIC YARDS	65	72	80	84	78	84	90	96	63	78	81	121
CUBIC METERS	49.7	55.1	61.2	64.2	59.6	64.2	68.8	73.4	48.2	59.7	61.9	92.6

LOADING HT. EMPTY

FEET	15'-1"	15'-10"	16'-7"	16'-11"	14'-8"	15'-6"	16'-4"	16'-9"	14'-2"	15'-1"	15'-7"	17'-6"
METERS	4.60	4.83	5.05	5.16	4.47	4.72	4.97	5.10	4.32	4.59	4.75	5.33

UNIT RIG & EQUIPMENT CO.

POST OFFICE BOX 3107 TULSA, OKLAHOMA 74101
PHONE (918) 446-5581

CABLE ADDRESS: UNITRIG TULSA
TELEX: 49-2409 TWX: 910-845-2192

