



TW110

WHEELED EXCAVATOR



Specifications

Operating weight	24,250 lbs (11,000 kg)
Engine power	100 HP (74.9 kW)
Bucket capacity	5.26-16.85 ft ³ (149-477 l)
Dig depth	14' 2" (4.31 m)
Reach	27' 3" (8.30 m)

Features

- ▶ Short-tail machine
- ▶ Extra-wide blade for dozer applications
- ▶ Field-tested TPA for extreme reach and dig depth
- ▶ Comfort cab with perfect all-round visibility
- ▶ Increased productivity thanks to load sensing hydraulics
- ▶ Knickmatik® allows for working closely alongside walls
- ▶ Wide range of proven working tools

WORKS FOR YOU.™

SPECIFICATIONS

OPERATING DATA, STANDARD EQUIPMENT

Operating weight (two-piece articulated boom "TPA") acc. to ISO 6016	24,250 lbs (11,000 kg)
Total length, travel position (TPA boom)	19' 3" (5,860 mm)
Total height, travel position (TPA boom)	13' (3,975 mm)
Transport dimensions: TPA boom (L x H)	22' 4" x 9' 10" (6,800 x 2,990 mm)
Total width (twin tires)	8' 2" (2,500 mm)
Total height (top of cab)	9' 10" (2,990 mm)
Tread width	6' 4" (1,942 mm)
Wheelbase	8' 5" (2,570 mm)
Ground clearance below cardan shaft	17" (440 mm)
Turning radius	23' 7" (7,200 mm)
Uppercarriage tailswing	5' 3" (1,600 mm)
Uppercarriage frontswing	9' 10" (3,000 mm)
Working envelope 180°	15' 1" (4,600 mm)
Working envelope 360°	19' 8" (6,000 mm)
Bucket digging force acc. to ISO 6015	16,186 lbf (72,000 N)
Stick digging force acc. to ISO 6015	13,151 lbf (58,500 N)

ENGINE

Manufacturer, model	Deutz, TCD 2012 L04
Type	4-cylinder turbocharged diesel engine, Tier 3
Combustion	4-stroke cycle, direct fuel injection
Displacement	247 in ³ (4,040 cm ³)
Net power rating at 2000 rpm (SAE J 1349)	100 HP (74.9 kW)
Torque	295 lbf ft (400 Nm) at 1,600 rpm
Cooling system	Water

ELECTRICAL SYSTEM

Nominal voltage	12 V
Battery	12 V / 135 Ah
Generator	14 V / 95 Ah
Starter	12 V / 4.2 hp (3.1 kW)

TRANSMISSION

Hydrostatic travel drive with automatic adjustment of drawbar pull and speed. 4-wheel drive from reduction gear on front axle via cardan shaft to rear axle. Infinitely variable speed control forward and reverse.

2 speed ranges:

"Low"	3.7 mph (0-6 kph)
"High"	12.4 mph (0-20 kph)

AXLES

Front: oscillating planetary drive axle, oscillating angle 13°.

Rear: rigid planetary drive axle.

TIRES

Standard	9.00-20, 14 PR twin tires
----------	---------------------------

BRAKES

Service brake: Hydraulic pump accumulator two-circuit brake, acting on oil-immersed multi-disc brakes of front and rear axle.

Excavator brake: Acting on front and rear axle due to lockable service brake.

Auxiliary brake: Hydrostatic travel drive in closed circuit acting as non-wearing auxiliary brake.

Parking brake: Hydraulic spring-loaded brake, electrically actuated.

STEERING

Fully hydraulically controlled front axle with integrated steering cylinder.	
Max. steering angle	30°



SWING SYSTEM

Hydrostatic drive with 2-stage planetary gear and axial piston fixed displacement motor, also acts as wear-resistant brake. In addition, automatically controlled spring-loaded multi-disc brake acting as parking brake.

Swing speed	0-10 rpm
-------------	----------

KNICKMATIK®

Lateral parallel adjustment of boom arrangement at full dig depth.

Angle of articulation / lateral adjustment left	54° / 2' 6" (760 mm)
Angle of articulation / lateral adjustment right	54° / 3' 5" (1,030 mm)

FLUID CAPACITIES

Fuel tank	63 gal (240 l)
Hydraulic system (incl. tank 60 l)	50 gal (190 l)

HYDRAULIC SYSTEM

Travel hydraulics: Closed circuit, independent from working hydraulics.

Pump capacity, max.	48 gpm (180 l/min)
Working pressure, max.	6,090 psi (420 bar)

Working hydraulics: Axial-piston variable displacement pump with load sensing, coupled with a load-independent flow distribution (LUDV). Simultaneous, independent control of all movements. Sensitive maneuvers irrespective of loads.

Pump capacity, max.	50 gpm (190 l/min)
Working pressure, max.	4,790 psi (330 bar)

The thermostatically controlled oil circuit ensures that the oil temperature is promptly reached and avoids overheating. Return filter installed in oil tank allows for eco-friendly replacement of filter elements.

Triple gear pump for all positioning and swing movements. Pressure cut-off valve for sensitive and energy-saving swing movements.

Pump capacity, max.	10 + 7 + 3 gpm (39 + 26 + 11 l/min)
Working pressure, max.	3,335 psi (230 bar)

Control circuit for work attachments (proportionally operated):

Pump capacity, adjustable	5-34 gpm (20-130 l/min)
Working pressure, max.	4,350 psi (300 bar)

Two servo-assisted joystick controls (ISO) for excavator operations.

CAB

Spacious, sound-insulated full-vision steel cab (ROPS certified). Sliding window in cab door. Safety glass windows, thermo windows tinted in green. Skylight thermo window, bronze tinted. Panoramic rear window. Front window supported by pneumatic springs, lockable for ventilation and slidable under cab roof. Windshield washer system. Storage compartment. Preparation for radio installation. Left-hand outside rear-view mirror.

Cab heating with front window defroster by coolant heat exchanger with 3-stage fan. Fresh air and recirculating air filters.

Operator's seat MSG 85 (comfort version), hydraulic damping, extra-high backrest, tilt-adjustable armrests, longitudinal-horizontal suspension, mechanical lumbar support. Lap belt.

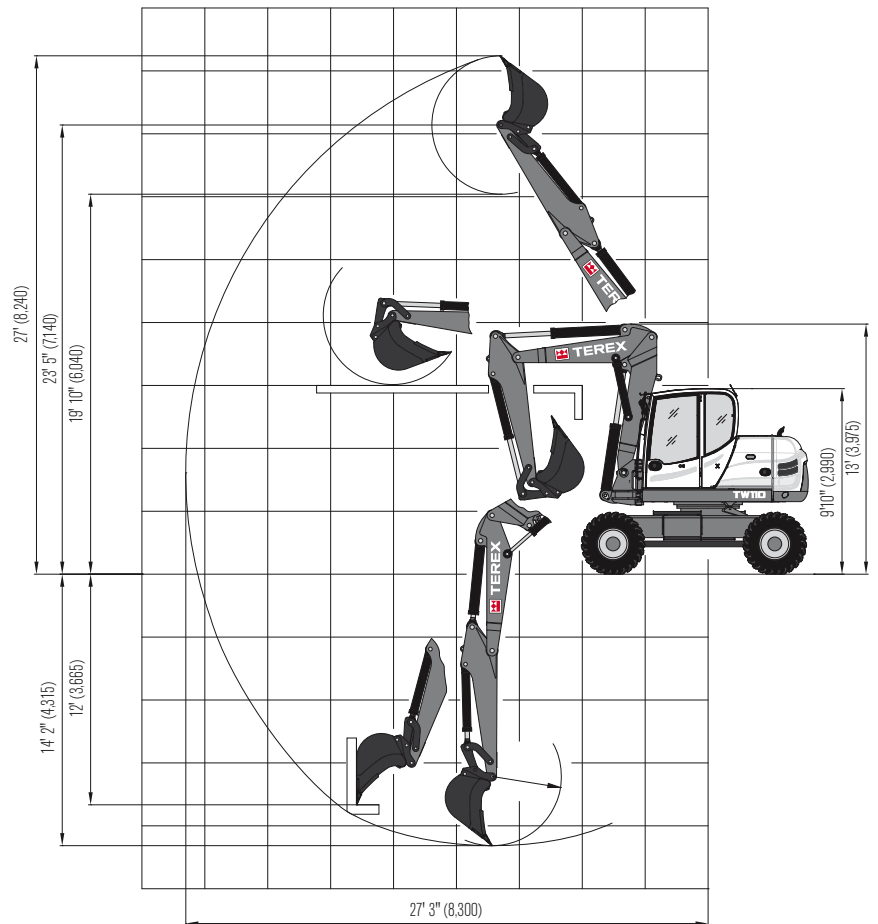
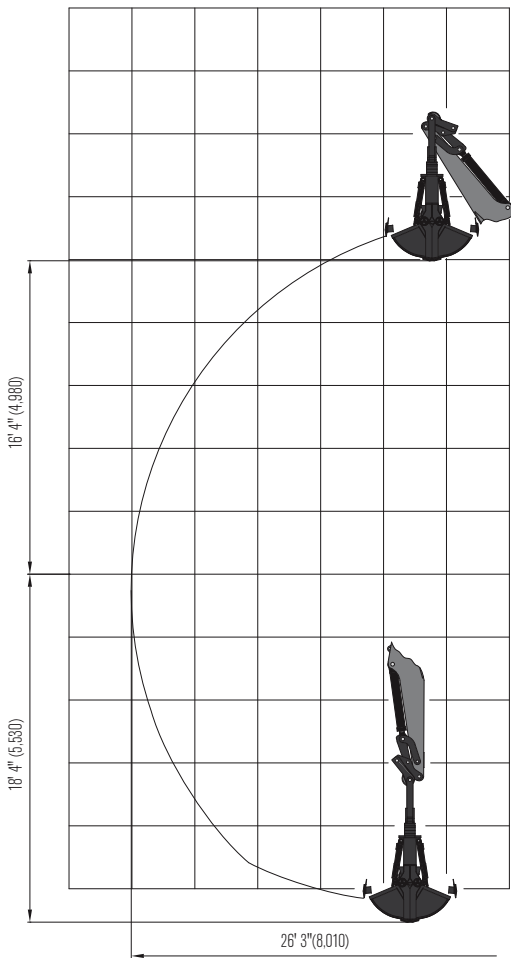
Instrument panel on the right hand side of the operator's seat with visual & acoustic warning device, hour-meter and safety module.

Working flood lights Halogen H-3.

Sound level values in compliance with EC-directives.

WORKING RANGES & DIMENSIONS: TWO-PIECE ARTICULATED BOOM

TW110



LIFTING CAPACITIES

Bucket hinge height Dipperstick 6'7" (2,000 mm)		Load radius from center of ring gear											
		9'10" (3.0 m)		13'1" (4.0 m)		16'5" (5.0 m)		19'8" (6.0 m)		22'12" (7.0 m)		23'4" (7.1 m)	
		End	Side	End	Side	End	Side	End	Side	End	Side	End	Side
9'10" (3.0 m)	S	-	-	6.86 (3.11)	5.80 (2.63)	5.38 (2.44)	4.21 (1.91)	5.27 (2.39)	2.89 (1.31)	4.37 (1.98)	2.03 (0.92)	-	-
	T	-	-	5.64 (2.56)	5.29 (2.40)	3.88 (1.76)	3.77 (1.71)	2.82 (1.28)	2.60 (1.18)	2.03 (0.92)	1.83 (0.83)	-	-
4' 11" (1.5 m)	S	10.8 (4.91)	8.53 (3.87)	6.86 (3.11)	5.53 (2.51)	6.00 (2.72)	3.95 (1.79)	5.97 (2.71)	2.76 (1.25)	4.28 (1.94)	1.96 (0.89)	4.17 (1.89)	1.83 (0.83)
	T	8.55 (3.88)	7.8 (3.54)	5.53 (2.51)	5.07 (2.30)	3.90 (1.77)	3.57 (1.62)	2.65 (1.20)	2.49 (1.13)	1.83 (0.83)	1.72 (0.78)	1.76 (0.80)	1.63 (0.74)
0 m	S	14.33 (6.50)	7.94 (3.60)	8.55 (3.88)	5.20 (2.36)	6.61 (3.00)	3.70 (1.68)	5.67 (2.57)	2.69 (1.22)	3.95 (1.79)	1.94 (0.88)	3.95 (1.79)	1.87 (0.85)
	T	8.05 (3.65)	7.30 (3.31)	5.18 (2.35)	4.87 (2.21)	3.64 (1.65)	3.40 (1.54)	2.60 (1.18)	2.47 (1.12)	1.85 (0.84)	1.74 (0.79)	1.81 (0.82)	1.68 (0.76)
2' 11" (-0.9 m)	S	16.0 (7.26)	7.30 (3.43)	9.37 (4.25)	4.76 (2.16)	7.36 (3.34)	3.31 (1.50)	5.53 (2.51)	2.45 (1.11)	3.90 (1.77)	1.90 (0.86)	-	-
	T	7.56 (3.43)	7.16 (3.25)	5.00 (2.27)	4.50 (2.04)	3.51 (1.59)	3.15 (1.43)	2.54 (1.15)	2.27 (1.03)	1.92 (0.87)	1.79 (0.81)	-	-

At the above loads (all values in lbs x 1,000 resp. metric tons) are in compliance with SAE J 1097. They do not exceed 87% of hydraulic lifting capacity or 75% of tipping capacity. In each case, the smaller value is indicated. All values were determined with load hook. In the event of an attached bucket the difference weights bucket minus load hook must be deducted from the permissible payloads. When used for crane operations, excavators must be equipped with hose-rupture safety valves and overload warning device.

Working equipment: Two-piece articulated boom, twin tires, dipperstick 6' 7" (2,000 mm)

Abbreviations: S = Supported by blade, T = Traveling

DIMENSIONS

Fig. 1: Excavation within the entire width of the machine

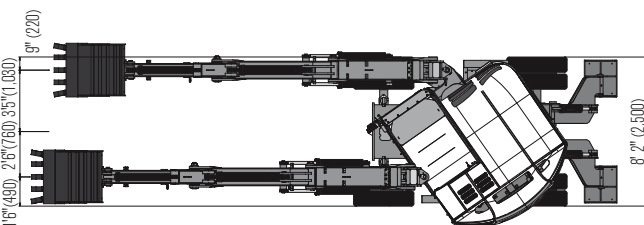


Fig. 2: Working envelope

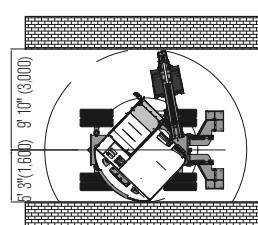
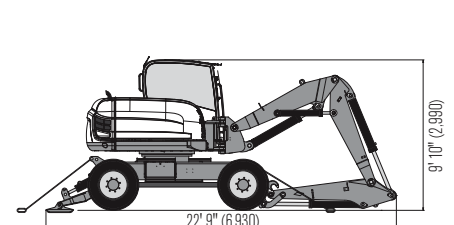


Fig. 3: Transport position



WORK ATTACHMENTS

BUCKETS

Bucket, QAS	16" (400 mm) wide, capacity 5.26 ft ³ (149 l)
Bucket, QAS	20" (500 mm) wide, capacity 7.06 ft ³ (200 l)
Bucket, QAS	24" (600 mm) wide, capacity 8.97 ft ³ (254 l)
Bucket, QAS	28" (700 mm) wide, capacity 10.9 ft ³ (308 l)
Bucket, QAS	31" (800 mm) wide, capacity 12.9 ft ³ (364 l)
Bucket, QAS	35" (900 mm) wide, capacity 14.9 ft ³ (421 l)
Bucket, QAS	39" (1,000 mm) wide, capacity 16.85 ft ³ (477 l)
Ditch-cleaning bucket, QAS	59" (1,500 mm) wide, capacity 13.1 ft ³ (371 l)
Swing bucket, QAS	59" (1,500 mm) wide, capacity 13.1 ft ³ (371 l)
Swing bucket, QAS	71" (1,800 mm) wide, capacity 15.2 ft ³ (430 l)

OPTIONAL EQUIPMENT

TIRES

600/40-22.5 TL Mitas (single wide-base tires)

HYDRAULIC SYSTEM

Hydraulic installation for quick-attach system	Biodegradable hydraulic oil / ester-based HLP 68 (Panolin)
Open return	Conversion kit from ISO controls to Schaeff controls
Hose-rupture / load-retaining valves for dipperstick and intermediate boom	Terex 'Fingertip' control incl. second additional control circuit on left joystick
Hydraulic boom height limitation	Bucket control change-over (in case of forklift operation)
Float position - dozer blade	

DRIVER'S STAND

Operator's seat MSG 95 (premium version), air damping, extra-high backrest and tilt-adjustable armrests, longitudinal-horizontal suspension, seat and backrest heating, pneumatic lumbar support.

CAB

Lighting package: 1 double beam working floodlight - cab-mounted rear center, 1 working floodlight cab-mounted - front right	FOPS - skylight guard
Sliding window on right-hand side.	Yellow beacon

www.terexconstruction.com

Effective Date: February 2011. Product specifications and prices are subject to change without notice or obligation. The photographs and/or drawings in this document are for illustrative purposes only. Refer to the appropriate Operator's Manual for instructions on the proper use of this equipment. Failure to follow the appropriate Operator's Manual when using our equipment or to otherwise act irresponsibly may result in serious injury or death. The only warranty applicable to our equipment is the standard written warranty applicable to the particular product and sale and Terex makes no other warranty, express or implied. Products and services listed may be trademarks, service marks, or trade names of Terex Corporation and/or its subsidiaries in the USA and other countries. All rights are reserved. Terex is a registered trademark of Terex Corporation in the USA and many other countries. © 2013 Terex Corporation. (R1_230113)

Terex Construction 8800 Rostin Road, Southaven, MS 38671 USA
Tel +1 (888) 90-TEREX www.terex.com



GRABS

Clamshell grab GS 3325, grab swing brake	set of shells 13" (325 mm) wide, capacity 5.3 ft ³ (150 l)
Clamshell grab GS 3400, grab swing brake	set of shells 16" (400 mm) wide, capacity 7.06 ft ³ (200 l)
Clamshell grab GS 3500, grab swing brake	set of shells 20" (500 mm) wide, capacity 8.83 ft ³ (250 l)
Clamshell grab GS 3600, grab swing brake	set of shells 24" (600 mm) wide, capacity 11.5 ft ³ (325 l)
Ejector	

OTHER WORK ATTACHMENTS

Ripper tooth / QAS (1 tooth)	Cutting unit WS30
Hydraulic hammer	Quick-change adapter for hydraulic hammer
Auger	Bolt-on load hook for bucket rod
Load hook integrated in quick-attach system	Fork carrier, 4' 1" (1,240) mm wide
Further work attachments available on request	Forks, 3' 8" (1,120 mm) long, 4" (100 mm) wide, 2" (45 mm) high

ENGINE

Diesel exhaust cleaner	Catalyst
------------------------	----------

OPTIONAL SUPPORT/DOZER SYSTEMS

Rear support blade, 8' 2" (2,500 mm) wide, incl. outrigger legs
Rear outrigger plates, flat, oscillating, incl. outrigger legs
Rear outrigger plates, rubber-coated, oscillating, incl. outrigger legs
Front dozer blade, 8' 2" (2,500 mm) wide, with installation and actuation

OTHER OPTIONAL EQUIPMENT

Klimatronic	Working floodlight boom-mounted, left or right
Quick-attach system, mechanical (genuine Lehnhoff system), type MS08	Anti-theft device (immobilizer)
Quick-attach system, hydraulic (genuine Lehnhoff system), type HS08	Electronic immobilizer, keypad operation
Rear fog lamp	Engine-independent diesel heater with fresh air circulation and timer
Additional tool box	Travel drive shut-off in case of hand-throttle actuation
Steering change-over in case of blade operation	Electrical refueling pump
Automatic idling system	Special coating / adhesive films
Additional rear weight, 772 lbs (350 kg)	Further optional equipment available on request

WORKS FOR YOU.™