

10-389

NOTES FOR ASSEMBLY

RUSTON BUCYRUS CRANE

All holes will need to be drilled for clearance. This should be done before commencing assembly. Drills of 1.6mm and 1.0mm will be required. It is best to do a "dry run" first to familiarise yourself with the components and ensure they fit properly.

It may be useful to drill a small hole in each drum to provide an anchor point.

It is best to start with the crawler assembly.

Note that the tracks should be assembled around the sprocket unit.

Some filing may be necessary to ensure correct fitting.

Fix the completed track assemblies to the turntable ensuring they are square and then fit the drive chains noting that the short section of chain fits above the joint between the side frame and turntable.

The base of the cab contains the winding drum, Engine, seat and side frames.

Again - drill all holes first.

Carefully clean up the shafts of the winding drums

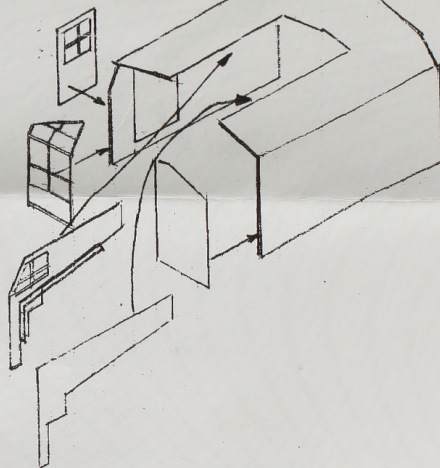
So that they are a smooth fit in the side frames.

A small amount of resistance will help to hold the Drum in position for adjusting the angle of the Boom etc.

When fitting the engine make sure there is enough clearance by the radiator against the inner cab wall.

The cab shell should be completed, painted, glazed and left separate so that it can be removed in order to adjust the winding drums via the screwdriver slot in the end of the shaft.

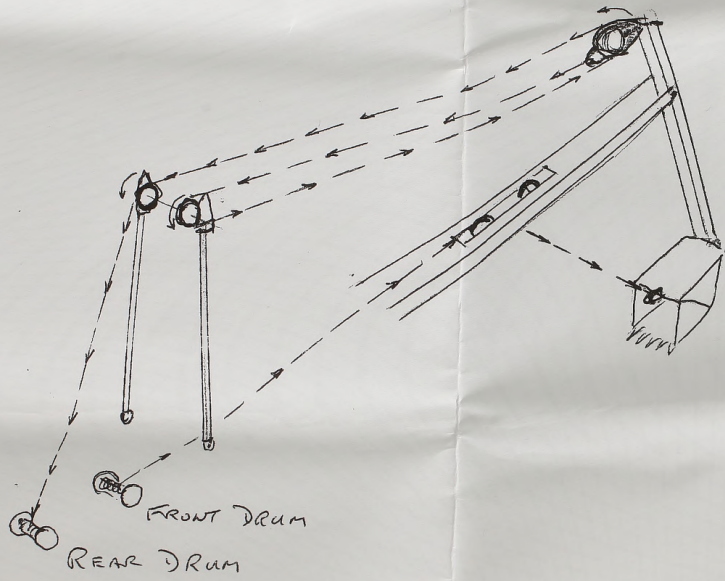
Make exhaust from steel rod

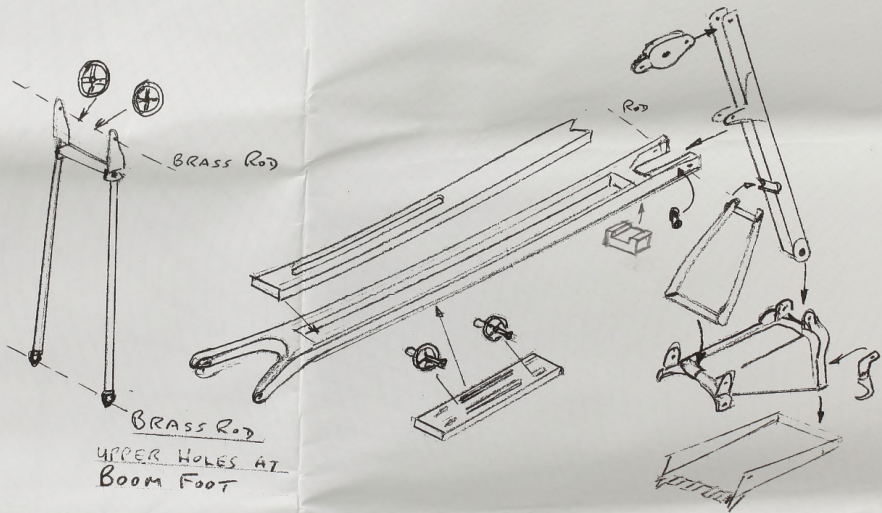


Should any parts be missing or damaged, please contact:

**BILL BARNES - 5 BRAMLEY DRIVE,
COLKIRK, FAKENHAM, NORFOLK. NR21 7JH
Tel: 01328 863938**

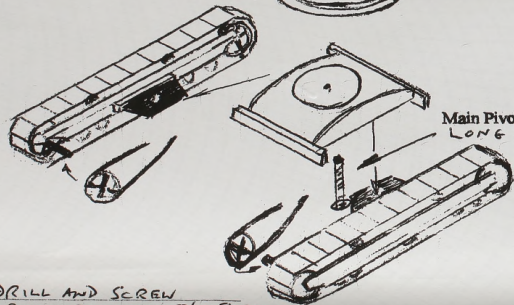
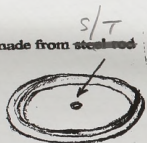
BACK HOIST RIGGING.





BACKHOE ASSEMBLY

Drill 1.6 clearance for main pivot made from steel rod
Approx. ~~1.6~~ long



DRILL AND SCREW TOGETHER WITH S/T SCREWS
NOTE, TRACKS ARE "HANDIED"

Anchor Point on Boom

CRANE REEVING

'A' Frame

Rear Drum

Main Pivot LONG S/T SCREW

Suspension Sheaves at Boom point

Shovel Reeving

Padlock Sheave

Anchor Point on Boor

Yoke Sheave

Anchor Point

'A' Frame

Yoke Sheave

Front Drum

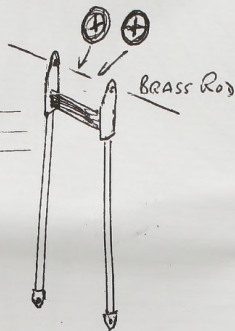
Rear Drum

Should any parts be missing or damaged, please contact:

BILL BARNES - 5 BRAMLEY DRIVE
COLKIRK, FAKENHAM, NORFOLK. NR21 7JH
Tel: 01328 863938



IF USING "A" FRAME
FIT TO BOOM FOOT
IN UPPER HOLES



Fit length of pin

BRASS Rod

Anchor point

anchor hole

S/T SCREW

Ensure clearance from inner wall

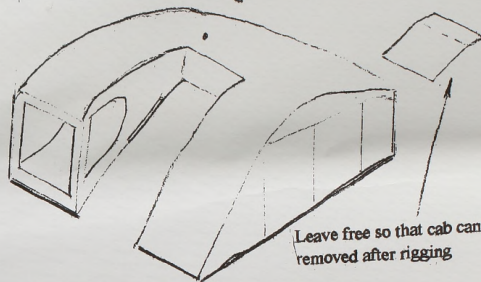
Fit as far back as possible

Assemble brackets and small drum
to floor if using
Drag Bucket version

Main Pivot
S/T SCREW

Drill 1.0mm and use brass rod for pivot on boom foot

Make exhaust from steel rod



Leave free so that cab can
be removed after rigging

Leave upper part of cab removable so that drums
can be adjusted if required

Should any parts be missing or damaged, please contact:

**BILL BARNES - 5 BRAMLEY DRIVE,
COLKIRK, FAKENHAM, NORFOLK. NR21 7JH
Tel: 01328 863938**

S/T SCREW. DRILL AND FIT ABOUT 3mm DEEP.
LEAVE MOVABLE FOR WINCH ADJUSTM