

**The accessory programme
of the king's class.**

**menzi
muck**



**Buckets
Grabs
Quick changers
Swivel heads
Tiltrotator
Impact hammers
Winches
Mulching units
Milling units
others**

The buckets

Design

You have gone for the original Hardox bucket - a quality tool in a tough design. The buckets certified with the „Hardox in my Body“ label have a guaranteed long life expectancy.

Kinematics

You have also chosen the proper kinematics. Opening and closing angles are designed specifically for the Menzi Muck.

Blades

The buckets are constructed with wear-resistant, fine-grained steel blades (Hardox 400). Material thicknesses of 25 or 30 mm are used, depending on size. The blade width of up to 250 mm is matched to the span of the bucket. This achieves outstanding stability.

Bucket base and side parts

Additional Hardox anti-wear strips (material thickness = 6-8 mm) reinforce the Hardox bases on the backhoes. The side tips are also produced from anti-wear Hardox 400. The Hardox bases of the grading bucket are produced with material thicknesses of up to 12 mm.

Grading bucket

The hydraulic slewable grading buckets are fitted with a large-dimension cylinder featuring check valves. They can be swivelled 50 degrees to both left and right.

Upon request ...

all buckets are available with alternative cutting widths, without teeth (blade only), with attaching blades and various quick-change mountings.

from own production



mit ESCO-teeth
and transport aid

Dimensions digging buckets

Menzi Muck	Cutting width	Weight	Capacity	Blade	Bucket base	Teeth
M5	400 mm	211 kg	170 l	30x250 mm	8+8 mm	3
M5	600 mm	271 kg	420 l	30x250 mm	8+8 mm	4
M5	800 mm	320 kg	550 l	30x250 mm	8+8 mm	5
M5	1000 mm	375 kg	525 l	30x250 mm	8+8 mm	6
M3	400 mm	170 kg	140 l	25x200 mm	6+6 mm	3
M3	600 mm	210 kg	230 l	25x200 mm	6+6 mm	4
M3	800 mm	250 kg	330 l	25x200 mm	6+6 mm	5
M3	1000 mm	300 kg	430 l	25x200 mm	6+6 mm	6

Dimensions grading bucket rigid

Menzi Muck	Cutting width	Weight	Capacity	Blade	Bucket base
M5	1300 mm	360 kg	540 l	30x250 mm	10 mm
M5 / M3	1500 mm	420 kg	680 l	30x250 mm	12 mm
M3	1300 mm	295 kg	420 l	25x200 mm	10 mm

Dimensions grading bucket hydraulically slewable

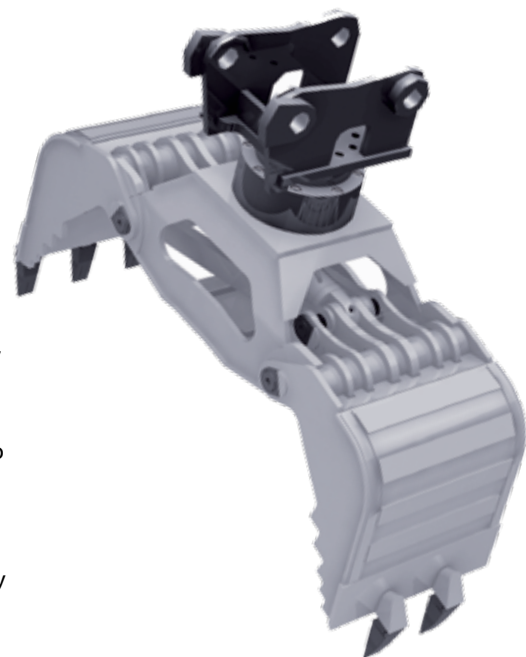
Menzi Muck	Cutting width	Weight	Capacity	Blade	Bucket base
M5	1400 mm	570 kg	590 l	30x250 mm	12 mm
M3	1200 mm	470 kg	420 l	25x200 mm	10 mm

Dimensions sifting bucket

Menzi Muck	Cutting width	Weight	Capacity	Blade	Partition width	Partition pitch
M5 / M3	1300 mm	360 kg	540 l	30x250 mm	8 mm	32 mm
M5 / M3	1500 mm	400 kg	680 l	30x250 mm	8 mm	33 mm

The universal grabs

from own production



Full swivel

The over-dimensioned, wear-free hydraulic three-phase motors in a compact design are rated not only for high axial but also high radial loads.

Protected mechanism

The cross-brace accommodates both: The powerful hydraulic cylinder and the synchronous steering mechanism.

Tooth system

Teeth angled slightly inwards ensure optimised grab characteristics, even with maximum opening widths.

Under control

The cylinder for the clam shell closing function is equipped with a check valve. This prevents the clam shells being opened accidentally.

Control

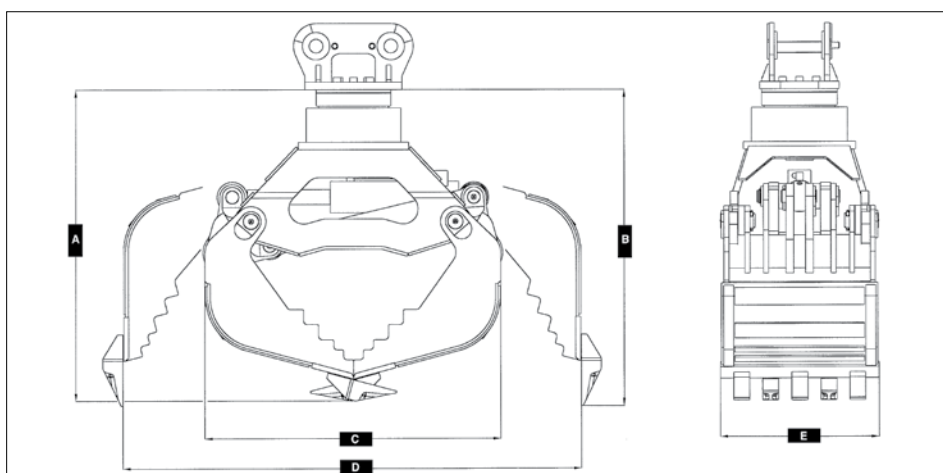
Ideally, there should be two double-acting hydraulic circuits on the machine side. If only one circuit is available, the „open/close“ and „swivel left/right“ functions can be electrically switched via an additional directional control valve.

For external products too

Over 2000 Menzi universal grabs are already in daily use in harsh industrial applications. We offer a finely-tuned programme with seven different sizes for excavators from 1 to 25 tonnes.

Upon request ...

every grabs are available without teeth (only with blade), with snap-on blades or with various quick-change suspensions.



Type		UG02	UG04	UG05	UG08	UG12	UG15	UG20
Excavator weight class	t	1-1.5	1.5-3	3-5	5-8	8-12	9-15	16-25
Capacity	l	26	35	85	120	200	254	401
Rotor axial load capacity	t	2	5	5	7	14	15	25
Rotor radial load capacity	t	1.2	4	4	6	10	11	18
Weight without attachment plate	kg	103	147	253	433 (467)	710	839	1340
A Dimension	mm	587	674	848	957	1220	1243	1388
B Dimension	mm	610	665	824	987	1240	1263	1413
C Dimension	mm	602	602	725	900	1183	1183	1280
D Dimension	mm	876	955	1305	1450	1830	1830	2100
E Cutting width	mm	300	350	450	500	570	630	790
Teeth		3	3	4	5	5	5	7
Tooth system		ME	ME	KingMet	Esco	Esco	Esco	Esco
Max. closing force	kN	10	11	20	25	45	45	80
Max. oil volume grab / rotate	l/min.	25 / 8	25 / 25	40 / 25	40 / 27	44 / 54	44 / 48	70 / 66
Max. working pressure grab / rotate	bar	250 / 200	250 / 200	250 / 200	350 / 200	350 / 200	350 / 250	350 / 200
Hose connections, grab action		G3/8"	M18x1.5	M18x1.5	G3/4"	G1"	G1"	SAE1"
Hose connections, rotate action		G3/8"	M18x1.5	M18x1.5	G1/2"	G1/2"	G1/2"	G1/2"

The hydraulic swivel head Powertilt

Swivelling the tool

The Powertilt swivel head brings your tool into position. Buckets and other attachments can be continuously swivelled to the side, so increasing flexibility.

Maintenance

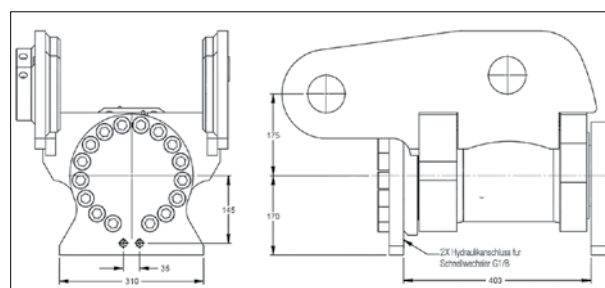
All internal parts are maintenance-free. They are lubricated by the flow of hydraulic oil. Strong wiper rings prevent the intrusion of dirt and water. The integrated hydraulic rotating union prevents protruding hoses.

Designs

With quick-change aid: the attachment can be mounted using hooks, the rear pins are inserted manually.

With hydraulic Menzi quick-changer: easy tool change operation using the joystick, no need for the operator to leave the cab.

Powertilt	PTA-195
Menzi Muck	M3 / M5
Oil volume	45 – 76 l/min.
Working pressure max.	310 bar
Swivel torque max.	13785 Nm
Holding torque max.	39718 Nm
Swivel angle	120 °
Weight	330 kg



The hydraulic quick-changer

from own production

Rational tool change

The operator can change the tool as required easily, quickly and safely, without leaving the machine. Practically full power efficiency thanks to the compact design.

Zero play lock

A hydraulic cylinder with integrated check valve acts permanently on the front pins of the attached tool. This prevents play from developing between the quick changer and the tool.

Control

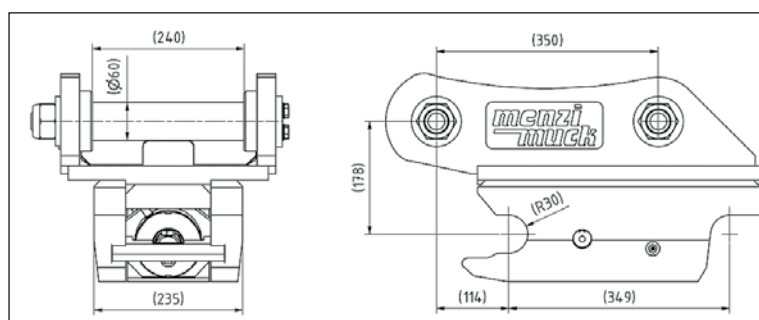
A separate auxiliary circuit is required for activating the locking mechanism of the fully hydraulic quick changer.

Face bucket and backhoe

The hydraulic quick-changer fits onto the original tool holder on the Menzi Muck. No expensive attachment plates required. Buckets can also be attached in the reverse direction.



Menzi Muck	M3 / M5
Hydraulic system	2-circuit system
Constant pressure	30 bar
Installation (Excavator)	Additional hydraulic circuit



menzi
muck

The Tiltrotator Engcon

1 device - 4 functions

Endless rotation in both directions, 45 degree lateral swivel to left and rights, hydraulic quick-changer and a hydraulic additional function (~ 60 l/min.). The rotating and swivel movement allow a new, more rational mode of operation, unexpected corners and angles can now be reached.

Activation

All functions are controlled by solenoid valves and can be activated simultaneously.

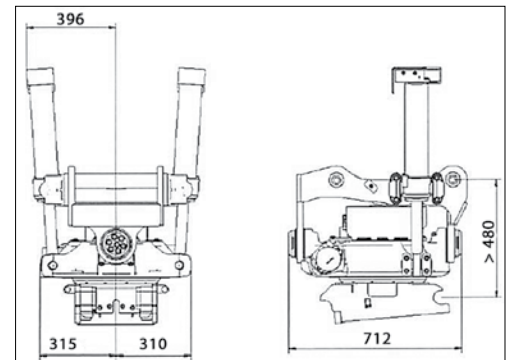
Special design & accessories

For Menzi, the tiltrotator comes in a special, more powerful design. Accessories such as the Original Menzi quick changer expand its range of use. Optionally available are the integrated automatical grease unit and the integrated grab tongs.



Activation by
Menzi PROP

Type	EC219
Weight	> 420 kg
Swiveling range	2 x 45°
Oil volume	40 - 80 l/min.
Working pressure	210 bar
Swivel torque max.	37030 Nm
Holding torque max.	5100 Nm



The Tiltrotator Indexator

Precision in every movement

Rototilt enables turning and tilting of buckets and other tools in one continuous motion. Endless rotation in both directions, lateral tilting of 40 degrees left and right, hydraulic quick changer and a hydraulic function control.

Activation

Independent high-flow rotary unions with up to 200 l / min. All functions are controlled by solenoid valves and can be activated simultaneously.

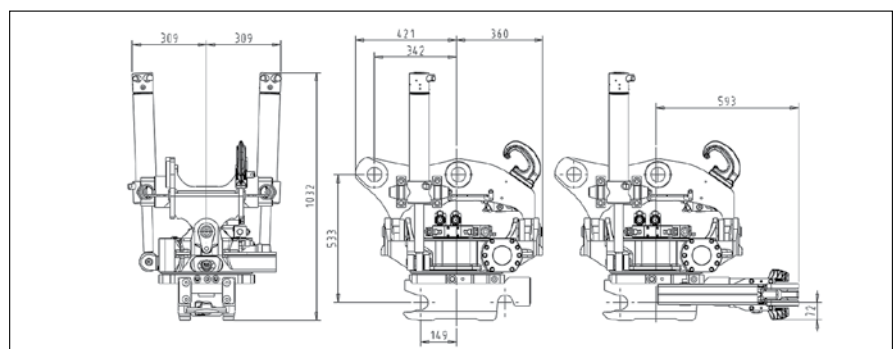
Special design & accessories

For Menzi, the indexator comes in a special, more powerful design. Accessories such as the Original Menzi quick changer expand its range of use. Optionally available are the integrated automatical grease unit and the integrated grab tongs.

Type	RT40
Weight	ab 415 kg
Swiveling range	2 x 40°
Oil volume	250 bar
Working pressure	70 l/min
Swivel torque max.	4500 Nm
Holding torque max.	6400 Nm



Activation by
Menzi PROP



The security and drawing winch

from own production

Application

The winch, designed specifically for Menzi Muck, secures the machine on extremely steep slopes and also permits occasional ridge work.

Mounting

The winch is mounted to the Menzi Muck chassis using a quick-release system. To operate the winch, the Menzi Muck must be fitted with the „winch preparation“ option (activation and hydraulic connections).

2 cable directions

Forwards draw for simple ridge applications, backwards draw to secure the machine.

Handling

The winch is activated via a toggle switch in the cab. It is controlled by a proportional rocker (optionally over proportional foot pedal).

Mechanical override

The drum is uncoupled, allowing the cable to be extended by hand. The swivel pulley ensures the cable is routed straight, even if drawn diagonally.



Type	W120
Weight with cable	469 kg
Max. cable length	88 m
Rope	14 mm
Draw force inwards	80 kN
Draw force outwards	61 kN
Max. speed of cable	39 m/min.
Working pressure	280 bar

The forestry winch

Professional ridge work

The Menzi Muck forest winch was developed to meet the tough requirements for ridge operation. It can also be used to secure the machine.

Mounting and cable direction

The forest winch is mounted to the Menzi Muck chassis using a quick-release system. A switch system allows the cable draw direction to be changed with just a few hand movements.

Technical description

Hydraulically-driven single drum winch with integrated planetary gear. Hydraulically-ventilated spring-loaded multiple-disk brake. Load sink brake is the operating brake.

Handling

The winch is activated via a toggle switch in the cab. It is controlled by a proportional rocker (optionally over proportional foot pedal). The hydraulic cable delivery generates a pretension, which keeps the cable between drum and delivery constant at all times. When drawn in, the cable is wound on the drum in neat layers.

Remote control (option)

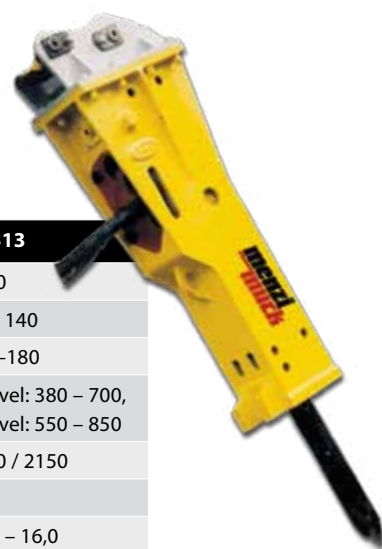
The following functions can be operated remotely: extending and retracting the cable; starting and stopping the engine; switching between idling and preset speed; emergency stop.



Type	Forestry winch
Weight with cable	565 kg
Cable length	120 m
Rope	12 mm
Draw force inwards*	8'000 kg
Draw force outwards*	5'500 kg
Oil volume	100 l / min.
Max. speed of cable up to	up to 120 m / min.
* winching capacity may vary depending on national safety	

The hydraulic impact hammer

sound isolated



In a slim, functional package, the new housing comes as a single piece. There are no protruding side bolts or screw fasteners. The hammer is fully protected from outside influences (impact and dust). The tempered bull bar protects the housing from wear and damage.

Maximum impact energy

The long piston impact achieves virtually unrivalled impact energy with minimum force. The pistons are specially hardened and heat-resistant.

Chisels

High-quality chisels of various designs with large diameters ensure optimised use of energy.

Type (silenced serie)		EHB10	EHB13
Weight	kg	600	1100
Oil volume ~	l/min.	60 – 110	80 – 140
Working pressure	bar	140 – 180	140–180
Impact rate	1/min	500 – 1000	1. level: 380 – 700, 2. level: 550 – 850
Max. impact energie	Joule	1350	2500 / 2150
Tool diameter	mm	93	105
Excavators	to	7,0 – 15,0	10,0 – 16,0

Technology

A high-pressure accumulator prevents pressure fluctuations and guarantees regular powerful impact. The perfect vibration damping system reduces noise and vibrations to a minimum. You can use the dual-speed control system to adjust the impact frequency to the hardness of the rock (EHB 13).

Attachment and options

Attachment plates are available in various designs. Automatic chisel lubrication (optionally on EHB 13) prolongs service life.

The hydraulic hedge shears

Use

You can use the hydraulic hedge shears to cut and clear wood in a single working process. Sitting safely and comfortably in the excavator you can cut trees, shrubs, hedges and bushes in an efficient and streamlined manner.

Easy handling

All cutting and holding works are executed by one action (joystick or foot pedal). If the cut is done, the grabs grip the wood, which leans on the mounting bracket and can be deposited at the intended destination.

Attachment and options

The shears are running only with double-acting control circuit. Optionally, a supporting foot for safe movement in difficult terrain is available. When mounting a swivel unit, an additional double-acting control circuit is needed.



Type		HS 760	HS 850
Length	mm	1600	1750
Width	mm	830	850
Height	mm	1100	1150
Weight without supporting foot	kg	365	475
Cutting capacity for alder	mm	230	280
Cutting capacity for oak	mm	180	210
Opening width	mm	670	660
Oil volume	l/min.	60 – 100	80 – 100
Operating pressure	bar	250 – 270	270 – 300
Excavators	to	5 – 12	11 – 18

The forestry mulching unit

Working process

For large, standing wood (trees, thick bushes, etc.), the rotor is turned in the opposite direction to perform mulching. The aggressive shape of the cutter bits chops up the wood into mulch. It then closes as soon as the material lands on the floor, so that the material can be chopped up further.

Attachment and options

Two double-acting control circuits and a separate drain line are required. Optionally, a supporting foot for safe movement in difficult terrain is available.

Tools

The cutter bits are manufactured from forged steel with carbide pins around the cutting edge. They are fixed on the shaft.

Construction

No dust by fully enclosed double steel housing. The frame is made of wear-resistant steel. Robust protection chains slow down the mulched material for ensuring safety.



Type		BMS-F100	BMS-F125
Working width	mm	1000	1250
Weight without supporting foot	kg	565	640
Oil volume	l/min.	75 – 140	75 – 140
Operating pressure	bar	350	350
Milling tools		21	27
Excavators	to	10 – 20	10 – 20

The stump grinder

Working process

With the stump grinder tree stumps are removed quickly and easily.

Efficient way of working

The Hardox cutting wheel with triplex cutting teeth and direct drive over piston engines delivers an amazing cutting performance.

Mounting

Easy adaptation to the corresponding quick-change systems, thus attaching and removing the stump grinder in seconds.



Type		ST 50 H	ST 65 H
Length max.	mm	1050	1100
Height	mm	725	905
Width	mm	650	720
Weight	kg	200	500
Required power	KW	25 - 50	12 - 20
Cutting wheel Ø	mm	Ø 570 x 15	720 x 15
Teeth		20	28
Oil volume	l/min.	80 - 130	100 - 200
Excavators	to	8.0 – 14.0	12.0 – 20.0