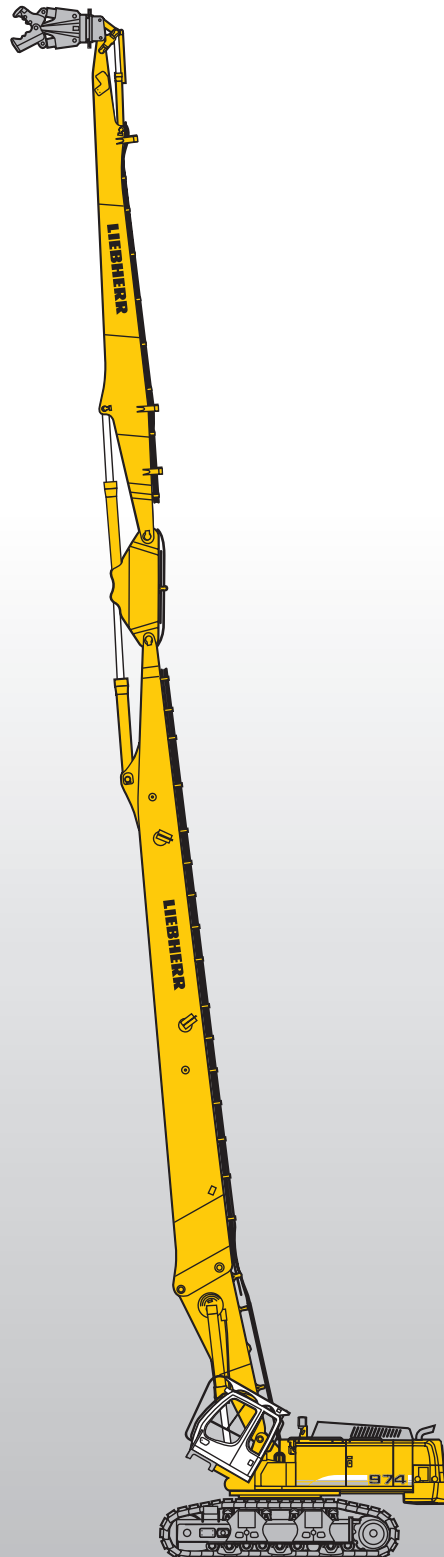
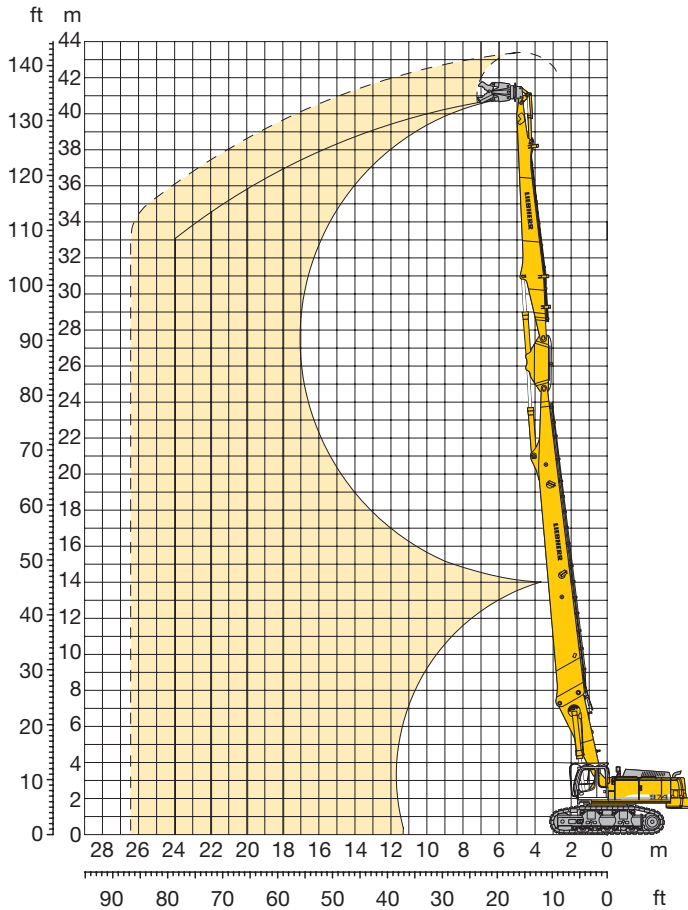


## Attachment Information

Liebherr Crawler Excavator  
with Demolition Attachment



# Demolition Attachment 134'6"



## To order a complete machine you need the following

- Cab for demolition application
- Hydraulic control for rotation
- Hydraulic control for demolition attachment
- Hoist cylinders with re-generation and load holding valves
- Basic boom
- Heavy duty counterweight 55,115 lb

## For demolition application, following additional items are also required:

- Demolition boom 55'9"
- Intermediate boom 8'10"
- Demolition stick 44'3" standard (linkage R 932 Li)
- Tool (backhoe bucket, demolition shears, concrete nibblers, etc.)
- Support for demolition attachment
- Integrated protection grid

## Optional

- 30° tiltable cab
- Integrated protection grid for cab on tilting device
- Hydraulic for removable counterweight
- Storage rack for demolition attachment

## Reach Limitation

	59'1"	65'7"	72'2"	78'9"
Demolition boom 55'9" + Intermediate boom 8'10" + Demolition stick 44'3"	Tool weight* in lb			
HD-EW-Undercarriage	6,614	6,614	6,173	5,511
VH-HD-Undercarriage	6,614	6,614	6,173	5,511

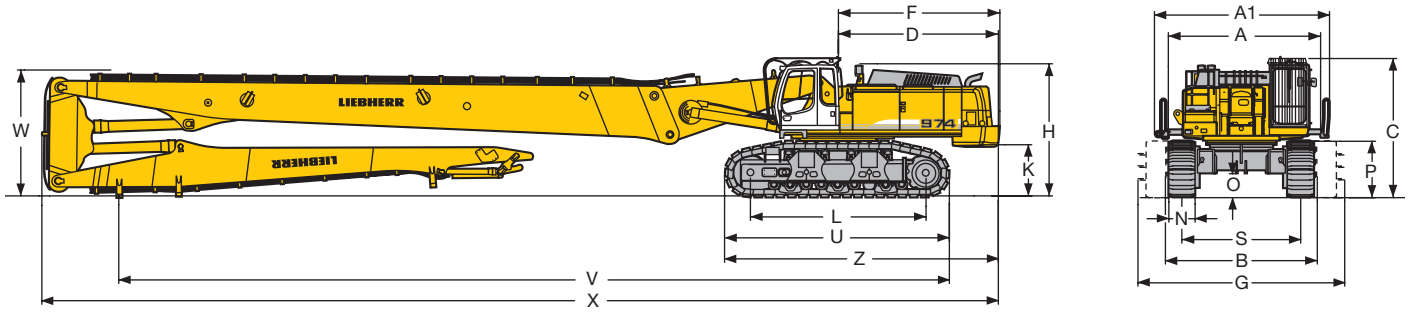
\* included quick change adapter, adapter plate and tool

## Operating Weight and Ground Pressure

Operating weight includes basic machine with heavy duty counterweight 55,115 lb, demolition boom 55'9", intermediate boom, demolition stick 44'3" standard and working tool 5,511 lb.

Undercarriage		HD-EW	VH-HD
Pad width	in	30"	30"
Weight	lb	280,423	290,123
Ground pressure	psi	21.9	22.8

# Dimensions

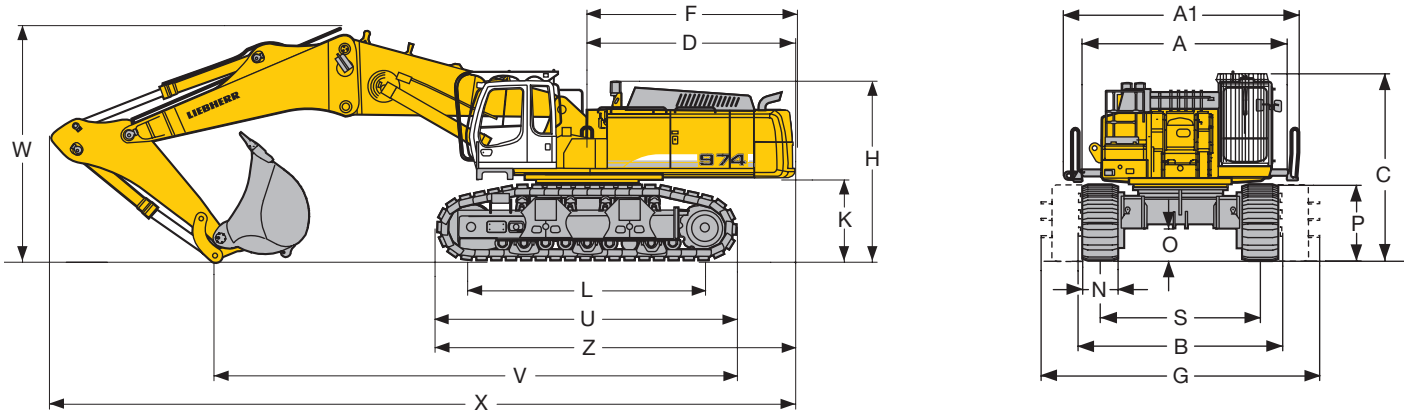


	<b>HD-EW</b>	ft in	<b>VH-HD</b>	ft in
A		14' 3"		14' 3"
A1		16' 4"		16' 4"
C		13' 3"		13' 1"
D		15'		15'
E		15' 2"		15' 2"
H		12' 7"		12' 5"
K		5'		4'10"
L		16' 6"		16' 6"
P		5' 6"		5' 4"
Q		30"		27"
S		15' 1"		11'2" – 15' 5"
U		21' 1"		21'
Z		25' 7"		25' 6"
N		30"		30"
B		18' 4"		14'3" – 18' 6"
G*		19' 5"		15'2" – 19' 5"

<b>Demolition Boom 55'9"</b>				
	<b>HD-EW</b>	ft in	<b>VH-HD</b>	ft in
V		77'11"		77'11"
W		11'10"		11'10"
X		89' 9"		89' 9"

\* with catwalks

# Dimensions



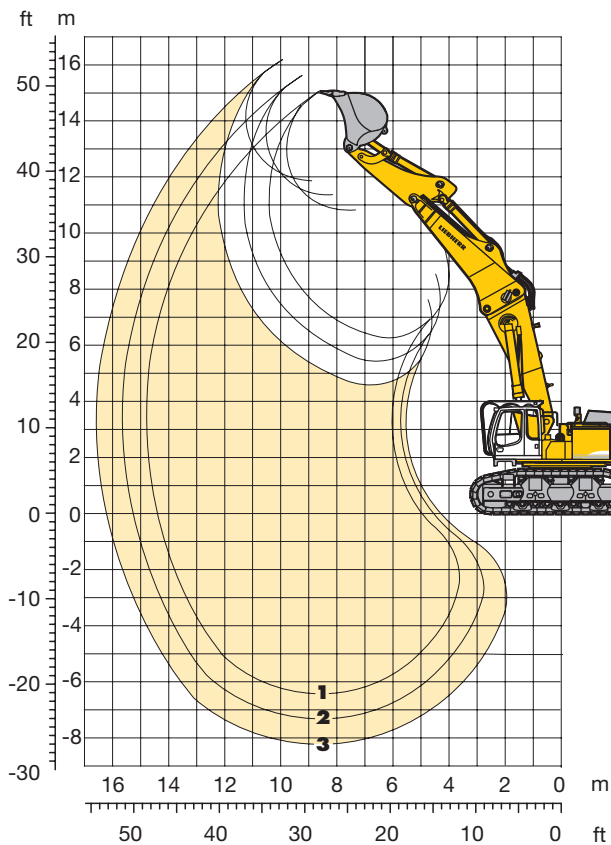
	<b>HD-EW</b>	ft in	<b>VH-HD</b>	ft in
A		14' 3"		14' 3"
A1		16' 4"		16' 4"
C		13' 3"		13' 1"
D		14' 5"		14' 5"
E		14' 7"		14' 7"
H		12' 7"		12' 5"
K		5' 11"		5' 9"
L		16' 6"		16' 6"
P		5' 6"		5' 4"
Q		30"		27"
S		15' 1"		11' 2" – 15' 5"
U		21' 1"		21'
Z		25' 1"		25'
N		30"		30"
B		18' 4"		14' 3" – 18' 6"
G*		19' 5"		15' 2" – 19' 5"

	<b>Stick Length</b>	<b>Main Boom 16' 5"</b>	
		HD-EW	VH-HD
	ft in	ft in	ft in
V	9' 6"	36' 3"	36' 3"
	12' 6"	35' 3"	35' 3"
	15' 5"	34' 7"	34' 7"
W	9' 6"	16' 7"	16' 5"
	12' 6"	18' 1"	17' 11"
	15' 5"	19' 10"	19' 8"
X	9' 6"	51' 10"	51' 10"
	12' 6"	50' 6"	50' 6"
	15' 5"	50' 4"	50' 4"

\* with catwalks

# Backhoe Attachment

with Main Boom 16'5"



## For backhoe application, following items are required

- Main boom 16'5"
- Stick 9'6"
- Stick 12'6"
- Stick 15'5"
- Storage racks for backhoe attachment

### Optional

- Hydraulic lines AHS \* for main boom 16'5"
- Hydraulic lines AHS \* for stick 9'6"
- Hydraulic lines AHS \* for stick 12'6"
- Hydraulic lines AHS \* for stick 15'5"
- Hydraulic lines rotary drive for main boom 16'5"
- Hydraulic lines rotary drive for stick 9'6"
- Hydraulic lines rotary drive for stick 12'6"
- Hydraulic lines rotary drive for stick 15'5"
- Backhoe bucket – as required

\* AHS = hydraulic control for hydraulic accessory

## Digging Envelope

		1	2	3
Stick lengths	ft in	9'6"	12' 6"	15' 5"
Max. digging depth	ft in	21'	23'11"	26'11"
Max. reach at ground level	ft in	47'3"	50' 2"	53'
Max. dump height	ft in	35'3"	37' 1"	38'11"
Max. teeth height	ft in	49'3"	51' 2"	53' 2"
Digging force	lbf	75,311	63,621	55,303
	lb	75,176	63,492	55,335
Breakout force	lbf	91,048	91,048	91,048
	lb	91,049	91,049	91,049

## Operating Weight and Ground Pressure

Operating weight includes basic machine with counterweight 35,273 lb, main boom 16'5", stick 9'6" and backhoe bucket 6.80 yd<sup>3</sup> (9,700 lb).

Undercarriage		HD-EW	VH-HD
Pad width	in	30"	30"
Weight	lb	241,182	250,882
Ground pressure	psi	18.8	19.6

## Backhoe Bucket

	ft in	5'9"	5'9"	6'3"	6'3"	6'11"	6'11"	7'5"	7'5"	6'3"	7'5"
Cutting width	ft in	5'9"	5'9"	6'3"	6'3"	6'11"	6'11"	7'5"	7'5"	6'3"	7'5"
Capacity ISO 7451	yd <sup>3</sup>	4.71	4.97	5.36	5.62	6.02	6.28	6.80	7.59	5.62	6.02
Weight Standard bucket with teeth V 61 SD	lb	–	8,267	–	8,708	–	9,369	9,700	10,141	–	–
Weight HD bucket with teeth V 61 RYL	lb	9,480	–	9,921	–	10,692	–	–	–	–	–
Weight HD-V bucket with teeth V 69 SD	lb	–	–	–	–	–	–	–	–	13,448	13,448
Suitable for material up to a specific weight of											
with stick 9'6"	lb/yd <sup>3</sup>	–	–	–	–	3,708	3,708	3,034	3,034	3,708	3,034
with stick 12'6"	lb/yd <sup>3</sup>	3,708	3,708	3,708	3,708	3,034	3,034	2,528	2,528	3,034	2,528
with stick 15'5"	lb/yd <sup>3</sup>	3,034	3,034	3,034	3,034	2,528	2,528	2,023	2,023	2,023	–

# Lift Capacities

with Main Boom 16'5"

## Stick 9'6"

Height (ft)	Under-carriage	Radius of load from centerline of machine (ft)							
		10	15	20	25	30	35	40	45
45	HD-EW								
	VH-HD								
40	HD-EW								
	VH-HD								
35	HD-EW						30.6# (30.6#)		
	VH-HD						30.2# (30.2#)		
30	HD-EW					35.5# (35.5#)	33.1# (33.1#)		
	VH-HD					35.4# (35.4#)	33.1# (33.1#)		
25	HD-EW				44.4# (44.4#)	38.4# (38.4#)	34.7# (34.7#)	32.4# (32.4#)	
	VH-HD				44.2# (44.2#)	38.3# (38.3#)	34.6# (34.6#)	32.0# (32.0#)	
20	HD-EW				50.8# (50.8#)	42.2# (42.2#)	37.0# (37.0#)	32.0# (33.8#)	
	VH-HD				50.6# (50.6#)	42.1# (42.1#)	36.9# (36.9#)	33.7# (33.7#)	
15	HD-EW				57.6# (57.6#)	46.4# (46.4#)	39.1# (39.6#)	30.9# (33.6#)	
	VH-HD				57.4# (57.4#)	46.2# (46.2#)	39.5# (39.5#)	34.0# (34.6#)	
10	HD-EW				62.9# (63.4#)	47.6# (50.2#)	37.3# (40.6#)	29.8# (32.5#)	
	VH-HD				63.2# (63.2#)	50.1# (50.1#)	41.0# (41.8#)	32.9# (33.5#)	
5	HD-EW				60.3# (66.2#)	45.6# (49.9#)	36.0# (39.3#)	29.0# (31.7#)	
	VH-HD				66.4# (67.2#)	50.2# (51.2#)	39.6# (40.4#)	32.0# (32.6#)	
0	HD-EW		43.9# (43.9#)		59.1# (65.0#)	44.5# (48.7#)	35.1# (38.4#)	28.5# (31.2#)	
	VH-HD				65.2# (66.5#)	49.0# (60.0#)	38.8# (39.5#)	31.6# (32.2#)	
- 5	HD-EW		64.4# (64.4#)		59.0# (64.9#)	44.1# (48.4#)	34.8# (38.1#)	28.6# (31.3#)	
	VH-HD		63.6# (63.6#)		65.1# (66.4#)	48.7# (49.6#)	38.5# (39.2#)	31.6# (32.2#)	
- 10	HD-EW		83.7# (83.7#)		59.8# (65.7#)	44.6# (48.8#)	35.3# (38.6#)		
	VH-HD		83.9# (83.9#)		65.8# (67.1#)	49.1# (50.0#)	38.9# (39.6#)		
- 15	HD-EW				61.4# (62.1#)	45.8# (50.1#)			
	VH-HD				62.4# (62.4#)	50.3# (50.8#)			
- 20	HD-EW								
	VH-HD								

## Stick 12'6"

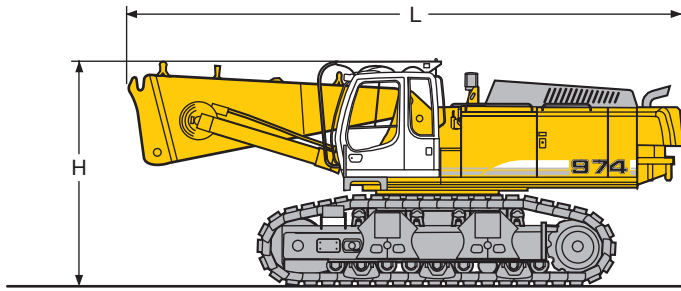
Height (ft)	Under-carriage	Radius of load from centerline of machine (ft)							
		10	15	20	25	30	35	40	45
45	HD-EW								
	VH-HD								
40	HD-EW							23.0# (23.0#)	
	VH-HD							22.7# (22.7#)	
35	HD-EW							28.0# (28.0#)	
	VH-HD							27.9# (27.9#)	
30	HD-EW							29.5# (29.5#)	25.8# (25.8#)
	VH-HD							29.5# (29.5#)	25.7# (25.7#)
25	HD-EW							34.5# (34.5#)	31.3# (31.3#)
	VH-HD							34.4# (34.4#)	29.4# (29.4#)
20	HD-EW						45.7# (45.7#)	38.5# (38.5#)	33.9# (33.9#)
	VH-HD						45.5# (45.5#)	38.3# (38.3#)	33.8# (33.8#)
15	HD-EW						52.8# (52.8#)	42.9# (42.9#)	36.7# (36.7#)
	VH-HD						52.5# (52.5#)	42.7# (42.7#)	36.7# (36.7#)
10	HD-EW						59.3# (59.3#)	47.2# (47.2#)	37.6# (37.6#)
	VH-HD						59.1# (59.1#)	47.0# (47.0#)	39.6# (39.6#)
5	HD-EW						61.2# (64.4#)	46.0# (60.3#)	36.0# (39.3#)
	VH-HD						64.2# (64.2#)	50.7# (60.7#)	39.7# (40.4#)
0	HD-EW					43.7# (43.7#)	59.3# (65.2#)	44.4# (48.7#)	34.8# (38.1#)
	VH-HD					43.3# (43.3#)	65.4# (66.7#)	49.0# (50.0#)	38.5# (39.2#)
- 5	HD-EW		30.9# (30.9#)		57.2# (57.2#)	58.5# (64.4#)	43.6# (47.9#)	34.2# (37.5#)	27.7# (30.4#)
	VH-HD				56.6# (56.6#)	64.6# (65.9#)	48.2# (49.1#)	37.8# (38.6#)	30.7# (31.3#)
- 10	HD-EW		47.5# (47.5#)		76.4# (76.4#)	58.7# (64.6#)	43.6# (47.8#)	34.2# (37.5#)	27.9# (30.6#)
	VH-HD		46.8# (46.8#)		75.6# (75.6#)	64.7# (66.0#)	48.1# (49.0#)	37.8# (38.6#)	30.9# (31.5#)
- 15	HD-EW				81.9# (81.9#)	59.7# (64.9#)	44.3# (48.5#)	34.9# (38.2#)	
	VH-HD				82.1# (82.1#)	65.1# (65.1#)	48.8# (49.7#)	38.5# (39.2#)	
- 20	HD-EW						45.9# (47.0#)		
	VH-HD						58.8# (58.8#)	47.3# (47.3#)	

## Stick 15'5"

Height (ft)	Under-carriage	Radius of load from centerline of machine (ft)							
		10	15	20	25	30	35	40	45
45	HD-EW						17.2# (17.2#)		
	VH-HD						16.8# (16.8#)		
40	HD-EW								
	VH-HD								
35	HD-EW							20.0# (20.0#)	
	VH-HD							19.9# (19.9#)	
30	HD-EW							22.5# (22.5#)	15.6# (15.6#)
	VH-HD							22.4# (22.4#)	15.3# (15.3#)
25	HD-EW						26.3# (26.3#)	25.0# (25.0#)	20.1# (20.1#)
	VH-HD						26.1# (26.1#)	24.9# (24.9#)	19.9# (19.9#)
20	HD-EW					34.2# (34.2#)	30.5# (30.5#)	27.9# (27.9#)	23.3# (23.3#)
	VH-HD					33.8# (33.8#)	30.4# (30.4#)	27.8# (27.8#)	23.2# (23.2#)
15	HD-EW				47.4# (47.4#)	38.9# (38.9#)	33.5# (33.5#)	30.0# (30.0#)	24.8# (26.5#)
	VH-HD				47.2# (47.2#)	38.8# (38.8#)	33.4# (33.4#)	29.9# (29.9#)	26.4# (26.4#)
10	HD-EW				54.5# (54.5#)	43.6# (43.6#)	36.7# (36.7#)	29.9# (32.2#)	23.8# (26.1#)
	VH-HD				54.3# (54.3#)	43.4# (43.4#)	36.6# (36.6#)	32.1# (32.1#)	26.5# (27.0#)
5	HD-EW				60.5# (60.5#)	46.5# (47.7#)	36.1# (39.4#)	28.6# (31.3#)	23.0# (25.3#)
	VH-HD				60.3# (60.3#)	47.6# (47.6#)	39.6# (39.6#)	31.7# (32.3#)	25.7# (26.2#)
0	HD-EW			44.3# (44.3#)	59.4# (64.7#)	44.4# (48.7#)	34.6# (37.9#)	27.6# (30.3#)	22.4# (24.7#)
	VH-HD			44.1# (44.1#)	64.6# (64.6#)	49.0# (60.0#)	38.3# (39.0#)	30.7# (31.3#)	25.0# (25.5#)
- 5	HD-EW		27.6# (27.6#)		52.6# (52.6#)	58.0# (63.8#)	43.1# (47.3#)	33.6# (36.9#)	27.0# (29.6#)
	VH-HD		27.2# (27.2#)		52.3# (52.3#)	64.0# (65.4#)	47.7# (48.6#)	37.3# (38.0#)	30.0# (30.6#)
- 10	HD-EW		27.9# (27.9#)	40.1# (40.1#)	66.4# (66.4#)	57.5# (63.4#)	42.6# (46.8#)	33.2# (36.5#)	26.8# (29.5#)
	VH-HD		27.4# (27.4#)	39.6# (39.6#)	65.8# (65.8#)	63.6# (64.9#)	47.2# (48.1#)	36.9# (37.6#)	29.8# (30.4#)
- 15	HD-EW		55.6# (55.6#)	84.9# (84.9#)	58.0# (63.9#)	42.9# (47.1#)	33.5# (36.7#)	27.2# (29.9#)	
	VH-HD		55.0# (55.0#)	85.1# (85.1#)	64.1# (65.4#)	47.4# (48.3#)	37.1# (37.8#)	30.2# (30.8#)	
- 20	HD-EW			78.5# (78.5#)	59.4# (61.9#)	43.9# (48.1#)	34.5# (37.8#)		
	VH-HD			78.8# (78.8#)	62.1# (62.1#)	48.4# (49.4#)	38.1# (38.8#)		

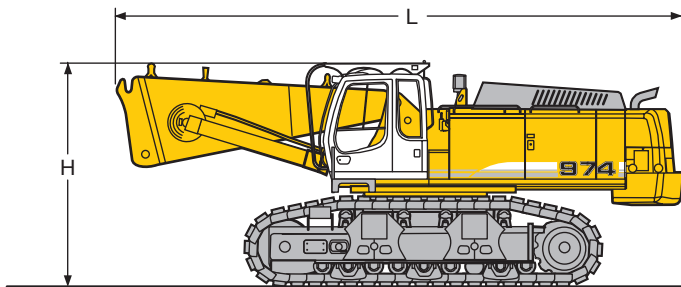
The lift capacities are stated in lb x 1000 on the backhoe bucket's lifting eye, and can be lifted 360° on firm, level supporting surface. Values quoted in brackets are valid for the undercarriage when in longitudinal position. Capacities are valid for 30" wide triple grouser pads. Indicated loads are based on ISO 10567 standard and do not exceed 75 % of tipping or 87 % of hydraulic capacity (indicated via #). Maximum load for the backhoe bucket's lifting eye is 59,524 lb. Without bucket (5.62 yd<sup>3</sup>), the lift capacities will increase by 8,708 lb, without bucket cylinder, link and lever they increase by an additional 2,756 lb. Lifting capacity of the excavator is limited by machine stability, hydraulic capacity and maximum permissible load of the load hook.

# Dimensions and Weights



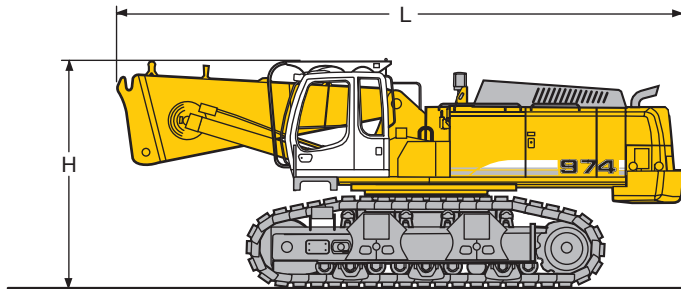
## Basic machine with fixed cab and integrated protection grid without counterweight

Undercarriage		HD-EW	VH-HD
Pad width	ft in	30"	30"
L	ft in	32' 4"	32' 4"
H	ft in	13' 3"	13' 1"
Weight	lb	182,981	192,681



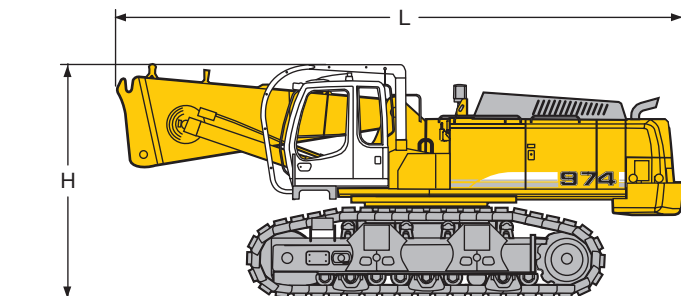
## Basic machine with fixed cab and integrated protection grid with counterweight

Undercarriage		HD-EW	VH-HD
Pad width	ft in	30"	30"
L	ft in	33'	33'
H	ft in	33' 3"	33' 1"
Weight	lb	225,750	235,450



## Basic machine with 30° tiltable cab and integrated protection grid

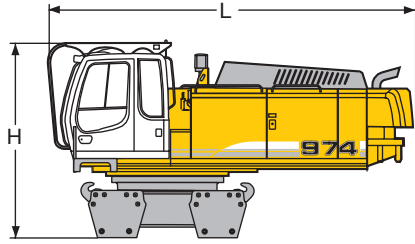
Undercarriage		HD-EW	VH-HD
Pad width	ft in	30"	30"
L	ft in	33'	33'
H	ft in	13' 5"	13' 2"
Weight	lb	228,398	238,099



## Basic machine with 30° tiltable cab and integrated protection grid on tilting device

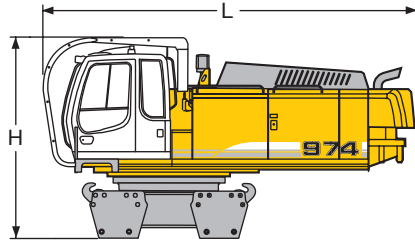
Undercarriage		HD-EW	VH-HD
Pad width	ft in	30"	30"
L	ft in	33'	33'
H	ft in	13'10"	13' 7"
Weight	lb	228,839	238,529

# Dimensions and Weights



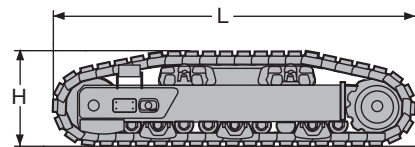
## Basic Machine without Side Frames for HD-EW-Undercarriage

L Length	ft in	21'4"
H Height	ft in	11'6"
Width	ft in	12'6"
Weight	lb	91,490



## Basic Machine without Side Frames for HD-EW-Undercarriage with 30° tiltable cab and integrated protection grid on tilting device

L Length	ft in	21' 8"
H Height	ft in	11'10"
Width	ft in	12' 6"
Weight	lb	91,931



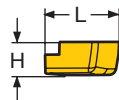
## Side Frame for HD-EW Undercarriage

L Length	ft in	21'1"
H Height	ft in	5'6"
Width	ft in	4'7"
Weight	lb	2 x 35,273



## Removable Counterweight

L Length	ft in	2'10"
H Height	ft in	3' 1"
Width	ft in	11'
Weight	lb	22,487

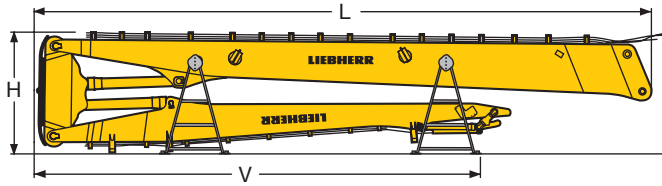


## Additional Counterweight

L Length	ft in	4' 3"
H Height	ft in	22"
Width	ft in	12' 8"
Weight	lb	20,282



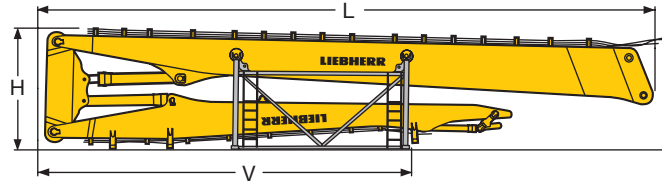
# Dimensions and Weights



## Demolition Attachment with Support

### Demolition Boom 55'9"

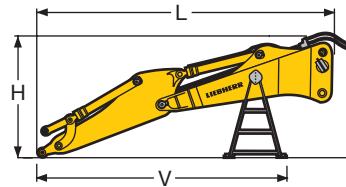
L Length	ft in	60' 2"
H Height	ft in	11' 10"
V	ft in	43' 4"
Width	ft in	8'
Weight without working tool	lb	51,587



## Demolition Attachment with Storage Rack

### Demolition Boom 55'9"

L Length	ft in	60' 2"
H Height	ft in	11' 10"
V	ft in	36' 5"
Width	ft in	8'
Weight without working tool	lb	54,453

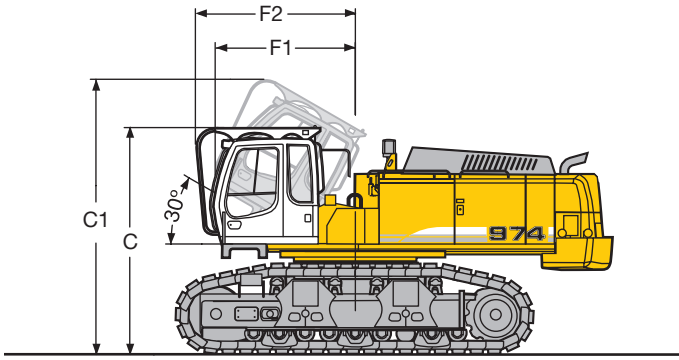


## Backhoe Attachment with Supports

### Main Boom 16'5"

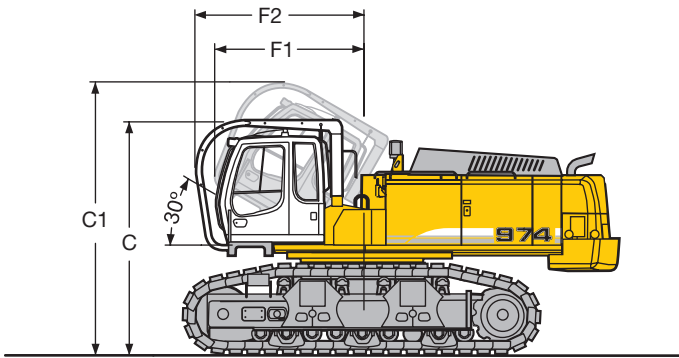
Stick lengths	ft in	9' 6"	12' 6"	15' 5"
L Length	ft in	25' 7"	28' 10"	31' 10"
H Height	ft in	12' 2"	11' 10"	11' 10"
V	ft in	21'	24' 3"	27' 3"
Width	ft in	7' 10"	7' 10"	7' 10"
Weight without bucket	lb	26,896	27,557	28,660

# Choice of Cab Elevations



## Version 30° tiltable with integrated protection grid

Undercarriage		HD-EW	VH-HD
C	ft in	13'5"	13'2"
C1	ft in	16'2"	16'
F1	ft in	8'1"	8'1"
F2	ft in	9'3"	9'3"



## Version 30° tiltable with integrated protection grid on tilting device

Undercarriage		HD-EW	VH-HD
C	ft in	13'10"	13' 7"
C1	ft in	16' 1"	15'11"
F1	ft in	8' 8"	8' 8"
F2	ft in	9' 7"	9' 7"