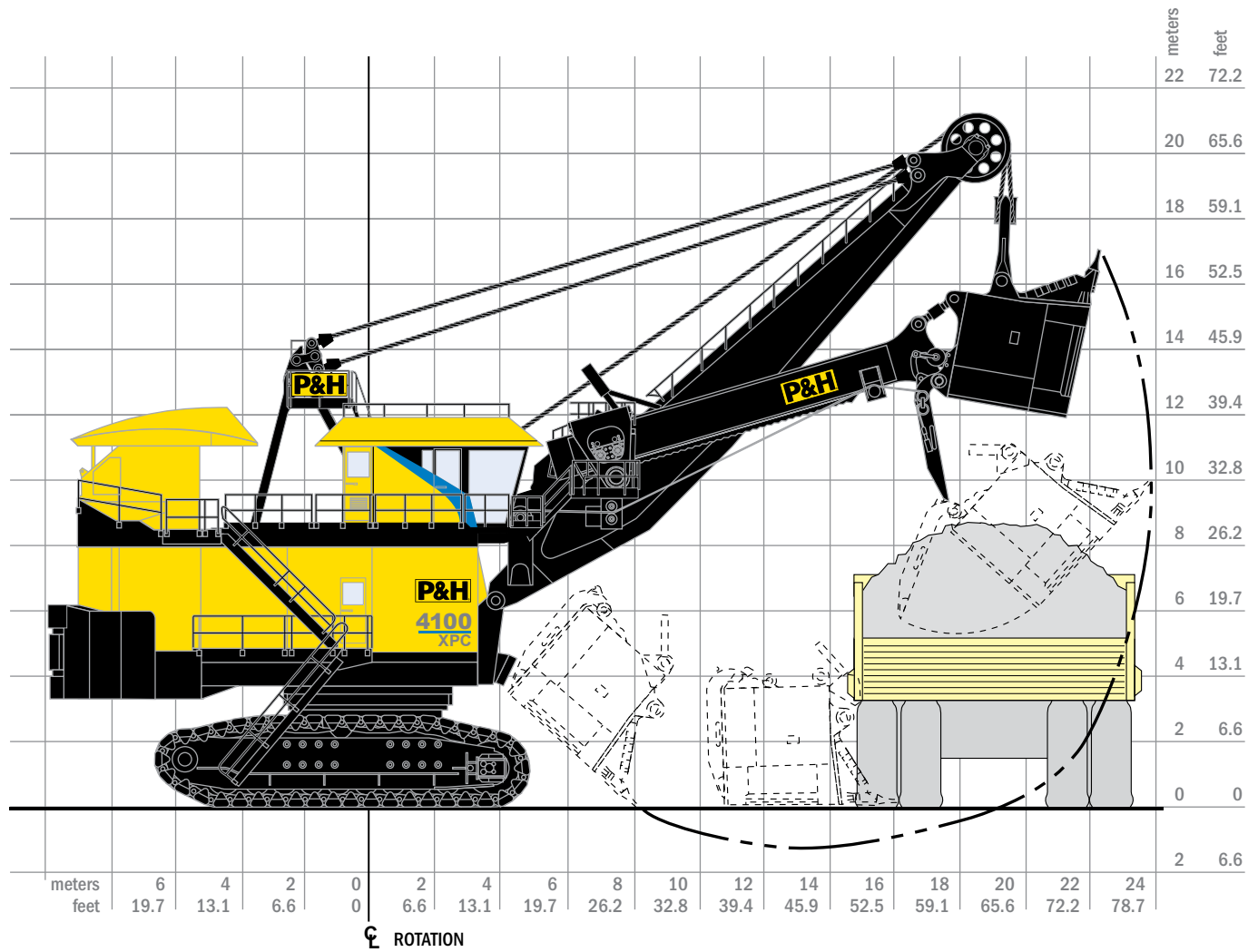


4100XPC



Electric Mining Shovel



Working Ranges

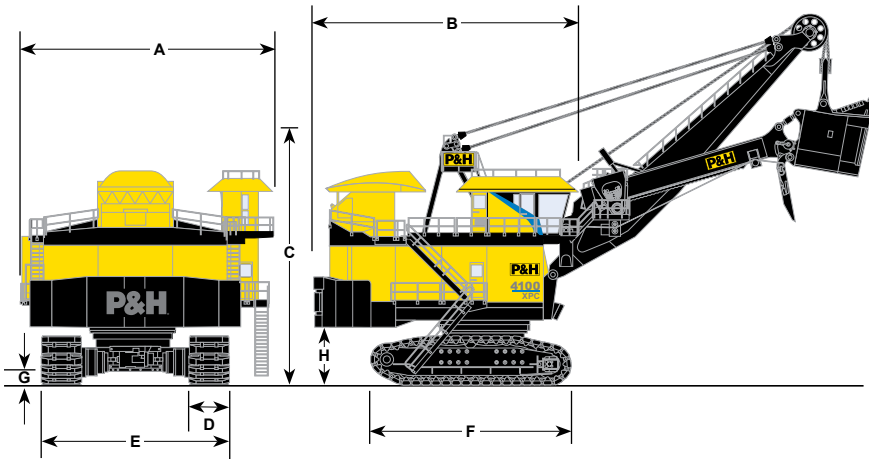
Height of Cut	16.8 m	55 ft. 2 in.
Radius of Cut	23.9 m	78 ft. 8 in.
Dumping Height* (Door Open)	9.5 m	31 ft. 0 in.
Floor Level Radius	16.0 m	52 ft. 6 in.
Tail Swing Radius	9.8 m	32 ft. 3 in.
Operator Eye Level	10.1 m	33 ft. 1 in.

*Height shown with bail-type dipper. Heights will be greater with bail-less or compact-bail dippers. Actual dumping height can be greater than door clearance height.

Capacity

Nominal Payload*	99.8-108.9 mt	120 st
Nominal Dipper Capacity		
SAE struck	52.8-61.2 m ³	69-82 yd ³
SAE 2:1	58.3-67.6 m ³	74.4-88.4 yd ³
Rated Suspended Load	195 mt	215 st
Optimum Truck Size (400 st truck shown)	218-363 mt	240-400 st

*Payload and dipper capacity are dependent on many factors. Contact Joy Global for an analysis of your specific application.



Overall Dimensions

A	Width	14.4 m	47 ft. 1 in.
B	Length	15.0 m	49 ft. 4 in.
C	Height Over Gantry	14.7 m	48 ft. 3 in.
D	Width of Crawler Shoes	1930 mm 2210 mm	76 in. 87 in.
E	Width of Crawlers (76")	10.2 m	33 ft. 6 in.
F	Length of Crawlers	11.7 m	38 ft. 6 in.
G	Ground Clearance	0.7 m	2 ft. 2 in.
H	Height – Ground to Bottom of Counterweight Slabs	3.6 m	11 ft. 10 in.

Power Requirements

Supply Voltage*	7200 or 13800V 3 Phase, 60 Hz	6000, 6600, 7200 or 11000 3 Phase, 50 Hz
Supply Transformer	(Minimum) 3750 kVA	
Minimum Short Circuit VA Available at Shovel	30 MVA	

*Voltage per customer requirements

Swing

Three modular P&H planetary gear cases of proven design and a single piece forged swing gear transmit torque for fast cycle times.

Spring-set air release disc brakes – one per motor.

Splash lube filtration system.

Propel

Propel on demand provides rapid transfer to propel mode. Rapid transfers allow frequent positioning of the shovel to the bank resulting in faster cycle times and more efficient digging.

Two rugged P&H planetary gear cases of proven design independently transmit torque to the drive sprockets, producing the tractive effort required for fast, efficient propel and positioning operations.

P&H brand Delta Drive low tension sprocket drive system with heavy duty cast crawler shoes.

Spring-set air release disc brakes – one per motor.

Crowd

Powerband V-belt drive between motor and gear case absorbs shock loads.

First and second reduction gearing in enclosed gear case for reliable splash lubrication, ease of maintenance, and extended component life.

Twin-leg dipper handle with torsion box and rack and pinion drive has inherent stability in the bank for optimal digging.

Spring-set air release disc brake.

Hoist

All gearing housed in single enclosed gear case with filtered and cooled oil fed to all bearings in addition to splash lubrication for reliable operation and ease of maintenance.

Large 68" diameter hoist drum for extended rope bending life. Ferrule becket system and dual electric tuggers are standard for efficient rope change.

Spring-set air release disc brakes – one per motor.

JOYGLOBAL



Product designs, specifications and/or data in this document are provided for informational purposes only and are not warranties of any kind. Product designs and/or specifications may be changed at any time without notice. The only warranties that apply to sales of products and services are Joy Global's standard written warranties, which will be furnished upon request.

Joy Global, Joy, P&H, Delta and related logos are trademarks of Joy Global Inc. or one of its affiliates.
© 2012 Joy Global Inc. or one of its affiliates. All rights reserved.



joyglobal.com