

470G LC

51 218-kg (112,916 lb.) Operating Weight



JOHN DEERE



Next-cavator.

Like its highly popular predecessors, the 470G LC Excavator gets work done with smooth, one-of-a-kind efficiency. Optimized hydraulics yield more muscle, so you can move more material per gallon of fuel. A rugged EPA Final Tier 4 (FT4)/EU Stage IV diesel engine meets rigid emission regulations, enabling you to work, wherever there's work — without compromising power, reliability, or ease of operation.





Key Specifications	470G LC
Net rated power	274 kW (367 hp)
Operating weight	51 218 kg (112,916 lb.)
Digging depth	8.27 m (27 ft. 2 in.)
Arm digging force	196–201 kN (44,063–45,187 lb.)
Bucket digging force	256–286 kN (57,551–64,295 lb.)

The perfect combination of brains and brawn.

The 470G LC is a smart choice. Intelligent features like our Powerwise™ III engine/hydraulic-management system with multiple productivity modes enable you to put that extra ability to use with the same kind of smooth precision that operators have come to expect from our entire line of excavators.

1. Low-effort joysticks, unmatched metering, and smooth multifunction operation deliver the control and finesse you need for utilities work.

2. Generous flow, arm force, and swing torque help speed cycles. So you can do your best to stay on schedule or ahead of the weather.

3. When the task calls for a little extra, simply press the power-boost button on the right-hand control and muscle through.





Powerwise III perfectly balances engine performance and hydraulic flow for predictable operation. Three productivity modes allow you to choose the digging style that fits the job. **High productivity** delivers more power and faster hydraulic response to move more material. **Power** delivers smooth and balanced metering for normal operation. **Economy** reduces top speed and helps save fuel.

Choose from a variety of track widths, arm lengths, buckets, and other productivity-boosting options.

Operating ease takes a turn for the better.

Now it's easier than ever for your operators to "dial things up." The 470G LC's refined monitor employs a turn-and-tap rotary control that provides quick access to an abundance of performance and convenience features and functions. Operators will also appreciate the quiet and spacious cab, unsurpassed all-around visibility, and numerous other amenities that provide everything your operators need to do their best work.

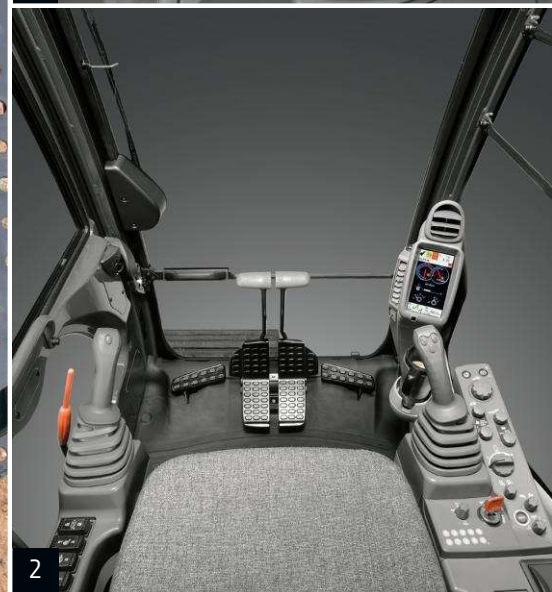
Thanks to a wide expanse of front, side, and overhead glass and mirrors, visibility to the sides and rear is unobstructed, even with the increased under-the-hood space requirements of FT4/Stage IV components.

We've got your back with a sculpted and heated air-suspension, high-back seat. Seat has 267 mm (10.5 in.) of travel, sliding together or independent of the joystick console so it won't cramp an operator's style.

Ergonomically correct short-throw pilot levers provide smooth, predictable fingertip control with less movement or effort. Push buttons in the right lever allow fingertip control of auxiliary hydraulic flow for operating attachments.

1. Multi-language LCD monitor and rotary dial provide intuitive access to a wealth of information and functions. Just turn and tap to select work mode, access operating info, check maintenance intervals, source diagnostic codes, adjust cab temperature, and tune the radio. Plus much more.
2. Standard boom/frame lights and cab/boom-mounted options provide illumination to extend your workday beyond daytime hours. Standard cab lights and a right-hand boom light further dispel the dark when needed.
3. Automatic, high-velocity, bi-level climate-control system with automotive-style adjustable louvers helps keep the glass clear and the cab comfortable.







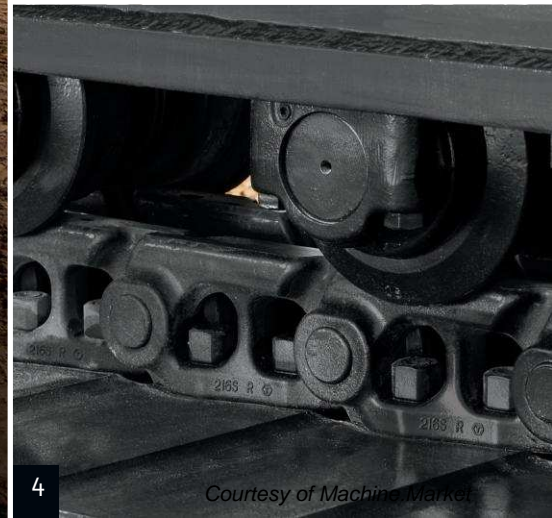
Nothing runs like a Deere, because nothing is built like one.

The 470G LC employs many of the same job-proven digging structures and hydraulic, electrical, and undercarriage components as its highly regarded D-Series predecessor. When you know how it's built, you'll run this Deere.

1. Highly efficient, hydraulically driven fan runs only as fast as needed, reducing noise, fuel consumption, and operating costs. Standard reversing feature back-blows cooler cores to keep them clean automatically or at the touch of a button.
2. A John Deere exclusive, three welded bulkheads within the boom resist torsional stress for unsurpassed durability. Boom, arm, mainframe, and FT4/Stage IV components are so tough, they're warranted for three years or 10,000 hours.
3. Thick-plate single-sheet mainframe, box-section track frames, and industry-exclusive double-seal swing bearing deliver rock-solid durability.
4. Compare the size of the 470G LC's carrier and bottom rollers, idlers, and sealed and lubricated chain. This is one heavy-duty undercarriage.

Optional grade-reference system includes sensor mounts to help speed installation, eliminating the need to grind, weld, and repaint. Our "open-architecture" design allows you to employ your favorite brand of grade-control system to help maximize productivity and uptime while lowering daily operating costs.

To meet stringent FT4/Stage IV standards, we built on our EPA Interim Tier 4 (IT4)/EU Stage IIIB solution to deliver the best combination of performance, efficiency, and reliability without sacrificing power or torque. Our field-proven technology is simple, fluid efficient, fully integrated, and fully supported. It employs field-proven cooled exhaust gas recirculation (EGR), easy-to-maintain high-uptime exhaust filters, and selective catalytic reduction (SCR).

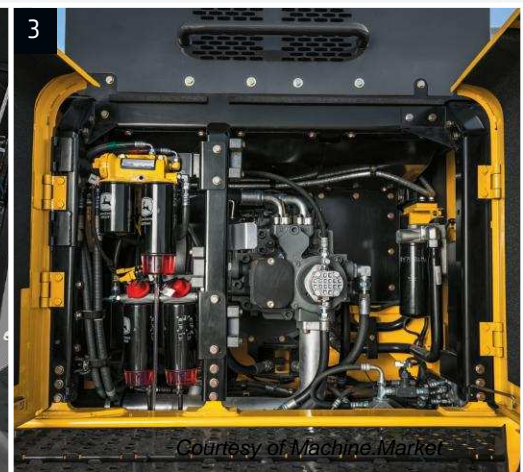
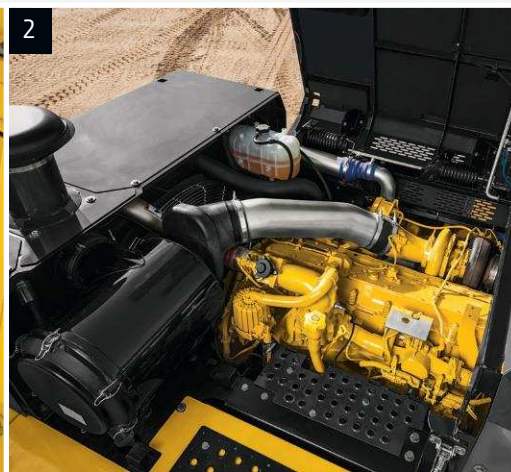


Simple to service. Easy on the bottom line.

Like all John Deere machines, the 470G LC is easy to service and low cost to maintain. Standard Deere walks allow for easy cab-level machine access with points of contact all around.

Ultimate Uptime, featuring John Deere WorkSight™, is a customizable support solution available exclusively from your Deere dealer. This flexible offering maximizes equipment availability with standard John Deere WorkSight capabilities that can help prevent future downtime and speed repairs when needed. In addition to the base John Deere WorkSight features, our dealers work with you to build an uptime package that meets the specific needs of your machine, fleet, project, and business, including customized maintenance and repair agreements, onsite parts availability, extended warranties, fluid sampling, response-time guarantees, and more.

John Deere WorkSight is an exclusive suite of telematics solutions that increases uptime while lowering operating costs. At its heart, JDLink™ Ultimate machine monitoring provides real-time utilization data and alerts to help you maximize productivity and efficiency while minimizing downtime. Remote diagnostics enable your dealer to read codes, record performance data, and even update software without a trip to the jobsite.



Courtesy of Machine Market



1. Diesel exhaust fluid (DEF) can be conveniently filled when refueling due to its large and accessible tank.
2. Ash-service intervals for the diesel particulate filter (DPF) are condition based, with machine alerts notifying the operator before service is required. Typically, ash service is not necessary until the first engine overhaul depending on machine application and maintenance practices. FT4 components are warranted for 10,000 hours.
3. Large fuel tanks and 500- and 4,000-hour engine and hydraulic oil-service intervals decrease downtime for routine maintenance. Fluid-sample ports help speed preventative maintenance and troubleshooting.
4. Auto-idle automatically reduces engine speed when hydraulics aren't in use. Auto shutdown further preserves precious fuel.
5. Easy-to-read LCD monitor tracks scheduled maintenance intervals and issues reminders. Should a problem arise, it provides diagnostic information to help decrease downtime.
6. Upper-structure handrails provide three points of contact when accessing the engine compartment. Slip-resistant surfaces help improve stability.

Wet-sleeve engine liners provide uniform engine cooling for less oil breakdown and longer durability than cast-in-block designs.



5 Engine Oil Filter

Previous Maintenance

2015/04/07 0.0 h

Remains

375.8 h



470G LC



Engine	470G LC		
Manufacturer and Model	John Deere PowerTech™ PSS 6135		
Non-Road Emission Standard	EPA Final Tier 4/EU Stage IV		
Net Rated Power (ISO 9249)	274 kW (367 hp) at 2,000 rpm		
Cylinders	6		
Displacement	13.5 L (824 cu. in.)		
Off-Level Capacity	70% (35 deg.)		
Aspiration	Turbocharged, air-to-air charge-air cooler		
Cooling	Cool-on-demand hydraulic-driven, suction-type fan with remote-mounted drive		
Powertrain	2-speed propel with AutoShift		
Maximum Travel Speed			
Low	3.9 km/h (2.4 mph)		
High	5.5 km/h (3.4 mph)		
Drawbar Pull	33 537 kg (73,937 lb.)		
Hydraulics	Open center, load sensing		
Main Pumps	2 variable-displacement pumps		
Maximum Rated Flow	400 L/m (106 gpm) x 2		
Pilot Pump	1 gear		
Maximum Rated Flow	30 L/m (7.9 gpm)		
Pressure Setting	3900 kPa (566 psi)		
System Operating Pressure			
Circuits			
Implement	31 900 kPa (4,627 psi)		
Travel	35 300 kPa (5,120 psi)		
Swing	28 400 kPa (4,119 psi)		
Power Boost	35 300 kPa (5,120 psi)		
Controls	Pilot levers, short stroke, low-effort hydraulic pilot controls with shutoff lever		
Cylinders	Heat-treated, chrome-plated, polished cylinder rods; hardened steel (replaceable bushings) pivot pins		
	<i>Bore</i>	<i>Rod Diameter</i>	<i>Stroke</i>
Boom (2)	170 mm (6.7 in.)	115 mm (4.5 in.)	1590 mm (62.6 in.)
Arm (1)	190 mm (7.5 in.)	130 mm (5.1 in.)	1940 mm (76.4 in.)
Bucket (1)	170 mm (6.7 in.)	120 mm (4.7 in.)	1325 mm (52.2 in.)
Electrical			
Number of Batteries (12 volt)	2		
Battery Capacity	1,400 CCA		
Alternator Rating	100 amp		
Work Lights	5 halogen (1 mounted on frame, 2 mounted on boom, and 2 mounted on top of cab [1 rear facing])		
Undercarriage	Planetary final drives with axial-piston motors		
Rollers (each side)			
Carrier	3		
Track	9		
Shoes, Triple Semi-Grousers (each side)	53		
Track			
Adjustment	Hydraulic		
Guides	Front and center		
Chain	Sealed and lubricated		
Ground Pressure			
750-mm (30 in.) Single-Grouser Shoes	72.6 kPa (10.5 psi)		
900-mm (36 in.) Triple Semi-Grouser Shoes	61.3 kPa (8.9 psi)		



Swing Mechanism	470G LC
Speed	9.5 rpm
Torque	148 000 Nm (109,159 lb.-ft.)

Serviceability

Refill Capacities	
Fuel Tank	675 L (178 gal.)
Cooling System	62.3 L (16.5 gal.)
Engine Oil with Filter	44 L (12 gal.)
Hydraulic Tank	310 L (82 gal.)
Hydraulic System	510 L (135 gal.)
Gearbox	
Swing (each)	6.5 L (1.7 gal.)
Travel (each)	11 L (2.9 gal.)
Diesel Exhaust Fluid (DEF) Tank	71 L (18.8 gal.)

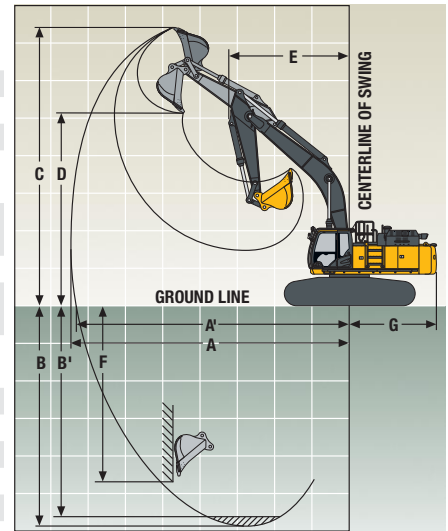
Operating Weights

With Full Fuel Tank; 79-kg (175 lb.) Operator; 2.34-m³ (3.06 cu. yd.), 1370-mm (54 in.), 2031-kg (4,478 lb.) Bucket; 3.9-m (12 ft. 10 in.) Arm; 8400-kg (18,519 lb.) Counterweight; Counterweight Removal Device; and 900-mm (36 in.) Triple Semi-Grouser Shoes

Operating Weight	51 218 kg (112,916 lb.)
------------------	-------------------------

Component Weights

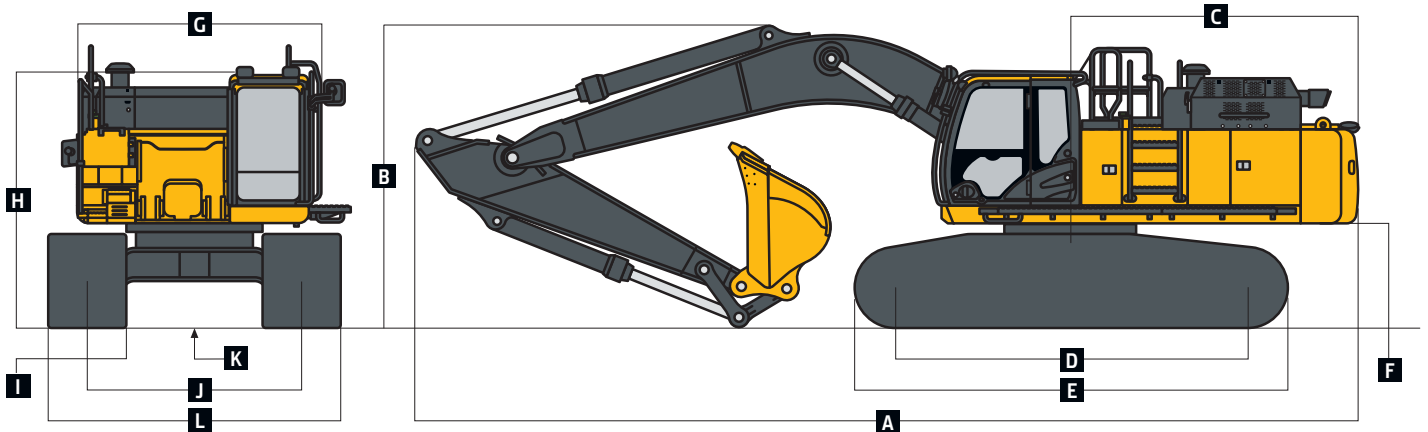
Undercarriage	
With 750-mm (30 in.) Single Grouser Shoes	18 323 kg (40,395 lb.)
With 900-mm (36 in.) Triple Semi-Grouser Shoes	18 978 kg (41,839 lb.)
Boom	
7-m (23 ft. 0 in.) 1-Piece (with arm cylinder)	4499 kg (9,919 lb.)
6.3-m (20 ft. 7 in.) Mass-Excavating (ME)	4544 kg (10,018 lb.)
Arm with Bucket Cylinder and Linkage	
2.9 m (9 ft. 6 in.)	2534 kg (5,587 lb.)
3.4 m (11 ft. 2 in.)	2539 kg (5,598 lb.)
3.9 m (12 ft. 10 in.)	2640 kg (5,820 lb.)
4.9 m (16 ft. 1 in.)	2320 kg (5,115 lb.)
Boom-Lift Cylinders (2), Total Weight	840 kg (1,853 lb.)



Operating Dimensions

Arm Length	2.9 m (9 ft. 6 in.)	2.9 m (9 ft. 6 in.) w/ 6.3-m (20 ft. 7 in.) ME Boom	3.4 m (11 ft. 2 in.)	3.9 m (12 ft. 10 in.)	4.9 m (16 ft. 1 in.)
Arm Digging Force					
SAE	252 kN (56,652 lb.)	249 kN (55,977 lb.)	215 kN (48,334 lb.)	196 kN (44,063 lb.)	175 kN (39,342 lb.)
ISO	259 kN (58,226 lb.)	256 kN (57,551 lb.)	222 kN (49,908 lb.)	201 kN (45,187 lb.)	177 kN (39,791 lb.)
Bucket Digging Force					
SAE	254 kN (57,101 lb.)	257 kN (57,776 lb.)	256 kN (57,551 lb.)	256 kN (57,551 lb.)	213 kN (47,884 lb.)
ISO	285 kN (64,071 lb.)	285 kN (64,071 lb.)	286 kN (64,295 lb.)	286 kN (64,295 lb.)	238 kN (53,505 lb.)
A Maximum Reach	11.40 m (37 ft. 5 in.)	10.86 m (35 ft. 8 in.)	12.06 m (39 ft. 7 in.)	12.49 m (41 ft. 0 in.)	13.34 m (43 ft. 9 in.)
A' Maximum Reach at Ground Level	11.17 m (36 ft. 8 in.)	10.61 m (34 ft. 10 in.)	11.84 m (38 ft. 10 in.)	12.28 m (40 ft. 3 in.)	13.14 m (43 ft. 1 in.)
B Maximum Digging Depth	7.28 m (23 ft. 11 in.)	6.23 m (20 ft. 5 in.)	7.77 m (25 ft. 6 in.)	8.27 m (27 ft. 2 in.)	9.11 m (29 ft. 11 in.)
B' Maximum Digging Depth at 2.44-m (8 ft. 0 in.) Flat Bottom	7.08 m (23 ft. 3 in.)	6.08 m (19 ft. 11 in.)	7.63 m (25 ft. 0 in.)	8.14 m (26 ft. 8 in.)	9.00 m (29 ft. 6 in.)
C Maximum Cutting Height	10.25 m (33 ft. 8 in.)	10.88 m (35 ft. 8 in.)	11.06 m (36 ft. 3 in.)	11.16 m (36 ft. 7 in.)	11.73 m (38 ft. 6 in.)
D Maximum Dumping Height	7.03 m (23 ft. 1 in.)	7.33 m (24 ft. 1 in.)	7.65 m (25 ft. 1 in.)	7.77 m (25 ft. 6 in.)	8.67 m (28 ft. 5 in.)
E Minimum Swing Radius	5.02 m (16 ft. 6 in.)	3.93 m (12 ft. 11 in.)	4.84 m (15 ft. 11 in.)	4.81 m (15 ft. 9 in.)	4.85 m (15 ft. 11 in.)
F Maximum Vertical Wall	5.27 m (17 ft. 3 in.)	5.02 m (16 ft. 6 in.)	6.59 m (21 ft. 7 in.)	6.98 m (22 ft. 11 in.)	8.42 m (27 ft. 7 in.)
G Tail-Swing Radius	3.67 m (12 ft. 0 in.)	3.67 m (12 ft. 0 in.)	3.67 m (12 ft. 0 in.)	3.67 m (12 ft. 0 in.)	3.67 m (12 ft. 0 in.)

Machine Dimensions		470G LC				
Arm Length		2.9 m (9 ft. 6 in.)	2.9 m (9 ft. 6 in.) w/ 6.3-m (20 ft. 7 in.) ME Boom	3.4 m (11 ft. 2 in.)	3.9 m (12 ft. 10 in.)	4.9 m (16 ft. 1 in.)
A Overall Length with Arm		12.10 m (39 ft. 8 in.)	11.32 m (37 ft. 2 in.)	12.01 m (39 ft. 5 in.)	12.01 m (39 ft. 5 in.)	12.00 m (39 ft. 4 in.)
B Overall Height with Arm		3.60 m (11 ft. 10 in.)	3.74 m (12 ft. 3 in.)	3.48 m (11 ft. 5 in.)	3.50 m (11 ft. 6 in.)	4.55 m (14 ft. 11 in.)
C Rear-End Length/Swing Radius		3.67 m (12 ft. 0 in.)				
D Distance Between Idler/Sprocket Centerline		4.47 m (14 ft. 8 in.)				
E Undercarriage Length		5.47 m (17 ft. 11 in.)				
F Counterweight Clearance		1.36 m (4 ft. 6 in.)				
G Upperstructure Width		3.48 m (11 ft. 5 in.)				
H Cab Height		3.33 m (10 ft. 11 in.)				
I Track Width with Triple Semi-Grouser Shoes		750 mm (30 in.) / 900 mm (36 in.)				
J Gauge Width						
Operating Position		2.89 m (9 ft. 6 in.)				
Transport Position		2.39 m (7 ft. 10 in.)				
K Ground Clearance		0.74 m (29 in.)				
L Overall Width with Triple Semi-Grouser Shoes						
750 mm (30 in.)						
Operating Position		3.64 m (11 ft. 11 in.)				
Transport Position		3.14 m (10 ft. 4 in.)				
900 mm (36 in.)						
Operating Position		3.79 m (12 ft. 5 in.)				
Transport Position		3.29 m (10 ft. 10 in.)				



Lift Capacities 470G LC

Boldface type indicates hydraulically limited capacity; lightface type indicates stability-limited capacities, in kg (lb.). Ratings at bucket lift hook; machine equipped with standard gauge and situated on firm, uniform supporting surface. Total load includes weight of cables, hook, etc. Figures do not exceed 87 percent of hydraulic capacities or 75 percent of weight needed to tip machine. All lift capacities are based on ISO 10567 (with power boost).

LOAD POINT HEIGHT	HORIZONTAL DISTANCE FROM CENTERLINE OF ROTATION									
	3.0 m (10 ft.)		4.5 m (15 ft.)		6.0 m (20 ft.)		7.5 m (25 ft.)		9.0 m (30 ft.)	
	Over Front	Over Side	Over Front	Over Side	Over Front	Over Side	Over Front	Over Side	Over Front	Over Side
7.5 m (25 ft.)									6350	6350
6.0 m (20 ft.)							10 300 (22,410)	10 300 (22,370)	9530 (19,670)	7440 (15,900)
4.5 m (15 ft.)					13 640 (29,430)	13 640 (29,430)	11 410 (24,740)	9960 (21,430)	10 080 (21,940)	7220 (15,490)
3.0 m (10 ft.)			22 520 (48,350)	21 220 (45,760)	15 940 (34,390)	13 520 (29,130)	12 670 (27,430)	9460 (20,360)	10 750 (23,350)	6940 (14,900)
1.5 m (5 ft.)			18 450 (44,110)	18 450 (42,600)	17 800 (38,470)	12 720 (27,400)	13 780 (29,820)	9000 (19,360)	11 350 (24,380)	6680 (14,340)
Ground Line			18 470 (42,920)	18 470 (41,210)	18 780 (40,650)	12 210 (26,280)	14 460 (31,300)	8660 (18,630)	11 120 (23,910)	6470 (13,900)
-1.5 m (-5 ft.)	11 930 (26,990)	11 930 (26,990)	23 290 (53,590)	19 040 (40,870)	18 770 (40,650)	11 980 (25,770)	14 520 (31,410)	8480 (18,230)	11 010 (23,670)	6370 (13,690)
-3.0 m (-10 ft.)	18 590 (42,050)	18 590 (42,050)	23 450 (50,810)	19 160 (41,140)	17 740 (38,340)	11 970 (25,760)	13 750 (29,620)	8460 (18,200)	10 530	6410
-4.5 m (-15 ft.)	26 700 (57,600)	26 700 (57,600)	20 090 (43,280)	19 520 (41,940)	15 400 (33,050)	12 180 (26,220)	11 620 (24,590)	8640 (18,640)		
-6.0 m (-20 ft.)			14 470 (30,450)	14 470 (30,450)	10 680 (21,930)	10 680 (21,930)				

Lift Capacities

470G LC

Boldface type indicates hydraulically limited capacity; lightface type indicates stability-limited capacities, in kg (lb.). Ratings at bucket lift hook; machine equipped with standard gauge and situated on firm, uniform supporting surface. Total load includes weight of cables, hook, etc. Figures do not exceed 87 percent of hydraulic capacities or 75 percent of weight needed to tip machine. All lift capacities are based on ISO 10567 (with power boost).

HORIZONTAL DISTANCE FROM CENTERLINE OF ROTATION

LOAD POINT HEIGHT	3.0 m (10 ft.)		4.5 m (15 ft.)		6.0 m (20 ft.)		7.5 m (25 ft.)		9.0 m (30 ft.)	
	Over Front	Over Side	Over Front	Over Side	Over Front	Over Side	Over Front	Over Side	Over Front	Over Side
<i>With 7.0-m (23 ft. 0 in.) boom, 2.9-m (9 ft. 6 in.) arm, 2.3-m³ (3.0 cu. yd.) bucket, and 900-mm (36 in.) triple semi-grouser shoes</i>										
6.0 m (20 ft.)					13 260	13 260	11 450	10 090		
					(28,560)	(28,560)	(24,910)	(21,660)		
4.5 m (15 ft.)			21 100	21 100	15 270	14 040	12 440	9720	10 830	7000
			(44,910)	(44,910)	(32,750)	(30,070)	(26,860)	(20,800)	(23,590)	(14,970)
3.0 m (10 ft.)					17 260	13 150	13 500	9280	11 310	6810
					(37,080)	(28,180)	(29,090)	(19,840)	(24,520)	(14,550)
1.5 m (5 ft.)					18 540	12 480	14 300	8910	11 350	6620
					(39,980)	(26,790)	(30,810)	(19,010)	(24,300)	(14,130)
Ground Line			18 040	18 040	18 810	12 150	14 570	8660	11 210	6490
			(42,030)	(41,240)	(40,680)	(26,070)	(31,400)	(18,490)	(24,020)	(13,870)
-1.5 m (-5 ft.)	14 410	14 410	23 410	19 250	18 100	12 090	14 110	8590		
	(32,620)	(32,620)	(51,050)	(41,460)	(39,140)	(25,910)	(30,340)	(18,340)		
-3.0 m (-10 ft.)	25 090	25 090	20 680	19 560	16 290	12 250	12 510	8710		
	(54,980)	(54,980)	(44,930)	(42,090)	(35,050)	(26,230)	(26,600)	(18,620)		
-4.5 m (-15 ft.)			16 300	16 300	12 690	12 670				
			(34,880)	(34,880)	(26,720)	(26,720)				
<i>With 7.0-m (23 ft. 0 in.) boom, 3.4-m (11 ft. 2 in.) arm, 2.7-m³ (2.1 cu. yd.) bucket, and 900-mm (36 in.) triple semi-grouser shoes</i>										
7.5 m (25 ft.)							10 340	10 340		
							(22,650)	(22,650)		
6.0 m (20 ft.)							10 990	10 390	9760	7420
							(23,910)	(22,330)	(18,910)	(15,850)
4.5 m (15 ft.)			19 590	19 590	14 580	14 400	12 040	9980	10 580	7260
			(41,940)	(41,940)	(31,450)	(31,040)	(26,110)	(21,460)	(23,040)	(15,560)
3.0 m (10 ft.)			21 700	21 010	16 770	13 520	13 220	9510	11 160	7010
			(51,720)	(45,320)	(36,170)	(29,140)	(28,610)	(20,470)	(24,240)	(15,050)
1.5 m (5 ft.)			13 630	13 630	18 390	12 820	14 190	9100	11 510	6780
			(32,940)	(32,940)	(39,730)	(27,620)	(30,710)	(19,590)	(24,740)	(14,570)
Ground Line			16 690	16 690	19 040	12 410	14 680	8820	11 330	6620
			(38,950)	(38,950)	(41,220)	(26,720)	(31,780)	(18,980)	(24,360)	(14,220)
-1.5 m (-5 ft.)	11 830	11 830	23 690	19 530	18 680	12 270	14 490	8690	11 270	6560
	(26,860)	(26,860)	(53,970)	(41,920)	(40,460)	(26,390)	(31,340)	(18,700)	(24,250)	(14,120)
-3.0 m (-10 ft.)	20 250	20 250	22 440	19 730	17 260	12 330	13 350	8730		
	(45,890)	(45,890)	(48,650)	(42,360)	(37,280)	(26,520)	(28,700)	(18,800)		
-4.5 m (-15 ft.)	23 560	23 560	18 530	18 530	14 340	12 600	10 290	9010		
	(50,800)	(50,800)	(39,860)	(39,860)	(30,650)	(27,140)				
<i>With 7.0-m (23 ft. 0 in.) boom, 3.9-m (12 ft. 10 in.) arm, 1.9-m³ (2.5 cu. yd.) bucket, and 900-mm (36 in.) triple semi-grouser shoes</i>										
7.5 m (25 ft.)									6350	6350
6.0 m (20 ft.)							10 300	10 300	9530	7540
							(22,410)	(22,410)	(19,670)	(16,130)
4.5 m (15 ft.)					13 640	13 640	11 410	10 090	10 080	7330
					(29,430)	(29,430)	(24,740)	(21,710)	(21,940)	(15,710)
3.0 m (10 ft.)			22 520	21 480	15 940	13 690	12 670	9590	10 750	7050
			(48,350)	(46,330)	(34,390)	(29,510)	(27,430)	(20,640)	(23,350)	(15,130)
1.5 m (5 ft.)			18 450	18 450	17 800	12 900	13 780	9130	11 360	6780
			(44,110)	(43,160)	(38,470)	(27,780)	(29,820)	(19,650)	(24,640)	(14,560)
Ground Line			18 470	18 470	18 780	12 390	14 460	8790	11 300	6580
			(42,920)	(41,770)	(40,650)	(26,660)	(31,300)	(18,910)	(24,280)	(14,130)
-1.5 m (-5 ft.)	11 930	11 930	23,290	19 300	18 770	12 150	14 520	8610	11 180	6470
	(26,990)	(26,990)	(53,590)	(41,430)	(40,650)	(26,140)	(31,410)	(18,510)	(24,040)	(13,910)
-3.0 m (-10 ft.)	18 590	18 590	23 450	19 420	17 740	12 150	13 750	8590	10 530	6510
	(42,050)	(42,050)	(50,810)	(41,700)	(38,340)	(26,130)	(29,620)	(18,480)		
-4.5 m (-15 ft.)	26 700	26 700	20 090	19 780	15 400	12 350	11 620	8770		
	(57,600)	(57,600)	(43,280)	(42,510)	(33,050)	(26,600)	(24,590)	(18,920)		
-6.0 m (-20 ft.)			14 470	14 470	10 680	10 680				
			(30,450)	(30,450)	(21,930)	(21,930)				

Lift Capacities (continued)

470G LC

Boldface type indicates hydraulically limited capacity; lightface type indicates stability-limited capacities, in kg (lb.). Ratings at bucket lift hook; machine equipped with standard gauge and situated on firm, uniform supporting surface. Total load includes weight of cables, hook, etc. Figures do not exceed 87 percent of hydraulic capacities or 75 percent of weight needed to tip machine. All lift capacities are based on ISO 10567 (with power boost).

LOAD POINT HEIGHT	HORIZONTAL DISTANCE FROM CENTERLINE OF ROTATION									
	3.0 m (10 ft.)		4.5 m (15 ft.)		6.0 m (20 ft.)		7.5 m (25 ft.)		9.0 m (30 ft.)	
	Over Front	Over Side	Over Front	Over Side	Over Front	Over Side	Over Front	Over Side	Over Front	Over Side
<i>With 7.0-m (23 ft. 0 in.) boom, 4.9-m (16 ft. 1 in.) arm, 1.4-m³ (1.8 cu. yd.) bucket, and 900-mm (36 in.) triple semi-grouser shoes</i>										
4.5 m (15 ft.)							10 670	10 670	9690	8140
							(23,180)	(23,180)		
3.0 m (10 ft.)			19 780	19 780	14 760	14 760	12 130	10 500	10 540	7820
			(42,530)	(42,530)	(31,890)	(31,890)	(26,310)	(22,610)	(22,920)	(16,820)
1.5 m (5 ft.)			24 060	21 610	17 130	13 950	13 530	9970	11 380	7500
			(51,890)	(46,540)	(37,040)	(30,080)	(29,330)	(21,470)	(24,710)	(16,140)
Ground Line	7330	7330	21 020	20 500	18 790	13 260	14 610	9530	11 960	7230
	(16,700)	(16,700)	(48,940)	(44,090)	(40,670)	(28,560)	(31,660)	(20,530)	(25,730)	(15,560)
-1.5 m (-5 ft.)	10 850	10 850	22 090	20 000	19 510	12 850	15 160	9240	11 760	7040
	(24,550)	(24,550)	(50,830)	(42,970)	(42,260)	(27,660)	(32,830)	(19,900)	(25,290)	(15,160)
-3.0 m (-10 ft.)	15 440	15 440	25 950	19 880	19 250	12 680	15 020	9100	11 670	6960
	(34,920)	(34,920)	(56,210)	(42,710)	(41,670)	(27,290)	(32,470)	(19,610)	(25,120)	(15,000)
-4.5 m (-15 ft.)	21 400	21 400	23 700	20 030	17 910	12 720	13 950	9130	10 790	7030
	(48,560)	(48,560)	(51,190)	(43,060)	(38,620)	(27,390)	(29,990)	(19,680)	(22,850)	(15,180)
-6.0 m (-20 ft.)	27 000	27 000	19 750	19 750	15 050	12 970	11 290	9360		
	(57,750)	(57,750)	(42,260)	(42,260)	(32,060)	(27,990)	(23,630)	(20,240)		
<i>With 6.3-m (20 ft. 7 in.) ME boom, 2.9-m (9 ft. 6 in.) ME arm, 2.5-m³ (3.3 cu. yd.) bucket, and 900-mm (36 in.) triple semi-grouser shoes</i>										
7.5 m (25 ft.)					12 480	12 480				
					(27,350)	(27,350)				
6.0 m (20 ft.)					13 440	13 440	12 060	10 060		
					(29,190)	(29,190)	(24,660)	(21,530)		
4.5 m (15 ft.)			19 860	19 860	15 220	14 420	12 810	9820		
			(42,650)	(42,650)	(32,910)	(31,040)	(27,860)	(21,080)		
3.0 m (10 ft.)			24 020	21 400	17 200	13 630	13 780	9460		
			(51,680)	(46,170)	(37,160)	(29,350)	(29,880)	(20,340)		
1.5 m (5 ft.)			26 230	20 130	18 660	12 950	14 550	9120		
			(56,710)	(43,340)	(40,370)	(27,890)	(31,510)	(19,600)		
Ground Line			26 140	19 690	19 120	12 560	14 750	8890		
			(56,720)	(42,310)	(41,420)	(27,020)	(31,910)	(19,120)		
-1.5 m (-5 ft.)	22 400	22 400	24 450	19 720	18 360	12 450	13 960	8840		
	(50,640)	(50,640)	(53,060)	(42,360)	(39,720)	(26,790)	(30,010)	(19,020)		
-3.0 m (-10 ft.)	27 190	27 190	21 060	20 070	15 940	12 630				
	(59,020)	(59,020)	(45,540)	(43,130)	(34,230)	(27,190)				

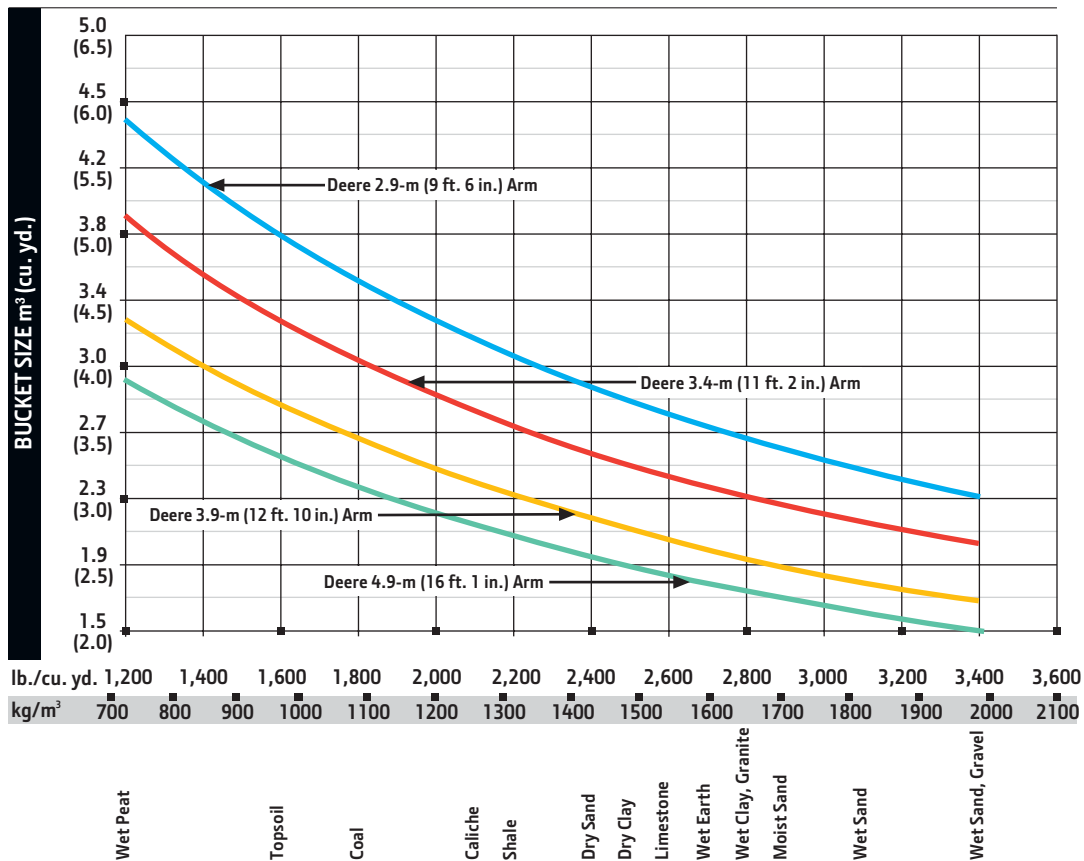
Buckets

470G LC

A full line of buckets is offered to meet a wide variety of applications. Digging forces are with power boost. Tooth selection includes the John Deere Fanggs™ or ESCO teeth standard. Replaceable cutting edges and a variety of teeth are available through John Deere Parts. Optional side cutters add 150 mm (6 in.) to bucket widths. Capacities are SAE heaped ratings.

Type Bucket	Bucket Width		Bucket Capacity		Bucket Weight	
	mm	in.	m ³	cu. yd.	kg	lb.
General Purpose	1372	54	1.76	2.3	1006	2,217
Heavy Duty	1067	42	1.41	1.8	1418	3,127
	1219	48	1.64	2.1	1507	3,323
	1372	54	1.87	2.4	1624	3,581
	1524	60	2.09	2.7	1712	3,774
	1676	66	2.30	3.0	1737	3,828
	1829	72	2.52	3.3	1844	4,065
	1829	72	3.20	4.2	1970	4,344
Truck Loading	1219	48	2.06	2.7	1802	3,973
Heavy Duty	1372	54	2.34	3.1	2033	4,482
1676	66	2.91	3.8	2271	5,007	
						1829

Bucket Selection Guide*



* Contact your John Deere dealer for optimum bucket and attachment selections. These recommendations are for general conditions and average use. Does not include optional equipment such as thumbs or couplers. Larger buckets may be possible when using light materials, for flat and level operations, less compacted materials, and volume loading applications such as mass-excavation applications in ideal conditions. Smaller buckets are recommended for adverse conditions such as off-level applications, rocks, and uneven surfaces. Bucket capacity indicated is SAE heaped.

Additional equipment

Key: ● Standard ▲ Optional or special

See your John Deere dealer for further information.

470G Engine

- Auto-idle system
- Automatic belt-tension device
- Batteries (2 – 12 volt)
- Coolant recovery tank
- Dual-element dry-type air filter
- Electronic engine control
- Enclosed fan guard (conforms to SAE J1308)
- Engine coolant to –37 deg. C (–34 deg. F)
- Fuel filter with water separator
- Full-flow oil filter
- Turbocharger with charge air cooler
- Cool-on-demand hydraulic-driven fan
- 500-hour engine-oil-change interval
- 70% (35 deg.) off-level capability
- Hydraulic fan reverser

Hydraulic System

- Reduced-drift valve for boom down, arm in
- Auxiliary hydraulic valve section
- Spring-applied, hydraulically released automatic swing brake
- Auxiliary hydraulic-flow adjustments through monitor
- Auto power lift
- 4,000-hour hydraulic-oil-change interval
- ▲ Auxiliary hydraulic lines
- ▲ Auxiliary pilot and electric controls
- ▲ Hydraulic filter restriction indicator kit
- ▲ Load-lowering control device
- ▲ Single-pedal propel control
- ▲ Pattern changer

Undercarriage

- Planetary drive with axial piston motors
- Propel motor shields
- Spring-applied, hydraulically released automatic propel brake
- Track guides, front idler and center
- 2-speed propel with automatic shift
- Upper carrier rollers (3)
- Sealed and lubricated track chain
- ▲ Triple semi-grouser shoes, 750 mm (30 in.)
- ▲ Triple semi-grouser shoes, 900 mm (36 in.)

470G Upperstructure

- Right- and left-hand mirrors
- Vandal locks with ignition key: Cab door / Fuel cap / Service doors / Toolbox
- Debris screen in side panel
- Service platform, left side
- Remote-mounted engine oil and fuel filters
- ▲ Counterweight-removal system

Front Attachments

- Centralized lubrication system
- Dirt seals on all bucket pins
- No-boom-arm option
- ▲ Boom, 7.0 m (23 ft. 0 in.)
- ▲ Boom, mass excavating (ME), 6.3 m (20 ft. 7 in.)
- ▲ Arm, ME, 2.9 m (9 ft. 6 in.)
- ▲ Arm, 3.4 m (11 ft. 2 in.)
- ▲ Arm, 3.9 m (12 ft. 10 in.)
- ▲ Arm, 4.9 m (16 ft. 1 in.)
- ▲ Buckets: Heavy duty / Heavy-duty high capacity / Side cutters and teeth

Operator's Station

- Adjustable independent-control positions (levers-to-seat, seat-to-pedals)
- AM/FM radio
- Auto climate control/air conditioner/heater/pressurizer
- Built-in Operator's Manual storage compartment and manual
- Cell-phone power outlet, 12 volt, 60 watt, 5 amp
- Coat hook
- Deluxe air-suspension heated cloth seat with 100-mm (4 in.) adjustable armrests
- Floor mat
- Front windshield wiper with intermittent speeds
- Gauges (illuminated): Diesel Exhaust Fluid (DEF) / Engine coolant / Fuel
- Horn, electric
- Hourmeter, electric
- Hydraulic shutoff lever, all controls
- Hydraulic warm-up control

470G Operator's Station (continued)

- Interior light
 - Large cup holder
 - Machine Information Center (MIC)
 - Mode selectors (illuminated): Power modes – 3 / Travel modes – 2 with automatic shift / Work mode – 1 / Boom mode
 - Multifunction, color LCD monitor with: Diagnostic capability / Multiple-language capabilities / Maintenance tracking / Clock / System monitoring with alarm features: Auto-idle indicator, engine-air-cleaner-restriction indicator light, engine check, engine-coolant-temperature indicator light with audible alarm, engine-oil-pressure indicator light with audible alarm, low-alternator-charge indicator light, low-fuel indicator light, low DEF indication with audible alarm, fault-code-alert indicator, fuel-rate display, wiper-mode indicator, work-lights-on indicator, and work-mode indicator
 - Motion alarm with cancel switch (conforms to SAE J994)
 - Power-boost switch on right console lever
 - Propel pedals and levers
 - SAE 2-lever control pattern
 - Seat belt, 51 mm (2 in.), retractable
 - Tinted glass
 - Transparent tinted overhead hatch
 - Hot/cold beverage compartment
 - ▲ Protection screens for cab front, rear, and side
 - ▲ Seat belt, 76 mm (3 in.), non-retractable
 - ▲ Window vandal-protection covers
- ## Electrical
- 100-amp alternator
 - Blade-type multi-fused circuits
 - Positive-terminal battery covers
 - JDLink™ wireless communication system
 - Rearview camera
 - ▲ Cab extension wiring harness
- ## Lights
- Work lights: Halogen / 2 mounted on boom / 1 mounted on frame / 2 mounted on top of cab

Net engine power is with standard equipment including air cleaner, exhaust system, alternator, and cooling fan, at test conditions specified per ISO 9249. No derating is required up to 2000-m (6,560 ft.) altitude. Specifications and design subject to change without notice. Wherever applicable, specifications are in accordance with SAE standards. Except where otherwise noted, these specifications are based on a unit with 1370-mm (54 in.) bucket, 900-mm (36 in.) triple semi-grouser shoes, 8400-kg (18,519 lb.) counterweight, full fuel tank, and 79-kg (175 lb.) operator.



Arm Dig Force 3.4 m (11 ft. 2 in.) (SAE)		Arm Dig Force 3.4 m (11 ft. 2 in.) (ISO)		Arm Dig Force 3.9 m (12 ft. 10 in.) (SAE)		Arm Dig Force 3.9 m (12 ft. 10 in.) (ISO)		Arm Dig Force 4.9 m (16 ft. 1 in.) (SAE)		Arm Dig Force 4.9 m (16 ft. 1 in.) (ISO)		Bucket Tip Radius		Number of Teeth
kN	lb.	kN	lb.	kN	lb.	kN	lb.	kN	lb.	kN	lb.	mm	in.	
222.4	50,000	229.7	51,628	202.2	45,447	207.3	46,606	179.7	40,392	181.7	40,854	1765	69.5	7
220.2	49,511	227.4	51,123	200.4	45,042	205.5	46,191	178.0	40,086	180.0	40,544	1816	71.5	5
220.2	49,511	227.4	51,123	200.4	45,042	205.5	46,191	178.0	40,086	180.0	40,544	1816	71.5	6
220.2	49,511	227.4	51,123	200.4	45,042	205.5	46,191	178.0	40,086	180.0	40,544	1816	71.5	6
220.2	49,511	227.4	51,123	200.4	45,042	205.5	46,191	178.0	40,086	180.0	40,544	1816	71.5	7
220.2	49,511	227.4	51,123	200.4	45,042	205.5	46,191	178.0	40,086	180.0	40,544	1816	71.5	7
220.2	49,511	227.4	51,123	200.4	45,042	205.5	46,191	178.0	40,086	180.0	40,544	1816	71.5	8
217.6	48,911	224.6	50,503	198.1	44,543	203.2	45,679	177.0	39,707	179.0	40,161	1880	74.0	6
217.6	48,911	224.6	50,503	198.1	44,543	203.2	45,679	177.0	39,707	179.0	40,161	1880	74.0	5
217.6	48,911	224.6	50,503	198.1	44,543	203.2	45,679	177.0	39,707	179.0	40,161	1880	74.0	5
217.6	48,911	224.6	50,503	198.1	44,543	203.2	45,679	177.0	39,707	179.0	40,161	1880	74.0	6
217.6	48,911	224.6	50,503	198.1	44,543	203.2	45,679	177.0	39,707	179.0	40,161	1880	74.0	6
217.6	48,911	224.6	50,503	198.1	44,543	203.2	45,679	177.0	39,707	179.0	40,161	1880	74.0	7

Additional equipment

Key: ● Standard ▲ Optional or special

See your John Deere dealer for further information.

470G Engine

- Auto-idle system
- Automatic belt-tension device
- Batteries (2 – 12 volt), 280-min. reserve capacity
- Coolant recovery tank
- Dual-element dry-type air filter
- Electronic engine control
- Enclosed fan guard (conforms to SAE J1308)
- Engine coolant to –37 deg. C (–34 deg. F)
- Fuel filter with water separator
- Full-flow oil filter
- Turbocharger with charge air cooler
- Muffler, under hood, with vertical curved end exhaust stack
- Cool-on-demand hydraulic-driven fan
- Glow-plug start aid
- 500-hour engine-oil-change interval
- 70% (35 deg.) off-level capability
- Hydraulic fan reverser

Hydraulic System

- Reduced-drift valve for boom down, arm in
- Auxiliary hydraulic valve section
- Spring-applied, hydraulically released automatic swing brake
- Auxiliary hydraulic-flow adjustments through monitor
- Auto power lift
- 4,000-hour hydraulic-oil-change interval
- ▲ Auxiliary hydraulic lines
- ▲ Auxiliary pilot and electric controls
- ▲ Hydraulic filter restriction indicator kit
- ▲ Load-lowering control device
- ▲ Single-pedal propel control
- ▲ Pattern changer

Undercarriage

- Planetary drive with axial piston motors
- Propel motor shields
- Spring-applied, hydraulically released automatic propel brake
- Track guides, front idler and center
- 2-speed propel with automatic shift
- Upper carrier rollers (3)
- Sealed and lubricated track chain
- ▲ Triple semi-grouser shoes, 750 mm (30 in.)
- ▲ Triple semi-grouser shoes, 900 mm (36 in.)

470G Upperstructure

- Right- and left-hand mirrors
- Vandal locks with ignition key: Cab door / Fuel cap / Service doors / Toolbox
- Debris screen in side panel
- Service platform, left side
- Remote-mounted engine oil and fuel filters
- ▲ Counterweight-removal system

Front Attachments

- Centralized lubrication system
- Dirt seals on all bucket pins
- No-boom-arm option
- ▲ Boom, 7.0 m (23 ft. 0 in.)
- ▲ Boom, mass excavating, 6.3 m (20 ft. 7 in.)
- ▲ Arm, mass excavating, 2.9 m (9 ft. 6 in.)
- ▲ Arm, 2.9 m (9 ft. 6 in.)
- ▲ Arm, 3.4 m (11 ft. 2 in.)
- ▲ Arm, 3.9 m (12 ft. 10 in.)
- ▲ Arm, 4.9 m (16 ft. 1 in.)
- ▲ Boom cylinder with plumbing to mainframe for no-boom-arm option
- ▲ Buckets: Heavy duty / Heavy-duty high capacity / Side cutters and teeth

Operator's Station

- Adjustable independent-control positions (levers-to-seat, seat-to-pedals)
- AM/FM radio
- Auto climate control/air conditioner/heater/pressurizer, 5.9 kW (20,000 Btu/hr.)
- Built-in Operator's Manual storage compartment and manual
- Cell-phone power outlet, 12 volt, 60 watt, 5 amp
- Coat hook
- Deluxe air-suspension heated cloth seat with 100-mm (4 in.) adjustable armrests
- Floor mat
- Front windshield wiper with intermittent speeds
- Gauges (illuminated): Engine coolant / Fuel
- Horn, electric
- Hourmeter, electric
- Hydraulic shutoff lever, all controls
- Hydraulic warm-up control
- Interior light
- Large cup holder

470G Operator's Station (continued)

- Machine Information Center (MIC)
- Mode selectors (illuminated): Power modes – 3 / Travel modes – 2 with automatic shift / Work mode – 1 / Boom mode
- Multifunction, color LCD monitor with: Diagnostic capability / Multiple-language capabilities / Maintenance tracking / Clock / System monitoring with alarm features: Auto-idle indicator, engine air cleaner restriction indicator light, engine check, engine coolant temperature indicator light with audible alarm, engine oil pressure indicator light with audible alarm, low-alternator-charge indicator light, low-fuel indicator light, fault code alert indicator, fuel-rate display, wiper-mode indicator, work-lights-on indicator, and work-mode indicator
- Fluid-level switch and indicator light for engine coolant and engine oil
- Motion alarm with cancel switch (conforms to SAE J994)
- Power-boost switch on right console lever
- Propel pedals and levers
- SAE 2-lever control pattern
- Seat belt, 51 mm (2 in.), retractable
- Tinted glass
- Transparent tinted overhead hatch
- Hot/cold beverage compartment
- ▲ 24- to 12-volt D.C. radio convertors, 10 amp
- ▲ Monitor system with alarm features: Hydraulic oil filter restriction indicator light
- ▲ Protection screens for cab front, rear, and side
- ▲ Seat belt, 76 mm (3 in.), non-retractable
- ▲ Window vandal-protection covers

Electrical

- 50-amp alternator
- Blade-type multi-fused circuits
- Positive-terminal battery covers
- JDLink™ wireless communication system
- Rearview camera
- ▲ Cab extension wiring harness

Lights

- Work lights: Halogen / 2 mounted on boom / 1 mounted on frame / 2 mounted on top of cab

Net engine power is with standard equipment including air cleaner, exhaust system, alternator, and cooling fan, at test conditions specified per ISO 9249. No derating is required up to 2000-m (6,560 ft.) altitude. Specifications and design subject to change without notice. Wherever applicable, specifications are in accordance with SAE standards. Except where otherwise noted, these specifications are based on a unit with 1370-mm (54 in.) bucket, 900-mm (36 in.) triple semi-grouser shoes, 9111-kg (20,086 lb.) counterweight, full fuel tank, and 79-kg (175 lb.) operator.

