

Crawler Excavator

R 926 compact
Litronic®

Operating Weight: 25,050 – 28,900 kg
Engine Output: 120 kW / 163 PS
Bucket Capacity: 0.55 – 1.35 m³



LIEBHERR

R 926^{compact} Litronic

Operating Weight: 25,050 – 28,900 kg
Engine Output: 120 kW / 163 HP
Bucket Capacity: 0.55 – 1.35 m³



Performance

The R 926 Compact combines the power and multi-functionality characteristic of a standard excavator, with the smaller dimensions perfectly suited to urban worksites. Thanks to its unique range of attachments and options, this machine may be configured for all types of earth-moving, pipe-laying and demolition works.

Reliability

With 50 years of experience designing and manufacturing crawler excavators, Liebherr France SAS is in a strong position to offer its customers ever more reliable machines. The high quality of the product is evident from its design to manufacture, continually improving the safety of the operator's working conditions. This renowned reliability is also evident in the numerous services that Liebherr has specifically developed to ensure its customers' satisfaction.

Comfort

More comfortable and spacious, featuring an exceptional field of vision, the R 926 Compact operator's cab incorporates the latest technologies to achieve the machine's optimal performance whilst maintaining very pleasant working conditions.

Economy

The new maintenance concept integrated into the R 926 Compact helps reduce intervention times to increase productivity. Operating costs are also lower thanks to increasingly intelligent energy management and the integration of an automatic tool change system.





Intelligent operating modes

- Sensitive Mode: for accurate lifting work
- Economy mode: for an economic and ecological operation. Recommended for normal working conditions
- Power Mode: for powerful excavation capacities in difficult applications
- Full Power Mode: especially designed for higher power, ideal for extreme applications



Performances

The R 926 Compact combines the power and multi-functionality characteristic of a standard excavator, with the smaller dimensions perfectly suited to urban worksites. Thanks to its unique range of attachments and options, this machine may be configured for all types of earth-moving, pipe-laying and demolition works.

Exceptional productivity and multi-functionality

High productivity for extraction and loading

Boasting a rotation radius of 1.69 m at the rear and of less than 1.90 m at the front, the R 926 Compact is perfectly stable and suitable for the narrowest of work-sites. The exceptional hydraulic performance of Liebherr excavators means shorter work cycles and higher productivity for extraction and loading.

A wide range of attachments

The R 926 excavator is suitable for all types of works, thanks to a wide range of Liebherr tools. Different sticks can be combined with a variety of booms (monoblock, offset monoblock and luffing booms). Finally, to make tool-changing easier, Liebherr offers a hydraulic quick-change attachment and the Likufix system as options.

The Liebherr system Tool-Management

The Tool-Management function makes it easy to change tools thanks to the tool recognition system. The programmed pressure and flow values are available from the moment the hydraulic tool is changed. This increases productivity thanks to the shorter fitting times.

Cutting-edge technology for top-level performance

The R 926 crawler excavator incorporates Liebherr's Positive Control hydraulic system. This system is controlled by Liebherr electronics, using strategically-positioned sensors. All of the machine's work is therefore faster, more accurate and fluid. What's more, as the two hydraulic pump circuits can operate either separately or in unison, this optimises the energy management of the R 926.

A Liebherr engine that is even cleaner and with enhanced performance

- New motor complies with the European Stage IIIB exhaust gas emission regulations thanks to its oxidation catalyst technology
- Especially designed for construction machine applications
- The most cutting-edge technology with the Liebherr Common-rail system
- Automatic idling optimises energy efficiency



An accurate and efficient dozer blade

- Radial fan blade
- Different blade lengths available
- Exemplary dozing accuracy and quality
- Only two lubrication points
- Protection of cylinder rods as standard
- Fitted tie-down rings



A robust undercarriage

- X-shaped design for improved stress distribution and a longer service life
- Easy to maintain thanks to the wide openings under the track rollers and the fastening of the steps to the vertical side of the track carriers
- Varied range of optional features such as dozing blade, rubber track pads or a fitted tool box to adapt to all types of worksites



Reliability

With 50 years of experience designing and manufacturing crawler excavators, Liebherr France SAS is in a strong position to offer its customers ever more reliable machines. The high quality of the product is evident from its design to manufacture, continually improving the safety of the operator's working conditions. This renowned reliability is also evident in the numerous services that Liebherr has specifically developed to ensure its customers' satisfaction.

Robustness at all levels

Accurately-sized mechanical structures

The R 926 Compact is a very robust, powerful and reliable machine, ideal for all types of works, including difficult applications. The attachments are fitted with moulded steel parts, strategically positioned on the joints. Furthermore, thanks to the continuous optimisation and systematic simulation of the structures, they can achieve the long service life our customers require.

Quality in the minutest details

The hydraulic, electric and lubrication lines are laid out to ensure optimum operating safety and the permanent uptime of the machine. The top-coat applied prior to assembly, as well as the surface treatment of the parts ensures a maximum protection against corrosion.

The cab operator's protection

The cab is fitted with a roll-over protection system (ROPS), pursuant to ISO standard 12117-2. Invisible, it allows the operator to work in complete tranquility.

Automatic operation monitoring

The operator can concentrate fully on the task: the integrated on-board electronics ensure a constant re-adjustment to preset values. The operator can also access the operating parameters via the monitoring display.



Liebherr key components

- A perfect harmonisation of the machine's elements for worksite applications
- The main mechanically-welded structures, (undercarriage, attachment and uppercarriage) designed by Liebherr
- Manufactured by Liebherr:
 - heat engine
 - hydraulic pumps
 - transfer box
 - gears
 - slewing mechanism
 - slew ring
 - electronic components



Liebherr services

- Permanent stock of more than 80,000 item references, available 24/7 on Liebherr-P@rts 24 online web portal, for a lower machine downtime
- Programmes such as ReMan, Re-Built and Repair, for a perfect and economical solution including the manufacturer's warranty and quality
- Continually-updated personalised documentation system



Large storage space

- Storage spaces behind the seat, with optional chiller for keeping drinks cool at all times
- Fully retractable windscreen, stowable under the roof
- 12 V plug for operating the optional chiller and all other types of appliances
- Optional foot-rest available for enhanced comfort especially when working on inclines



Comfort

More comfortable and spacious, featuring an exceptional field of vision, the R 926 Compact operator's cab incorporates the latest technologies to achieve the machine's optimal performance whilst maintaining very pleasant working conditions.

Comfortable, spacious and ergonomic: all in one

A first class work space

In this new cab, the operator has a pneumatic seat, an enlarged space and a very comfortable work environment. Depending on the operator's needs, the Liebherr Premium seat can be chosen as an option. This seat offers maximum seating comfort thanks to its pneumatic lumbar support, its electronic weight-actuated height adjuster as well as its air-conditioning with activated charcoal and built-in fan.

Low noise level and vibrations

To increase the operator's comfort and productivity, the noise level inside the operator's cab is exceptionally low. The cab is mounted on viscoelastic rivets to fully absorb vibrations. The rubber flanges that support the pipes also actively participate in reducing external noise.

7" colour touch screen

A true control panel, this robust and reliable screen (ingress protection IP 65) offers numerous adjustment and monitoring options, such as the fuel consumption delay, air-conditioning, tool control, radio, etc. And thanks to its high-resolution video compatibility, it can also display the images from the rear backup camera.

Ergonomic and precise joysticks

- Sensitive joysticks with proximity switches allows greater responsiveness while resuming rpm
- Joysticks ergonomically positioned for greater comfort during work and more accurate movement
- The proportional control allows a very fine manoeuvrability for a sensitive, accurate and more fluid operation of hydraulic tools



High visibility

- Rear backup camera integrated in the counter-weight as standard, for rear visibility and heightened operating safety
- Optional side camera available for greater safety
- Optimised design of the whole uppercarriage gives the operator a wider field of vision



Automatic centralised lubrication system as standard

- Fully automated centralised lubrication system as standard for rapid maintenance, less manual lubrication and shorter machine downtime
- Covers all the lubrication points of the uppercarriage and equipment, other than the connecting link (optional)
- Adequate lubrication of each joint guaranteed, for a longer service life of the moving parts
- Safety aspect: the lubrication can be performed without the operator having to leave the cab





Economy

The new maintenance concept integrated into the R 926 Compact helps reduce intervention times to increase productivity. Operating costs are also lower thanks to increasingly intelligent energy management and the integration of an automatic tool change system.

Cost-effectiveness in the short, medium and long-term

Multi-purpose

The R 926 Compact is a multi-purpose machine that can be used for a great variety of purposes: its compact structure means it is perfect for worksites where space is restricted, such as town centres or narrow forest tracks. What's more, it is capable of performing the traditional work of a standard crawler excavator, such as earth-moving, pipe-laying, demolition and material-handling works.

Compact equipment

The kinematics of the attachments especially designed for the R 926 Compact allow for effective operations, even at heights, thanks to the boom joint being very close to the machine's centre of rotation. The total rotation radius is less than 1.90 m.

Easy access

All the maintenance points have been designed for easy access and to shorten intervention times. The gull-wing hood openings allow all operations to be performed from the ground. The operations can be carried out in complete safety, whether they concern the air filter, the fuel filters, the engine oil filter and the radiators or the checking of engine oil levels.

Intelligent energy management

The integrated engineering of Liebherr's systems allows constant monitoring of the fuel consumption thanks to the effective management of the engine and hydraulics. The new diesel engine, automatic idling, electronic engine speed sensing regulation and Regeneration Plus are just some of the elements that contribute towards better energy management. This consumption control minimises the discharge of toxic gases into the atmosphere whilst cutting operating costs.

Likufix and Tool-Management

- Ideal for worksites requiring tool changes
- Mechanical and hydraulic coupling of tools possible without leaving the cab
- Optimised excavator operation with automatic tool change system
- Intelligent Tool-Management option, for automatic tool detection, pressure and corresponding flow adjustment



LiDAT fleet management system

- Single interface for the comprehensive management of the whole fleet
- Optimises your fleet of machines thanks to its overview of the maintenance and service hour reports
- Fuel consumption monitoring
- Exact location of machines
- Improved safety thanks to predetermined geographic areas and operating times

Long live progress with the R 926 Compact

Variety of robust attachments

- Cast steel joints for greater stress resistance
- Parts have a long service life thanks to the automated lubrication, fitted as standard
- Wide choice of attachments to adapt the excavator to the customer's needs

A multi-purpose tool holder

- Wide range of specific Liebherr buckets and tools
- Patented Liebherr Z tooth system for increased productivity
- Likufix quick coupling system for greater flexibility

Work in complete safety

- Rear-view camera fitted in the counter-weight, for a clear view and increased operating safety
- Protected access to the uppercarriage and cab
- ROPS certified cab frame: rollover resistant
- Emergency exit through the rear window regardless of the excavator's configuration





A very comfortable operator's workstation

- Spacious and air-conditioned work space for increased productivity
- Pneumatic seat as standard
- 7" high resolution, easy-to-use, colour touch screen
- Fully retractable window screen

The latest technologies for higher performance

- New Liebherr Stage IIIB engine technology with oxidation catalyst
- Automatic idling and engine cutoff in the event of inactivity
- Positive Control hydraulic system with Liebherr electronics for more accurate and fluid movements

Shorter maintenance time

- Completely new maintenance concept with elements within arm's reach, accessible from the ground
- Filters grouped together for shorter maintenance interventions
- Adequate lubrication guaranteed thanks to automatic centralised lubrication system, fitted as standard
- Motor oil level accessible from ground-level for checking and filling

A reliable undercarriage

- Reliable and robust X-shaped undercarriage that is easy to tie down thanks to the integrated eyelets
- Easy to maintain
- Several dozer blades available
- Rubber track pads for urban use (optional)
- Additional storage box available

Technical Data



Engine

Rating per ISO 9249	120 kW (163 HP) at 1,900 RPM
Model	Liebherr D 834 A7
Type	4 cylinder in-line
Bore/Stroke	108/125 mm
Displacement	4.58 l
Engine operation	4-stroke diesel
	Common-Rail injection system
Exhaust gas treatment	exhaust-gas recirculation (eagr)
	oxidation catalyst
	emission standard stage IIIB
Option	Liebherr particle filter
Cooling	water-cooled and integrated motor oil cooler, after-cooled and fuel cooled
Air cleaner	dry-type air cleaner with pre-cleaner, primary and safety elements
Fuel tank	385 l
Electrical system	
Voltage	24 V
Batteries	2 x 135 Ah/12 V
Starter	24 V/5 kW
Alternator	three phase current 28 V/110 A
Engine idling	sensor-controlled
Motor management	connection to the integrated excavator system controlling via CAN-BUS to the economical utilisation of the service that is available



Hydraulic Controls

The controlling is conducted via the integrated excavator system technology, input and output modules, communicated via the CAN-BUS with the electronic central unit.

Power distribution	via control valve with integrated safety valves
Servo circuit	
Attachment and swing	proportional via joystick levers
Travel	– with proportionally functioning foot pedals and adjusted with a plugable lever
	– Speed pre-selection
Additional functions	proportional regulation via slide switches or foot pedals



Hydraulic System

Hydraulic system	Positive Control. Dual circuit hydraulic system for independent and need-based quantity allotment via the hydraulic pumps; sensor-guided. Features high system dynamics and sensibility provided by integrated system controlling
Hydraulic pump	Liebherr variable displacement pump built in transversal plate style, in parallel arrangement with integrated transfer box
Max. flow	2 x 223 l/min.
Max. pressure	350 bar
Pump management	electronic pump management via the integrated system controlling (CAN-BUS) synchronous to the control block
Hydraulic tank	153 l
Hydraulic system	max. 360 l
Hydraulic oil filter	1 full flow filter (10 µm)
Hydraulic oil cooler	compact cooler, consisting of a water cooler, sandwiched with hydraulic oil cooler, fuel cooler and after-cooler cores and hydrostatically driven fan
Mode selection	adjustment of engine and hydraulic performance via a mode pre-selector to match application, e.g. for especially economical and environmentally friendly operation or for maximum digging performance and heavy-duty jobs
RPM adjustment	stepless adjustment of engine output via RPM at each selected mode
Tool Control	10 preadjustable pump flows and pressures for add-on tools



Swing Drive

Drive by	Liebherr swash plate motor, shockless and antireaction
Transmission	Liebherr compact planetary reduction gear
Swing ring	Liebherr, sealed single race ball bearing swing ring, internal teeth
Swing speed	0 – 11.5 RPM stepless
Swing torque	70.5 kNm
Holding brake	wet multi-disc (spring applied, pressure released)
Option	pedal controlled positioning brake

Technical Data



Operator's Cab

Cab	ROPS safety cab structure with individual windscreens or featuring a slide-in subpart under the ceiling, work headlights integrated in the ceiling, a door with a side window (can be opened on both sides), large stowing and depositing possibilities, shock-absorbing suspension, sounddamping insulating, tinted laminated safety glass, separate window shades for the sunroof window and windscreen, 12 V plug, storage bins, lunchbox, cup holder
Operator's seat	Comfort seat, airsprung with automatic weight adjustment, vertical and horizontal seat damping including consoles and joysticks. Seat and armrests adjustable separately and in combination, seat heating as standard
Control system	arm consoles, swinging with the seat
Operation and displays	large high resolution colour display with selfexplanatory operation via touch screen, video, versatile adjusting, control and monitoring facilities, e.g. climate control, implement and tool parameters
Air-conditioning	standard automatic air-conditioning, ambient air function, fast de-icing and demisting at the press of a button, air vents can be operated via a menu; ambient air and fresh air filters can be easily replaced and are accessible from the outside; heating-cooling unit, designed for extreme outside temperatures, sensors for solar radiation, inside and outside temperatures
Noise emission	
ISO 6396	L_{pA} (inside cab) = 67 dB(A)
2000/14/EC	L_{WA} (surround noise) = 101 dB(A)



Undercarriage

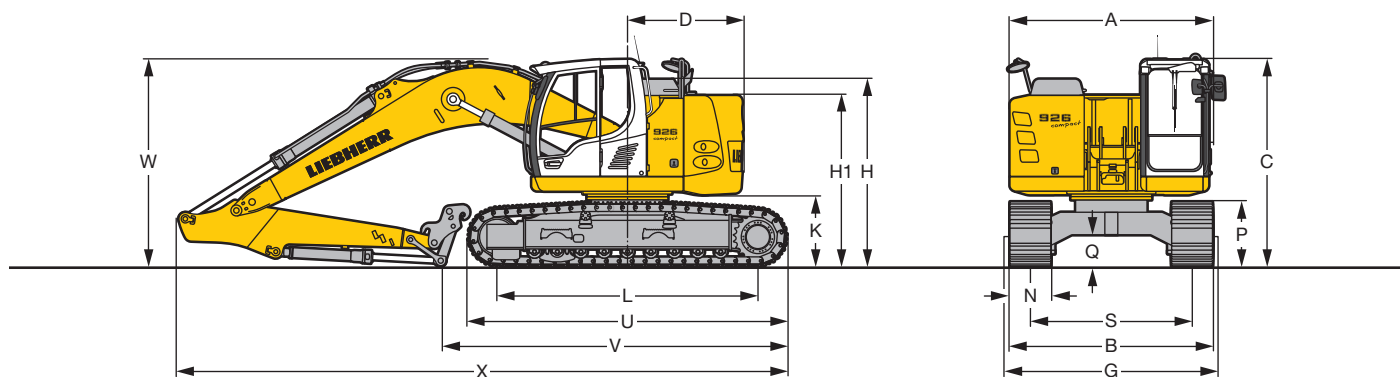
LC	gauge 2,380 mm
Drive	Liebherr swash plate motors with integrated brake valves on both sides
Transmission	Liebherr planetary reduction gears
Travel speed	low range – 3.3 km/h high range – 5.5 km/h
Net drawbar pull on crawler	207 kN
Track components	B 60, maintenance-free
Track rollers/Carrier rollers	9/2
Tracks	sealed and greased
Track pads	triple-grouser
Digging locks	wet multi-discs (spring applied, pressure released)
Brake valves	integrated into travel motors
Lashing eyes	integrated



Attachment

Type	combination of resistant steel plates and cast steels components
Hydraulic cylinders	Liebherr cylinders with special seal-system, shock protection
Pivots	sealed, low maintenance
Lubrication	automatic central lubrication system (except link and tilt geometry)
Hydraulic connections	pipes and hoses equipped with SAE split-flange connections
Bucket	fitted as standard with Liebherr tooth system

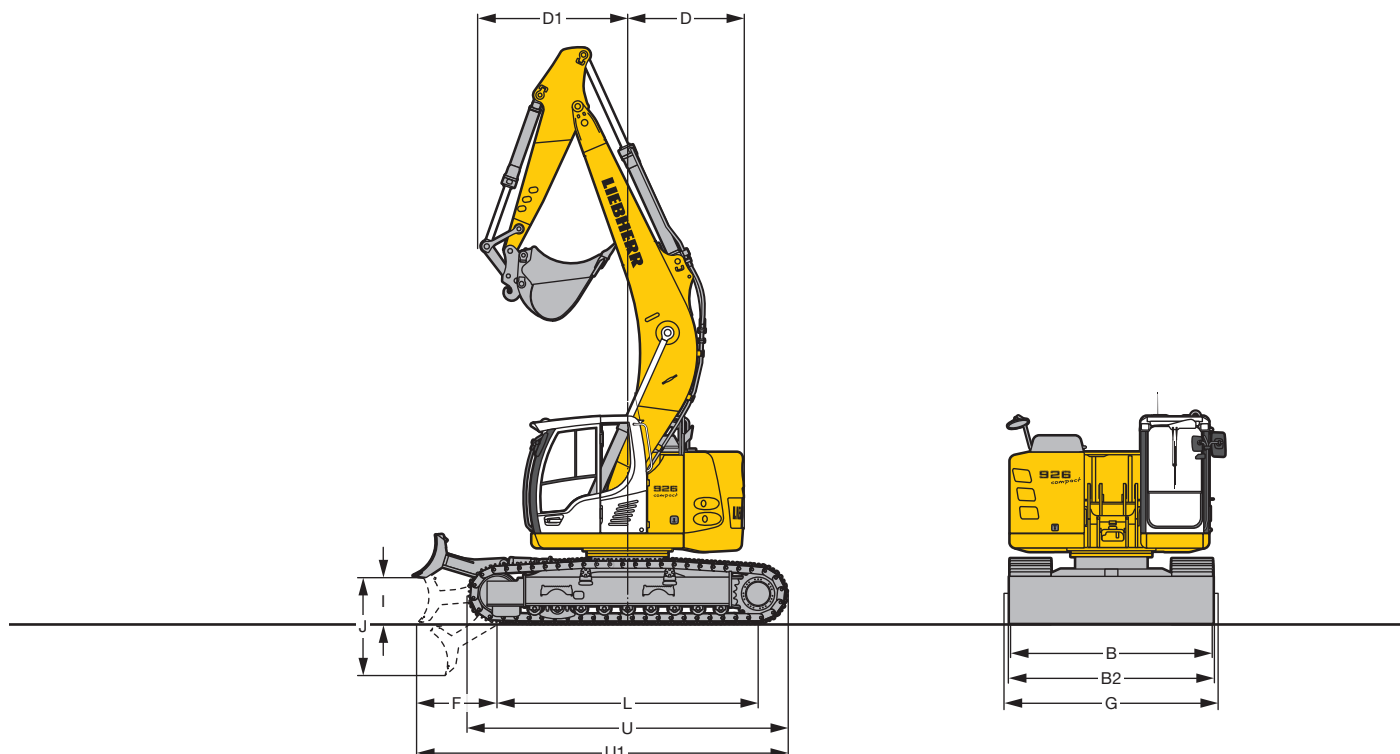
Dimensions



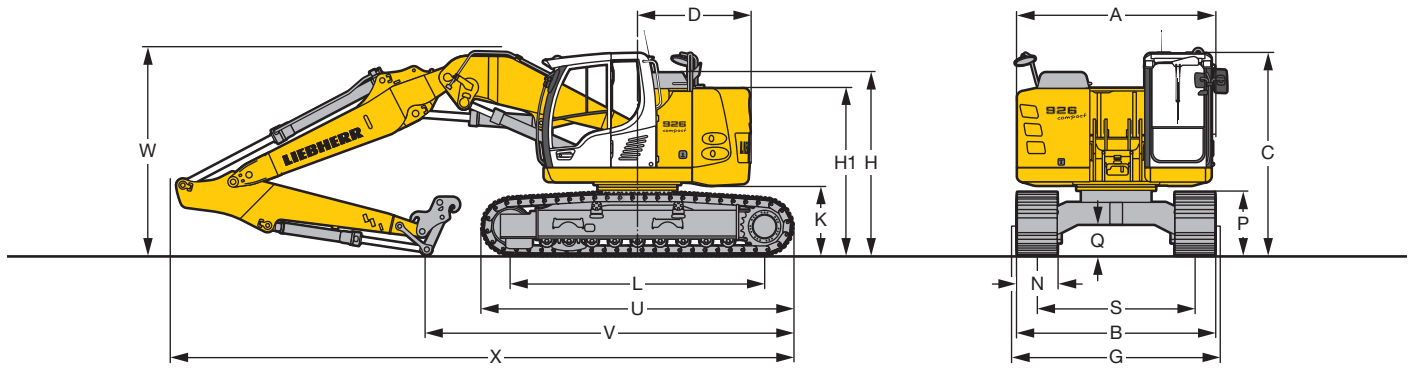
	mm
A	2,980
C	3,070
D	1,700
F	1,180
H	2,760
H1	2,520
I	675
J	1,435
K	1,060
L	3,838
P	955
Q	465
S	2,380
U	4,700
U1	5,440
N	500 600 750
B	2,880 2,980 3,130
G	2,920 2,920 3,220
B2	3,000 3,000 3,150

Mono Boom 5.70 m				
Stick length	m	2.35	2.65	2.95
V	mm	5,650	5,350	5,100
W	mm	3,000	3,050	3,050
X	mm	9,050	9,050	9,050
D1 without quick coupler with bucket	mm	2,250	2,150	2,050
D1 with quick coupler and bucket	mm	2,300	2,200	2,100

Offset Mono Boom 5.70 m				
Stick length	m	2.35	2.65	2.95
V	mm	5,700	5,400	5,100
W	mm	2,950	2,950	2,950
X	mm	9,050	9,050	9,050
D1 without quick coupler with bucket	mm	2,150	2,050	1,950
D1 with quick coupler and bucket	mm	2,200	2,100	2,000

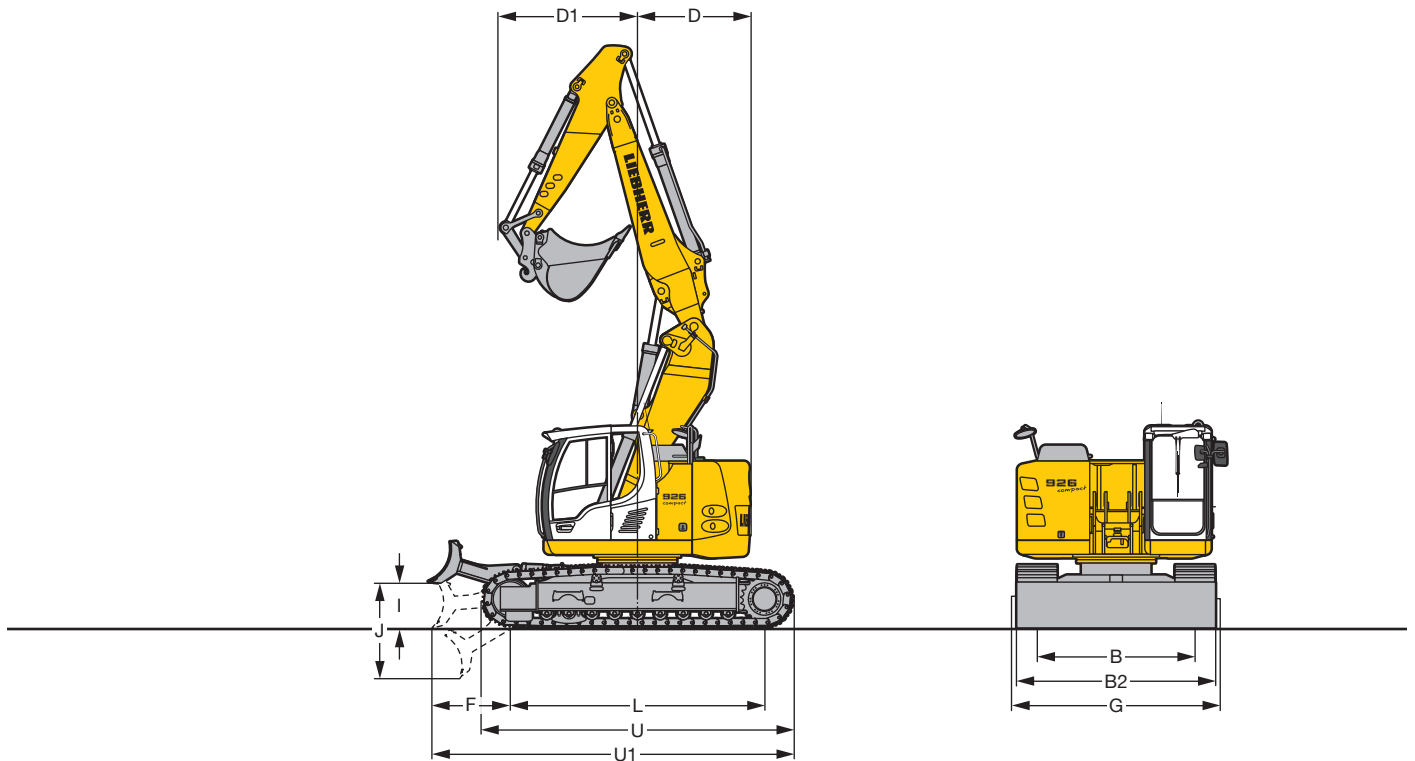


Dimensions



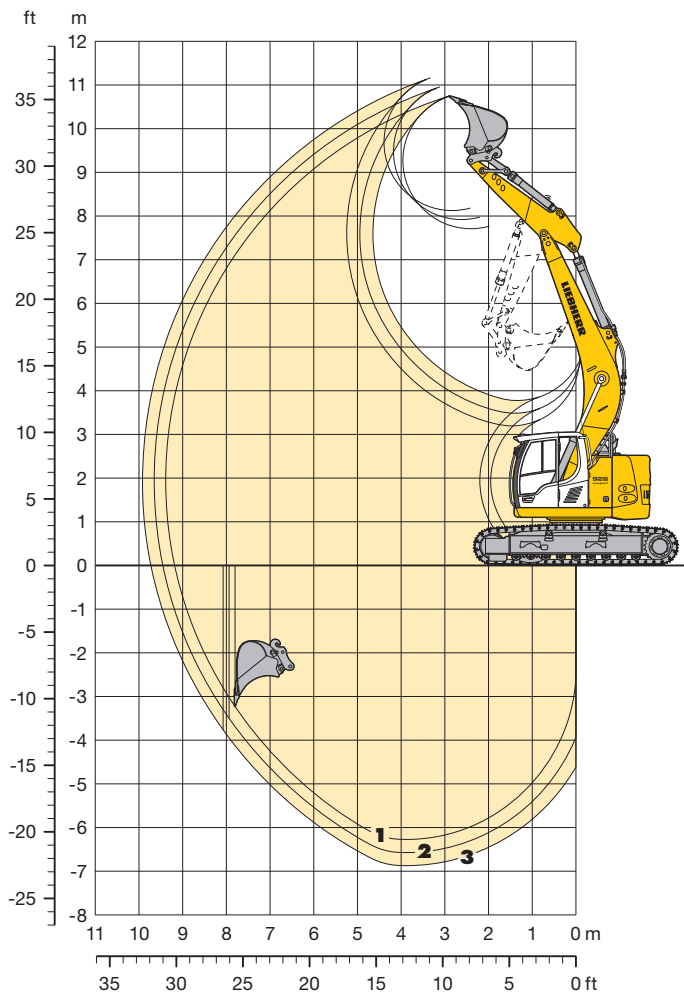
	mm		
A	2,980		
C	3,070		
D	1,700		
F	1,180		
H	2,760		
H1	2,520		
I	675		
J	1,435		
K	1,060		
L	3,838		
P	955		
Q	465		
S	2,380		
U	4,700		
U1	5,440		
N	500	600	750
B	2,880	2,980	3,130
G	2,920	2,920	3,220
B2	3,000	3,000	3,150

Two-piece Boom 3.60 m				
Stick length	m	2.35	2.65	2.95
V	mm	6,050	5,800	5,550
W	mm	3,050	3,100	3,150
X	mm	9,350	9,400	9,400
D1 without quick coupler with bucket	mm	2,050	1,950	1,900
D1 with quick coupler and bucket	mm	2,100	2,000	1,950



Backhoe Bucket

with Mono Boom 5.70 m



Digging Envelope

		1	2	3
Stick length	m	2.35	2.65	2.95
Max. digging depth	m	6.25	6.55	6.85
Max. reach at ground level	m	9.20	9.45	9.70
Max. dump height	m	7.70	7.90	8.10
Max. teeth height	m	10.75	10.95	11.15

Digging Forces without Quick Coupler

		1	2	3
Digging force ISO	kN	119	111	103
	t	12.1	11.3	10.5
Breakout force ISO	kN	141	141	141
	t	14.4	14.4	14.4

with Quick Coupler

Digging force ISO	kN	113	105	97
	t	11.5	10.7	9.9
Breakout force ISO	kN	117	117	117
	t	11.9	11.9	11.9

Operating Weight and Ground Pressure

Operating weight includes basic machine with mono boom 5.70 m, stick 2.95 m, quick coupler 48 and bucket 0.80 m³.

LC-Undercarriage		without blade			with blade		
Pad width	mm	500	600	750	500	600	750
Weight	kg	25,050	25,300	26,050	26,800	27,050	27,800
Ground pressure	kg/cm²	0.61	0.51	0.42	0.65	0.55	0.45

Buckets Machine stability per ISO 10567* (75% of tipping capacity)

Cutting width mm	Capacity ISO 7451 m³	Weight kg	LC-Undercarriage					
			without blade			with blade		
			Stick length (m)			Stick length (m)		
			2.35	2.65	2.95	2.35	2.65	2.95
650 ¹⁾	0.55	480	□	□	□	□	□	□
850 ¹⁾	0.60	520	□	□	□	□	□	□
1,050 ¹⁾	0.80	600	□	□	□	□	□	□
1,250 ¹⁾	1.00	685	□	□	□	□	□	□
1,400 ¹⁾	1.15	755	□	□	□	□	□	□
1,400 ¹⁾	1.35	780	□	□	△	□	□	□
650 ²⁾	0.55	515	□	□	□	□	□	□
850 ²⁾	0.60	550	□	□	□	□	□	□
1,050 ²⁾	0.80	635	□	□	□	□	□	□
1,250 ²⁾	1.00	715	□	□	□	□	□	□
1,400 ²⁾	1.15	785	□	□	□	□	□	□
1,400 ²⁾	1.35	810	□	△	△	□	□	△

* Indicated loads are based on ISO 10567 max. stick length, lifted 360° on firm

1) Standard bucket for direct mounting with teeth Z 35

2) Standard bucket for mounting to quick coupler 48 with teeth Z 35

Other backhoes available on request

Max. material weight □ = ≤ 1.8 t/m³, △ = ≤ 1.5 t/m³, ▢ = ≤ 1.2 t/m³, ▲ = not authorized

Lift Capacities

with Mono Boom 5.70 m

Stick 2.35 m

Height m	LC-Under-carriage	3.0 m	4.5 m	6.0 m	7.5 m	Max. reach m
9.0	without blade with blade					5.3* 5.3*
7.5	without blade with blade		6.1* 6.1*			4.5* 4.5*
6.0	without blade with blade	7.5* 7.5*	6.5* 6.5*	5.1 5.5	5.9*	4.2 4.4
4.5	without blade with blade	10.8* 10.8*	7.7* 7.7*	4.9 5.3	6.4*	3.4 3.7
3.0	without blade with blade		7.1 7.6	9.3* 9.3*	4.6 5.0	7.1* 7.1*
1.5	without blade with blade		6.5 7.1	10.5* 10.5*	4.4 4.7	7.6* 7.6*
0	without blade with blade	7.4* 7.4*	6.3 6.8	10.7* 10.7*	4.2 4.5	7.6 7.8
-1.5	without blade with blade	12.0* 12.0*	6.2 6.7	10.0* 10.0*	4.1 4.5	7.5* 7.5*
-3.0	without blade with blade	11.1* 11.1*	6.3 6.8	8.5* 8.5*	4.2 4.5	6.3* 6.3*
-4.5	without blade with blade	7.1* 7.1*				5.5* 5.5*

Stick 2.65 m

Height m	LC-Under-carriage	3.0 m	4.5 m	6.0 m	7.5 m	Max. reach m
9.0	without blade with blade					4.5* 4.5*
7.5	without blade with blade		5.7* 5.7*			4.0* 4.0*
6.0	without blade with blade		6.1* 6.1*	5.2 5.5	5.6*	3.8* 3.8*
4.5	without blade with blade	9.8* 9.8*	7.3* 7.3*	5.0 5.3	6.1* 6.1*	3.2 3.5
3.0	without blade with blade	11.5* 11.5*	7.2 7.7	9.0* 9.0*	4.7 5.0	3.3 3.6
1.5	without blade with blade	5.1* 5.1*	6.6 7.1	10.3* 10.3*	4.4 4.7	7.5* 7.5*
0	without blade with blade	7.6* 7.6*	6.3 6.8	10.7* 10.7*	4.2 4.5	7.6 7.8
-1.5	without blade with blade	11.3* 11.3*	6.2 6.7	10.2* 10.2*	4.1 4.4	7.5 7.6
-3.0	without blade with blade	12.0* 12.0*	6.2 6.8	8.8* 8.8*	4.1 4.5	6.6* 6.6*
-4.5	without blade with blade	8.2* 8.2*	6.2* 6.2*			5.6* 5.6*

Stick 2.95 m

Height m	LC-Under-carriage	3.0 m	4.5 m	6.0 m	7.5 m	Max. reach m
9.0	without blade with blade		4.1* 4.1*			4.0* 4.0*
7.5	without blade with blade		5.3* 5.3*	4.2* 4.2*		3.5* 3.5*
6.0	without blade with blade		5.7* 5.7*	5.2 5.3	5.3*	3.4* 3.4*
4.5	without blade with blade	8.7* 8.7*	6.9* 6.9*	5.0 5.4	5.9*	3.0 3.3
3.0	without blade with blade	13.6* 13.6*	7.3 7.8	8.6* 8.6*	4.7 5.1	6.6* 6.6*
1.5	without blade with blade	6.5* 6.5*	6.7 7.2	10.0* 10.0*	4.4 4.8	7.4* 7.4*
0	without blade with blade	7.7* 7.7*	6.3 6.8	10.6* 10.6*	4.2 4.5	7.6 7.7
-1.5	without blade with blade	10.7* 10.7*	6.2 6.7	10.3* 10.3*	4.1 4.4	7.5 7.6
-3.0	without blade with blade	12.1 12.7*	6.2 6.7	9.2* 9.2*	4.1 4.4	6.8* 6.8*
-4.5	without blade with blade	9.3* 9.3*	6.4 6.9*			6.9* 6.9*

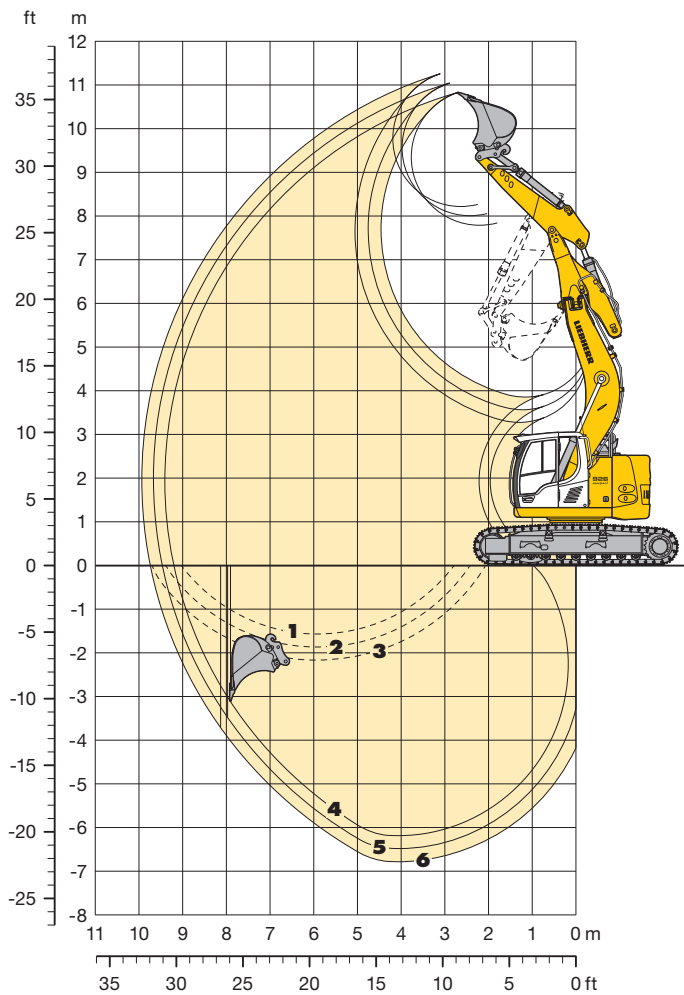
Height Can be slewed through 360° In longitudinal position of undercarriage Max. reach * Limited by hydr. capacity

The lift capacities on the load hook of the Liebherr quick coupler 48 without attachment are stated in metric tonnes (t), and can be lifted 360° on firm, level supporting surface. Adjacent values are valid for the undercarriage when in the longitudinal position. Capacities are valid for 600 mm wide triple grouser pads. Indicated loads are based on ISO 10567 standard and do not exceed 75 % of tipping or 87 % of hydraulic capacity (indicated by *) or are limited through the allowed lift capacity of the load hook on the quick coupler (12 t). Without quick coupler the lift capacities will increase by 250 kg, without bucket cylinder, link and lever they increase by an additional 280 kg. Lifting capacity of the excavator is limited by machine stability and hydraulic capacity.

According to European Standard, EN 474-5: In the European Union excavators have to be equipped with an overload warning device, a load diagram and automatic safety check valves on hoist cylinders and stick cylinder(s), when they are used for lifting operations which require the use of lifting accessories.

Backhoe Bucket

with Offset Mono Boom 5.70 m



Digging Envelope

		4	5	6
Stick length	m	2.35	2.65	2.95
Max. digging depth	m	6.20	6.50	6.80
Max. reach at ground level	m	9.20	9.45	9.75
Max. dump height	m	7.80	8.00	8.20
Max. teeth height	m	10.80	11.05	11.25

Digging Forces without Quick Coupler

		4	5	6
Digging force ISO	kN	119	111	103
	t	12.1	11.3	10.5
Breakout force ISO	kN	141	141	141
	t	14.4	14.4	14.4

with Quick Coupler

Digging force ISO	kN	113	105	97
	t	11.5	10.7	9.9
Breakout force ISO	kN	117	117	117
	t	11.9	11.9	11.9

Operating Weight and Ground Pressure

Operating weight includes basic machine with offset mono boom 5.70 m, stick 2.95 m, quick coupler 48 and bucket 0.80 m³.

LC-Undercarriage		without blade			with blade		
Pad width	mm	500	600	750	500	600	750
Weight	kg	25,900	26,150	26,900	27,650	27,900	28,650
Ground pressure	kg/cm²	0.63	0.53	0.44	0.67	0.57	0.47

Buckets Machine stability per ISO 10567* (75% of tipping capacity)

Cutting width mm	Capacity ISO 7451 m³	Weight kg	LC-Undercarriage					
			without blade			with blade		
			Stick length (m)			Stick length (m)		
			2.35	2.65	2.95	2.35	2.65	2.95
650 ¹⁾	0.55	480	□	□	□	□	□	□
850 ¹⁾	0.60	520	□	□	□	□	□	□
1,050 ¹⁾	0.80	600	□	□	□	□	□	□
1,250 ¹⁾	1.00	685	□	□	□	□	□	□
1,400 ¹⁾	1.15	755	□	□	□	□	□	□
1,400 ¹⁾	1.35	780	□	△	△	□	□	△
650 ²⁾	0.55	515	□	□	□	□	□	□
850 ²⁾	0.60	550	□	□	□	□	□	□
1,050 ²⁾	0.80	635	□	□	□	□	□	□
1,250 ²⁾	1.00	715	□	□	□	□	□	□
1,400 ²⁾	1.15	785	□	□	△	□	□	□
1,400 ²⁾	1.35	810	△	△	■	□	△	△

* Indicated loads are based on ISO 10567 max. stick length, lifted 360° on firm

1) Standard bucket for direct mounting with teeth Z 35

2) Standard bucket for mounting to quick coupler 48 with teeth Z 35

Other backhoes available on request

Max. material weight □ = ≤ 1.8 t/m³, △ = ≤ 1.5 t/m³, ■ = ≤ 1.2 t/m³, ▲ = not authorized

Lift Capacities

with Offset Mono Boom 5.70 m

Stick 2.35 m

Height m	LC-Under-carriage	3.0 m	4.5 m	6.0 m	7.5 m	Max. reach m
9.0	without blade with blade	5.9* 5.9*				5.3* 5.3*
7.5	without blade with blade		6.3* 6.3*			4.6* 4.6*
6.0	without blade with blade	7.7* 7.7*	6.6* 6.6*	5.0 5.4	5.8*	4.0 4.3
4.5	without blade with blade	11.0* 11.0*	7.6 7.7*	4.8 5.1	6.3*	3.2 3.5
3.0	without blade with blade		6.7 7.3	4.4 4.7	6.8* 6.8*	3.1 3.1
1.5	without blade with blade		6.0 6.6	10.0* 10.0*	4.0 4.4	7.3* 7.3*
0	without blade with blade	7.2* 7.2*	5.7 6.2	9.9* 9.9*	3.8 4.2	7.3 7.3*
-1.5	without blade with blade	11.1 11.8*	5.6 6.2	9.1* 9.1*	3.7 4.1	6.9* 6.9*
-3.0	without blade with blade	9.5* 9.5*	5.8 6.3	7.5* 7.5*	3.8 4.2	5.6* 5.6*
-4.5	without blade with blade	5.5* 5.6*				4.5* 4.5*

Stick 2.65 m

Height m	LC-Under-carriage	3.0 m	4.5 m	6.0 m	7.5 m	Max. reach m
9.0	without blade with blade					4.6* 4.6*
7.5	without blade with blade		5.8* 5.8*			4.0* 4.0*
6.0	without blade with blade		6.3* 6.3*	5.1 5.4	5.6*	3.7 4.0*
4.5	without blade with blade	10.2* 10.2*	7.4* 7.4*	4.8 5.2	6.0* 6.0*	3.0 3.3
3.0	without blade with blade	10.2* 10.2*	6.9 7.4	8.8* 8.8*	4.4 4.4	6.7* 6.7*
1.5	without blade with blade	4.7* 4.7*	6.1 6.6	9.8* 9.8*	4.1 4.4	7.2* 7.2*
0	without blade with blade	7.4* 7.4*	5.7 6.2	10.0* 10.0*	3.8 4.2	7.3 7.3*
-1.5	without blade with blade	11.0 11.1*	5.6 6.1	9.3* 9.3*	3.7 4.1	7.0* 7.0*
-3.0	without blade with blade	10.4* 10.4*	5.7 6.2	7.9* 7.9*	3.7 4.1	5.9* 5.9*
-4.5	without blade with blade	6.7* 6.7*	5.3* 5.3*			4.7* 4.7*

Stick 2.95 m

Height m	LC-Under-carriage	3.0 m	4.5 m	6.0 m	7.5 m	Max. reach m
9.0	without blade with blade		4.1* 4.1*			4.0* 4.0*
7.5	without blade with blade		5.3* 5.3*	4.2* 4.2*		3.6* 3.6*
6.0	without blade with blade		5.9* 5.9*	5.2 5.3*		3.5 3.5*
4.5	without blade with blade	9.2* 9.2*	7.0 7.0*	4.9 5.2	5.8* 5.8*	2.9 3.1
3.0	without blade with blade	13.3 13.4*	7.0 7.5	8.5* 8.5*	4.5 4.8	6.5* 6.5*
1.5	without blade with blade	6.2* 6.2*	6.2 6.7	9.6* 9.6*	4.1 4.5	7.1* 7.1*
0	without blade with blade	7.5* 7.5*	5.7 6.3	10.0* 10.0*	3.8 4.2	7.3* 7.3*
-1.5	without blade with blade	10.5* 10.5*	5.6 6.1	9.5* 9.5*	3.7 4.0	7.1* 7.1*
-3.0	without blade with blade	11.1 11.1*	5.6 6.1	8.2* 8.2*	3.7 4.0	6.2* 6.2*
-4.5	without blade with blade	7.7* 7.7*	5.9 5.9*			4.5 4.8*

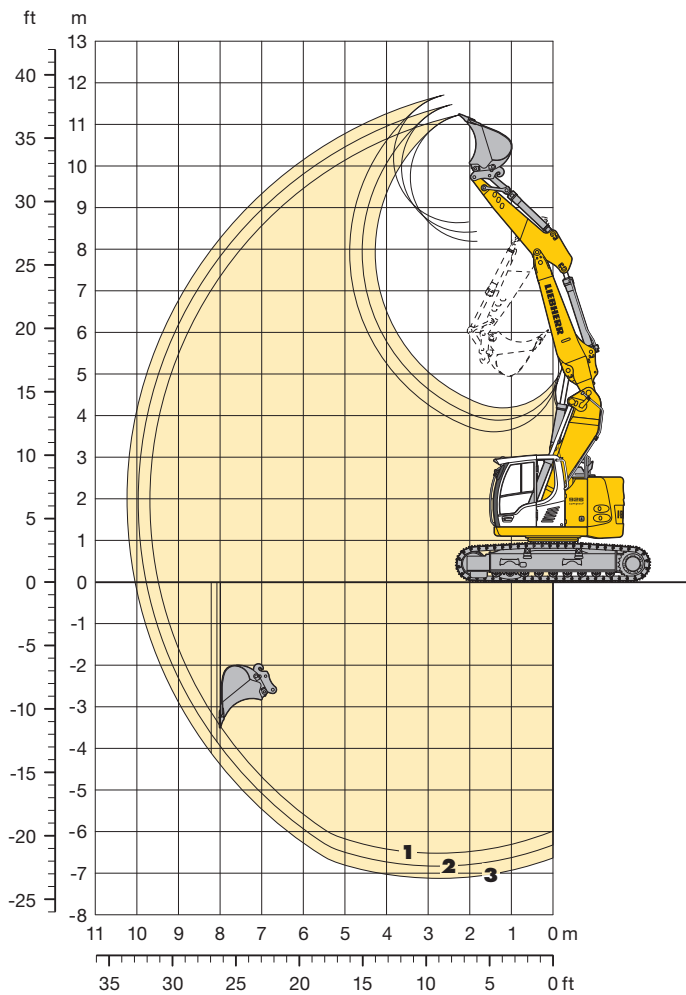
Height Can be slewed through 360° In longitudinal position of undercarriage Max. reach * Limited by hydr. capacity

The lift capacities on the load hook of the Liebherr quick coupler 48 without attachment are stated in metric tonnes (t), and can be lifted 360° on firm, level supporting surface. Adjacent values are valid for the undercarriage when in the longitudinal position. Capacities are valid for 600 mm wide triple grouser pads. Indicated loads are based on ISO 10567 standard and do not exceed 75 % of tipping or 87 % of hydraulic capacity (indicated by *) or are limited through the allowed lift capacity of the load hook on the quick coupler (12 t). Without quick coupler the lift capacities will increase by 250 kg, without bucket cylinder, link and lever they increase by an additional 280 kg. Lifting capacity of the excavator is limited by machine stability and hydraulic capacity.

According to European Standard, EN 474-5: In the European Union excavators have to be equipped with an overload warning device, a load diagram and automatic safety check valves on hoist cylinders and stick cylinder(s), when they are used for lifting operations which require the use of lifting accessories.

Backhoe Bucket

with Two-piece Boom 3.60 m



Digging Envelope

		1	2	3
Stick length	m	2.35	2.65	2.95
Max. digging depth	m	6.50	6.80	7.10
Max. reach at ground level	m	9.50	9.75	10.05
Max. dump height	m	8.20	8.40	8.65
Max. teeth height	m	11.20	11.45	11.70

Digging Forces without Quick Coupler

		1	2	3
Digging force ISO	kN	119	111	103
	t	12.1	11.3	10.5
Breakout force ISO	kN	141	141	141
	t	14.4	14.4	14.4

with Quick Coupler

Digging force ISO	kN	113	105	97
	t	11.5	10.7	9.9
Breakout force ISO	kN	117	117	117
	t	11.9	11.9	11.9

Operating Weight and Ground Pressure

Operating weight includes basic machine with two-piece boom 3.60 m, stick 2.95 m, quick coupler 48 and bucket 0.80 m³.

LC-Undercarriage		without blade			with blade		
Pad width	mm	500	600	750	500	600	750
Weight	kg	26,150	26,400	27,150	27,900	28,150	28,900
Ground pressure	kg/cm²	0.63	0.53	0.44	0.67	0.57	0.47

Buckets Machine stability per ISO 10567* (75% of tipping capacity)

Cutting width mm	Capacity ISO 7451 m³	Weight kg	LC-Undercarriage					
			without blade			with blade		
			Stick length (m)			Stick length (m)		
			2.35	2.65	2.95	2.35	2.65	2.95
650 ¹⁾	0.55	480	□	□	□	□	□	□
850 ¹⁾	0.60	520	□	□	□	□	□	□
1,050 ¹⁾	0.80	600	□	□	□	□	□	□
1,250 ¹⁾	1.00	685	□	□	□	□	□	□
1,400 ¹⁾	1.15	755	□	□	□	□	□	□
1,400 ¹⁾	1.35	780	□	△	△	□	□	△
650 ²⁾	0.55	515	□	□	□	□	□	□
850 ²⁾	0.60	550	□	□	□	□	□	□
1,050 ²⁾	0.80	635	□	□	□	□	□	□
1,250 ²⁾	1.00	715	□	□	□	□	□	□
1,400 ²⁾	1.15	785	□	△	△	□	□	□
1,400 ²⁾	1.35	810	△	■	■	□	△	△

* Indicated loads are based on ISO 10567 max. stick length, lifted 360° on firm

1) Standard bucket for direct mounting with teeth Z 35

2) Standard bucket for mounting to quick coupler 48 with teeth Z 35

Other backhoes available on request

Max. material weight □ = ≤ 1.8 t/m³, △ = ≤ 1.5 t/m³, ■ = ≤ 1.2 t/m³, ▲ = not authorized

Lift Capacities

with Two-piece Boom 3.60 m

Stick 2.35 m

Height m	LC-Under-carriage	3.0 m	4.5 m	6.0 m	7.5 m	Max. reach m
9.0	without blade with blade	6.4* 6.4*				4.9* 4.9*
7.5	without blade with blade		6.6* 6.6*	4.5* 4.5*		4.4* 4.4*
6.0	without blade with blade	7.9* 7.9*	7.5* 7.5*	5.3* 5.7		3.8* 4.1
4.5	without blade with blade	12.8* 12.8*	7.9* 8.3	8.6* 8.6*	3.4* 3.7	3.1* 3.4
3.0	without blade with blade	13.8* 14.0*	7.7* 8.1	9.8* 9.8*	3.3* 3.6	2.7* 3.0
1.5	without blade with blade	13.8* 14.5*	7.7* 8.1*	10.3* 10.3*	3.1* 3.4	2.6* 2.8
0	without blade with blade	13.5* 14.4*	7.1* 7.7	10.3* 10.3*	3.0* 3.2	2.6* 2.9
-1.5	without blade with blade	12.8* 13.8*	6.7* 7.2	10.6* 10.6*		2.8* 3.1
-3.0	without blade with blade	12.6* 13.6*	6.3* 6.8	9.7* 9.7*		3.4* 3.8
-4.5	without blade with blade	9.2* 9.2*	4.6* 4.6*			3.2* 3.2*

Stick 2.65 m

Height m	LC-Under-carriage	3.0 m	4.5 m	6.0 m	7.5 m	Max. reach m
9.0	without blade with blade		4.6* 4.6*			4.3* 4.3*
7.5	without blade with blade		6.0* 6.0*	4.8* 4.8*		3.8* 3.8*
6.0	without blade with blade	6.6* 6.6*	7.0* 7.0*	5.4* 5.7*		3.5* 3.8*
4.5	without blade with blade	12.0* 12.0*	7.9* 8.3*	5.3* 5.6	3.5* 3.8	2.9* 3.2
3.0	without blade with blade	13.8* 14.1*	7.7* 8.1	9.5* 9.5*	3.4* 3.7	2.6* 2.8
1.5	without blade with blade	13.8* 14.4*	7.7* 8.0	10.2* 10.2*	3.2* 3.5	2.5* 2.7
0	without blade with blade	13.7* 14.6*	7.2* 7.7	10.3* 10.3*	3.0* 3.3	2.5* 2.7
-1.5	without blade with blade	12.9* 13.9*	6.8* 7.3	10.5* 10.5*	2.8* 3.1	2.6* 2.9
-3.0	without blade with blade	12.6* 13.6*	6.3* 6.8	10.2* 10.2*		3.2* 3.4
-4.5	without blade with blade	11.1* 11.1*	6.1* 6.1*			3.5* 3.5*

Stick 2.95 m

Height m	LC-Under-carriage	3.0 m	4.5 m	6.0 m	7.5 m	Max. reach m
9.0	without blade with blade		4.7* 4.7*			3.8* 3.8*
7.5	without blade with blade		5.4* 5.4*	4.7* 4.7*		3.4* 3.4*
6.0	without blade with blade		6.1* 6.1*	5.4* 5.7	4.1* 3.8	3.3* 3.3*
4.5	without blade with blade	11.2* 11.2*	7.9* 7.9*	5.3* 5.6	3.6* 3.8*	2.7* 3.0
3.0	without blade with blade	13.9* 14.2*	7.7* 8.1	9.3* 9.3*	3.5* 3.8	2.5* 2.7
1.5	without blade with blade	13.7* 14.3*	7.6* 8.0	10.1* 10.1*	3.3* 3.6	2.3* 2.5
0	without blade with blade	13.9* 14.5*	7.3* 7.8	10.2* 10.2*	3.1* 3.3	2.3* 2.6
-1.5	without blade with blade	13.0* 13.9*	6.8* 7.3	10.4* 10.4*	2.9* 3.1	2.5* 2.7
-3.0	without blade with blade	12.6* 13.6*	6.4* 6.9	10.5* 10.5*		2.9* 3.2
-4.5	without blade with blade	12.3* 12.8*	6.1* 6.6	7.4* 7.4*		3.6* 3.6*

Height Can be slewed through 360° In longitudinal position of undercarriage Max. reach * Limited by hydr. capacity

The lift capacities on the load hook of the Liebherr quick coupler 48 without attachment are stated in metric tonnes (t), and can be lifted 360° on firm, level supporting surface. Adjacent values are valid for the undercarriage when in the longitudinal position. Capacities are valid for 600 mm wide triple grouser pads with adjusting cylinder in optimal position. Indicated loads are based on ISO 10567 standard and do not exceed 75 % of tipping or 87 % of hydraulic capacity (indicated by *) or are limited through the allowed lift capacity of the load hook on the quick coupler (12 t). Without quick coupler the lift capacities will increase by 250 kg, without bucket cylinder, link and lever they increase by an additional 280 kg. Lifting capacity of the excavator is limited by machine stability and hydraulic capacity.

According to European Standard, EN 474-5: In the European Union excavators have to be equipped with an overload warning device, a load diagram and automatic safety check valves on hoist cylinders and stick cylinder(s), when they are used for lifting operations which require the use of lifting accessories.

Available Buckets

HD Buckets Machine stability per ISO 10567* (75% of tipping capacity)

LC-Undercarriage								
Cutting width mm	Capacity ISO 7451 m³	Weight kg	without blade			with blade		
			Stick length (m)			Stick length (m)		
			2.35	2.65	2.95	2.35	2.65	2.95
Mono Boom 5.70 m								
650 ¹⁾	0.55	545	□	□	□	□	□	□
850 ¹⁾	0.60	585	□	□	□	□	□	□
1,050 ¹⁾	0.80	675	□	□	□	□	□	□
1,250 ¹⁾	1.00	770	□	□	□	□	□	□
1,400 ¹⁾	1.15	850	□	□	□	□	□	□
650 ²⁾	0.55	575	□	□	□	□	□	□
850 ²⁾	0.60	615	□	□	□	□	□	□
1,050 ²⁾	0.80	705	□	□	□	□	□	□
1,250 ²⁾	1.00	800	□	□	□	□	□	□
1,400 ²⁾	1.15	880	□	□	△	□	□	□
Offset Mono Boom 5.70 m								
650 ¹⁾	0.55	545	□	□	□	□	□	□
850 ¹⁾	0.60	585	□	□	□	□	□	□
1,050 ¹⁾	0.80	675	□	□	□	□	□	□
1,250 ¹⁾	1.00	770	□	□	□	□	□	□
1,400 ¹⁾	1.15	850	□	□	△	□	□	□
650 ²⁾	0.55	575	□	□	□	□	□	□
850 ²⁾	0.60	615	□	□	□	□	□	□
1,050 ²⁾	0.80	705	□	□	□	□	□	□
1,250 ²⁾	1.00	800	□	□	□	□	□	□
1,400 ²⁾	1.15	880	□	△	△	□	□	△
Two-piece Boom 3.60 m								
650 ¹⁾	0.55	545	□	□	□	□	□	□
850 ¹⁾	0.60	585	□	□	□	□	□	□
1,050 ¹⁾	0.80	675	□	□	□	□	□	□
1,250 ¹⁾	1.00	770	□	□	□	□	□	□
1,400 ¹⁾	1.15	850	□	□	△	□	□	□
650 ²⁾	0.55	575	□	□	□	□	□	□
850 ²⁾	0.60	615	□	□	□	□	□	□
1,050 ²⁾	0.80	705	□	□	□	□	□	□
1,250 ²⁾	1.00	800	□	□	□	□	□	□
1,400 ²⁾	1.15	880	□	△	△	□	□	△

* Indicated loads are based on ISO 10567 max. stick length, lifted 360° on firm

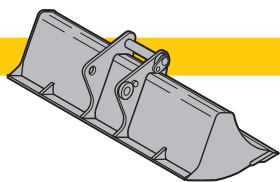
¹⁾ HD bucket for direct mounting with teeth Z 35

²⁾ HD bucket for mounting to quick coupler 48 with teeth Z 35

Other backhoes available on request

Max. material weight □ = ≤ 1.8 t/m³, △ = ≤ 1.5 t/m³, ■ = ≤ 1.2 t/m³, ▲ = not authorized

Available Tools



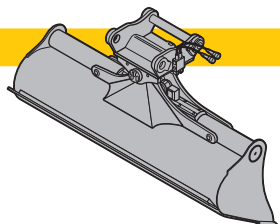
Rigid Ditchcleaning Bucket

GRL 90, for direct mounting

Cutting width	mm	1,500	2,000	2,000	2,010	2,400
Capacity	m³	0.50	0.45	0.70	0.85	0.85
Weight	kg	400	415	506	528	586

GRL 90, for mounting to quick coupler 48

Cutting width	mm	1,500	2,000	2,000	2,400
Capacity	m³	0.50	0.70	1.20	0.85
Weight	kg	430	520	640	610



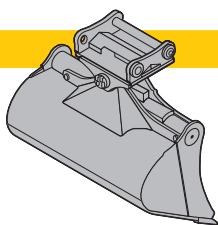
Ditchcleaning Bucket

GRL 90, 2 x 50° tiltable, for direct mounting

Cutting width	mm	1,600	1,600	2,000	2,000	2,000	2,200	2,400
Capacity	m³	0.55	0.80	0.50	0.70	1.00	0.80	0.85
Weight	kg	650	790	610	800	870	800	870

GRL 90, 2 x 50° tiltable, for mounting to quick coupler 48

Cutting width	mm	1,600	2,000	2,000	2,200	2,200	2,200	2,400
Capacity	m³	0.80	0.50	1.00	1.15	1.40	1.40	1.25
Weight	kg	850	690	940	980	1,000	1,000	1,000



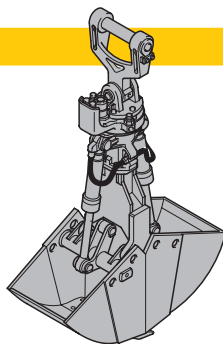
Tiltable Bucket

SL 90, 2 x 50° tiltable, for direct mounting

Cutting width	mm	1,500	1,600	1,600
Capacity	m³	1.20	0.80	1.00
Weight	kg	–	750	810
Weight in HD-version	kg	870	–	–

SL 90, 2 x 50° tiltable, for mounting to quick coupler 48

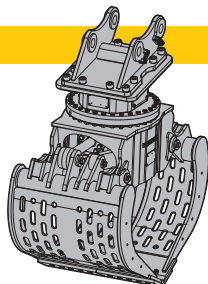
Cutting width	mm	1,500	1,600	1,600	1,600	1,600
Capacity	m³	1.20	0.80	1.00	1.35	1.55
Weight	kg	–	820	890	–	–
Weight in HD-version	kg	970	–	–	970	1,120



Clamshells

GM 10B, earthmoving shells, for mounting to quick coupler 48

Cutting width	mm	320	400	600	800	1,000
Capacity	m³	0.17	0.22	0.35	0.45	0.60
Weight	kg	770	750	860	910	970



Sorting Grapple

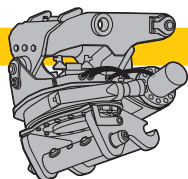
Ribbed

Perforated

Gravel tongs

SG 25, for mounting to quick coupler 48

Cutting width	mm	800	1,000	800	1,000	800
Capacity	m³	0.50	0.65	0.55	0.75	0.55
Weight	kg	1,100	1,180	1,050	1,100	1,240



Tiltrotator

LH-TR 25, for mounting to quick coupler 48

Weight	kg	720
Rotation		360°
Tilt		2 x 50°

Standard Equipment



Undercarriage

Lashing eyelets
Sprocket with dirt ejector
Track guide (one piece per track frame)
Track rollers, lifetime-lubricated
Tracks, sealed and greased



Uppercarriage

Sound insulation
Swing brake lock, maintenance-free



Hydraulics

Filter with integrated fine filter area
Liebherr hydraulic oil
Pressure storage for controlled lowering of equipment with engine turned off
Pressure test ports for hydraulic
Shut-off valve between hydraulic tank and pumps
Work mode selector



Engine

Common-Rail injection system
Conform with stage IIIB emission standard
Cooling fluid level visible from cab
Engine idling, automatic, sensor-controlled
Fuel filter and water separator
Intercooler
Stepless adjustable engine speed
Turbo charger



Operator's Cab

7" colour multifunction display with touchscreen
Air conditioning, automatic
Cigarette lighter and ashtray
Coat hook
Cup holder
Fuel consumption indicator
Headlights (two pieces, Halogen)
Hour meters, readable from outside the cab
Hydraulic suspension
Impact-resistant roof window, right window and windshield with safety glass
Interior light
LiDAT Plus (Liebherr data transfer system)*
Operator seat "Comfort"
Preparation for radio installation
Rain hood over front window opening
Rear view monitoring camera
Rear window emergency exit
Roll-down sun blind
ROPS safety cab structure (ISO 12117-2)
Rubber floor mat
Seat belt
Sliding windows in cab door
Storage bin
Storage space
Tinted windows
Windscreen, totally or partially retractable
Wiper/washer



Attachment

Headlight on boom (right, Halogen)
Liebherr central lubrication system, fully-automatic (except connecting link for bucket kinematics)

* optionally extendable after one year

Individual Options



Undercarriage

- Chain kit, reinforced (D 6 C)
- Cover and base protection plates
- Steps, wide version
- Storage box
- Track guides (three pieces per track frame)
- Track pads, angled or chamfered
- Track pads, rubber version



Uppercarriage

- Additional right-hand rearview mirror
- Additional headlights on uppercarriage (Halogen or LED) with protection
- Camera for side area monitoring
- Customized colors
- Diesel refuelling pump (electric)
- Electric socket for external start-up aid
- Fan drive, reversible
- Fine filter protection grid for radiator
- Fuel anti-theft device
- Fuel tank cap lockable with padlock
- Tool kit, extended version
- Wiggins quick-coupling for fuel



Hydraulics

- Hydraulic bypass fine filter
- Liebherr hydraulic oil, adapted for extreme climate conditions
- Liebherr hydraulic oil, biodegradable
- Preheating for hydraulic oil



Engine

- Air pre-filter with dust trap
- Automatic engine shut-down on idle (adjustable)
- Engine shut-down self-timer
- Liebherr particle filter
- Preheating for fuel, coolant and engine oil
- Wiggins quick coupling for engine oil



Operator's Cab

- Additional front and/or rear cab headlights (Halogen or LED)
- Amber beacon
- Auxiliary heater (programmable)
- Electric cool box (12 V)
- Electronic immobilizer
- Emergency stop button in cab
- Falling objects protection structure (FOPS)
- Fire extinguisher
- First-aid kit

- Footrest
- Four-point harness
- Front guard protection structure (FGPS)
- Front headlights (two pieces, LED)
- Handrest for joysticks
- Impact-resistant front window (one piece, non removable)
- Impact-resistant front window (two pieces, non removable)
- Liebherr proportional control
- Operator seat "Premium"
- Radio "Comfort"
- Roof window wiper
- Sun visor
- Sunshield on cab roof
- Switchable high-pressure control
- Travel alarm

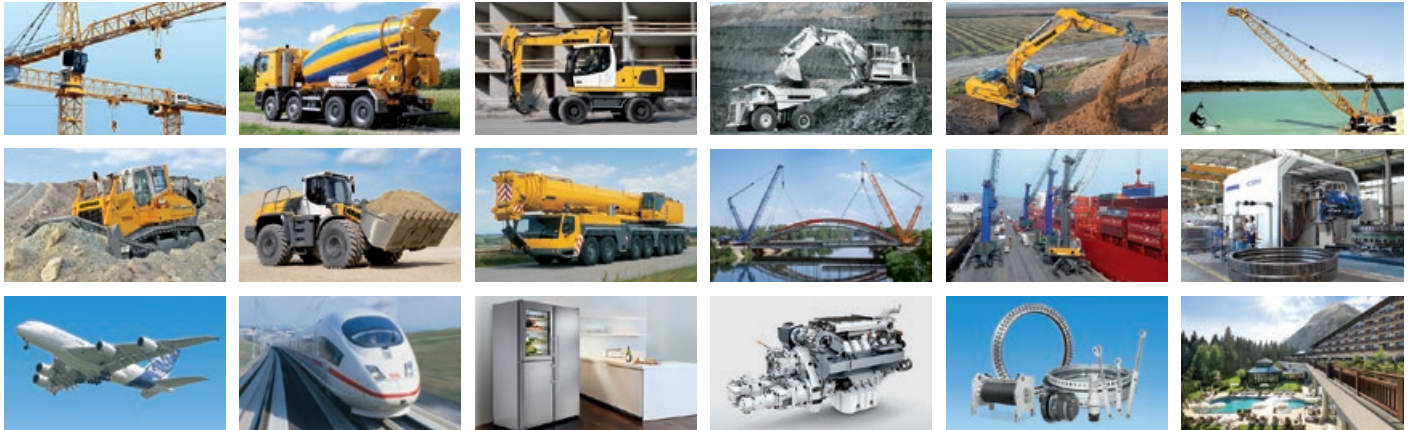


Attachment

- Additional headlight on boom (left, Halogen or LED)
- Automatic lubrication system for connecting link
- Bottom protection for stick
- Cylinders check valve
- Double-side middle-pressure couplings on stick
- Eyelet on boom or stick
- Filter for hydraulic hammer return flow
- Headlight on boom (right, LED)
- Headlights protection
- High pressure circuit
- Hoist cylinder stroke limitation, adjustable
- Hoist cylinders float position
- Hydraulic circuit for grapple
- Hydraulic or mechanical quick coupler
- Leak return line for tools
- Liebherr bucket range
- Liebherr tooth system
- LIKUFIX (quick-coupling system for hydraulic tools)
- Load valve for bucket cylinder
- Lubricant hoses protection on stick
- Middle pressure circuit
- Offset mono boom
- Overload warning device
- Piston rod protection for adjustable cylinder
- Piston rod protection for bucket cylinder
- Piston rod protection for stick cylinder
- Protection for quick change-couplings, sideways on stick
- Safety check valves for hoist cylinder
- Safety check valves for stick cylinder
- Stick cylinder stroke limitation, adjustable
- Sticks, sealed version
- Straight mono boom
- Tool Control, 10 tool adjustments selectable via display
- Tool Management, automatic tool recognition (in combination with LIKUFIX)
- Two-piece boom

Options and/or special attachments, supplied by vendors other than Liebherr, are only to be installed with the knowledge and approval of Liebherr in order to retain warranty.

The Liebherr Group of Companies



Wide Product Range

The Liebherr Group is one of the largest construction equipment manufacturers in the world. Liebherr's high-value products and services enjoy a high reputation in many other fields. The wide range includes domestic appliances, aerospace and transportation systems, machine tools and maritime cranes.

Exceptional Customer Benefit

Every product line provides a complete range of models in many different versions. With both their technical excellence and acknowledged quality, Liebherr products offer a maximum of customer benefits in practical application.

State-of-the-art Technology

To provide consistent, top quality products, Liebherr attaches great importance to each product area, its components and core technologies. Important modules and components are developed and manufactured in-house, for instance the entire drive and control technology for construction equipment.

Worldwide and Independent

Hans Liebherr founded the Liebherr family company in 1949. Since that time, the enterprise has steadily grown to a group of more than 130 companies with over 39,000 employees located on all continents. The corporate headquarters of the Group is Liebherr-International AG in Bulle, Switzerland. The Liebherr family is the sole owner of the company.

www.liebherr.com

Liebherr-France SAS

2 avenue Joseph Rey, B.P. 90287, FR-68005 Colmar Cedex

☎ +33 389 21 30 30, Fax +33 389 21 37 93

www.liebherr.com, E-Mail: info.lfr@liebherr.com

www.facebook.com/LiebherrConstruction