

1000

The PROFIT MINER



 **Poclain**

Courtesy of MachineMarket

Engine: 850 HP SAE net

Weight: 190 tons

Shovel bucket capacity: 11 to 22 cu. yd

Digging force (loader): 94.5 tons



Backhoe bucket capacity : 7 to 19 1/2 cu.yd (PCSA)

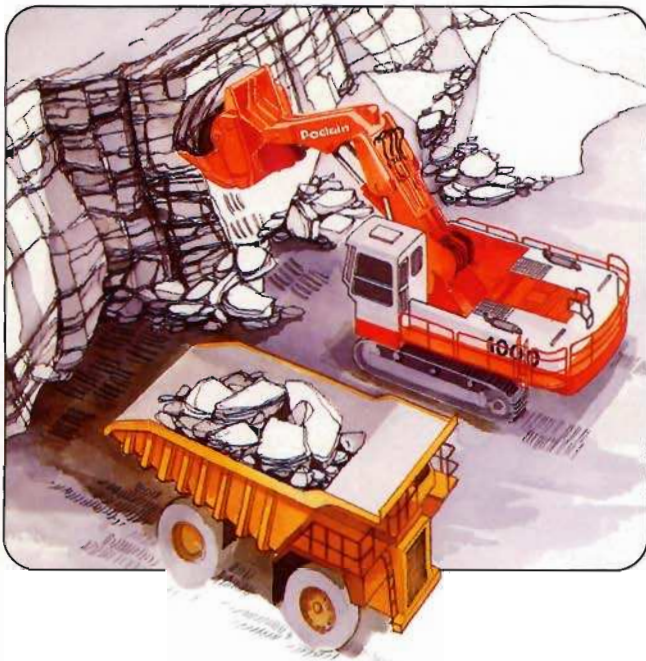
Average annual production : 5 million tons

Dumpers : 85 to 120 tons

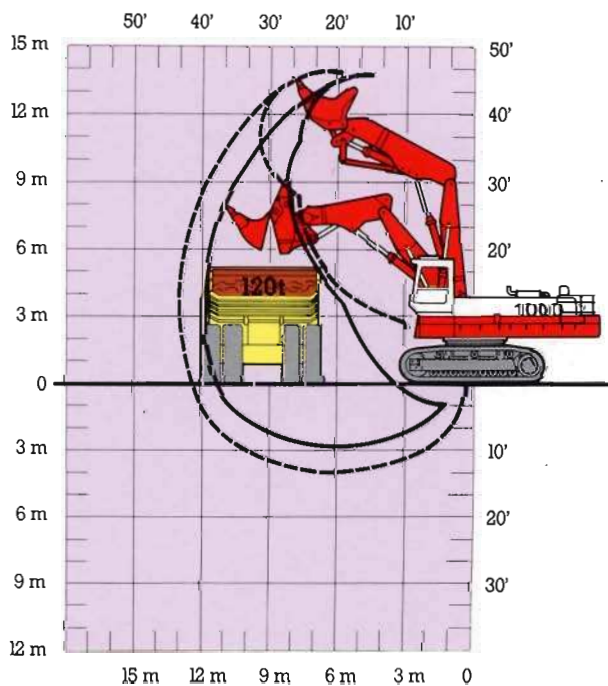
The PROFIT MINER



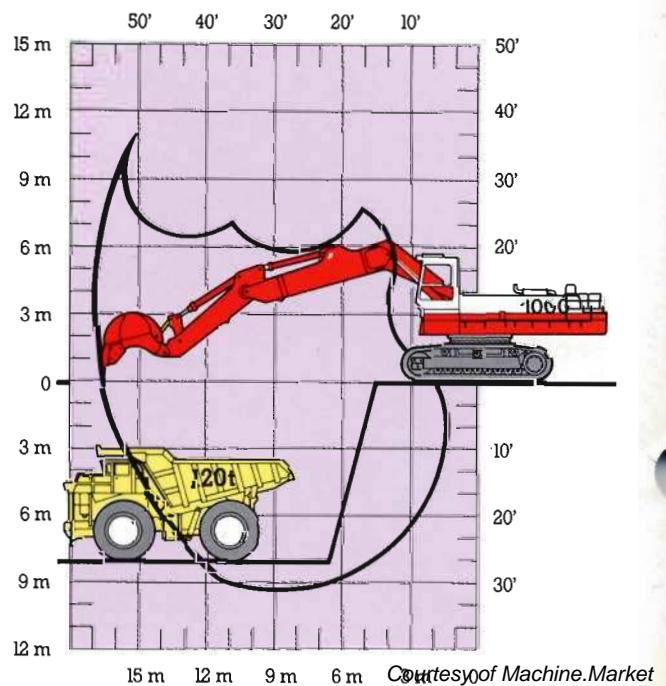
New methods, increased production : the Poclain 1000



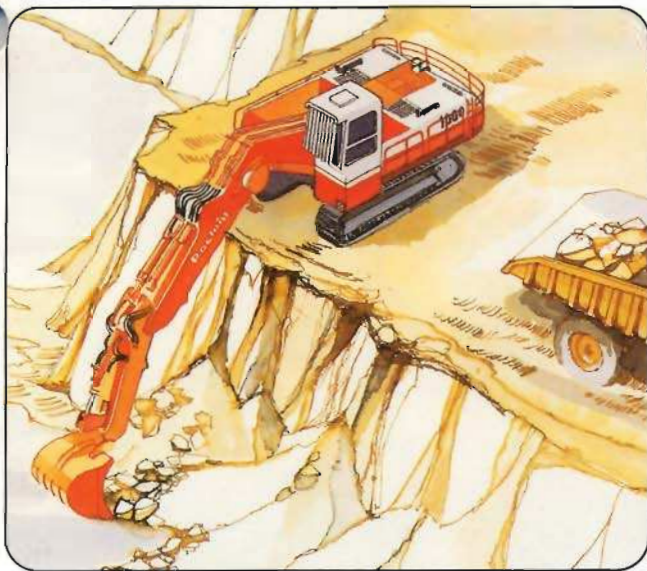
1. The Poclain 1000 at the foot of the face, loading trucks. This is the best application giving the 1000 all the advantages of any other loading equipments: it has the ability to load boulders bigger than the bucket, direct digging without blasting in most cases, cleaning of the work area, ability to select the ore from the overburden, low cycle time and dumping accuracy, the Poclain 1000 is astonishingly stable. In this application two buckets are offered: a bottom-dump bucket for the highest penetration force, the front dump bucket for better visibility of the material as well as an excellent working range. In any case, the 1000 is a self-sufficient machine, which eliminates the use of support equipments such as bulldozers.



2. The Poclain 1000 with backhoe attachment, dumpers positioned at the lower level. The best position to extract materials difficult to work at the foot of the face. It's the position which allows the most selective digging. The narrow bucket gives you the best penetration force and the shortest cycle time resulting in a production equal or even higher than the shovel attachment.

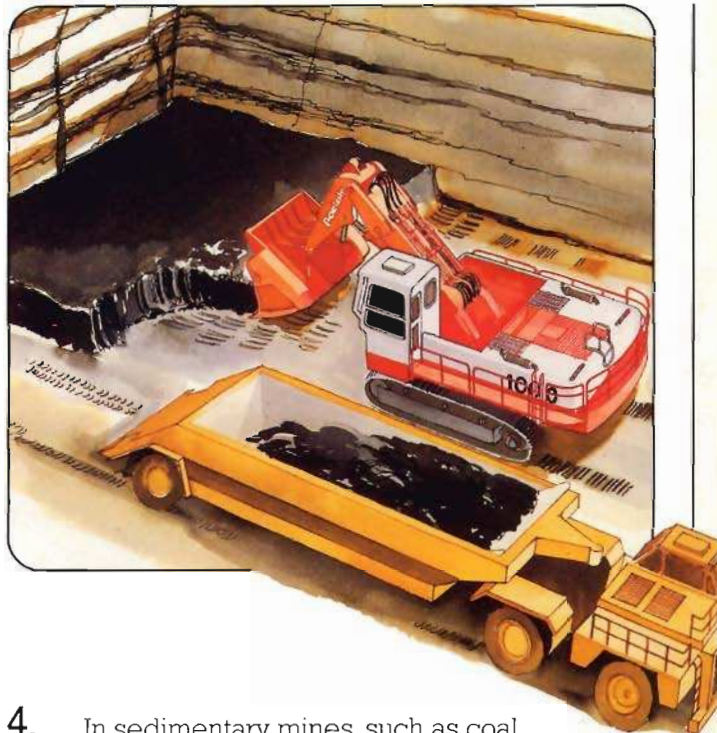
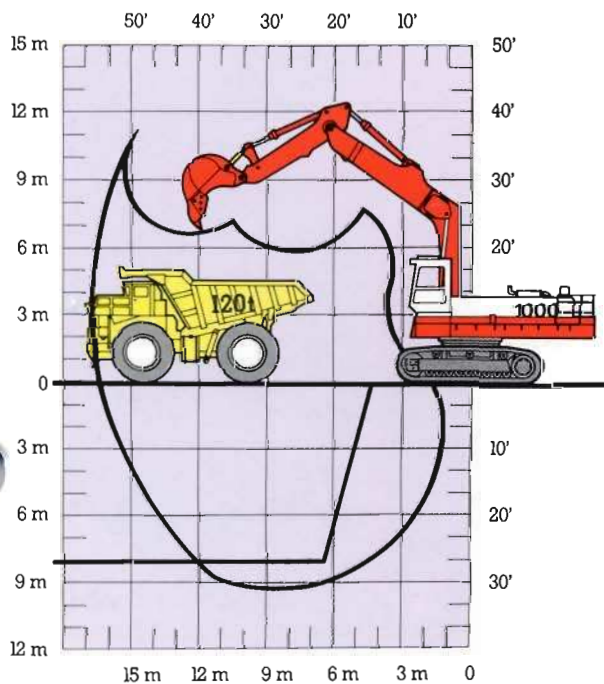


The PROFIT MINER



3. The Poclain 1000 with backhoe attachment on top of the bench with the truck at the same level.

This application allows you to keep the job going when the weather conditions would normally prevent the trucks circulating on the lower level, due to water or mud. Even though the cycle time being longer, you keep your production going.

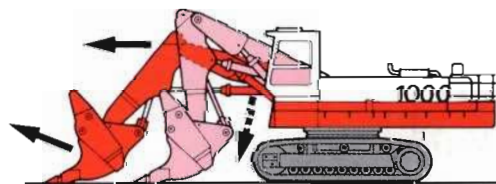


4. In sedimentary mines, such as coal, you can follow very precisely the seam of coal. The high penetration force of the 1000 allows you to dig without blasting or ripping, you avoid pulverizing the coal, which means less fines and higher production of finished product.

THE "FLOATING BOOM DEVICE":

A. Poclain system designed to increase your production

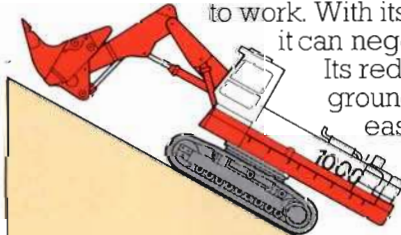
When selected, the bucket automatically follows the ground profile. By eliminating attachment induced shocks, the floating boom concept results in a more effective use of the penetration forces, allowing better and faster bucket fills, easier cleaning of the work area and unequalled comfort to the operator.



KEEP ON MOVING

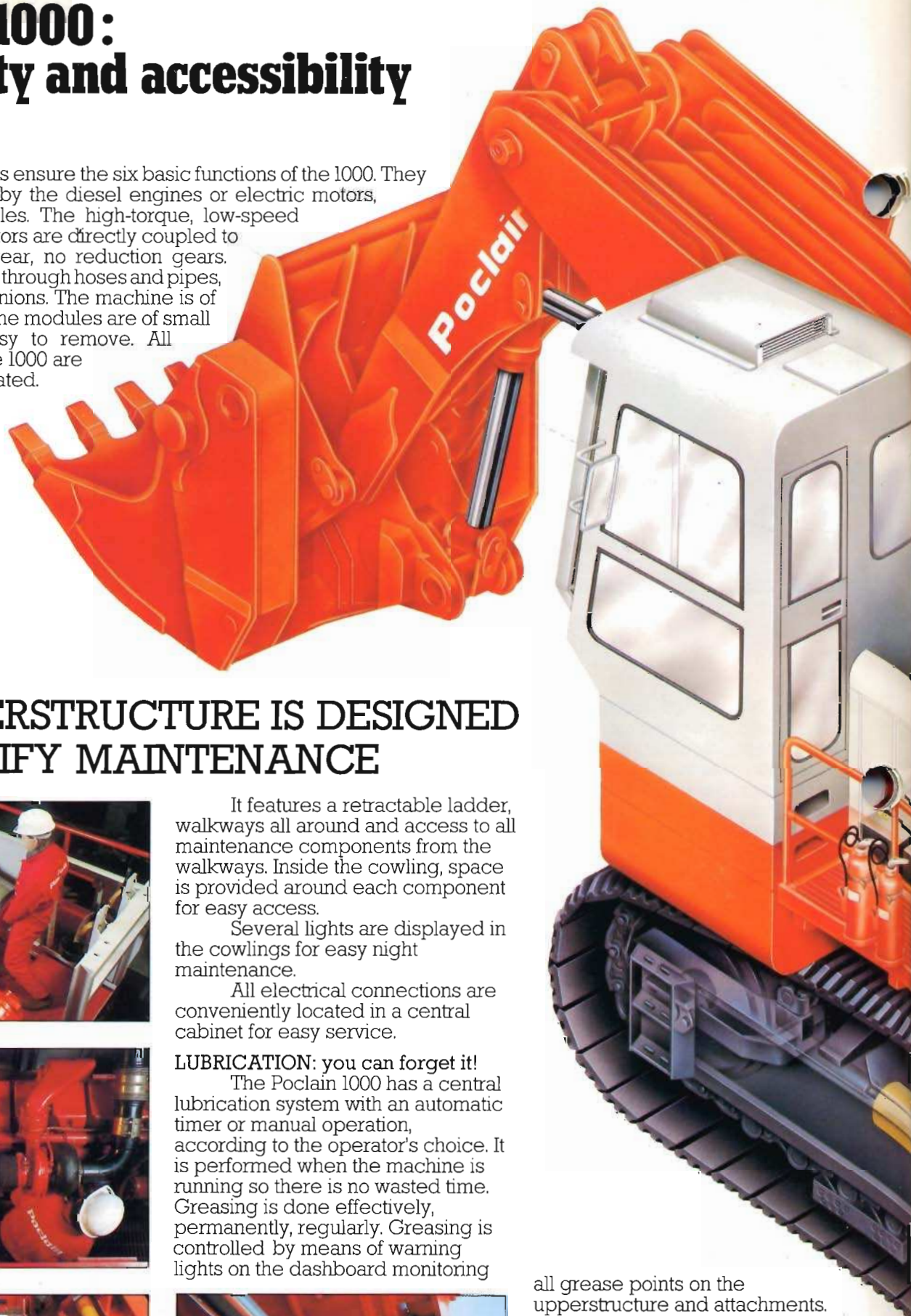
The 1000 is a fast mover, immediately ready to work. With its high drawbar-pull, it can negotiate slopes up to 60%.

Its reduced size and low ground pressure makes it easy to move on narrow benches or poor ground condition sites.



Poclain 1000: simplicity and accessibility

Just two pumps ensure the six basic functions of the 1000. They are directly driven by the diesel engines or electric motors, no clutches or cables. The high-torque, low-speed hydraulic swing motors are directly coupled to the external ring gear, no reduction gears. Power is transmitted through hoses and pipes, no cables and no pinions. The machine is of a modular design. The modules are of small size, each one easy to remove. All grease points on the 1000 are automatically lubricated.



THE UPPERSTRUCTURE IS DESIGNED TO SIMPLIFY MAINTENANCE



It features a retractable ladder, walkways all around and access to all maintenance components from the walkways. Inside the cowlings, space is provided around each component for easy access.

Several lights are displayed in the cowlings for easy night maintenance.

All electrical connections are conveniently located in a central cabinet for easy service.



LUBRICATION: you can forget it!

The Poclain 1000 has a central lubrication system with an automatic timer or manual operation, according to the operator's choice. It is performed when the machine is running so there is no wasted time. Greasing is done effectively, permanently, regularly. Greasing is controlled by means of warning lights on the dashboard monitoring



all grease points on the upperstructure and attachments. Replacement of the grease drum is easy to handle with the Poclain 1000 winch. This central lube system will not forget a greasing point.

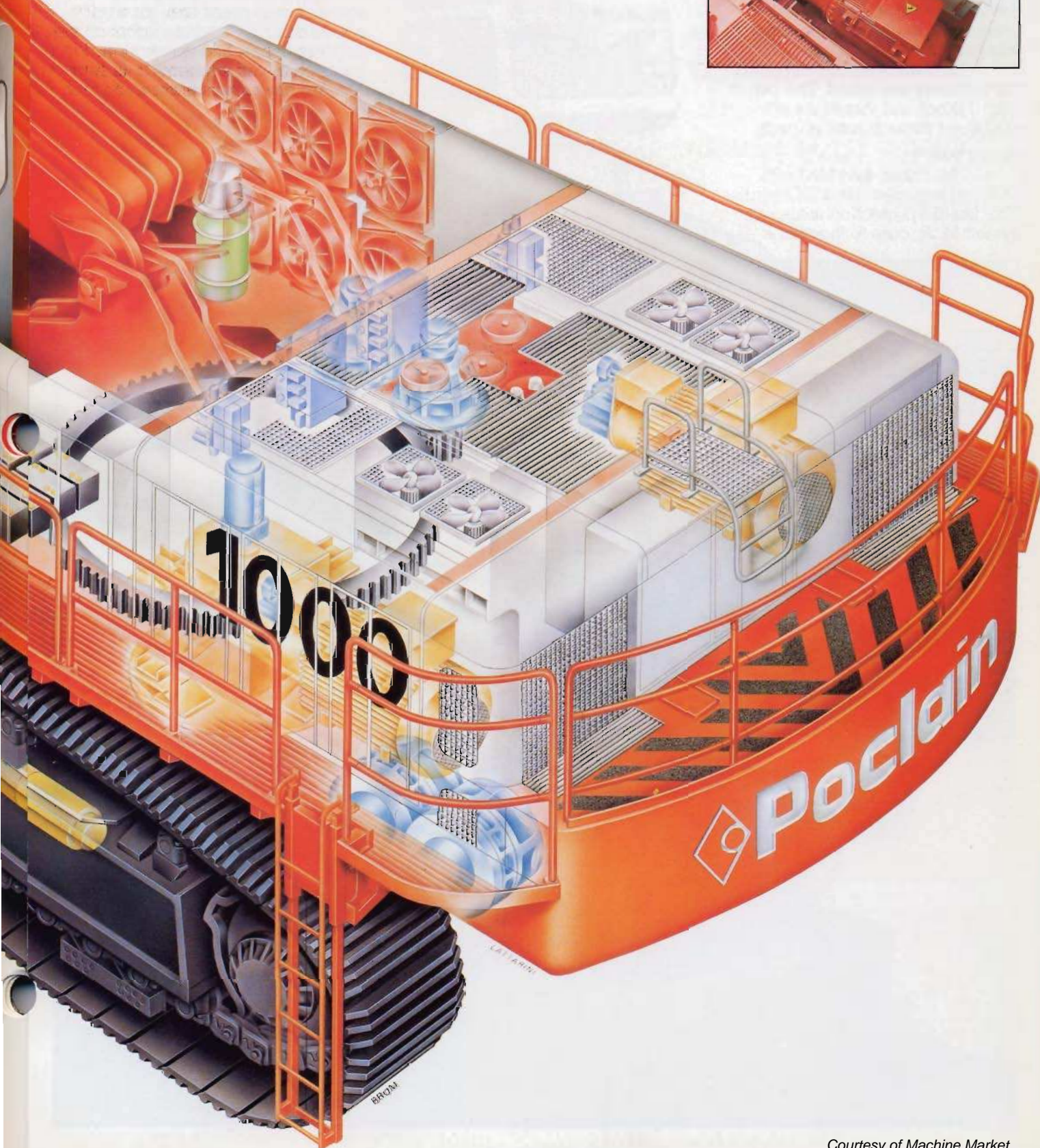
THE CYLINDERS: Protected and powerful

All cylinders are corrosion proof. Cylinder heads are bolted and protected against impact of falling material.

1000 electric

The PROFIT MINER

The Poclain 1000 Electric is powered through a cable connector located on the undercarriage. Power is transmitted to the upperstructure through an electric swivel. Any operating voltage is available to suit your requirements. All components are waterproof and dust-proof. The 1000 Electric has all the maintenance advantages of electrically powered equipment.



1000 diesel

The 1000 is fitted with 2 water-cooled Cummins diesel engines. Easy to reach, service and remove, they rest on two independent cradles. The power module (engine + pump) can be removed in a short time. Poclain wants you to save time. The 1000 offers a quick refueling system. The tank capacity is sized for 22 hours of operation without refueling.



Poclain means comfort and productivity

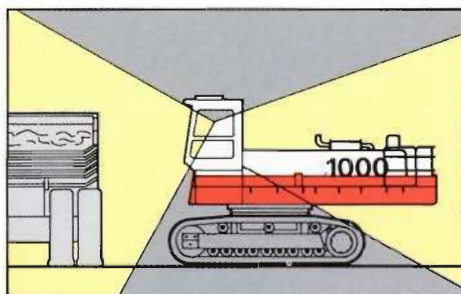
The PROFIT MINER

Our cab on the Poclain 1000 is the result of elaborate human factor studies. It provides comfort, ease of operation and a safe environment for the operator. The cab is fitted with two seats. All safety and operation controls are combined in a single dashboard with monitoring devices for temperatures, pressures, levels and emergency stop button.

The cab is air conditioned, the windows are tinted. The cab is sound-proof and vibrations are absorbed through rubber pads.

Protection

The cab is standard with FOPS system matching ISO norms. Windshield protection is also available. Access to the cab is



through a rear door from the upperstructure walk way.

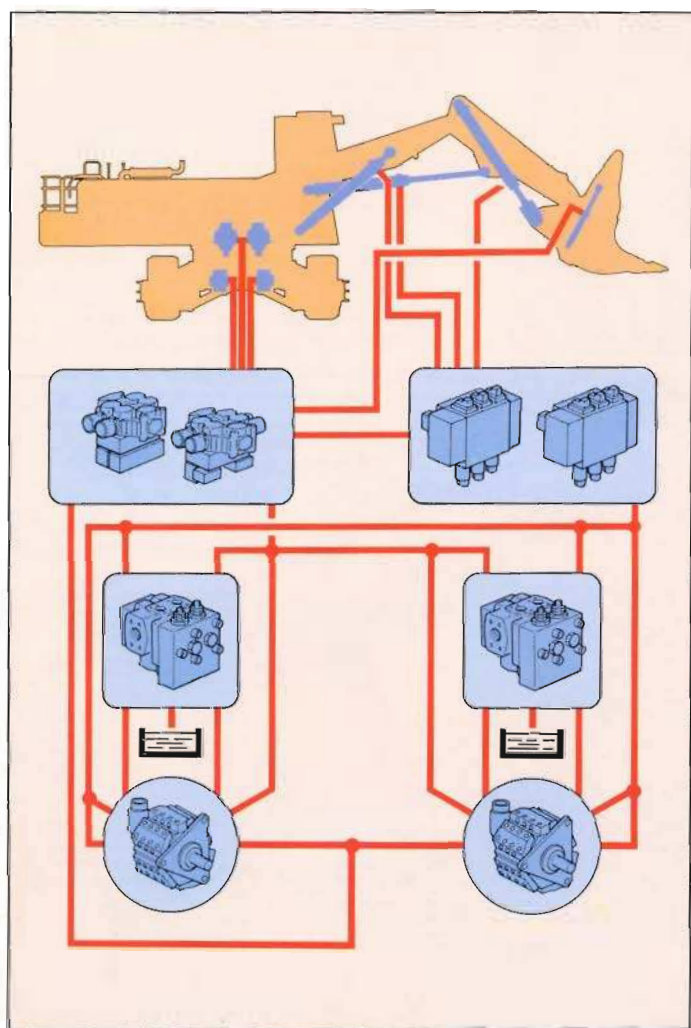
Visibility: one of the main features of the Poclain 1000.

At work the operator's eye-level is 4.80 meters (15'9") above the

ground resulting in good visibility when loading into 120 ton trucks. Furthermore, its height can be increased to 5.40 m (17'9"). In addition the cab offers excellent rear vision. The front lower window is not tinted so that the aspect of the material is not altered. Special attention was given to night work conditions: four working lights on the upperstructure and two working lights on the attachments supply light for any type of night work.

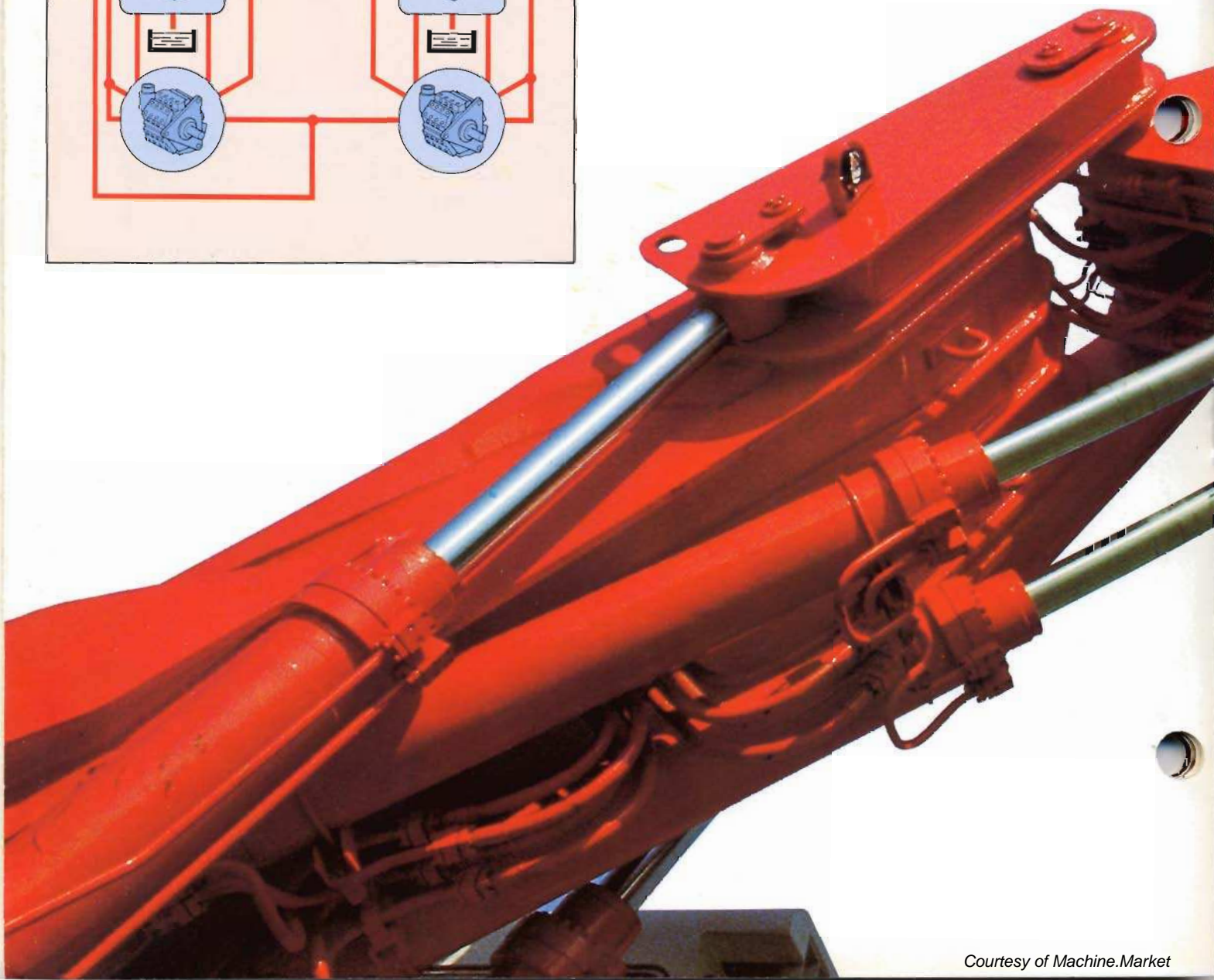


The hydraulic system of the 1000: maximum use of power



The secret of the high productivity of the Poclain 1000 is the Variodyn System.

The Poclain idea is this: optimum and continuous use of hydraulic power where and when it is demanded. Thanks to high pressure, variation of flows and use of components with unequalled efficiency, there is not energy waste. The result is faster work, increased precision, more power and maximum adaptation to all mining conditions. The Variodyn system combines speed, simultaneity and coordination of attachments and swing functions with great precision in the repetition of different actions: penetration, loading, lifting, discharging. In addition all power can be utilized for travel when required.



The PROFIT MINER

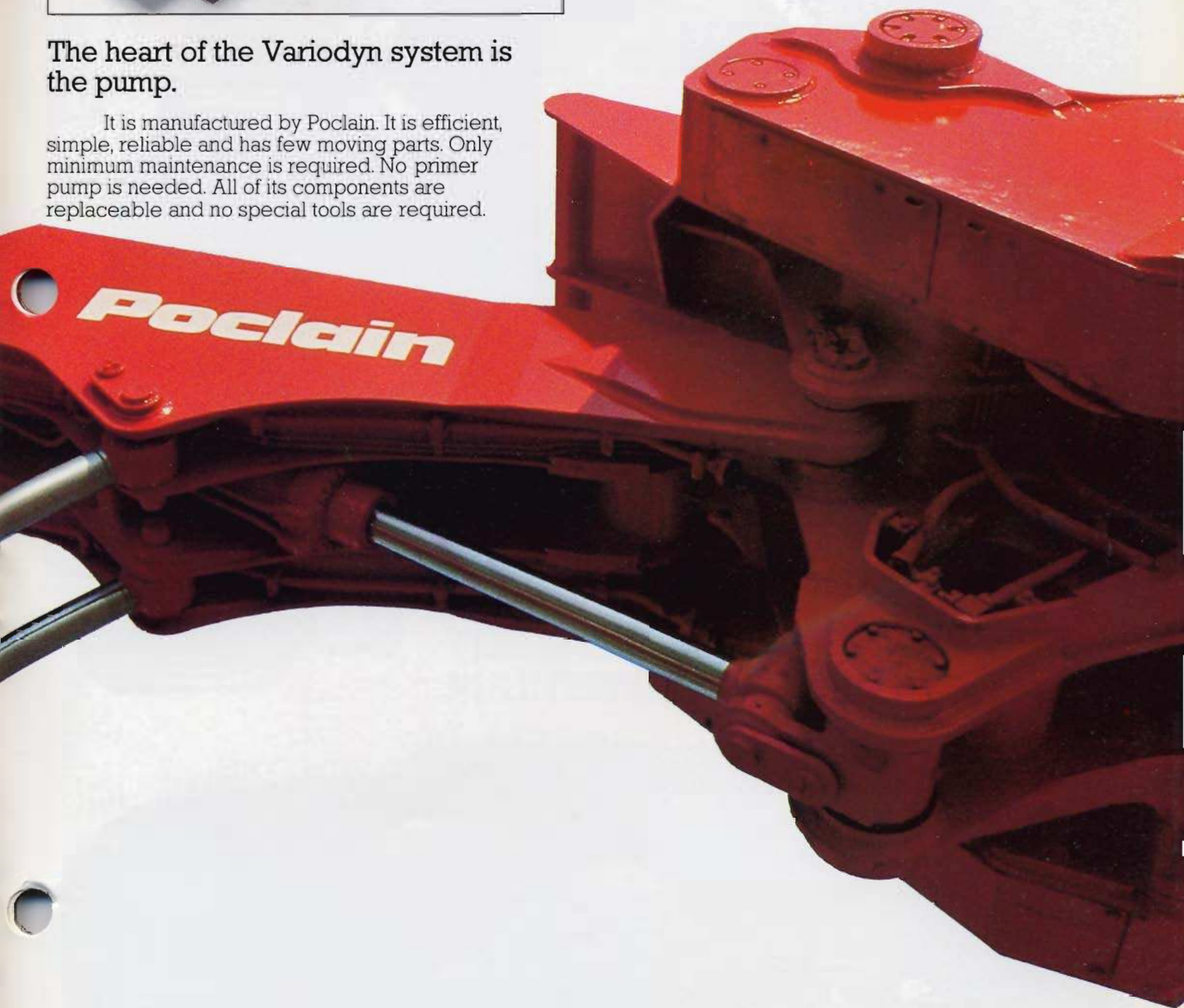


This pump has a mechanical efficiency of 95 % and a volumetric efficiency of 97 % at operating pressure.

Another advantage of the circuit is the minimum fuel consumption resulting from efficient energy conversion. For example, fuel consumption at 850 hp is 2 x 5l liters (2 x 13.5 US gals) per hour.

The heart of the Variodyn system is the pump.

It is manufactured by Poclain. It is efficient, simple, reliable and has few moving parts. Only minimum maintenance is required. No primer pump is needed. All of its components are replaceable and no special tools are required.



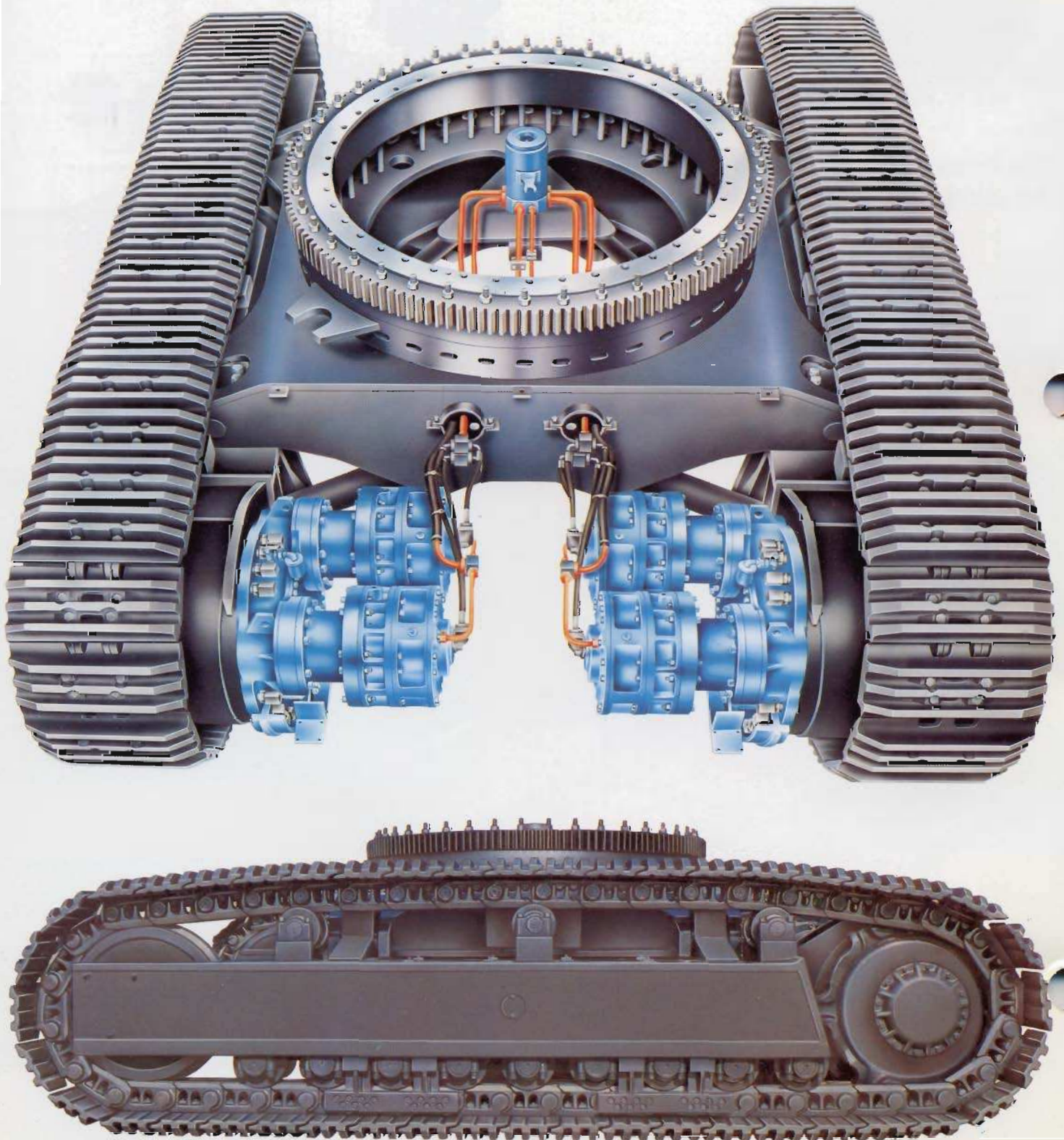
The Poclain 1000 undercarriage: strength + stability

The PROFIT MINER

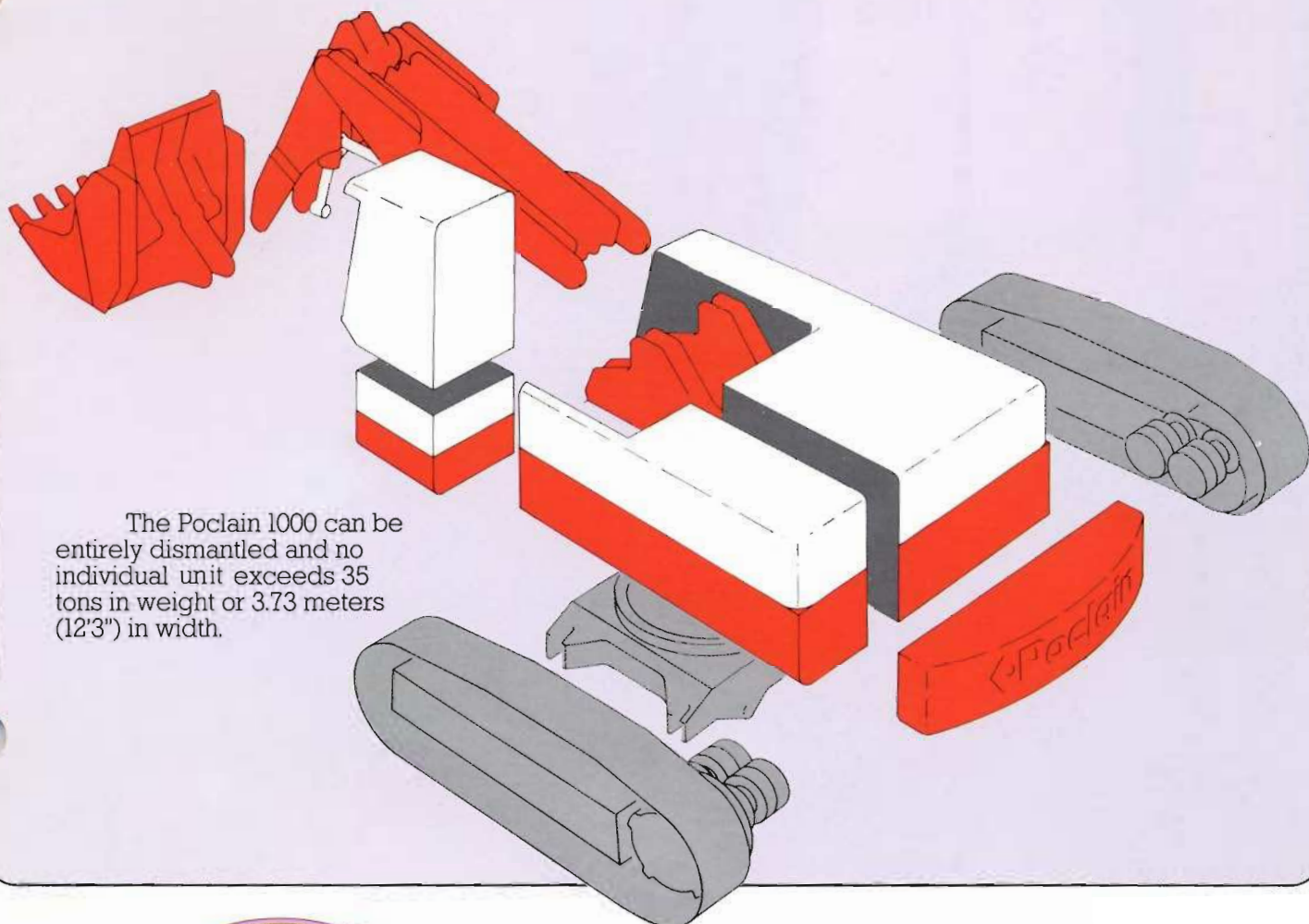
The undercarriage is heavy, massive. It has undergone stress-relieving treatment, eliminating residual and internal stresses. Its H-shaped structure consists of a central frame and dismountable track beams. The swing gear contains three rows of rollers. The undercarriage is of the tractor type with track-guides. You have a choice

between three different pad widths to adjust ground pressure to the terrain.

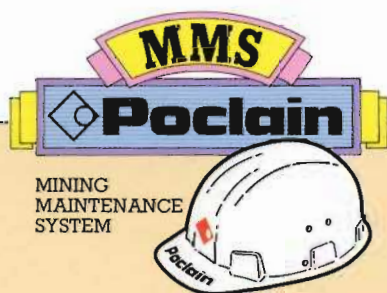
No maintenance on the undercarriage. The rollers are life lubricated and the track tension is set by a grease cylinder. Elastomere cylinders absorb the shocks on the tracks.



The Poclain 1000 can be transported anywhere: no more inaccessible sites



The Poclain 1000 can be entirely dismantled and no individual unit exceeds 35 tons in weight or 3.73 meters (12'3") in width.



30,000 HOURS OF OPERATION: THE "MINING MAINTENANCE SYSTEM".

Poclain has adopted the "replace to repair" system. The modularity of the 1000's design makes maintenance a game. No more long downtimes for general overhaul. Only a few hours are required to replace any component. Your production will not stop.

The PROFIT MINER

Courtesy of Machine Market

A close-up, high-contrast photograph of a red Poclair hydraulic excavator's arm and bucket. The arm is positioned diagonally across the frame, with the bucket at the bottom left. The Poclair logo is printed vertically in white on the side of the arm. The background is dark, making the red machinery stand out.

 **Poclair**
hydraulic excavators

60330 LE PLESSIS-BELLEVILLE
FRANCE

R.C. Senlis 695480 244 B
SIRET 695480 244 - 00018
Référence PR 1000 - 101 - Printed in France