

Zaxis200LC

# HITACHI

# ZAXIS

# 200LC

**Rated Engine**  
147 hp (108 kW)

**Operating Weight**  
45,400 lbs (20 600 kg)

**Bucket Capacity**  
0.59 - 1.60 yd<sup>3</sup> (0.45 - 1.22 m<sup>3</sup>)



# One **POWERFUL** Solution

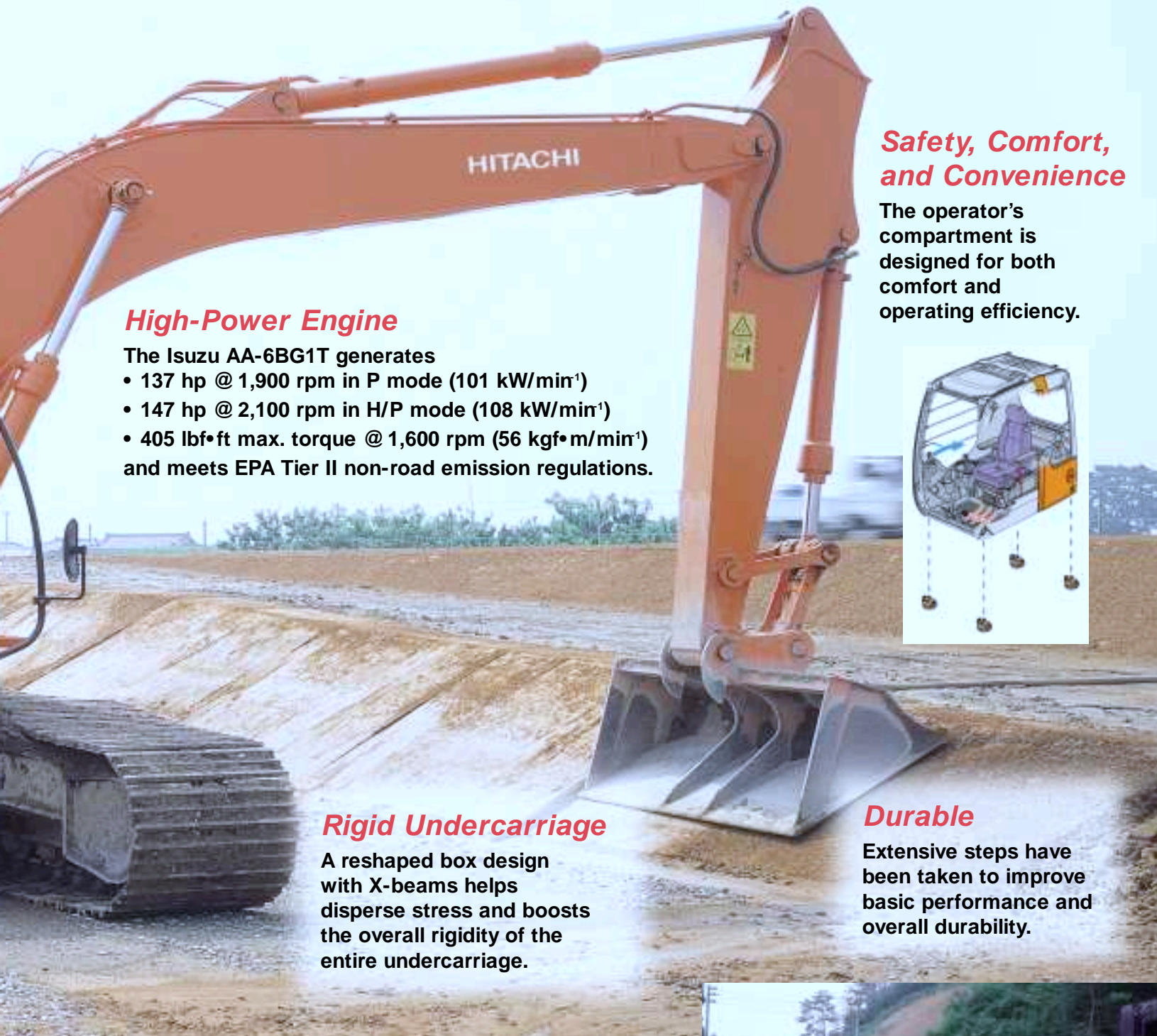


## ***Machine Information Center***

The Machine Information Center captures and stores vital machine performance data such as engine speeds, hydraulic temperatures, pump pressures, alarms and faults, hours of operation, and more. The data is downloadable through a Palm Pilot and is transferred to your PC. Special PC software interprets the data and generates valuable machine performance reports and graphs highlighting machine utilization, performance history and more to help users improve productivity and profit.

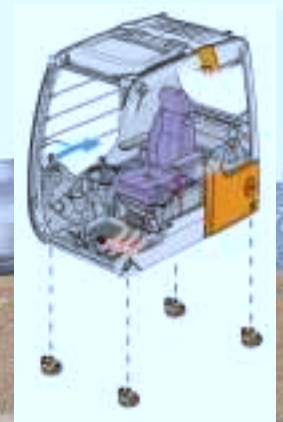
*Courtesy of Machine.Market*

**Smarter, faster, more productive yet more efficient—the versatile Hitachi Zaxis 200LC can be found at construction sites all over the world. Boasting a cleaner yet more powerful engine and a host of new items as well as significant refinements, Zaxis is the next generation in excavator development.**



### **Safety, Comfort, and Convenience**

The operator's compartment is designed for both comfort and operating efficiency.



### **High-Power Engine**

The Isuzu AA-6BG1T generates

- 137 hp @ 1,900 rpm in P mode (101 kW/min<sup>1</sup>)
- 147 hp @ 2,100 rpm in H/P mode (108 kW/min<sup>1</sup>)
- 405 lbf•ft max. torque @ 1,600 rpm (56 kgf•m/min<sup>1</sup>) and meets EPA Tier II non-road emission regulations.

### **Rigid Undercarriage**

A reshaped box design with X-beams helps disperse stress and boosts the overall rigidity of the entire undercarriage.

### **Durable**

Extensive steps have been taken to improve basic performance and overall durability.

### **Multi-function Operations**

The Zaxis 200LC continues the Hitachi tradition of smooth, multi-functioning excavators. Executing combined operations such as simultaneous swinging and traveling are easy with Zaxis.



# THE ZAXIS ADVANTAGE

## Higher Productivity

Zaxis uses the latest technologies to achieve lower total operational costs while boosting productivity. Arm digging and bucket digging forces have been increased by 10% and 12% respectively by increasing the hydraulic cylinder diameter.

## Cab Comfort

The easy-to-read monitor panel and switches are located near the operator to minimize fatigue and enhance operator control. The Auto-control air conditioner allows you to set a specific temperature, then forget it. Bi-level air ducts are positioned throughout the cab to promote even air flow. The comfortable seat now reclines up to 40 degrees and has wider armrests. Noise level inside the cabin at the operator's ears is a quiet 67 dB.



## Auto Power Lift

Loads are increased during bucket-filling operations. The Auto Power Lift function automatically provides a 6% increase in power to meet the demand.

## Lower Operating Costs

Reduced fuel consumption, a strengthened main frame, front attachment, and undercarriage, longer lubrication intervals, 4,000-hour hydraulic oil and 1000-hour hydraulic oil filters all work together to extend the durability of Zaxis while reducing running and repair costs.

## Work Modes

Two modes simplify excavating operations. Select the "Digging" mode for smooth and speedy front operations or "Attachment" to use a wide variety of tools such as breakers, compactors, and crushers.



The powerful engine and hydraulic system work together to bring the maximum amount of excavating forces to the toughest of job sites.

## Cab Safety

The CRES (Center pillar Reinforced Structure) rigid cab is designed with safety in mind. The closed-section pillar and reinforcing members at central areas withstand vertical and horizontal external forces. This can help reduce the potential of operator injury in the event of an accident.

## Operator Command

The newly refined hydraulic system gives the operator unprecedented control. Lever control force is reduced by 10%. The bucket regenerative mechanism makes light-duty operation quicker. The lever height is adjustable within a range of 1.58" (40 mm).

## Increased Travel and Swing Power

Armed with plenty of dependable power for travel and swing operations, the Zaxis 200LC is ready for the toughest of terrains and job sites thanks to improved travel motors and swing reduction gear. It has 11% more swing torque and 8% more travel power than the EX200LC.

## Auto Acceleration and Auto Idle

Engine speed is automatically controlled in response to the amount of lever operation. This helps reduce fuel consumption, especially during light-load work, up to 10%. The Auto Idle Control reduces the engine speed automatically to save energy when the lever is in neutral.

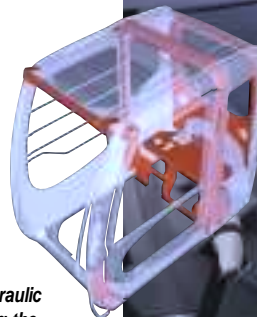


A low-noise muffler and the Isuzu Tier II emissions control engine ensure a quieter, more environmentally friendly excavator. Plastic parts are labeled for easy recycling. Wiring is lead-free.

Easy-to-read monitor panel.



Cab design both guards the operator and contributes to efficient operation through its comfortable, ergonomic layout and its CRES design.



## ENGINE

Model .....Isuzu AA-6BG1T  
 Type .....4-cycle water-cooled, direct injection  
 Aspiration .....Turbocharged, intercooled  
 No. of cylinders .....6  
 Rated power SAE J1349, net  
   H/P mode .....147 hp (108 kW) @ 2,100 rpm (min<sup>-1</sup>)  
   P mode .....137 hp (101 kW) @ 1,900 rpm (min<sup>-1</sup>)  
 Maximum torque .....405 lbf•ft (56 kgf•m) @ 1,600 rpm (min<sup>-1</sup>)  
 Piston Displacement .....396 in<sup>3</sup> (6.494 L)  
 Bore and stroke .....4.13" x 4.92" (105 mm x 125 mm)  
 Batteries .....2 x 12 V, 97 AH  
 Governor .....Mechanical speed control by stepping motor

## HYDRAULIC SYSTEM

Work mode selector allows operator to choose between Digging mode or Attachment mode.  
 Engine speed sensing system.  
 Main pumps .....2 variable displacement axial piston pumps  
 Max. oil flow .....2 x 51.3 US gpm (2 x 194 L/min, 2 x 42.7 Imp gpm)  
 Pilot pump .....1 gear pump  
 Max. oil flow .....8.5 US gpm (32 L/min, 7.0 Imp gpm)

### Hydraulic Motors

Travel .....2 variable displacement axial piston motors  
 Swing .....1 axial piston motor

### Relief Valve Settings

Implement circuit .....4,980 psi (350 kgf/cm<sup>2</sup>)  
 Swing circuit .....4,410 psi (310 kgf/cm<sup>2</sup>)  
 Travel circuit .....4,980 psi (350 kgf/cm<sup>2</sup>)  
 Pilot circuit .....570 psi (40 kgf/cm<sup>2</sup>)  
 Power boost .....5,260 psi (370 kgf/cm<sup>2</sup>)

### Hydraulic Cylinders

High-strength piston rod and tubes. Cylinder cushion mechanisms provided in all cylinders to absorb shocks at stroke ends.

### Dimensions:

	Qty.	Bore	Rod Diameter
Boom	2	4.72" (120 mm)	3.35" (85 mm)
Arm	1	5.31" (135 mm)	3.74" (95 mm)
Bucket	1	4.53" (115 mm)	3.15" (80 mm)

### Hydraulic Filters

Hydraulic circuits use high-quality hydraulic filters. A suction filter is incorporated in the suction line and full-flow filters in the return line and swing/travel motor drain lines.

## UPPERSTRUCTURE

### Revolving Frame

Welded, sturdy box construction, using heavy-gauge steel plates for ruggedness. D-section frame for resistance to deformation.

### Swing Mechanism

Axial piston motor with planetary reduction gear is bathed in oil. Swing circle is single-row, shear-type ball bearing with induction-hardened internal gear. Internal gear and pinion gear are immersed in lubricant. Swing parking brake is spring-set/hydraulic-released disc type.

Swing speed .....13.3 rpm (min<sup>-1</sup>)  
 Swing torque .....43,218 lb•ft (5 981 kgf•m)

### Operator's Cab

Independent roomy cab, 40" (1 005 mm) wide by 66" (1 675 mm) high, conforming to ISO Standards. Reinforced glass windows on 4 sides for visibility. Front windows (upper and lower) can be opened. Adjustable, reclining seat with armrests; movable with or without control levers.

## CONTROLS

Pilot controls for all functions. Hitachi's original shockless valve and quick warm-up system built in the pilot circuit. Hydraulic warm-up control system for engine and hydraulic oil.

Implement levers .....2  
 Travel levers with pedals .....2

## UNDERCARRIAGE

### Tracks

Tractor-type undercarriage. Welded track frame using selected materials. Side frame welded to track frame. Lubricated track rollers, idlers, and sprockets with floating seals. Track shoes with triple grousers made of induction-hardened rolled alloy. Heat-treated connecting pins with dirt seals. Hydraulic (grease) track adjusters with shock-absorbing recoil springs.

### Number of Rollers and Shoes on Each Side, standard N.A. model

Upper rollers .....2  
 Lower rollers .....8  
 Track shoes .....49  
 Track guard .....2

### Traction Device

Each track driven by 2-speed axial piston motor through planetary reduction gears for counter-rotation of the tracks. Sprockets are replaceable. Parking brake is spring-set/hydraulic-released disc type. Travel shockless relief valve built in travel motor absorbs shocks when stopping travel.

Travel speeds High: .....0-3.4 mph (5.5 km/h)  
 Low: .....0-2.2 mph (3.6 km/h)  
 Maximum traction force .....42,420 lbf (19 240 kgf)  
 Gradeability .....35° (70%) continuous

## SERVICE REFILL CAPACITIES

	US gal	Liters	Imp gal
Fuel tank	95.1	360.0	79.2
Engine coolant	6.1	23.0	5.1
Engine oil	6.6	25.0	5.5
Swing mechanism (each side)	1.6	6.2	1.4
Travel final device (each side)	1.8	6.8	1.5
Hydraulic system	52.8	200.0	44.0
Hydraulic tank	35.7	135.0	29.7

## WEIGHTS/GROUND PRESSURE

Standard North America backhoe model Zaxis 200LC:

18' 8" (5.68 m) boom, 9' 7" (2.91 m) arm, 1.05 yd<sup>3</sup> (0.80 m<sup>3</sup>)

PCSA heaped bucket, 31" (800 mm) triple grouser shoes.

Weight: .....45,400 lb (20 600 kg)

Ground pressure: .....4.69 psi (0.33 kgf/cm<sup>2</sup>)

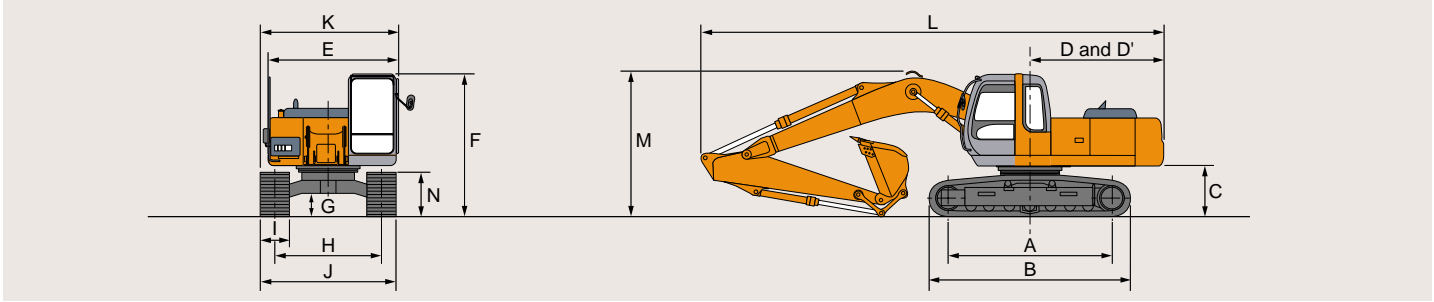
Other models available include 24" (600 mm) and 28" (700 mm) triple grouser shoes. Please check with your local Hitachi dealer for more details

## BACKHOE ATTACHMENTS

Boom and arms of all-welded, box-section design. 18'8" (5.68 m) boom, 7'3" (2.22 m) and 9'7" (2.91 m) arms are available.

# DIMENSIONS / WORKING RANGES

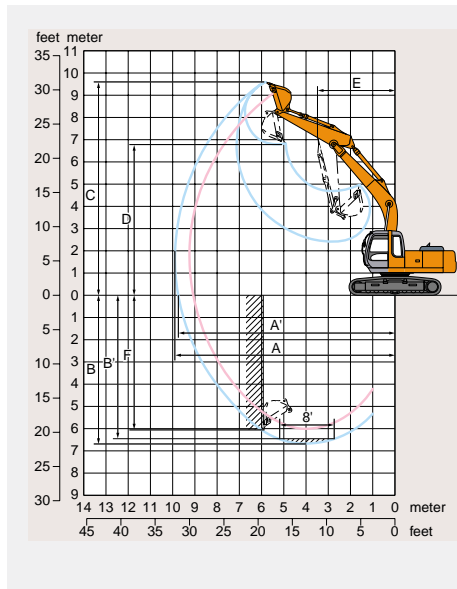
## ZAXIS200LC



Unit: ft in (mm)

	ZAXIS200LC
A Distance between tumbler	12'0" (3 660)
B Undercarriage length	14'8" (4 460)
C Counterweight clearance	3'5" (1 030)
D Rear-end swing radius	9'0" (2 750)
D' Rear-end length	9'0" (2 750)
E Overall width of upperstructure	8'11" (2 710)
F Overall height of cab	9'8" (2 950)
G Min. ground clearance	1'6" (450)
H Track gauge	7'10" (2 390)
I Track shoe width	31" (G 800)
J Undercarriage width	9'10" (2 990)
K Overall width	9'10" (2 990)
L Overall length	
With 2.22 m (7'3") arm	31'7" (9 620)
With 2.91 m (9'7") arm	31'2" (9 500)
M Overall height of boom	
With 2.22 m (7'3") arm	10'3" (3 130)
With 2.91 m (9'7") arm	9'9" (2 970)
N Track height	
With triple grouser shoes	2'11" (900)

\* Excluding track shoe lug. G: Triple grouser shoe  
 \*\* Equipped with H-front



Unit: ft in (mm)

		ZAXIS200LC	
Arm length		7'3" (2.22 m)	9'7" (2.91 m)
A	Max. digging reach	30'4" (9 250)	32'6" (9 910)
A'	Max. digging reach (on ground)	29'9" (9 080)	32'0" (9 750)
B	Max. digging depth	19'7" (5 980)	21'11" (6 670)
B'	Max. digging depth (8' level)	18'10" (5 740)	21'4" (6 490)
C	Max. cutting height	30'1" (9 170)	31'6" (9 600)
D	Max. dumping height	21'0" (6 390)	22'3" (6 780)
E	Min. swing radius	11'7" (3 530)	11'7" (3 540)
F	Max. vertical wall	16'10" (5 140)	19'10" (6 050)
Bucket digging force*	SAE : PCSA	30 410 lbf (13 200 kgf) 135.3 kN	
Arm crowd force*	SAE : PCSA	29 950 lbf (13 400 kgf) 131 kN	23 250 lbf (10 400 kgf) 103.5 kN

Excluding track shoe lug  
 \* At power boost

# BACKHOE BUCKETS

## ZAXIS200LC

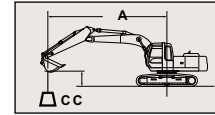
A full line of buckets is offered to meet a wide variety of applications. Digging forces are with power boost. The buckets have an adjustable bushing for side clearance, with the exception of the ditching bucket. Tooth selection includes either the John Deere Fanggs®, Standard, Tiger, Twin Tiger, Abrasion panel, or Flare tooth, or the ESCO (Vertalok) Standard, Tiger, Twin Tiger, or Flare tooth. Replaceable cutting edges are available through John Deere parts. Optional side cutters add 6 inches (150 mm) to bucket widths.

Type Bucket	Bucket Width		Bucket Capacity*		Weight		Bucket Dig Force		Arm Dig Force 9 ft. 9 in. (2.96 m)		Arm Dig Force 11 ft. 10 in. (3.61 m)		Bucket Tip Radius		No. Teeth
	in.	mm	cu. yd.	m <sup>3</sup>	lb.	kg	lb.	kN	lb.	kN	lb.	kN	in.	mm	
General-Purpose Plate Lip	24	610	0.59	0.45	1,106	502	30,410	135.3	29,946	133.2	23,250	103.4	55.5	1410	4
	30	750	0.77	0.59	1,182	536	30,410	135.3	29,946	133.2	23,250	103.4	55.5	1410	4
	36	915	0.95	0.73	1,401	635	30,410	135.3	29,946	133.2	23,250	103.4	55.5	1410	5
	42	1065	1.12	0.86	1,590	721	30,410	135.3	29,946	133.2	23,250	103.4	55.5	1410	5
	48	1220	1.30	0.99	1,673	759	30,410	135.3	29,946	133.2	23,250	103.4	55.5	1410	6
General-Purpose High Capacity	30	750	0.95	0.73	1,391	631	29,348	130.5	29,531	131.4	22,979	102.2	57.5	1461	4
	36	915	1.16	0.89	1,451	658	29,348	130.5	29,531	131.4	22,979	102.2	57.5	1461	5
	42	1065	1.38	1.06	1,596	724	29,348	130.5	29,531	131.4	22,979	102.2	57.5	1461	5
	48	1220	1.60	1.22	1,785	809	29,348	130.5	29,531	131.4	22,979	102.2	57.5	1461	6
Heavy-Duty Plate Lip	24	610	0.59	0.45	1,358	616	30,410	135.3	29,946	133.2	23,250	103.4	55.5	1410	4
	30	750	0.77	0.59	1,447	656	30,410	135.3	29,946	133.2	23,250	103.4	55.5	1410	4
	36	915	0.95	0.73	1,567	711	30,410	135.3	29,946	133.2	23,250	103.4	55.5	1410	5
	42	1065	1.12	0.86	1,676	760	30,410	135.3	29,946	133.2	23,250	103.4	55.5	1410	5
Heavy-Duty High Capacity	24	610	0.73	0.56	1,401	635	29,348	130.5	29,531	131.4	22,979	102.2	57.5	1461	4
	30	750	0.95	0.73	1,528	693	29,348	130.5	29,531	131.4	22,979	102.2	57.5	1461	4
	36	915	1.16	0.89	1,629	739	29,348	130.5	29,531	131.4	22,979	102.2	57.5	1461	5
	42	1065	1.38	1.06	1,701	771	29,348	130.5	29,531	131.4	22,979	102.2	57.5	1461	5
Severe-Duty Cast Lip	24	610	0.59	0.45	1,439	653	30,410	135.3	29,946	133.2	23,250	103.4	55.5	1410	3
	30	750	0.77	0.59	1,551	703	30,410	135.3	29,946	133.2	23,250	103.4	55.5	1410	4
Severe-Duty Plate Lip	36	915	0.95	0.73	1,629	739	30,410	135.3	29,946	133.2	23,250	103.4	55.5	1410	4
	30	750	0.77	0.59	1,760	798	30,410	135.3	29,946	133.2	23,250	103.4	55.5	1410	4
Ditching	60	1500	0.90	0.69	1,121	508	45,615	202.9	34,400	153.0	24,881	110.7	37.0	940	4
	72	1800	1.06	0.81	1,244	564	45,615	202.9	34,400	153.0	24,881	110.7	37.0	940	0

\*All capacities are SAE heaped ratings and with side cutters.

# LIFTING CAPACITIES

- Notes: 1. Ratings are based on SAE J1097.  
 2. Lifting capacity of the AXIS Series does not exceed 75% of tipping load with the machine on firm, level ground or 87% full hydraulic capacity.  
 3. The load point is a hook (not standard equipment) located on the back of the bucket.  
 4. \*Indicates load limited by hydraulic capacity.



**A:** Load radius  
**B:** Load point height  
**C:** Lifting capacity

## AXIS200LC



Rating over-side or 360 degrees



Rating over-front

Unit: lb (kg)

Conditions	Load point height	Load radius									
		10 ft. (3.05 m)		15 ft. (4.57 m)		20 ft. (6.10 m)		25 ft. (7.62 m)		30 ft. (9.15 m)	
Boom 18'8" (5.68 m) Arm 7'3" (2.2 m) Bucket 1.12 yd <sup>3</sup> (.86 m <sup>3</sup> ) Shoe 24" (600 mm)	20 ft. (6.10 m)					*9,485 (4302)	*9,485 (4302)				
	15 ft. (4.57 m)					*10,318 (4680)	10,023 (4546)				
	10 ft. (3.05 m)			*16,159 (7330)	14,860 (6740)	*12,133 (5503)	9,519 (4318)	10,513 (4769)	6,574 (2982)		
	5 ft. (1.52 m)					*14,181 (6432)	8,989 (4077)	10,252 (4650)	6,336 (2874)		
	Ground Line					14,243 (6461)	8,632 (3915)	10,048 (4558)	6,150 (2790)		
	-5 ft. (-1.52 m)			*21,774 (9877)	13,231 (6001)	14,099 (6395)	8,505 (3858)	9,992 (4532)	6,098 (2766)		
-10 ft. (-3.05 m)	*19,899 (9026)	*19,899 (9026)	*19,972 (9059)	13,419 (6087)	14,209 (6445)	8,601 (3901)					
-15 ft. (-4.57 m)			*15,778 (7157)	13,891 (6301)							
Boom 18'8" (5.68 m) Arm 9'7" (2.91 m) Bucket 1.12 yd <sup>3</sup> (.86 m <sup>3</sup> ) Shoe 24" (600 mm)	15 ft. (4.57 m)					*8,883 (4029)	*8,883 (4029)	*8,724 (3957)	6,856 (3110)		
	10 ft. (3.05 m)			*13,702 (6215)	*13,702 (6215)	*10,818 (4907)	9,684 (4393)	*9,551 (4332)	6,629 (3007)		
	5 ft. (1.52 m)			*18,545 (8412)	14,058 (6377)	*13,097 (5941)	9,094 (4125)	10,272 (4659)	6,342 (2877)		
	Ground Line			*21,407 (9710)	13,309 (6037)	14,271 (6473)	8,640 (3919)	10,004 (4538)	6,097 (2766)		
	-5 ft. (-1.52 m)	*13,714 (6221)	*13,714 (6221)	*22,036 (9995)	13,091 (5938)	14,012 (6356)	8,411 (3815)	9,857 (4471)	5,963 (2705)		
	-10 ft. (-3.05 m)	*23,423 (10 624)	*23,423 (10 624)	*21,039 (9543)	13,167 (5972)	14,001 (6351)	8,402 (3811)	9,902 (4491)	6,004 (2723)		
-15 ft. (-4.57 m)	*24,915 (11 301)	*24,915 (11 301)	*18,123 (8220)	13,497 (6122)	*13,140 (5960)	8,651 (3924)					
Boom 18'8" (5.68 m) Arm 7'3" (2.2 m) Bucket 1.12 yd <sup>3</sup> (.86 m <sup>3</sup> ) Shoe 28" (700 mm)	20 ft. (6.10 m)					*9,485 (4302)	*9,485 (4302)				
	15 ft. (4.57 m)					*10,318 (4680)	10,204 (4628)				
	10 ft. (3.05 m)			*16,159 (7330)	15,124 (6860)	*12,133 (5503)	9,700 (4400)	*10,563 (4791)	6,711 (3044)		
	5 ft. (1.52 m)					*14,181 (6432)	9,170 (4159)	10,467 (4748)	6,473 (2936)		
	Ground Line					14,535 (6593)	8,813 (3998)	10,264 (4656)	6,287 (2852)		
	-5 ft. (-1.52 m)			*21,774 (9877)	13,496 (6122)	14,391 (6528)	8,685 (3939)	10,207 (4630)	6,235 (2828)		
-10 ft. (-3.05 m)	*19,899 (9026)	*19,899 (9026)	*19,972 (9059)	13,684 (6207)	14,501 (6578)	8,782 (3983)					
-15 ft. (-4.57 m)			*15,778 (7157)	14,155 (6420)							
Boom 18'8" (5.68 m) Arm 9'7" (2.91 m) Bucket 1.12 yd <sup>3</sup> (.86 m <sup>3</sup> ) Shoe 28" (700 mm)	15 ft. (4.57 m)					*8,883 (4029)	*8,883 (4029)	*8,724 (3957)	6,856 (3110)		
	10 ft. (3.05 m)			*13,702 (6215)	*13,702 (6215)	*10,818 (4907)	9,684 (4393)	*9,551 (4332)	6,629 (3007)		
	5 ft. (1.52 m)			*18,545 (8412)	14,058 (6377)	*13,097 (5941)	9,094 (4125)	10,272 (4659)	6,342 (2877)		
	Ground Line			*21,407 (9710)	13,309 (6037)	14,271 (6473)	8,640 (3919)	10,004 (4538)	6,097 (2766)		
	-5 ft. (-1.52 m)	*13,714 (6221)	*13,714 (6221)	*22,036 (9995)	13,091 (5938)	14,012 (6356)	8,411 (3815)	9,857 (4471)	5,963 (2705)		
	-10 ft. (-3.05 m)	*23,423 (10 624)	*23,423 (10 624)	*21,039 (9543)	13,167 (5972)	14,001 (6351)	8,402 (3811)	9,902 (4491)	6,004 (2723)		
-15 ft. (-4.57 m)	*24,915 (11 301)	*24,915 (11 301)	*18,123 (8220)	13,497 (6122)	*13,140 (5960)	8,651 (3924)					
Boom 18'8" (5.68 m) Arm 7'3" (2.2 m) Bucket 1.12 yd <sup>3</sup> (.86 m <sup>3</sup> ) Shoe 32" (800 mm)	20 ft. (6.10 m)					*9,485 (4302)	*9,485 (4302)				
	15 ft. (4.57 m)					*10,318 (4680)	*10,318 (4680)				
	10 ft. (3.05 m)			*16,159 (7330)	15,306 (6942)	*12,133 (5503)	9,824 (4456)	*10,563 (4791)	6,806 (3087)		
	5 ft. (1.52 m)					*14,181 (6432)	9,294 (4216)	10,616 (4815)	6,568 (2979)		
	Ground Line					14,737 (6685)	8,937 (4054)	10,412 (4723)	6,382 (2894)		
	-5 ft. (-1.52 m)			*21,774 (9877)	13,678 (6204)	14,593 (6619)	8,810 (3996)	10,355 (4697)	6,330 (2871)		
-10 ft. (-3.05 m)	*19,899 (9026)	*19,899 (9026)	*19,972 (9059)	13,866 (6290)	14,702 (6669)	8,907 (4040)					
-15 ft. (-4.57 m)			*15,778 (7157)	14,337 (6503)							
Boom 18'8" (5.68 m) Arm 9'7" (2.91 m) Bucket 1.12 yd <sup>3</sup> (.86 m <sup>3</sup> ) Shoe 32" (800 mm)	15 ft. (4.57 m)					*8,883 (4029)	*8,883 (4029)	*8,724 (3957)	7,088 (3215)		
	10 ft. (3.05 m)			*13,702 (6215)	*13,702 (6215)	*10,818 (4907)	9,990 (4531)	*9,551 (4332)	6,861 (3112)		
	5 ft. (1.52 m)			*18,545 (8412)	14,504 (6579)	*13,097 (5941)	9,399 (4263)	10,636 (4824)	6,574 (2982)		
	Ground Line			*21,407 (9710)	13,755 (6239)	14,764 (6697)	8,945 (4057)	10,367 (4702)	6,329 (2871)		
	-5 ft. (-1.52 m)	*13,714 (6221)	*13,714 (6221)	*22,036 (9995)	13,538 (6141)	14,505 (6579)	8,716 (3954)	10,220 (4636)	6,195 (2810)		
	-10 ft. (-3.05 m)	*23,423 (10 624)	*23,423 (10 624)	*21,039 (9543)	13,614 (6175)	14,495 (6575)	8,707 (3949)	10,266 (4657)	6,236 (2829)		
-15 ft. (-4.57 m)	*24,915 (11 301)	*24,915 (11 301)	*18,123 (8220)	13,943 (6324)	*13,140 (5960)	8,957 (4063)					

## EQUIPMENT

## STANDARD EQUIPMENT

## ENGINE

- Meets EPA Tier II non-road emissions regulations
- H/P mode control
- E mode control
- 50 A alternator
- Cartridge-type engine oil filter
- Cartridge-type fuel filter
- Air cleaner double filters
- Radiator and oil cooler with dust protective net
- Radiator reserve tank
- Fan guard
- Isolation-mounted engine
- Auto-idle system
- Auto acceleration system

## HYDRAULIC SYSTEM

- Work mode selector
- Engine speed sensing system
- E-P control system
- Power boost
- Auto power lift
- Quick warm-up system for pilot circuit
- Shockless valve in pilot circuit
- Boom-arm reduced drift valve
- Control valve with main relief valve
- Extra auxiliary port in control valve
- Suction filter
- Full-flow filter
- Pilot filter

## CAB

- CRES (Center pillar Reinforced Structure) design
- All-weather sound-suppressed steel cab
- Reinforced, tinted (bronze color) glass windows
- 4 fluid-filled elastic mounts
- Upper and lower front windows and left side windows that open
- Intermittent windshield retractable wipers
- Front window washer
- Deluxe suspension cloth seat with 4" (100 mm) adjustable armrests with lumbar support
- Footrest
- Electric double horn
- 12 V-60 W, 5 amp, cellular phone outlet
- AM-FM stereo with digital clock
- Auto-idle/acceleration selector

- Seat belt, 2" (50 mm) retractable
- Large cup holder
- Cigarette lighter
- Ashtray
- Storage box
- Glove compartment
- Transparent tinted overhead hatch with sunshade
- Floor mat
- Pilot control shut-off lever
- Engine stop knob
- Auto-control air conditioning with heater

## MONITOR SYSTEM

- Meters:
  - Hourmeter, trip meter, engine coolant temperature gauge, and fuel gauge
- Warning lamps:
  - Alternator charge, engine oil pressure, engine overheat, air filter restriction, and minimum fuel level
- Pilot lamps:
  - Engine preheat, work light, auto-idle, auto-acceleration, digging mode, attachment mode
- Alarm buzzers:
  - Engine oil pressure and engine overheat

## LIGHTS

- 2 working lights

## UPPERSTRUCTURE

- Undercover
- 9,370 lb (4 250 kg) counterweight
- Fuel level float
- Hydraulic oil level gauge
- Tool box
- Utility space
- Rearview mirror (right and left side)
- Swing parking brake

## UNDERCARRIAGE

- Travel parking brake
- Travel motor covers
- Travel motion alarm device
- Track guards and hydraulic track adjuster
- Bolt-on sprocket
- Upper rollers and lower rollers
- Reinforced track links with pin seals

## FRONT ATTACHMENTS

- HN bushing
- WC thermal spraying
- Reinforced resin thrust plate
- Bucket clearance adjust mechanism
- Monolithically cast bucket link A
- Centralized lubrication system
- Dirt seal on all bucket pins

## MISCELLANEOUS

- Lockable machine covers
- Lockable fuel filling cap
- Skid-resistant tapes, plates and handrails
- Travel direction mark on track frame
- On-board MIC

## OPTIONAL EQUIPMENT

- 7' 3" (2.22 m) arm
- 9' 7" (2.91 m) arm
- 24" (600 mm) reinforced triple grouser shoes
- 28" (700 mm) reinforced triple grouser shoes
- 32" (800 mm) reinforced triple grouser shoes
- Window vandal protection covers
- Auxiliary hydraulic and electric pilot controls
- Hydraulic filter restriction indicator kit
- Auxiliary hydraulic lines with shutoff valve
- Buckets: ditching, general purpose, general purpose high capacity, heavy-duty, heavy-duty high capacity, severe-duty cast lip, severe-duty plate lip, side cutters and teeth
- Hydraulic bucket material clamps
- Hydraulic coupler
- Seat belt, 3" (76 mm) non-retractable
- Alternate pilot control pattern
- Cab circulation fan
- 24- to 12-volt, DC radio converters, 10 amp
- Secondary exit kit-top hatch
- Ripper
- Boom and arm anti-drift valves
- Lower front window guard
- Tropical door – left and right hand side
- Less boom and arm
- Single pedal propel control
- Heavy-duty grapple
- Protection screens for cab front, rear and side
- ISO Standard Falling Object Protective (FOPS) cab with integrated headguard
- Rub rail style guards
- Undercarriage frame opening guard
- Cab extension harness
- Tool kit

# HITACHI

Hitachi Construction Products

P.O. Box 8806 • 1515 5th Avenue • Moline, IL 61265

DKA200HT (04-04)

*These specifications are subject to change without notice. Illustrations and photos show the standard models, and may or may not include optional equipment, accessories, and all standard equipment with some differences in color and features.*