

365C/ 365C L

Hydraulic Excavator



Engine

Engine Model	Cat® C15 ACERT® engine	
Net Flywheel Power	302 kW	404 hp

Drive

Maximum Travel Speed	4.1 km/h	2.6 mph
Maximum Drawbar Pull – Long Undercarriage	462 kN	103,767 lb

Weights

Operating Weight – Long Undercarriage	65 960 kg	145,430 lb
--	-----------	------------

- Reach Boom, R3.6 (11'10") stick, 1025 mm (40") bucket, and 650 mm (26") shoes.

365C/365C L Hydraulic Excavator

High performance and rugged durability combine to maximize your productivity.

Engine

- ✓ The Cat C15 engine has state-of-the-art ACERT technology to meet EU Stage II emission regulations, with exceptional performance capabilities and proven reliability. **pg. 4**

Hydraulics

Proportional Priority Pressure Compensated (PPPC) system with state-of-the-art electronic control ensures hydraulic system efficiency and excellent productivity. **pg. 5**

Operator Station

- ✓ An all-new cab provides improved visibility and comfort. The new monitor is a full-color graphical display with enhanced functionality to provide simple, comprehensive machine interface. **pg. 6**

Front Linkage

- ✓ Caterpillar® excavator booms and sticks are built for performance and long service life. Two types of booms and six lengths of sticks are available, offering a range of configurations suitable for a wide variety of applications. All booms and sticks are stress relieved. **pg. 11**

Buckets

A variety of work tools, including buckets, couplers, hammers, and shears are available through Cat Work Tools. **pg. 12**

High level of sustained production, higher deep trenching and pipe-laying performance, improved reliability and durability increase your productivity and lower your operating costs.



Electronic Control System

Engine and machine Electronic Control Modules maximize fuel efficiency and performance by maintaining the optimum balance between engine speed and hydraulic demand. **pg. 8**

Undercarriage

✓ Cat designed excavator undercarriage is stable, durable and low maintenance. The undercarriage is a long, variable gauge type for good machine stability and transportability. **pg. 9**

Structures

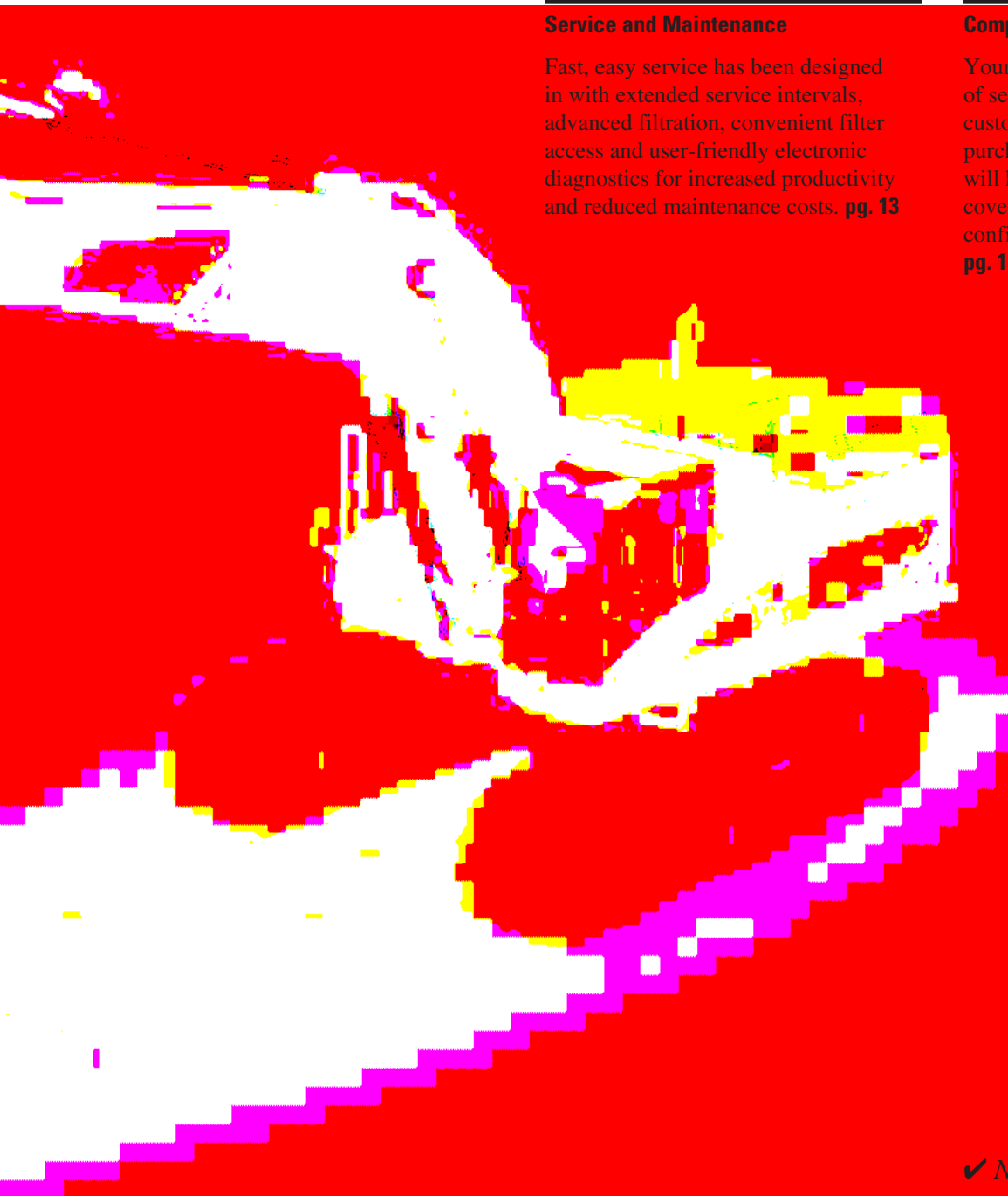
Caterpillar design and manufacturing techniques assure outstanding durability and service life from these important components. The 365CL uses thicker plates at the boom foot area to improve rigidity. **pg. 10**

Service and Maintenance

Fast, easy service has been designed in with extended service intervals, advanced filtration, convenient filter access and user-friendly electronic diagnostics for increased productivity and reduced maintenance costs. **pg. 13**

Complete Customer Support

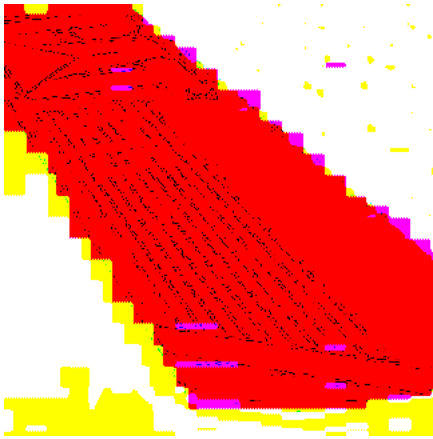
Your Cat dealer offers a wide range of services that can be set up under a customer support agreement when you purchase your equipment. The dealer will help you choose a plan that can cover everything from machine configuration to eventual replacement. **pg. 14**



✓ *New Feature*

Engine

A combination of innovations working at the point of combustion, ACERT technology optimizes engine performance while meeting EU Stage II emission regulations.



Diesel Engine. The Caterpillar C15, with ACERT technology, is a 15.2 liter, six-cylinder, 302 kW (404 hp) engine with mechanically actuated electronic fuel injection (MEUI) and overhead camshaft. ACERT technology provides outstanding engine performance through advanced electronic control, precision fuel delivery, and refined air management.

Fuel Consumption. The Advanced Diesel Engine Management (A4) controller uses sensors throughout the engine to manage engine load and performance. The A4 controller is the muscle behind engine responsiveness, self-diagnostics, controlling emissions, and fuel economy.

Fuel System. The Cat C15 ACERT engine uses a mechanically actuated electrically controlled unit injection (MEUI) system. The MEUI system combines high- pressure injection and electronic control in a single compact unit. The electronic unit injector is an integral part of the C15 fuel system. Computerized electronic control provides precise metering and timing of fuel injection.

Cooling System. High capacity, side-by-side cooling system allows operation in ambient temperatures up to 52 degree C (126 degree F). The Electric Power Control (EPC) controls the fan speed based on coolant temperature and hydraulic oil temperature for optimized cooling.

Turbocharger. The C15 engine uses a water-cooled, center-section waste gated turbocharger for improved performance. This turbocharger controls the air volume to the cylinders and works efficiently during low and high load conditions.

Emissions. ACERT Technology is a differentiated technology that reduces emissions at the point of combustion. The technology capitalizes on proven Caterpillar leadership in three core engine systems: fuel, air and electronics.

Cold Weather Starting Kit. The kit consists of two additional batteries, heavy-duty harness, large capacity starting motor, and the ether starting aid. With this kit, the 365C has the capability to start at -32 degree C (-25.6 degree F).

Hydraulics

Cat hydraulics deliver power and precise control to keep material moving.



PPPC Hydraulics. Load sensing, Proportional Priority Pressure Compensation (PPPC) system, with Caterpillar-developed electronic actuation, provides high efficiency and excellent controllability.

- Cylinder speed is directly related to operator's movement of joystick from feathering to full speed.
- Flow to cylinders during multifunctional operation is directly controlled by the operator and is not dependent on loads.
- Controller reduces pump output to minimum to save power when joysticks are in neutral position.

Main Pumps. Large, heavy-duty main pumps and a separate swing pump provide quick cycle times during multi-function operation.



Reverse Swing Damping Valve.

Swing dampening valves reduce swing wag and produce smooth swing stops.

Auxiliary Hydraulic Valve. The auxiliary valve is standard on the 365C L. The auxiliary valve is used with optional control arrangements to operate tools such as hammers and shears.

Operator Station

Designed for simple, easy operation and comfort, the 365C L allows the operator to focus on production.



Cab Design. The workstation has been designed to be spacious, quiet and comfortable for the operator, assuring high productivity throughout the entire workday. Switches are conveniently located for easy access. The new monitor is located to provide excellent visibility and access.

Seat. The 365C L seat provides a variety of adjustments, including fore/aft, height and weight to suit the operator. Also included are adjustable armrests and a retractable seat belt. For additional comfort, a new heated air suspension seat is available as an attachment.

Hydraulic Activation Control Lever.

The hydraulic activation control lever deactivates hydraulic functions during engine start-up, and prevents unintentional machine operation.

Climate Control. Positive filtered ventilation with a pressurized cab comes standard on the 365C L. Fresh air or re-circulated air can be selected with a switch on the left console.

Windows. To maximize visibility, all glass is affixed directly to the cab eliminating the use of window frames. The upper front windshield opens, closes and stores on the roof above the operator with a one-touch action release system. The lower front windshield features a rounded design for excellent downward visibility and improves wiper coverage.

Wipers. Pillar-mounted parallelogram wiper, including a washer nozzle, increases the operator's viewing area and offers continuous and intermittent modes.

Skylight. An enlarged skylight with sunshade provides excellent visibility and good ventilation.

Monitor. The compact, full-color, graphical display monitor is new with the 365C L. The monitor has functions to display machine, maintenance, diagnostic and prognostic information. The angle of the monitor can be adjusted to face the operator and prevent sun glare.



Consoles. Redesigned consoles feature a simple, functional design to reduce operator fatigue, ease of switch operation and excellent visibility. Both consoles have attached armrests and allow the height of the armrests to be adjusted.

Cab Exterior. The exterior design uses thick steel tubing along the bottom perimeter of the cab, improving the resistance of fatigue and vibration. This design allows the FOGS to be bolted directly to the cab, at the factory or as an attachment later, enabling the machine to meet specifications and job site requirements.

Cab Mounts. The cab shell is attached to the frame with viscous rubber cab mounts, which dampen vibrations and sound levels while enhancing operator comfort.

Standard Cab Equipment. To enhance operator comfort and productivity, the 365C L cab includes a lighter, drink holder, coat hook, service meter, literature holder, magazine rack and storage compartment.

Machine Security. An optional Machine Security System (MSS) is available from the factory on the 365C L. MSS uses a special Caterpillar key with an embedded electronic chip for controlling unauthorized machine operation.

Product Link. The 365C L is "Product Link Ready" from the factory.

Electronic Control System

Manages the engine and hydraulics for maximum performance.



Monitor Display Screen. The monitor is a full color 400 x 234 pixels Liquid Crystal Display (LCD) graphic display. The Master Caution action lamp blinks ON and OFF when one of the critical conditions below occurs:

- Engine oil pressure low
- Coolant temperature high
- Hydraulic oil temperature high

Under normal conditions or default condition, the monitor display screen is divided into four areas; clock and throttle dial, gauge, event display and multi-information display.

Clock and Throttle Dial Display.

The clock, throttle dial and gas-station icon with green color are displayed in this area.

Gauge Display. Three analog gauges, fuel level, hydraulic oil temperature and coolant temperature, are displayed in this area.

Event Display. Machine event information is displayed in this area along with the icon and language.

Multi-information Display. This area is reserved for displaying information that is convenient for the operator. The “CAT” logo mark is displayed when no information is available to display.

Operator Gain/Response. This is used to suit the operators preference or application.

- Quicker, for fast response and more production
- Slower, for more precision
- Three preset settings with 21 available

Pattern Control Changer. The standard hand control pattern changer can be accessed through the monitor, to utilize either the standard excavator control pattern (SAE) or Backhoe-loader pattern (BHL).

Electronic Joysticks. Electronic joysticks provide features not possible with hydraulic pilot valves:

- Eliminate pilot lines in cab for quieter operation
- Simple pattern change through the monitor

Undercarriage

Durable undercarriage absorbs stresses and provides excellent stability.



Undercarriage Components.

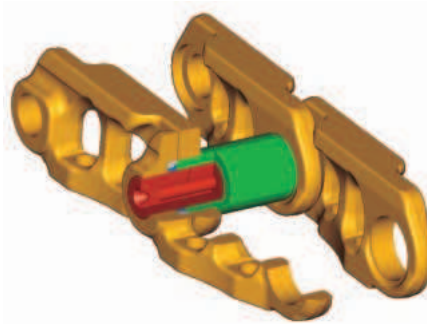
Large, Caterpillar designed and built undercarriage components offer heavy-duty performance and durability.

Sealed and Lubricated Rollers.

Track rollers, carrier rollers and idlers are sealed and lubricated for excellent service life.

Idler Guards and Track Guides.

Idler guards and center track guides used to maintain track alignment are standard on the 365C L. Optional two-piece full-length track guiding guards are available for additional protection on steep side slopes.



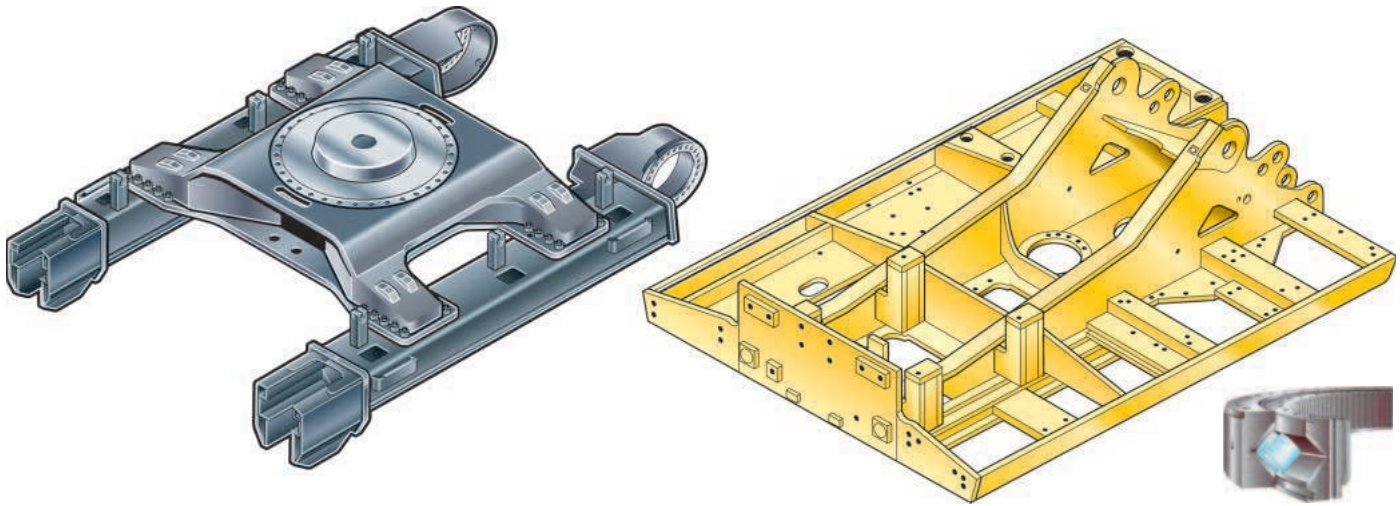
Track. The 365C L comes standard with the new grease lubricated track called GLT4. The track links are assembled and sealed with grease to decrease internal bushing wear, reduce travel noise, extend service life and lowering operating costs.

Travel Motor. Two-speed axial piston hydraulic motors provide the 365C L drive power and automatic speed selection when the high-speed position is selected. This enables the machine to automatically change between computer-controlled high and low speeds depending on drawbar-pull requirements.

Final Drives. The final drives are the three-stage reduction planetary type. This design results in a complete drive/brake unit that is compact and delivers excellent performance and reliability.

Structures

The 365C L structural components are the backbone of the machine's durability.



Carbody Design. The advanced carbody design stands up to the toughest applications.

- Modified X-shaped, box-section carbody provides excellent resistance to torsional bending.
- Upper structure weight and stresses are distributed evenly across the full length of the track roller frame.
- Robot welding ensures consistent, high-quality welds throughout the manufacturing process.

Upper Frame. The rugged main frame is designed for maximum durability and efficient use of materials.

- Robot welding for consistent, high-quality welds.

- Outer frame utilizes curved side rails, which are die-formed, for excellent uniformity and strength throughout the length.
- Box section channels improve upper frame rigidity under the cab.
- Boom tower and one piece main rails are constructed of solid, high-tensile strength steel plates.
- New boom foot design transfers load more efficiently with less stress in critical areas.
- Reinforced lift cylinder and swing drive mounts increase structure durability in rock and quarry applications.

Cross-roller Bearing. The 365C L swing bearing is a cross roller type, with 54 mm (2.13") diameter rollers. The cross rollers have a much greater contact area than ball bearings, providing increased stability and longer life.

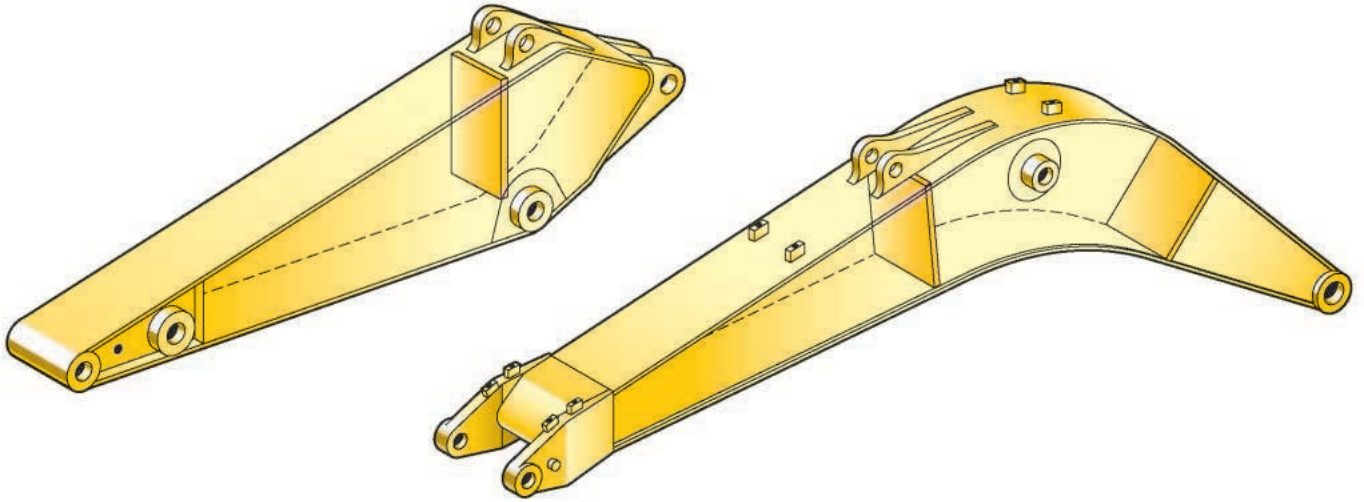
Track Roller Frames. The track roller frame is made up of a thick steel plate that is bent into a U-shape and welded to the bottom plate to create a box structure. The box structure design provides increased rigidity and impact resistance.

Variable Gauge Undercarriage.

The long variable gauge undercarriage is standard, providing a wide, stable base for operating, or a narrow gauge for reduced shipping width. The track roller frames are bolted to the carbody, and can be placed in two positions.

Front Linkage

The 365C L is designed for flexibility, high productivity, and efficiency in a variety of applications.



Front Linkage Attachments. Select the right combination of front linkage with your Cat dealer to ensure high productivity from the very start of your job. Two types of booms and six sticks are available, offering a range of configurations suitable for a wide variety of applications. The 365C L offers a large combination of reach and digging forces for optimum versatility.

Boom Construction. The 365C L booms have large cross-sections and internal baffle plates to provide long life durability. Castings and forgings are used in critical high-load areas such as the boom nose, boom foot, and boom cylinder connection.

Reach Boom. The 7.8 m (25 ft 7 in) Reach Boom (R), has been designed to balance the reach, digging force and bucket capacity required for a wide range of applications. Four reach sticks are available for use with the Reach boom.

Mass Excavation Boom. The Mass Excavation Boom (M) 6.59 m (21 ft 7 in) is designed to provide maximum productivity. Two Mass sticks are available for high digging forces and increased bucket capacity.

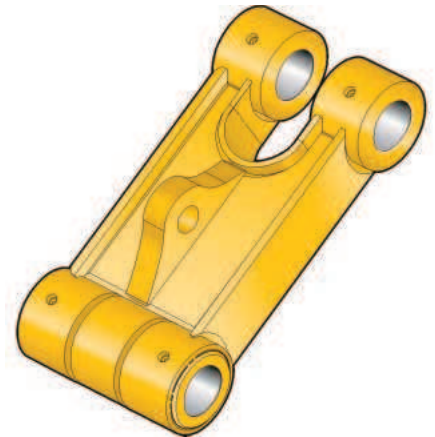
Stick Construction. The 365C L sticks are made of high-tensile strength steel using a large box section design with interior baffle plates and an additional bottom guard to protect against damage. All sticks undergo a stress relieving process for greater durability.

Reach Sticks. Four lengths of reach sticks are available to suite a variety of applications. Reach sticks use the VB-family bucket linkage and buckets.

Mass Sticks. Two mass excavation sticks are available for higher digging forces and increased bucket capacity. Mass sticks use WB-family bucket linkage and buckets.

Bucket Linkage. Two bucket linkages are available for the 365C L. Both linkages are available with or without a lifting eye on the power link.

- The VB bucket linkage is for use with the reach sticks and VB-family buckets.
- The WB bucket linkage is for use with the mass sticks and WB-family buckets



Power Link. The new 365C L power link improves durability, increases machine-lifting capability in key lifting positions, and is easier to use compared to the previous lift bar design.

Linkage Pins. All pins used in 365C L front linkages have thick chrome plating, giving them high wear and corrosion resistance. The large diameter pins smoothly distribute the shear and bending loads to help ensure long pin, boom and stick life.

Buckets

Extensive selection of buckets helps optimize machine performance.



Service and Performance.

Caterpillar buckets increase service life and optimize performance.

- High strength and heat treated steel are located in high wear areas.
- Dual radius design for increased heel clearance and reduced wear.
- VB-family buckets include a lift eye.
- A variety of exclusive hydraulic dedicated coupler buckets are also available.

General Purpose (GP) and Excavation (E) Buckets.

General Purpose (GP) and Excavation (E) buckets are for digging in soft to hard ground with low to moderate abrasive materials.

Heavy Duty (HD) and Extreme

Excavation (EX) Buckets. Heavy Duty buckets are intended for use in moderate materials like clay or dirt mixed with rock, and feature aggressive design for moderately abrasive applications. Differences from GP buckets are:

- Thicker cutting edges, thicker bottom and side wear plates that improve performance in demanding applications.

Heavy Duty Rock (HDR) and Rock (R)

Buckets. Heavy Duty Rock (HDR) and Rock (R) buckets for digging in fragmented rock, frozen ground, caliche and highly abrasive materials. Differences from HD buckets are:

- Additional, thicker wear plates extend beyond side plates for corner and rear dent protection and improved durability.
- Larger side plates provide additional dent protection.



Ground Engaging Tools. Caterpillar Ground Engaging Tools (GET) include a variety of side cutters, sidebar protectors, and tip options to match operating conditions.

Work Tools. Choose from a variety of work tools such as hammers, shears, rotators, grapples or crushers. Ask your Cat dealer for information on attachments or special configurations.

Service and Maintenance

Fast, easy service has been designed in with extended service intervals, advanced filtration, convenient filter access and user-friendly electronic diagnostics for increased productivity and reduced maintenance costs.

Service Intervals. Service intervals are extended to reduce maintenance costs.

- Engine oil, oil filter and fuel filters are at 500 hours

Oil Sample and Pressure Ports.

Oil sample and pressure ports provide easy checking of machine condition and are standard on every machine.

Hydraulic Capsule Filters. The return filters or capsule filters for the hydraulic system are located beside the hydraulic tank. The filter elements are removable without spilling hydraulic oil.

Service Points. Service points are centrally located with easy access to facilitate routine maintenance.

Pilot Hydraulic System Filter.

Pilot hydraulic system filter keeps contaminants from the pilot system and is located in the pump compartment.

Remote Greasing Block. A concentrated remote greasing block on the boom delivers grease to hard-to-reach locations.

Radial Seal Cleaner. Radial seal main air cleaner with precleaner has a double-layered filter element for more efficient filtration. No tools are required to change the element.

Fuel-Water Separator. The water separator removes water from fuel, even when under pressure, and water level can be monitored in the cab.



Complete Customer Support

Cat dealer services help you operate longer with lower costs.



Product Support. You will find nearly all parts at our dealer parts counter. Cat dealers utilize a worldwide computer network to find in-stock parts to minimize machine downtime. You can save money with Cat remanufactured components.

Machine Selection. Make detailed comparisons of the machines you are considering before you buy. What are the job requirements, machine attachments and operating hours? What production is needed? Your Cat dealer can provide recommendations.

Purchase. Look past initial price.

Consider the financing options available as well as day-to-day operating costs. This is also the time to look at dealer services that can be included in the cost of the machine to yield lower equipment owning and operating costs over the long run.

Customer Support Agreements.

Cat dealers offer a variety of product support agreements, and work with customers to develop a plan the best meets specific needs. These plans can cover the entire machine, including attachments, to help protect the customer's investment.

Operation. Improving operating techniques can boost your profits. Your Cat dealer has videotapes, literature and other ideas to help you increase productivity, and Caterpillar offers certified operator training classes to help maximize the return on your investment.

Maintenance Services. Repair option programs guarantee the cost of repairs up front. Diagnostic programs such as Scheduled Oil Sampling, Coolant Sampling and Technical Analysis help you avoid unscheduled repairs.

Replacement. Repair, rebuild or replace? Your Cat dealer can help you evaluate the cost involved so you can make the right choice.

Engine

Engine Model	Cat C15 ACERT engine	
Net Flywheel Power	302 kW	404 hp
ISO 9249	302 kW	404 hp
SAE J1349	302 kW	404 hp
EEC 80/1269	302 kW	404 hp
Bore	137 mm	5.4 in
Stroke	171 mm	6.75 in
Displacement	15.2 L	928 in ³

- The 365C L meets EU Stage II emission requirements.
- Net power advertised is the power available at the flywheel when the engine is equipped with fan, air cleaner, muffler and alternator.
- No engine power derating required below 2300 m (7,500 ft) altitude.

Weights

Operating Weight – Long Undercarriage	65 960 kg	145,430 lb
---------------------------------------	-----------	------------

- Reach Boom, R3.6 (11'10") stick, 1025 mm (40") bucket, and 650 mm (26") shoes.

Operating Specifications

Max Reach at Ground Level	14.04 m	46 ft
Max Digging Depth	9.64 m	31 ft 8 in
Bucket Digging Force	193 kN	43,400 lb
Stick Digging Force	256 kN	59,600 lb
Max Bucket Capacity	3.8 m ³	5 yd ³
Nominal Bucket Weight	1912 kg	4,210 lb
Bucket Digging Force – Normal	256 kN	59,600 lb

Track

Standard w/Long Undercarriage	900 mm	36 in
Optional for Long Undercarriage	750 mm	30 in
Optional for Long Undercarriage	650 mm	26 in
Number of Shoes Each Side – Long Undercarriage	47	
Number of Track Rollers Each Side – Long Undercarriage	8	
Number of Carrier Rollers Each Side	3	

Swing Mechanism

Swing Speed	6.5 rpm	
Swing Torque	204.5 kN•m	150,850 lb ft

Drive

Maximum Travel Speed	4.1 km/h	2.6 mph
Maximum Drawbar Pull – Long Undercarriage	462 kN	103,767 lb

Hydraulic System

Main System – Maximum Flow (Total)	800 L/min	212 gal/min
Swing System – Maximum Flow	357 L/min	94 gal/min
Maximum Pressure – Equipment – Normal	32 000 kPa	4,640 psi
Maximum Pressure – Equipment – Heavy Lift	35 000 kPa	5,080 psi
Maximum Pressure – Travel	35 000 kPa	5,080 psi
Maximum Pressure – Swing	28 000 kPa	4,060 psi
Pilot System – Maximum Flow	90 L/min	24 gal/min
Pilot System – Maximum Pressure	4120 kPa	600 psi
Boom Cylinder – Bore	190 mm	7.5 in
Boom Cylinder – Stroke	1792 mm	70.6 in
Stick Cylinder – Bore	200 mm	7.9 in
Stick Cylinder – Stroke	2118 mm	83.4 in
VB Family Bucket Cylinder – Bore	180 mm	7.1 in
VB Family Bucket Cylinder – Stroke	1443 mm	56.8 in
WB Family Bucket Cylinder – Bore	200 mm	7.9 in
WB Family Bucket Cylinder – Stroke	1457 mm	57.4 in

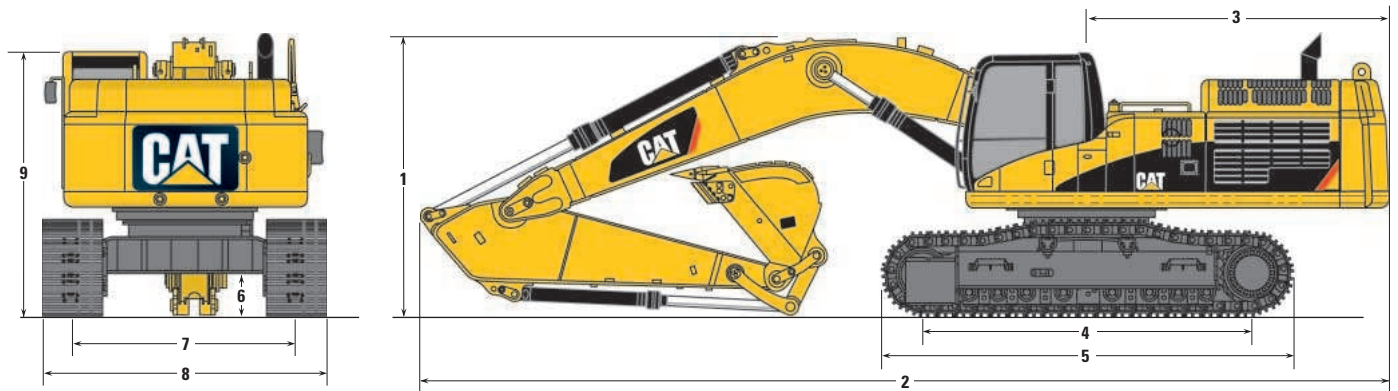
Service Refill Capacities

Fuel Tank Capacity	800 L	211 gal
Cooling System	95 L	25 gal
Engine Oil	54 L	14.3 gal
Swing Drive (each)	12 L	3.2 gal
Final Drive (each)	15 L	4 gal
Hydraulic System (including tank)	670 L	177 gal
Hydraulic Tank	310 L	82 gal

Sound Performance		Standards	
Performance	ANSI/SAE J1166 OCT98	Brakes	SAE J1026 APR90
<ul style="list-style-type: none"> When properly installed and maintained, the cab offered by Caterpillar, when tested with doors and windows closed according to ANSI/SAE J1166 OCT98, meets OSHA and MSHA requirements for operator sound exposure limits in effect at time of manufacture. Hearing protection may be needed when operating with an open operator station and cab (when not properly maintained or doors/windows open) for extended periods or in a noisy environment. 		Cab/FOGS	SAE J1356 FEB88 ISO10262

Dimensions

All dimensions are approximate.



	Reach Boom 7.8 m (25'7")				Mass Boom 6.59 m (21'7")	
Stick	R4.67 m (15'4")	R4.15 m (13'7")	R3.6 m (11'10")	R2.84 m (9'4")	M3.0 m (9'10")	M2.57 m (8'5")
1 Shipping Height	4960 mm (16'3")	4615 mm (15'2")	4390 mm (14'5")	4200 mm (13'9")	4560 mm (15'0")	4600 mm (15'1")
2 Shipping Length	13 170 mm (43'3")	13 225 mm (43'5")	13 310 mm (43'9")	13 310 mm (43'9")	12 150 mm (39'11")	12 160 mm (39'11")
3 Tail Swing Radius	4020 mm (13'3")	4020 mm (13'3")	4020 mm (13'3")	4020 mm (13'3")	4020 mm (13'3")	4020 mm (13'3")
4 Length to Center of Rollers	4705 mm (15'5")	4705 mm (15'5")	4705 mm (15'5")	4705 mm (15'5")	4705 mm (15'5")	4705 mm (15'5")
5 Track Length	5860 mm (19'3")	5860 mm (19'3")	5860 mm (19'3")	5860 mm (19'3")	5860 mm (19'3")	5860 mm (19'3")
6 Ground Clearance	840 mm (33")	840 mm (33")	840 mm (33")	840 mm (33")	840 mm (33")	840 mm (33")
7 Track Gauge (Shipping)*	2750 mm (9'0")	2750 mm (9'0")	2750 mm (9'0")	2750 mm (9'0")	2750 mm (9'0")	2750 mm (9'0")
8 Transport Width**	3500 mm (11'6")	3500 mm (11'6")	3500 mm (11'6")	3500 mm (11'6")	3500 mm (11'6")	3500 mm (11'6")
9 Cab Height	3535 mm (11'7")	3535 mm (11'7")	3535 mm (11'7")	3535 mm (11'7")	3535 mm (11'7")	3535 mm (11'7")

* Track Gauge in extended (working) position: 3250 mm (10'8")

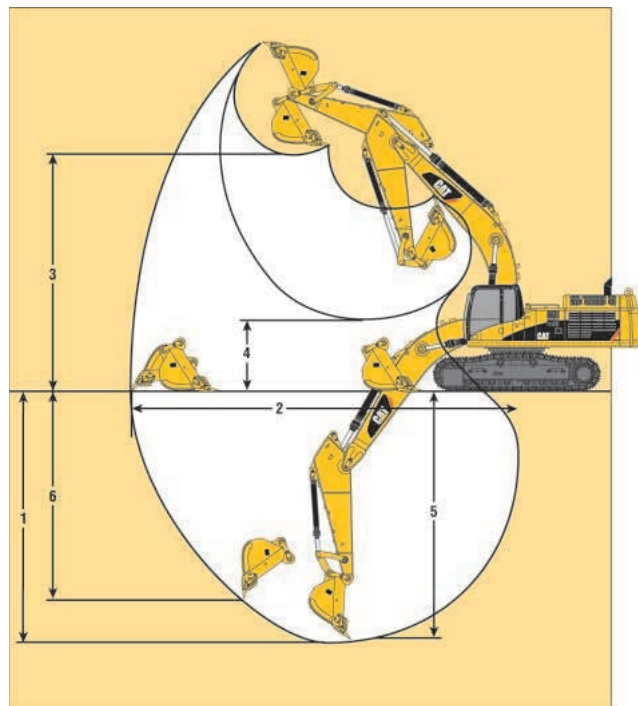
** Transport Width shown for 750 mm (30") shoes.

Add 150 mm (6") for 900 mm (36") shoes.

Subtract 100 mm (4") for 650 mm (26") shoes.

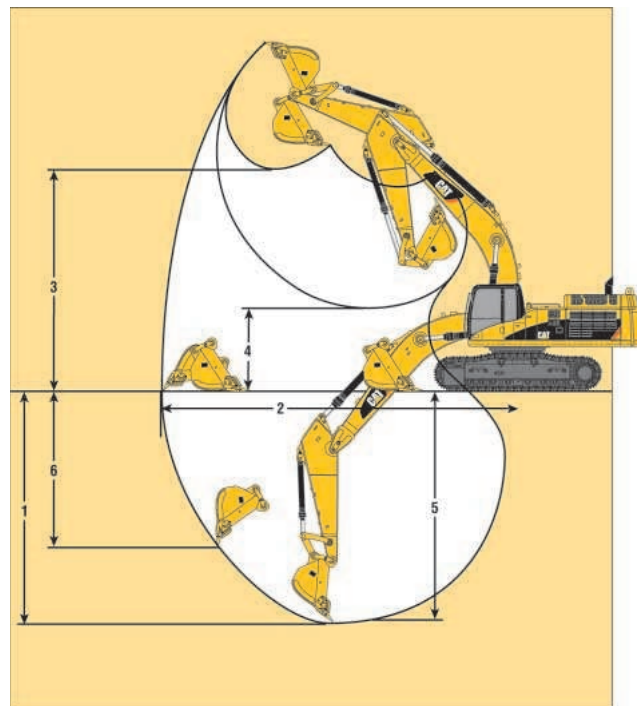
Reach Working Ranges

Reach (R) boom configuration



Mass Working Ranges

Mass (M) boom configuration



	Reach Boom 7.8 m (25'7")				Mass Boom 6.59 m (21'7")	
Stick	R4.67VB (15'4")	R4.15VB (13'7")	R3.60VB (11'10")	R2.84VB (9'4")	M3.00WB (9'10")	M2.57WB (8'5")
Bucket	HD 2.8 m 3.68 yd	HD 2.8 m 3.68 yd	HD 2.8 m 3.68 yd	HD 2.8 m 3.68 yd	Ex 4.6 m 6.00 yd	Ex 4.6 m 6.00 yd
1 Maximum Digging Depth	9640 mm (31'0")	8940 mm (29'4")	8390 mm (27'6")	7630 mm (25'0")	7170 mm (23'6")	6750 mm (22'2")
2 Maximum Reach at Ground Level	14 040 mm (46'1")	13 490 mm (44'3")	12 980 mm (42'7")	12 340 mm (40'6")	11 240 mm (36'11")	10 840 mm (35'7")
3 Maximum Loading Height	9190 mm (30'2")	8830 mm (29'0")	8600 mm (28'3")	8440 mm (27'8")	7090 mm (23'3")	6920 mm (22'8")
4 Minimum Loading Height	2420 mm (7'11")	2940 mm (9'8")	3490 mm (11'5")	4250 mm (13'11")	2910 mm (9'7")	3330 mm (10'11")
5 Maximum Depth Cut for 2240 mm (8') Level Bottom	9350 mm (30'8")	8820 mm (28'11")	8260 mm (27'1")	7480 mm (24'6")	7020 mm (23'0")	6580 mm (21'7")
6 Maximum Vertical Wall Digging Depth	8480 mm (27'10")	7790 mm (25'7")	7080 mm (23'3")	5870 mm (19'3")	5240 mm (17'6")	4950 mm (16'3")
Bucket Digging Force (SAE)	256 kN (59,600 lb)	256 kN (59,600 lb)	264 kN (59,300 lb)	277 kN (62,300 lb)	330 kN (74,200 lb)	330 kN (74,200 lb)
(ISO)	302 kN (67,900 lb)	302 kN (67,900 lb)	301 kN (67,600 lb)	316 kN (71,000 lb)	384 kN (86,300 lb)	383 kN (86,100 lb)
Stick Digging Force (SAE)	193 kN (43,400 lb)	209 kN (47,000 lb)	230 kN (51,700 lb)	257 kN (57,700 lb)	254 kN (57,000 lb)	277 kN (62,200 lb)
(ISO)	199 kN (44,700 lb)	216 kN (48,600 lb)	239 kN (53,700 lb)	268 kN (60,200 lb)	265 kN (59,500 lb)	290 kN (65,200 lb)

Operating Weight* and Ground Pressure

Configuration					Track							
	900 mm (36") Shoes				750 mm (30") Shoes				650 mm (26") Shoes			
	Operating Weight		Ground Pressure		Operating Weight		Ground Pressure		Operating Weight		Ground Pressure	
	kg	lb	kPa	psi	kg	lb	kPa	psi	kg	lb	kPa	psi
7.8 m (25'7") reach boom 1600 mm (63")												
R4.67 m (15'4") stick	69 680	153,616	74.3	10.78	68 630	151,301	87.8	12.73	67 950	149,802	100.3	14.55
R4.15 m (13'7") stick	69 520	153,263	74.1	10.75	68 470	150,948	87.6	12.70	67 790	149,449	100.1	14.52
R3.60 m (11'10") stick	69 310	152,800	73.9	10.72	68 260	150,485	87.4	12.68	67 580	148,986	99.8	14.47
R2.84 m (9'4") stick	69 100	152,337	73.7	10.69	68 050	150,022	87.1	12.63	67 370	148,523	99.5	14.43
7.8 m (25'7") reach boom 1700 mm (67")												
R4.67 m (15'4") stick	70 020	154,365	74.7	10.83	68 970	152,050	88.3	12.80	68 290	150,551	100.9	14.63
R4.15 m (13'7") stick	69 860	154,012	74.5	10.81	68 810	151,698	88.1	12.77	68 130	150,198	100.6	14.59
R3.60 m (11'10") stick	69 650	153,549	74.3	10.77	68 600	151,235	87.8	12.73	67 920	149,735	100.3	14.55
R2.84 m (9'4") stick	69 440	153,086	74.1	10.74	68 400	150,794	87.5	12.70	67 710	149,272	100.0	14.50
6.59 m (21'7") mass boom 2140 mm (84")												
M3.00 m (9'10") stick	70 850	156,195	75.6	10.96	69 800	153,880	89.4	12.97	69 120	152,381	102.1	14.81
M2.57 m (8'5") stick	70 900	156,305	75.6	10.96	69 850	153,990	89.5	12.98	69 170	152,491	102.1	14.81
6.59 m (21'7") mass boom 1850 mm (73") Rock												
M3.00 m (9'10") stick	70 850	156,195	75.6	10.96	69 800	153,880	89.4	12.97	69 120	152,381	102.1	14.81
M2.57 m (8'5") stick	70 900	156,305	75.6	10.96	69 850	153,990	89.5	12.98	69 170	152,491	102.1	14.81

* Operating weight includes full fuel tank and 75 kg (165 lb) operator.

365C Major Component Weights

	kg	lb
Base machine with counterweight and 900 mm (36") shoes (without front linkage)	54 890	121,000
Two boom cylinders	1335	2,900
Counterweight		
Removal type	9300	20,500
Non-removal type	10 050	22,200
Boom (includes lines, pins and stick cylinder)		
Reach boom 7.8 m (25'7")	6400	14,100
Mass boom 6.59 m (21'7")	6420	14,200
Stick (includes lines, pins, bucket cylinder and linkage)		
R4.67VB (15'4")	3980	8,800
R4.15VB (13'7")	3800	8,400
R3.6VB (11'10")	3580	7,900
R2.84VB (9'4")	3370	7,400
M3.0WB (9'10")	4230	9,300
M2.57WB (8'5")	4050	8,900
Track roller frame [includes frame, rollers, idlers, steps, guards, final drive, 900 mm (36") shoes] – each	10 810	23,800

365C L Bucket Specifications and Compatibility

	Capacity*		Width		Tip Radius		Weight w/o tips		Teeth	Reach Boom Stick				
	m³	yd³	mm	in	mm	in	kg	lb	Qty	R4.67VB	R4.15VB	R3.6VB	R2.84VB	
VB Buckets														
Excavation	2.5	3.31	1500	59	2120	83.5	2676	5,900	3	●	●	●	●	
	2.7	3.58	1600	63	2120	83.5	3020	6,650	4	◐	●	●	●	
	3.0	3.98	1700	67	2120	83.5	3364	7,400	4	○	◐	●	●	
	Capacity*		Width		Tip Radius		Weight w/o tips		Teeth	Mass Boom Stick				
	m³	yd³	mm	in	mm	in	kg	lb	Qty	M3.0WB	M2.57WB			
WB Buckets														
Excavation	2.7	3.52	1500	59	2210	87.0	3160	6,960	3	●	●			
	3.6	4.70	1850	73	2210	87.0	3620	7,970	4	●	●			
	4.2	5.48	2140	84	2210	87.0	3977	8,760	4	●	●			
Rock-V-Edge	3.6	4.70	1850	73	2350	92.5	3977	8,760	4	●	●			
	4.0	5.22	2000	79	2350	92.5	4186	9,220	4	●	●			

Assumptions for maximum material density rating

1. Front linkage fully extended at ground line
2. Bucket curled
3. 100% bucket fill factor

* Capacities based on SAE J296. Some calculations of capacity fall on borderlines. Rounding may allow two buckets to have the same English rating but different metric ratings.

- 2100 kg/m³ (3,500 lb/yd³) max material density
- ◐ 1800 kg/m³ (3,000 lb/yd³) max material density
- 1500 kg/m³ (2,500 lb/yd³) max material density

A schematic diagram of a mobile manipulator. It consists of a base with two large wheels, a vertical column with a revolute joint, a horizontal arm with a revolute joint, and a gripper at the end. A dimension line indicates the distance from the base to the gripper.

Load Radius
Over Side

UNDERCARRIAGE – Long
HEAVY LIFT – On

* Limited to hydraulic capacity rather than tipping load. The above loads are in compliance with hydraulic excavator lift capacity rating standard SAE J10567. They do not exceed 87% of hydraulic lifting capacity or 75% of tipping capacity. Weight of all lifting accessories must be deducted from the above lifting capacities.

UNDERCARRIAGE – Long
HEAVY LIFT – On

* Limited to hydraulic capacity rather than tipping load. The above loads are in compliance with hydraulic excavator lift capacity rating standard SAE J150 10567. They do not exceed 87% of hydraulic lifting capacity or 75% of tipping capacity. Weight of all lifting accessories must be deducted from the above lifting capacities.

Reach Boom Lift Capacities



Load Point
Height



Load at
Maximum Reach



Load Radius
Over Front



Load Radius
Over Side

BOOM – 7.8 m (25'7")
STICK – 3600 mm (11'10")

BUCKET – 1545 mm (60") GP with HD long tips
SHOES – 900 mm (36") double grouser

UNDERCARRIAGE – Long
HEAVY LIFT – On

	3.0 m/10.0 ft		4.5 m/15.0 ft		6.0 m/20.0 ft		7.5 m/25.0 ft		9.0 m/30.0 ft		10.5 m/35.0 ft				m ft
10.5 m 35.0 ft	kg lb												*6530 *14,500	*6530 *14,500	10.50 33.07
9.0 m 30.0 ft	kg lb								*10 280 *22,050	*10 280 *22,050			*6190 *13,700	*6190 *13,700	11.35 36.95
7.5 m 25.0 ft	kg lb								*12 000 *26,200	*12 000 *26,200			*6100 *13,450	*6100 *13,450	12.12 39.59
6.0 m 20.0 ft	kg lb						*14 370 *31,100	*14 370 *31,100	*12 700 *27,600	12 040 25,850	*11 610 *24,250	8920 19,000	*6150 *13,550	*6150 *13,550	12.61 41.30
4.5 m 15.0 ft	kg lb		*27 710 *59,250	*27 710 *59,250	*19 960 *42,950	*19 960 *42,950	*16 010 *34,600	15 810 34,050	*13 630 *29,550	11 580 24,850	*12 060 *26,200	8700 18,600	*6340 *13,950	5940 13,150	12.87 42.20
3.0 m 10.0 ft	kg lb				*22 800 *49,150	21 110 45,500	*17 650 *38,150	14 910 32,100	*14 590 *31,600	11 070 23,800	*12 570 *27,250	8430 18,050	*6660 *14,650	5760 12,700	12.91 42.37
1.5 m 5.0 ft	kg lb				*24 700 *53,350	19 820 42,700	*18 910 *40,900	14 140 30,450	*15 370 *33,250	10 600 22,800	12 770 27,400	8160 17,500	*7140 *15,700	5790 12,750	12.75 41.83
Ground Line	kg lb		*13 190 *30,750	*13 190 *30,750	*25 230 *54,600	19 090 41,100	*19 550 *42,300	13 600 29,250	*15 760 *34,100	10 250 22,050	12 550 26,950	7960 17,100	*7830 *17,250	6070 13,400	12.36 40.55
-1.5 m -5.0 ft	kg lb	*10 340 *23,500	*10 340 *23,500	*19 830 *45,550	*19 830 *45,550	*24 750 *53,600	18 820 40,450	*19 410 *42,000	13 330 28,650	*15 600 *33,700	10 060 21,600	12 460 26,800	*8840 *19,550	6670 7,760	11.73 38.46
-3.0 m -10.0 ft	kg lb	*18 240 *41,250	*18 240 *41,250	*23 860 *53,450	*23 860 *53,450	*23 240 *50,300	18 880 40,600	*18 370 *39,650	13 300 28,600	*14 620 *31,400	10 050 21,650		*8010 *17,500	7760 17,200	10.82 35.38
-4.5 m -15.0 ft	kg lb	*21 980 *48,900	*21 980 *48,900	*25 650 *55,400	*25 650 *55,400	*20 380 *43,900	19 220 41,350	*16 110 *34,500	13 520 29,100	*12 160 *25,400	10 290 22,250		*5560 *12,000	*5560 *12,000	9.52 31.00
-6.0 m -20.0 ft	kg lb			*19 410 *41,300	*19 410 *41,300	*15 570 *32,900	*15 570 *32,900	*11 540 *23,550	*11 540 *23,550						

* Limited to hydraulic capacity rather than tipping load. The above loads are in compliance with hydraulic excavator lift capacity rating standard SAE J/ISO 10567. They do not exceed 87% of hydraulic lifting capacity or 75% of tipping capacity. Weight of all lifting accessories must be deducted from the above lifting capacities.

BOOM – 7.8 m (25'7")
STICK – 2840 mm (9'4")

BUCKET – 1545 mm (60") GP with HD long tips
SHOES – 900 mm (36") double grouser

UNDERCARRIAGE – Long
HEAVY LIFT – On

	3.0 m/10.0 ft		4.5 m/15.0 ft		6.0 m/20.0 ft		7.5 m/25.0 ft		9.0 m/30.0 ft		10.5 m/35.0 ft				m ft
10.5 m 35.0 ft	kg lb												*7440 *16,550	*7440 *16,550	9.37 30.17
9.0 m 30.0 ft	kg lb						*11 290 *25,250	*11 290 *25,250					*6980 *15,450	*6980 *15,450	10.61 34.48
7.5 m 25.0 ft	kg lb						*14 370 *31,250	*14 370 *31,250	*26,850 25,750				*6830 *15,050	*6830 *15,050	11.44 37.35
6.0 m 20.0 ft	kg lb				*18 790 *40,500	*18 790 *40,500	*15 600 *33,750	*15 600 *33,750	*13 660 *29,700	11 810 25,350			*6840 *15,050	*6840 *15,050	11.97 39.17
4.5 m 15.0 ft	kg lb				*21 640 *46,600	*21 640 *46,600	*17 110 *37,000	15 470 33,300	*14 460 *31,350	11 400 24,500	*12 750 *26,300	8570 18,300	*6990 *15,400	6550 14,450	12.24 40.14
3.0 m 10.0 ft	kg lb				*24 100 *51,950	20 460 44,150	*18 530 *40,050	14 630 31,550	*15 260 *33,050	10 940 23,550	12 970 27,850	8370 17,900	*7290 *16,050	6360 14,000	12.29 40.32
1.5 m 5.0 ft	kg lb				*23 740 *53,950	19 430 41,850	*19 490 *42,150	13 970 30,100	*15 820 *34,250	10 550 22,700	12 760 27,400	8170 17,500	*7760 *17,100	6430 14,150	12.11 39.75
Ground Line	kg lb		*9870 *22,550	*9870 *22,550	*22 620 *50,900	18 970 40,850	*19 740 *42,750	13 560 29,200	*15 940 *34,450	10 280 22,100	12 630 27,150	8050 17,300	*8450 *18,600	6800 15,000	11.70 38.39
-1.5 m -5.0 ft	kg lb		*19 420 *45,000	*19 420 *45,000	*23 100 *52,000	18 910 40,650	*19 160 *41,650	13 410 28,850	*15 380 *33,150	10 180 21,900			*9050 *19,900	7560 16,700	10.03 36.14
-3.0 m -10.0 ft	kg lb	*20 070 *45,550	*20 070 *45,550	*23 450 *52,400	*23 450 *52,400	*21 950 *47,550	19 130 41,150	*17 570 *37,900	13 510 29,100	*13 720 *29,200	10 300 22,200		*6970 *15,200	*6970 *15,200	10.04 32.80
-4.5 m -15.0 ft	kg lb	*22 510 *49,900	*22 510 *49,900	*22 230 *47,900	*22 230 *47,900	*18 310 *39,300	*18 310 *39,300	14 370 30,450	13 900 30,000						
-6.0 m -20.0 ft	kg lb					*11 930 *11 930									

* Limited to hydraulic capacity rather than tipping load. The above loads are in compliance with hydraulic excavator lift capacity rating standard SAE J/ISO 10567. They do not exceed 87% of hydraulic lifting capacity or 75% of tipping capacity. Weight of all lifting accessories must be deducted from the above lifting capacities.

Mass Boom Lift Capacities



Load Point
Height



Load at
Maximum Reach



Load Radius
Over Front



Load Radius
Over Side

BOOM – 6.59 m (21'7")
STICK – 3000 mm (9'10")

BUCKET – 2200 mm (87") Excavation with HD long tips
SHOES – 900 mm (36") double grouser

UNDERCARRIAGE – Long
HEAVY LIFT – On

	3.0 m/10.0 ft		4.5 m/15.0 ft		6.0 m/20.0 ft		7.5 m/25.0 ft		9.0 m/30.0 ft				m ft
9.0 m 30.0 ft	kg lb										*4200 *9,350	*4200 *9,350	9.38 30.38
7.5 m 25.0 ft	kg lb						*12 860 *26,900	*12 860 *26,900			*3980 *8,800	*3980 *8,800	10.34 33.73
6.0 m 20.0 ft	kg lb						*13 790 *30,000	*13 790 *30,000	*9740 *17,500	*9740 *17,500	*3960 *8,700	*3960 *8,700	10.94 35.79
4.5 m 15.0 ft	kg lb		*24 740 *54,700	*24 740 *54,700	*18 550 *40,000	*18 550 *40,000	*15 250 *33,000	15 110 32,400	*13 250 *28,400	10 480 22,350	*4100 *9,000	*4100 *9,000	11.24 36.86
3.0 m 10.0 ft	kg lb		*30 590 *65,700	*30 590 *65,700	*21 490 *46,350	21 210 45,600	*16 850 *36,450	14 380 30,850	*14 060 *30,450	10 150 21,650	*4410 *9,700	*4410 *9,700	11.29 37.05
1.5 m 5.0 ft	kg lb		*30 450 *72,950	*30 450 *72,950	*23 730 *51,250	19 910 42,800	*18 170 *39,300	13 680 29,350	*14 710 *31,800	9800 20,950	*4900 *10,800	*4900 *10,800	11.08 36.38
Ground Line	kg lb		*31 670 *73,750	30 910 66,300	*24 720 *53,450	19 080 41,000	*18 830 *40,700	13 180 28,300	*14 860 *32,000	9540 20,450	*5660 *12,500	*5660 *12,500	10.61 34.81
-1.5 m -5.0 ft	kg lb	*20 590 *46,550	*20 590 *46,550	*33 020 *71,600	30 770 65,900	*24 280 *52,500	18 760 40,300	*18 470 *39,850	12 950 27,800	*13 930 9480	*6860 *15,200	*6860 *15,200	9.83 32.20
-3.0 m -10.0 ft	kg lb	*30 440 *67,500	*30 440 *67,500	*29 600 *64,000	*29 600 *64,000	*22 150 *47,700	18 880 40,550	*16 510 *35,250	13 050 28,050				
-4.5 m -15.0 ft	kg lb	*31 100 *66,700	*31 100 *66,700	*23 490 *50,250	*23 490 *50,250	*17 330 *36,600	*17 330 *36,600						

* Limited to hydraulic capacity rather than tipping load. The above loads are in compliance with hydraulic excavator lift capacity rating standard SAE J/ISO 10567. They do not exceed 87% of hydraulic lifting capacity or 75% of tipping capacity. Weight of all lifting accessories must be deducted from the above lifting capacities.

BOOM – 6.59 m (21'7")
STICK – 2570 mm (8'5")

BUCKET – 2200 mm (87") Excavation with HD long tips
SHOES – 900 mm (36") double grouser

UNDERCARRIAGE – Long
HEAVY LIFT – On

	3.0 m/10.0 ft		4.5 m/15.0 ft		6.0 m/20.0 ft		7.5 m/25.0 ft		9.0 m/30.0 ft				m ft
9.0 m 30.0 ft	kg lb										*5150 *11,450	*5150 *11,450	8.88 28.72
7.5 m 25.0 ft	kg lb						*13 710 *27,400	*13 710 *27,400			*4890 *10,800	*4890 *10,800	9.91 32.29
6.0 m 20.0 ft	kg lb						*14 520 *31,550	*14 520 *31,550			*4860 *10,700	*4860 *10,700	10.54 34.47
4.5 m 15.0 ft	kg lb		*26 450 *56,650	*26 450 *56,650	*19 480 *42,000	*19 480 *42,000	*15 870 *34,350	14 850 31,850	*13 570 *25,250	10 250 21,800	*5020 *11,050	*5020 *11,050	10.86 35.59
3.0 m 10.0 ft	kg lb		*31 830 *68,400	*31 830 *68,400	*22 190 *47,850	20 780 44,700	*17 320 *37,450	14 150 30,350	*14 380 *31,150	9980 21,300	*5360 *11,800	*5360 *11,800	10.90 35.78
1.5 m 5.0 ft	kg lb		*25 770 *61,800	*25 770 *61,800	*24 080 *52,000	19 550 42,050	*18 430 *39,850	13 500 28,950	*14 840 *32,050	9690 20,700	*5910 *13,000	*5910 *13,000	10.69 35.08
Ground Line	kg lb		*31 090 *72,000	30 470 65,350	*24 660 *53,350	18 850 40,500	*18 820 *40,700	13 070 28,050	*14 680 *30,950	9490 20,300	*6770 *14,900	*6770 *14,900	10.19 33.44
-1.5 m -5.0 ft	kg lb	*22 120 *50,050	*22 120 *50,050	*31 820 *69,050	30 590 65,550	*23 770 *51,400	18 670 40,100	*18 090 *38,950	12 930 27,750				
-3.0 m -10.0 ft	kg lb	*30 490 *67,550	*30 490 *67,550	*27 820 *60,200	*27 820 *60,200	*21 080 *45,350	18 940 40,700	*15 340 *32,350	13 170 28,350				
-4.5 m -15.0 ft	kg lb	*26 360 *58,300	*26 360 *58,300	*20 800 *44,250	*20 800 *44,250	*14 980 *31,000	*14 980 *31,000						

* Limited to hydraulic capacity rather than tipping load. The above loads are in compliance with hydraulic excavator lift capacity rating standard SAE J/ISO 10567. They do not exceed 87% of hydraulic lifting capacity or 75% of tipping capacity. Weight of all lifting accessories must be deducted from the above lifting capacities.

Standard Equipment

Standard equipment may vary. Consult your Caterpillar dealer for details.

Electrical

- Alternator – 75 ampere
- Lights
 - Cab interior
- Signal/warning horn

Engine/Power Train

- Automatic engine speed control
- Automatic swing parking brake
- Automatic travel parking brakes
- Caterpillar C15 ATAAC with ACERT technology
 - Altitude capability to 2300 m (7,500 ft) without derating
 - EU Stage II emission compliant
- High ambient cooling, 52° C (126° F) capability
- Side-by-side cooling system with separately mounted
 - AC condenser and variable speed fan
- Two speed travel
- Water separator, with level indicator, for fuel line

Guards

- Heavy duty bottom guards on upper frame
- Heavy duty swivel guard on undercarriage
- Heavy duty travel motor guards on undercarriage

Operator Station

- Air conditioner, heater and defroster with automatic climate control
- Ashtray and 24 volt lighter
- Beverage/cup holder
- Cab glass/glazing
 - Openable and retractable two-piece front windshield
 - Stationary skylight (polycarbonate)
- Coat hook
- Console mounted electronic type joysticks with adjustable gain and response
- Floor mat
- Instrument panel and gauges with full color graphical display
- Literature compartment
- Lunch box storage with lid
- Neutral lever (lock out) for all controls
- Positive filtered ventilation
- Pressurized cab
- Retractable seat belt 51 mm (2 in) width
- Sunshade for windshield and skylight
- Travel control pedals with removable hand levers
- Windshield wipers and washers (upper and lower)

Undercarriage

- Double grouser 750 mm (30 in)
- Grease lubricated track
- Hydraulic track adjusters
- Idler and center section track guards
- Long, variable gauge
- Steps – four

Other Standard Equipment

- Auxiliary hydraulic valve for hydro-mechanical tools
- Caterpillar one key security system with locks for doors, cab and fuel cap
- Cat walks – left side and right side
- Cross-roller type swing bearing
- Drive for auxiliary pump
- Hand control pattern changer
- Heavy lift mode
- Mirrors – left and right
- S•O•SSM quick sampling valves for engine oil and hydraulic oil
- Steel firewall between engine and hydraulic pumps
- Travel alarm with cut off switch
- Wiring provisions for Product Link, Auto-lube System and lighted beacon

Optional Equipment

Optional equipment may vary. Consult your Caterpillar dealer for details.

Front Linkage

Booms

- Mass excavation 6.59 m (21 ft 7 in) with two working lights
- Reach 7.8 m (25 ft 7 in) with two working lights

Sticks

- M 2.57WB (8 ft 5 in) for mass boom
- M 3.0WB (9 ft 10 in) for mass boom
- R2.84VB (9 ft 4 in) for reach boom
- R3.6VB (11 ft 10 in) for reach boom
- R4.15VB (13 ft 7 in) for reach boom
- R4.67VB (15 ft 4 in) for reach boom

Bucket Linkages

- VB-family for VB sticks (available with or without lifting eye)
- WB-family for WB sticks (available with or without lifting eye)

Buckets – see chart

Tips, sidecutters and edge protectors

Track

- Double grouser 650 mm (26 in)
- Double grouser 750 mm (30 in)
- Double grouser 900 mm (36 in)

Guards

- FOGS (Falling Object Guard System) including overhead and windshield guards
- Track guiding guards – full length
- Vandal guards for windshield
- Wire mesh screen for windshield

Auxiliary Controls and Lines

Basic control arrangements

- Combined function for 1-way or 2-way high pressure circuits includes joysticks and modulation switch
- Medium pressure circuit

Auxiliary boom lines

- High pressure for reach and mass booms

Auxiliary stick lines

- High pressure lines for reach and mass sticks

Miscellaneous Options

- Adjustable high-back heated seat with air suspension
- Adjustable high-back seat with air suspension
- AM/FM radio with antenna and two speakers
- Auto lubricator
- Boom lowering control device
- Counterweight removal system
- Machine security system with programmable keys
- Starting aid for cold weather with ether
- Stick lowering control device
- Straight travel pedal

365C/365C L Hydraulic Excavator

For more complete information on Cat products, dealer services,
and industry solutions, visit us on the web at **www.cat.com**

© 2007 Caterpillar
All Rights Reserved
Printed in U.S.A.

Materials and specifications are subject to change without notice.
Featured machines in photos may include additional equipment.
See your Caterpillar dealer for available options.

AEHQ5624-01 (1-07)

Replaces AEHQ5624

CAT, CATERPILLAR, their respective logos, "Caterpillar Yellow" and the
POWER EDGE trade dress, as well as corporate and product identity used herein,
are trademarks of Caterpillar and may not be used without permission.

