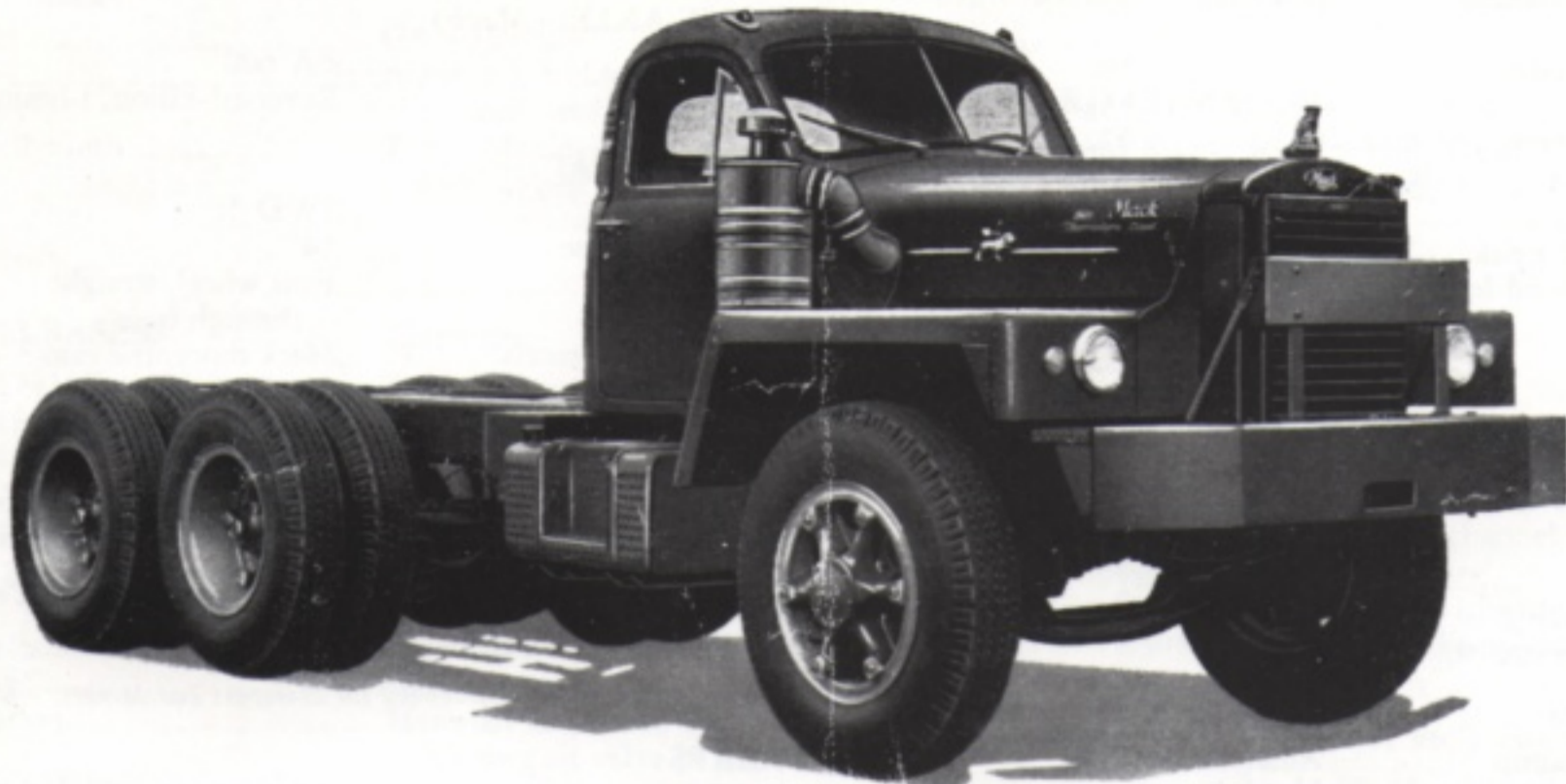




B-81SX & B-813SX



SIX-WHEEL • DIESEL • TRUCK

GRATIFYING PROFITS and long trouble-free life are provided in these ruggedly designed, diesel powered six-wheel trucks. They are capable of successfully adjusting to the varying demands of speed and strength in heavy-duty, off-highway, dumper, mixer, logging, oil field and carry-all tractor operations.

ABUNDANT POWER for severe conditions and rapid acceleration when required is supplied by Mack's naturally aspirated or turbo-charged Thermodyne diesel. Producing 170 or 205 horsepower, Mack's diesel engines are famous for their economy of operation.

UNMATCHED ADAPTABILITY and dependability is assured by a wide selection of all-new, all-Mack component equipment. The already famous 20-speed, Quadruplex transmission offers a wider range of speed steps than is possible with the customary combination of transmission and auxiliary. A five or ten-speed and auxiliary transmission is available for oil field work.

DRIVING COMFORT is assured in Mack's newly styled cab providing ample head room, elbow room and leg room for the biggest driver. Features include an easily entered driver's position, fully adjustable driver's seat and a convenient arrangement of controls.

MODELS B-81SX & B-813SX

STANDARD EQUIPMENT (Cont'd.)

WHEELS:

TypeCast, spoke

STEERING GEAR:

ModelSG 26
 TypeWorm and roller
 Ratio28.4
 Steering wheel, diameter.....22"

CAB: (Mack)

ModelCA 30
 TypeAll metal, welded, unified
 cab and cowl
 Overall width70 $\frac{5}{8}$ " Maximum
 (67" at belt rail)

INSTRUMENT PANEL GAUGES: Tachometer single-hand type, speedometer, ammeter; air pressure, fuel, temperature and lube oil pressure gauges—all mounted on removable panel. Engine stop controls; throttle control.

CHASSIS EQUIPMENT: Painting in synthetic enamel (Mack green, red, yellow, blue, orange or black); Military type steel fenders; channel type front bumper; front tow pin; radiator guard; sealed-beam headlights; combination stop and tail light, electric horn; defroster nozzles; automatic radiator shutters; low air pressure buzzer type indicator; dual air-actuated windshield wipers, single motor; sun visor, left side; rim lug wrench or disc wheel wrench and handle.

STANDARD CHASSIS WEIGHT, (lbs.):

B-81SX: Front 8,115; Rear 9,550; Total 17,665
 B-813SX: Front 8,165; Rear 9,550; Total 17,715

OPTIONAL EQUIPMENT

WHEELBASES:

*174 $\frac{1}{2}$ "	Platform:	168"
**186 $\frac{1}{2}$ "		192"
199 $\frac{1}{2}$ "		216"
212 $\frac{1}{2}$ "		240"
#303 $\frac{1}{2}$ "		288"

AIR STARTING SYSTEM:

MakeIngersoll-Rand
 Rating10 horsepower
 ActuationManually controlled quick
 opening air valve in cab

TRANSMISSIONS: (Mack)

TR 7205-speed, with Auxiliary
 TRD 72010-speed, two-lever
 Duplex with Aux.

Additional option: TRQ 720 with R.H. & L.H. P.T.O. openings in compound case.

AUXILIARY TRANSMISSION:

(with TR 720 or TRD 720 only)

ModelB-L 8031 C
 Type3-speed, with power tower

BOGIE: (Mack)

#ModelSWD 59
 Bogie wheelbase54"
 DriveFour wheel, straight through
 Inter-axle differentialMack concentric cam
 and plunger Power Divider
 CarriersCRDP 95 & CRD 96
 †Ratios8.15, 9.02, 10.57, 11.80
 SpringsSee standard

†Ratio 9.02 or 8.15 recommended for Dumpers and Mixers.

SPRINGS: (Heavy Duty)

Location	#Rear	††Rear	#Front
Size	54" x 5"		51 $\frac{5}{8}$ " x 31 $\frac{1}{2}$ "
Leaf Thickness	1"	1 $\frac{1}{8}$ "	3 @ 0.401"
			14 @ 0.360"
No. of Leaves	Ten	Nine	Seventeen
Shot peening, tension side	All leaves		Main, 2nd & 3rd

††Special extra heavy duty rear springs obligatory with SWD 59 in Oil Field Service.

FRAME:

No. of cross-members
 and type, 174 $\frac{1}{2}$ " WB.....Two channel and one I-beam
 186 $\frac{1}{2}$ " WB.....Three channel and one I-beam
 199 $\frac{1}{2}$ ", 212 $\frac{1}{2}$ " and
 303 $\frac{1}{2}$ " WB.....Four channel and one I-beam
 Frame Reinforcement
 199 $\frac{1}{2}$ " and 212 $\frac{1}{2}$ " WB..... $\frac{1}{4}$ " Fishplate
 #303 $\frac{1}{2}$ " WB..... $\frac{3}{8}$ " Fishplate (obligatory)

TIRES: (Overall width exceeds 96") Highway Tread

Size	11.00-24	*12.00-24	†13.00-24
Ply	12 P	14 P	16 P
Rims	8.0	8.5	8.5

* Available with SWD 59 only.

† Available Single Front only (only with 12.00-24 rear), recommended for Oil Field Service.

WHEELS:

TypeSteel Budd Disc
 (12.00 & 13.00 disc wheels have 1" studs, 13-3/16" bolt circle.)

FUEL TANK:

TypeStep
 Capacity50 gallons
 LocationLeft side

CHASSIS EQUIPMENT: Power divider lock-out; Tachograph with 24 hour chart (in place of Tachometer); Hubometer, front left wheel; Mack linkage type, hydraulic power steering; full trailer brake and electrical connections including shut-off valves (no hose or cable; either hand control valve (for trailer brakes) or hand control valve, non-metering (for chassis rear brakes); Sealco drain valve; front wheel brake limiting valve; exhaust brake; front power take-off mixer drive arrangement 25,000 B.T.U. hot water cab heater with defrosters; vertical exhaust; air horn, twin; extra stop-tail light; I.C.C. lights; Bostrom driver seat with shock absorber; turn signals, front, one each side; West Coast type mirrors, enamel finish, one each side; spare rim or spare disc wheel; 8- or 12-ton jack.

B-81SX: Lube oil filters; Luberfiner 272C and Purolator full-flow in place of standard.

* Shortest available wheelbase for 5-speed transmission with B-L auxiliary installation.

** Shortest available wheelbase for 10-speed transmission with B-L auxiliary installation.

Recommended for Oil Field Service.

MODELS B-81SX & B-813SX

STANDARD EQUIPMENT

Condensed Specifications

WHEELBASE: 165½"	Platform: 144"	
ENGINE, (Diesel):	B-81SX	B-813SX
Model	END 673	ENDT 673
Make	Mack	Mack
Type, Thermodyne	Naturally aspirated	Turbocharged
Number of cylinders.....	Six	Six
Bore and stroke.....	47/8" x 6"	47/8" x 6"
Piston displacement, cu. in.	672	672
Brake horsepower @ 2100 r.p.m. (gov.)	170	205
Max. torque @ r.p.m.	1200	1400-1600
Pound-feet	480	560
Lube oil filter	Luberfiner 500C	Luberfiner 272C and Purolator full-flow Ross
Oil cooler	—	

CLUTCH: (Mack)

Model	CL 50, with clutch brake
Type	Two-plate, dry
Outside dia., facing	14"
Area of engagement, sq. in.	416

FUEL SYSTEM:

Fuel injection pump	American Bosch
Type	Multiple unit
Drive	Geared from camshaft gear
Mounting	Integral flange
Timing (END 673)	Synchrovance
Nozzles	Four-hole spray
Tank capacity & location	40 gal., step, right side

COOLING SYSTEM:

Radiator, type	Continuous-finned, flat tube
Frontal area, sq. in.	821
Thermostat	Bellows
Water pump	Centrifugal type
Fan, material	Pressed steel
Type	Asymmetrical
Water capacity of system	53 quarts

ELECTRIC SYSTEM:

Voltage and capacity.....	12 V., 50 Amp., with 24 Volt starting
Generator, make	Delco-Remy
Starting motor, make	Delco-Remy
Battery, make	Exide or Auto-Lite
Number required	Four (6V)
Location	Two—left side, two— right side

TRANSMISSION: (Mack)

Model	TRQ 720
Type	Twenty speed, two-lever, Quadruplex

R A T I O S

Shift	High Split	Main	Low Split	Low Low
5th	0.66	0.78	0.91	1.95
4th	0.85	1.00	1.17	2.50
3rd	1.49	1.75	2.06	4.39
2nd	2.65	3.12	3.66	7.82
1st	4.62	5.45	6.39	13.63
Rev.	4.62	5.45	6.39	13.63

DRIVESHAFTS:

Location	Front	Rear	Inter-Axle
Make (Spicer), size	1800	1800	1600
Joint, type	Yoke	Yoke	Yoke
Tube, dia.	3½"	3½"	3½"
Wall thickness	0.188"	0.188"	0.156"

FRONT AXLE: (Mack)

Model	FA 600
Type	Reversed-Elliott, I-beam

BOGIE: (Mack)

Model	SWD 58
Bogie wheelbase	54"
Drive	Four wheel, straight through type
Inter-axle differential	Mack concentric cam and plunger type Power Divider
Housing construction	One piece banjo, steel casting
Axle shafts, material	Chromium-molybdenum steel, heat-treated
Carriers	CRDP 92 & CRD 93
*Ratios	7.32, 8.15, 9.02

* Ratio 9.02 or 8.15 recommended for Dumpers and Mixers.

BRAKES:

Actuation	Air
Front, size	17¼" x 5" x ¾" (355)
Rear, size	16½" x 6" x ¾" (828)
Hand, size	12" x 5" x ⅜" (139)
Compressor	Tu-Flo 500 (12 cu. ft.)
Reservoir capacity	3480 cu. in. (total)

FRAME:

Material	Chrome-manganese steel, heat-treated
Side-members, size	105/8" x 3¼" x 5/16" with gusset structure over bogie axles
Reinforcement	¼" inside channel
Section modulus	24.8, with inside channel
No. of cross-members & type....	Two channel and one I-beam

SPRINGS:

Location	Front	Rear
Type	Semi-elliptic	Semi-elliptic (inverted)
Size	515/8" x 3½"	54" x 5"
Leaf Thickness	401" .360"	0.788"
No. of Leaves	3	11
Shot-peening of leaves.....	Main, 2nd & 3rd	All
Suspension	Slipper front end, fixed pin rear	Rubber Shock Insulators

SHOCK ABSORBERS—FRONT:

Type	Houdaille, rotary-hydraulic
------------	-----------------------------

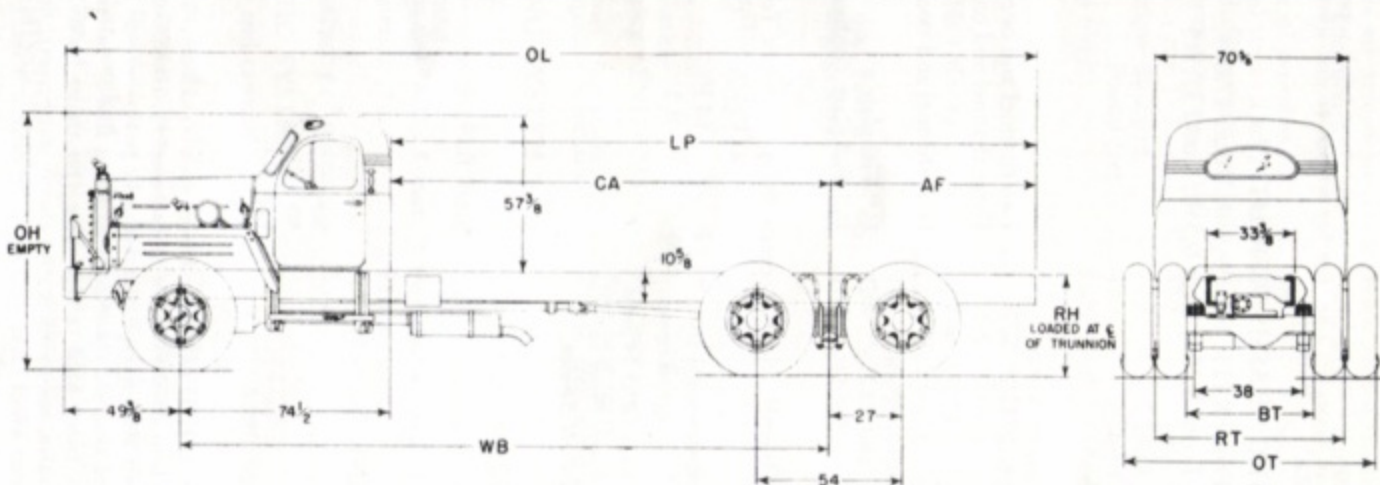
TIRES: (Overall width exceeds 96")

Size	*11.00-22 (12P) Highway Tread
Rims	8.0

* Available with SWD 58 only

MODELS B-81SX & B-813SX

CHASSIS DIAGRAM



WB	LP	CA	AF	OL
165½	144	91	53	267¾
174½	168	100	68	291¾
186½	192	112	80	315¾
199½	216	125	91	339¾
212½	240	138	102	363¾
303½	288	229	59	411¾

Chassis dimensions are in inches and are for standard chassis unless otherwise denoted.

TIRE SIZE †(Highway Tread)	BOGIE	OH	RH	OT	RT	BT
		Approx. Loaded	Spoke Wheels			
11.00-22	SWD58	98¾	41¼	96½	71¾	46¼
11.00-24	SWD58	97¾	42¼	96¾	72	47½
	SWD59	99¾	42¼	97¾	72¼	47¾
12.00-24	SWD59	100½	42¼	104¾	77	49¾
13.00-24	—	100½	Available Front Only			

† Overall width exceeds 96".

Frame heights may vary ½ inch.

WB	*TURNING CIRCLE DIAMETER (Approx.)	
	Left Turn	Right Turn
165½	70	66
174½	72	68
186½	76	71
199½	79	74
212½	83	78
303½	119	112

* Measured in feet to outer edge of tire.

Represented by:



MACK TRUCKS, INC.

Plainfield, N. J. (U. S. A.)

In Canada: MACK TRUCKS OF CANADA, LTD.

181 Eglinton Avenue, East
Toronto, Ontario, Canada

There being no annual series models of MACK products, refinements and improvements are effected whenever sound development and thorough trial prove them to be advantageous. The right is therefore reserved to change specifications or prices without notice. Illustrations are not necessarily a representation of standard specifications.