



SDCY90K8H4

Empty Container Handler



KEY FEATURES

- Cummins Model QSB 6.7 Tier 4F Engine
- Clark Fixed-Shaft Power Shift Transmission
- Kessler Heavy Duty Drive Axle
- Power-on-Demand Load Sensing Hydraulics
- Intelligent Rollover Protection System

20' - 40'
International Standard
Containers

Max Load
19,850 lbs

Max Hoisting Height
70'2"

SDCY90K8H4 Dimensions & Specifications

OVERALL DIMENSIONS

	Standard	Metric
Overall length	22'8"	6900 mm
Overall height	15'7"	12,315 mm
Wheelbase	14'9"	4550 mm
Load center	4'	1220 mm
Height of mast lowered / extended	40'5"/71'4"	12,315 mm/21,740 mm
Min. ground clearance	1'1"	320 mm
Min. lifting height under spreader	7'3"	2250 mm
Max. lifting height under spreader	69'9"	21,250 mm
Overall width	19'10" - 39'11"	6,038 mm ~12,170 mm
Front wheel width	10'9"	3280 mm
Rear wheel width	7'1"	2150 mm
Mast tilt forward / backward		2°/4°
Min. turning radius	19'8"	6000 mm
Min. aisle width for 20' container	32'10"	10,000 mm
Min. aisle width for 40' container	45'11"	14,000 mm

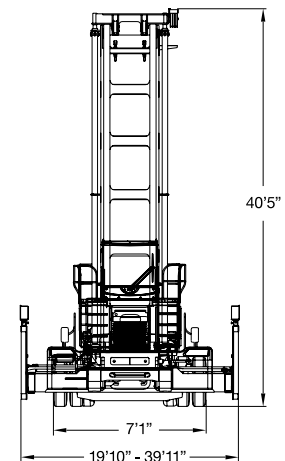
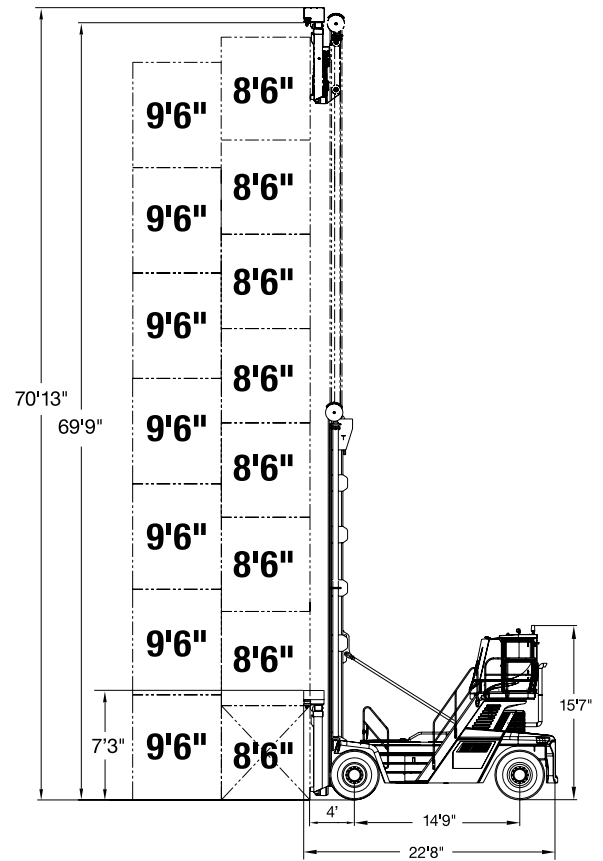
MACHINE PARAMETERS

Manufacturer / model		CUMMINS QSB 6.7	
Engine	Standard	Metric	
Rated power output	225hp	168/2200 kW/rpm	
Torque - max	770 ft-lbs	1044/1500 Nm/rpm	
EPA tier compliance		Tier 4 final	

Transmission manufacturer / model	CLARK 13.7HR32000
Drive axle manufacturer / model	KESSLER D81 PL488

Manufacturer / model		SDJ90H	
Spreader	Standard	Metric	
Side shift range	24"	±600 mm	
Application		20'/40' container	

Tire size	14.00-24 28PR	
Service weight	88,185 lbs	41 t
Rated load capacity	19,842 lbs	9 t
Stacking height	8 (8'6") / 7 (9'6")	
Lifting speed (without load/ with load)	24"/22" per second	600/550 mm/s
Lowering speed (without load/ with load)	22"/24" per second	550/600 mm/s
Travel speed (without load/ with load)	17.4/16 mph	28/26 km/h
Gradeability (without load/ with load)	30/22%	30/22%



SANY America Inc.

318 Cooper Circle | Peachtree City, GA 30269
T: 678-251-2810 | F: 770-632-7820

www.sanyamerica.com

