



SCAIP

SPX-960

Max Lift Capacity	97,000 kg / 213,845 lb
Operating Weight	61,000 kg / 134,500 lb
Net Flywheel Power	324 kw / 440 HP



SPX-960 PIPELAYER

TIER 3 ENGINE

All SPX-Series pipelayers are built with Caterpillar Tier 3 engines.

HYDROSTATIC SYSTEM

State-of-the-art hydrostatic system insures safety and reliability and is especially efficient when working on steep grades.

HYDRAULIC KIT

The same kit used in the conversion of Caterpillar, Komatsu and Fiat pipelayers is used on this machine.

SAFETY

Safety has always been a big focus for us. Some of the safety features are our new ATP-Plus anti-tipping system, electronic boom kick-out, anti-two block and free fall.

ROPS/FOPS

Optional ROPS/FOPS is designed in such a way to allow the operator a clear view of the top of the boom and the load.

COUNTERWEIGHT RACK

New design which makes the counterweight system easy to assemble and disassemble.

GENERAL SPECIFICATIONS

ENGINE

Type	Caterpillar
Model	C13 ACERT
Net flywheel power (DIN 6270-SAEJ 1349)	440 HP - 324 kW
Governed speed	2,200 rpm
Displacement	12.5 L - 763 cu in

HYDRAULIC SYSTEM

Main pumps	(Bosch-Rexroth) 4 independent variable pumps
Maximum capacity	2x450 lt/min - 2x119 U.S. gal/min
Maximum operating pressure	260 bar - 5,800 p.s.i.
Service pumps	1 tandem gear type
Maximum capacity	50 lt/min - 13 U.S. gal/min

TRANSMISSION

Type	Hydrostatic closed circuit
Brakes	(4) Integrated negative control
Final drives	Epicycloidal oil soaked
Maximum speed:	
- 1 speed	1.7 km/h - 1 miles/h
- 2 speed	2.6 km/h - 1.6 miles/h
- 3 speed	7.3 km/h - 4.5 miles/h

CONTROLS

Type	Twin pilot operated
Safety	Emergency shut-off

TSSystem: twin steering system to provide with other two levers, to drive the track independently in order to guarantee small and precise movements.

TRACK FRAME

Hard track frame with sealed and lubricated chain D9H type	
Number of bottom rollers	9+9
Number of carrying rollers	2+2
Gauge	2.6 m - 8.5 ft
Length of track on the ground	4.08 m - 13.4 ft
Standard shoes width	914 mm - 36" in
Ground contact area	73440 cm ² - 11382 sq in
Option shoes width	1015 mm - 40 in
Ground contact area	82824 cm ² - 12837 sq in

FLUID CAPACITIES

Fuel tank	670 liters - 176 U.S. gal
Hydraulic system circuit	330 liters - 87 U.S. gal
Cooling system	65 liters - 17.2 U.S. gal
Engine oil	34 liters - 9 U.S. gal
Final drive each	50+50 liters - 13,2+13,2 U.S. gal

ELECTRIC SYSTEM

Operating voltage	24 V
Maintenance free supplied batteries	2
Capacity (total)	220 Ah
Starter capacity	7.5 Kw
Alternator	55 A

REAR WINCH AVAILABLE

Max line pull	450 kN - 99,206 lb
Max line speed	0-30 m/min 0-98.4 ft/min
Cable size	36 mm - 1.4 in
Weight	2,800 kg - 6,173 lb

DIMENSIONS

Drum diameter	530 mm - 20.9 in
Flange diameter	890 mm - 35 in
Drum Length	510 mm - 20 in

PIPELAYING EQUIPMENT

HYDRAULIC WINCHES

Type	Hydraulic controlled drums (reversible.) Driven by variable flow hydraulic pump and control valve block in open circuit.
Final drive	Compact hydrostatic drive unit, three-stage planetary gear
Brakes	Integrated multiple disk brake, spring applied hydraulic release

	Hook	Boom
Drum diameter	390 mm/15.3 in	390 mm/15.3 in
Flange diameter	590 mm/23.2 in	530 mm/20.8 in
Drum length	360 mm/14.1 in	360 mm/14.1 in
Capacity (19 mm - 3/4in)	136 m/446 ft	105 m/344 ft
Wire rope installed	120 m/394 ft	70 m/275 ft
Hook speed	0-16 m/min - 0-52 ft/min	

BOOM

Type	Std. 28 ft / 8.5 m welded box square section Optional 30 ft / 9.1 m welded box square section
Diameter wire rope	19 mm - 3/4 in
Minimum breaking strength rope	323 kN - 72,530 lb
Part load line	8
Part boom line	5

ADJUSTABLE COUNTERWEIGHTS

QD-CS: quick-disconnected counterweight system. For the possibility of disassembly in a short time (all the counterweight pack.)

Removable counterweight	18 leaves 600 kg - 1,300 lb each
Total weight extendable	13,500 kg - 29,700 lb

OPTIONAL

Closed cabin	
Air conditioning	
Rear winch	
Extra long boom	

WINCH SPECIFICATIONS

MAIN PUMP

Type	Bosch-Rexroth axial piston variable displacement pump
------	---

VALVES

Type	Bosch load-sensing mobile control block proportional directional valves
------	---

Max capacity	286 liters/min 75.5 U.S. gal/min
--------------	----------------------------------

Working pressure	320 bar - 4,642 p.s.i.
------------------	------------------------

CONTROL

Type	<ul style="list-style-type: none"> Pilot units for remote control of winch motors Progressive and sensitive operations
------	--

SERVICE PUMP

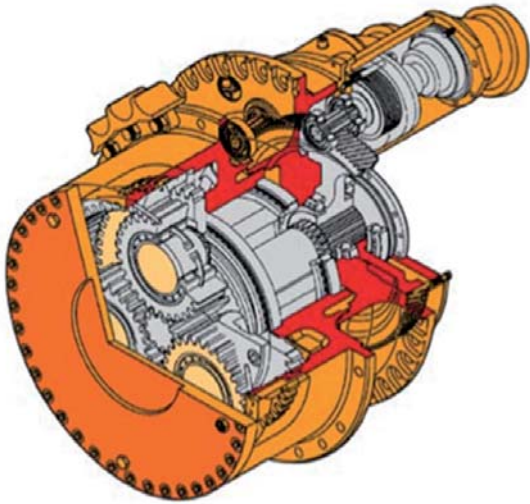
Type	Gear pump
Max capacity	10 liters.min 2.6 U.S. gal/min
Working pressure	30 bar - 435 p.s.i.

FEATURES

- CE approved design
- Planetary gear
- Automatic negative brakes
- Anti-friction bearings

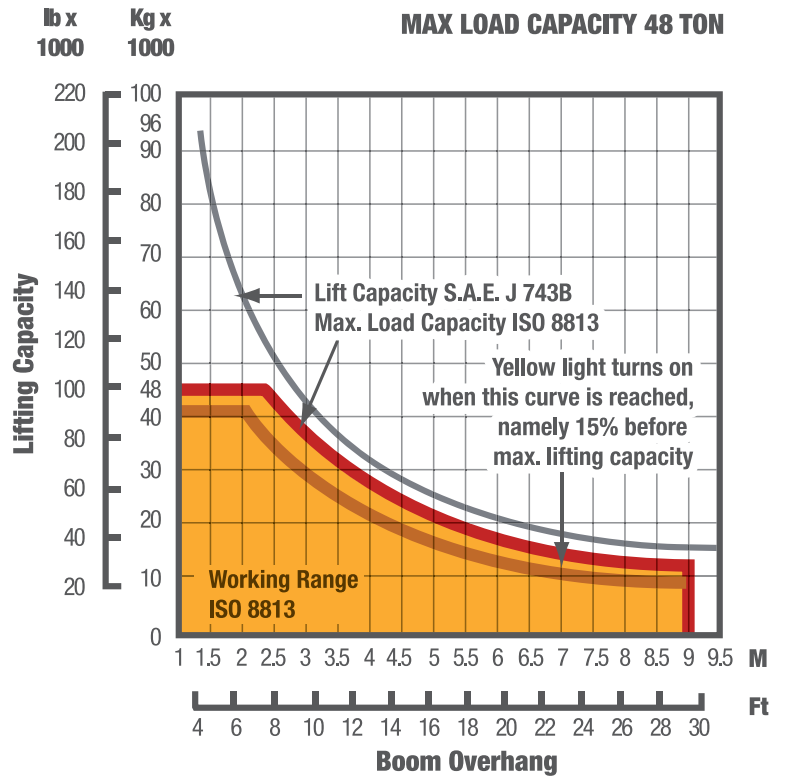


LIFTING CAPACITY (28'/8.53 m Boom)



WINCH SPECIFICATIONS

Scaip has been manufacturing pipelayer conversion packages for tractors branded The idea behind the engineering of these packages was to build safer and more user-friendly machines. Around six years ago.





HYDRAULIC SYSTEM OPTIONS

ELECTRONIC OVER HYDRAULIC

ANTI-TIPPING SYSTEM

Prevents tipping by calculating the maximum load that can be lifted.

FREEFALL SYSTEM

When the button is engaged, the load free-falls and then immediately stops when the button is released.

BOOM KICK-OUT SYSTEM

This system will ensure you will never bend another boom.

ANTI-TWO BLOCK

Sets a minimum distance between the top block and the hook block, preventing collisions between them.

HYDRAULIC OVER HYDRAULIC

FREEFALL SYSTEM, BOOM KICK-OUT SYSTEM AND ANTI-TWO BLOCK



STATE OF THE ART CABIN

STANDARD DISPLAY

CONTROL

With only 2 joysticks, the operator can operate both winches, increase/decrease the engine's throttle, and control the machine's travel.

TRANSMISSION PILOT LEVERS

There are 2 extra pilot levers for the transmission, which can assist the operator in making precise maneuvers, such as turning in a steep hill or making pinpoint movements to couple the pipes.

LCD DISPLAY

It displays overhang, weight and LAS information

VISIO DISPLAY (OPTIONAL)

CONTROL

With only 2 joysticks, the operator can operate both winches, increase/decrease the engine's throttle, and control the machine's travel.

TRANSMISSION PILOT LEVERS

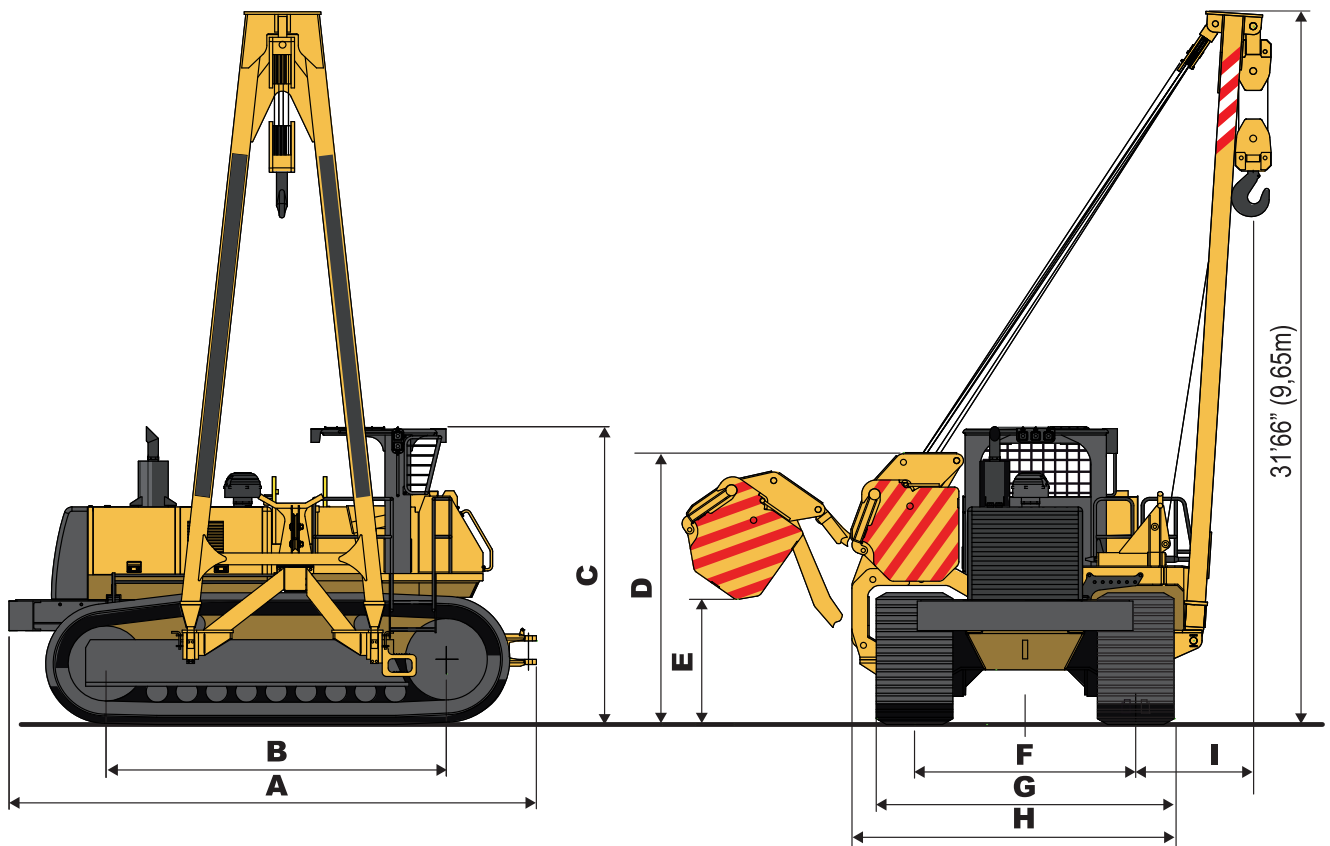
There are 2 extra pilot levers for the transmission, which can assist the operator in making precise maneuvers, such as turning in a steep hill or making pinpoint movements to couple the pipes.

LCD DISPLAY

It displays relevant information in a beautiful, easy to read, graphical interface. It can also be adjusted for day or night viewing.



DIMENSIONS



	Feet	Meters
A Overall length	20'3" ft	6,2 m
B Length of tracks on ground	13' ft	4 m
C Height to top of ROPS	11'5" ft	3,5 m
D Height to top of counterweight (retracted)	10'5" ft	3,2 m
E Height to bottom of counterweight (extended)	5' ft	1,5 m
F Track gauge	8'5" ft	2,6 m
G Width of tracks		
36" standard shoes	11'6" ft	3,5 m
40" optional shoes	11'10" ft	3,6 m
H Shipping width (left frame removed)		
36" standard shoes	12'4" ft	3,76 m
40" optional shoes	12'6" ft	3,81 m
I Boom overhang		
Minimum	4' ft	1,22 m
Maximum	28' ft	8,5 m

AVAILABLE MODEL



SPX-460 | 46 - Ton



SPX-660 | 66 - Ton



SPX-960 | 96 - Ton



SCAIP Srl
Via Roma, 18 • 43126 San Pancrazio Parma Italy
Phone +39 0521 671288 • Fax +39 0521 673295
Email: info@scaip-srl.it • www.scaip-srl.it