



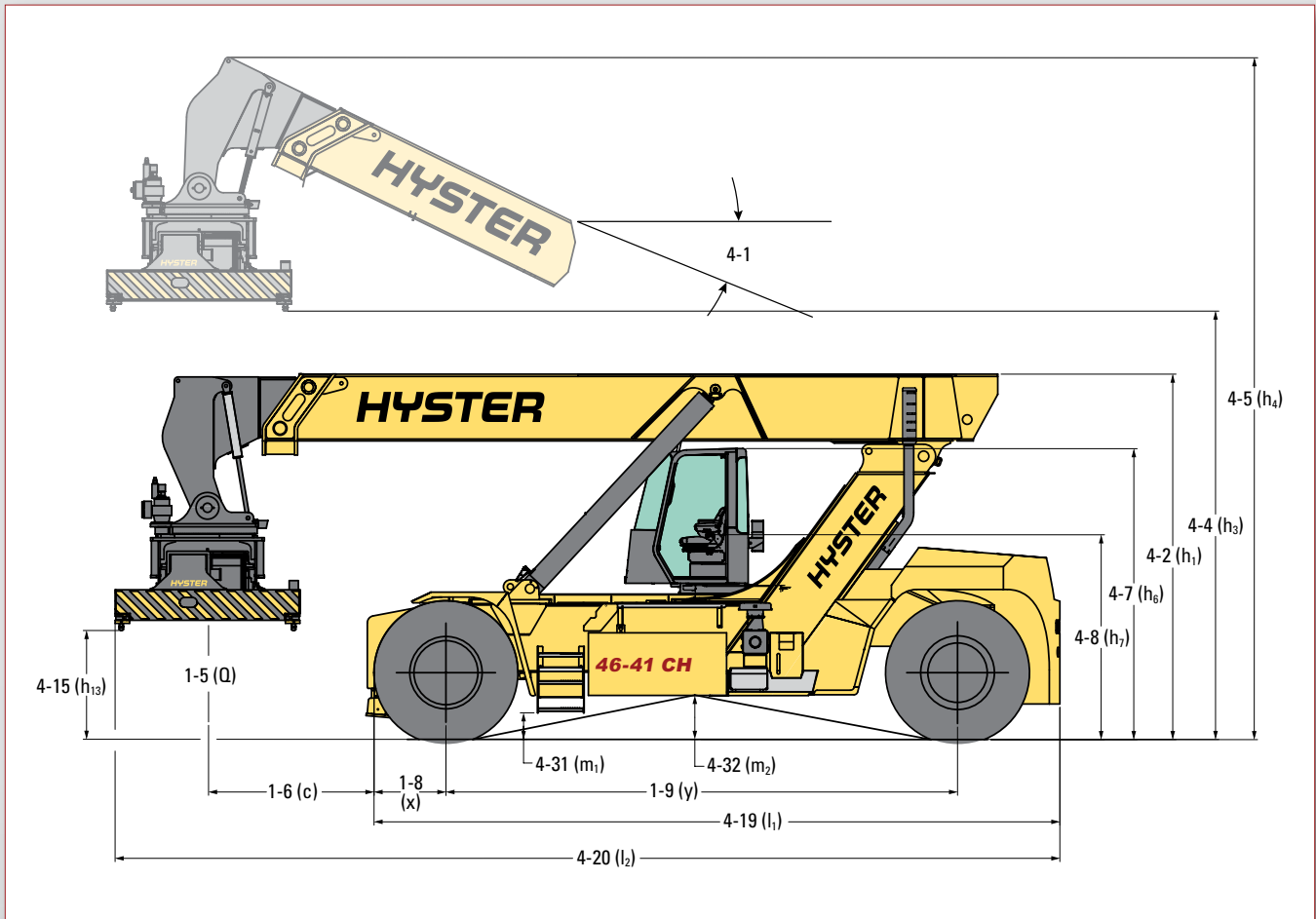
**STRONG PARTNERS.  
TOUGH TRUCKS.™**



# RS46 SERIES TECHNICAL GUIDE

[WWW.HYSTER.COM](http://WWW.HYSTER.COM)

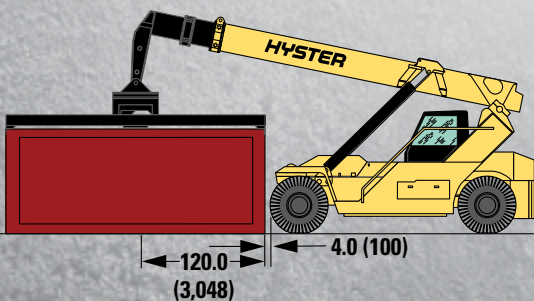
## ➤ DIMENSIONS



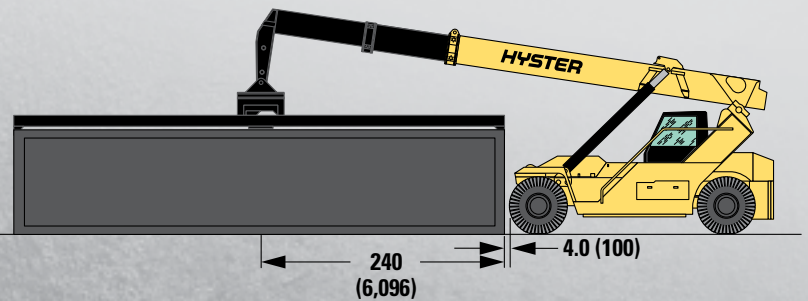
### MAXIMUM CAPACITY CONTAINER PICKING END TO END

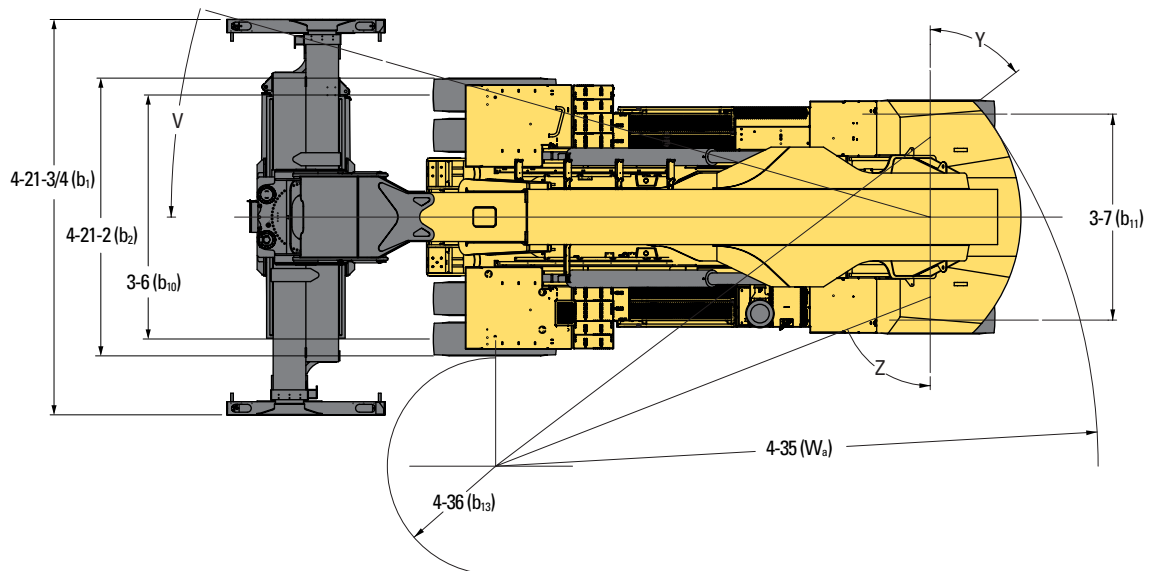
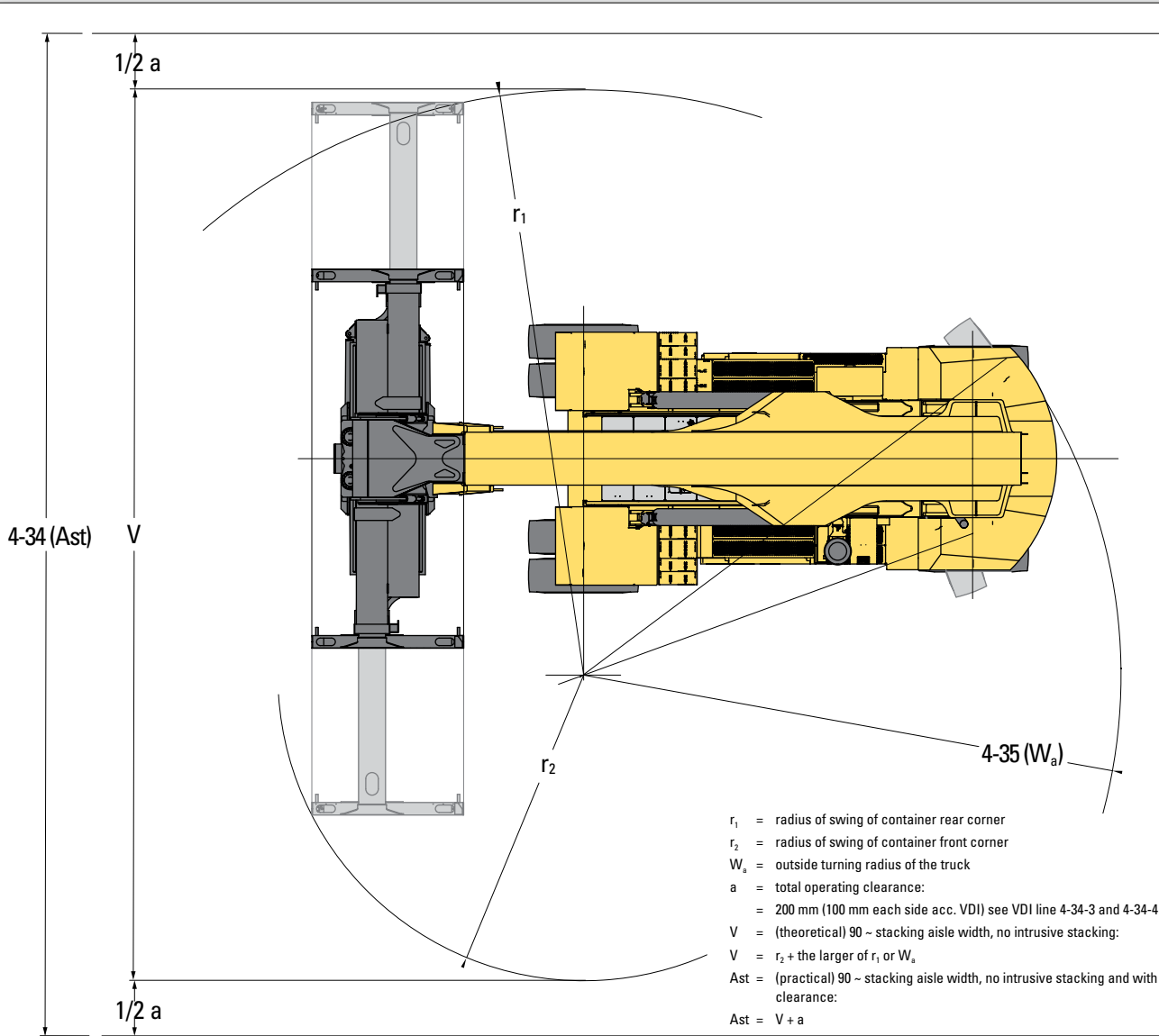
MODEL	20'		40'	
	lb	kg	lb	kg
RS46-29	70,500	32,000	30,900	14,000
RS46-33	77,200	35,000	35,300	16,000
RS46-36	92,600	42,000	44,100	20,000
RS46-41S	99,000	44,900	58,000	26,300
RS46-41L	99,000	44,900	58,000	26,300
RS46-41LS	99,000	44,900	67,000	30,300
RS46-41XLS	99,000	44,900	67,000	30,300

#### 20'-0 END ON LIFTING CAPACITIES



#### 40'-0 END ON LIFTING CAPACITIES







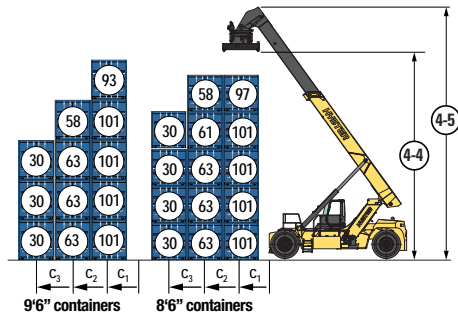
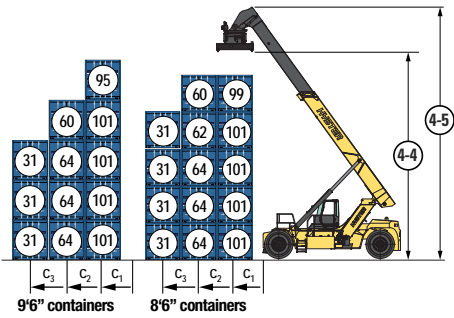
# RATED CAPACITIES AND STACKING HEIGHTS

(shown in 1,000 lbs.)

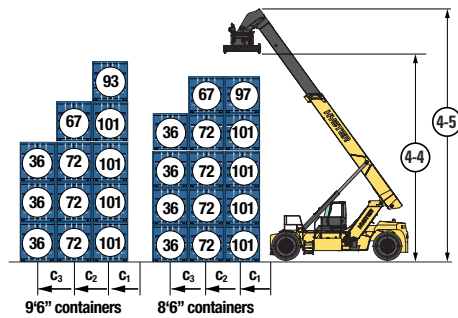
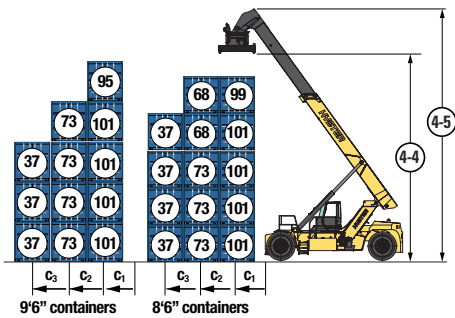
## MECHANICAL PILE SLOPE

## POWERED PILE SLOPE

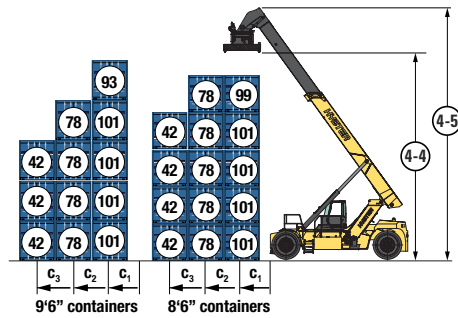
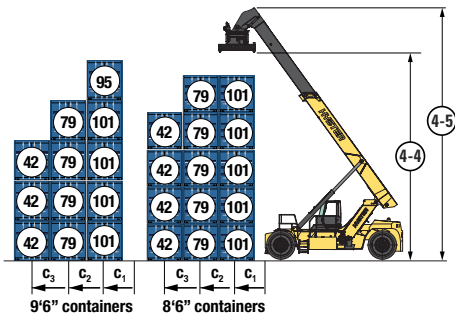
### RS 46-29 CH CONTAINER SPREADER



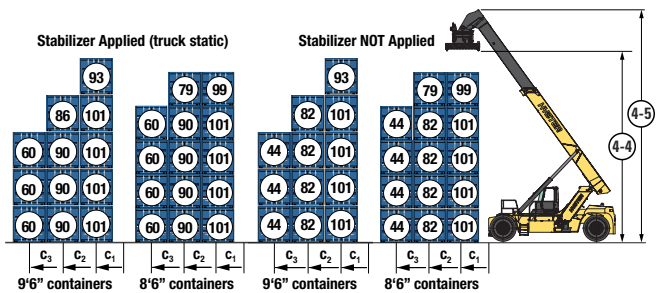
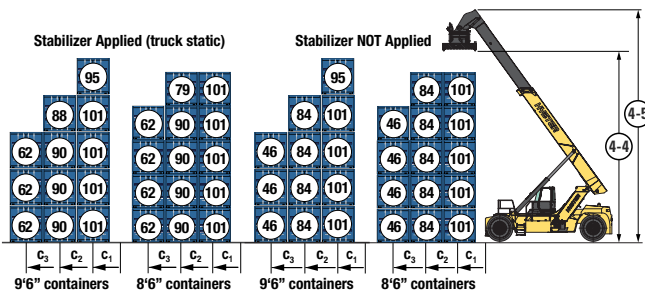
### RS 46-33 CH CONTAINER SPREADER



### RS 46-36 CH CONTAINER SPREADER



### RS 46-41S CH CONTAINER SPREADER



C <sub>1</sub>	C <sub>2</sub>	C <sub>3</sub>
73"	150"	249"
1865mm	3815mm	6315mm

Note: All load centers c<sub>1</sub>, c<sub>2</sub>, c<sub>3</sub> are taken from the front face of the (front) tires, deduct 3.9" for load centers taken from the front face of the stabilizer.

# RATED CAPACITIES AND STACKING HEIGHTS

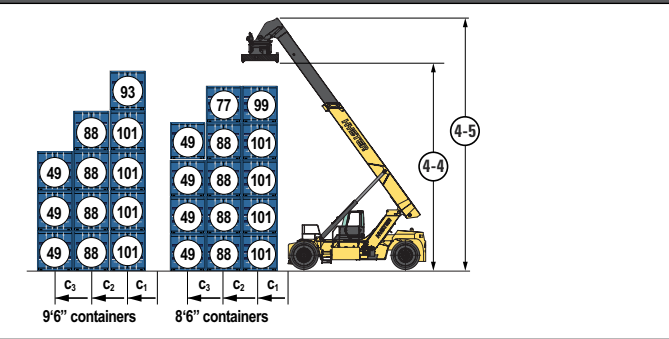
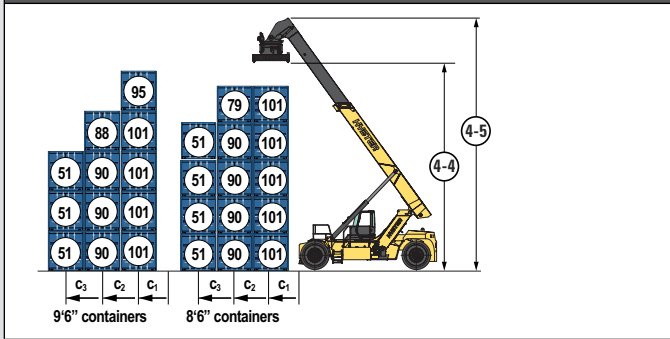
(shown in 1,000 lbs.)



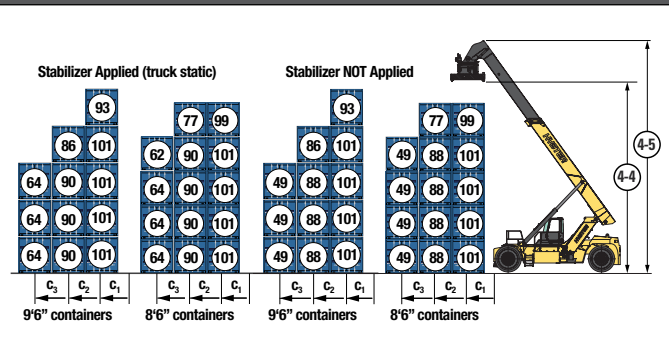
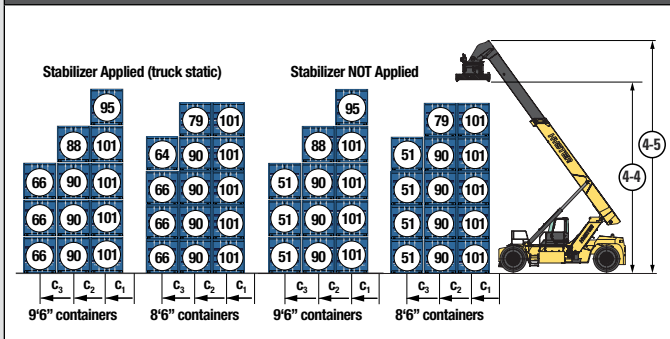
## MECHANICAL PILE SLOPE

## POWERED PILE SLOPE

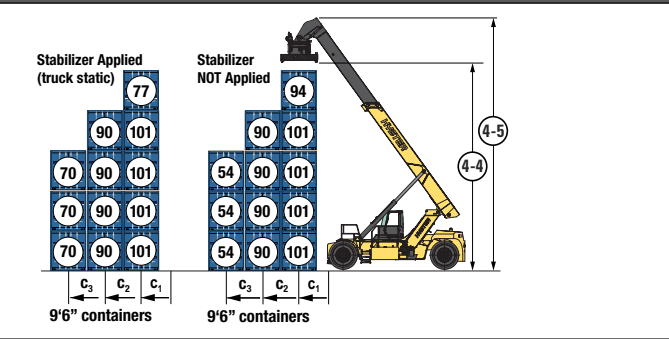
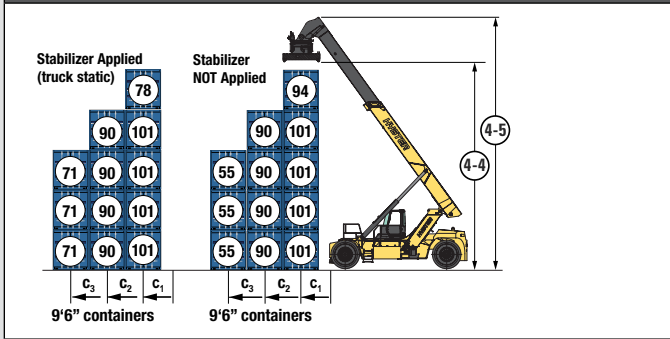
### RS 46-41L CH CONTAINER SPREADER



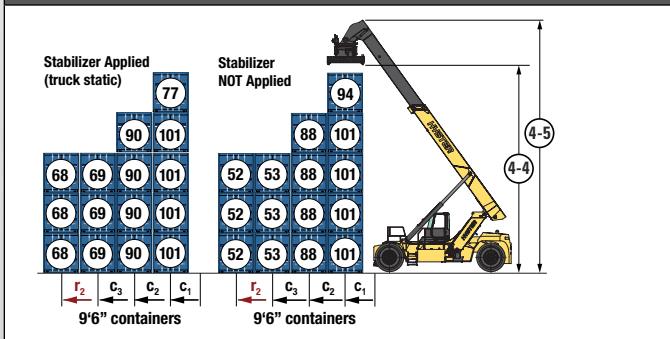
### RS 46-41LS CH CONTAINER SPREADER



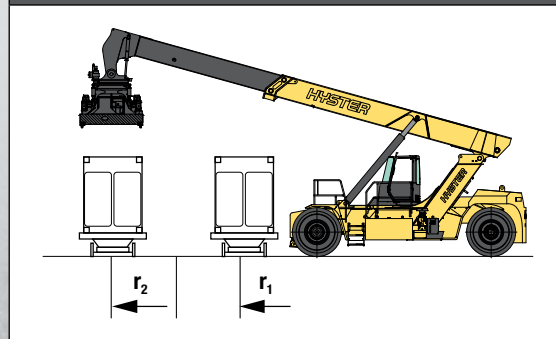
### RS 46-41XLS CH CONTAINER SPREADER



### RS 46-41XLS CH CONTAINER SPREADER (WTP WITH POWERED PILE SLOPE)



### HANDLING IN SECOND RAIL



C <sub>1</sub>	C <sub>2</sub>	C <sub>3</sub>
73"	150"	249"
1865mm	3815mm	6315mm

r <sub>1</sub>	r <sub>2</sub>
73"	252"
1865mm	6400mm

Note: All load centers c<sub>1</sub>, c<sub>2</sub>, c<sub>3</sub> are taken from the front face of the (front) tires, deduct 3.9" for load centers taken from the front face of the stabilizer.

# RS46-29 / RS46-33 / RS46-36 SPECIFICATIONS

		HYSTER				HYSTER				HYSTER								
		RS46-29 CH				RS46-33 CH				RS46-36 CH								
		Diesel				Diesel				Diesel								
		Seated				Seated				Seated								
GENERAL	1-1	Manufacturer																
	1-2	Model designation																
	1-3	Powertrain / drivetrain																
	1-4	Operator type																
	1-5-1	Load capacity at load center distance $c_1$ without/stabilizer (1)	$Q_1$	lbs	kg	101,413	46,000	n/a	n/a	101,413	46,000	n/a	n/a	101,413	46,000	n/a	n/a	
	1-5-2	Load capacity at load center distance $c_2$ without/stabilizer (1)	$Q_2$	lbs	kg	63,934	29,000	n/a	n/a	72,753	33,000	n/a	n/a	79,366	36,000	n/a	n/a	
	1-5-3	Load capacity at load center distance $c_3$ without/stabilizer (1)	$Q_3$	lbs	kg	30,865	14,000	n/a	n/a	37,479	17,000	n/a	n/a	41,888	19,000	n/a	n/a	
	1-6-1	Load center distance $c_1$ (2)	$c_1$	in	mm	73	1,865			73	1,865			73	1,865			
	1-6-2	Load center distance $c_2$ (2)	$c_2$	in	mm	150	3,815			150	3,815			150	3,815			
	1-6-3	Load center distance $c_3$ (2)	$c_3$	in	mm	249	6,315			249	6,315			249	6,315			
1-8	Load distance, ctr of drive axle to face of front tires/front of stabilizer	x	in	mm	33	835	n/a	n/a	33	835	n/a	n/a	37	930	n/a	n/a		
1-9	Wheelbase	y	in	mm	244	6,200			244	6,200			244	6,200				
1-10	Stacking height at first row (number x container height)	#	#	5 x 9' 6"				5 x 9' 6"				5 x 9' 6"						
WT.	2-1	Service weight		lbs	kg	151,017	68,500			159,174	72,200			174,827	79,300			
	2-2-1	Axle loading with load, front / rear at $c_1$		lbs	kg	223,439	101,350	28,991	13,150	222,887	101,100	37,699	17,100	227,517	103,200	48,722	22,100	
	2-3-1	Axle loading without load, front / rear at $c_1$		lbs	kg	77,823	35,300	73,193	33,200	77,162	35,000	82,012	37,200	80,469	36,500	94,358	42,800	
WHEELS	3-1	Tire type		Pneumatic				Pneumatic				Pneumatic						
	3-2	Tire size, front		18.00-25 40PR				18.00-25 40PR				18.00-33 36PR						
	3-3	Tire size, rear		18.00-25 40PR				18.00-25 40PR				18.00-33 36PR						
		Wheels, number front / rear (X = driven wheels)		x4 / 2				x4 / 2				x4 / 2						
	3-6	Tread, front		$b_{10}$	in	mm	146	3,703			146	3,703			146	3,703		
	3-7	Tread, rear		$b_{11}$	in	mm	120	3,060			120	3,060			120	3,060		
	4-1	Boom angle minimum / maximum		deg	deg	0 / 59				0 / 59				0 / 59				
4-2	Height of boom lowered		$h_1$	in	mm	185	4,700			185	4,700			189	4,795			
4-4-1	Lift height at load center $c_1$ (3)		$h_{3,1}$	in	mm	601	15,260			601	15,260			605	15,355			
4-4-2	Lift height at load center $c_2$ (3)		$h_{3,2}$	in	mm	545	13,850			545	13,850			549	13,945			
4-5	Height, boom extended		$h_4$	in	mm	713	18,110			713	18,110			717	18,205			
4-7	Height of overhead guard (cabin)		$h_6$	in	mm	146	3,720			146	3,720			150	3,815			
4-8	Seat height to SIP (4)		$h_7$	in	mm	101	2,555			101	2,555			104	2,650			
4-15	Height under Twistlock - lowered (3)		$h_{13}$	in	mm	53	1,345			53	1,345			57	1,440			
4-19	Overall length		$l_1$	in	mm	329	8,360			329	8,360			341	8,650			
4-20	Overall length including boom retracted		$l_2$	in	mm	467	11,873			467	11,873			475	12,073			
4-21-2	Overall width across all of truck		$b_2$	in	mm	165	4,200			165	4,200			165	4,200			
4-21-3	Overall width across spreader 20'		$b_{1,20}$	in	mm	240	6,100			240	6,100			240	6,100			
4-21-4	Overall width across spreader 40'		$b_{1,40}$	in	mm	480	12,200			480	12,200			480	12,200			
4-31	Ground clearance, lowest point		$m_1$	in	mm	11	285			11	285			12	304			
4-32	Ground clearance, center or wheelbase		$m_2$	in	mm	17	437			17	437			21	532			
4-34-3	Aisle width: 20' container (5)		$Ast_{20}$	in	mm	470	11,930			470	11,930			509	12,940			
4-34-4	Aisle width: 40' container (5)		$Ast_{40}$	in	mm	551	13,990			551	13,990			563	14,310			
4-35	Outside turning radius		$W_a$	in	mm	331	8,420			331	8,420			362	9,200			
4-36	Internal turning radius		$b_{13}$	in	mm	59	1,500			59	1,500			79	2,000			
		<b>PERFORMANCE</b>		<b>CUMMINS QSL9 TIER 4F ENGINE - TE 32</b>														
PERFORMANCE	5-1	Travel speed with / without load		mph	km/h	12.4	20	13.7	22	12.4	20	13.7	22	13.0	21	14.3	23	
	5-2	Lifting speed with / without load		ft/min	m/s	55	0.28	94	0.48	55	0.28	94	0.48	55	0.28	94	0.48	
	5-3	Lowering speed with / without load		ft/min	m/s	91	0.46	89	0.45	91	0.46	89	0.45	91	0.46	89	0.45	
	5-7	Gradeability - 1 mph   1.6 km/h with / without load (6)		%	%	26	26	29	29	25	25	28	28	23	23	26	26	
			<b>PERFORMANCE</b>		<b>CUMMINS QSM11 335HP TIER 3 ENGINE - TE 32</b>													
	5-1	Travel speed with / without load		mph	km/h	13.0	21	14.3	23	13.0	21	14.3	23	14.3	23	16.2	26	
	5-2	Lifting speed with / without load		ft/min	m/s	55	0.28	94	0.48	55	0.28	94	0.48	55	0.28	94	0.48	
	5-3	Lowering speed with / without load		ft/min	m/s	91	0.46	89	0.45	91	0.46	89	0.45	91	0.46	89	0.45	
	5-7	Gradeability - 1 mph   1.6 km/h with / without load (6)		%	%	22	22	26	26	22	22	26	26	22	22	26	26	
			<b>PERFORMANCE</b>		<b>QSM11 300HP TIER 3 ENGINE - TE 27</b>													
	5-1	Travel speed with / without load		mph	km/h	12.4	20	14.3	23	12.4	20	14.3	23	—	—	—	—	
	5-2	Lifting speed with / without load		ft/min	m/s	49	0.25	94	0.48	49	0.25	94	0.48	—	—	—	—	
	5-3	Lowering speed with / without load		ft/min	m/s	91	0.46	89	0.45	91	0.46	89	0.45	—	—	—	—	
	5-7	Gradeability - 1 mph   1.6 km/h with / without load (6)		%	%	22	22	26	26	22	22	26	26	—	—	—	—	

- Load capacities shown with mechanical pile slope (MPS) spreader. Deduction for using powered pile slope spreader is approx. 2,000 lbs. (900 kg)
- From face of front tires.
- With Mechanical Pile Slope (MPS). For optional Powered Pile Slope (PPS) function: deduct 12.2 in (310 mm).
- Full suspension seat in depressed position.
- Spreader at 315 in (8.0 m) high, central above front axle; container 0 in/mm in front of tires; includes 2 x 4 in (100 mm) clearance.
- Gradeability figures provided for comparison of tractive performance, but are not intended to endorse the operation of vehicle on the stated inclines.

# RS46-41S / RS46-41L SPECIFICATIONS ◀

				HYSTER				HYSTER				
				RS46-41S CH				RS46-41L CH				
1-1	Manufacturer			HYSTER				HYSTER				
1-2	Model designation			RS46-41S CH				RS46-41L CH				
1-3	Powertrain / drivetrain			Diesel				Diesel				
1-4	Operator type			Seated				Seated				
1-5-1	Load capacity at load center distance $c_1$ without/with stabilizer <b>(1)</b>	$Q_1$	lbs	kg	101,413	46,000	101,413	46,000	101,413	46,000	n/a	n/a
1-5-2	Load capacity at load center distance $c_2$ without/with stabilizer <b>(1)</b>	$Q_2$	lbs	kg	83,776	38,000	90,390	41,000	90,390	41,000	n/a	n/a
1-5-3	Load capacity at load center distance $c_3$ without/with stabilizer <b>(1)</b>	$Q_3$	lbs	kg	46,297	21,000	61,729	28,000	50,706	23,000	n/a	n/a
1-6-1	Load center distance $c_1$ <b>(2)</b>	$c_1$	in	mm	73		1,865		73		1,865	
1-6-2	Load center distance $c_2$ <b>(2)</b>	$c_2$	in	mm	150		3,815		150		3,815	
1-6-3	Load center distance $c_3$ <b>(2)</b>	$c_3$	in	mm	249		6,315		249		6,315	
1-8	Load distance, ctr of drive axle to face of front tires / front of stabilizer	x	in	mm	37	930	41	1,030	37	930	n/a	n/a
1-9	Wheelbase	y	in	mm	244		6,200		264		6,700	
1-10	Stacking height at first row (number x container height)	#	#		5 x 9' 6"				5 x 9' 6"			
2-1	Service weight		lbs	kg	184,306				83,600			
2-2-1	Axle loading with load, front / rear at $c_1$		lbs	kg	232,367	105,400	53,352	24,200	227,958	103,400	55,556	25,200
2-3-1	Axle loading without load, front / rear at $c_1$		lbs	kg	85,319	38,700	98,988	44,900	84,217	38,200	97,885	44,400
3-1	Tire type				Pneumatic				Pneumatic			
3-2	Tire size, front				18.00-33 36PR				18.00-33 36PR			
3-3	Tire size, rear				18.00-33 36PR				18.00-33 36PR			
	Wheels, number front / rear (X = driven wheels)				x4 / 2				x4 / 2			
3-6	Tread, front	$b_{10}$	in	mm	146		3,703		146		3,703	
3-7	Tread, rear	$b_{11}$	in	mm	120		3,060		120		3,060	
4-1	Boom angle minimum / maximum		deg	deg	0 / 59				0 / 59			
4-2	Height of boom lowered	$h_1$	in	mm	189		4,795		189		4,795	
4-4-1	Lift height at load center $c_1$ <b>(3)</b>	$h_{3,1}$	in	mm	605		15,355		605		15,355	
4-4-2	Lift height at load center $c_2$ <b>(3)</b>	$h_{3,2}$	in	mm	549		13,945		549		13,945	
4-5	Height, boom extended	$h_4$	in	mm	717		18,205		717		18,205	
4-7	Height of overhead guard (cabin)	$h_6$	in	mm	150		3,815		150		3,815	
4-8	Seat height to SIP <b>(4)</b>	$h_7$	in	mm	104		2,650		104		2,650	
4-15	Height under Twistlock - lowered <b>(3)</b>	$h_{13}$	in	mm	57		1,440		57		1,440	
4-19	Overall length	$l_1$	in	mm	341		8,650		341		8,650	
4-20	Overall length including boom retracted	$l_2$	in	mm	475		12,073		475		12,073	
4-21-2	Overall width across all of truck	$b_2$	in	mm	165		4,200		165		4,200	
4-21-3	Overall width across spreader 20'	$b_{1,20}$	in	mm	240		6,100		240		6,100	
4-21-4	Overall width across spreader 40'	$b_{1,40}$	in	mm	480		12,200		480		12,200	
4-31	Ground clearance, lowest point	$m_1$	in	mm	10		250		12		304	
4-32	Ground clearance, center or wheelbase	$m_2$	in	mm	21		532		21		532	
4-34-3	Aisle width: 20' container <b>(5)</b>	$Ast_{20}$	in	mm	509		12,940		519		13,180	
4-34-4	Aisle width: 40' container <b>(5)</b>	$Ast_{40}$	in	mm	563		14,310		568		14,420	
4-35	Outside turning radius	$W_a$	in	mm	362		9,200		366		9,300	
4-36	Internal turning radius	$b_{13}$	in	mm	79		2,000		94		2,400	
	<b>PERFORMANCE</b>				<b>CUMMINS QSL9 TIER 4F ENGINE - TE 32</b>							
5-1	Travel speed with / without load		mph	km/h	13.0	21	14.3	23	13.0	21	14.3	23
5-2	Lifting speed with / without load		ft/min	m/s	55	0.28	94	0.48	55	0.28	94	0.48
5-3	Lowering speed with / without load		ft/min	m/s	91	0.46	89	0.45	91	0.46	89	0.45
5-7	Gradeability - 1 mph   1.6 km/h with / without load <b>(6)</b>		%	%	21	21	24	24	21	21	24	24
	<b>PERFORMANCE</b>				<b>CUMMINS QSM11 335HP TIER 3 ENGINE - TE 32</b>							
5-1	Travel speed with / without load		mph	km/h	12.4	20	14.9	24	12.4	20	14.9	24
5-2	Lifting speed with / without load		ft/min	m/s	55	0.28	94	0.48	55	0.28	94	0.48
5-3	Lowering speed with / without load		ft/min	m/s	91	0.46	89	0.45	91	0.46	89	0.45
5-7	Gradeability - 1 mph   1.6 km/h with / without load <b>(6)</b>		%	%	19	19	22	22	19	19	22	22
	<b>PERFORMANCE</b>				<b>QSM11 300HP TIER 3 ENGINE - TE 27</b>							
5-1	Travel speed with / without load		mph	km/h	—	—	—	—	—	—	—	—
5-2	Lifting speed with / without load		ft/min	m/s	—	—	—	—	—	—	—	—
5-3	Lowering speed with / without load		ft/min	m/s	—	—	—	—	—	—	—	—
5-7	Gradeability - 1 mph   1.6 km/h with / without load <b>(6)</b>		%	%	—	—	—	—	—	—	—	—

- (1)** Load capacities shown with mechanical pile slope (MPS) spreader. Deduction for using powered pile slope spreader is approx. 2,000 lbs. (900 kg)
- (2)** From face of front tires.
- (3)** With Mechanical Pile Slope (MPS). For optional Powered Pile Slope (PPS) function: deduct 12.2 in (310 mm).
- (4)** Full suspension seat in depressed position.
- (5)** Spreader at 315 in (8.0 m) high, central above front axle; container 0 in/mm in front of tires; includes 2 x 4 in (100 mm) clearance.
- (6)** Gradeability figures provided for comparison of tractive performance, but are not intended to endorse the operation of vehicle on the stated inclines.

# RS46-41LS / RS46-41XLS SPECIFICATIONS

GENERAL	1-1	Manufacturer	HYSTER				HYSTER						
	1-2	Model designation	RS46-41LS CH				RS46-41XLS CH						
WT.	1-3	Powertrain / drivetrain	Diesel				Diesel						
	1-4	Operator type	Seated				Seated						
	1-5-1	Load capacity at load center distance $c_1$ without/with stabilizer	$Q_1$	lbs	kg	101,413	46,000	101,413	46,000	101,413	46,000	101,413	46,000
	1-5-2	Load capacity at load center distance $c_2$ without/with stabilizer	$Q_2$	lbs	kg	83,776	38,000	90,390	41,000	90,390	41,000	90,390	41,000
	1-5-3	Load capacity at load center distance $c_3$ without/with stabilizer	$Q_3$	lbs	kg	46,297	21,000	66,139	30,000	55,777	25,300	71,871	32,600
	1-6-1	Load center distance $c_1$ (2)	$c_1$	in	mm	73		1,865		73		1,865	
	1-6-2	Load center distance $c_2$ (2)	$c_2$	in	mm	150		3,815		150		3,815	
	1-6-3	Load center distance $c_3$ (2)	$c_3$	in	mm	249		6,315		249		6,315	
	1-8	Load distance, ctr of drive axle to face of front tires / front of stabilizer	x	in	mm	37	930	41	1,030	37	930	41	1,030
	1-9	Wheelbase	y	in	mm	264		6,700		295		7,500	
1-10	Stacking height at first row (number x container height)	#	#		5 x 9' 6"				5 x 9' 6"				
WT.	2-1	Service weight		lbs	kg	186,511		84,600		186,621		84,650	
	2-2-1	Axle loading with load, front / rear at $c_1$		lbs	kg	232,808	105,600	55,116	25,000	230,163	104,400	57,871	26,250
	2-3-1	Axle loading without load, front / rear at $c_1$		lbs	kg	89,067	40,400	97,444	44,200	91,051	41,300	95,570	43,350
WHEELS	3-1	Tire type	Pneumatic				Pneumatic						
	3-2	Tire size, front	18.00-33 36PR				18.00-33 36PR						
	3-3	Tire size, rear	18.00-33 36PR				18.00-33 36PR						
		Wheels, number front / rear (X = driven wheels)	x4 / 2				x4 / 2						
	3-6	Tread, front	$b_{10}$	in	mm	146		3,703		146		3,703	
	3-7	Tread, rear	$b_{11}$	in	mm	120		3,060		120		3,060	
	4-1	Boom angle minimum / maximum		deg	deg	0 / 59				3 / 58			
DIMENSIONS	4-2	Height of boom lowered	$h_1$	in	mm	189		4,795		207		5,265	
	4-4-1	Lift height at load center $c_1$ (2)	$h_{3,1}$	in	mm	605		15,355		599		15,225	
	4-4-2	Lift height at load center $c_2$ (2)	$h_{3,2}$	in	mm	549		13,945		557		14,158	
	4-5	Height, boom extended	$h_4$	in	mm	717		18,205		725		18,420	
	4-7	Height of overhead guard (cabin)	$h_6$	in	mm	150		3,815		150		3,815	
	4-8	Seat height to SIP (3)	$h_7$	in	mm	104		2,650		104		2,650	
	4-15	Height under Twistlock - lowered (2)	$h_{13}$	in	mm	57		1,440		72		1,835	
	4-19	Overall length	$l_1$	in	mm	341		8,650		381		9,690	
	4-20	Overall length including boom retracted	$l_2$	in	mm	475		12,073		507		12,873	
	4-21-2	Overall width across all of truck	$b_2$	in	mm	165		4,200		165		4,200	
	4-21-3	Overall width across spreader 20'	$b_{1,20}$	in	mm	240		6,100		240		6,100	
	4-21-4	Overall width across spreader 40'	$b_{1,40}$	in	mm	480		12,200		480		12,200	
	4-31	Ground clearance, lowest point	$m_1$	in	mm	10		250		10		250	
	4-32	Ground clearance, center or wheelbase	$m_2$	in	mm	21		532		21		532	
	4-34-3	Aisle width: 20' container (4)	$Ast_{20}$	in	mm	519		13,180		550		13,980	
	4-34-4	Aisle width: 40' container (4)	$Ast_{40}$	in	mm	568		14,420		572		14,530	
4-35	Outside turning radius	$W_a$	in	mm	366		9,300		398		10,100		
4-36	Internal turning radius	$b_{13}$	in	mm	94		2,400		94		2,400		
PERFORMANCE	PERFORMANCE			CUMMINS QSL9 TIER 4F ENGINE - TE 32									
	5-1	Travel speed with / without load		mph	km/h	13.0	21	14.3	23	13.0	21	14.3	23
	5-2	Lifting speed with / without load		ft/min	m/s	55	0.28	94	0.48	55	0.28	94	0.48
	5-3	Lowering speed with / without load		ft/min	m/s	91	0.46	89	0.45	91	0.46	89	0.45
	5-7	Gradeability - 1 mph   1.6 km/h with / without load (5)		%	%	21	21	24	24	21	21	24	24
	PERFORMANCE			CUMMINS QSM11 335HP TIER 3 ENGINE - TE 32									
	5-1	Travel speed with / without load		mph	km/h	12.4	20	14.9	24	12.4	20	14.9	24
	5-2	Lifting speed with / without load		ft/min	m/s	55	0.28	94	0.48	55	0.28	94	0.48
	5-3	Lowering speed with / without load		ft/min	m/s	91	0.46	89	0.45	91	0.46	89	0.45
	5-7	Gradeability - 1 mph   1.6 km/h with / without load (5)		%	%	19	19	22	22	19	19	22	22
	PERFORMANCE			QSM11 300HP TIER 3 ENGINE - TE 27									
	5-1	Travel speed with / without load		mph	km/h	—	—	—	—	—	—	—	—
	5-2	Lifting speed with / without load		ft/min	m/s	—	—	—	—	—	—	—	—
	5-3	Lowering speed with / without load		ft/min	m/s	—	—	—	—	—	—	—	—
	5-7	Gradeability - 1 mph   1.6 km/h with / without load (5)		%	%	—	—	—	—	—	—	—	—

- (1) Load capacities shown with mechanical pile slope (MPS) spreader. Deduction for using powered pile slope spreader is approx. 2,000 lbs. (900 kg)
- (2) From face of front tires.
- (3) With Mechanical Pile Slope (MPS). For optional Powered Pile Slope (PPS) function: deduct 12.2 in (310 mm).
- (4) Full suspension seat in depressed position.
- (5) Spreader at 315 in (8.0 m) high, central above front axle; container 0 in/mm in front of tires; includes 2 x 4 in (100 mm) clearance.
- (6) Gradeability figures provided for comparison of tractive performance, but are not intended to endorse the operation of vehicle on the stated inclines.



GENERAL	1-1	Manufacturer				HYSTER			
	1-2	Model designation				RS 46-29/33/36/41 CH			
	1-3	Powertrain / drivetrain				Diesel			

ENGINE	7-1	Engine manufacturer / model			CUMMINS / QSM 11		Cummins / QSM 11		Cummins / QSL9	
	7-1a	EPA / CE compliance			Tier 3 / Stage IIIA		Tier 3 / Stage IIIA		Tier 4 / Stage IV	
	7-2	Engine power output according to ISO 1585	hp	kW	300	224	335	250	350	261
	7-2-1	Engine power output - Peak	hp	kW	300	224	365	272	363	271
	7-3	Rated speed	rpm	1/min	2,100		2,100		2,100	
	7-3-1	Engine torque @rpm (1/min)	lb-ft	N-m	1,050 @ 1000	1,424 @ 1000	1,235 @ 900	1,674 @ 900	1,200 @ 1500	1,627 @ 1500
	7-4	Number of cylinders / displacement	#	cm <sup>3</sup>	6 / 10,800		6 / 10,800		6 / 8,900	
		Turbocharger		Type	Wastegate, water cooled		Wastegate, water cooled		Variable geometry, water cooled	
7-8	Alternator output		Amps	120		120		120		

DRIVE	8-1	Drive control / Transmission		Type / #	Hydrodynamic Transmission	Hydrodynamic Transmission	Hydrodynamic Transmission
	8-2	Transmission manufacturer / type		Type / #	Spicer Off-Highway TE-27	Spicer Off-Highway TE-32	Spicer Off-Highway TE-32
	8-4	Transmission speeds forward / backward		#	4 / 4	4 / 4	4 / 4
	8-5	Coupling		Type	Torque Converter	Torque Converter	Torque Converter
	8-6	Wheel drive / drive axle manufacturer / type		Type / #	Kessler D102	Kessler D102	Kessler D102
	8-11	Service brake		Type	Oil immersed (wet) disc	Oil immersed (wet) disc	Oil immersed (wet) disc
	8-12	Parking brake		Type	Spring applied, dry disc on drive axle	Spring applied, dry disc on drive axle	Spring applied, dry disc on drive axle

SPREADER	9-1	Spreader manufacturer / type		Type / #	Elme / 817	Elme / 817	Elme / 817
	9-1-1	Pile slope, mechanical without PPS		degrees	3	3	3
	9-1-3	Pile slope, total with PPS		degrees	6	6	6
	9-3	Size of containers		ft	ISO 20' - 40'	ISO 20' - 40'	ISO 20' - 40'
	9-4	Side shift	b <sub>8</sub>	in mm	+ 31.5 / - 31.5 + 800 / - 800	+ 31.5 / - 31.5 + 800 / - 800	+ 31.5 / - 31.5 + 800 / - 800
	9-6-1	Rotation angle, without override		degrees	+12 / -12	+12 / -12	+12 / -12
	9-6-2	Rotation angle, with override		degrees	+185 / -95	+185 / -95	+185 / -95

MISC	10-1	Operating pressure for attachments		psi bar	2,031 140	2,031 140	2,031 140
	10-2	Oil volume for attachments		gpm l/m	29 110	29 110	29 110
	10-3	Hydraulic tank capacity		gal l	165 625	165 625	165 625
	10-4	Fuel tank capacity		gal l	219 830	219 830	219 830
	10-4-1	DEF/AdBlue Tank capacity		gal l	N/A	N/A	57
	10-5	Steering design			Hydrostatic	Hydrostatic	Hydrostatic
	10-7	Sound pressure level at driver's seat (7)	Lpaz	dB(A)	78	78	75


### NOTES:

Specifications are affected by the condition of the vehicle and how it is equipped, as well as the nature and condition of the operating area. Inform your dealer of the nature and condition of the intended operating area when purchasing your Hyster® truck.

- Load capacities shown with mechanical pile slope (MPS) spreader. Deduction for using powered pile slope spreader is approx. 2,000 lbs. (900 kg)
- From face of front tires.
- With Mechanical Pile Slope (MPS). For optional Powered Pile Slope (PPS) function: deduct 12.2 in (310 mm).
- Full suspension seat in depressed position.
- Spreader at 315 in (8.0 m) high, central above front axle; container 0 in/mm in front of tires; includes 2 x 4 in (100 mm) clearance.
- Gradeability figures provided for comparison of tractive performance, but are not intended to endorse the operation of vehicle on the stated inclines.
- Add 2 dB(A) for option with additional cab fan.

All capacities are according to EN1459.

All specifications and capacities are valid for trucks equipped with a Hyster® container handling spreader for handling ISO containers.

 **Safety:** This truck conforms to the current EU requirements.

### NOTICE:

Care must be exercised when handling elevated loads. Operators must be trained and must read, understand and follow the instructions contained in the Operating Manual.

All values are nominal values and they are subject to tolerances. For further information, please contact the manufacturer.

Hyster products are subject to change without notice.

Lift trucks illustrated may feature optional equipment. Values may vary with alternative configurations.

*CERTIFICATION: Hyster lift trucks meet the design and construction requirements of B56.1-1969, per OSHA Section 1910.178(a)(2), and also comply with the B56.1 revision in effect at time of manufacture. Certification of compliance with the applicable ANSI standards appears on the lift truck. Performance specifications are for a truck equipped as described under Standard Equipment on this Technical Guide. Performance specifications are affected by the condition of the vehicle and how it is equipped, as well as by the nature, condition of the operating area, proper service and maintenance of the vehicle. If these specifications are critical, the proposed application should be discussed with your dealer.*

*NOTE: Specifications, unless otherwise listed, are for a standard truck without optional equipment.*

Specification data is based on VDI 2198.

## ➤ FEATURES AND OPTIONS

PERFORMANCE	STD	OPT
Cummins QSL 9 diesel engine rated 350 hp (271 kW) Tier 4* variable geometry turbocharger, water cooled		x
Cummins QSM11 diesel engine rated 300 hp (224 kW) Tier 3* wastegate turbocharger, water cooled		x
Cummins QSM11 diesel engine rated 335 hp (250 kW) Tier 3* wastegate turbocharger, water cooled		x
Hibernate idle	x	
Hydraulically driven on-demand cooling fan	x	
120 amp alternator	x	
Powertrain protection system	x	
Spicer Off-Highway TE-32 4-speed auto-shifting transmission*		x
Spicer Off-Highway TE-27 4-speed auto-shifting transmission*		x
Kessler D102 drive axle with wet disc brakes	x	
DRIVE	STD	OPT
Traction speed limiter when carrying container (adjustable)	x	
Traction speed limiter - unconditional (adjustable)		x
Steer axle with full stroke steer cylinder for tight turning radius	x	
Steer axle with reduced stroke steer cylinder for longer tire life		x
Premium E4 Pneumatic bias ply tires	x	
Premium Slick bias ply tires		x
Premium Slick radial tires		x
18.00-25 drive and steer tires*		x
18.00-33 drive and steer tires*		x
VISIBILITY	STD	OPT
External wide angle mirrors mounted on rear of front fenders	x	
External wide angle mirrors mounted on top of front fenders		x
Rear view camera system		x
Halogen work lights	x	
High performance LED work lights		x
LED twistlock indicator lights		x
LED stop/tail/brake lights	x	
Turn signals, hazard & marker lights (LED)*		x

OPERATION	STD	OPT
Electric air horn 112 dB	x	
Visible alarm – amber strobe light	x	
Audible alarm – reverse direction activated 82–102 dB(A), self-adjusting	x	
Forward motion alarm		x
Seatbelt interlock for engine start		x
Seatbelt indicator light on top of cab		x
Tire pressure monitoring system		x
Lockable battery disconnect switch	x	
Battery jump start connector (NATO plug)		x
Adjustable automatic “empty seat” engine shutdown		x
Trainer seat		x
Non-locking fuel cap	x	
Lockable fuel cap		x
Hyster Tracker wireless asset management - monitoring*		x
Hyster Tracker wireless asset management - access / verification		x
Auto greasing system for basic truck & outer boom		x
Auto greasing system for inner boom and spreader		x
24 volt electrical system	x	
Engine block heater 110 & 220 volt		x
Steer wheel lug nut protection	x	
Engine compartment light		x
LIFT	STD	OPT
On-demand load sensing hydraulic system	x	
Automatic throttle-up when lifting (in neutral or inching)	x	
2-stage boom for 5-high 1st row stacking	x	
6-high 1st row stacking		x
3B6 load moment indicator with monochrome display	x	
3B6 load moment indicator with color display		x
High speed hoist system - below 10 tons	x	
Hydraulic system temperature protection		x
Container weighing system SOLAS compliant		x

# FEATURES AND OPTIONS

<b>HANDLING</b>	<b>STD</b>	<b>OPT</b>
Hyster model 817 spreader, with rotation	x	
Mechanical Pile Slope	x	
Powered Pile Slope		x
Powered dampening		x
Wide Twistlock Position (WTP) container handling		x
Intermodal handling - top / bottom pick*		x
Barge container handling		x
4 lifting eyes located on end beam corners	x	
4 lifting eyes located under center beam of spreader		x
Container guides - located outside near twistlocks		x
Container guides - 500mm inset, heavy duty		x
Rotation stops with override	x	
Automatic extend/retract		x
Stops for 30' containers		x
Vertical lift		x
Tool changer		x
Attachments for steel load handling		x
Attachments for wind industry load handling		x
<b>APPEARANCE</b>	<b>STD</b>	<b>OPT</b>
Hyster yellow paint base truck	x	
Special paint base truck		x
<b>ERGONOMICS</b>	<b>STD</b>	<b>OPT</b>
Manual sliding cabin for service access	x	
Powered partial-sliding cabin, incl. additional mirrors on top of fenders		x
Powered full-sliding cabin, including additional steps and handrails		x
Isolated mounting for low noise and vibration	x	
Coat hook	x	
Front, top and rear wipers	x	
Front and rear window defrosters	x	
Left side handrails, stairway and cabin door	x	
RH side door	x	
Right side handrails and stairway		x


Stair lights		x
Multifunction display panel	x	
Seat-side joystick hydraulic control	x	
Steering wheel spinner knob	x	
Directional control lever	x	
Interior wide angle mirrors	x	
Heater with 3-speed fan	x	
Telescoping & tilting steering column	x	
Recirculation fan*		x
DC/DC converter 24 volt/12 volt with socket*		x
2nd 12 volt socket		x
Accessory mounting post		x
Rear locking console in cab		x
Heated top window		x
"H"-pattern front wiper		x
Air conditioning		x
Sun shades on top and rear		x
Radio preparation set-up (wiring, two speakers and antenna)		x
Reading light		x
Operator presence system	x	
Mechanical suspension seat	x	
Deluxe air suspension seat		x
Low backrest on seat*		x
High backrest on seat*		x
Cloth seat cover	x	
Vinyl seat cover		x
Seat heating		x
2-point high visibility seatbelt	x	
3-point high visibility seatbelt		x
<b>SUPPLEMENTAL</b>	<b>STD</b>	<b>OPT</b>
Literature package	x	
Operator's manual	x	
CE certification*		x

\*Standard or optional in selected markets. Other options available through Special Products Engineering Department (SPED). Contact Hyster for details.



Hyster Company  
P.O. Box 7006  
Greenville, North Carolina  
27835-7006  
Part No. RS46CH/TG  
4/2017 Litho in U.S.A.

Visit us online at [www.hyster.com](http://www.hyster.com) or call us at **1-800-HYSTER-1**.

Hyster, , and STRONG PARTNERS. TOUGH TRUCKS. and MONOTROL are registered trademarks in the United States and certain other jurisdictions. Hyster products are subject to change without notice.

Trucks may be shown with optional equipment. © 2017 Hyster Company. All rights reserved.