



CONVEYING EQUIPMENT PRODUCT HANDBOOK





SUPERIOR CONVEYING EQUIPMENT

STACKING CONVEYORS

- P/3 TeleStacker® Conveyor
- P/13 Pinnacle® Conveyor
- P/19 PowerStacker® Conveyor
- P/25 Portable Radial Stacking Conveyor
- P/29 Radial Stacking Conveyor
- P/33 Geotrek® Conveyor
- P/35 Tripper Conveyor

TRANSFER CONVEYORS

- P/37 Trailblazer® Conveyor
- P/39 Zipline™ Conveyor
- P/43 Overland Conveyors
- P/47 Slide-Pac™ and Slide-Stac™ Conveyors
- P/49 Jump Conveyors
- P/51 Stackable Conveyors

FEED SYSTEMS

- P/55 RazerTail® Truck Unloader
- P/59 Razerlink™ Conveyor
- P/61 Tunnel Reclaim

MOBILE SHIPLoadERS

- P/63 Passport™ Mobile Shiploader

CONVEYOR SIZING

- P/69 Conveyor Incline Chart
- P/69 Maximum Belt Capacities
- P/70 Stockpile Capacities

CONVEYOR COMPONENTS

- P/71-72 Superior Idlers, Pulleys and Accessories



The logo for Superior Industries, featuring the word "SUPERIOR" in a bold, white, sans-serif font inside a black oval with a red border.

TELESTACKER[®] CONVEYOR

110' / 130' / 136' / 150' / 158' / 170' / 190'

- With more than **1,000 units manufactured** and capacities up to 5,000 TPH, Superior is the world's leading builder of telescopic conveyors. ■
- Our commitment to **cutting-edge technology** means we're working to identify, create and perfect the TeleStacker Conveyor. ■
- Our legacy of **structurally sound engineering and manufacturing** is vital for safety and endurance in all applications. ■
- Defeat costly material segregation and build the **highest volume, in-spec stockpiles**. ■

HIGHLIGHTS



- 1/ **CHEVRON® PULLEY:** Patented v-shaped pulley deflects fugitive material to extend pulley life and lessen belt wear. In addition, constant belt contact reduces vibration and noise generation by 50 decibels.
- 2/ **SEALING SYSTEM:** Prevents material spillage in load zone by maintaining a tight seal between belt and hopper skirting.
- 3/ **SONICSCOUT™ MATERIAL SENSOR:** If no material is present, sensor sends signal to automation program, sounding an alarm and pauses automation until action is taken.
- 4/ **METAL GUARDING:** Safeguards are essential to protect workers from injury. Superior's guarding is identified easily with safety yellow paint.
- 5/ **EXTERRA® BELT CLEANERS:** Patented Superior brand scraper blades designed with thicker edge, for extra material at crucial point of attack, providing longer life.
- 6/ **MATERIAL LEVEL SENSOR:** No contact sensor feeds automation program stockpile height. Sensor is not affected by dust.
- 7/ **NAVIGATOR® RETURN TRAINER:** Patented return roller constantly guides and centers belt to prevent misalignment, common to conveyors that constantly move.
- 8/ **CAM ROLLERS:** Patented center pivot design supports the weight of the entire stinger conveyor equally across all rollers, which reduces stress on frame which provides longer life.
- 9/ **STINGER SAFETY STOPS:** Designs that protect your investment. Safety stops immediately react in the event of stinger cable failure, minimizing structure damage.
- 10/ **SLIDETRACK SYSTEM:** A support system for electrical and hydraulic cables, this new and improved technology was designed with long-lasting galvanized steel and no catch points for fugitive material. While the machine is locked out, simply detach a side guard for easy access to maintenance.
- 11/ **RAISE CYLINDERS:** Used to raise and lower stacker and are specially designed for safety. Counterbalance valve keeps the raise cylinders from lowering if there is a hydraulic failure.
- 12/ **FB® UNDERCARRIAGE:** Patented for maximum undercarriage support and the most rigid lateral stability. Load sharing hydraulic cylinders add even greater structural support and safety.
- 13/ **AXLE CONFIGURATION:** Three styles of road/radial travel axles for applications from exceptionally road portable to fixed radial stacking.
- 14/ **PILEPRO™ AUTOMATION:** Tested and proven automation program solves pile segregation issues and produces a uniformed quality spec material. Automation program signals operator when service maintenance is required.



COMPENSATION LINKAGE



EXTERRA® SFL DUAL BELT CLEANER



HYDRAULIC LANDING JACKS



WALKWAY (ON MAIN CONVEYOR)



URATHON® RETURN ROLL



BELT COVERS

- COMPENSATION LINKAGE (FD AXLE)
- 4-WHEEL DRIVE (FD AXLE)
- EXTERRA® BELT CLEANER
- POWER TRAVEL SENSOR
- SELF-ALIGNING IDLERS
- PORTABLE JACKS
- AXLE JACKS
- WALKWAYS
- DUAL POWER TRAVEL (XTP AXLE)
- URATHON® RETURN ROLL

- WIRED REMOTE SYSTEM
- DUAL POWER SOURCE
- SHIELD-ALL® GUARD
- COLD WEATHER KIT
- WIRELESS REMOTE
- SPRAY BARS
- MAINFRAME CONVEYOR COVERS
- STINGER CONVEYOR COVER
- HYDRAULIC LANDING JACKS
- PILEPRO™ AUTOMATION

- AUTO GREASER
- MOXIE® ROLLS
- BELT UPGRADE
- IMPACT IDLERS
- ON-BOARD COUNTERWEIGHT (XTP AXLE)
- GALVANIZED
- BELT SCALE
- TOW EYE

SAFETY

A/ FB® UNDERCARRIAGE

- Patented undercarriage support system is designed with more steel for rock solid bracing.
- Fully braced inner structure glides within fully braced outer structure to ensure stability and safety.
- Mounting position of hydraulics allow cylinders to aid in structural support.

B/ STINGER SAFETY CATCH

- Continuously monitor cable tension to stinger conveyor.
- Immediately reacts in event of stinger cable failure.
- Spring loaded mechanical device is field tested and proven.

C/ STINGER CROSS BRACING

- Increased bracing maintains structural rigidity under heavy material and wind loads.

D/ ROBUST TRUSS

- Condensed lattice spacing increases structural integrity of conveyor truss design.

E/ CAM ROLLERS

- Patented, large 8" diameter rollers support the stinger conveyor as it travels.
- Center pivot design supports conveyor weight equally on all rollers.
- Rollers at top and bottom of stinger conveyor for extra stability.



A/ PATENTED FB UNDERCARRIAGE



B/ STINGER SAFETY CATCH



C/ STINGER CROSS BRACING



D/ ROBUST TRUSS



E/ CAM ROLLERS

PATENTED FD AXLE



HYDRAULICALLY TRANSFER FROM ROAD TO OPERATION IN SECONDS



HYDRAULICALLY ADJUST TIRES TO OFFSET UNEVEN TERRAIN



ENCLOSED DRIVE PROTECTS GEARING FROM DEBRIS



TRACKS CONQUER LOW PRESSURE SOILS

XTP SWING AXLE



PHYSICALLY TRANSFER FROM ROAD TO OPERATION IN MINUTES



CONCRETE PAD PROVIDES LEVEL RUNWAY



PULL T-HANDLE TO ENGAGE POWER TRAVEL; NO CHAIN DRIVE



LINK ARMS SECURE ROAD AND RADIAL TIRES

PILEPRO™ AUTOMATION

- In-house automation engineers reduce reliance on third parties.
- Step by step program is easy to setup and understand.
- Exclusive zoning technique builds higher volume stockpile on same footprint.

NEW FD AXLE AUTO LEVEL

Standard on all FD Axle models, an auto level feature maintains a balanced head pulley, which greatly improves effective belt tracking across uneven terrain. (Patent Pending)

- Special diagnostics screen allows users to quickly pinpoint faults.
- Proactive maintenance reminders signal operators to complete conveyor upkeep tasks.
- Onscreen pile volume estimator reports approximate tonnage based on parameters set.
- Save settings for up to four unique pile configurations.



TOUCH SCREEN REACTS TO GLOVE CONTACT



SET PILE PARAMETERS IN VISUAL SETTING SCREEN



RECALL 1 OF 4 PREVIOUSLY SAVED PILE TYPES



DIAGNOSTICS HELP IDENTIFY THE SOURCE OF ISSUE

PHOTO GALLERY



LOW PROFILE ELIMINATES TRANSFER CONVEYOR BETWEEN PLANT AND STACKER



72" X 190' STOCKPILES AT 5,000 TPH



FD AXLE TRANSFERS FROM ROAD TO STOCKPILE MADE IN SECONDS



RADIAL WINDROW STOCKPILING ACHIEVES IN-SPEC MATERIAL MIX



EQUIPPED WITH FD TRACKS, THIS UNIT CONQUERS LOW PRESSURE SOILS



AT A RAILYARD, THIS UNIT CREATES EIGHT UNIQUE MATERIAL STOCKPILES



THE MOST EFFECTIVE SOLUTION FOR CONTROLLING SEGREGATION



A 190' TSSA IS CAPABLE OF PRODUCING A 209,300 CUBIC YARD STOCKPILE

FD AXLE TSFD SPECIFICATIONS

OPERATING DIMENSIONS	110'	130'	136'*	150'	158'*
Conveyor Length (m)	110'-0" (33.5)	130'-0" (39.6)	136'-0" LP (41.5)	150'-0" (45.7)	158'-0" LP (48.0)
Highest Extended Discharge Height (m)	41'-3" (12.6)	45'-5" (13.8)	44'-0" (13.4)	52'-9" (16.1)	48'-10" (14.8)
Lowest Extended Discharge Height (m)	18'-10" (5.7)	19'-4" (5.9)	18'-6" (5.6)	19'-6" (5.9)	19'-6" (5.9)
Highest Retracted Discharge Height (m)	25'-0" (7.6)	27'-3" (8.3)	27'-1" (8.2)	30'-10" (9.4)	30'-10" (9.4)
Lowest Retracted Discharge Height (m)	11'-8" (3.5)	13'-1" (4.0)	12'-8" (3.8)	12'-6" (3.8)	12'-4" (3.7)
Anchor Pivot to Center of Axle (m)	39'-8" (12.1)	49'-0" (15.0)	55'-4" (16.9)	54'-9" (16.7)	70'-11" (21.6)
STOCKPILE DIMENSIONS					
Maximum Pile Height (m)	39'-2" (11.9)	43'-0" (13.1)	43'-2" (13.1)	50'-0" (15.2)	47'-3" (14.4)
Lowered Stockpile Height (m)	15'-6" (4.7)	15'-10" (4.8)	14'-9" (4.5)	16'-7" (5.0)	18'-10" (5.7)
Anchor Pivot to Center of Pile (m)	100'-2" (30.5)	115'-8" (35.2)	126'-4" (38.5)	132'-6" (40.4)	145'-6" (44.3)
TRAVEL DIMENSIONS					
Travel Length - Kingpin to Rear (m)	60'-0" (18.2)	70'-0" (21.3)	80'-0" (24.4)	80'-0" (24.4)	97'-6" (29.7)
Travel Height (m)	12'-5" (3.8)	13'-9" (4.2)	13'-0" (3.9)	13'-10" (4.2)	14'-0" (4.3)
Travel Width (m)	11'-11" (3.6)	11'-11" (3.6)	11'-11" (3.6)	11'-11" (3.6)	11'-6" (3.5)
Kingpin to End of Tow Eye (m)	5'-10" (1.7)	5'-10" (1.7)	5'-10" (1.7)	5'-11" (1.8)	6'-0" (1.9)
Kingpin to Axle (m)	37'-11" (11.5)	47'-7" (14.5)	54'-0" (16.4)	53'-10" (16.4)	70'-0" (21.3)
Axle to Head Pulley (m)	22'-0" (6.7)	22'-4" (6.8)	25'-6" (7.7)	26'-1" (7.9)	27'-6" (8.3)
FD Axle Size	FD40	FD40	FD40	FD50	FD50
Weight at Axle - 36" Belt Width (kg)	30,500 (13,830)	34,800 (15,785)	36,000 (16,329)	40,000 (18,144)	53,200 (24,131)
Weight at Kingpin - 36" Belt Width (kg)	12,500 (5,670)	18,300 (8,300)	13,000 (5,897)	24,600 (11,158)	16,000 (7,257)

* Denotes Low Profile Model

XTP AXLE TSSA SPECIFICATIONS

OPERATING DIMENSIONS	130'	150'	170'	190'
Conveyor Length (m)	130'-0" (39.6)	150'-0" (45.7)	170'-0" (51.8)	190'-0" (57.9)
Highest Extended Discharge Height (m)	47'-0" (13.8)	52'-6" (16.0)	60'-0" (18.5)	67'-8" (20.5)
Lowest Extended Discharge Height (m)	14'-5" (6.0)	15'-10" (6.0)	14'-11" (4.5)	16'-1" (5.0)
Highest Retracted Discharge Height (m)	27'-3" (8.0)	30'-10" (3.0)	38'-6" (11.0)	53'-7" (16.5)
Lowest Retracted Discharge Height (m)	13'-1" (4.0)	12'-6" (4.0)	10'-8" (4.0)	11'-4" (3.5)
Anchor Pivot to Center of Axle (m)	48'-6" (14.5)	56'-4" (17.0)	73'-10" (22.5)	73'-10" (22.5)
STOCKPILE DIMENSIONS				
Maximum Pile Height (m)	44'-5" (13.5)	50'-0" (15.2)	58'-3" (17.7)	66'-1" (20.1)
Lowered Stockpile Height (m)	11'-5" (3.4)	12'-10" (3.9)	11'-11" (3.6)	14'-3" (4.3)
Anchor Pivot to Center of Pile (m)	116'-2" (35.4)	125'-0" (38.1)	153'-9" (46.8)	163'-1" (49.7)
TRAVEL DIMENSIONS				
Travel Length - Kingpin to Rear (m)	80'-0" (24.3)	80'-0" (24.3)	100'-0" (30.5)	115'-0" (35.0)
Travel Height (m)	12'-3" (3.7)	13'-9" (4.2)	13'-9" (4.2)	14'-0" (4.2)
Travel Width (m)	11'-11" (3.6)	11'-11" (3.6)	11'-11" (3.6)	11'-11" (3.6)
Kingpin to End of Tow Eye (m)	5'-10" (1.7)	5'-11" (1.8)	5'-11" (1.8)	5'-11" (1.8)
Kingpin to Axle (m)	52'-3" (15.9)	59'-9" (18.2)	77'-3" (23.5)	94'-6" (28.8)
Axle to Head Pulley (m)	27'-5" (8.3)	20'-4" (6.1)	22'-10" (6.9)	22'-10" (6.9)
Weight at Axle - 36" Belt Width (kg)	37,500 (17,000)	38,000 (17,235)	46,000 (20,865)	47,000 (21,318)
Weight at Kingpin - 36" Belt Width (kg)	13,600 (6,168)	18,550 (8,414)	20,865 (9,464)	22,500 (10,205)

STOCKPILE CAPACITIES

MAXIMUM STOCKPILE CAPACITIES (MANUAL PILES) ASSUMPTIONS BASED ON MATERIAL WHICH HAS A 37° ANGLE OF REPOSE AND 100 PCF (1.6 t/m³) MATERIAL DENSITY.

Conveyor Length	Stockpile Height ft x in (m)	Stockpile Volume in Cubic Yards (m ³)				Stockpile Volume in Tons (MT)			
		Conical	90°	180°	270°	Conical	90°	180°	270°
110 TSFD	39'-0" (11.8)	4,900 (3,200)	19,700 (15,000)	34,400 (26,300)	49,200 (37,600)	6,600 (6,000)	26,600 (24,100)	46,500 (42,200)	66,500 (60,300)
130 TSFD	42'-0" (12.8)	6,200 (4,700)	27,300 (20,900)	48,300 (37,000)	69,300 (53,000)	8,400 (7,600)	36,800 (33,400)	65,200 (59,100)	93,600 (84,900)
130 TSSA	45'-6" (13.8)	6,700 (5,100)	27,700 (21,200)	48,700 (37,200)	69,700 (53,300)	9,000 (8,200)	37,400 (34,000)	65,800 (59,600)	94,200 (85,500)
136 TSFD-LP	41'-6" (12.6)	6,900 (5,300)	30,000 (23,000)	53,300 (40,800)	76,500 (58,500)	9,300 (8,400)	40,600 (36,800)	71,900 (65,200)	103,200 (93,600)
150 TSFD	50'-0" (15.2)	9,300 (7,100)	41,000 (31,300)	72,600 (55,500)	104,300 (79,800)	12,600 (11,400)	55,300 (50,200)	98,100 (89,000)	140,800 (127,700)
150 TSSA	50'-0" (15.2)	9,200 (7,000)	40,100 (30,700)	71,000 (54,300)	102,000 (78,000)	12,400 (11,200)	54,100 (49,000)	95,900 (87,000)	137,700 (124,900)
158 TSFD-LP	47'-0" (14.3)	9,700 (7,400)	40,900 (31,300)	72,200 (55,200)	103,500 (79,100)	13,100 (11,900)	55,200 (50,100)	97,500 (88,400)	139,700 (126,800)
170 TSSA	58'-0" (17.6)	12,900 (9,900)	56,100 (42,900)	99,300 (76,000)	142,400 (108,900)	17,500 (15,900)	75,800 (68,800)	134,000 (121,600)	192,300 (174,500)
190 TSSA	66'-0" (20.1)	18,700 (14,300)	82,300 (63,000)	145,800 (111,500)	209,300 (160,000)	25,300 (23,000)	111,100 (100,800)	196,800 (178,500)	282,600 (256,400)
72x190 TSPP	61'-0" (18.6)	16,700 (12,800)	75,700 (57,900)	134,800 (103,000)	193,800 (148,200)	22,500 (20,400)	102,200 (92,700)	181,600 (164,700)	261,600 (237,300)

PHOTO GALLERY





PINNACLE[®] CONVEYOR

80' / 100' / 125'

- Pinnacle Conveyor stockpiles at 22° incline (standard is 18°), with a set-back axle, which **prevents stockpile from burying axle**.
- Patented FD Axle allows quickest, **safest transition from road to stockpile mode**.
- Fully enclosed power travel gearing offers **protection from dust** and fugitive material.
- Patented power fold **protects hydraulic cylinder rods** from damaging debris during operation.

HIGHLIGHTS



1/ **RADIAL RECEIVING HOPPER:** Gathering trough includes adjustable rubber flashing.

2/ **CONVEYOR FRAME:** Rigid designs up to 42" deep truss.

3/ **V-PLOW:** Clean return side of belts and protect tail pulley from damaging material.

4/ **FOLD SUPPORT:** Protects the conveyor and belt integrity during folding and unfolding.

5/ **POWERFOLD:** Patented design protects hydraulic cylinder rods from damaging debris during operation.

6/ **ENCLOSED POWER TRAVEL:** Protects gearing from dust and debris common in conveying applications.

7/ **FD AXLE:** Patented technology allows operators to transition from road travel to stockpile mode in just seconds.

8/ **CHEVRON® PULLEY:** Patented v-shaped wing pulley prevents fugitive material from trapping between wings; extends belt life.

9/ **TOWING EYE:** Rugged adjustable eye pintle hitch/hook provides a more secure coupling. (Not shown)

A/ 22° INCLINE

- Increased incline creates higher stockpile suitable for smaller footprints.
- Set back axle design avoids burying tires in material.

B/ PATENTED FD AXLE ASSEMBLY

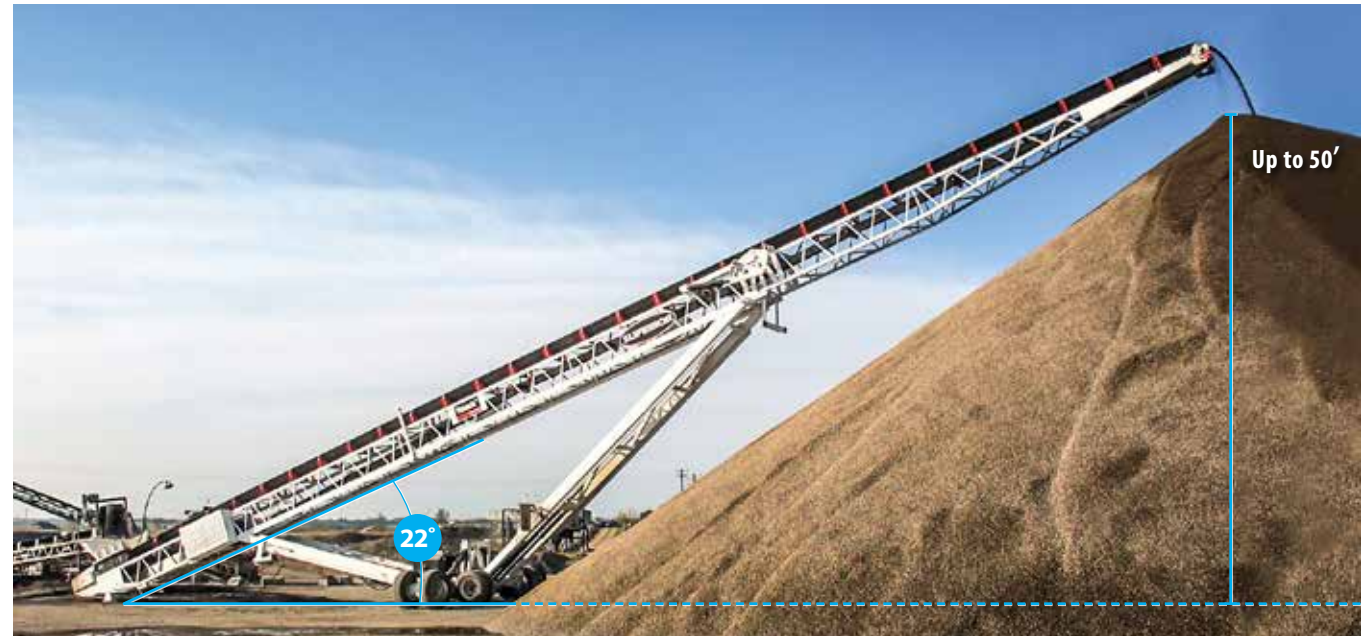
- Transfer from road travel to radial travel mode **in seconds.**
- Enclosed planetary wheel drive protects gearing from dust and debris.
- Independently raise and lower FD tires to level conveyor on uneven ground.
- Off-the-road (OTR) tires conquer low ground pressure applications.

XTP AXLE ASSEMBLY

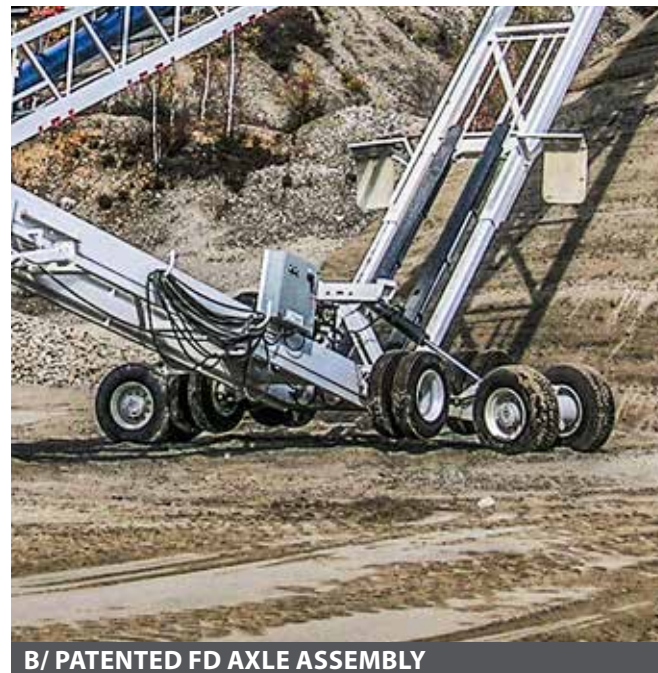
- Go from radial travel to transport mode **in less than 3 minutes.**
- Eliminates time consuming set-up time by using a direct drive instead of traditional chain drive.

C/ PATENTED POWER FOLDS

- Cylinder rod not exposed to elements during operation.
- Lever actuated folding and unfolding of conveyor.
- Very quick transition from transport to stockpile positions.



A/ 22° INCLINE



B/ PATENTED FD AXLE ASSEMBLY



C/ PATENTED POWER FOLDS

OPTIONS



MOXIE® ROLLS



EXTERRA® SFL DUAL BELT CLEANER



HYDRAULIC LANDING JACKS



ONBOARD POWER



MODULAR 3-SIDED HOPPER W/ FOLD UP WINGS



SEALING SYSTEM

- **BELT COVERS:** Limit dust generation; protect material.
- **BELT SCALE:** Evaluate inventory more accurately.
- **EXTERRA® SFL DUAL BELT CLEANER:** Primary and secondary blades on one pole.
- **GALVANIZED:** Resist corrosion; prevent rusting.
- **MOXIE® ROLLS:** Non-steel rolls shed sticky material.
- **IMPACT BED:** Protect belt in transfer zones.
- **IMPACT ROLLS:** Protect belt in load zones.

- **3-PLY CONVEYOR BELTING:** Larger size ores; rugged service.
- **ANCHOR PIVOT PLATE:** Maintains tail position during radial travel.
- **ALL WHEEL DRIVE:** Dependability in low pressure soils.
- **XTP AXLE:** Same tires for road and radial travel.
- **AUTO GREASERS:** Program to automatically discharge grease.
- **ONBOARD POWER:** Self-contained diesel engine.

- **RECEIVING HOPPER:** Wider target for material transfer.
- **SEALING SYSTEM:** Prevent spillage between hopper skirting and belt.
- **SONICSCOUT™ MATERIAL SENSOR:** Detect material on belting.
- **URATHON® RETURN ROLL:** Shed wet, sticky material.

SPECIFICATIONS

GENERAL SPECS

Tons Per Hour (TPH): Up to 1,200

Belt Widths (inches): Up to 42

Belt Speed (FPM): 350

Incline Angle: 22°

OPERATING DIMENSIONS

	80'	100'	125'
Conveyor Length (m)	80'-0" (24.4)	100'-0" (30.5)	125'-0" (38.1)
Conveyor Ground Length (m)	72'-3" (22.0)	91'-0" (27.7)	116'-4" (35.4)
Raised Height to Center of Pulley (m)	32'-5" (9.9)	39'-4" (12.0)	50'-8" (15.4)
Lowered Height to Center of Pulley (m)	18'-1" (5.5)	20'-1" (6.1)	18'-2" (5.4)
Anchor Pivot to Center of Axle (m)	32'-2" (9.8)	39'-8" (12.1)	46'-5" (14.2)

STOCKPILE DIMENSIONS

Raised Stockpile Height (m)	33'-0" (10.1)	40'-0" (12.2)	50'-0" (15.2)
Lowered Stockpile Height (m)	18'-1" (5.5)	20'-1" (6.1)	18'-2" (5.5)
Radius of Pile (m)	42'-2" (12.9)	51'-7" (15.8)	66'-5" (20.3)
Anchor Pivot to Center of Pile (m)	74'-6" (22.7)	93'-0" (28.4)	114'-7" (35.0)

TRAVEL DIMENSIONS

Travel Length - Kingpin to Rear (m)	53'-7" (16.4)	68'-8" (21.0)	84'-2" (25.7)
Travel Height (m)	13'-5" (4.0)	13'-2" (4.0)	13'-11" (4.2)
Travel Width (m)	11'-2" (3.4)	11'-5" (3.4)	11'-6" (3.5)
Kingpin to End of Tow Eye (m)	5'-1" (1.5)	5'-0" (1.5)	5'-6" (1.7)
Kingpin to Axle (m)	34'-7" (10.6)	39'-7" (12.1)	49'-4" (15.1)
Axle to Head Pulley (m)	19'-0" (5.8)	29'-1" (8.9)	34'-10" (10.6)
FD Axle Size	FD15	FD20	FD40
Weight at Axle - 36" Belt Width (kg)	20,000 (9,072)	27,250 (12,360)	39,500 (17,917)
Weight at Kingpin - 36" Belt Width (kg)	6,500 (2,948)	6,300 (2,858)	9,500 (4,309)

MAXIMUM STOCKPILE CAPACITIES (MANUAL PILES) ASSUMPTIONS BASED ON MATERIAL WHICH HAS A 37° ANGLE OF REPOSE AND 100 PCF (1.6 t/m³) MATERIAL DENSITY.

Conveyor Length	Stockpile Height ft x in (m)	Stockpile Volume in Cubic Yards (m ³)				Stockpile Volume in Tons (MT)			
		Conical	90°	180°	270°	Conical	90°	180°	270°
80'	33'-0" (10.1)	2,500 (1,900)	8,600 (6,600)	14,900 (11,400)	21,100 (16,100)	3,300 (3,000)	11,700 (10,600)	20,100 (18,200)	28,500 (25,900)
100'	40'-0" (12.2)	4,500 (3,500)	16,300 (12,500)	28,000 (21,400)	39,700 (30,400)	6,100 (5,500)	21,900 (20,000)	37,700 (34,200)	53,600 (48,600)
125'	50'-0" (15.2)	8,500 (6,500)	31,000 (23,700)	52,900 (40,500)	75,000 (57,400)	11,400 (10,300)	41,400 (37,600)	71,400 (64,800)	101,400 (92,000)

SIDE BY SIDE COMPARISON

	POWERSTACKER CONVEYOR	PINNACLE CONVEYOR
Tons Per Hour (TPH)	Up to 1,500	Up to 1,200
Belt Widths (inches)	30, 36, 42, 48	30, 36, 42
Standard Lengths (feet)	95, 110, 125, 150	80, 100, 125
Belt Speed (FPM)	400	350
Incline	18°	22°

CONVEYOR SPLICE OPTIONS

Bolt Splice	—	●
Manual Fold	—	○
Power Fold	●	○

UNDERCARRIAGE OPTIONS

Manual Raise Undercarriage	—	●
Hydraulic Raise Undercarriage	●	○

AXLE OPTIONS

FD Axle	●	○
XTP Axle	—	○
Power Radial Travel	●	○

LANDING LEGS OPTIONS

Slide Tube	●	○
Crank Down	●	○

ADDITIONAL OPTIONS

5 ft. Radial Receiving Hopper	●	○
Rock Box	○	○
5th Wheel Hitch	●	○
Brakes/Lights/Mudflaps	●	○
Tow Eye	●	○
Anchor Pivot Plate/Base	●	○

● STANDARD ○ AVAILABLE — N/A

CUBIC YARDS - PINNACLE VS. POWERSTACKER STOCKPILE COMPARISON

Conveyor Length	Stockpile Volume in Cubic Yards (m ³)			
	Conical	90°	180°	270°
80' PC	2,500 (1,900)	8,600 (6,600)	14,900 (11,400)	21,100 (16,100)
100' PC	4,500 (3,500)	16,300 (12,500)	28,000 (21,400)	39,700 (30,400)
125' PC	8,500 (6,500)	31,000 (23,700)	52,900 (40,500)	75,000 (57,400)
95' PS	2,300 (1,800)	9,600 (7,300)	16,900 (12,900)	24,200 (18,500)
110' PS	3,500 (2,700)	14,500 (11,100)	25,600 (19,600)	36,600 (28,000)
125' PS	4,900 (3,700)	20,800 (16,000)	36,700 (28,100)	52,600 (40,200)
150' PS	8,200 (6,300)	35,000 (26,800)	61,900 (47,300)	88,700 (67,800)

TONS - PINNACLE VS. POWERSTACKER STOCKPILE COMPARISON

Conveyor Length	Stockpile Volume in Tons (MT)			
	Conical	90°	180°	270°
80' PC	3,300 (3,000)	11,700 (10,600)	20,100 (18,200)	28,500 (25,900)
100' PC	6,100 (5,500)	21,900 (20,000)	37,700 (34,200)	53,600 (48,600)
125' PC	11,400 (10,300)	41,400 (37,600)	71,400 (64,800)	101,400 (92,000)
95' PS	3,100 (2,800)	13,000 (11,800)	22,800 (20,700)	32,700 (29,700)
110' PS	4,700 (4,300)	19,600 (17,800)	34,500 (31,300)	49,400 (44,800)
125' PS	6,700 (6,100)	28,100 (25,500)	49,600 (45,000)	71,000 (64,400)
150' PS	11,100 (10,100)	47,300 (42,900)	83,500 (75,700)	119,700 (108,600)

Assumptions based on aggregate which has a 37° angle of repose and 100 PCF (1.6 t/m³) material density.



POWERSTACKER[®] CONVEYOR

95' / 110' / 125' / 150'

- Patented FD Axle allows **quickest, safest transition** from road to stockpile mode. ■
- Start stockpiling sooner since only **one person needed** for fast and easy setup. ■
- Fully enclosed power travel gearing offers **protection from dust** and fugitive material. ■
- Patented power fold **protects hydraulic cylinder rods** from damaging debris during operation. ■

HIGHLIGHTS



- 1/ **RADIAL RECEIVING HOPPER:** Gathering trough includes adjustable rubber flashing.
- 2/ **CONVEYOR FRAME:** Rigid designs up to 42" deep truss.
- 3/ **POWERFOLD:** Patented design protects hydraulic cylinder rods from damaging debris during operation.
- 4/ **FOLD SUPPORT:** Protects the conveyor and belt integrity during folding and unfolding.

- 5/ **HYDRAULIC RAISE:** Hydraulically raise, lower, fold and unfold.
- 6/ **ENCLOSED POWER TRAVEL:** Protects gearing from dust and debris common in conveying applications.
- 7/ **FD AXLE:** Patented technology allows operators to transition from road travel to stockpile mode in just seconds.

- 8/ **V-PLOW:** Clean return side of belts and protect tail pulley from damaging material.
- 9/ **CHEVRON® PULLEY:** Patented v-shaped wing pulley prevents fugitive material from trapping between wings; extends belt life.
- 10/ **TOWING EYE:** Rugged adjustable eye pintle hitch/hook provides a more secure coupling.

*For applications on limited footprints, consider Superior's Pinnacle® Conveyor to stockpile at a higher 22° angle.
(See page 13)*

A/ HYDRAULIC CONTROL CENTER

- Folds and unfolds conveyor.
- Raises and lowers conveyor.
- Operates FD Axle.
- Controls radial travel.

B/ PATENTED FD AXLE ASSEMBLY

- Transfer from road travel to radial travel mode in seconds.
- Enclosed planetary wheel drive protects gearing from dust and debris.
- Independently raise and lower FD tires to level conveyor on uneven ground.
- Off-the-road (OTR) tires conquer low ground pressure applications.

C/ PATENTED POWER FOLDS

- Cylinder rod not exposed to elements during operation.
- Lever actuated folding and unfolding of conveyor.
- Very quick transition from transport to stockpile positions.



A/ HYDRAULIC CONTROL CENTER



B/ PATENTED FD AXLE ASSEMBLY



C/ PATENTED POWER FOLD



ROAD TRAVEL MODE

OPTIONS



ALL WHEEL DRIVE



EXTERRA® SFL DUAL BELT CLEANER



SONICSCOUT™ MATERIAL SENSOR



ONBOARD POWER



RECEIVING HOPPER



URATHON® RETURN ROLL

- **3-PLY CONVEYOR BELTING:** Larger size ores; rugged service.
- **ANCHOR PIVOT PLATE:** Maintains tail position during radial travel.
- **EXTERRA® SFL DUAL BELT CLEANER:** Primary and secondary blades on one pole.
- **ALL WHEEL DRIVE:** Dependability in low pressure soils.
- **AUTO GREASERS:** Program to automatically discharge grease.
- **IMPACT ROLLS:** Protect belt in load zones.

- **URATHON® RETURN ROLL:** Shed wet, sticky material.
- **BELT SCALE:** Evaluate inventory more accurately.
- **GALVANIZED:** Resist corrosion; prevent rusting.
- **MOXIE® ROLLS:** Non-steel rolls shed sticky material.
- **IMPACT BED:** Protect belt in transfer zones.
- **ONBOARD POWER:** Self-contained diesel engine.
- **RECEIVING HOPPER:** Wider target for material transfer.

- **SEALING SYSTEM:** Prevent spillage between hopper skirting and belt.
- **SONICSCOUT™ MATERIAL SENSOR:** Detect material on belting.

SPECIFICATIONS

GENERAL SPECS

Tons Per Hour (TPH): Up to 1,500

Belt Widths (inches): Up to 48

Belt Speed (FPM): 400

Incline Angle: 18°

OPERATING DIMENSIONS

	95'	110'	125'	150'
Conveyor Length (m)	95'-0" (29.0)	110'-0" (33.5)	125'-0" (38.1)	150'-0" (45.7)
Conveyor Ground Length (m)	88'-4" (26.9)	102'-0" (31.1)	118'-11" (36.2)	140'-4" (42.8)
Raised Height to Center of Pulley (m)	32'-3" (9.8)	36'-4" (11.1)	41'-4" (12.6)	48'-0" (14.6)
Lowered Height to Center of Pulley (m)	13'-8" (4.2)	17'-2" (5.2)	17'-7" (5.4)	15'-2" (4.6)
Anchor Pivot to Center of Axle (m)	47'-7" (14.5)	56'-3" (17.2)	60'-2" (18.3)	79'-6" (24.1)

STOCKPILE DIMENSIONS

Raised Stockpile Height (m)	32'-0" (9.8)	37'-0" (11.3)	42'-0" (12.8)	50'-0" (15.2)
Lowered Stockpile Height (m)	12'-4" (3.8)	16'-2" (4.9)	17'-3" (5.3)	13'-8" (4.2)
Radius of Pile (m)	41'-1" (12.5)	47'-2" (14.4)	54'-6" (16.6)	61'-8" (18.8)
Anchor Pivot to Center of Pile (m)	91'-0" (27.7)	104'-6" (31.9)	118'-6" (36.2)	144'-0" (43.9)

TRAVEL DIMENSIONS

Travel Length - Kingpin to Rear (m)	78'-8" (24.0)	60'-10" (18.6)	70'-9" (21.6)	80'-7" (24.6)
Travel Height (m)	13'-6" (4.2)	14'-1" (4.3)	14'-0" (4.3)	13'-11" (4.2)
Travel Width (m)	11'-11" (3.6)	12'-8" (3.9)	11'-11" (3.6)	11'-11" (3.6)
Kingpin to End of Tow Eye (m)	5'-1" (1.6)	5'-11" (1.8)	6'-0" (1.8)	5'-11" (1.8)
Kingpin to Axle (m)	50'-11" (15.5)	29'-2" (8.9)	33'-6" (10.2)	49'-6" (15.1)
Axle to Head Pulley (m)	22'-8" (6.9)	25'-8" (7.9)	31'-3" (9.5)	25'-3" (7.7)
FD Axle Size	FD15	FD20	FD40	FD50
Weight at Axle - 36" Belt Width (kg)	17,750 (8,051)	19,940 (9,044)	33,000 (14,969)	34,200 (15,513)
Weight at Kingpin - 36" Belt Width (kg)	4,000 (1,814)	3,060 (1,388)	3,500 (1,588)	10,200 (4,627)

MAXIMUM STOCKPILE CAPACITIES (MANUAL PILES) ASSUMPTIONS BASED ON MATERIAL WHICH HAS A 37° ANGLE OF REPOSE AND 100 PCF (1.6 t/m³) MATERIAL DENSITY.

Conveyor Length	Stockpile Height ft x in (m)	Stockpile Volume in Cubic Yards (m ³)				Stockpile Volume in Tons (MT)			
		Conical	90°	180°	270°	Conical	90°	180°	270°
95'	32'-0" (9.8)	2,300 (1,800)	9,600 (7,300)	16,900 (12,900)	24,200 (18,500)	3,100 (2,800)	13,000 (11,800)	22,800 (20,700)	32,700 (29,700)
110'	37'-0" (11.3)	3,500 (2,700)	14,500 (11,100)	25,600 (19,600)	36,600 (28,000)	4,700 (4,300)	19,600 (17,800)	34,500 (31,300)	49,400 (44,800)
125'	42'-0" (12.8)	4,900 (3,700)	20,800 (16,000)	36,700 (28,100)	52,600 (40,200)	6,700 (6,100)	28,100 (25,500)	49,600 (45,000)	71,000 (64,400)
150'	49'-0" (14.9)	8,200 (6,300)	35,000 (26,800)	61,900 (47,300)	88,700 (67,800)	11,100 (10,100)	47,300 (42,900)	83,500 (75,700)	119,700 (108,600)

SIDE BY SIDE COMPARISON

	POWERSTACKER CONVEYOR	PINNACLE CONVEYOR
Tons Per Hour (TPH)	Up to 1,500	Up to 1,200
Belt Widths (inches)	30, 36, 42, 48	30, 36, 42
Standard Lengths (feet)	95, 110, 125, 150	80, 100, 125
Belt Speed (FPM)	400	350
Incline	18°	22°

CONVEYOR SPLICE OPTIONS

Bolt Splice	—	●
Manual Fold	—	○
Power Fold	●	○

UNDERCARRIAGE OPTIONS

Manual Raise Undercarriage	—	●
Hydraulic Raise Undercarriage	●	○

AXLE OPTIONS

FD Axle	●	○
XTP Axle	—	○
Power Radial Travel	●	○

LANDING LEGS OPTIONS

Slide Tube	●	○
Crank Down	●	○

ADDITIONAL OPTIONS

5 ft. Radial Receiving Hopper	●	○
Rock Box	○	○
5th Wheel Hitch	●	○
Brakes/Lights/Mudflaps	●	○
Tow Eye	●	○
Anchor Pivot Plate/Base	●	○

● STANDARD ○ AVAILABLE — N/A

CUBIC YARDS - PINNACLE VS. POWERSTACKER STOCKPILE COMPARISON

Conveyor Length	Stockpile Volume in Cubic Yards (m ³)			
	Conical	90°	180°	270°
80' PC	2,500 (1,900)	8,600 (6,600)	14,900 (11,400)	21,100 (16,100)
100' PC	4,500 (3,500)	16,300 (12,500)	28,000 (21,400)	39,700 (30,400)
125' PC	8,500 (6,500)	31,000 (23,700)	52,900 (40,500)	75,000 (57,400)
95' PS	2,300 (1,800)	9,600 (7,300)	16,900 (12,900)	24,200 (18,500)
110' PS	3,500 (2,700)	14,500 (11,100)	25,600 (19,600)	36,600 (28,000)
125' PS	4,900 (3,700)	20,800 (16,000)	36,700 (28,100)	52,600 (40,200)
150' PS	8,200 (6,300)	35,000 (26,800)	61,900 (47,300)	88,700 (67,800)

TONS - PINNACLE VS. POWERSTACKER STOCKPILE COMPARISON

Conveyor Length	Stockpile Volume in Tons (MT)			
	Conical	90°	180°	270°
80' PC	3,300 (3,000)	11,700 (10,600)	20,100 (18,200)	28,500 (25,900)
100' PC	6,100 (5,500)	21,900 (20,000)	37,700 (34,200)	53,600 (48,600)
125' PC	11,400 (10,300)	41,400 (37,600)	71,400 (64,800)	101,400 (92,000)
95' PS	3,100 (2,800)	13,000 (11,800)	22,800 (20,700)	32,700 (29,700)
110' PS	4,700 (4,300)	19,600 (17,800)	34,500 (31,300)	49,400 (44,800)
125' PS	6,700 (6,100)	28,100 (25,500)	49,600 (45,000)	71,000 (64,400)
150' PS	11,100 (10,100)	47,300 (42,900)	83,500 (75,700)	119,700 (108,600)

Assumptions based on aggregate which has a 37° angle of repose and 100 PCF (1.6 t/m³) material density.



PORTABLE RADIAL STACKING CONVEYOR

50' / 60' / 80' / 95' / 100' / 110' / 125' / 150'

- Engineered to be the **quickest** from road transportation to field operation.
- Superior offers the industry standard with **more sizes available** than anyone else.
- Equipped with a heavy duty undercarriage for **stability, safety and support**.
- In-house engineers **calculate and design truss** to your specific application needs.

FEATURES AND OPTIONS



MANUAL FOLD TOP



AIR BRAKES / ROAD PACKAGE



TOWING EYE



FD AXLE



AUTO GREASER



HYDRAULIC RAISE



ANCHOR PIVOT PLATE



SWIVEL WHEELS FOR ROAD/RADIAL

- HEAVY DUTY UNDERCARRIAGE
- FD AXLE
- FIFTH WHEEL HITCH
- CHEVRON® PULLEY
- RADIAL TRAVEL
- TOWING EYE
- BELT SCALE
- NAVIGATOR® RETURN TRAINER

- MOXIE® ROLLS
- URATHON® RETURN ROLLS
- BELTING UPGRADE
- MANUAL TOP FOLD
- POWER TOP FOLD
- POWER TRAVEL
- EXTERRA® PRIMARY BELT CLEANER
- EXTERRA® SFL DUAL BELT CLEANER

- RADIAL RECEIVING HOPPER
- HYDRAULIC AXLE JACKS
- ANCHOR PIVOT PLATE
- AIR BRAKE PACKAGE
- AUTO GREASER
- HYDRAULIC RAISE
- LANDING GEAR
- IMPACT BED

- LIGHT PACKAGE
- TANK HEATER

SPECIFICATIONS

GENERAL SPECS

Tons Per Hour (TPH): Up to 1,200

Belt Widths (inches): Up to 42

Belt Speed (FPM): 400

Incline Angle: 18°

OPERATING DIMENSIONS	50'	60'	80'	95'	100'	110'	125'	150'
Conveyor Length (m)	50'-0" (15.2)	60'-0" (18.2)	80'-0" (24.4)	95'-0" (29.0)	100'-0" (30.4)	110'-0" (33.5)	125'-0" (38.1)	150'-0" (45.7)
Conveyor Ground Length (m)	45'-9" (14.0)	55'-2" (16.8)	74'-4" (22.7)	89'-0" (27.1)	93'-0" (28.5)	102'-0" (31.1)	116'-2" (35.4)	139'-9" (42.6)
Raised Height to Center of Pulley (m)	17'-11" (5.5)	21'-0" (6.4)	28'-1" (8.3)	33'-0" (10.1)	35'-4" (10.8)	36'-0" (11.0)	40'-11" (12.2)	49'-6" (15.1)
Lowered Height to Center of Pulley (m)	12'-5" (3.8)	12'-5" (3.8)	14'-6" (4.3)	14'-0" (4.2)	13'-6" (4.1)	17'-0" (5.2)	19'-5" (5.9)	17'-11" (5.5)
Anchor Pivot to Center of Axle (m)	25'-5" (7.8)	31'-2" (9.5)	39'-9" (12.1)	48'-4" (14.6)	51'-5" (15.6)	56'-7" (16.9)	60'-2" (18.4)	77'-3" (23.6)

STOCKPILE DIMENSIONS

Raised Stockpile Height (m)	18'-6" (5.7)	21'-6" (6.5)	28'-0" (8.5)	32'-0" (9.7)	34'-0" (10.4)	37'-0" (11.3)	42'-0" (12.8)	49'-0" (14.9)
Lowered Stockpile Height (m)	11'-2" (3.4)	11'-0" (3.4)	13'-3" (4.1)	13'-0" (4.0)	16'-2" (4.9)	17'-3" (5.3)	17'-3" (5.3)	13'-8" (4.2)
Radius of Pile (m)	21'-0" (6.4)	27'-0" (8.2)	36'-6" (11.2)	41'-4" (12.6)	42'-9" (13.0)	47'-0" (14.3)	55'-4" (16.9)	61'-10" (18.9)
Anchor Pivot to Center of Pile (m)	47'-10" (14.6)	57'-6" (17.6)	76'-5" (23.3)	90'-6" (27.6)	95'-3" (29.1)	104'-6" (31.9)	119'-0" (36.2)	143'-4" (43.7)

TRAVEL DIMENSIONS

Travel Length - Kingpin to Rear (m)	49'-5" (15.1)	59'-5" (18.1)	63'-7" (19.4)	73'-8" (22.3)	78'-8" (24.0)	60'-10" (18.6)	70'-9" (21.6)	80'-7" (24.6)
Travel Height (m)	11'-8" (3.6)	11'-10" (3.6)	14'-2" (4.3)	13'-7" (4.2)	13'-6" (4.2)	14'-1" (4.3)	14'-0" (4.3)	13'-11" (4.2)
Travel Width (m)	11'-6" (3.5)	11'-0" (3.3)	11'-9" (3.5)	11'-9" (3.5)	11'-9" (3.5)	12'-8" (3.9)	11'-11" (3.6)	11'-11" (3.6)
Kingpin to End of Tow Eye (m)	5'-3" (1.6)	5'-3" (1.6)	5'-2" (1.6)	5'-2" (1.6)	5'-3" (1.6)	5'-11" (1.8)	6'-0" (1.8)	5'-11" (1.8)
Kingpin to Axle (m)	24'-8" (7.6)	30'-10" (9.4)	40'-9" (12.5)	48'-5" (14.8)	53'-8" (16.4)	29'-2" (8.9)	33'-6" (10.2)	49'-6" (15.1)
Axle to Head Pulley (m)	24'-9" (7.6)	28'-7" (8.7)	22'-10" (7.0)	25'-3" (7.3)	24'-11" (7.6)	25'-8" (7.9)	31'-3" (9.5)	25'-3" (7.7)
FD Axle Size (If Equipped)	FD15	FD15	FD15	FD15	FD20	FD40	FD40	FD50
Weight at Axle - 36" Belt Width (kg)	7,000 (3,175)	7,500 (3,402)	11,300 (6,124)	14,000 (6,350)	18,000 (8,165)	33,000 (14,969)	33,000 (14,969)	34,200 (15,513)
Weight at Kingpin - 36" Belt Width (kg)	625 (283)	925 (420)	3,000 (1,361)	2,500 (1,134)	2,000 (1,769)	3,500 (1,588)	3,500 (1,588)	10,200 (4,627)

STOCKPILE CAPACITIES

MAXIMUM STOCKPILE CAPACITIES (MANUAL PILES) ASSUMPTIONS BASED ON MATERIAL WHICH HAS A 37° ANGLE OF REPOSE AND 100 PCF (1.6 t/m ³) MATERIAL DENSITY.									
Conveyor Length	Stockpile Height ft x in (m)	Stockpile Volume in Cubic Yards (m ³)				Stockpile Volume in Tons (MT)			
		Conical	90°	180°	270°	Conical	90°	180°	270°
50'	18'-6" (5.7)	430 (330)	1,700 (1,300)	2,900 (2,200)	4,200 (3,200)	580 (530)	2,300 (2,100)	4,000 (3,600)	5,600 (5,100)
60'	21'-6" (6.6)	680 (520)	2,700 (2,100)	4,800 (3,700)	6,800 (5,200)	920 (840)	3,700 (3,400)	6,400 (5,800)	9,200 (8,300)
80'	28'-0" (8.5)	1,500 (1,200)	6,000 (4,600)	10,500 (8,000)	15,000 (11,500)	2,000 (1,800)	8,100 (7,300)	14,200 (13,000)	20,200 (18,300)
95'	32'-0" (9.8)	2,300 (1,800)	9,600 (7,300)	16,900 (12,900)	24,200 (18,500)	3,100 (2,800)	13,000 (11,800)	22,800 (20,700)	32,700 (29,700)
100'	34'-0" (10.4)	2,700 (2,100)	11,100 (8,500)	19,500 (14,900)	28,600 (21,400)	3,600 (3,300)	15,000 (13,600)	26,400 (23,900)	38,000 (34,500)
110'	37'-0" (11.3)	3,500 (2,700)	14,500 (11,100)	25,600 (19,600)	36,600 (28,000)	4,700 (4,300)	19,600 (17,800)	34,500 (31,300)	49,400 (44,800)
125'	42'-0" (12.8)	4,900 (3,700)	20,800 (15,900)	36,700 (28,100)	52,600 (40,200)	6,700 (6,100)	28,100 (25,500)	49,600 (45,000)	71,100 (64,500)
150'	49'-0" (14.9)	8,200 (6,300)	35,000 (26,800)	61,900 (47,300)	88,700 (67,800)	11,100 (10,100)	47,300 (42,900)	83,500 (75,700)	119,700 (108,600)

PHOTO GALLERY





RADIAL STACKING CONVEYOR

125' / 150' / 180' / 200'

- Added bracing and support of patented FB® Undercarriage ensures unrivaled **safety and support**. ■
- Designed to convey material at high capacities up to and **exceeding 8,000 TPH**. ■
- Pit portable option allows **radial tires to swivel** for transportation around quarry or mine. ■
- In-house engineers **calculate and design** truss to specific application needs. ■

HIGHLIGHTS



- 1/ **CHEVRON® PULLEY:** Patented v-shaped pulley deflects fugitive material to extend pulley life and lessen belt wear. In addition, constant belt contact reduces vibration and noise generation by 50 decibels.
- 2/ **SEALING SYSTEM:** Prevents material spillage in load zone by maintaining a tight seal between belt and hopper skirting.
- 3/ **METAL GUARDING:** Safeguards are essential to protect workers from injury. Superior's guarding is identified easily with safety yellow paint.
- 4/ **EXTERRA® BELT CLEANERS:** Patented Superior brand scraper blades designed with thicker edge for extra material at crucial point of attack.

- 5/ **NAVIGATOR® RETURN TRAINER:** Patented return roller constantly guides and centers belt to prevent misalignment, common to conveyors that constantly move.
- 6/ **FB® UNDERCARRIAGE:** Patented for maximum undercarriage support and the most rigid lateral stability. Load sharing hydraulic cylinders add even greater structural support and safety.
- 7/ **RAISE CYLINDERS:** Used to raise and lower stacker and are specially designed for safety. Counterbalance valve keeps the raise cylinders from lowering if there is a hydraulic failure.

- 8/ **WEIGHTED TAKE-UP:** Snub drive pulley with weight take-up helps eliminate belt slippage on high capacity applications.
- 9/ **SONICSCOUT™ MATERIAL SENSOR:** If no material is present, sensor sends signal to automation program sounding an alarm and disabling conveyor until action is taken. (Not Shown)

Ideal for moving material in high capacity applications.

FEATURES AND OPTIONS

PATENTED FB® UNDERCARRIAGE

- Fully braced inner structure glides within a fully braced outer structure to ensure stability, safety and support.
- Cylinders are covered to protect from material spillage.

PIT PORTABLE AXLE ASSEMBLY

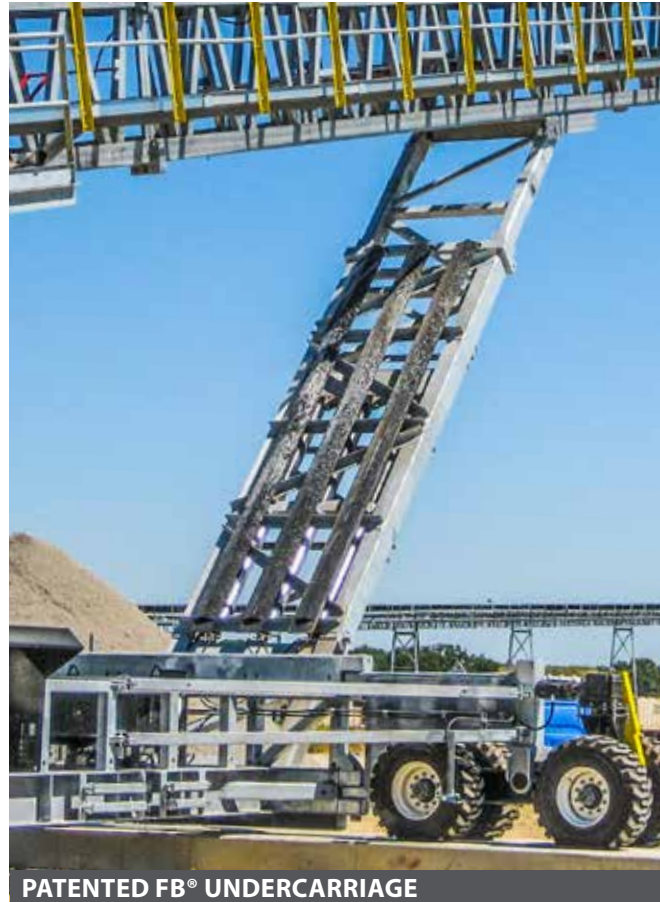
- For in-pit mobility, FD Axle can be raised or swing axle can be rotated parallel to conveyor so stacker can be towed.

FIXED AXLE ASSEMBLY

- Specifically designed so pivot point is anchored and tires follow the radial travel arc, effectively eliminating tire scuffing.

OPTIONS

- EXTERRA® PRIMARY BELT CLEANER
- NAVIGATOR® RETURN TRAINER
- URATHON® RETURN ROLLS
- CROSSOVER PLATFORMS
- ZERO SPEED SENSOR
- POWER TRAVEL
- RADIAL HOPPER
- TANK HEATER
- BELT SCALE
- WEIGHTED TAKE-UP
- WALKWAY
- LIGHTING PACKAGE
- DISCHARGE HOOD
- HYDRAULIC RAISE
- GALVANIZED
- V-PLOW
- E-STOP



PATENTED FB® UNDERCARRIAGE



WALKWAY



WEIGHTED TAKE-UP



CROSSOVER PLATFORM



DISCHARGE HOOD

SPECIFICATIONS

GENERAL SPECS

Tons Per Hour (TPH): Up to 8,000

Belt Widths (inches): Up to 96

Incline Angle: 18°

MAXIMUM STOCKPILE CAPACITIES (MANUAL PILES) ASSUMPTIONS BASED ON MATERIAL WHICH HAS A 37° ANGLE OF REPOSE AND 100 PCF (1.6 t/m³) MATERIAL DENSITY.

Conveyor Length	Stockpile Height ft x in (m)	Stockpile Volume in Cubic Yards (m³)				Stockpile Volume in Tons (MT)			
		Conical	90°	180°	270°	Conical	90°	180°	270°
125'	42'-0" (12.8)	4,900 (3,700)	20,800 (15,900)	36,700 (28,100)	52,600 (40,200)	6,700 (6,100)	28,100 (25,500)	49,600 (45,000)	71,100 (64,500)
150'	49'-0" (14.9)	8,200 (6,300)	35,000 (26,800)	61,900 (47,300)	88,700 (67,800)	11,100 (10,100)	47,300 (42,900)	83,500 (75,700)	119,700 (108,600)
180'	59'-0" (18.0)	13,000 (10,600)	59,200 (45,300)	104,600 (80,000)	150,000 (114,700)	18,600 (16,900)	80,000 (72,600)	141,200 (128,100)	202,500 (183,700)
200'	65'-0" (19.8)	18,600 (14,200)	80,300 (61,400)	141,900 (108,800)	203,600 (155,700)	25,100 (22,800)	108,300 (98,200)	191,600 (173,800)	274,900 (249,400)

PHOTO GALLERY





GEOTREK[®] CONVEYOR

42" x 80'

- Optional **proportional track drive technology** allows for steady and smooth acceleration and deceleration. ■
- Directly **links with portable crushing and screening** equipment in applications that require stockpiling. ■
- Independent hydraulic cylinders allow the unit to be used as a **mobile transfer or stockpile conveyor**. ■
- Set back tracks allow conveyor to **stockpile at 23° incline** (standard is 18°) for higher stockpiles on smaller footprints. ■

FEATURES



A/ PATENTED POWER FOLD



B/ REMOTE CONTROLS



C/ PROPORTIONAL TRACK DRIVE



D/ CONTAINERIZED

A/ PATENTED POWER FOLD: Protects hydraulic cylinders during operation.

B/ REMOTE CONTROLS: Hand-held control operates the belt and tracks.

C/ TRACK DRIVE: Allows for steady travel.

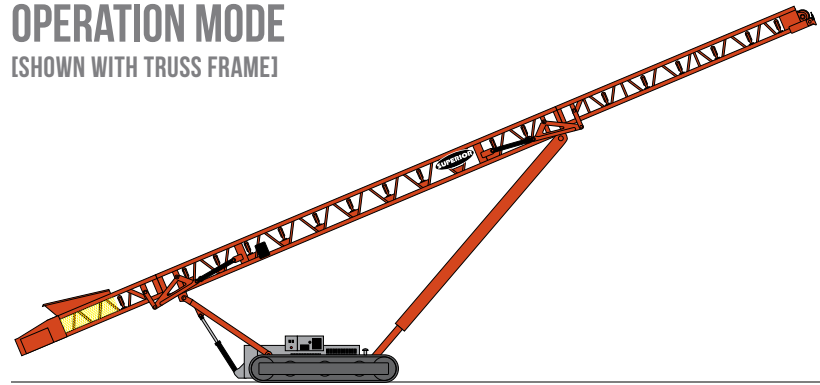
D/ CONTAINERIZED: Transport dimensions allow for a fit inside a 40-foot shipping container.

ON-BOARD POWER: 77HP diesel engine supplies hydraulic power.

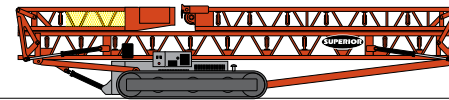
TRUSS FRAME: Designed to be heavy enough to handle the job but light-weight for shipping.

CHANNEL FRAME: Heavy duty conveyor frame built for optimal in-field performance and portability.

OPERATION MODE [SHOWN WITH TRUSS FRAME]



CONTAINER/TRANSPORT MODE



SPECIFICATIONS

CONVEYOR DIMENSIONS		77'	
Conveyor Length ft (m)		77' -0" (23.4)	
Conveyor Ground Length ft (m)		65' -0" (19.8)	
Raised Height to Center of Pulley ft (m)		32' -8" (10.0)	
Lowered Height to Center of Pulley ft (m)		6' -5" (2.0)	
Transport Length ft (m)		38' -9" (11.9)	
Transport Height ft (m)		8' -0" (2.4)	
Transport Width ft (m)		7' -6" (2.3)	
GEOTREK® CONVEYOR DIMS	MAXIMUM STOCKPILE HEIGHT (M)	MAXIMUM CONICAL STOCKPILE CAPACITY CUBIC YARD (M3)	TONS BASED ON 100 PCF TONS (MT)
77' -0"	34' -0" (10.4)	2700 (2,064)	3700 (3,356)

Assumptions based on aggregate which has a 37° angle of repose and 100 PCF (1.6 t/m³) material density.



TRIPPER CONVEYOR

- Build and maintain large volume **stockpiles on limited, linear footprints**. ■
- Discharge material on either side of conveyor** and create custom heights, lengths and locations of stockpiles. ■
- Heavier, more **robust truss design** requires fabrication of fewer pillars, reducing up-front costs. ■
- Versus high capacity stockpiling with trucks, conveyors are the **safest and most cost-efficient** way to pile material. ■

PHOTO GALLERY



HOW IT WORKS

1. A tripper car travels along a truss-mounted track guided by flanged wheels.
2. Designed with a one or two-sided chute, the cars discharge material at one or both sides of the truss.
3. Driven by an electric drive, the cars are powered by a switch gear, which powers the drive.
4. Concrete pillars are erected to lift the structure, engineered to withstand the pressure of the stockpiles.



SUPERIOR

**EXCLUSIVELY
— FROM —
SUPERIOR**



TRAILBLAZER[®] CONVEYOR

36" / 42"

- **500-foot pre-assembled portable groundline conveyor** (including belting) transports from site to site in one 84-foot towable load.
- Compared to several transfer conveyors, a **single transfer point reduces maintenance** cleanup and power cable management.
- One conveyor drive and a single belt **reduces energy costs** produced by several transfer conveyors.
- Experienced crews can unfold/fold the 500-foot package in **as little as an hour**.

SPECIFICATIONS AND PHOTO GALLERY

OPERATING DIMENSIONS	36" BW	42" BW
Feed Height to Hopper (m)	4'-2" (1.3)	4'-2" (1.3)
Discharge Height to Center of Head Pulley (m)	12'-6" (3.8)	12'-6" (3.8)
Conveyor Length (m)	500'-0" (152.4)	500'-0" (152.4)
Tons per Hour (tonnes per hour)	1,000 (907)	1,500 (1,360)
TRAVEL DIMENSIONS		
Travel Length (m)	83'-3" (25.4)	86'-7" (26.4)
Travel Height (m)	14'-0" (4.3)	14'-0" (4.3)
Travel Width (m)	11'-4" (3.5)	11'-10" (3.6)
Weight at Axle (kg)	41,500 (18,824)	47,500 (21,545)
Weight at Kingpin (kg)	28,000 (12,700)	40,000 (18,143)





ZIPLINE™ CONVEYOR

30" / 36" / 42"

- Pre-engineered, modular overland system designed for **quick, toolless installations**. ■
- Compared to spec-by-spec highly engineered system, this unit is a **lower cost overland** alternative. ■
- Designed with **off-the-shelf components** for easy sourcing of replacement idlers, pulleys and accessories. ■
- Modular design allows for **easy structural additions** in the future. ■

STANDARD FEATURES



PRE-ENGINEERED HEAD ASSEMBLY



PRE-ASSEMBLED TAIL SECTION



GALVANIZED STANDS AND INTERMEDIATES



TOOLLESS INTERMEDIATE INSTALLATION



STANDARD, OFF-THE-SHELF IDLERS



TOOLLESS IDLER INSTALLATION



INTEGRATED RETURN IDLER BRACKETS



SECTIONS SPAN 10-FEET



CHEVRON® PULLEY IN TAIL SECTION

OPTIONS



NAVIGATOR® RETURN TRAINER



SELF-ALIGNING TROUGHING IDLERS



MOXIE® ROLLS



EXTERRA® SFL DUAL BELT CLEANER



IDLER GUARDS



E-STOP CORD



DISCHARGE HOOD



GRAVITY OR SCREW TAKE-UP



SLOPED OR ROCKBOX RECEIVING HOPPER

SPECIFICATIONS

GENERAL SPECS

Tons Per Hour (TPH): Up to 1,500

Belt Widths (inches): Up to 42

Belt Speed (FPM): 400-450

BELT WIDTHS	30"		36"		42"	
Max. Tons per Hour (tonnes/hour)	500 (453.6)	500 (453.6)	1,000 (907.1)	1,000 (907.1)	1,500 (1,360.7)	1,500 (1,360.7)
Max. Length at 6° Incline (m)	250'-0" (76.2)	500'-0" (152.4)	250'-0" (76.2)	400'-0" (121.9)	250'-0" (76.2)	350'-0" (106.7)
Max. Lift at 6° Incline (m)	30'-0" (9.9)	52'-6" (16.0)	27'-0" (8.2)	42'-0" (12.8)	22'-0" (6.7)	39'-0" (11.9)
Max Length at Flat (m)	500'-0" (152.4)	1,000'-0" (304.8)	500'-0" (152.4)	1,000'-0" (304.8)	500'-0" (152.4)	1,000'-0" (304.8)
Max Lift at Flat (m)	10'-0" (3.9)	10'-0" (3.9)	10'-0" (3.9)	10'-0" (3.9)	10'-0" (3.9)	10'-0" (3.9)
Horsepower (kwh)	30HP (22.4)	50HP (37.3)	50HP (37.3)	75HP (56.0)	60HP (44.7)	100HP (74.6)
Belt Speed (m)	400'-0" (121.9)	400'-0" (121.9)	400'-0" (121.9)	400'-0" (121.9)	450'-0" (137.2)	450'-0" (137.2)

ADDITIONAL DIMENSIONS

Head Section Length (m)	39'-8" (12.9)
Discharge Height to Center of Pulley (m)	8'-6" (2.6)
Rock Box Hopper Feed Height (m)	4'-11" (1.5)
Sloped Hopper Feed Height (m)	5'-7" (1.7)
Intermedial Channel Section Length (m)	9'-11" (3.0)
Stand Height to Center of Return Roll (m)	1'-1" (0.6)

STANDARDS

- 4" (10.2cm) Structural Channel
- Medium Duty Pillow Block Bearings
- CEMA C5 Idlers
- 4'-0" (1.2) to 5'-0" (1.5) Idler Spacing
- Galvanized Intermediate Sections



CHANNEL SECTION CONNECTING TO STAND



TROUGHING IDLERS ATTACH WITH J-BOLTS



OFF-THE-SHELF CEMA C5 IDLERS



TRAILER LOAD WITH HEAD, TAIL AND STANDS

See video at bit.ly/zipline-conveyor



OVERLAND CONVEYORS

24" - 72"

- **In-house engineering staff** custom designs each system and its components to match diverse application variables.
- **Robust design and manufacturing** standards including hefty 8" channel, truss frame options and performance-matched drive packages.
- Tried-and-true **Superior brand conveyor components** hand picked by our engineers to best fit the application.
- Eliminate unpredictable costs associated with haul trucks, while providing an **environmentally-friendly** means to transfer material.

OPTIONS



TRUSS FRAME CONVEYOR



CHANNEL FRAME CONVEYOR



GRAVITY TAKE-UP TOWER



PERFORMANCE MATCHED DRIVES



WALKWAYS



AREA LIGHTING

- EXTERRA® PRIMARY BELT CLEANER
- EXTERRA® SFL DUAL BELT CLEANER
- NAVIGATOR® RETURN TRAINER
- CHANNEL FRAME STRUCTURE
- TRUSS FRAME STRUCTURE
- CHANNEL FRAME SUPPORTS
- COMBINATION TRUSS/
CHANNEL FRAME DESIGN
- RADIAL RECEIVING HOPPER
- URATHON® RETURN ROLLS

- GATHERING TROUGH WITH
ADJUSTABLE FLASHING
- PLUGGED CHUTE SENSOR
- SELF-ALIGNING IDLERS
- RETURN ROLL GUARDS
- ZERO SPEED SENSOR
- GALVANIZED FINISH
- DISCHARGE HOODS
- IMPACT ROLLS
- IMPACT BEDS

- BRAKING SYSTEM
- SEALING SYSTEM
- DRIVE PACKAGES
- MOXIE® ROLLS
- WIND HOOPS
- WALKWAYS
- TAKE-UPS
- COVERS
- E-STOP
- BELTING

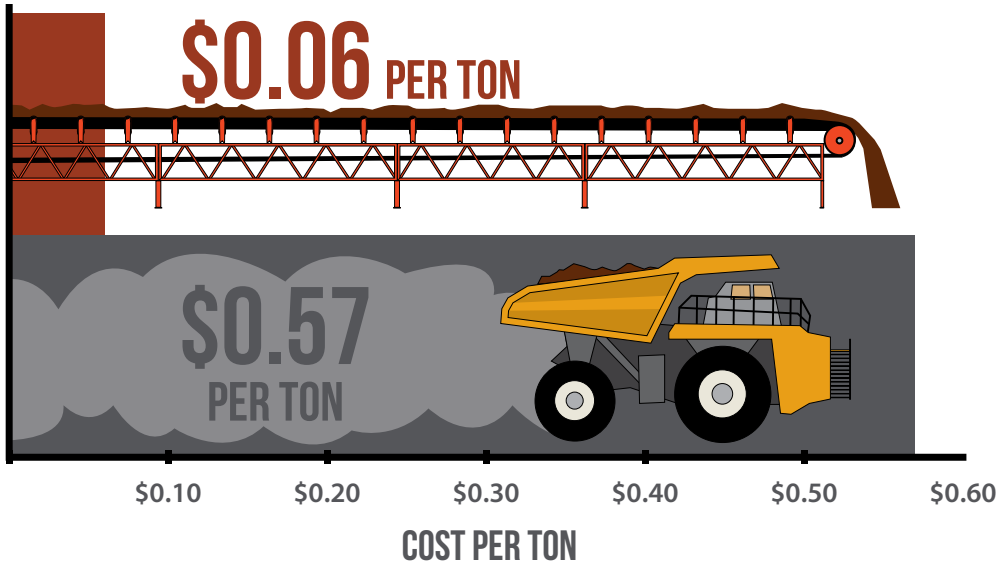
- BELT MISALIGNMENT SENSOR
- BELT RIP DETECTOR
- BELT SCALE

PHOTO GALLERY

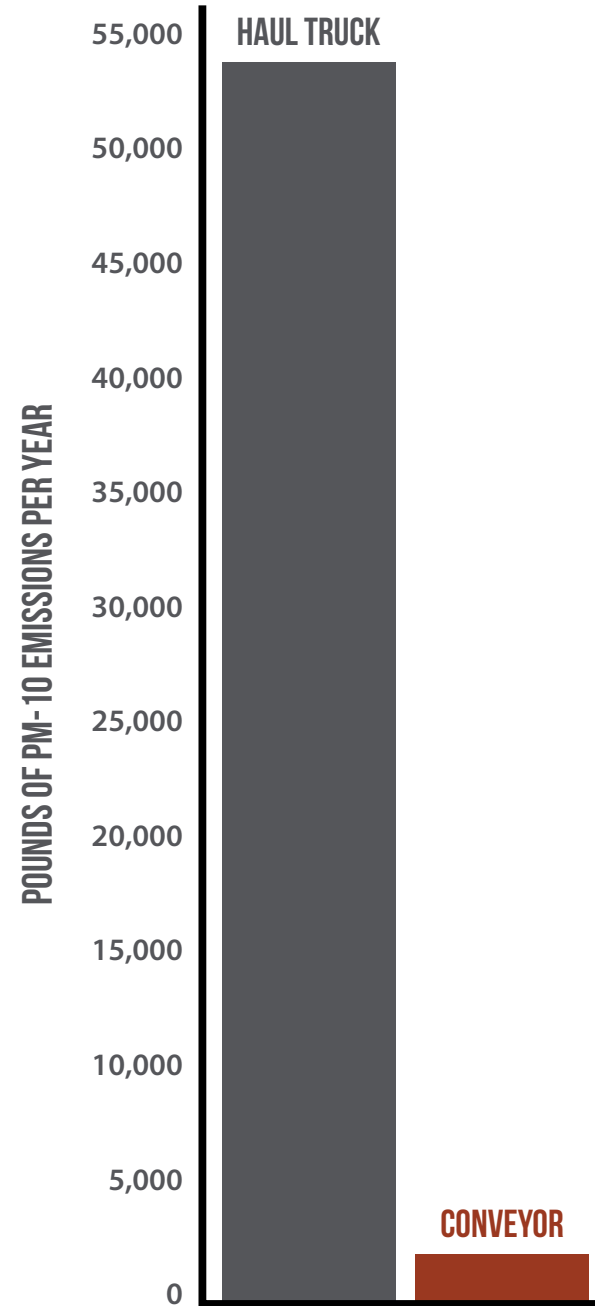


OPERATING COST COMPARISON: CONVEYOR VS HAUL TRUCK

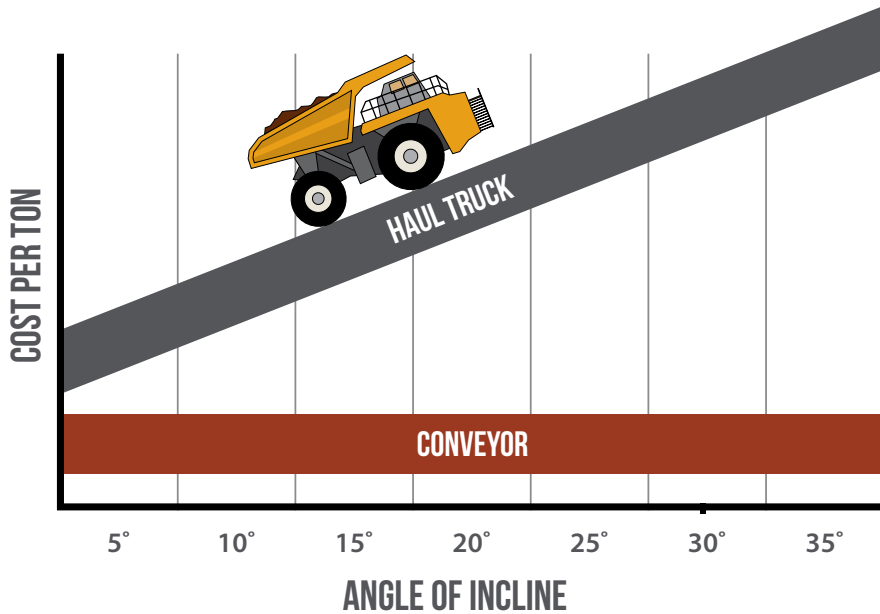
COST PER TON (2,500-FOOT TRANSFER)



ENVIRONMENTAL IMPACT



COST PER TON BY DEGREE OF INCLINE





SLIDE-PAC™ AND SLIDE-STAC™ CONVEYORS

60' / 70' / 80'

- Specially designed field truss conveyors stack one on top of the other for transport, **saving you on shipping costs.**
- A portable transfer conveyor designed for **swift, reliable and safe** setup for operation or transportation.
- Engineered truss supports head end rollers for an **effortless glide** to and from stacked mode.
- Only **one operator** for setup or teardown.

SPECIFICATIONS AND OPTIONS

GENERAL SPECS

Tons Per Hour (TPH): Up to 1,200

Belt Widths (inches): Up to 42

Belt Speed (FPM): 350

OPERATING DIMENSIONS	SLIDE-PAC CONVEYORS			SLIDE-STAC CONVEYORS	
	60'	70'	80'	60'	70'
Conveyor Length (m)	60'-0" (18.3)	70'-0" (21.3)	80'-0" (24.4)	60'-0" (18.3)	70'-0" (21.3)
Conveyor Ground Length (m)	58'-9" (18.0) to 59'-7" (18.2)	68'-10" (21.8) to 69'-7" (21.2)	79'-1" (24.1) to 79'-7" (24.3)	59'-8" (18.2)	66'-1" (20.1)
Raised Height to Center of Pulley (m)	Varies	Varies	Varies	Varies	Varies
Lowered Height to Center of Pulley (m)	Varies	Varies	Varies	Varies	Varies
TRAVEL DIMENSIONS					
Travel Length (m)	59'-8" (18.2)	73'-4" (22.3)	79'-8" (24.2)	59'-0" (18.0)	69'-0" (21.0)
Travel Height (m)	13'-6" (4.1)	13'-6" (4.1)	13'-6" (4.1)	13'-2" (4.0)	13'-5" (4.0)
Travel Width (m)	10'-1" (3.1)	9'-11" (3.0)	9'-11" (3.0)	11'-0" (3.3)	12'-0" (3.6)
Kingpin to Axle (m)	44'-9" (13.6)	54'-9" (16.6)	64'-9" (20.0)	37'-1" (11.3)	49'-2" (15.0)
Weight at Axle (kg)	19,000 (8,618)	21,000 (9,525)	22,000 (9,979)	24,700 (11,203)	28,300 (12,836)
Weight at Kingpin (kg)	10,000 (4,535)	12,700 (5,760)	13,900 (6,304)	6,800 (3,084)	11,200 (5,080)



SLIDE-STAC UNDERCARRIAGE

- EXTERRA® PRIMARY BELT CLEANER
- EXTERRA® SFL DUAL BELT CLEANER
- URATHON® RETURN ROLL
- LIGHTING PACKAGE



ROLL-ON/ ROLL-OFF CAPABILITY

- ADJUSTABLE HEIGHT DISCHARGE
- RADIAL HOPPER
- MOXIE® ROLLS
- IMPACT IDLERS



SLIDE-PAC OPERATION

- BELT COVERS
- AUTO GREASERS

See video at bit.ly/slide-pac



JUMP CONVEYORS

50' / 60' / 80' / 100'

- Flexible conveyors **easily shift in and out** of operation depending on transfer length requirement. ■
- Custom-engineered conveyor truss design **extends conveyor life** in rugged applications. ■
- Adjustable height discharge achieves more accurate **on target feeding** reducing transfer point maintenance. ■
- Tried and true Superior brand components require fewer changeouts, which **lowers operating cost**. ■

SPECIFICATIONS AND OPTIONS

GENERAL SPECS

Tons Per Hour (TPH): Up to 1,200

Belt Widths (inches): Up to 42

Belt Speed (FPM): 400

OPERATING DIMENSIONS	50'	60'	80'	100'
Conveyor Length (m)	50'-0" (15.2)	60'-0" (18.3)	80'-0" (24.4)	100'-0" (30.5)
Conveyor Ground Length (m)	45'-10" (14.0)	55'-5" (16.9)	79'-9" (24.4)	94'-9" (28.9)
Raised Height to Center of Pulley (m)	12'-9" (3.9)	12'-9" (3.9)	10'-1" (3.0)	11'-6" (3.5)
Lowered Height to Center of Pulley (m)	6'-7" (2.0)	6'-11" (2.1)	14'-1" (4.2)	7'-0" (2.4)
TRAVEL DIMENSIONS				
Travel Length - 36" Belt Width (m)	54'-8" (16.7)	64'-8" (19.8)	84'-9" (25.9)	38'-3" (11.7)
Travel Height - 36" Belt Width (m)	9'-0" (2.7)	9'-1" (2.7)	9'-0" (2.7)	13'-10" (4.2)
Travel Width - 36" Belt Width (m)	9'-2" (2.8)	9'-3" (2.8); Dual 10'-1" (3.0)	9'-1" (2.7)	9'-5" (2.8); Dual 10'-5" (3.1)
Weight at Axle - 36" Belt Width (kg)	4,553 (2,065)	4,700 (2,131)	7,000 (3,175)	8,700 (3,946)
Weight at Kingpin - 36" Belt Width (kg)	1,910 (866)	2,400 (1,088)	3,000 (1,360)	2,900 (1,315)



EXTERRA® PRIMARY BELT CLEANER

- EXTERRA® PRIMARY BELT CLEANER
- EXTERRA® SFL DUAL BELT CLEANER
- HIGHWAY PACKAGES
- RADIAL HOPPER
- ADJUSTABLE HEIGHT DISCHARGE



DISCHARGE HOOD

- FIXED HEIGHT SUPPORT
- DISCHARGE HOOD
- LANDING LEGS
- TOWING EYE
- MOXIE® ROLLS



ROAD PORTABLE

- URATHON® RETURN ROLL
- IMPACT IDLERS
- BELT COVERS
- AUTO GREASERS
- BELT SCALE



STACKABLE CONVEYORS

50' / 60'

- **Greatly reduce freight** when you transport up to eight Stackable Conveyors on one trailer.
- Multipurpose conveyors can be used to **transfer or stockpile** material.
- **Numerous options** to best fit the conveyors into your desired applications.
- Auction statistics confirm Superior Stackable Conveyors have the **highest resale value** in the industry.

FEATURES



STACKABLE PLUS WITH BEND



STACKABLE PLUS WITH UNDERCARRIAGE



TOWING EYE



HEAD SUPPORTS



MODULAR HOPPER W/ STACKABLES



MODULAR HOPPER W/ STACKABLES

- FIFTH WHEEL HITCHES
- HIGHWAY PACKAGES
- 3 CONVEYOR SUPPORT OPTIONS
- PIT OR ROAD PORTABLE AXLES
- 9' HORIZONTAL BEND
- EXTERRA® PRIMARY BELT CLEANER

- MOXIE® ROLLS
- IMPACT LOAD AREA
- RADIAL HOPPER
- PINNING TAB SUPPORT BRACKETS
- URATHON® RETURN ROLL
- TELESCOPING LEGS

- TOW EYE
- ANCHOR PIVOT PLATE

PHOTO GALLERY



SPECIFICATIONS

CONVEYOR	STACKABLE	STACKABLE PLUS
Radial Receiving Hopper	○	○
Exterra® Belt Cleaner	○	○
Backstop	○	○
3-Ply Belt Upgrade	○	○
Vulcanized Splice	○	○
Head and Tail Supports	○	○
Heavier Truss	—	●
Truss Bends for Low Profile Tail	—	○
Undercarriage with Swivel Box	—	○
Tow Eye	—	○
Anchor Pivot Plate	—	○

● STANDARD ○ AVAILABLE — N/A

GENERAL SPECS

Tons Per Hour (TPH): **Up to 850** Belt Widths (inches): **Up to 48** Incline Angle: **18°**

CONVEYOR	50'	60'	50' PLUS	60' PLUS	50' PLUS W/ BEND	60' PLUS W/ BEND
Conveyor Length (m)	50'-0" (15.2)	60'-0" (18.3)	50'-0" (15.2)	60'-0" (18.3)	50'-0" (15.2)	60'-0" (18.3)
Conveyor Ground Length (m)	45'-8" (13.9)	55'-2" (16.8)	49'-2" (15.0)	55'-10" (17.0)	51'-4" (15.6)	61'-5" (18.7)
Raised Height to Center of Pulley (m)	Up to 17'-11" (5.5)	Up to 21'-0" (6.4)	16'-7" (5.0)	19'-8" (6.0)	15'-5" (4.7)	18'-6" (5.6)
Lowered Height to Center of Pulley (m)	12'-5" (3.8)	12'-5" (3.8)	9'-0" (2.7)	7'-11" (2.4)	7'-3" (2.2)	9'-0" (2.7)
Anchor Pivot to Center of Axle (m)	25'-5" (7.8)	31'-2" (9.5)	26'-10" (8.2)	32'-9" (10.0)	28'-2" (8.6)	38'-10" (11.8)

STACKABLE & STACKABLE PLUS CONVEYOR	MAX. STOCKPILE HEIGHT (M)	MAX. STOCKPILE CAPACITY CUBIC YARD (M3)	18° STRAIGHT INCLINE TONS (MT)
50'-0"	18'-6" (5.7)	430 (328)	580 (526)
60'-0"	21'-6" (6.6)	680 (519)	920 (834)

STACKABLE PLUS CONVEYOR W/ BEND	MAX. STOCKPILE HEIGHT (M)	MAX. STOCKPILE CAPACITY CUBIC YARD (M3)	19° INCLINE W/ BEND TONS (MT)
50'-0"	19'-6" (6.0)	490 (374)	660 (598)
60'-0"	22'-6" (6.9)	780 (596)	1100 (997)



RAZERTAIL® TRUCK UNLOADER

48" / 72"

Directly **transfer material from truck to stockpile** and remove extra handling to guarantee product quality. ■

Unload times as little as **60 seconds per truck load**. ■

While conventional truck unloaders can require days to install, these **portable units take just minutes to be production ready**. ■

Our **patented self-cleaning ramps** ensure any extra material is fed to the hopper after a truck's exit, limiting maintenance. ■

HIGHLIGHTS



- 1/ **TAIL PULLEY ACCESS:** Hinged cover allows for easy maintenance access to take-ups and tail pulley.
- 2/ **SELF CLEANING RAMPS:** Patented, hydraulically controlled ramps quickly dumps any spilled material into the hopper.
- 3/ **DRIVE OVER GRATES:** Bolt on design allows for easy maintenance access under the grates. In addition, a variety of designs handle material up to 8" minus.
- 4/ **OPERATOR PLATFORM:** Standard at the tail end to increase operator visibility and safety.
- 5/ **POWERFOLD:** Patented powerfold protects hydraulic cylinder rods from debris during operation.

- 6/ **WRAP DRIVE:** Combining a drive and a snub pulley creates higher wrap factor for better belt tensioning and reduced material spillage. The install location is conveniently accessible from ground level.
- 7/ **TRUSS FRAME:** Compared to channel frame designs, this robust structure is less prone to bending.
- 8/ **ADJUSTABLE HEIGHT DISCHARGE:** Hit multiple height feed points and eliminate the need for a transfer conveyor when feeding a stacker.
- 9/ **HOLD DOWN WHEELS:** Large surface area ensures effectiveness in operation. Spokes in wheels prevents material build up.

- 10/ **FLOW GATE:** Designed to accommodate a higher flow of material while avoiding spillage.
- 11/ **IMPACT IDLERS:** These rubber idlers absorb shock to protect belting from premature damage.
- 12/ **CHEVRON® PULLEY:** Patented v-shaped pulley deflects fugitive material to extend pulley life and lessen belt wear. In addition, constant belt contact reduces vibration and noise generation by 50 decibels.

FEATURES AND OPTIONS



ONBOARD POWER CUTS RELIANCE ON ELECTRICITY



AREA LIGHTING FOR CLEAR SIGHTLINES



HYDRAULIC ONBOARD TRUCK RAMPS



SINGLE OR DUAL OPERATOR PLATFORM



CYLINDER RODS PROTECTED DURING OPERATION



UHMW PLATES CONTAIN MATERIAL TO BELT



BOLT ON HOPPER GRATING



ADJUSTABLE FLOW GATE CONTROLS RATES



WRAP DRIVE PREVENTS BELT SLIPPAGE

SPECIFICATIONS

OPERATING DIMENSIONS	48"	48" W/ ADJ. DISCHARGE	72"	72" W/ ADJ. DISCHARGE	72" HAUL TRUCK
Tons Per Hour (tonnes/hour)	1,000 (907)	1,000 (907)	1,500 (1,360)	1,500 (1,360)	2,000 (1,814)
Maximum Material Size (mm)	4" Minus (101)	4" Minus (101)	4" Minus (101)	4" Minus (101)	8" Minus (203)
Cycle Time per Minute (tonnes)	2.5 for 30 Tons (27)	2.5 for 30 Tons (27)	2.5 for 30 Tons (27)	2.5 for 30 Tons (27)	2.5 for 40 Tons (36)
Earth Ramp Height (mm)	32" (812)	32" (812)	32" (812)	32" (812)	43" (1,092)
Discharge Height (m)	6'-11" (1.9)	7'-2" (2.2) - 11'-5" (3.5)	8'-1" (2.4) - 12'-8" (3.8)	8'-1" (2.4) - 12'-8" (3.8)	6'-9" (2.0) - 10'-3" (3.1)
Conveyor Length (m)	53'-6" (16.3)	63'-0" (19.2)	78'-7" (24.0)	67'-6" (20.5)	74'-9" (22.8)
Conveyor Width (m)	6'-4" (2.0)	6'-4" (2.0)	7'-4" (2.2)	7'-8" (2.3)	9'-4" (2.8)
Load Ramp Width (m)	10'-2" (3.0)	10'-2" (3.0)	10'-4" (3.1)	10'-0" (3.0)	7'-6" (2.3)
TRAVEL DIMENSIONS					
Travel Length (m)	52'-4" (16.0)	46'-8" (14.2)	52'-6" (16.0)	52'-6" (16.0)	74'-2" (22.6)
Travel Height (m)	10'-2" (3.0)	13'-1" (4.0)	12'-6" (3.8)	12'-8" (3.9)	13'-11" (4.2)
Travel Width (m)	12'-1" (3.7)	11'-1" (3.3)	11'-10" (3.6)	11'-10" (3.6)	13'-8" (4.1)
Weight at Axle (kg)	15,700 (7,121) / 19,800 (8,981)	19,500 (8,845) / 23,700 (10,750)	27,000 (12,246)	26,400 (11,974) / 29,000 (13,154)	48,800 (22,135)
Weight at Kingpin (kg)	12,200 (5,533) / 16,300 (7,393)	19,100 (8,663) / 19,600 (8,890)	18,000 (8,164)	19,400 (8,799) / 24,000 (10,886)	39,900 (18,098)
Axles	Single	Tandem	Tandem	Tandem	Tridem

See video at bit.ly/razertail

APPLICATION PHOTOS



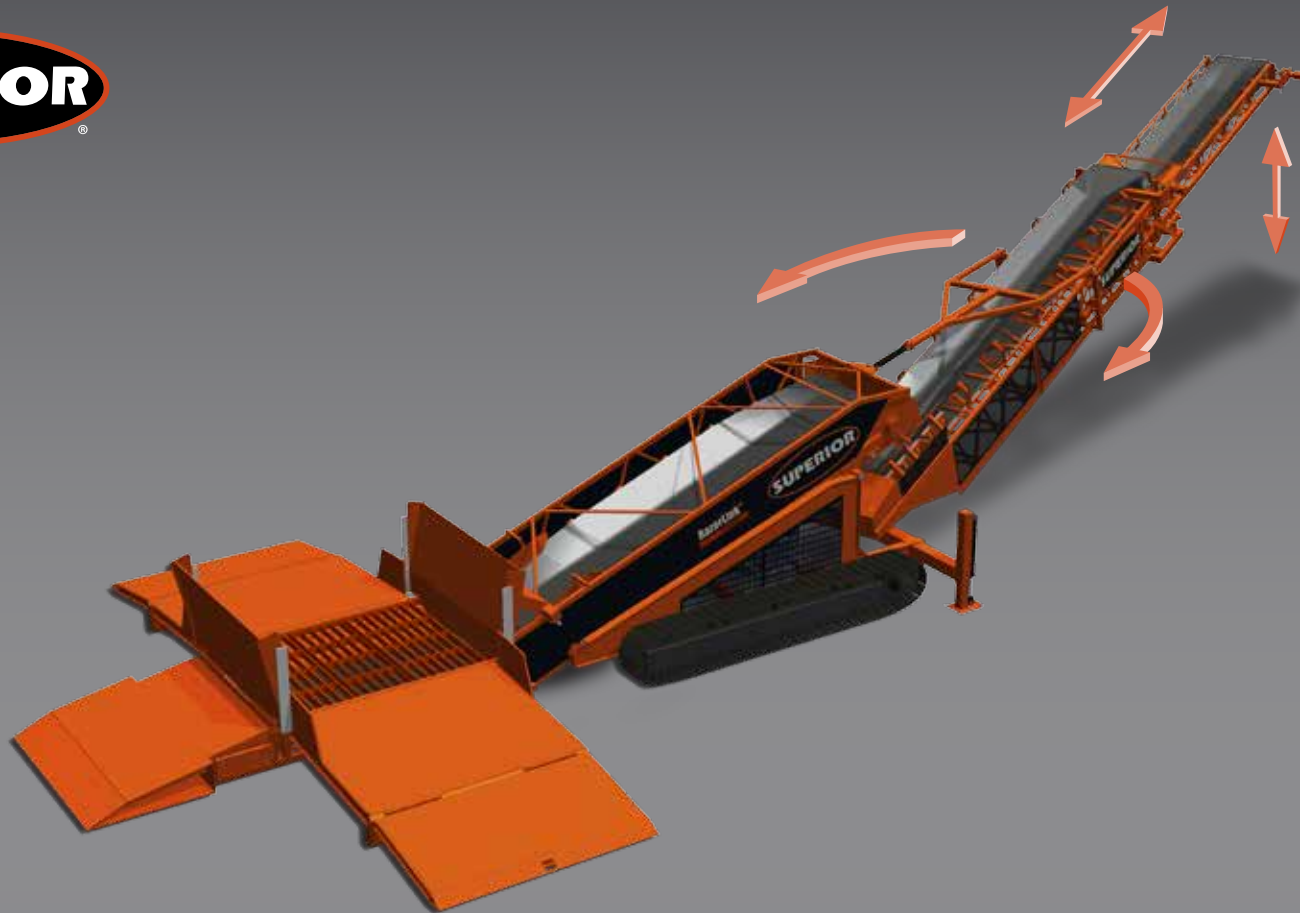
END DUMP TRUCKS TO MATERIAL STOCKPILE



BELLY DUMP TRAILER TO RAILCARS



30 TON HAUL TRUCK TO BARGE



RAZERLINK™ CONVEYOR

- **Multi-functional machine** for several applications including truck unloading, material transfer, stockpiling and vessel loading.
- Numerous options to **customize** unit to best fit application duties.
- One time handling of material **maintains high quality material** spec.
- Combining mobility with telescoping conveyor technology **limits downtime** and accelerates material handling.

FEATURES AND OPTIONS

DISCHARGE CONVEYOR



- Fixed length conveyor
- Fixed length with powerfold
- Luffing (raising/lowering) conveyor
- Slewing/radial conveyor
- Telescoping conveyor

FEED METHODS



- Drive over ramps for belly dump trucks
- Back up ramp for end dump trucks
- Feeder hopper for loaders

MOBILITY OPTIONS



- Conveyor tracks
- Drive tires
- Towable tires

APPLICATIONS

- Mobile barge loading
- Mobile transfer conveyor
- Mobile railcar loading
- Stockpiling at highway construction projects
- Cost effective mobile heap leach system

See video at bit.ly/razerlink

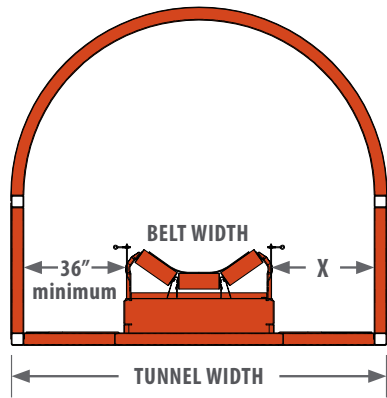


TUNNEL RECLAIM

8' / 10' / 12'

- Maintain a **continuous feed** of material to your processing plant.
- **Decrease your dependency** on expensive loaders and workforce.
- Allows for **flexible modifications** in the future without replacing entire system.
- Designed for your specific application and **shipped to site pre-assembled.**

TUNNEL SIZING

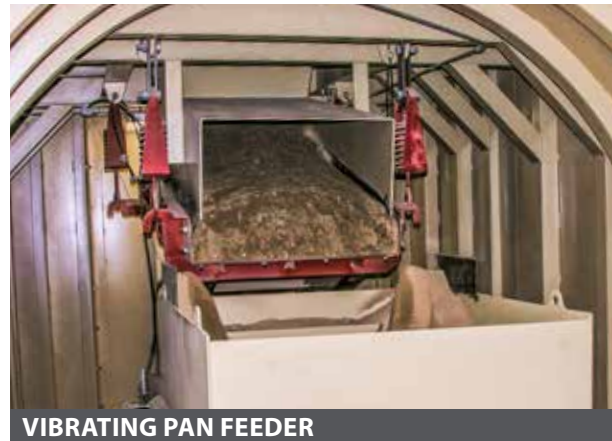


FEEDER OPTIONS



BELT FEEDERS

PHOTO GALLERY



VIBRATING PAN FEEDER



DETERMINING "X" WIDTH				
Tunnel Width (m)	Available Belt Widths			
	30" (cm)	36" (cm)	42" (cm)	48" (cm)
8'-0" (2.7)	18" (45)	12" (30)	6" (15)	N/A
10'-0" (3.3)	42" (106)	36" (91)	30" (76)	24" (61)
12'-0" (3.9)	66" (167)	60" (152)	54" (137)	48" (121)

FEATURES

- APPLICATION SPECIFIC
- PORTABLE VERSION AVAILABLE
- SHIP TO SITE PREASSEMBLED
- BELT FEEDERS
- VIBRATING PAN FEEDER
- CLAM GATE FEEDER



CLAM GATE FEEDER





PASSPORT™ MOBILE SHIPLOADER

110' / 130' / 150' / 170' / 190'

- Loading at least **three hatches, parallel to vessel, from the same feed point** limits moves and reduces downtime. ■
- Designed to **move inline, transversely and radially** for fast and efficient conveyor relocation. ■
- Telescopic technology allows conveyor to achieve 45% more extension to **fully trim hatches**. ■
- Experienced in design and manufacturing of high capacity mobile conveyors producing up to **5,000 tons per hour**. ■

HIGHLIGHTS



1/ **STINGER COVER:** Sliding tarp retracts and extends with conveyor to protect material and prevent dust.

2/ **DISCHARGE CHUTE:** Telescoping chute equipped with 360° trimming spoon.

3/ **STINGER CONVEYOR:** Reduces moves by extending and retracting to load multiple hatches from one feed point.

4/ **CAM ROLLERS:** Patented center pivot design supports the weight of the entire stinger conveyor equally across all rollers, which reduces stress on frame and provides longer life.

5/ **STINGER SAFETY STOPS:** Designs that protect your investment. Safety stops immediately react in the event of stinger cable failure, minimizing structural damage.

6/ **FB® UNDERCARRIAGE:** Patented for maximum undercarriage support and the most rigid lateral stability. Load sharing hydraulic cylinders add even greater structural support and safety.

7/ **3 POSITION AXLE:** Allows lateral travel parallel to ship, towing perpendicular to dock and radial travel for hatch loading.

8/ **ONBOARD POWER:** Self-contained diesel engines allow flexibility to quickly move anywhere throughout the port.

9/ **MOBILE PIVOT BASE:** 360° rotation at the tail of the conveyor permits lightning fast relocation.

10/ **SEALING SYSTEM:** Prevents material spillage in load zone by maintaining a tight seal between belt and hopper skirting.

11/ **MAINFRAME COVERS:** Rigid covers reduce dust and protect material from environmental hazards.

12/ **MULTIFUNCTIONAL MACHINE:** Same conveyor system can load, unload and stockpile material.

Australian stevedoring firm, Bulk Conveying Equipment, chose Superior brand equipment for its strength and heavy-duty construction, its customization capabilities to handle the lightest to heaviest abrasive materials; and its transfer point mobility options.

ENVIRONMENTAL OPTIONS

CORROSION PROTECTION OPTIONS

- Galvanized steel finish.
- Epoxy steel coating.
- Corrosion resistant components.
- Stainless steel fittings.

DUST SUPPRESSION OPTIONS

- Dust collection system.
- Sealed transfer points.
- Conveyor covers.
- Drip pans.
- Telescoping discharge chutes.

COLD WEATHER PROTECTION OPTIONS

- Fracture resistant steel.
- Heaters for motors, gear boxes and hydraulics.
- Arctic grade fluids.
- Thermal sleeve insulators.
- Freeze resistant motors and hoses.
- Fully enclosed conveyor.



GALVANIZED FINISH



EPOXY STEEL COATING



DUST COLLECTION SYSTEM



STAINLESS STEEL DRIP PANS



THERMAL SLEEVE INSULATORS



FULLY ENCLOSED CONVEYOR

OPTIONS

- DISCHARGE CHUTE
- TRIMMING SPOON
- SLIDING TARP STINGER COVER
- MAINFRAME COVERS
- DRIP PANS
- DUST COLLECTION SYSTEMS
- GALVANIZED STEEL FINISH
- EPOXY STEEL COATING
- CORROSION RESISTANT COMPONENTS
- STAINLESS STEEL FITTINGS
- FULLY ENCLOSED CONVEYOR
- CONVEYOR WALKWAY
- ONBOARD POWER
- MODULAR HOPPERS
- AREA LIGHTING
- MOBILE PIVOT BASE
- REMOTE CONTROL
- MOXIE® ROLLS
- URATHON® RETURN ROLLS
- AUTO GREASERS
- IMPACT BED
- LOAD ZONE SEALING SYSTEM



SHIP LOADING



BARGE LOADING



UNLOADING APPLICATIONS



STOCKPILE CAPACITIES

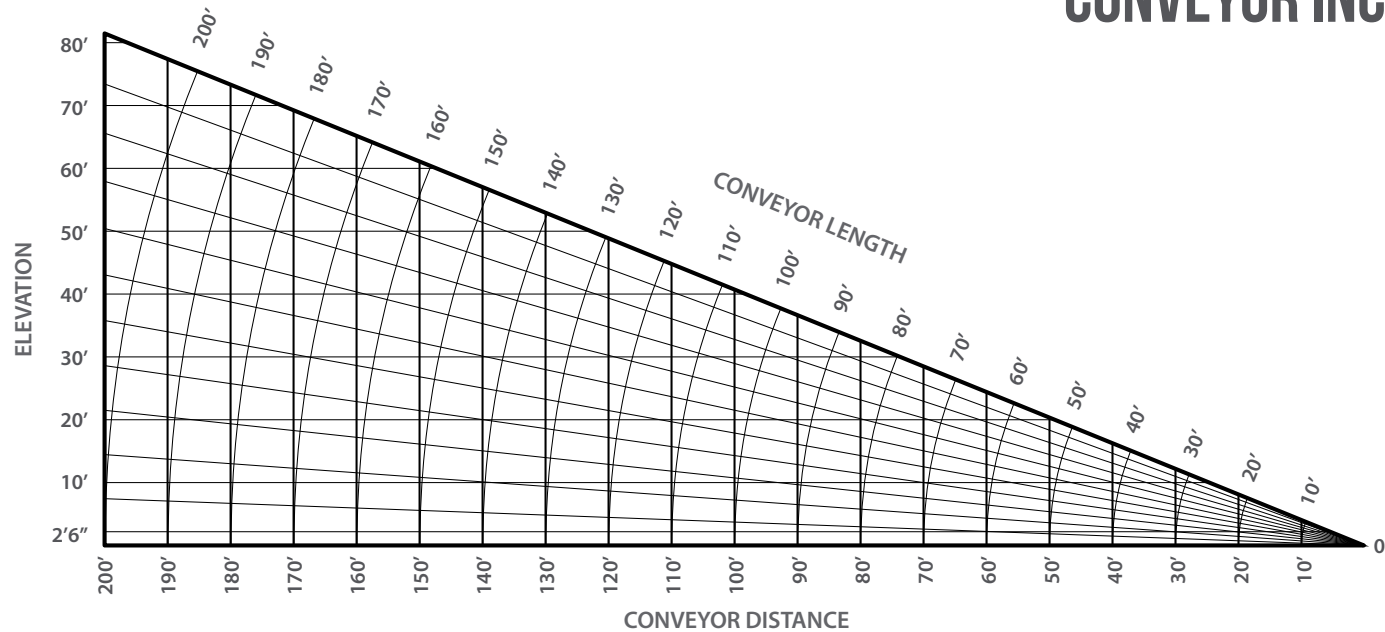
MAXIMUM STOCKPILE CAPACITIES (MANUAL PILES) ASSUMPTIONS BASED ON MATERIAL WHICH HAS A 37° ANGLE OF REPOSE AND 100 PCF (1.6 t/m³) MATERIAL DENSITY.

Conveyor Length	Stockpile Height ft x in (m)	Stockpile Volume in Cubic Yards (m ³)				Stockpile Volume in Tons (MT)			
		Conical	90°	180°	270°	Conical	90°	180°	270°
110 TSFD	39'-0" (11.8)	4,900 (3,200)	19,700 (15,000)	34,400 (26,300)	49,200 (37,600)	6,600 (6,000)	26,600 (24,100)	46,500 (42,200)	66,500 (60,300)
130 TSFD	42'-0" (12.8)	6,200 (4,700)	27,300 (20,900)	48,300 (37,000)	69,300 (53,000)	8,400 (7,600)	36,800 (33,400)	65,200 (59,100)	93,600 (84,900)
130 TSSA	45'-6" (13.8)	6,700 (5,100)	27,700 (21,200)	48,700 (37,200)	69,700 (53,300)	9,000 (8,200)	37,400 (34,000)	65,800 (59,600)	94,200 (85,500)
136 TSFD-LP	41'-6" (12.6)	6,900 (5,300)	30,000 (23,000)	53,300 (40,800)	76,500 (58,500)	9,300 (8,400)	40,600 (36,800)	71,900 (65,200)	103,200 (93,600)
150 TSFD	50'-0" (15.2)	9,300 (7,100)	41,000 (31,300)	72,600 (55,500)	104,300 (79,800)	12,600 (11,400)	55,300 (50,200)	98,100 (89,000)	140,800 (127,700)
150 TSSA	50'-0" (15.2)	9,200 (7,000)	40,100 (30,700)	71,000 (54,300)	102,000 (78,000)	12,400 (11,200)	54,100 (49,000)	95,900 (87,000)	137,700 (124,900)
158 TSFD-LP	47'-0" (14.3)	9,700 (7,400)	40,900 (31,300)	72,200 (55,200)	103,500 (79,100)	13,100 (11,900)	55,200 (50,100)	97,500 (88,400)	139,700 (126,800)
170 TSSA	58'-0" (17.6)	12,900 (9,900)	56,100 (42,900)	99,300 (76,000)	142,400 (108,900)	17,500 (15,900)	75,800 (68,800)	134,000 (121,600)	192,300 (174,500)
190 TSSA	66'-0" (20.1)	18,700 (14,300)	82,300 (63,000)	145,800 (111,500)	209,300 (160,000)	25,300 (23,000)	111,100 (100,800)	196,800 (178,500)	282,600 (256,400)
72x190 TSPP	61'-0" (18.6)	16,700 (12,800)	75,700 (57,900)	134,800 (103,000)	193,800 (148,200)	22,500 (20,400)	102,200 (92,700)	181,600 (164,700)	261,600 (237,300)

PHOTO GALLERY



CONVEYOR INCLINE CHART



MAXIMUM BELT CAPACITIES - TPH (MT)

Based on 100 PCF (1.6 t/m³) material density. 100 FPM belt speed, 100% full belt

Trough Angle	Surcharge Angle	BELT WIDTH					
		18" (m)	24" (m)	30" (m)	36" (m)	42" (m)	48" (m)
20°	20°	50 (45)	96 (87)	157 (142)	230 (209)	320 (290)	430 (390)
	25°	56 (51)	108 (98)	175 (159)	260 (236)	360 (327)	480 (435)
	30°	63 (57)	120 (109)	195 (177)	290 (263)	400 (363)	530 (481)
35°	10°	-	102 (93)	167 (151)	248 (225)	344 (312)	457 (415)
	20°	-	122 (111)	200 (181)	295 (268)	408 (370)	540 (490)
	25°	-	132 (120)	215 (195)	318 (288)	442 (401)	645 (585)
	30°	-	142 (129)	232 (210)	343 (311)	475 (431)	630 (572)
45°	5°	-	106 (96)	175 (159)	258 (234)	358 (325)	475 (431)
	10°	-	115 (104)	187 (170)	278 (252)	386 (350)	510 (463)
	20°	-	132 (120)	215 (195)	318 (288)	440 (399)	584 (530)
	25°	-	140 (127)	230 (209)	340 (308)	470 (426)	623 (565)
	30°	-	170 (154)	244 (221)	360 (327)	500 (454)	660 (599)

STOCKPILE CAPACITIES

MAXIMUM STOCKPILE CAPACITIES (MANUAL PILES) ASSUMPTIONS BASED ON MATERIAL WHICH HAS A 37° ANGLE OF REPOSE AND 100 PCF (1.6 t/m³) MATERIAL DENSITY.

Conveyor Length	Stockpile Height ft x in (m)	Stockpile Volume in Cubic Yards (m ³)				Stockpile Volume in Tons (MT)			
		Conical	90°	180°	270°	Conical	90°	180°	270°
18° INCLINE									
50'-0"	18'-6" (5.7)	430 (330)	1,700 (1,300)	2,900 (2,200)	4,200 (3,200)	580 (530)	2,300 (2,100)	4,000 (3,600)	5,600 (5,100)
60'-0"	21'-6" (6.6)	680 (520)	2,700 (2,100)	4,800 (3,700)	6,800 (5,200)	920 (840)	3,700 (3,400)	6,400 (5,800)	9,200 (8,300)
80'-0"	28'-0" (8.5)	1,500 (1,200)	6,000 (4,600)	10,500 (8,000)	15,000 (11,500)	2,000 (1,800)	8,100 (7,300)	14,200 (13,000)	20,200 (18,300)
95'-0"	32'-0" (9.8)	2,300 (1,800)	9,600 (7,300)	16,900 (12,900)	24,200 (18,500)	3,100 (2,800)	13,000 (11,800)	22,800 (20,700)	32,700 (29,700)
100'-0"	34'-0" (10.4)	2,700 (2,100)	11,100 (8,500)	19,500 (14,900)	28,600 (21,400)	3,600 (3,300)	15,000 (13,600)	26,400 (23,900)	38,000 (34,500)
110'-0"	37'-0" (11.3)	3,500 (2,700)	14,500 (11,100)	25,600 (19,600)	36,600 (28,000)	4,700 (4,300)	19,600 (17,800)	34,500 (31,300)	49,400 (44,800)
125'-0"	42'-0" (12.8)	4,900 (3,700)	20,800 (15,900)	36,700 (28,100)	52,600 (40,200)	6,700 (6,100)	28,100 (25,500)	49,600 (45,000)	71,100 (64,500)
150'-0"	49'-0" (14.9)	8,200 (6,300)	35,000 (26,800)	61,900 (47,300)	88,700 (67,800)	11,100 (10,100)	47,300 (42,900)	83,500 (75,700)	119,700 (108,600)
180'-0"	59'-0" (18.0)	13,000 (10,600)	59,200 (45,300)	104,600 (80,000)	150,000 (114,700)	18,600 (16,900)	80,000 (72,600)	141,200 (128,100)	202,500 (183,700)
200'-0"	65'-0" (19.8)	18,600 (14,200)	80,300 (61,400)	141,900 (108,800)	203,600 (155,700)	25,100 (22,800)	108,300 (98,200)	191,600 (173,800)	274,900 (249,400)
110'TSFD	39'-0" (11.9)	4,900 (3,200)	19,700 (15,000)	34,400 (26,300)	49,200 (37,600)	6,600 (6,000)	26,600 (24,100)	46,500 (42,200)	66,500 (60,300)
130'TSFD	42'-0" (12.8)	6,200 (4,700)	27,300 (20,900)	48,300 (37,000)	69,300 (53,000)	8,400 (7,600)	36,800 (33,400)	65,200 (59,100)	93,600 (84,900)
130'TSSA	45'-6" (13.9)	6,700 (5,100)	27,700 (21,200)	48,700 (37,200)	69,700 (53,300)	9,000 (8,200)	37,400 (34,000)	65,800 (59,600)	94,200 (85,500)
136'TSFD-LP	41'-6" (12.7)	6,900 (5,300)	30,000 (23,000)	53,300 (40,800)	76,500 (58,500)	9,300 (8,400)	40,600 (36,800)	71,900 (65,200)	103,200 (93,600)
150'TSFD	50'-0" (15.2)	9,300 (7,100)	41,000 (31,300)	72,600 (55,500)	104,300 (79,800)	12,600 (11,400)	55,300 (50,200)	98,100 (89,000)	140,800 (127,700)
150'TSSA	50'-0" (15.2)	9,200 (7,000)	40,100 (30,700)	71,000 (54,300)	102,000 (78,000)	12,400 (11,200)	54,100 (49,000)	95,900 (87,000)	137,700 (124,900)
158 TSFD-LP	47'-0" (14.3)	9,700 (7,400)	40,900 (31,300)	72,200 (55,200)	103,500 (79,100)	13,100 (11,900)	55,200 (50,100)	97,500 (88,400)	139,700 (126,800)
170'TSSA	58'-0" (17.7)	12,900 (9,900)	56,100 (42,900)	99,300 (76,000)	142,400 (108,900)	17,500 (15,900)	75,800 (68,800)	134,000 (121,600)	192,300 (174,500)
190'TSSA	66'-0" (20.1)	18,700 (14,300)	82,300 (63,000)	145,800 (111,500)	209,300 (160,000)	25,300 (23,000)	111,100 (100,800)	196,800 (178,500)	282,600 (256,400)
72'x190'TSPP	61'-0" (18.6)	16,700 (12,800)	75,700 (57,900)	134,800 (103,000)	193,800 (148,200)	22,500 (20,400)	102,200 (92,700)	181,600 (164,700)	261,600 (237,300)
22° INCLINE									
80'-0"	33'-0" (10.1)	2,500 (1,900)	8,600 (6,600)	14,900 (11,400)	21,100 (16,100)	3,300 (3,000)	11,700 (10,600)	20,100 (18,200)	28,500 (25,900)
100'-0"	40'-0" (12.2)	4,500 (3,500)	16,300 (12,500)	28,000 (21,400)	39,700 (30,400)	6,100 (5,500)	21,900 (20,000)	37,700 (34,200)	53,600 (48,600)
125'-0"	50'-0" (15.2)	8,500 (6,500)	31,000 (23,700)	52,900 (40,500)	75,000 (57,400)	11,400 (10,300)	41,400 (37,600)	71,400 (64,800)	101,400 (92,000)

SUPERIOR COMPONENTS



CEMA IDLERS



MOXIE® ROLLS



IMPACT ROLLS



RETURN ROLLS



URATHON® RETURN ROLLS



SPIRAL URATHON® RETURN ROLLS



NAVIGATOR® RETURN TRAINERS



SELF-ALIGNING IDLERS



V-RETURN IDLERS



CHEVRON® PULLEYS



DRUM PULLEYS



WING PULLEYS

SUPERIOR COMPONENTS



CORE SYSTEMS® DESIGN



TAKE-UPS



V-PLOWS



EXTERRA® PRIMARY BELT CLEANER



EXTERRA® SFL DUAL CLEANER



EXTERRA® REPLACEMENT BLADES



SEALING SYSTEM



IMPACT BED



BELT SCALE



BELT COVERS



FLEXIBLE GUARD PANELS



AUTO GREASER





SUPERIOR-IND.COM

