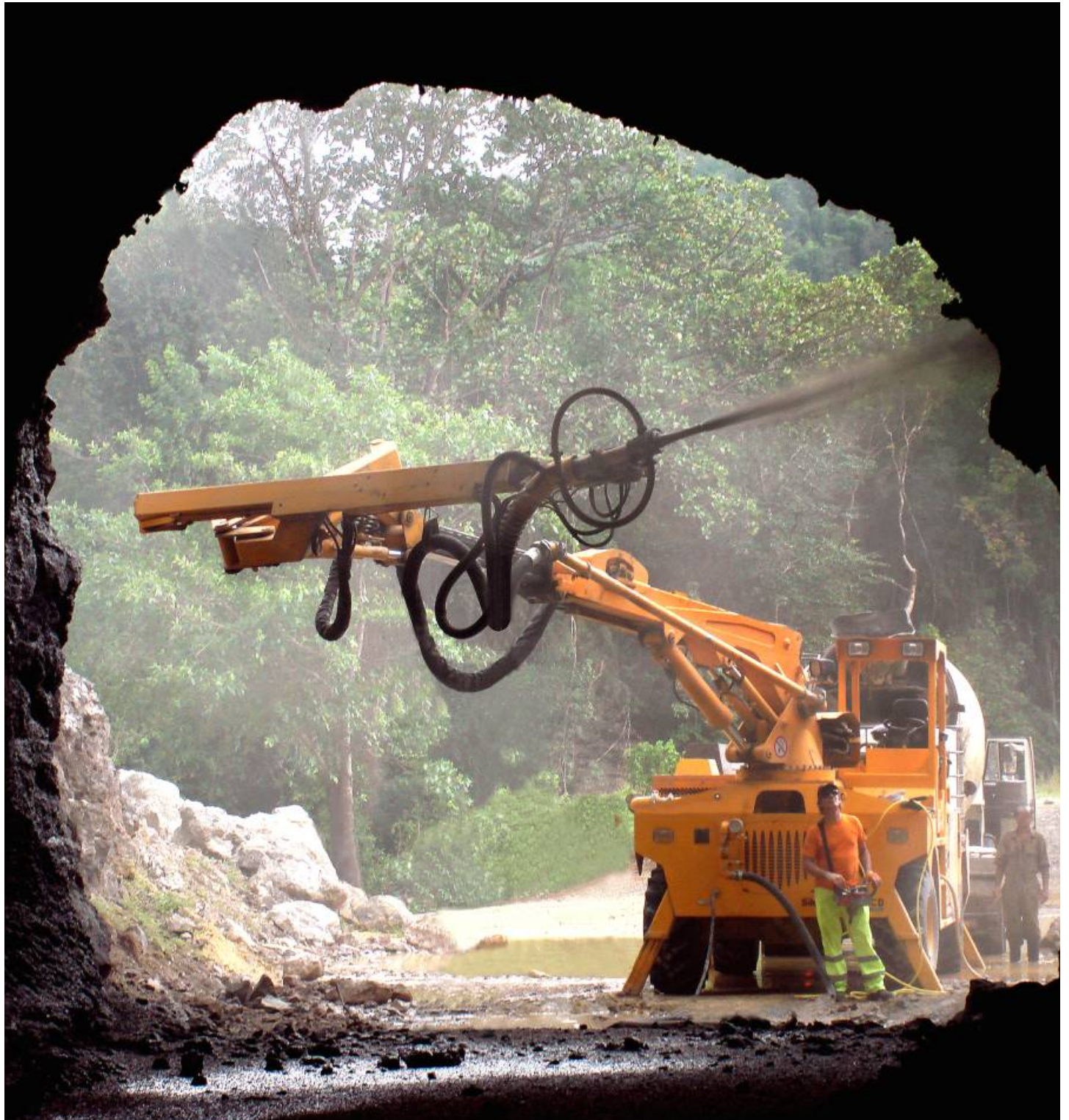


Sika® - PM 500

Universal concrete spraying system
High reach on a modular compact spraying equipment

Putzmeister

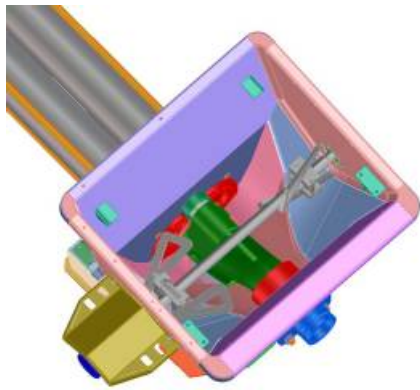


Robust technology: concrete pump, hopper, and hydraulic system

- Fewer switchovers with a very smooth running thanks to long stroke and high volume conveying cylinders.
- Extremely wear-resistant.
- Low maintenance modular pump unit.
- High cylinder filling degree.
- Shorter maintenance intervals thanks to the internally chromed delivery cylinders.
- Hopper filling height 1300 mm.
- High diameter pipeline of 80 mm guarantees smooth pumping, low wear and prevents blockages.



Specially designed hopper with agitator and vibrator grill for shotcrete operation with steel / polymer fibres.



Compact and versatile: the chassis

- Diesel engine in compliance with 97/68/EC Tier-3 directive.
- 4-wheel drive.
- 4-wheel steering with crab mode.
- 180° swivelling cabin always front to driving direction.
- High ground clearance. Its entry and exit angle guarantee excellent performance in all terrain conditions.
- Driving system with two gears enables the machine to drive at high speed in flat areas and climb 40% slopes in the low gear.



Precise, fast and strong: the spraying boom

- Thanks to the articulated and telescopic kinematics the operation is easy and smooth.
- The lance automatic hydraulic parallel movement makes it easy to concentrate on nozzle control.
- Nutation and lance automatic telescopic movements help the operator to concentrate on spraying quality.
- Automatic antistick system for the telescopic arms facilitate maintenance and increase lifetime.

	Spraying	Unfold
	Max. Reach	Min. Section
Vertical	17 m	4 m
Horizontal	15 m	7,7 m

Ergonomic and reliable: control panel and remote control

- Fully automatic PLC for high-precision synchronization of additive dosing unit and air compressor.
- Ergonomic "follow me" design assures right operation.
- Fully featured remote control giving freedom to the operator all around the machine.

Energy on board: the air compressor*

- Optional compressor, specially designed and compactly integrated into the chassis.
- Screw compressor fits in perfectly with the delivery system, assuring long lifetime with low maintenance.

* Available as a standard at Sika® PM 500 PC

Accuracy for quality concrete spraying: the additive dosing unit

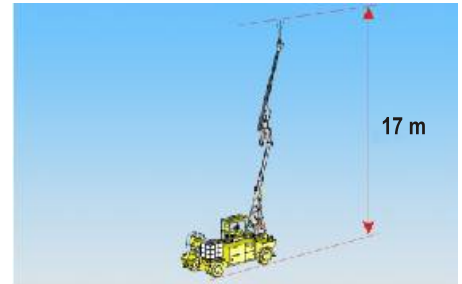
- Electronically controlled peristaltic pump with continuous flow.
- Efficient and accurate dosification of all type of additives used nowadays.
- Low wear and easy maintenance.

Added value: maintenance systems

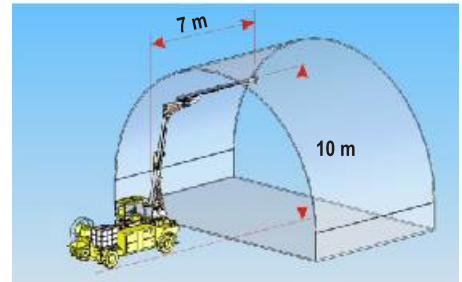
- Serial high pressure water pump and water tank for simple and autonomous cleaning of the machine.
- Fast and easy dismantling of the concrete pump for maintenance.
- Automatic antistick system and cleaning scrapers for telescopic arms.



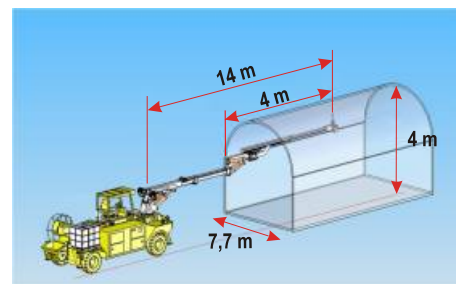
Thanks to its advanced technology and large working range the Sika® PM 500 concrete spraying system is a suitable and smart solution for the stabilisation and support of medium and large tunnels, chambers and slopes.



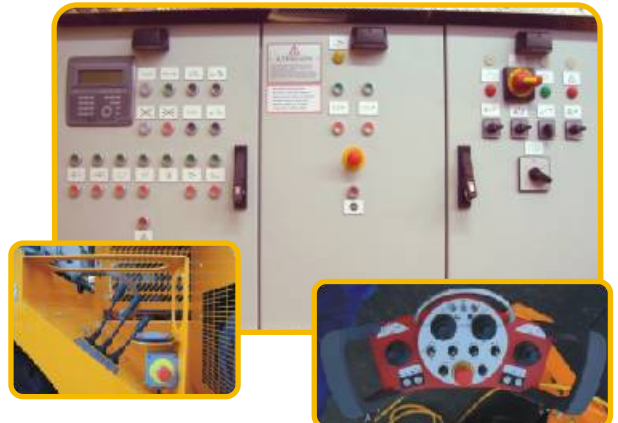
High reach spraying arm to work in large tunnel sections and outer slopes.

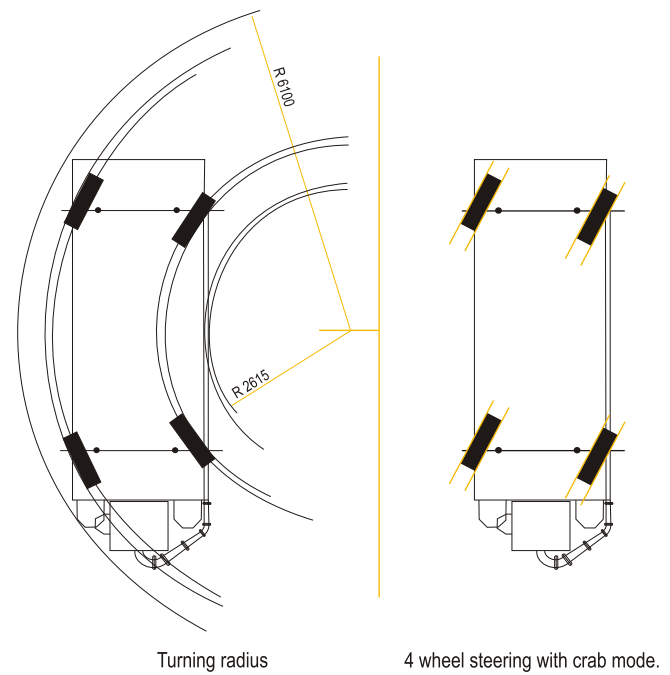
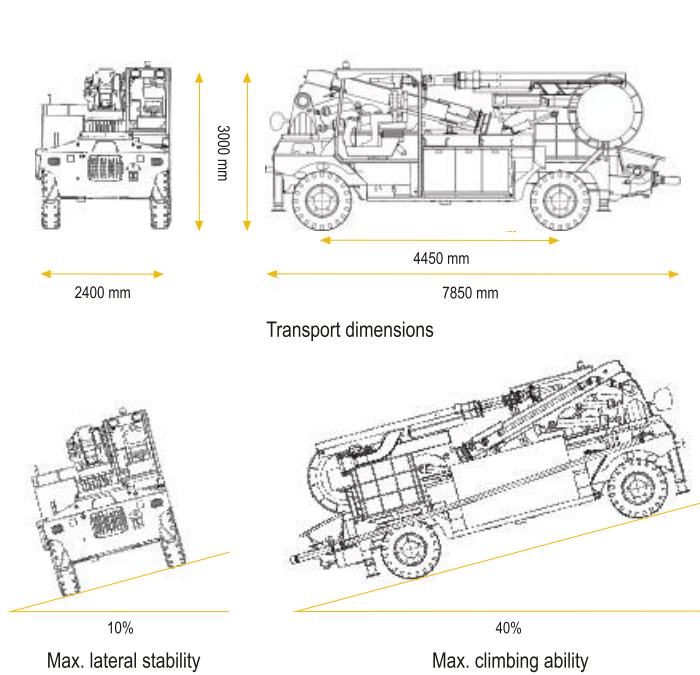


Automatic spraying arm allows an optimum maneuverability.



Great stability, easy to handle and high concrete spraying performance.





General Data

Dimensions

Length	7850 mm
Height	3000 mm
Width	2400 mm
Weight	15.500 Kg / 16.000 Kg (PC Version)

Carrier driving mechanism

Engine	Diesel Engine - 4 cylinders CATERPILLAR C4.4 - EURO III & EPA Tier-3er-3
Motor output	70 kW / 100,4 HP
Steering	Hydraulically powered 4-wheel steering (4WS). Crab mode
Cooling	Water
Drive 'cab	Hydrostatic with automatic for 4-wheel drive (4WD)
Max. Speed	16 km/h
Braking system	Service brake: hydraulic multi-disk brakes in oil bath for 4 wheels Parking and negative brake: independent hydraulic multi-disk brakes in oil bath for 2 wheels
Turning radius	- Inner: 2600 mm - Outer: 6100 mm
Rotative seat with seatbelt	Bi-directional travel, the operator's seat swivels 180°
Outriggers distances (LxW)	6340 mm x 2950 mm (operation position)
Ground clearance	330 mm
Max. climbing ability	40% (SAE Norm)
Max. lateral stability	10% (SAE Norm)

Concrete pump

Double piston pump

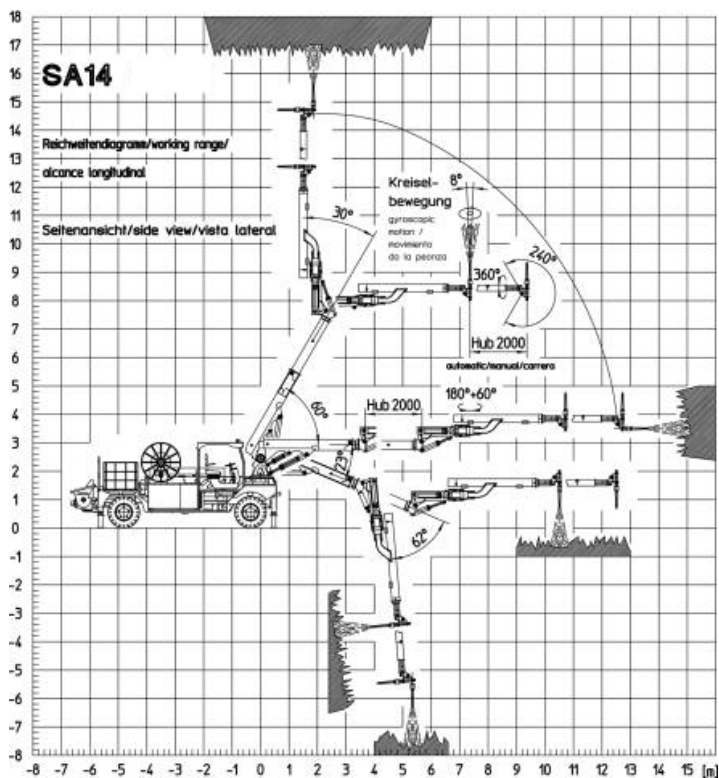
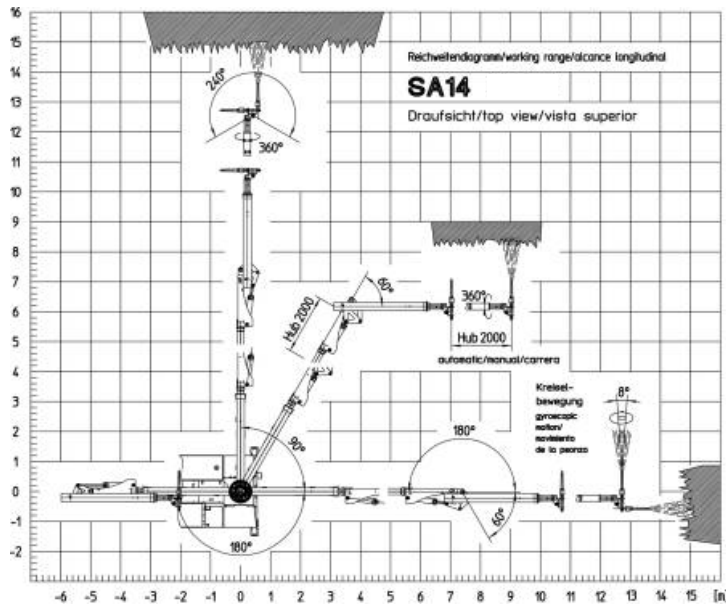
Model	PM BSA 1005
Type	Hydraulic cylinders driving long stroke piston concrete pump and S-tube, hydraulic motor drive agitator in hopper, grill with electric vibrator, emergency stop switch.
Hydraulic cylinders diameter	110 mm / 63 mm / 1000 mm (piston / rod / theoretical stroke)
Concrete output (min. / max.)	0-30 m ³ /h*
Concrete pressure max.	7,8 Mpa
Electric motor power	55 kW
Power supply voltage	400 V / 440 V
Power supply frequency	50 Hz / 60 Hz

*Theoretical pumping capacity



180° rotating cabin.





Operation

Additive pump AL 403.5

Motor output	1,1 kW
Conveying output	30 - 700 l/h
Conveying pressure	7,5 bar
Working pressure/breakage	10,5 bar
Tank capacity	1000 l

High pressure cleaner

Drive	Electric
Engine power	5,5 kW
Conveying output	15 l/min
Conveying pressure max.	200 bar

Cable reel

Voltage	400 V / 50 Hz 440 V / 60 Hz
Cable length	50 m / 100 m (optional)
Rolling on/off	Hydraulic

Compressor PM77

Power supply voltage	400 V / 440 V (optional)
Power supply frequency	50 Hz / 60 Hz
Working pressure (manom.)	7,5 bar
Max. air flow	11 m ³ /min +/-5%
Outlet connection	1 1/2 G
Oil amount in the compressor circuit	50 l
Engine speed	2975 r.p.m / 3570 r.p.m
Engine power (continuous service)	75 kW
Cooling air flow	21750 m ³ /h
Approx. weight	1625 Kg (approx.)
Cooling system	AIR

Optional: Compressor PM55

Telescopic spraying arm SA 14

Max. vertical spraying reach	17
Max. horizontal spraying reach	15
Rotation (left/right)	270°
Main arm extensions	2 (all protected with cover)
Swivel range	270°
Maximal angle of the telescopic arm	+60° / -30°
Reduction pipe	Ø 80 mm
Angle of rotation of the arm	270°
Spraying head rotation	360°
Transversal nozzle rotation	(+120° / -120°)
Nozzle brush movement	8° / 60 rpm / 360°
Axis movements	9
Spraying head inclination	+120° / -120°

Optional accessories

- Wireless remote control
- 100 m cable
- Automatic greasing device (concrete pump)
- Spare wheel
- High altitude performance configuration
- Diesel particle filter
- Flexible hoses delivery line in Sa14 boom



Putzmeister Sika
EXPERTS IN SPRAYED CONCRETE

Tel: (+34) 914 288 100
marketing@putzmeister.es - www.putzmeister.es/shotcrete

Putzmeister