

# All-rounder

Wacker Neuson All-Wheel Dumpers  
3001 • 4001 • 5001 • 6001



**Powerful, compact and  
excellent off-road capability.  
Payloads from 3 to 6 t.**

The all-wheel dumpers from Wacker Neuson are all-rounders. Specialised for maximum transport performance, whatever the tonnage.

Wacker Neuson dumpers are on top of the pile. They are efficient, robust in deployment, low on maintenance and reliable. They are specially suited to rapid, targeted material transport even on difficult and steep terrain.

These all-rounders in the range of 3 to 6 tonnes are ideally graded and enormously versatile. They are jacks-of-all-trades and veritable powerhouses. The 3001 and 6001 models are even available with a comfortable safety cab. Exclusively from Wacker Neuson.



**WACKER  
NEUSON**



**Easy to operate**  
**Economical to run.**

Wacker Neuson dumpers are specialist material transporters.

**Wacker Neuson factors:**

- Low-maintenance hydrostatic all-wheel drive.
- Supreme off-road capability thanks to a centre-pivot angle of up to 37°/15°.
- Extreme gradeability of up to 50 %.
- High ground clearance.
- Speeds of up to 25 kph for rapid transport tasks.
- Generous servicing and maintenance access via pivoting one-piece engine hatch.
- Articulated frame steering with integrated hose guide for optimal protection.
- Tidy cockpit with spacious, sturdy leg protection.
- Folding ROPS roll-bar as standard.
- Easy mounting and alighting from either side.
- High-strength steel construction – robust and resistant.
- High-volume, robust and hard-wearing skip design.
- Up to 3,200l skip capacity.
- Available ex-works with cab\*.

\*Option



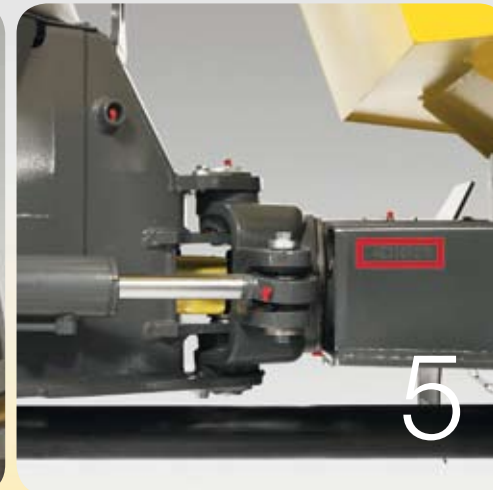






# Payload 3,000 kg: The Wacker Neuson All-wheel dumper 3001.

**1,850 l\***  
SKIP CONTENT  
\*heaped



## Wacker Neuson factors:

- Low-maintenance hydrostatic all-wheel drive.
- 3 skip types: Front-tipping (standard), swivel-tipping\*, skip with low tipping height\* (2,200 mm).
- Generous servicing and maintenance access through pivoting one-piece engine hatch.
- High ground clearance.
- Speeds of up to 25 kph for rapid transport tasks.
- Maximum payload of 3,000 kg.
- Available ex-works with cab\*.

\*Option

## The complete package.

With three skip types (incl. low tipping height), travel speeds of up to 25 kph, high ground clearance and excellent off-road capability, it is the top model in its class.

Simply complete and completely simple. From the way it drives through the way it handles to safety, maintenance and efficiency. Quality through and through. The new safety cab\* turns it into a dumper for every season. All fitted ex-works as only Wacker Neuson knows how. Exclusively.

**In the hydrostatic all-wheel drive** the traction motor is supplied with oil directly from the drive pump. Drive commands (such as "slower" or "faster") are directly transmitted to the machine with no transmission losses. A drive shaft transmits the drive directly to the axles. When the drive pedal is released, the brakes are automatically applied.

**1 The collapsible ROPS roll-bar** not only guarantees driver safety but also enables passages with low headroom to be negotiated with ease.

**2 High ground clearance in association** with the hydrostatic all-wheel drive and centre-pivot steering makes for excellent off-road capability.

**3 Generous maintenance and servicing access.** The one-piece engine hatch can be opened wide and offers unrestricted access to the engine space.

**4 The tidy, robust cockpit** extends over the full breadth of the chassis. It protects the driver from falling material.

**5 Centre-pivot steering.** The split chassis and centre-pivot steering angle of 37° / 15° guarantee permanent ground contact and optimal traction even on difficult terrain.

**6 A full-fledged safety cab\*** that really merits the name. ROPS / FOPS Level II-certified, heatable, stable, and roomy. Only from Wacker Neuson.

**7 Integrated hose guide.** The hoses are run through the articulated joint and thus protected from damage.

**8 Swivel-tipping skip with low tipping height.** Dumpers are used more and more for material transport in buildings, basement garages and environments that have limited clearance. A swivel-tipping skip with "low tipping height" (option) can also be fully deployed for tipping in tight and low spaces.

\* Option





# Payload 4,000 kg: The Wacker Neuson All-Wheel Dumper 4001.

**2,250 l\***  
SKIP CONTENT  
\*heaped,  
standard skip

## More of a speedster: the 4001s Speed Version\*.

- 25 kph.
- Maximum payload 3,500 kg.
- Swivel-tipping skip 1,900 l skip capacity (standard).
- Light materials skip 2,250 l skip capacity\*.

\* Option



The collapsible ROPS roll-bar not only guarantees driver safety but also enables passages with low headroom to be negotiated with ease.

In the hydrostatic all-wheel drive the traction motor is supplied with oil directly from the drive pump. Drive commands (such as "slower" or "faster") are directly transmitted to the machine with no transmission losses. A drive shaft transmits the drive directly to the axles. When the drive pedal is released, the brakes are automatically applied.

### The All-Wheel Pro.

Shifting up to 4,000 kg payload quickly and efficiently and tipping out the material with spot-on precision using the swivel-tipping skip that is fitted as standard. Guaranteed to get things going on the building site.

The 4001s is styled for an even faster work rate for a slightly smaller payload.

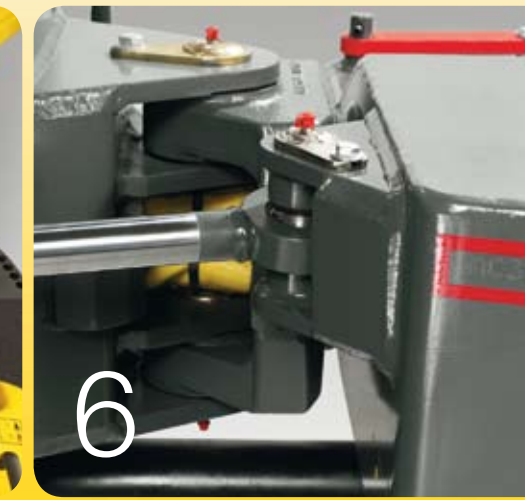
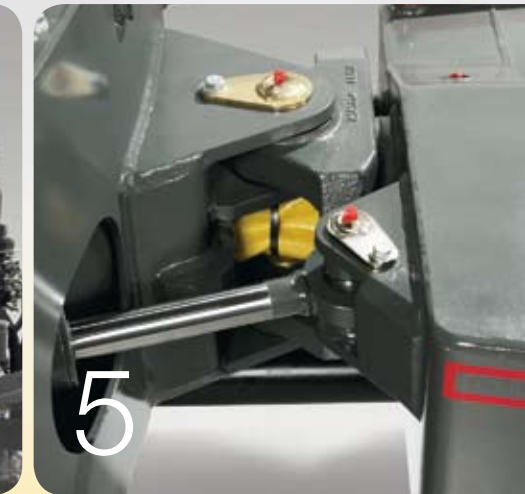
What both have in common is their state-of-the-art technology: from the hydrostatic all-wheel drive through the all-terrain running gear to the time- saving maintenance.

### Wacker Neuson factors:

- Low-maintenance hydrostatic all-wheel drive.
- Swivel-tipping skip (standard).
- High ground clearance.
- High-volume, robust and hard-wearing skip design.
- Speeds of up to 21 kph for rapid transport tasks.
- Up to 2,250 l skip capacity (heaped) (standard skip).
- Maximum payload of 4,000 kg.

**1 Swivel-tipping skip** enables continuously variable tipping through a full 180°. Ideal in tight spaces for spot-on unloading of bulk material.

**Light materials skip** was specially introduced as an option for the Wacker Neuson 4001-Speed wheel dumper. The volume of this skip is approximately 18% greater than the standard skip, allowing it to carry so much more lightweight material.



- 2 High ground clearance** which, in association with the hydrostatic all-wheel drive and centre-pivot steering, makes for excellent off-road capability.
- 3 Generous maintenance and servicing access.** The one-piece engine hatch can be opened wide and offers unrestricted access to the engine space.
- 4 The tidy, robust cockpit** extends over the full breadth of the chassis. It protects the driver from falling material.
- 5 Integrated hose guide.** The hoses are run through the articulated joint and thus protected from damage.
- 6 Centre-pivot steering.** The split chassis and centre-pivot steering angle of 37°/15° guarantee permanent ground contact and optimal traction even on difficult terrain.





# Payload 5,000 kg: The Wacker Neuson All-Wheel Dumper 5001.

**2,700l\***  
SKIP CONTENT  
\*heaped,  
standard skip

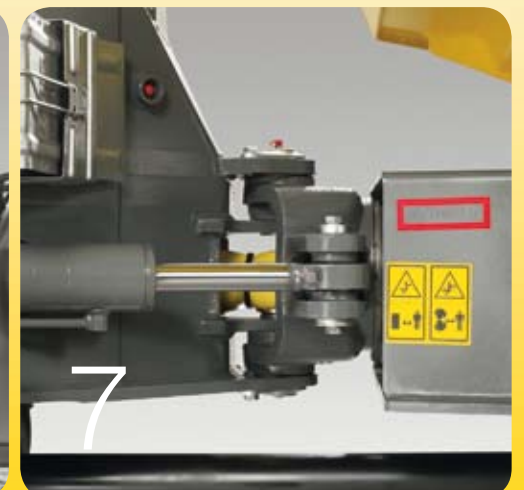
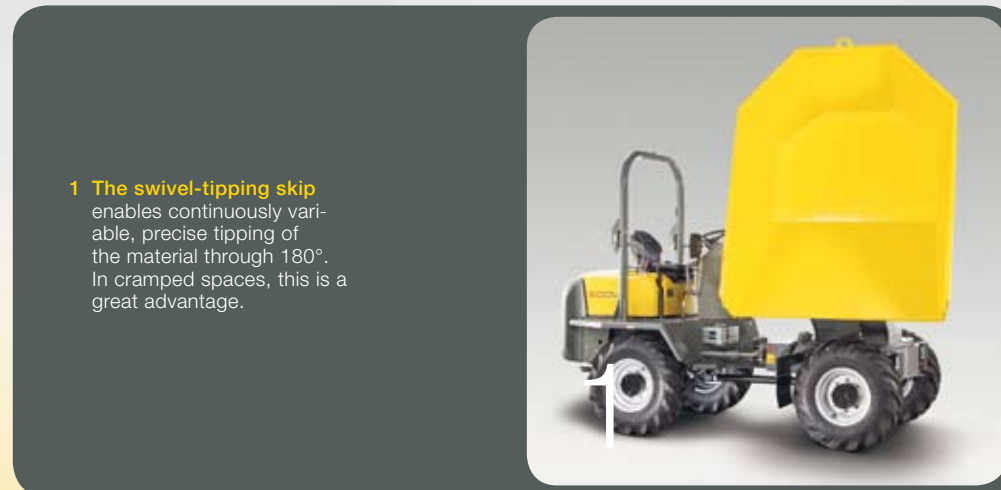


- 2 The collapsible ROPS roll-bar not only guarantees driver safety, but also enables passages with low headroom to be negotiated with ease.
- 3 The tidy, robust cockpit extends over the full breadth of the chassis. It protects the driver from falling material.
- 4 High ground clearance which, in association with the hydrostatic all-wheel drive and centre-pivot steering, makes for excellent off-road capability.

- 5 Integrated hose guide. The hoses are run through the articulated joint and thus protected from damage.
- 6 Generous maintenance and servicing access. The one-piece engine hatch can be opened wide and offers unrestricted access to the engine space.
- 7 Centre-pivot steering. The split chassis and centre-pivot steering angle of 37°/15° guarantee permanent ground contact and optimal traction even on difficult terrain.

## Wacker Neuson factors:

- Low-maintenance hydrostatic all-wheel drive.
- Swivel-tipping skip.
- Generous servicing and maintenance access (through pivoting one-piece engine hatch).
- Articulated frame steering with integrated hose guide for optimal protection.
- Speeds of up to 25 kph for rapid transport tasks.
- Up to 2,700l skip capacity (heaped).
- Maximum payload of 5,000 kg.



### The role model.

5,000 kg of payload, swivel-tipping skip as standard and a maximum drive speed of 25 kph make it the role model in its class.

It is always ready to flex its powerful frame in the field, and offers exceptional mobility. The split chassis with centre-pivot steering breaks new ground even on the most testing of terrain, carving a path to maximum productivity however heavily laden it may be.

**In the hydrostatic all-wheel drive** the traction motor is supplied with oil directly from the drive pump. Drive commands (such as "slower" or "faster") are directly transmitted to the machine with no transmission losses. A drive shaft transmits the drive directly to the axles. When the drive pedal is released, the brakes are automatically applied.

\* Option





# Payload 6,000 kg: The Wacker Neuson All-Wheel Dumper 6001.

**3,200 l\***  
SKIP CONTENT  
\*heaped



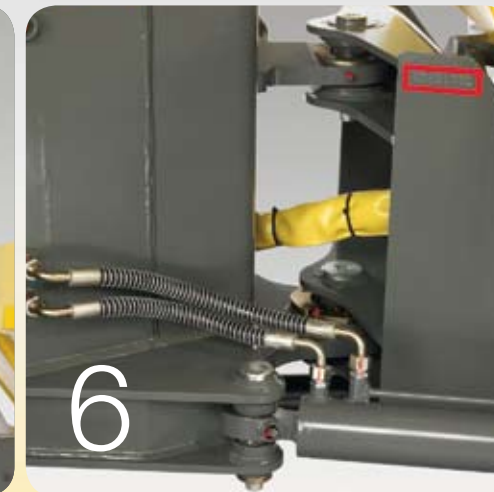
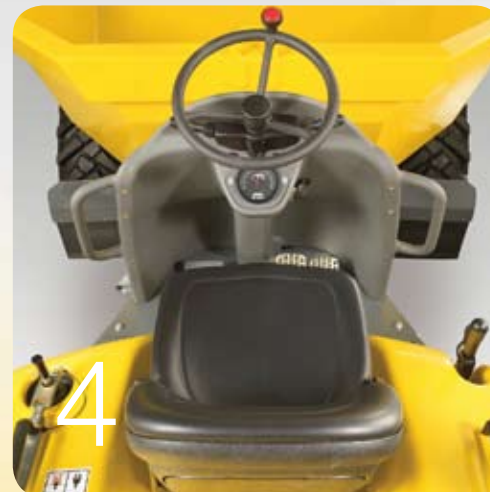
- 1 The collapsible ROPS roll-bar not only guarantees driver safety, but also enables passages with low headroom to be negotiated.
- 2 High ground clearance in association with the hydrostatic all-wheel drive and centre-pivot steering makes for excellent off-road capability.



- 3 Generous maintenance and servicing access: The one-piece engine hatch can be opened wide and offers unrestricted access to the engine space.
- 4 The tidy, robust cockpit extends over the full breadth of the chassis. It protects the driver from falling material.



- 5 A full-fledged safety cab\* that really merits the name. ROPS / FOPS Level II-certified, heatable, stable, and roomy. Only from Wacker Neuson.
- 6 Integrated hose guide. The hoses are run through the articulated joint and thus protected from damage.



- 7 The front-tipping skip (as standard) is designed for particularly rapid material turnover. It has the lowest centre of gravity and the greatest capacity (3,200 l).
- 8 The swivel-tipping skip (option) enables precise tipping of material through a continuously variable 180°. In tight spaces, this is a great advantage.



## The power package.

The top model of the all-rounder class has everything that a workhorse of the future needs: hydrostatic all-wheel drive, 2 skip types, 6,000 kg payload and the most powerful engine in its class (on the 6001s Power\* model). And the new safety cab\* makes it into a dumper for all seasons. All fitted ex-works as only Wacker Neuson knows how. Exclusively.

**In the hydrostatic all-wheel drive** the traction motor is supplied with oil directly from the drive pump. Drive commands (such as "slower" or "faster") are directly transmitted to the machine with no transmission losses. A drive shaft transmits the drive directly to the axles. When the drive pedal is released, the brakes are automatically applied.

\* Option

## More of a powerhouse: 6001s Powerversion\*

- Engine output 84 kW (strongest engine in its class).
- Torque 422 Nm.
- Redesigned cockpit.
- Compared to the 6001s the cockpit is slightly further forward.

\* Option

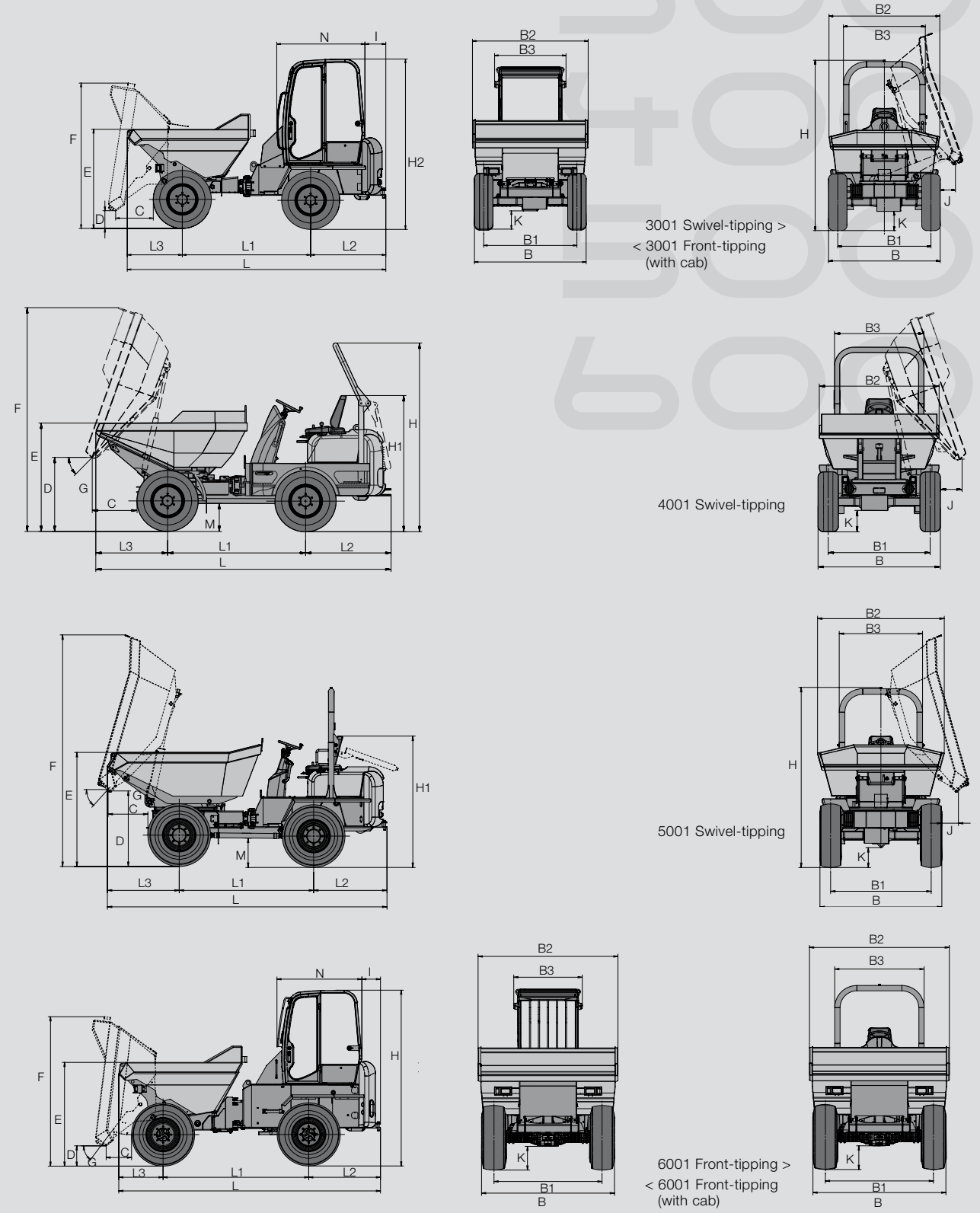
## Wacker Neuson factors:

- Low-maintenance hydrostatic all-wheel drive.
- 2 skip types: Front-tipping (standard), swivel-tipping skip\*.
- Supreme off-road capability thanks to a centre-pivot angle of up to 33°/13°.
- Available ex-works with cab.
- Speeds of up to 25 kph for rapid transport tasks.
- Up to 3,200 l skip capacity (heaped) (standard).
- Maximum payload of 6,000 kg.

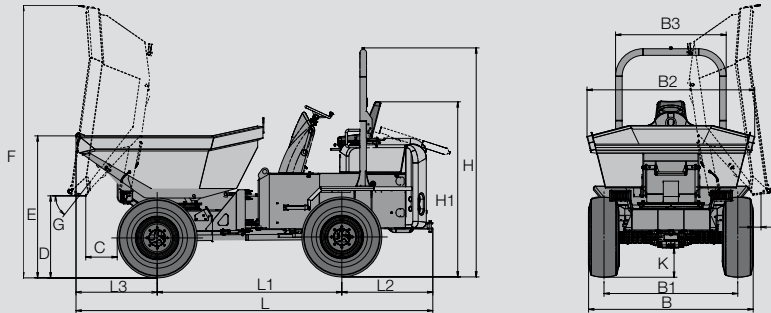




**Technical Data:**  
 A whole load  
 More Performance.







6001s Front-tipping

DIMENSIONS	3001 (Front-Tipping)	3001 (Swivel-tipping)	4001 (Swivel-tipping)	4001 (Speed)	5001
B	1,785 mm	1,785 mm	1,795 mm	1,795 mm	1,920 mm
B1	1,490 mm	1,490 mm	1,480 mm	1,480 mm	1,580 mm
B2	1,860 mm	1,775 mm	1,740 mm	1,740 mm	1,990 mm
B3	1,310 (1,140**) mm	1,310 (1,140**) mm	1,300 mm	1,300 mm	1,310 mm
C	577 mm	600 mm	600 mm	600 mm	625 mm
D	260 mm	1,020 mm	1,030 mm	1,030 mm	1,160 mm
E	1,475 mm	1,475 mm	1,500 mm	1,500 mm	1,790 mm
F	2,220 mm	3,125 (2,200**) mm	3,200 mm	3,200 mm	3,630 mm
G	46 °	46 °	46 °	46 °	48 °
H *	2,670 mm	2,670 mm	2,700 mm	2,700 mm	2,830 mm
H1*	1,870 mm	1,870 mm	1,930 mm	1,930 mm	2,030 mm
H2**	2,610 mm	2,610 mm	-	-	-
I**	320 mm	320 mm	-	-	-
J	-	245 mm	270 mm	270 mm	250 mm
K	280 mm	280 mm	300 mm	300 mm	290 mm
L	3,980 mm	4,140 mm	4,200 mm	4,200 mm	4,390 mm
L1	1,960 mm	1,960 mm	1,960 mm	1,960 mm	2,110 mm
L2	1,160 mm	1,160 mm	1,215 mm	1,215 mm	1,150 mm
L3	860 mm	1,020 mm	1,025 mm	1,025 mm	1,130 mm
N**	1,350 mm	1,350 mm	-	-	-

\* with ROPS roll-bar

\*\* with cab

\*\*\* skip with low tipping height



3001  
4001  
5001  
6001

	6001 (Front-tipping)	6001s (Swivel-tipping)
B	2,215 mm	2,215 mm
B1	1,800 mm	1,800 mm
B2	2,330 mm	2,250 mm
B3	1,490 (1140**) mm	1,490 (1140**) mm
C	433 mm	420 mm
D	346 mm	1,070 mm
E	1,771 mm	1,900 mm
F	2,550 mm	3,660 mm
G	53°	52°
H*	3,080 mm	3,080 mm
H1*	2,300 mm	2,300 mm
H2*	2,995 mm	2,995 mm
I**	320 mm	320 mm
J	-	100 mm
K	380 mm	380 mm
L	4,470 mm	4,810 mm
L1	2,485 mm	2,485 mm
L2	1,225 mm	1,225 mm
L3	760 mm	1,100 mm
N**	1,450 mm	1,450 mm

OPERATING-DATA	3001 (Front-tipping)	3001 (Swivel-tipping)	4001 (Swivel-tipping)	4001 (Speed)	5001	6001 (Front tipping)	6001 (Cab)	6001s (Swivel-tipping)	6001s (Cab)
<b>Payload</b>	3,000 kg	3,000 (2600***) kg	4,000 kg	3,500 kg	5,000 kg	6,000 kg	6,000 kg	6,000 kg	6,000 kg
<b>Tare weight</b>	2,410 kg	2,550 kg	2,730 kg	2,640 kg	3,220 kg	4,320 kg	4,520 kg	4,240 (4,450*) kg	4,440 kg
<b>Skip capacity levelled</b>	1,500 l	1,300 l	1,650 l	1,400 l	2,000 l	2,400 l	2,400 l	2,400 l	2,400 l
<b>Skip capacity heaped</b>	1,850 l	1,750 l	2,230 l	1,900 l	2,700 l	3,200 l	3,200 l	3,200 l	3,200 l
<b>Skip capacity water level</b>	1,160 l	900 l	1,150 l	1,130 l	1,400 l	1,880 l	1,880 l	1,880 l	1,880 l
<b>ENGINE</b>									
<b>Make/Type</b>	YANMAR 3TNV88	YANMAR 3TNV88	YANMAR 4TNV88	YANMAR 4TNV88	DEUTZ D2011	Deutz TD2011	Deutz TD2011	Deutz TD2011 (Deutz TCD2012*)	Deutz TD2011
<b>Model</b>	watercooled 3-cylinder Diesel engine	watercooled 3-cylinder Diesel engine	watercooled 4-cylinder Diesel engine	watercooled 4-cylinder Diesel engine	watercooled 4-cylinder Diesel engine	watercooled 4-cylinder Diesel engine	watercooled 4-cylinder Diesel engine	watercooled 4-cylinder Diesel engine	watercooled 4-cylinder Diesel engine
<b>Power (Iso 3046/1)</b>	26kW (35 hp)	26 kW (35 hp)	34.1 kW (46,1 hp)	34.1 kW (46,1 hp)	64.6 kW (87.8 hp)	64.6 kW (87.8 hp)	64.6 kW	64.6 kW (87.8 hp) (84 kW (115 hp)*)	64.6 kW (87.8 hp)
<b>Displacement</b>	1,642 cm <sup>3</sup>	1,642 cm <sup>3</sup>	2,189 cm <sup>3</sup>	2,189 cm <sup>3</sup>	3,619 cm <sup>3</sup>	3,619 cm <sup>3</sup>	3,619 cm <sup>3</sup>	3,619 (4,038*) cm <sup>3</sup>	3,619 cm <sup>3</sup>
<b>Operating speed</b>	2,800 min <sup>-1</sup>	2,800 min <sup>-1</sup>	2,800 min <sup>-1</sup>	2,800 min <sup>-1</sup>	2,600 min <sup>-1</sup>	2,600 min <sup>-1</sup>	2,600 min <sup>-1</sup>	2,600 (2,220*) min <sup>-1</sup>	2,600 min <sup>-1</sup>
<b>Exhaust emissions</b>	ac. 97/68/EC, 3A	ac. 97/68/EC, 3A	ac. 97/68/EC, 3A	ac. 97/68/EC, 3A	ac. 97/68/EC, 3A	ac. 97/68/EC, 3A step 3a (EPA Tier 3)	ac. 97/68/EC, 3A step 3a (EPA Tier 3)	ac. 97/68/EC, 3A	ac. 97/68/EC, 3A
<b>DRIVE CHARACTERISTICS</b>									
<b>Drive speed</b>	0-7 kph/0-22kph	0-7kph/0-25kph	0-7kph/0-25kph	0-8kph/0-25kph	0-8kph/0-25kph	0-5kph/0-25kph	0-5kph/0-25kph	0-5kph/0-25kph	0-5kph/0-25kph
<b>Centre-pivot angle</b>	+/-37°	+/- 37°	+/- 37°	+/- 37°	+/- 37°	+/- 33°	+/- 33°	+/- 33°	+/- 33°
<b>Oscillation</b>	+/-15°	+/- 15°	+/- 15°	+/- 15°	+/- 15°	+/- 10,5°	+/- 10,5°	+/- 10,5°	+/- 10,5°
<b>Turning radius outside</b>	3,650 mm	3,650 mm	3,730 mm	3,730 mm	4,425 mm	5,200 mm	5,200 mm	5,200 mm	5,200 mm
<b>Max. grade-ability</b>	50 %	50 %	50 %	50 %	50 %	50 %	50 %	50 %	50 %
<b>DRIVE</b>									
<b>Drive</b>	hydrostatic automotive, drive via PTO gear to axles, electric drive direction selection								
<b>Steering</b>	hydrostatic articulated frame steering								
<b>Tyres</b>	11.50/80-15.3 Tractor profile	11.50/80-15.3 Tractor profile	11.50/80-15.3 Tractor profile	11.50/80-15.3 Tractor profile	12.5/80-18 Tractor profile	405/70-20; 14 Ply Tractor profile	405/70-20; 14 Ply Tractor profile	405/70-20; Tractor profile	405/70-20; Tractor profile
<b>Service brake</b>	via multi-disc brake in oil bath in front axle, hydraulically operated								
<b>Parking brake</b>	via multi-disc brake in oil bath in front axle, hydraulically operated								
<b>HYDRAULICS SYSTEM</b>									
<b>Drive pump</b>	Axial piston pump	Axial piston pump	Axial piston pump	Axial piston pump	Axial piston pump	Axial piston pump	Axial piston pump	Axial piston pump	Axial piston pump
<b>Flow rate</b>	126 l/min	126 l/min	112 l/min	112 l/min	145 l/min	184 l/min	184 l/min	184 (192*) l/min	184 l/min
<b>Operating pressure</b>	360 bar	360 bar	420 bar	420 bar	420 bar	420 bar	420 bar	420 (480*) bar	420 bar
<b>Work pump</b>	Gear pump	Gear pump	Gear pump	Gear pump	Gear pump	Gear pump	Gear pump	Gear pump	Gear pump
<b>Flow rate</b>	45 l/min	45 l/min	45 l/min	45 l/min	42 l/min	57 l/min	57 l/min	57 (52*) l/min	57 l/min
<b>Operating pressure</b>	220 bar	220 bar	175 bar	175 bar	220 bar	220 bar	220 bar	220 bar	220 bar
<b>TANK CAPACITY</b>									
<b>Diesel tank</b>	40 l	40 l	40 l	40 l	40 l	70 l	70 l	70 l	70 l
<b>Hydraulic oil tank</b>	48 l	48 l	48 l	40 l	48 l	70 l	70 l	70 l	70 l
<b>ELECTRICS</b>									
<b>Voltage</b>	12 V	12 V	12 V	12 V	12 V	12 V	12 V	12 V	12 V
<b>Battery</b>	88 Ah	88 Ah	88 Ah	88 Ah	88 Ah	100 Ah	100 Ah	100 Ah	100 Ah
<b>Alternator</b>	40 A	40 A	40 A	40 A	40 A	55 A	55 A	55 (95*) A	55 A
<b>Starter</b>	1.7 kW	1.7 kW	2.0 kW	2.1 kW	2.3 kW	2.3 kW	2.3 kW	2.3 kW	2.3 kW
<b>NOISE LEVELS</b>									
<b>Noise LWA (acc. 2000/14/EC)</b>	101 dB(A)	101 dB(A)	101 dB(A)	101 dB(A)	101 dB(A)	102 dB(A)	102 dB(A)	102 (103*) dB(A)	102 dB(A)

\* Power Version  
\*\*\* skip with low tipping height



**OPTIONS****3001**

- CAB
  - ROPS / FOPS Level II**
- HYDRAULICS
  - Panolin Bio-Oil
  - BP-Biohyd SE46
- PAINT
  - Special paint 1 RAL**  
(for yellow parts only)
  - Special paint 1 no RAL**  
(for yellow parts only)
- MISCELLANEOUS
  - Security 24 (2,000 h)**  
Warranty extension to 24 months or 2,000 operating hours
  - Security 36 (3,000 h)**  
Warranty extension to 36 months or 3,000 operation hours
  - Cover for dashboard**
  - Lighting**
  - Trailer socket**
  - Flashing beacon**
  - Reverse alarm**
  - Spare wheel**
  - Asphalt skip**
  - Swivel skip**
  - Wheel chock**
- PACKS
  - Mirror package**

**OPTIONS****4001**

- HYDRAULICS
  - Panolin Bio-Oil
  - BP-Biohyd SE46
- PAINT
  - Special paint 1 RAL**  
(for yellow parts only)
  - Special paint 1 no RAL**  
(for yellow parts only)
- MISCELLANEOUS
  - 25 kph Version**
  - Security 24 (2,000 h)**  
Warranty extension to 24 months or 2,000 operating hours
  - Security 36 (3,000 h)**  
Warranty extension to 36 months or 3,000 operation hours
  - Cover for dashboard**
  - Lighting**
  - Trailer socket**
  - TÜV road homologation (Germany)**
  - Flashing beacon**
  - Reverse alarm**
  - Spare wheel**
  - Wheel chock**
- PACKS
  - Mirror package**

**OPTIONS****5001**

- HYDRAULICS
  - Panolin Bio-Oil
  - BP-Biohyd SE46
- PAINT
  - Special paint 1 RAL**  
(for yellow parts only)
  - Special paint 1 no RAL**  
(for yellow parts only)
- MISCELLANEOUS
  - Security 24 (2,000 h)**  
Warranty extension to 24 months or 2,000 operating hours
  - Security 36 (3,000 h)**  
Warranty extension to 36 months or 3,000 operation hours
  - Cover for dashboard**
  - Lighting**
  - Trailer socket**
  - TÜV road homologation (Germany)**
  - Flashing beacon**
  - Reverse alarm**
  - Spare wheel**
  - Wheel chock**
- PACKS
  - Mirror package**

**OPTIONS****6001**

- CAB
  - ROPS / FOPS Level II**
- POWER VERSION HYDRAULICS
  - Panolin Bio-Oil
  - BP-Biohyd SE46
- PAINT
  - Special paint 1 RAL**  
(for yellow parts only)
  - Special paint 1 no RAL**  
(for yellow parts only)
- MISCELLANEOUS
  - Security 24 (2,000 h)**  
Warranty extension to 24 months or 2,000 operating hours
  - Security 36 (3,000 h)**  
Warranty extension to 36 months or 3,000 operation hours
  - Cover for dashboard**
  - Lighting**
  - Trailer socket**
  - TÜV road homologation (Germany)**
  - Flashing beacon**
  - Reverse alarm**
  - Spare wheel**
  - Wheel chock**
  - Swivel skip**
- PACKS
  - Mirror package**

## Compact construction machinery from Wacker Neuson offers power and manoeuvrability on-the-spot: Any time, any place.

We consider it a constant duty to ensure that our pledge regarding our products and services is fulfilled:

**Reliability, Trust, Quality, Reactivity, Flexibility and Innovation.**

Compact equipment branded Wacker Neuson also does the business where others can only stand and watch. Our products prove their worth through quality, power, intelligent hydraulics, compact dimensions, innovative technology, high productivity and reliability. A setup such as only Wacker Neuson – as the Compact Equipment specialist – is capable of.

You too can take advantage of this bespoke capability. The Wacker Neuson compact class is in a class of its own. With success stamped right through the line.



**WACKER  
NEUSON**