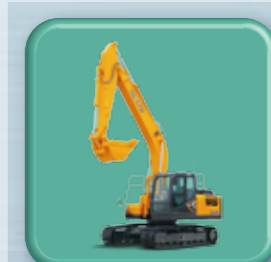
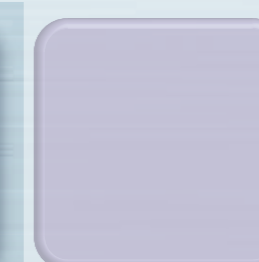
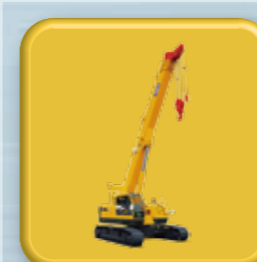
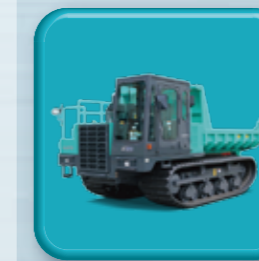
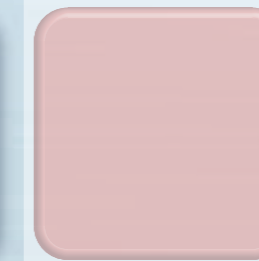
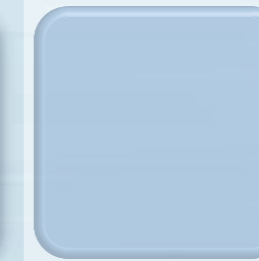
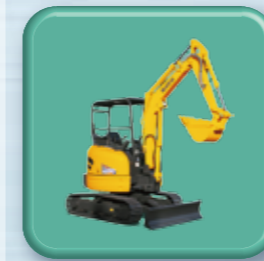
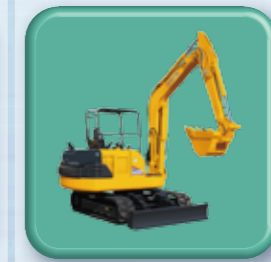


KATO

Progress to the Next Stage

Product Guide

KATO WORKS CO.,LTD.



NOTE : Illustrations may include optional equipment. KATO products and specifications are subject to improvements and changes without notice.

<http://www.kato-works.co.jp>

● Contact for enquiry:

KATO
QUALITY & EXPERIENCE
SINCE 1895

KATO WORKS CO.,LTD.

9-37, Higashi-ohi 1-chome, Shinagawa-ku, Tokyo 140-0011, Japan.
Tel. : Head Office Tokyo(03)3458-1111
Overseas Marketing Department Tokyo(03)3458-1115
Fax. : Tokyo(03)3458-1163

Crane

- Overall Length, Overall Width, Overall Height (Traveling Position)
- GVW
- Maximum Rated Lifting Capacity
- Boom Section / Length
- Super Luffing Jib Section / Length / Offset Angle
- Power Jib Section / Length / Offset Angle
- Manual Jib Section / Length / Offset Angle
- Heavy Lift Jib Section / Length / Offset Angle
- Outriggers Extension Width / Fully Extended
- Maximum Traveling Speed
- ACS (Automatic Crane System)
- Searcher Hook / Length

Crawler Crane

- Rated Output
- Maximum Rated Lifting Capacity
- Boom Section / Length
- Jib Section / Length

Excavator

- Rated Output
- Operating Weight
- Bucket Capacity
- Maximum Digging Depth
- APC (Automatic Power Control)

Lineup

- Long Crawler Specification
- Dozer Specification

Crawler Carrier

- Rated Output
- Operating Weight
- Maximum Payload

Vacuum Truck

- GVW
- Hopper Capacity
- Air Volume (Only Blower)

Street Sweeper

- Rated Output (Superstructure Engine)
- Hopper Capacity
- Maximum Payload
- Maximum Sweep Speed
- Maximum Sweep Width

Snow Sweeper

- Rated Output (Superstructure Engine)
- Maximum Sweep Width
- Maximum Sweep Speed

Earth Boring Rig

- Rated Output
- Operating Weight
- Maximum Digging Depth
- Maximum Digging Diameter

	Rough Terrain Crane	03
	Cityrange Crane	04
	All Terrain Crane	05
	Truck Crane	06
	Crawler Crane	07
	Excavator	09
	Mini Excavator	13
	Crawler Carrier	15
	Vacuum Truck	16
	Street Sweeper	17
	Snow Sweeper	17
	Earth Drilling Rig	18



Rough Terrain Crane

Rougher

Powerful lifting and tough design
SR Rough Terrain Crane

SR-700L



- L : 12,590mm
W : 2,990mm
H : 3,680mm
- 39,750kg
- 70t×2.5m
(10m Boom)
- 10.0~44.5m
(6 sections)
- 8.3~13.2m
(2 sections)
7~60°
- 7.6m (6 sections)
- 49km/h
- MS-200

SR-500L



- L : 13,030mm
W : 2,980mm
H : 3,595mm
- 33,970kg
(with standard tires)
- 51t×2.5m
(10.7m Boom)
- 10.7~35.0m
(4 sections)
- 8.8m, 15.2m
(2 sections)
5°, 25°, 45°
- 7.0m (4 sections)
- 48km/h
- MS-200

SR-300L



- L : 11,360mm
W : 2,620mm
H : 3,475mm
- 26,990kg
- 30t×3.0m
(9.35m Boom)
- 9.35~30.5m
(4 sections)
- 7.9m, 13.0m
(2 sections)
5°, 25°, 45°
- 6.6m (5 sections)
- 49km/h
- MS-200

4 axles high-spec traveling
Rough Terrain Crane
Stable operation by
high rigidity structure

SL-700R

PREMIUM



- L : 12,900mm
W : 2,990mm
H : 3,740mm
- 41,145kg
- 70t×2.5m
(10m Boom)
- 10.0~44.5m
(6 sections)
- 8.3~17.5m
(3 sections)
7~60°
- 7.6m (6 sections)
- 49km/h
- MS-210

Easy Jib mounting by
newly developed EJIB system
Efficient Jib operation
is available

SR-250R

PREMIUM

EJIB



- L : 11,565mm
W : 2,620mm
H : 3,475mm
- 26,495kg
- 25t×3.5m
(9.35m Boom)
- 9.35~30.5m
(4 sections)
- 8.7, 13.1m
(2 sections)
5~60°
- 6.6m (5 sections)
- 49km/h
- MS-200



Cityrange Crane

Compact and versatile
High performance CITYRANGE Crane

CITYRANGE

CR-200rf

PREMIUM



- L : 8,710mm
W : 2,290mm
H : 3,245mm
- 19,755kg
- 20t×2.5m
(6.5m Boom)
- 6.5~28.0m
(6 sections)
- 4.0m, 5.8m
(2 sections)
7~60°
- 5.4m (5 sections)
- 55km/h
- MS-250
- 1.0m
2 positions
(high/low)

CR-130rf

PREMIUM



- L : 7,465mm
W : 1,995mm
H : 2,870mm
- 13,815kg
- 13t×1.7m
(5.3m Boom)
- 5.3~24.0m
(6 sections)
- 3.6m, 5.5m
(2 sections)
5~60°
- 4.75m (5 sections)
- 55km/h
- MS-250A
- 0.8m
2 positions
(high/low)



All Terrain Crane

ALLTERR

Advanced All Terrain Crane
Various operations with latest KATO technologies

KA-3000RX



Work site driving position

- L : 17,740mm
W : 2,990mm
H : 4,100mm
(Work site driving position)
- 43,900kg
(Only carrier)
- MAX 300t×2.5m
(14.4m Boom)
(Heavy load hoisting device)
- 14.4~55m
(5 sections)
- SL 10.85~35m
(4 sections)
0°~60°
- HL 13~54m
(6 sections)
10°~60°
- 9.4m (5 sections)
- 75km/h
(Only carrier)
- ACS MS-270

KA-1300RX



Work site driving position

- L : 14,565mm
W : 2,990mm
H : 4,000mm
(Work site driving position)
- 36,620kg
(Only carrier)
- 130t×2.5m
(11.8m Boom)
(Heavy load hoisting device)
- 11.8~52.0m
(6 sections)
- 9.2~26.6m
(4 sections)
2°(5°)~60°
- 8.4m (6 sections)
- 75km/h
(Only carrier)
- ACS MS-220

KA-2200RX



Work site driving position

- L : 17,740mm
W : 2,990mm
H : 4,100mm
(Work site driving position)
- 43,900kg
(Only carrier)
- MAX 220t×3.0m
(14.4m Boom)
(Heavy load hoisting device)
- 14.4~55m
(5 sections)
- SL 11.8~30m
(3 sections)
0°~60°
- HL 13~54m
(6 sections)
10°~60°
- 9.4m (5 sections)
- 75km/h
(Only carrier)
- ACS MS-270



Truck Crane

Manufactured by KATO WORKS (THAILAND) CO.,LTD.

Fine traveling, excellent lifting,
tough structure
KATO New generation Truck Crane

NK-600RX



- L : 13,370mm
W : 2,800mm
H : 3,750mm
- 41,200kg
- MAX 60t×2.7m
(11m Boom)
- 11.0~43.0m
(5 sections)
- 9.2m, 15.0m
(2 sections)
5°, 25°, 45°
- 7.0m (3 sections)
- 75km/h
- ACS MS-200



Crawler Crane

Tough, reliable performance
High lifting capacity

CCH3000

- 280kW/2,100min⁻¹
- 300t×5.0m
- 18.0~90.0m
(Fly Jib) 13.0~37.0m
(Luffing Jib) 25.0~67.0m



CCH1000-6

- 179kW/2,000min⁻¹
- 100t×4.0m
- 13.0~61.0m
10.0~22.0m



CCH700

- 149kW/2,100min⁻¹
- 70t×3.8m
- 12.0~54.0m
9.0~18.0m



CCH2500-6

- 242kW/2,000min⁻¹
- 250t×5.2m
- (STD) 18.0~72.0m
(Light) 72.0~93.0m
13.0~37.0m



CCH550-3II

- 149kW/2,100min⁻¹
- 55t×3.0m
- 9.0~51.0m
6.0~15.0m



CCH550T

- 175kW/2,100min⁻¹
- 55t×3.0m
- 11.3~34.4m



CCH1400-6

- 242kW/2,000min⁻¹
- 140t×4.5m
- (STD) 15.0~63.0m
(Light) 63.0~81.0m
13.0~31.0m

CCH550T-3

- 179kW/2,000min⁻¹
(Tier3)
- 55t×3.0m
- 11.3~34.4m





Excavator

High-performance and high-power
Environmentally-friendly excavator

Environmentally-friendly model
Global standard working performance

HD2045III REGZM



- 235kW/2,000min⁻¹
- 46,200kg
- 1.4-2.3m³
- 7,760mm
- APC150

HD1430-7 REGZM



- 182kW/1,950min⁻¹
- 32,000kg
LC: 32,800kg
- 1.1-1.8m³
- 7,450mm
- APC7

Lineup

HD820-7 REGZM



- 120.5kW/2,000min⁻¹
- 21,000kg
LC: 21,500kg
- 0.45-1.1m³
- 6,700mm
LC: 6,690kg
- APC7

Lineup

HD512-7 REGZM



- 76.4kW/2,000min⁻¹
- 12,900kg
LC: 13,400kg
Dozer: 13,800kg
- 0.25-0.6m³
- 5,590mm
- APC7

Lineup

HD823MR-7 REGZM

MINI RADIUS



- 120.5kW/2,000min⁻¹
- 23,000kg
LC: 23,700kg
- 0.45-1.1m³
- 6,690mm
- APC7

Lineup

HD514MR-7 REGZM

MINI RADIUS



- 76.4kW/2,000min⁻¹
- 14,100kg
LC: 14,500kg
Dozer: 15,100kg
- 0.25-0.6m³
- 5,540mm
- APC7

Lineup

HD308US-6A REGZM

ULTRA SHORT TAIL SWING



- 40kW/2,000min⁻¹
- 7,300kg
Dozer: 7,800kg
- 0.12-0.34m³
- 4,120mm
- APC300

Lineup



Excavator

High-performance and high-power
Environmentally-friendly excavator

Manufactured by KATO WORKS CHINA LTD.

Environmentally-friendly model
Global standard working performance

Manufactured by KATO WORKS CHINA LTD.



HD1638-R5 REGZM



- 183kW/2,150min⁻¹
- 36,000kg
- 1.6-1.8m³
- 7,380mm
- APC300

HD820-R5 REGZM



- 113kW/2,000min⁻¹
- 20,450kg
- 0.8-0.9m³
- 6,700mm
- APC300

HD1430-R5 REGZM



- 183kW/2,150min⁻¹
- 31,600kg
- 1.4-1.6m³
- 7,440mm
- APC300

HD512-R5 REGZM



- 68kW/2,000min⁻¹
- 12,600kg
- 0.4-0.6m³
- 5,630mm
- APC300

HD1023-R5 REGZM



- 122kW/2,200min⁻¹
- 23,700kg
- 1.0-1.1m³
- 7,010mm
- APC300

HD308US-R5 REGZM



- 42.6kW/2,100min⁻¹
- 8,300kg
- 0.3m³
- 4,120mm



Mini Excavator

High quality, great performance
Environmentally-friendly mini-midi excavator

HD85V4



- 42.7kW/2,100min⁻¹
- 8,100kg
- 0.11-0.28m³
- 4,020mm

HD60V4



- 32.4kW/2,400min⁻¹
- 5,370kg
- 0.08-0.18m³
- 3,800mm

HD55V4



- 32.4kW/2,400min⁻¹
- 5,010kg
- 0.08-0.18m³
- 3,590mm

HD45V4



- 32.4kW/2,400min⁻¹
- 4,650kg
- 0.08-0.16m³
- 3,340mm

HD35V4



HD25V4



HD30V4



HD55N4



HD35N4



- 17.5kW/2,200min⁻¹
- 3,450kg
- 0.055-0.12m³
- 3,080mm

- 17.5kW/2,200min⁻¹
- 3,030kg
- 0.04-0.10m³
- 2,700mm

- 17.6kW/2,400min⁻¹
- 2,500kg
- 0.04-0.09m³
- 2,440mm

- 47.6kW/2,400min⁻¹
- 5,350kg
- 0.11-0.19m³
- 3,850mm

- 16.8kW/2,200min⁻¹
- 3,290kg
- 0.055-0.12m³
- 3,080mm



Crawler Carrier

Excellent driving force, comfortable operation



IC120-2



- 224kW/2,200min⁻¹
- 14,100kg
- 11,000kg

IC75-2



- 168kW/2,200min⁻¹
- 10,580kg
- 6,500kg

IC55



- 78.3kW/2,400min⁻¹
- 6,520kg
- 5,000kg



Vacuum Truck

Simple mechanism and easy to maintain
Multi-purpose Vacuum Truck

MultiVac

MV-2200S



- 22t
- 11.3m³
- 50m³/min

MV-600S



- 14.5t
- 6.3m³
- 30m³/min

MV-400S



- 8t
- 2.7m³
- 30m³/min



Street Sweeper

High-performance with compact body
Low noise and efficient Street Sweeper

Street-Master



Earth Drilling Rig

High-performance Earth Drilling Rig
Various digging methods are available

CITY DRILL

HS-800W

- 98kW/2,000min⁻¹
- 6,4m³
- 3~4t
- 30km/h
- Left: 2,5m Right: 2,5m Full: 3,5m



HS-400W



- 40,3kW/2,100min⁻¹
- 3,4m³
- 1,8t
- 20km/h
- Left: 1,8m Right: 1,8m Full: 2,4m



Snow Sweeper

Powerful brush and blow system introduced
Speedy snow removal operation

S-250CVIII



- 235kW/2,100min⁻¹
- 2,5m
- 40km/h

KE-1500III

REGZNM



PE-650



KB-1500RII



- 98kW/2,000min⁻¹
- 23t
- 43m
- 1,5m

- 98kW/2,000min⁻¹
- 19t
- 14,5m
- 1,2m

- 205kW/2,000min⁻¹
- 56,5t
- 45m
- 1,5m