



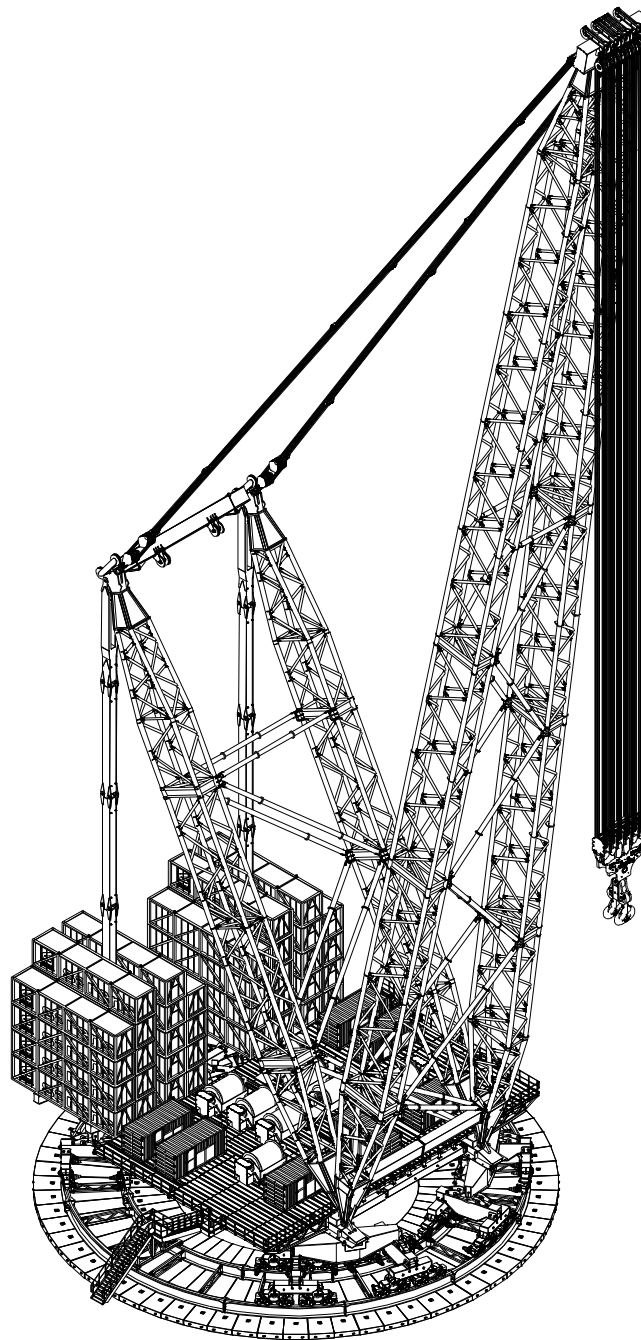
sarens

group

www.sarens.com

Sarens SGC-120

3200 TON



nothing too heavy, nothing too high



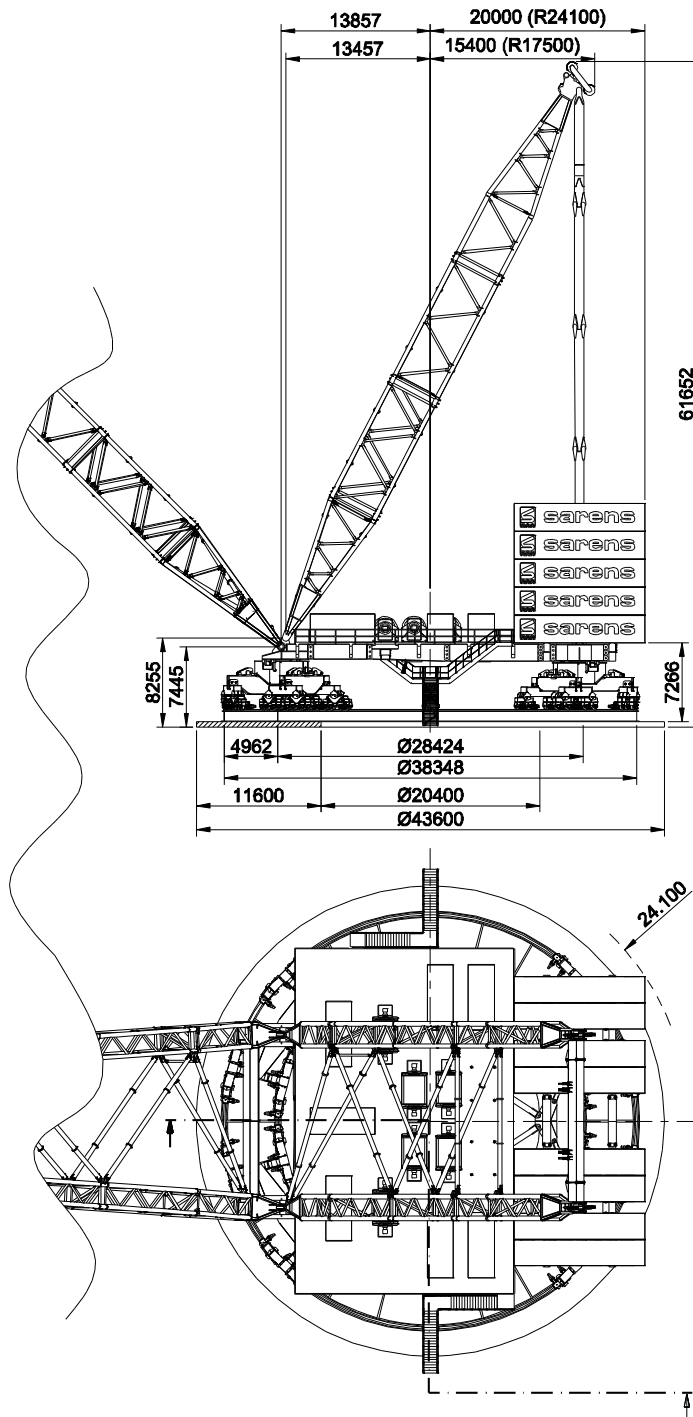


Sarens SGC-120

Dimensions
Dimensions

3200 TON

Abmessungen
Afmetingen





Sarens SGC-120

Configurations
Configurations

3200 TON

Konfigurationen
Configuraties



MB



**LDJ
HDJ**



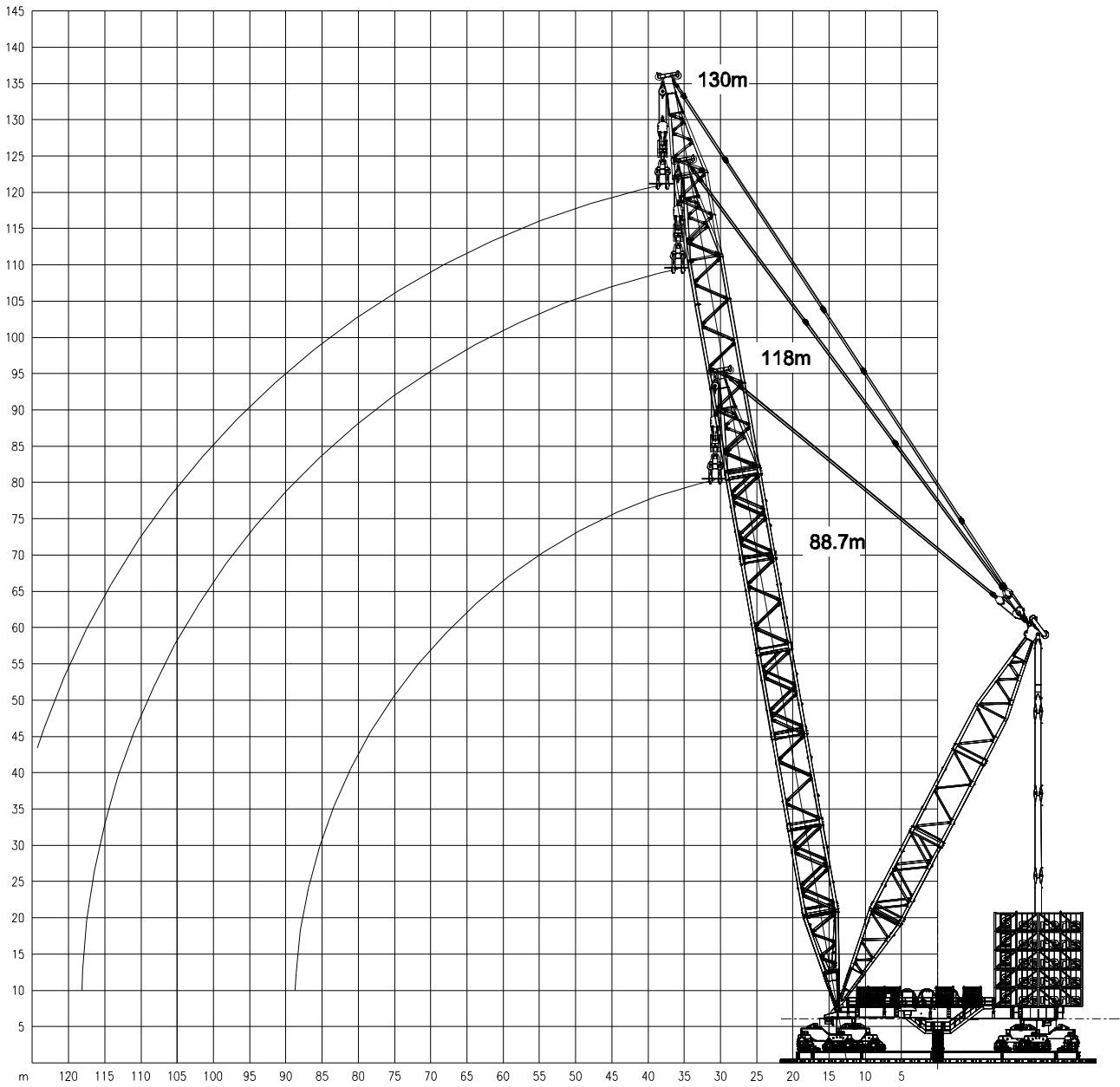
Sarens SGC-120

Working ranges
Portées

3200 TON

Arbeitsbereiche
Werkbereich

MB



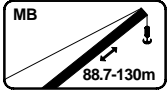


Sarens SGC-120

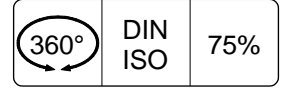
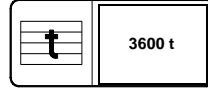
3200 TON



Lifting capacities
Capacités

Tragfähigkeiten
Capaciteiten



MB



	88.7 m		118 m		130 m		
	t	Boom Angle °	t	Boom Angle °	t	Boom Angle °	
31	3150	80.0	(36m)	-	(38m)	-	31
35	3150	77.2	2400	80.0	2200	80.0	35
40	3150	73.8	2400	77.9	2200	79.1	40
45	2777	70.4	2400	75.4	2200	76.8	45
50	2354	66.9	2354	72.9	2139	74.5	50
55	2004	63.3	2004	70.3	1934	72.2	55
60	1730	59.6	1730	67.7	1730	69.9	60
65	1511	55.8	1511	65.0	1511	67.5	65
70	1333	51.7	1333	62.3	1333	65.1	70
75	1186	47.4	1186	59.5	1186	62.6	75
80	1064	42.8	1064	56.6	1064	60.1	80
85	934	37.7	960	53.7	960	57.5	85
90	804	31.8	872	50.5	872	54.8	90
95	672	24.8	796	47.3	796	52.0	95
100	540	14.8	730	43.8	730	49.2	100
105	-	-	672	40.2	672	46.1	105
110	-	-	621	36.2	621	43.0	110
115	-	-	551	31.7	576	39.6	115
120	-	-	480	26.6	536	35.9	120

The weight of hook block is not included in the capacity chart.

Main boom angle is theoretical, based upon non deflected shape of SGC-120 components.

Maximum operating wind speed 22.4 m/s (50 mph)



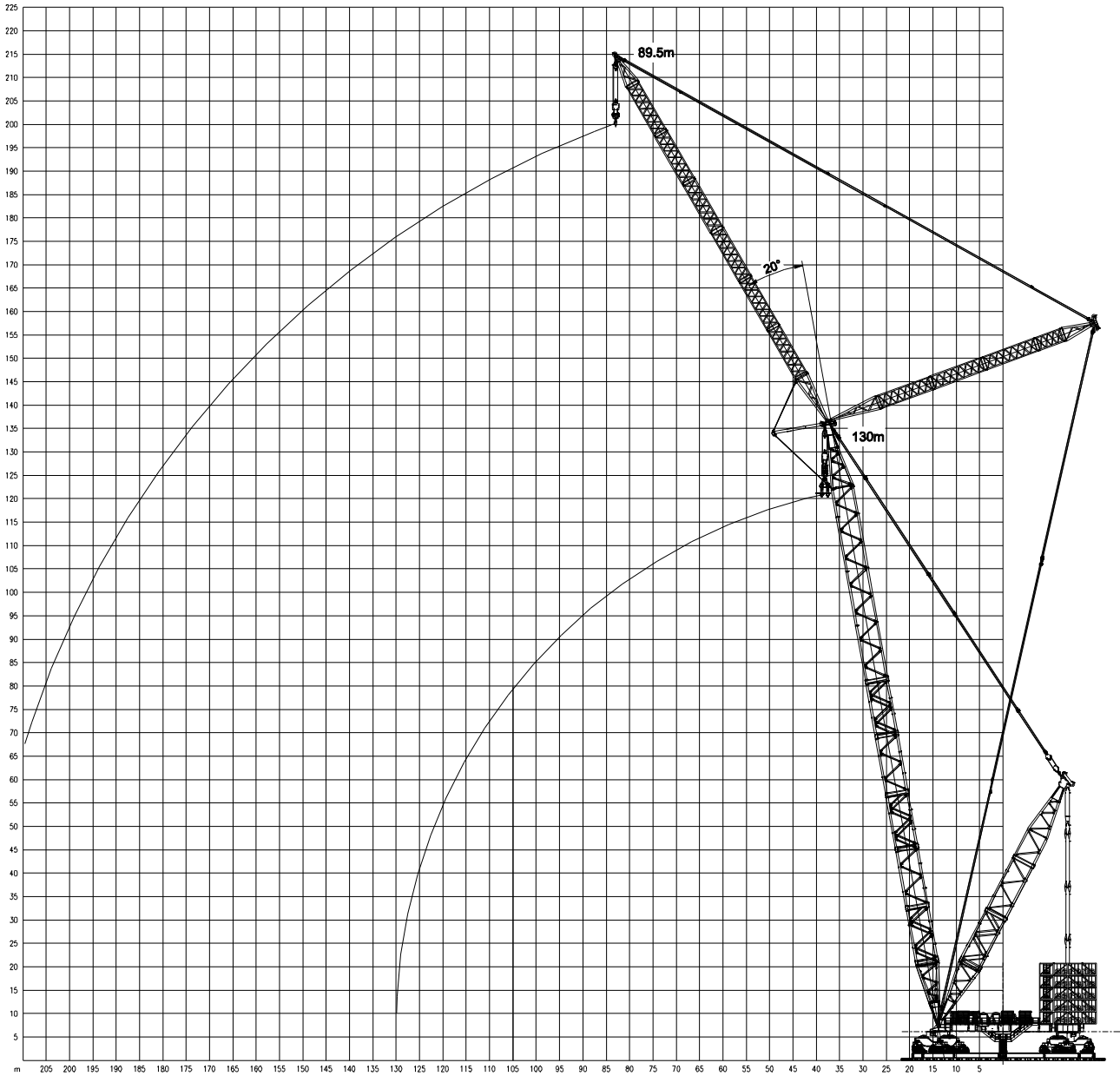
Sarens SGC-120

Working ranges
Portées

3200 TON

Arbeitsbereiche
Werkbereich

LDJ



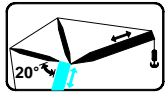


Sarens SGC-120

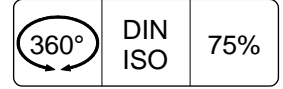
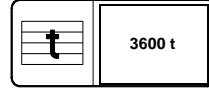
3200 TON

Lifting capacities
Capacités

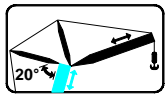
Tragfähigkeiten
Capaciteiten



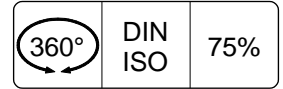
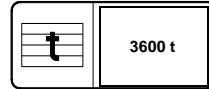
LDJ



	Jib hoist load		Main hoist load	
	LDJ 89.5m		LDJ 89.5m	
	MB 130m		MB 130m	
	t	MB Angle °	t	MB Angle °
20	-	-	(38m)	-
30	-	-	854.0	80.0
40	-	-	854.0	79.1
50	-	-	854.0	74.5
60	-	-	854.0	69.9
70	(83m)	-	854.0	65.1
80	320.0	80.0	800.0	60.1
90	317.5	77.9	625.0	54.8
100	315.0	75.1	470.0	49.2
110	312.5	72.2	330.0	43.0
120	310.0	69.2	190.0	35.9
130	307.5	66.1	-	-
140	305.0	63.0	-	-
150	302.5	59.7	-	-
160	300.0	56.2	-	-
170	255.0	52.5	-	-
180	210.0	48.6	-	-
190	165.0	44.3	-	-
200	120.0	39.6	-	-



HDJ *



	HDJ 40.5m		HDJ 64.1m		HDJ 40.5m		HDJ 64.1m		HDJ 87.7m		HDJ 99.5m	
	MB 118m		MB 118m		MB 130m		MB 130m		MB 130m		MB 130m	
	t	MB Angle °	t	MB Angle °	t	MB Angle °	t	MB Angle °	t	MB Angle °	t	MB Angle °
40	(57m)	-	-	-	(59m)	-	-	-	-	-	-	-
50	1450	79.6	-	-	1300	79.7	-	-	-	-	-	-
60	1420	78.5	-	-	1290	79.3	(72m)	-	-	-	-	-
70	1290	74.7	1150	79.3	1200	75.8	1000	79.3	(84m)	-	-	-
80	1110	70.7	1060	75.9	1055	72.2	950	76.8	780	79.3	-	-
90	925	66.7	935	72.5	895	68.4	870	73.6	755	77.6	600	79.3
100	780	62.4	805	68.9	765	64.6	755	70.3	700	74.8	580	76.6
110	670	58.0	695	65.3	655	60.6	660	67.0	630	71.8	555	73.9
120	575	53.3	595	61.4	555	56.4	580	63.5	560	68.8	525	71.1
130	480	48.2	515	57.4	465	51.9	495	59.8	495	65.7	485	68.2
140	390	42.5	440	53.2	380	47.1	420	56.0	440	62.5	445	65.2
150	-	-	365	48.6	305	41.8	350	51.9	380	59.2	390	62.1
160	-	-	295	43.5	235	35.7	285	47.6	325	55.7	335	58.9
170	-	-	-	-	-	-	225	42.8	270	52.0	285	55.5
180	-	-	-	-	-	-	170	37.3	220	48.0	235	52.0
190	-	-	-	-	-	-	-	-	175	43.6	190	48.1
200	-	-	-	-	-	-	-	-	130	38.7	150	44.0

The weight of hook blocks are not included in the capacity chart.
Main boom angle is theoretical, based upon non deflected shape of SGC-120 components.

Maximum operating wind speed 14 m/s (31 mph)

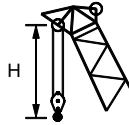
LDJ : Light duty jib

HDJ : Heavy duty jib (Preliminary chart Rev. I)

* : Capacity on main boom hook block available on request.



Drives Mécanismes Antriebe Aandrijvingen	Mode Mode Zuordnung Uitvoering	Speeds Vitesses Geschwindigkeiten Snelheden	Rope diameter Diamètre du câble Seildurchmesser Kabeldiameter	Max. single line pull Effort au brin maxi. Max. Seilzug Max. trekkracht per part	Rope length Longueur du câble Seillänge Kabellengte
	Main hoist No.1 – 6 Levage sur flèche No.1 - 6 Hubwerk 1 - 6 Hijlslier 1 - 6	20 m/min	50 mm	536 kN On layer 7	1300 m
	Boom hoist No.1 - 2 Levage sur flèche No.1 - 2 Hubwerk 1 - 2 Hijlslier 1 - 2	20 m/min	50 mm	536 kN On layer 7	1600 m
	Slewing gear Orientation Drehwerk Zwenkwerk	6°/min			



Hook block/Crane hook Crochet mouflé/Crochet simple

Unterflasche/Hakengehänge Kraanblok/Kraanhaak

Capacity Capacité Tragfähigkeit Capaciteit	Number of sheaves Nombre de poulies Anzahl der Rollen Aantal schijven	Number of lines Nombre de brins Strangzahl Aantal parten	Weight Poids Gewicht Gewicht	« H »
3200t 2 X 1850t	6 X 5	60	102t	14.2 m
800t	2 X 5	10	23.4t	13.6 m

Extra weight can be added to hook, depending on number of lines.

Hook block can be dismantled into other type of hook capacity. (info on request and examples in next table).

Hook block configurations

SWL	Total # sheaves	Sheave blocks	Hooks	Own weight (kg)	Parts	Remark
3200mt	30	6	2 X Ramshorn	101572	VMLA10-001668	Without shackles
3200mt	30	6	2 X Ramshorn	101809	VMLA11-000266	With shackles
2136mt	20	4	2 X Ramshorn	91791	VMLA11-000141	With part 'intermediate plate' (X2)
2136mt	20	4	2 X Ramshorn	79151	VMLA10-001753	Without part 'intermediate plate' (X2)
1068mt	20	4	2 X Ramshorn	92206	VMLA11-000377	Only 12 lines used / under 1600mt SWL 1X Ramshorn possible
1068mt	10	2	2 X Ramshorn	81625	VMLA11-000143	Under 1600mt SWL 1X Ramshorn possible
1068mt	20	4	1 X Ramshorn	84906	VMLA11-000377	Only 12 lines used / under 1600mt SWL 1X Ramshorn possible
1068mt	10	2	1 X Ramshorn	74325	VMLA11-000143	Under 1600mt SWL 1X Ramshorn possible
			1 X Ramshorn	7300	R101520-1,01R	