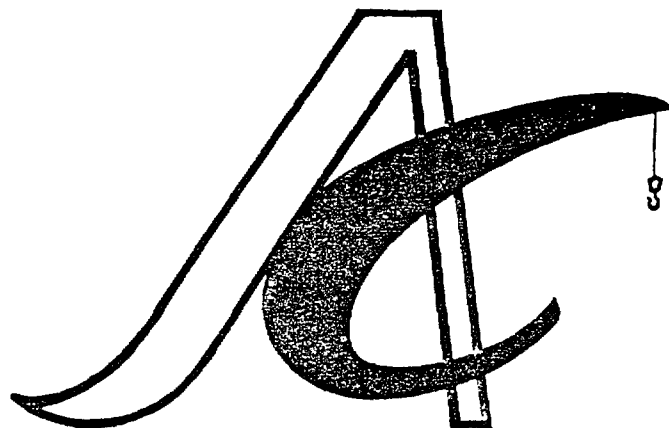


The Crane Specialist



KRUPP 250 TON HYDRAULIC TRUCK CRANE



ANTHONY Crane Rental, Inc.

Superstructure Specifications

Boom

46 ft – 144 ft 4-section boom,
2 full power, 1 power pinned section
Telescoping cycle:
1. section 80 sec.
2. section 70 sec.
High speed:
1. section 45 sec.
2. section 47 sec.

*) Jibs

43 – 82 ft swing-away lattice extension
and inserts
69 – 173 ft power luffing jib

Main Hoist

Axial piston motor with planetary gear
and fail-safe brake
Single line pull max.: 22 000 lbs
Single line speed max.: 390 fpm
Drum diameter: 22"
Rope diameter: 7/8"
Rope length: 1180 ft

*) Auxiliary Hoist

Axial piston motor with planetary gear
and fail-safe brake
Single line pull max.: 16 750 lbs
Single line speed max.: 520 fpm
Drum diameter: 17"
Rope diameter: 3/4"
Rope length: 980 ft

Hook Blocks

120 ton
*) 175, 65, 35, 20 ton
and 9 ton single hook

Boom Elevation

Hydraulic cylinder with integral
holding valve, boom angle
from -1.5 to +82.0 degrees
Elevation cycle: 130 sec.,
High speed: 80 sec.

Swing Gear

Axial piston motor with planetary gear,
holding and service brake,
swing speed 0 – 1,3 rpm variable

Engine

6 cyl. Daimler Benz OM 355,
water-cooled, 240 hp at 2200 rpm
Tank capacity: 75 gal. diesel

Hydraulic system

3 separate circuits: 2 axial piston pumps
with integrated infinitely variable speed
and load control,
1 axial piston pump. Oil cooler.
Tank capacity: 400 gal. hydraulic oil

Control system

Infinite variation of all crane-motions by
hydraulic pilot circuit, dead-man-position

Counterweight

77140 lbs, in 4 sections, hydraulically
removable

Operator's cab

Full vision, all steel, safety glass,
fully adjustable operator's seat
with hydraulic suspension,
independent heating and ventilation,
complete engine instrumentation
and crane operating controls

Safety installations

Hoist limit switch, lock valves, pressure
relief valves.
*) Electronic load moment safety device
with automatic cut-out and indicators
for load moment and working radius,
lowering limit switch.

*) Optional items

Carrier Specifications

Chassis

Krupp heavy-duty 6-axle carrier, welded
box-type frame from high tensile steel

Engine

12 cyl. Daimler Benz OM 404,
water-cooled, 420 hp at 2400 rpm
Tank capacity: 150 gal.

Transmission

Allison 5 speed automatic gear-box
MAN transfer case, 2 speed with
differential lock

Axles

1. driven steering axle 4. driven axle
2. steering axle 5. driven axle
3. steering axle 6. steering axle
driven axles = planetary axles
4. + 5. axle with interaxle
differential lock

Suspension

1. and 2. axle parabolic leaf springs
3. – 6. axle hydropneumatic suspension
system and axle lock-outs

Tires

16 tires 14.00 - 24 PR 22
4th and 5th axle dual tires

Steering

ZF semi-integral ball-nut hydraulic
power steering

Brakes

Service brake:
pneumatic dual-circuit acting on all
wheels
Permanent brake:
retarder of Allison automatic
transmission
Auxiliary brake:
pneumatically operated spring-loaded
brake acting on 1st to 3rd and 6th axle

Driver's cab

All-steel, two-man-design with bunk,
safety glass, adjustable hydraulically
suspended seats, independent heating
and ventilation. Complete instrumen-
tation and driving controls

Outriggers

Independent horizontal and vertical
hydraulic motion of each beam.
Control on each side of chassis.
Sight level device.

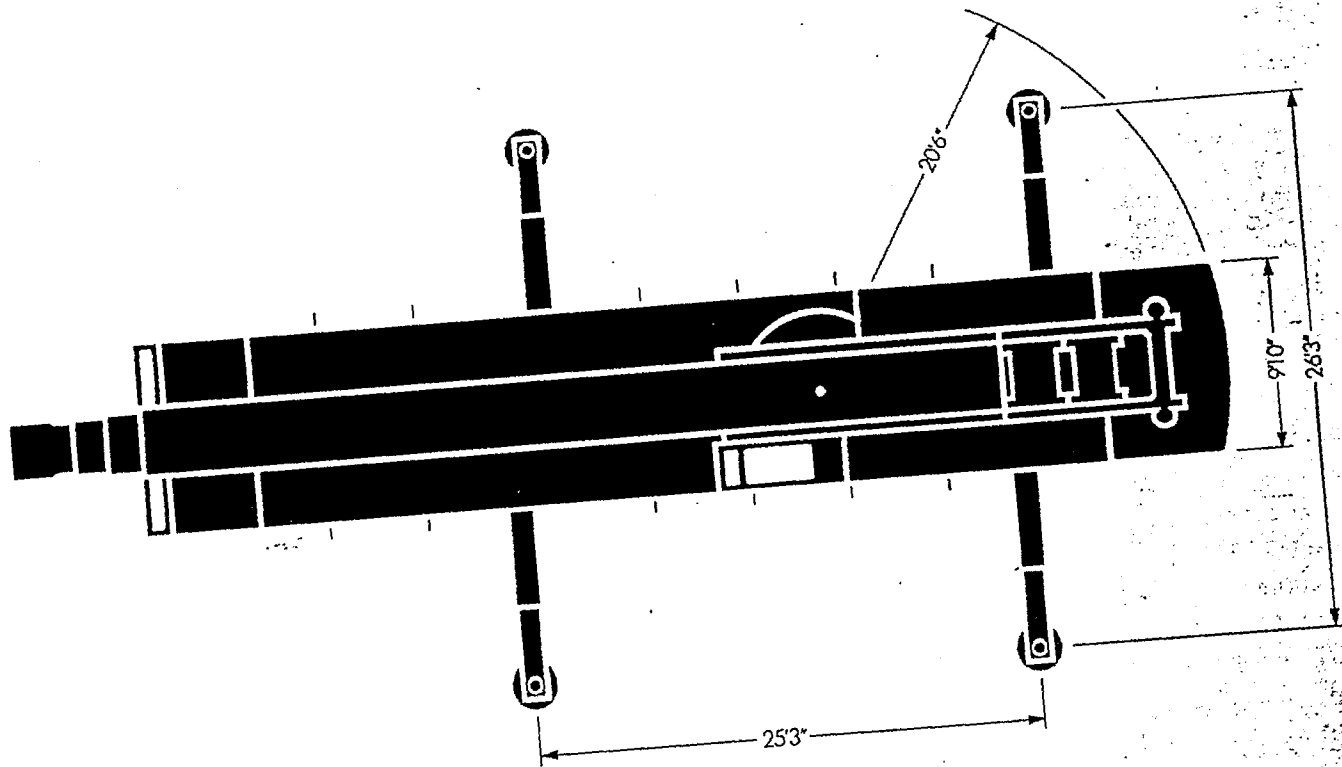
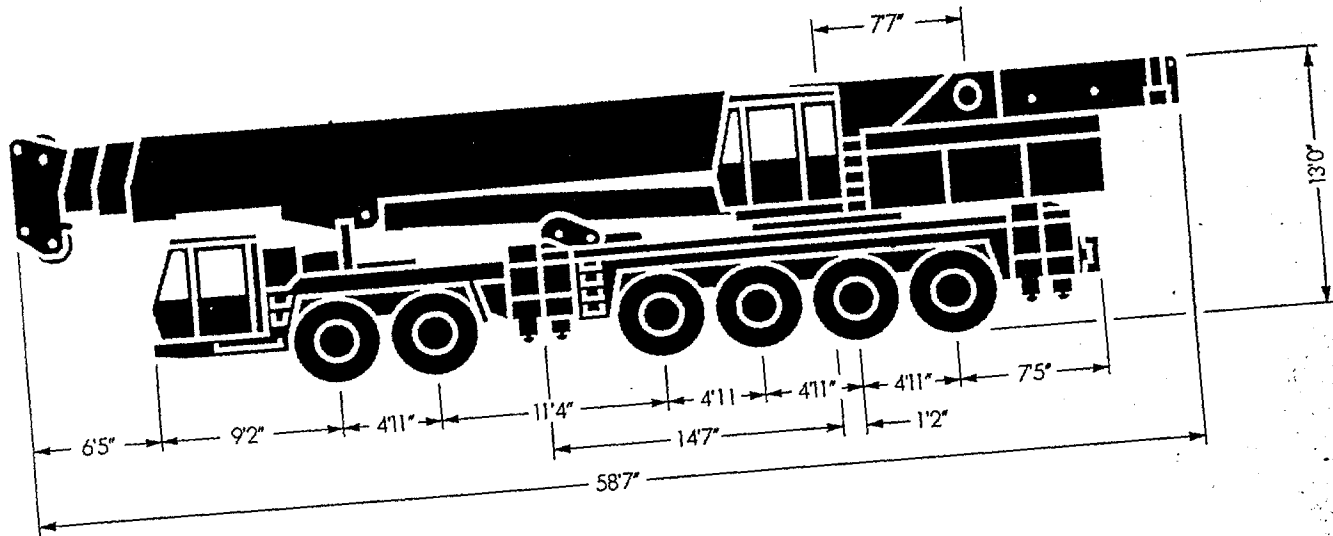
Electrical equipment

Three-phase alternator 28 V/55 A
2 batteries 12 V/180 Ah

Performance

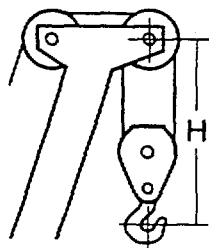
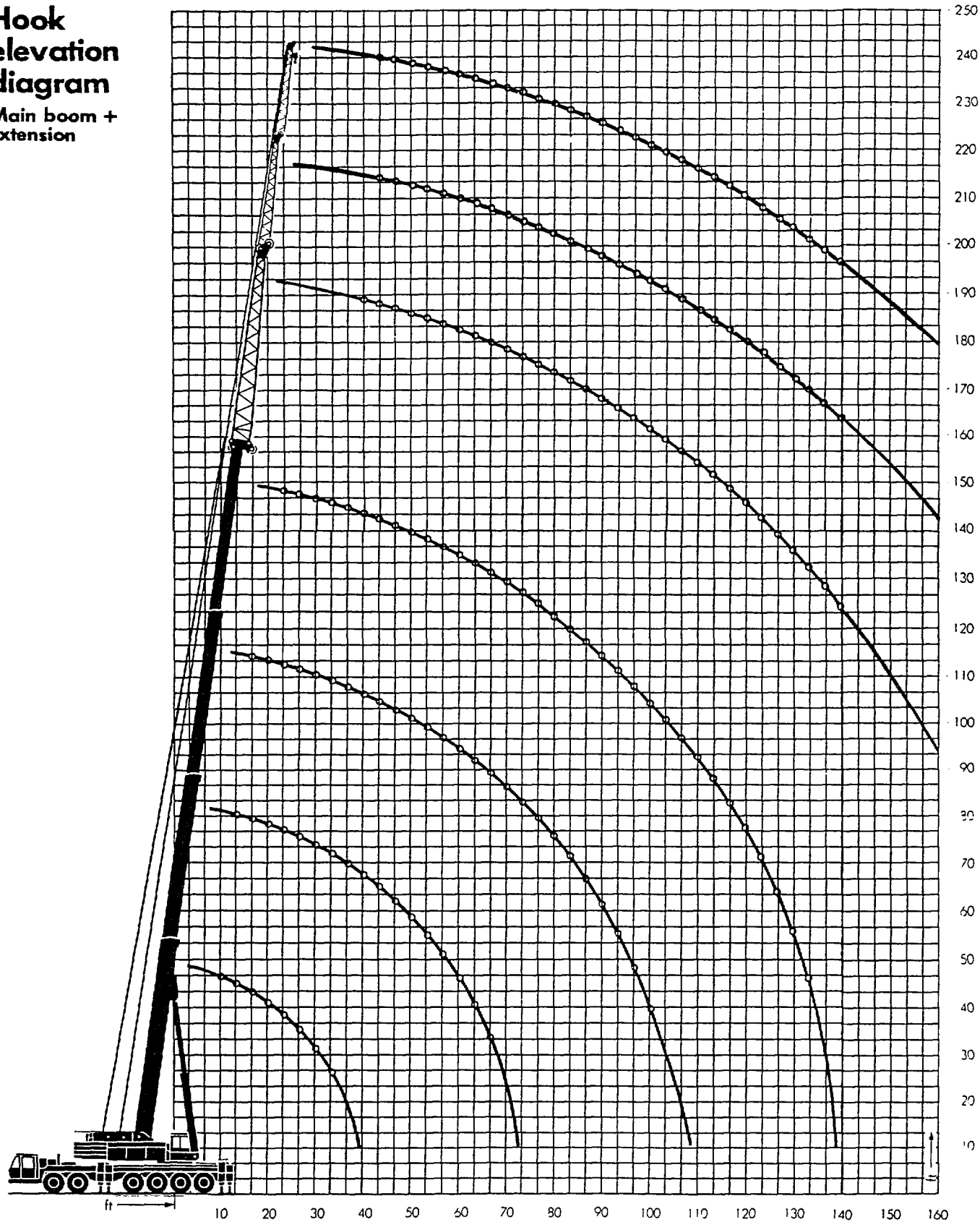
Travelling speeds: max. 42 mph
min. 0,1 mph
Gradeability: 40 %
Turning radius: 54 ft

Dimensions



Hook elevation diagram

Main boom + extension

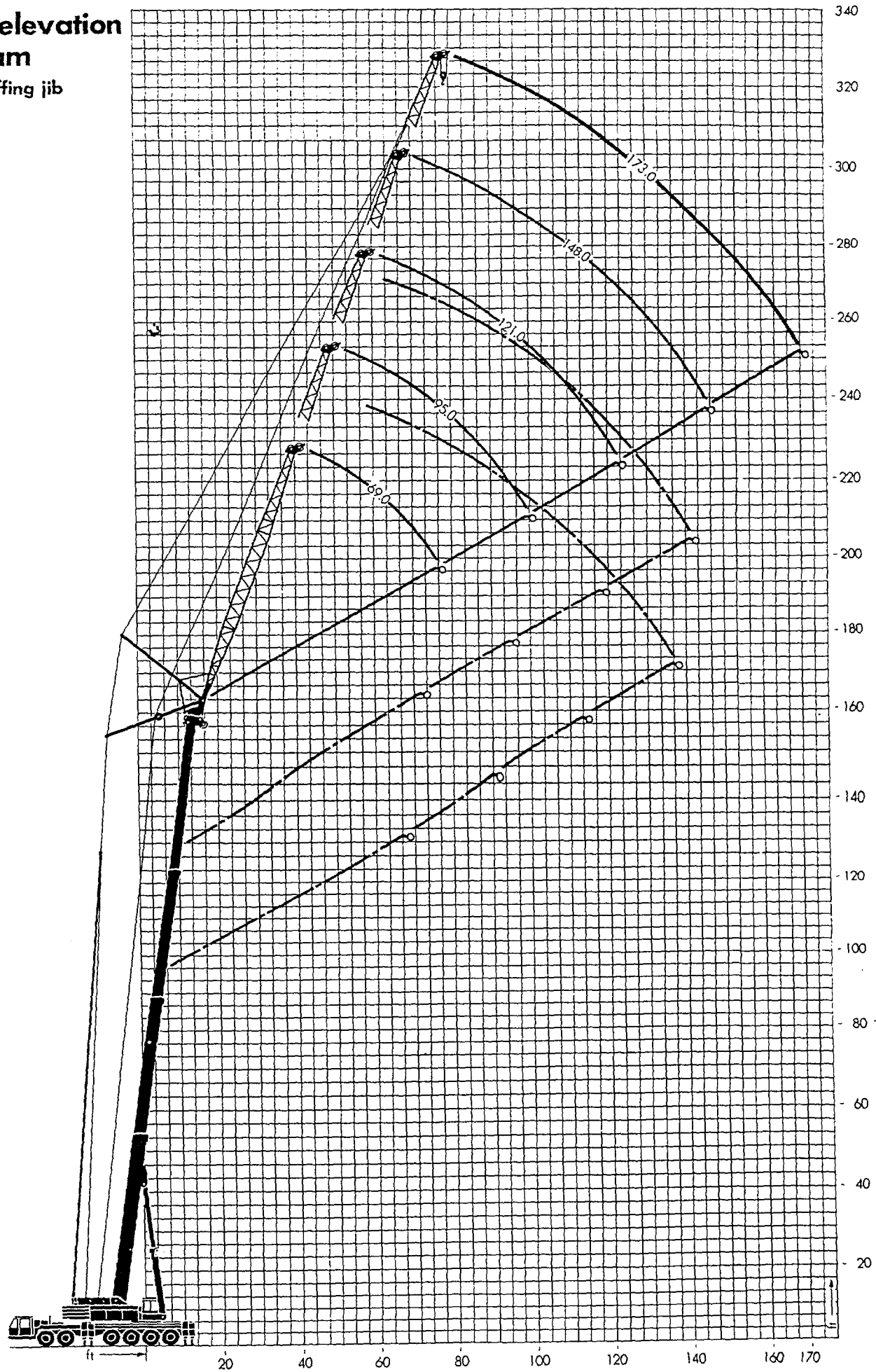


Hooks

Capacity	ton	175	120	65	35	20	9
Sheaves		12	6	4	2	1	0
Distance H	ft	9'6"	9'6"	8'10"	7'7"	7'7"	8'10"
Weight	ton	2.2	1.8	1.1	0.66	0.55	0.3

Hook elevation diagram

Power luffing jib



Lifting capacities in 1000 lbs on outriggers

360° Main boom + swing-away extension

Radius	Boom length (ft)														
	46.0			79.0*					111.0						
	Hook height max. (ft)														
	48.0			80.0					112.0						
lft)	Counterweight in 1000 lbs														
	77.1	33.0	0.0	77.1	33.0	33.0	0.0	0.0	77.1	77.1	33.0	33.0	0.0	0.0	
						**		**		***		***		***	
10*	500.0														
10	440.0	350.0	218.2												
12	374.0	298.0	214.7												
15	304.0	239.0	204.0	244.0	220.4	88.2	191.8	88.2							
20	226.0	175.7	148.2	226.0	175.7	88.2	151.4	88.2	147.4	88.2	134.5	88.2	130.0	88.2	
25	179.0	132.8	108.4	178.0	130.1	82.7	110.7	82.7	147.4	82.7	129.7	82.7	113.0	82.7	
30	145.0	107.9	74.7	145.0	108.2	72.0	77.0	72.0	134.8	72.0	108.2	72.0	77.6	72.0	
35				116.0	86.1	63.8	54.0	63.1	114.4	63.8	86.6	63.8	54.7	61.2	
40				100.0	67.2	57.3	38.7	49.5	100.0	57.3	67.8	57.3	39.6	46.8	
45				85.4	53.4	51.7	28.5	38.7	85.6	51.7	54.2	51.7	29.2	36.3	
50				73.6	42.9	47.4	21.0	30.9	74.8	47.4	43.8	47.4	21.7	28.5	
55				62.0	34.5	43.3	15.3	24.9	62.8	43.5	35.4	41.3	16.0	22.7	
60				53.0	28.0	37.2	10.0	19.9	54.2	40.3	28.8	35.1	11.6	18.0	
65				46.0	22.7	31.7	7.0	16.1	46.8	37.8	23.5	29.7	7.9	14.1	
70									40.8	35.5	19.2	25.2	4.9	11.1	
75									35.4	33.5	15.5	21.5		8.4	
80									31.2	31.5	12.3	18.3		6.3	
85									27.2	29.5	9.6	15.6			
90									23.8	26.1	7.3	13.2			
95									20.8	23.1	5.1	11.0			
100															
105															
110															
115															
120															
125															
130															
135															
140															
145															
150															
155	Outrigger base 21'4"														
160															

* 10 ft radius over rear only with optional equipment fitted

*1) 79 ft boom - section 1 and 2 equally extended

** 3rd section fully extended

*** 3rd section fully extended, section 1 and 2 equally extended

Load capacities above bold line are based on structural strength, and tipping must not be relied upon as a limitation of lifting capacity.

Rated loads must not be exceeded.

Notes for lifting capacities

Rated loads do not exceed 85% of tipping load with the machine properly levelled on firm ground.

360° duties on outriggers fully extended, except free on wheel duties as noted.

Note counterweight required as listed in relevant lifting capacity columns.

For safe crane operation due allowance must be made to compensate for high winds, side load, pendulum action and other hazardous conditions. No side pull permitted.

Hook block and slings and/or boom attachments are considered part of the load and their weight must be deducted from the rated lifting capacity to determine the net load.

360° Power luffing jib

Counterweight 77.140 lbs

144.0		+ 43.0	+ 62.0	+ 82.0
147.0		190.0	208.0	228.0
77.1	33.0	0.0	77.1	77.1
99.0	88.5	88.5		
95.6	86.9	84.5		
91.0	83.1	61.6		
86.6	73.7	45.9	48.4	28.7
82.4	59.8	35.2	46.4	28.7
77.8	49.3	27.4	42.4	28.7
68.0	40.9	21.6	38.8	28.7
58.8	34.2	17.0	35.2	28.7
51.6	28.8	13.2	32.6	28.1
46.0	24.5	10.2	30.6	26.2
40.4	20.6	7.5	28.2	24.2
35.8	17.5	5.4	26.4	22.4
32.0	14.7	3.4	24.6	21.0
28.8	12.3		23.0	19.7
25.6	10.2		21.6	18.3
23.0	8.4		20.2	17.1
20.8	6.8		19.0	16.1
18.8	5.3		17.8	15.2
16.8	3.9		16.2	14.3
14.8	2.7		14.4	12.9
13.3			12.8	11.8
11.6			11.4	10.4
			10.2	9.3
				8.1
				7.1
				6.1
				5.2
				4.5

Boom must be fully extended when lifting with the swing-away extension.

Consult crane manual to determine weight reduction for load handling devices and boom attachments.

Operate crane strictly in accordance with operator's manual.

Main boom ft	Radius ft	Jib length (ft)				
		69	95	121	148	175
79 *1	40	81.4				
	45	73.0				
	50	62.9	52.5			
	55	54.5	51.9	37.7		
	60	48.5	49.7	37.4		
	65	43.8	43.3	37.3	24.2	
	70		39.2	37.0	24.0	
	75		35.6	35.3	23.6	
	80		32.5	32.3	23.3	14.0
	85		30.1	29.3	22.9	13.7
	90			27.4	22.7	13.2
	95			25.5	22.3	12.8
	100				23.8	21.8
	105				22.3	21.2
	110				20.8	19.6
	115					18.4
	120					17.3
	125					16.3
	130					15.6
	135					10.2
	140					9.8
	145					9.5
	150					9.2
	155					8.7
	111	40	56.1			
45		55.8				
50		51.9				
55		47.3	37.5			
60		42.9	37.5	26.5		
65		38.8	37.5	26.5		
70			36.7	26.5	17.2	
75			35.0	26.5	17.1	
80			32.7	26.5	17.0	
85			30.4	26.5	16.8	10.1
90			28.2	26.0	16.7	9.5
95				25.1	16.4	9.4
100					23.7	16.3
105					22.1	16.1
110					20.7	15.9
115						15.8
120						15.5
125						15.4
130						15.2
135						14.9
140						10.4
145						10.4
150						10.4
155						10.4
144		50	27.6			
	60	27.6	21.0			
	70	27.6	21.0	15.0		
	80	27.6	21.0	15.0	10.4	
	90		21.0	15.0	10.4	4.4
	100		21.0	15.0	10.4	4.4
	110			15.0	10.4	4.4
	120			15.0	10.4	4.4
	130				10.4	4.4
	140				10.4	4.4
150					4.4	
160					4.4	
170					4.4	