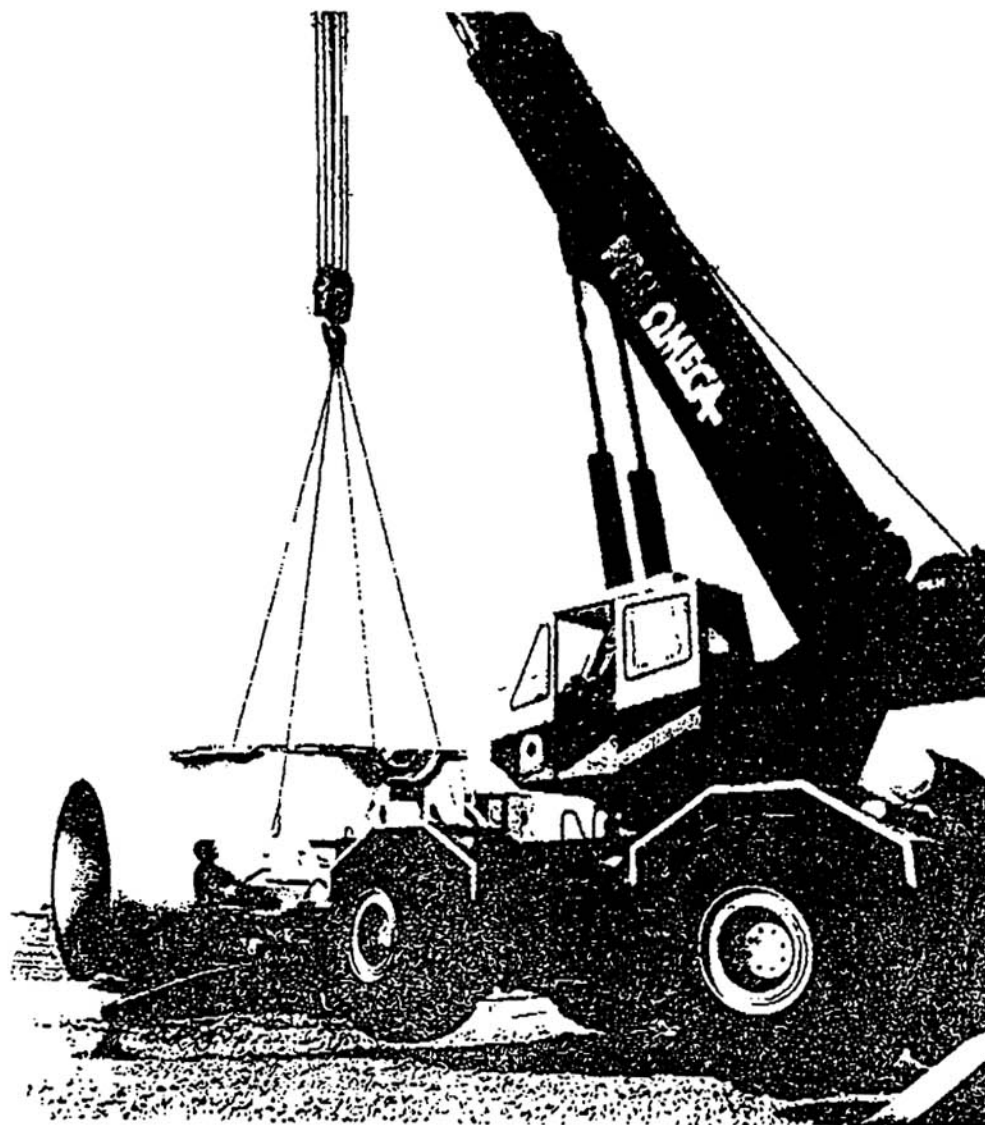




# GUAY

## P&H OMEGA<sup>®</sup>-65

**66-ton Rough Terrain Crane  
189-ft. (57.6m) maximum tip height**

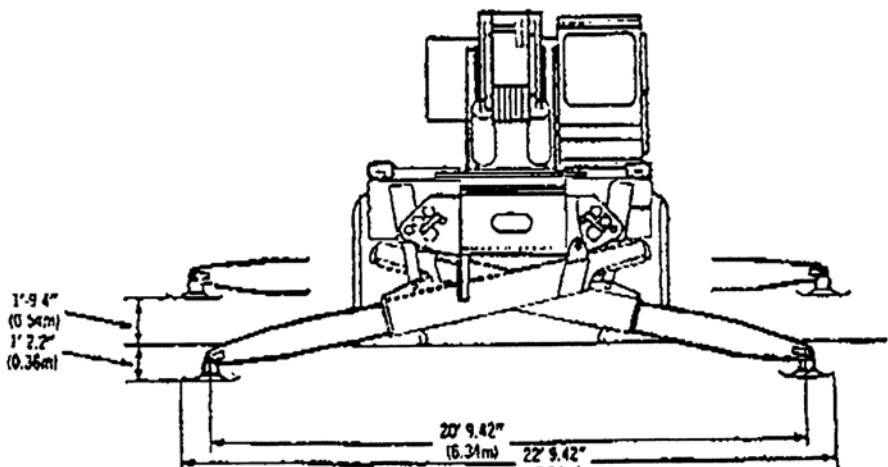
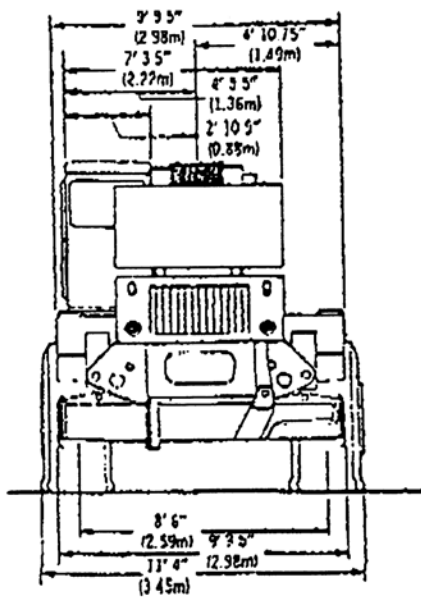
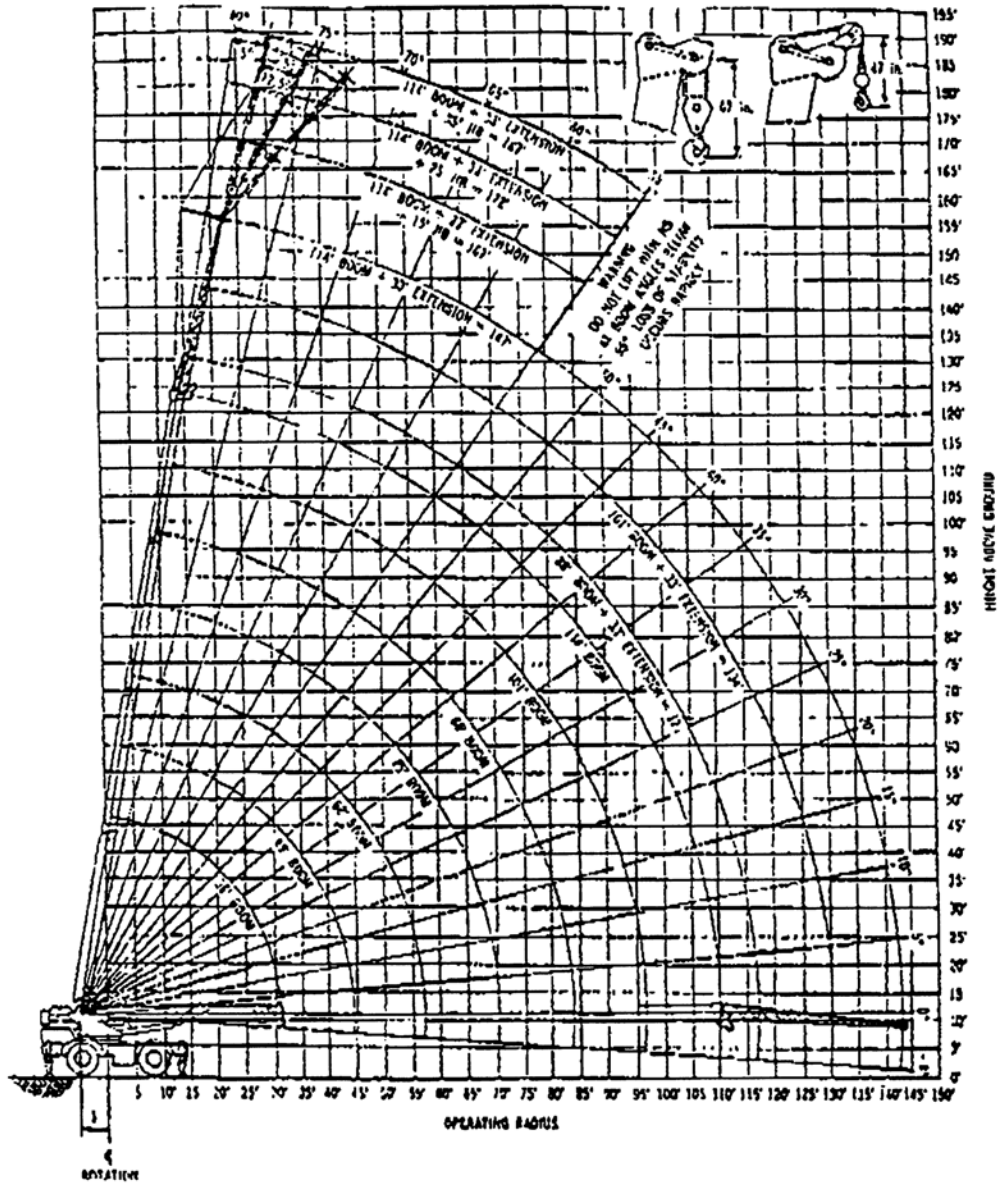


- Excellent reach afforded by telescoping 114 ft (34.7 m) 4 section boom. Add 33 ft (10.1 m) lattice boom extension and 35 ft (10.7 m) jib for total length of 182 ft (55.5 m)
- Telescope rated loads for precise placement. Semi-fixed cylinder mounts decrease cylinder deflection under load and increase telescoping capacity
- Superior lifting performance provided by rectangular full depth four-plate OMEGA boom that is welded inside and out
- Fast, solid set-up with P&H scissors type outriggers. Excellent stability due to 22'-2" (6.76 m) outrigger stance
- Total operator comfort means less fatigue and greater production. Spacious OMEGA cab module allows placement of controls "in the palm of your hand" lots of leg and elbow room and full vision of all activities
- A duty-cycle machine — OMEGA's powerful winches offer high line speeds, pull and controlled free fall. VOLUMATIK<sup>®</sup> hydraulic system provides optimum oil flow for fast crane functioning
- Less downtime — OMEGA is "Plt-Stop" maintenance-proven. It's industry's most serviceable crane — engineered for parts commonality, accessibility and fast tear-down.



# Working ranges

four section boom





## PCSA CLASS 10 — 220 full powered boom with outriggers fully extended

rated crane loads in pounds — boom in 360° and over front w

|                    |   | BOOM LENGTH (FEET) ALL SECTIONS EQUALLY EXTENDED |        |                      |                   |        |                      |                   |        |                      |                   |       |                      |                   |       |                      |      |       |    |  |  |  |  |  |  |  |  |  |  |  |  |
|--------------------|---|--|--------|----------------------|-------------------|--------|----------------------|-------------------|--------|----------------------|-------------------|-------|----------------------|-------------------|-------|----------------------|------|-------|----|--|--|--|--|--|--|--|--|--|--|--|--|
|                    |   | 35   |        | 42                   |                   | 49     |                      | 62                |        | 75                   |                   |       |                      |                   |       |                      |      |       |    |  |  |  |  |  |  |  |  |  |  |  |  |
| LOAD RADIUS (FEET) | LOADED BOOM ANGLE Δ°  | RATED LOAD POUNDS                                |        | LOADED BOOM ANGLE Δ° | RATED LOAD POUNDS |        | LOADED BOOM ANGLE Δ° | RATED LOAD POUNDS |        | LOADED BOOM ANGLE Δ° | RATED LOAD POUNDS |       | LOADED BOOM ANGLE Δ° | RATED LOAD POUNDS |       | LOADED BOOM ANGLE Δ° |      |       |    |  |  |  |  |  |  |  |  |  |  |  |  |
|                    |   | 360°   | FRONT  |                      | 360°              | FRONT  |                      | 360°              | FRONT  |                      | 360°              | FRONT |                      | 360°              | FRONT |                      |      |       |    |  |  |  |  |  |  |  |  |  |  |  |  |
| 10                 | 70  | 132000   | 132000 | 73                   | 121000            | 121000 | 76                   | 113000            | 113000 | 79                   | 95000             | 96000 |                      |                   |       |                      |      |       |    |  |  |  |  |  |  |  |  |  |  |  |  |
| 12                 | 67  | 115000   | 115000 | 70                   | 110000            | 110000 | 73                   | 104000            | 104000 | 77                   | 91000             | 91000 | 80                   | 84000             | 84000 |                      |      |       |    |  |  |  |  |  |  |  |  |  |  |  |  |
| 15                 | 61  | 94000  | 94000  | 66                   | 89000             | 89000  | 70                   | 87000             | 87000  | 74                   | 83000             | 83000 | 78                   | 76000             | 76000 |                      |      |       |    |  |  |  |  |  |  |  |  |  |  |  |  |
| 20                 | 51  | 68000  | 68000  | 58                   | 67000             | 67000  | 63                   | 66000             | 66000  | 69                   | 64000             | 64000 | 74                   | 63000             | 63000 | 77                   |      |       |    |  |  |  |  |  |  |  |  |  |  |  |  |
| 25                 | 39  | 51000  | 51000  | 49                   | 50000             | 50000  | 56                   | 49000             | 49000  | 64                   | 48000             | 48000 | 70                   | 47000             | 47000 | 73                   |      |       |    |  |  |  |  |  |  |  |  |  |  |  |  |
| 30                 | 19  | 38100  | 41000  | 38                   | 38100             | 41000  | 48                   | 38100             | 41000  | 59                   | 38100             | 41000 | 65                   | 38100             | 41000 | 70                   |      |       |    |  |  |  |  |  |  |  |  |  |  |  |  |
| 35                 | TELESCOPE CYLINDERS MUST BE FULLY RETRACTED AND AGAINST STOPS                                 |  |        | 22                   | 28300             | 34000  | 39                   | 28300             | 34000  | 53                   | 28300             | 34000 | 61                   | 28300             | 34000 | 66                   |      |       |    |  |  |  |  |  |  |  |  |  |  |  |  |
| 40                 |   |  |        | 27                   | 22000             | 27600  | 47                   | 22000             | 27600  | 56                   | 22000             | 27600 | 62                   |                   |       |                      |      |       |    |  |  |  |  |  |  |  |  |  |  |  |  |
| 45                 |   |  |        | 39                   | 17700             | 22200  | 51                   | 17700             | 22200  | 68                   |                   |       |                      |                   |       |                      |      |       |    |  |  |  |  |  |  |  |  |  |  |  |  |
| 50                 |   |  |        | 31                   | 14100             | 17800  | 46                   | 14100             | 17800  | 54                   |                   |       |                      |                   |       |                      |      |       |    |  |  |  |  |  |  |  |  |  |  |  |  |
| 55                 |   |  |        | 18                   | 11300             | 14500  | 40                   | 11300             | 14500  | 50                   |                   |       |                      |                   |       |                      |      |       |    |  |  |  |  |  |  |  |  |  |  |  |  |
| 60                 | RATINGS ABOVE THE HEAVY LINE ARE BASED ON STRUCTURAL COMPETENCE AND NOT ON MACHINE STABILITY. |  |        |                      |                   |        |                      |                   |        |                      |                   |       |                      |                   |       | 33                   | 9400 | 12200 | 45 |  |  |  |  |  |  |  |  |  |  |  |  |
| 65                 |   |  |        |                      |                   |        |                      |                   |        |                      |                   |       |                      |                   |       | 24                   | 7600 | 10100 | 40 |  |  |  |  |  |  |  |  |  |  |  |  |
| 70                 |   |  |        |                      |                   |        |                      |                   |        |                      |                   |       |                      |                   |       |                      |      |       |    |  |  |  |  |  |  |  |  |  |  |  |  |
| 80                 |   |  |        |                      |                   |        |                      |                   |        |                      |                   |       |                      |                   |       |                      |      |       |    |  |  |  |  |  |  |  |  |  |  |  |  |
| 90                 |   |  |        |                      |                   |        |                      |                   |        |                      |                   |       |                      |                   |       |                      |      |       |    |  |  |  |  |  |  |  |  |  |  |  |  |
| 100                | WHEN LIFTING A LOAD ALL SECTIONS OF THE BOOM MUST BE EXTENDED EQUALLY                         |  |        |                      |                   |        |                      |                   |        |                      |                   |       |                      |                   |       |                      |      |       |    |  |  |  |  |  |  |  |  |  |  |  |  |
| 110                |   |  |        |                      |                   |        |                      |                   |        |                      |                   |       |                      |                   |       |                      |      |       |    |  |  |  |  |  |  |  |  |  |  |  |  |
| 120                |   |  |        |                      |                   |        |                      |                   |        |                      |                   |       |                      |                   |       |                      |      |       |    |  |  |  |  |  |  |  |  |  |  |  |  |
| 130                |   |  |        |                      |                   |        |                      |                   |        |                      |                   |       |                      |                   |       |                      |      |       |    |  |  |  |  |  |  |  |  |  |  |  |  |
|                    |   |  |        |                      |                   |        |                      |                   |        |                      |                   |       |                      |                   |       |                      |      |       |    |  |  |  |  |  |  |  |  |  |  |  |  |

**WARNING:**

1 FOR BOOM LENGTHS LESS THAN 134 FEET AND LESS THAN 147 FEET THE RATED LOADS ARE DETERMINED BY BOOM ANGLE ONLY IN THE COLUMNS HEADED BY 134 FOOT BOOM AND 147 FOOT BOOM FOR ANGLES NOT SHOWN USE RATING OF NEXT LOWER BOOM ANGLE

2 DO NOT EXCEED 100 FOOT OVERSIDE ON 114 FOOT BOOM A: WILL OCCUR

3 DO NOT EXCEED 110 FOOT OVERSIDE ON 134 OR 147 FOOT TIPPING WILL OCCUR.

### “on rubber”

rated crane loads in pounds — mi

**WARNING:** WITHOUT OUTRIGGER\* LIFTS WITH JIB OR BOOM EXTENSION IN WORKING POSITION ARE PROHIBITED

TO HELP PREVENT TIPPING CONDITIONS WHEN LIFTING ON RUBBER IT IS RECOMMENDED THAT -

- 1 MINIMUM BOOM LENGTHS BE USED NOT EXCEEDING 75 FEET
- 2 OUTRIGGERS BE EXTENDED AS FAR AS POSSIBLE AND CLEAR OF GROUND

WHEN LIFTING A LOAD ALL SECTIONS OF THE BOOM MUST BE EXTENDED EQUALLY

| RATINGS FOR FULL POWER BOOM |            |                    | LOAD RADIUS (FEET) |
|-----------------------------|------------|--------------------|--------------------|
| STATIONARY 360°             | OVER FRONT |                    |                    |
|                             |            | STATIONARY & CREEP | 2 1/2 MPH          |
| 44200                       | 70900      | 54800              | 10                 |
| 35600                       | 62200      | 46800              | 12                 |
| 26400                       | 52300      | 37800              | 15                 |
| 16300                       | 40300      | 27600              | 20                 |
| 9800                        | 30700      | 20800              | 25                 |
| 5700                        | 21100      | 15900              | 30                 |
| 3400                        | 15600      | 12700              | 35                 |
| 1800                        | 11900      | 10200              | 40                 |
| —                           | 9400       | 8300               | 45                 |
| —                           | 7000       | 6500               | 50                 |
| —                           | 4000       | 3900               | 60                 |

32U1783

**WARNING:** DO NOT EXCEED RATE OR A TIPPING CONDIT

## JIB ratings and deductions from rated loads

| MAXIMUM JIB LOAD RATINGS IN POUNDS |                    |      |      |      |
|------------------------------------|--------------------|------|------|------|
| MINIMUM BOOM ANGLE                 | JIB LENGTH IN FEET |      |      |      |
|                                    | 15                 | 25   | 35   |      |
| 0° OFFSET                          | 80°                | 9100 | 7500 | 5000 |
|                                    | 75°                | 7850 | 6500 | 4400 |
|                                    | 70°                | 6650 | 5500 | 3800 |
|                                    | 65°                | 5500 | 4500 | 3200 |
|                                    | 60°                | 4550 | 3700 | 2900 |
| 12.5° OFFSET                       | 80°                | 8100 | 6200 | 4500 |
|                                    | 75°                | 7050 | 5500 | 3800 |
|                                    | 70°                | 5700 | 4500 | 3000 |
|                                    | 65°                | 4700 | 3700 | 2450 |
|                                    | 60°                | 3950 | 3100 | 2000 |
| 25° OFFSET                         | 80°                | 7300 | 5400 | 4000 |
|                                    | 75°                | 5950 | 4500 | 3200 |
|                                    | 70°                | 4700 | 3600 | 2500 |
|                                    | 65°                | 3800 | 2900 | 2000 |
|                                    | 60°                | 3250 | 2500 | 1500 |

### JIB CAPACITY NOTES:

1. MAXIMUM JIB LOAD RATINGS ARE BASED ON STRUCTURAL COMPETENCE AND DO NOT EXCEED 85% OF TIPPING LOAD WITH FULLY EXTENDED OUTRIGGERS. USE OF OUTRIGGERS IS REQUIRED WHEN BOOM IS EQUIPPED WITH JIB.
2. FOR BUCKET RATINGS ON JIB DEDUCT 20% FROM MAXIMUM JIB LOAD RATINGS.
3. WARNING: DO NOT LIFT WITH JIB AT BOOM ANGLES BELOW 55° LOSS OF STABILITY OCCURS RAPIDLY.
4. WARNING: DO NOT EXCEED 120 FOOT OPERATING RADIUS WITH LIFTED 15, 25 OR 35 FOOT JIB OR A TIPPING CONDITION WILL OCCUR.

| DEDUCTIONS FROM RATED LOADS FOR 33 FOOT BOOM EXTENSION WITH MANUAL EXTENDED OR RETRACTED |                     |
|--|---------------------|
| HOOK BLOCK ON BOOM POINT   |                     |
| HOOK BLOCK   | DEDUCTION IN POUNDS |
| BALL HOOK 8.5 TON  | 300                 |
| 1 SHEAVE 20 TON  | 500                 |
| 5 SHEAVE 60 TON  | 1000                |
| ERECTED JIB WITH BALL HOOK   |                     |
| JIB LENGTH IN FEET   | DEDUCTION IN POUNDS |
| 15   | 1400                |
| 25   | 1700                |
| 35   | 2000                |

| DEDUCTIONS FROM RATED JIB LOADS |                          |     |     |                                      |     |     |
|---------------------------------|--------------------------|-----|-----|--------------------------------------|-----|-----|
| HOOK BLOCK                      | DEDUCTIONS IN POUNDS     |     |     |                                      |     |     |
|                                 | HOOK BLOCK ON BOOM POINT |     |     | HOOK BLOCK ON 33 FOOT BOOM EXTENSION |     |     |
|                                 | JIB LENGTH IN FEET       |     |     |                                      |     |     |
|                                 | 15                       | 25  | 35  | 15                                   | 25  | 35  |
| BALL HOOK 8.5 TON               | 300                      | 250 | 200 | 350                                  | 300 | 250 |
| 1 SHEAVE 20 TON                 | 500                      | 450 | 400 | 600                                  | 500 | 550 |
| 5 SHEAVE 60 TON                 | 800                      | 750 | 700 |                                      |     |     |

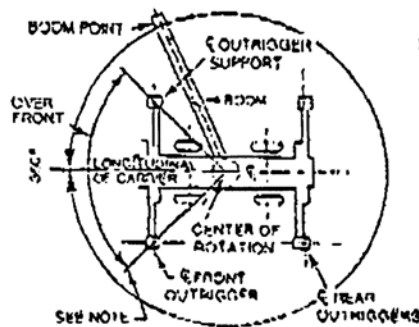
| DEDUCTIONS FROM RATED BOOM LOADS                              |                   |                     |
|---|-------------------|---------------------|
| BOOM CONFIGURATION  |                   | DEDUCTION IN POUNDS |
| RETRACTED 33 FOOT BOOM EXTENSION MANUAL EXTENDED OR RETRACTED | 20 TON 1 SHEAVE   | 3500                |
|   | 8.5 TON BALL HOOK | 2700                |
| ERECTED 15 FOOT JIB WITH BALL HOOK                            |                   | 4500                |
| ERECTED 25 FOOT JIB WITH BALL HOOK                            |                   | 5200                |
| ERECTED 35 FOOT JIB WITH BALL HOOK                            |                   | 6900                |
| HOOK BLOCK WEIGHTS IN POUNDS                                  |                   |                     |
| 5 SHEAVE 60 TON   | 1 SHEAVE 20 TON   | BALL HOOK 8.5 TON   |
| 1200  | 800               | 300                 |

WARNING: MAIN BOOM RATINGS MUST BE REDUCED BY WEIGHT OF FIXED BOOM ATTACHMENTS SEE TABLE

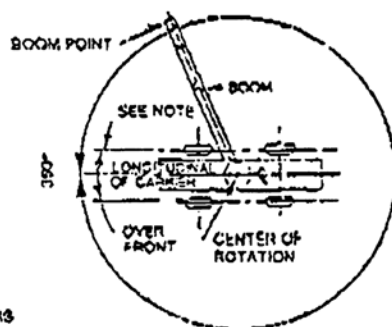
### DEDUCTIONS FOR OPTIONAL EQUIPMENT

FOR MACHINES EQUIPPED WITH AN AUXILIARY SHEAVE, OR AN ELECTRICAL ANTI-TWO BLOCK, OR A LOAD MOMENT DEVICE 300 LBS. MUST BE DEDUCTED FROM ALL STABILITY RATINGS BELOW THE HEAVY LINE.

| HOIST LINE WIRE ROPE |                    |                                   |
|----------------------|--------------------|-----------------------------------|
| TYPE                 | 1/2" x 8 x 19 IWRC | P & H TYPE 25 1/2" x 8 x 25F IWRC |
| BRKING STRNGTH       | 51 800             | 58 800                            |



ON OUTRIGGERS



ON RUBBER

#### NOTE

THESE LINES DETERMINE ANY LIMITING POSITION OF ANY LOAD FOR OPERATION WITHIN WORKING AREAS INDICATED

### AREAS OF OPERATION

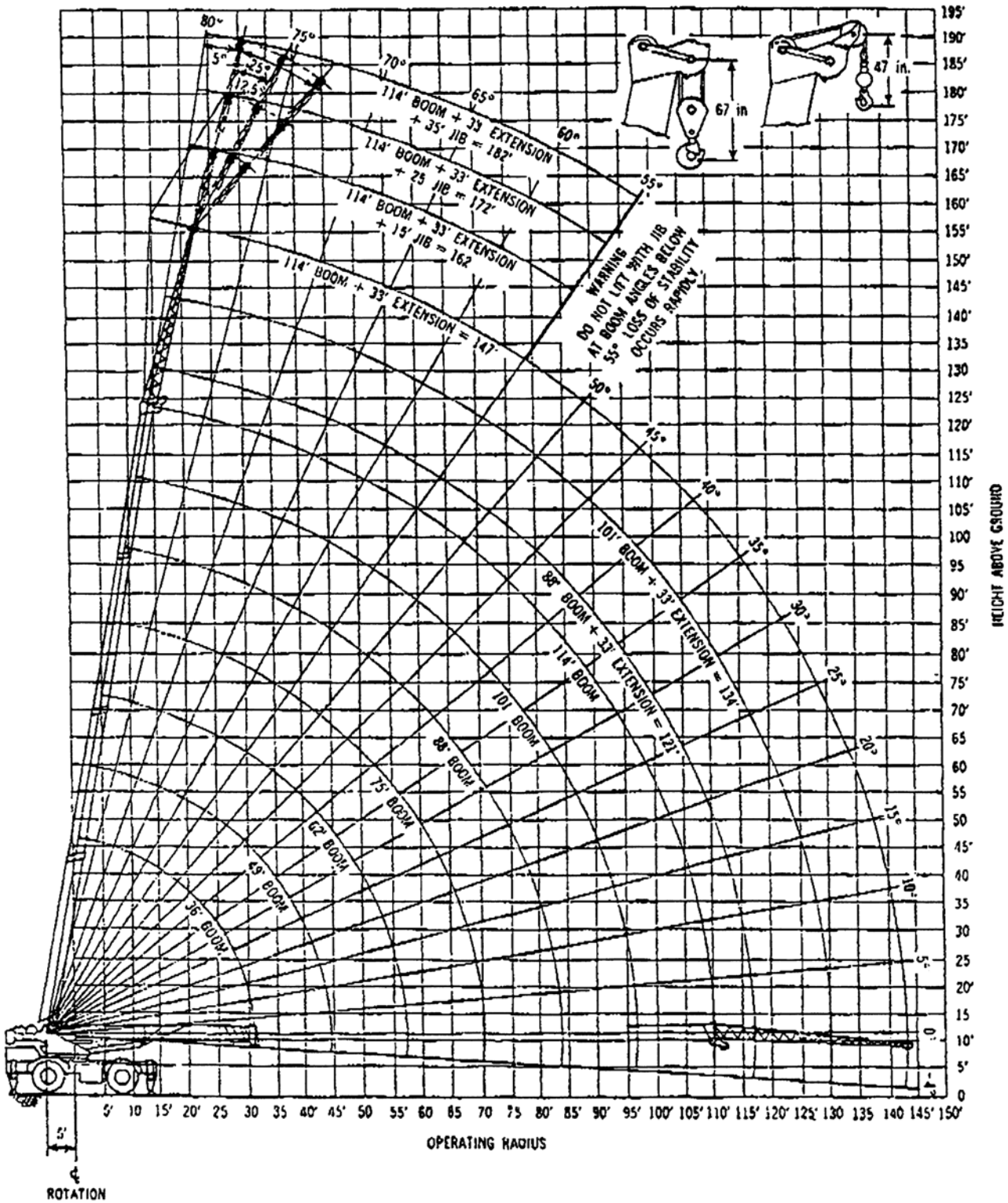
OPERATION OF THIS EQUIPMENT IN EXCESS OF RATED LOADS AND DISREGARD OF INSTRUCTIONS VOID WARRANTY

| PERMISSIBLE HOIST LINE LOAD IN POUNDS |                                   |
|---------------------------------------|-----------------------------------|
| PARTS OF LINE                         | P & H #16 MAIN OR AUXILIARY WINCH |
| 1                                     | 12,000                            |
| 2                                     | 24,000                            |
| 3                                     | 36,000                            |
| 4                                     | 48,000                            |
| 5                                     | 60,000                            |
| 6                                     | 72,000                            |
| 7                                     | 84,000                            |
| 8                                     | 96,000                            |
| 9                                     | 108,000                           |
| 10                                    | 120,000                           |



# Working ranges

## four section boom with 9,000 lbs. counterweight





boom with 9,000 lbs. counterweight  
areas with outriggers fully extended and set

| BOOM EXTENDED EQUALLY         |                      |                                |                      |                                |                      |                                |                          |                                |                          |                                |                              | LOAD<br>RADIUS<br>IN<br>FEET |      |      |      |    |
|-------------------------------|----------------------|--------------------------------|----------------------|--------------------------------|----------------------|--------------------------------|--------------------------|--------------------------------|--------------------------|--------------------------------|------------------------------|------------------------------|------|------|------|----|
| LOADED<br>BOOM<br>ANGLE<br>Δ° | 88                   |                                | 101                  |                                | 114                  |                                | 134 (SEE WARNING NOTE 1) |                                | 147 (SEE WARNING NOTE 1) |                                | LOAD<br>RADIUS<br>IN<br>FEET |                              |      |      |      |    |
|                               | RATED LOAD<br>POUNDS | LOADING<br>BOOM<br>ANGLE<br>Δ° | RATED LOAD<br>POUNDS | LOADING<br>BOOM<br>ANGLE<br>Δ° | RATED LOAD<br>POUNDS | LOADING<br>BOOM<br>ANGLE<br>Δ° | RATED LOAD<br>POUNDS     | LOADING<br>BOOM<br>ANGLE<br>Δ° | RATED LOAD<br>POUNDS     | LOADING<br>BOOM<br>ANGLE<br>Δ° |                              |                              |      |      |      |    |
|                               |                      |                                |                      |                                |                      |                                |                          |                                |                          |                                |                              | 10                           |      |      |      |    |
|                               |                      |                                |                      |                                |                      |                                |                          |                                |                          |                                |                              | 12                           |      |      |      |    |
|                               |                      |                                |                      |                                |                      |                                |                          |                                |                          |                                |                              | 14                           |      |      |      |    |
| 00                            | 73                   | 57000                          | 57000                |                                |                      |                                |                          |                                |                          |                                |                              | 16                           |      |      |      |    |
| 00                            | 78                   | 53000                          | 53000                | 80                             | 46000                | 48000                          |                          |                                |                          |                                |                              | 18                           |      |      |      |    |
| 00                            | 77                   | 50000                          | 50000                | 79                             | 44000                | 44000                          | 80                       | 30000                          | 30000                    |                                |                              | 20                           |      |      |      |    |
| 00                            | 73                   | 41000                          | 41000                | 76                             | 37000                | 37000                          | 78                       | 27000                          | 27000                    | 80                             | 18000                        | 18000                        | 25   |      |      |    |
| 00                            | 70                   | 32900                          | 34900                | 73                             | 32000                | 32000                          | 75                       | 25000                          | 25000                    | 78                             | 14000                        | 14000                        | 30   |      |      |    |
| 00                            | 66                   | 24100                          | 26400                | 70                             | 24100                | 26400                          | 73                       | 22000                          | 22000                    | 76                             | 12000                        | 12000                        | 35   |      |      |    |
| 00                            | 62                   | 18200                          | 20700                | 67                             | 18200                | 20700                          | 70                       | 18200                          | 19000                    | 74                             | 11000                        | 11000                        | 40   |      |      |    |
| 00                            | 58                   | 14400                          | 16700                | 63                             | 14400                | 16700                          | 67                       | 14400                          | 16700                    | 72                             | 10000                        | 10000                        | 45   |      |      |    |
| 00                            | 54                   | 11500                          | 13500                | 60                             | 11500                | 13500                          | 64                       | 11500                          | 13500                    | 69                             | 9200                         | 9200                         | 50   |      |      |    |
| 00                            | 45                   | 7300                           | 8600                 | 53                             | 7300                 | 8600                           | 58                       | 7300                           | 8600                     | 65                             | 8000                         | 8000                         | 60   |      |      |    |
| 00                            | 34                   | 4200                           | 5700                 | 45                             | 4200                 | 5700                           | 52                       | 4200                           | 5700                     | 60                             | 7000                         | 7000                         | 70   |      |      |    |
|                               | 18                   | 2400                           | 3600                 | 36                             | 2400                 | 3600                           | 45                       | 2400                           | 3600                     | 55                             | 5000                         | 6000                         | 80   |      |      |    |
|                               |                      |                                |                      | 23                             | ---                  | 2000                           | 36                       | 2000                           | 800                      | 49                             | 3500                         | 4900                         | 54   | 3300 | 4300 | 90 |
|                               |                      |                                |                      |                                |                      |                                | 26                       | 800                            | 43                       | 2200                           | 3200                         | 49                           | 1900 | 2900 | 100  |    |
|                               |                      |                                |                      |                                |                      |                                |                          |                                | 36                       | ---                            | 2200                         | 44                           | 1800 | 109  |      |    |
|                               |                      |                                |                      |                                |                      |                                |                          |                                | 26                       | ---                            | 900                          | 36                           | 800  | 120  |      |    |

329377

WARNING: DO NOT EXCEED 90 FOOT RADIUS OVER SIDE WITH HOOK BLOCK ON A FULLY EXTENDED BOOM OR A TIPPING CONDITION WILL OCCUR.

WARNING: DO NOT EXCEED 105 FOOT RADIUS OVER SIDE (WITH OR WITHOUT HOOK BLOCK) OR A TIPPING CONDITION WILL OCCUR.

WARNING: WHEN LIFTING A LOAD, ALL POWERED SECTIONS OF THE BOOM MUST BE EXTENDED EQUALLY.

|         |        |
|---------|--------|
| CREEP   | 2% MPH |
| 100 PSI | 50 PSI |
| 75 PSI  | 65 PSI |

NOTE: OPERATION OF THIS EQUIPMENT IN EXCESS OF LOAD RATINGS AND DISREGARD OF INSTRUCTIONS VOIDS THE WARRANTY.

EXCEED 90 RADIUS OR A TIPPING CONDITION WILL

OCUR WITHOUT OUTRIGGERS DEPEND ON TIRE AND CONDITION INFLATED PER TABLE AND WHEN REAR AXLE LOCKOUTS ARE ENGAGED OF OPERATION PLATE FOR WORKING RANGES EXCEED 90 RADIUS OR A TIPPING CONDITION WILL

NOTE: WITHOUT OUTRIGGERS DEPEND ON TIRE AND CONDITION INFLATED PER TABLE, AND WHEN REAR AXLE LOCKOUTS ARE ENGAGED. OF OPERATION PLATE FOR WORKING RANGES NOT EXCEEDING 1 MPH ABOVE THE HEAVY LINE ARE BASED ON STRUCTURE AND NOT ON MACHINE STABILITY

TO HELP PREVENT TIPPING CONDITIONS WHEN "LIFTING ON RUBBER" IT IS RECOMMENDED THAT -  
1. MINIMUM BOOM LENGTHS BE USED, NOT EXCEEDING 75 FEET.  
2. OUTRIGGERS BE EXTENDED AS FAR AS POSSIBLE AND CLEAR OF GROUND

WARNING: WITHOUT OUTRIGGER LIFTS WITH JIB OR BOOM EXTENSION IN WORKING POSITION ARE PROHIBITED

WARNING: WHEN TRANSPORTING A LOAD, MACHINE MUST BE ON FIRM, LEVEL SURFACE WITH LOAD RESTRAINED FROM SWINGING DO NOT EXCEED 2% MPH (4 KMPH) VEHICLE SPEED.



## deductions to be made from rated loads

| DEDUCTIONS TO BE MADE FROM<br>MAIN BOOM RATED LOADS (IN POUNDS)  |            |     |                            |                            |       |       |           |       |       |
|--|------------|-----|----------------------------|----------------------------|-------|-------|-----------|-------|-------|
| HOOK<br>BLOCK  | ON<br>BOOM |     | ON<br>LATTICE<br>EXTENSION | ON JIB                     |       |       |           |       |       |
|  |            |     |                            | 15 FT.                     | 25 FT | 35 FT | 15 FT     | 25 FT | 35 FT |
| 66 Ton<br>5 Sheave   | 1200       |     | —                          | —                          | —     | —     | —         | —     | —     |
| 20 Ton<br>1 Sheave   | 600        |     | 3500                       | —                          | —     | —     | —         | —     | —     |
| 8.5 Ton<br>Ball Hook   | 300        |     | 2700                       | 4500                       | 5200  | 6900  | —         | —     | —     |
| DEDUCTIONS TO BE MADE FROM<br>LATTICE EXTENSION RATED LOADS (IN POUNDS)  |            |     |                            |                            |       |       |           |       |       |
| HOOK<br>BLOCK  | ON<br>BOOM |     | ON<br>LATTICE<br>EXTENSION | ON JIB                     |       |       |           |       |       |
|  |            |     |                            | 15 FT                      | 25 FT | 35 FT | 15 FT     | 25 FT | 35 FT |
| 66 Ton   | 1200       |     | —                          | —                          | —     | —     | —         | —     | —     |
| 20 Ton   | 600        |     | 600                        | —                          | —     | —     | —         | —     | —     |
| 8.5 Ton  | 300        |     | 300                        | 1400                       | 1700  | 2000  | —         | —     | —     |
| DEDUCTIONS TO BE MADE FROM<br>JIB RATED LOADS (IN POUNDS)  |            |     |                            |                            |       |       |           |       |       |
| HOOK<br>BLOCK  | ON<br>BOOM |     |                            | ON<br>LATTICE<br>EXTENSION |       |       | ON<br>JIB |       |       |
|  |            |     |                            |                            |       |       |           |       |       |
|  | 15         | 15  | 35                         | 15                         | 25    | 35    | 15        | 25    | 35    |
| 66 Ton   | 800        | 750 | 700                        | —                          | —     | —     | —         | —     | —     |
| 20 Ton   | 500        | 450 | 400                        | 650                        | 600   | 550   | —         | —     | —     |
| 8.5 Ton  | 300        | 250 | 200                        | 350                        | 300   | 250   | 300       | 300   | 300   |
| DEDUCTIONS FOR OPTIONAL EQUIPMENT  |            |     |                            |                            |       |       |           |       |       |
| FOR MACHINES EQUIPPED WITH AN AUXILIARY SHEAVE OR AN ELECTRICAL ANTI-TWO BLOCK, OR A LOAD MOMENT DEVICE. 300 LBS MUST BE DEDUCTED FROM ALL STABILITY RATINGS BELOW THE HEAVY LINE. |            |     |                            |                            |       |       |           |       |       |



## PCSA CLASS 10—182 four section full rated crane loads in pounds — main boom in 360° and over

| LOAD RADIUS<br>IN FEET | POWERED BOOM LENGTH IN FEET  |                   |                      |                   |                      |                   |                      |                   |                      |                   |                            |                   |                      |                   |
|------------------------|--|-------------------|----------------------|-------------------|----------------------|-------------------|----------------------|-------------------|----------------------|-------------------|----------------------------|-------------------|----------------------|-------------------|
|                        |  |                   |                      |                   |                      |                   |                      |                   |                      |                   | ALL THREE POWERED SECTIONS |                   |                      |                   |
|                        | 36   |                   | 42                   |                   | 49                   |                   | 62                   |                   | 75                   |                   |                            |                   |                      |                   |
|                        | LOADED BOOM ANGLE Δ°   | RATED LOAD POUNDS | LOADED BOOM ANGLE Δ° | RATED LOAD POUNDS | LOADED BOOM ANGLE Δ° | RATED LOAD POUNDS | LOADED BOOM ANGLE Δ° | RATED LOAD POUNDS | LOADED BOOM ANGLE Δ° | RATED LOAD POUNDS | LOADED BOOM ANGLE Δ°       | RATED LOAD POUNDS | LOADED BOOM ANGLE Δ° | RATED LOAD POUNDS |
|                        | 360°   | Front             | 360°                 | Front             | 360°                 | Front             | 360°                 | Front             | 360°                 | Front             | 360°                       | Front             | 360°                 | Front             |
| 10                     | 70   | 120000            | 120000               | 73                | 97000                | 97000             | 76                   | 92000             | 92000                | 79                | 86000                      | 86000             |                      |                   |
| 12                     | 66   | 105000            | 105000               | 70                | 90000                | 90000             | 73                   | 86000             | 86000                | 77                | 81000                      | 81000             | 80                   | 77000             |
| 14                     | 63   | 93000             | 93000                | 67                | 83000                | 83000             | 71                   | 80000             | 80000                | 75                | 76000                      | 76000             | 78                   | 73000             |
| 16                     | 59   | 80000             | 80000                | 64                | 76000                | 76000             | 68                   | 74000             | 74000                | 73                | 71000                      | 71000             | 77                   | 68000             |
| 18                     | 55   | 70000             | 70000                | 61                | 69000                | 69000             | 65                   | 68000             | 68000                | 71                | 67000                      | 67000             | 75                   | 64000             |
| 20                     | 50   | 62000             | 62000                | 57                | 61000                | 61000             | 63                   | 60000             | 60000                | 69                | 59000                      | 59000             | 74                   | 58000             |
| 25                     | 38   | 47000             | 47000                | 48                | 46000                | 46000             | 56                   | 45000             | 45000                | 64                | 44000                      | 44000             | 69                   | 43000             |
| 30                     | 18   | 32900             | 34900                | 37                | 32900                | 34900             | 48                   | 32900             | 34900                | 59                | 32900                      | 34900             | 65                   | 32900             |
| 35                     | CAUTION: FOR 38 FOOT BOOM LENGTH RATED LOADS TELESCOPE CYLINDERS MUST BE FULLY RETRACTED AND AGAINST STOPS |                   |                      | 22                | 24100                | 26400             | 39                   | 24100             | 26400                | 53                | 24100                      | 26400             | 61                   | 24100             |
| 40                     |  |                   |                      |                   |                      |                   | 27                   | 18200             | 20700                | 46                | 18200                      | 20700             | 56                   | 18200             |
| 45                     |  |                   |                      |                   |                      |                   |                      |                   |                      | 39                | 14400                      | 16700             | 51                   | 14400             |
| 50                     |  |                   |                      |                   |                      |                   |                      |                   |                      | 30                | 11500                      | 13500             | 46                   | 11500             |
|                        |  |                   |                      |                   |                      |                   |                      |                   |                      |                   |                            |                   | 33                   | 7300              |
|                        |  |                   |                      |                   |                      |                   |                      |                   |                      |                   |                            |                   | 2                    | 4200              |

**WARNING**

1 FOR BOOM LENGTHS LESS THAN 134 FEET AND LESS THAN 147 FEET, THE 33 FOOT BOOM EXTENSION RATED LOADS ARE DETERMINED BY BOOM ANGLE ONLY IN THE COLUMN HEADED BY 134 FOOT BOOM AND 147 FOOT BOOM RESPECTIVELY. FOR ANGLES NOT SHOWN, USE RATING OF NEXT LOWER BOOM ANGLE.

WARNING: MAIN BOOM RATINGS MUST BE REDUCED FOR FIXED BOOM ATTACHMENTS SEE TABLE

on rubber . . . . with 9,000 lbs. counterweight  
rated crane loads in pounds — main boom — without outrigger

| RATINGS FOR 29.5 x 25 — 22 PLY TIRES |                      |             | LOAD RADIUS IN FEET | RATINGS FOR 29.5 x 25 — 28 PLY TIRES |                      |             |
|--------------------------------------|----------------------|-------------|---------------------|--------------------------------------|----------------------|-------------|
| STATIONARY 360° Ⓞ                    | OVER FRONT           |             |                     | STATIONARY 360° Ⓞ                    | OVER FRONT           |             |
|                                      | STATIONARY & CREEP Ⓞ | 2 1/2 MPH Ⓞ |                     |                                      | STATIONARY & CREEP Ⓞ | 2 1/2 MPH Ⓞ |
| 39950                                | 61300                | 44750       | 10                  | 44700                                | 72000                | 56300       |
| 30700                                | 53500                | 37950       | 12                  | 35750                                | 63200                | 48150       |
| 22950                                | 44700                | 30350       | 15                  | 24550                                | 53200                | 38950       |
| 14000                                | 34450                | 21700       | 20                  | 14000                                | 40550                | 28550       |
| 8400                                 | 26550                | 15850       | 25                  | 8400                                 | 26550                | 21800       |
| 4850                                 | 18250                | 11650       | 30                  | 4850                                 | 18250                | 16500       |
| 2850                                 | 13450                | 8950        | 35                  | 2850                                 | 13450                | 13200       |
| 1450                                 | 10200                | 6900        | 40                  | 1450                                 | 10200                | 10200       |
|                                      | 8050                 | 5400        | 45                  |                                      | 8050                 | 8050        |
|                                      | 6000                 | 3800        | 50                  |                                      | 6000                 | 6000        |
|                                      | 3350                 | 1800        | 60                  |                                      | 3350                 | 3350        |





and set

work areas

|    |                   |       |                      |                   |       |                      |                   |       |                      | LATTICE EXTENSION WITH 101 FOOT BOOM |       |                      | LATTICE EXTENSION WITH 114 FOOT BOOM |       |                    |      |
|----|-------------------|-------|----------------------|-------------------|-------|----------------------|-------------------|-------|----------------------|--------------------------------------|-------|----------------------|--------------------------------------|-------|--------------------|------|
| 88 |                   | 101   |                      |                   | 114   |                      |                   | 134   |                      |                                      | 147   |                      |                                      |       |                    |      |
| D  | RATED LOAD POUNDS |       | LOADED BOOM ANGLE Δ° | RATED LOAD POUNDS |       | LOADED BOOM ANGLE Δ° | RATED LOAD POUNDS |       | LOADED BOOM ANGLE Δ° | RATED LOAD POUNDS                    |       | LOADED BOOM ANGLE Δ° | RATED LOAD POUNDS                    |       | LOAD RADIUS (FEET) |      |
|    | 380°              | FRONT |                      | 360°              | FRONT |                      | 360°              | FRONT |                      | 380°                                 | FRONT |                      | 380°                                 | FRONT |                    | 360° |
|    |                   |       |                      |                   |       |                      |                   |       |                      |                                      |       |                      |                                      |       | 10                 |      |
|    |                   |       |                      |                   |       |                      |                   |       |                      |                                      |       |                      |                                      |       | 12                 |      |
|    |                   |       |                      |                   |       |                      |                   |       |                      |                                      |       |                      |                                      |       | 15                 |      |
|    |                   |       |                      |                   |       |                      |                   |       |                      |                                      |       |                      |                                      |       | 20                 |      |
|    | 51000             | 51000 | 79                   | 47000             | 47000 | 80                   | 33000             | 33000 |                      |                                      |       |                      |                                      |       | 25                 |      |
|    | 43000             | 43000 | 76                   | 39000             | 39000 | 78                   | 29000             | 29000 | 80                   | 18000                                | 18000 |                      |                                      |       | 30                 |      |
|    | 36800             | 36800 | 73                   | 33200             | 33200 | 75                   | 25000             | 25000 | 78                   | 14000                                | 14000 | 79                   | 12000                                | 12000 | 35                 |      |
|    | 28300             | 31900 | 70                   | 28300             | 28600 | 73                   | 22000             | 22000 | 76                   | 12000                                | 12000 | 77                   | 11000                                | 11000 | 40                 |      |
|    | 22000             | 27600 | 67                   | 22000             | 24700 | 70                   | 19000             | 19000 | 74                   | 11000                                | 11000 | 75                   | 9700                                 | 9700  | 45                 |      |
|    | 17700             | 22200 | 64                   | 17700             | 22000 | 67                   | 16300             | 16300 | 71                   | 10000                                | 10000 | 73                   | 9200                                 | 9200  | 50                 |      |
|    | 14100             | 17800 | 60                   | 14100             | 17800 | 64                   | 14100             | 14400 | 69                   | 9200                                 | 9200  | 71                   | 8500                                 | 8500  | 55                 |      |
|    | 11300             | 14500 | 57                   | 11300             | 14500 | 61                   | 11300             | 13400 | 67                   | 8500                                 | 8500  | 69                   | 7900                                 | 7900  | 60                 |      |
|    | 9400              | 12200 | 53                   | 9400              | 12200 | 58                   | 9400              | 11600 | 64                   | 8000                                 | 8000  | 67                   | 7400                                 | 7400  | 65                 |      |
|    | 7600              | 10100 | 49                   | 7600              | 10100 | 55                   | 7600              | 10100 | 62                   | 7500                                 | 7500  | 65                   | 6900                                 | 6900  | 70                 |      |
|    | 6300              | 8600  | 45                   | 6300              | 8600  | 52                   | 6300              | 8600  | 59                   | 7000                                 | 7000  | 63                   | 6500                                 | 6500  | 75                 |      |
|    | 3900              | 5800  | 36                   | 3900              | 5800  | 45                   | 3900              | 5800  | 54                   | 6000                                 | 8000  | 58                   | 5800                                 | 5800  | 80                 |      |
|    |                   |       | 23                   | 2300              | 3900  | 36                   | 2300              | 3900  | 48                   | 4500                                 | 5500  | 53                   | 4300                                 | 4900  | 90                 |      |
|    |                   |       |                      |                   |       | 26                   | 1000              | 2400  | 42                   | 3100                                 | 4500  | 48                   | 2900                                 | 4100  | 100                |      |
|    |                   |       |                      |                   |       |                      |                   |       | 34                   | 2000                                 | 3200  | 42                   | 1800                                 | 3000  | 110                |      |
|    |                   |       |                      |                   |       |                      |                   |       | 24                   | —                                    | 2200  | 35                   | —                                    | 1900  | 120                |      |
|    |                   |       |                      |                   |       |                      |                   |       |                      |                                      |       | 27                   | —                                    | 1000  | 130                |      |

LOAD RADIUS BOOM AS

BOOM RATINGS MUST BE REDUCED BY WEIGHT OF BOOM ATTACHMENTS AND LOAD HANDLING DEVICES SEE TABLE

32R517

Minimum boom (75' maximum)

| RATINGS FOR MANUAL BOOM |                    |           |
|-------------------------|--------------------|-----------|
| STATIONARY 360°         | OVER FRONT         |           |
|                         | STATIONARY & CREEP | 2 1/2 MPH |
| 45100                   | 71700              | 55900     |
| 36300                   | 63100              | 47900     |
| 27200                   | 53300              | 38900     |
| 16700                   | 41100              | 28700     |
| 10400                   | 31500              | 21900     |
| 6400                    | 21600              | 17000     |
| 3800                    | 15800              | 13600     |
| 2000                    | 11900              | 10900     |
| —                       | 6900               | 6900      |
| —                       | 5100               | 5100      |
| —                       | 3800               | 3800      |

32U1782

LOAD RATINGS WITHOUT OUTRIGGERS DEPEND ON TIRE CAPACITY AND CONDITION INFLATED PER TABLE AND APPLY ONLY WHEN REAR AXLE LOCKOUTS ARE ENGAGED

| TIRE INFLATION |        |        |           |
|----------------|--------|--------|-----------|
| SIZE           | STAT   | CREEP  | 2 1/2 MPH |
| 29.5x25-28 PR  | 75 PSI | 75 PSI | 65 PSI    |

WHEN TRANSPORTING A LOAD MACHINE MUST BE ON FIRM LEVEL SURFACE WITH MECHANICAL HOUSELOCK ENGAGED AND LOAD CENTERED OVER FRONT OF MACHINE AND RESTRAINED FROM SWINGING DO NOT EXCEED 2 1/2 MPH (4 KMPH) VEHICLE SPEED

CREEP IS MOTION FOR LESS THAN 200 FT IN A 30 MIN PERIOD AND NOT EXCEEDING 1 MPH

RATINGS ABOVE THE HEAVY LINE ARE BASED ON STRUCTURAL COMPETENCE AND NOT ON MACHINE STABILITY

STABILITY RATINGS DO NOT EXCEED 85% OF TIPPING LOADS WITH AUXILIARY SHEAVE ON BOOM POINT AND STOWED BOOM EXTENSION

LOAD AT RADIUS SHOWN  
TIPPING WILL OCCUR



| MAXIMUM JIB LOAD RATINGS IN POUNDS |                    |      |      |      |
|------------------------------------|--------------------|------|------|------|
| MINIMUM BOOM ANGLE                 | JIB LENGTH IN FEET |      |      |      |
|                                    | 15                 | 25   | 35   |      |
| 0° OFFSET                          | 80°                | 9100 | 7500 | 5000 |
|                                    | 75°                | 7850 | 6500 | 4400 |
|                                    | 70°                | 6650 | 5500 | 3900 |
|                                    | 65°                | 5500 | 4500 | 3200 |
|                                    | 60°                | 4550 | 3700 | 2600 |
|                                    | 55°                | 3400 | 2900 | 2000 |
| 12.5° OFFSET                       | 80°                | 8100 | 6200 | 4500 |
|                                    | 75°                | 7050 | 5500 | 3600 |
|                                    | 70°                | 5700 | 4500 | 3000 |
|                                    | 65°                | 4700 | 3700 | 2450 |
|                                    | 60°                | 3950 | 3100 | 2000 |
|                                    | 55°                | 3200 | 2500 | 1500 |
| 25° OFFSET                         | 80°                | 7300 | 5400 | 4000 |
|                                    | 75°                | 5950 | 4500 | 3200 |
|                                    | 70°                | 4700 | 3600 | 2500 |
|                                    | 65°                | 3800 | 2900 | 2000 |
|                                    | 60°                | 3250 | 2500 | 1500 |
|                                    | 55°                | 2850 | 2200 | 1000 |

## Jib ratings

### JIB CAPACITY NOTES:

- 1 MAXIMUM JIB LOAD RATINGS ARE BASED ON STRUCTURAL COMPETENCE AND DO NOT EXCEED 85% OF TIPPING LOAD WITH FULLY EXTENDED OUTRIGGERS USE OF OUTRIGGERS IS REQUIRED WHEN BOOM IS EQUIPPED WITH JIB
- 2 FOR BUCKET RATINGS ON JIB DEDUCT 20% FROM MAXIMUM JIB LOAD RATINGS
- 3 WARNING: DO NOT LIFT WITH JIB AT BOOM ANGLES BELOW 55° LOSS OF STABILITY OCCURS RAPIDLY
- 4 WARNING: DO NOT EXCEED 120 FOOT LOAD RADIUS WITH ERRECTED 15 25 OR 35 FOOT JIB OR A TIPPING CONDITION WILL OCCUR

| HOIST LINE WIRE ROPE |                 |                                 |
|----------------------|-----------------|---------------------------------|
| TYPE                 | ¾ - 8 x 19 IWRC | P&H TYPE 25<br>¾ - 6 x 25F IWRC |
| BREAKING STRENGTH    | 51 800          | 58 800                          |
| PERMISSIBLE STRENGTH | 14 800          | 16,800                          |

| PERMISSIBLE HOIST LINE LOAD IN POUNDS |                                   |
|---------------------------------------|-----------------------------------|
| PARTS OF LINE                         | P & H #18 MAIN OR AUXILIARY WINCH |
| 1                                     | 12,000                            |
| 2                                     | 24,000                            |
| 3                                     | 36,000                            |
| 4                                     | 48,000                            |
| 5                                     | 60,000                            |
| 6                                     | 72,000                            |
| 7                                     | 84,000                            |
| 8                                     | 96,000                            |
| 9                                     | 108,000                           |
| 10                                    | 120,000                           |
| 11                                    | 132,000                           |

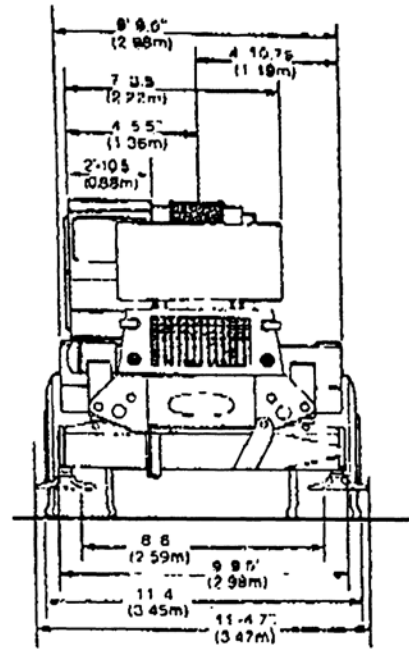


**VEHICLE WEIGHTS:** Include standard engine, standard manual boom (forward in travel position) standard main winch and optional auxiliary winch. 690' (210 m) of 3/4" (19 mm) cable on main winch and 500' (152 m) of 3/4" (19 mm) cable on auxiliary winch. standard tires 100 gals. fuel but less counterweight.

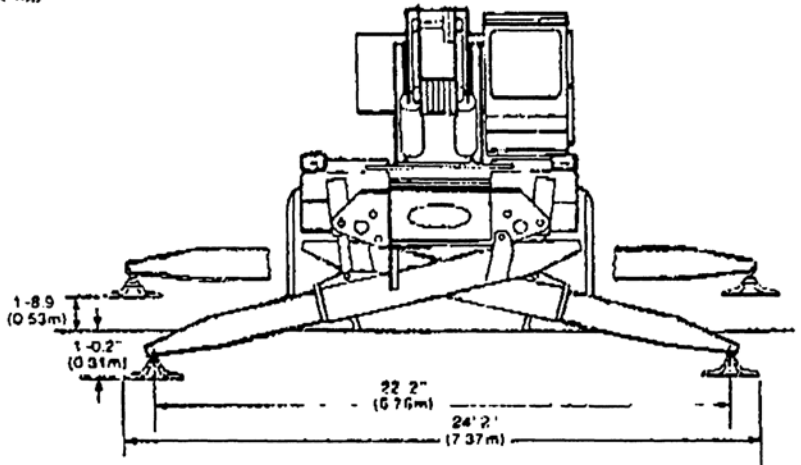
| G V W                 | Front Axle              | Rear Axle               |
|-----------------------|-------------------------|-------------------------|
| 85 015<br>(38 555 kg) | + 52 006<br>(23 585 kg) | + 33 009<br>(14 970 kg) |

Effect on axle loads by adding these items:

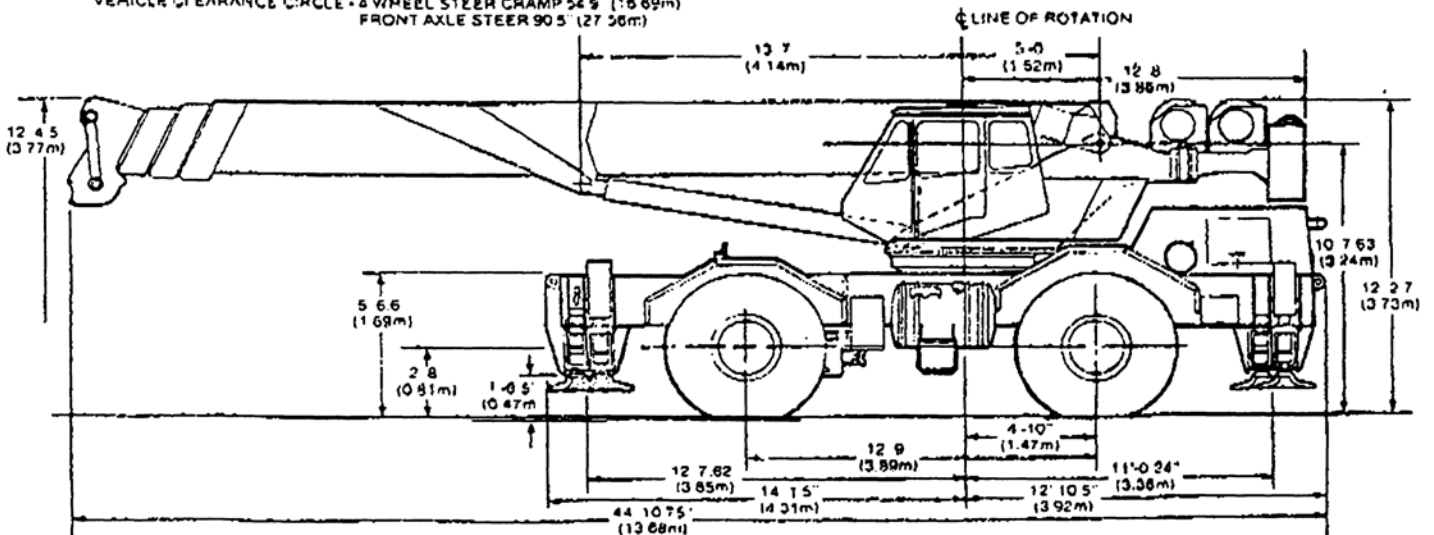
|  |                   |                      |                       |
|--|-------------------|----------------------|-----------------------|
| 9000 lb counterweight (stg.)                     | 9010<br>(4086 kg) | -- 4752<br>(2155 kg) | + 13 762<br>(6241 kg) |
| 55 ton hook block (stowed midship)               | 1200<br>(544 kg)  | + 1239<br>(562 kg)   | + 39<br>(18 kg)       |
| Full powered boom (incl. cylinder and hose loop) | 2224<br>(1009 kg) | + 2704<br>(1226 kg)  | -- 480<br>(217 kg)    |
| Boom extension (stored)                          | 1110<br>(503 kg)  | + 1683<br>(763 kg)   | -- 573<br>(260 kg)    |
| 20 ton hook block (stowed midship)               | 600<br>(272 kg)   | + 620<br>(281 kg)    | -- 20<br>(9 kg)       |
| 8.5 ton weighted hook (stowed midship)           | 300<br>(136 kg)   | + 310<br>(141 kg)    | -- 10<br>(5 kg)       |
| Auxiliary sheave                                 | 150<br>(68 kg)    | + 438<br>(199 kg)    | -- 288<br>(131 kg)    |



## general dimensions



VEHICLE TURNING CIRCLE - 4 WHEEL STEER CRAMP 47.5 (14.45m)  
FRONT AXLE STEER 85.6 (26.05m)  
VEHICLE CLEARANCE CIRCLE - 4 WHEEL STEER CRAMP 54.9 (16.69m)  
FRONT AXLE STEER 90.5 (27.56m)



DRAWING NO 105J1277