



P&H CENTURY 165

65-ton Rough Terrain Crane 186-ft. (56.7m) maximum boom

specifications

ATTACHMENTS:



BOOMS

BOOM (4 SECTION) (STANDARD): 40 ft. (12.2 m) retracted to 126 ft. (38.4 m) extended length, four section boom consisting of a boom base, two hydraulically extended and retracted sections and a fourth manual section which can be hydraulically extended and retracted with pinning by hydraulic cylinders remotely controlled from the operator's cab. Boom point sheaves are five 17.362" (441 mm) dia. main sheaves with roller bearings and idler sheaves with bronze bearings.

BOOM (3 SECTION) (OPTIONAL): 39 ft. (11.9 m) retracted to 96 ft. (29.4 m) extended length, three section boom consisting of a boom base, two hydraulically extended and retracted sections. Boom point sheaves are five main 17.362" (441 mm) dia. sheaves with roller bearings and idler sheaves with bronze bearings.

EXTENSION (OPTIONAL): 39 ft. (11.9 m) swing around lattice structure boom extension with a single metallic sheave. It can be put into operating condition by pivoting from its stored position on right side of the boom base section and is pinned to the boom head. In the operation position, the extension is offset 2° from the main boom.

TELESCOPIC BOOM EXTENSION (OPTIONAL): 40 ft. (12.2 m) to 60 ft. (18.3 m) swing around lattice structure boom extension with a welded four plate telescope section with a single metallic sheave. It can be put into operating condition by pivoting from its stored position on the right side of the boom base section and pinned to the boom head. Telescopic section is then extended using the winch and pinned into position. In the operation position, the extension is offset 2° from the main boom.

EXTENSION OFFSET MECHANISM (OPTIONAL): Pivoting links which allow either boom extension above to be offset to 17° or 30° from the main boom.

AUXILIARY SHEAVE (OPTIONAL): Boom point mounted with single metallic sheave. Usable with any extension configuration.

HOOK BLOCKS (OPTIONAL):

- A) 66 Ton — 5 sheaves with swivel hook and safety latch, for 3/4" (19 mm) wire rope.
- B) 20 Ton — 1 sheave with swivel hook and safety latch, for 3/4" (19 mm) wire rope.
- C) 15 Ton — weighted hook with swivel and safety latch, for 3/4" (19 mm) wire rope.
- D) 8.5 Ton — weighted hook with swivel and safety latch, for 3/4" (19 mm) wire rope.

COUNTERWEIGHTS:

11,930 lbs. (5410 kg.) with 3 section boom.
13,230 lbs. (6000 kg.) with 4 section boom.
1,067 lbs. (484 kg.) auxiliary counterweight to be used on units without an auxiliary winch.



OPERATOR'S CAB STANDARD EQUIPMENT:

All roading and crane function controls. Front control console includes: engine water temperature gauge, engine oil pressure gauge, fuel gauge, volt meter, transmission temperature gauge, transmission clutch pressure gauge, hydraulic oil temperature gauge, air pressure gauge, hourmeter, winch high speed indicators, anti-two-block warning, boom angle indicator, boom length and radius indicator, dash light and machine level. Deluxe operator's seat with torsion suspension and vinyl covering, seat belt and fire extinguisher, main winch drum turn indicator and rear steer centering light.

OPERATOR'S CAB OPTIONAL EQUIPMENT: Auxiliary winch drum turn indicator, diesel or propane heater, front window fan, windshield wiper, windshield washer, roof window wiper, rotary roof beacon, tachometer and Lexan windows, rear axle lockout override control and cab air conditioning. Control switches and indicators for automatic pinning system for four section boom.

MISCELLANEOUS UPPER OPTIONS: Load indicating device, floodlights, 360 degree swing lock, winch spooling roller, anti-two-block and load moment shutdown device.



CONTROLS: 15.7 inch (400 mm) diameter steering wheel with warning horn, front console mounted hand control levers for swing, telescope, independent auxiliary winch (optional), auxiliary winch (optional), main winch and boom hoist. Front floor mounted foot pedals for swing brake, boom hoist, service brakes and engine throttle. Front console instrument panel contains ignition and engine "start" and "stop" switch, independent rear steer control switch. Side console has hand throttle control, swing lock control and electrical outrigger panel, transmission control lever, transmission high-low range switch, park brake switch, steering mode selector switch, travel stabilizer switch all standard.



MAIN WINCH (STANDARD): P&H Model 2081 with two speed motor, mounted on rear of the revolving frame. Planetary gearing and equal speed power raising and lowering. Infinitely variable speed control. Spring applied hydraulically released load holding multi-disc brake is standard.

Drum: 16.614 inch (422 mm) pitch diameter, 22.81 inch (579 mm) wide, 27.75 inch (705 mm) flange diameter.
Cable: .75 inch (19 mm) diameter, 6 x 25 extra improved plow steel. Strength limit 16,800 lbs. (7,519 kg.)
Drum Capacity: 778 ft. (237 m) 5 layers.
Line Pull Maximum: 22,853 lbs. (10,367 kg.) 1st layer, low speed, 17,176 lbs. (7,790 kg) 5th layer.
Maximum Available Line Pull for starting load mid-air, 5th layer: 15,000 lbs. (6,802 kg.)
Line Speed Maximum (At Engine No Load High Speed): 462 ft./min. (141 meter/min.) 5th layer, high speed.


AUXILIARY WINCH (OPTIONAL): P&H Model 1581 with two speed motor, mounted to rear of revolving frame on the counter-weight. Planetary gearing and equal speed, power raising and lowering. Infinitely variable speed control. Spring applied hydraulically released load holding multi-disc brake is automatic.


Drum: 14.25 inch (362 mm) pitch diameter, 18.5 inch (470 mm) wide, 22.52 inch (572 mm) flange diameter.
Cable (Optional): .75 inch (19 mm) diameter, 6 x 25 extra improved plow steel. Strength limit 16,800 lbs. (7,619 kg.)
Cable (Optional): .75 inch (19 mm) diameter, 8 x 25 spin resistance, extra improved plow steel, 7 x 7 x 1 WRC. Strength limit 10,360 lbs. (4,698 kg.)
Line Pull Maximum: 1581 aux: 18,282 lbs. (8,291 kg.) 1st layer, low speed, 13,223 lbs. (5,997 kg) 5th layer.
1581 independent aux: 16,157 lbs. (7329 kg.) 1st layer, low speed.
Maximum Available Line Pull for starting load mid-air, 5th layer: 11,000 lbs. (4,991 kg.)
Line Speed Maximum (At Engine No Load High Speed):
1581 aux: 621 ft./min. (189 meter/min.) 5th layer, high speed.
1581 independent aux: 285 ft./min. (87 meter/min.) 5th layer, high speed.



SHEAVE AND DRUM TO WIRE ROPE RATIOS (FT/CH DIAMETER)

	Sheave to Wire Rope	Drum to Wire Rope
Main Boom Sheaves .75" Wire Rope	24.15:1	— —
Winch .75" Wire Rope	— —	23.15:1
Aux. Winch .75 Wire Rope	— —	20.0:1

 **BOOM HOIST:** Two 8.268" (210 mm) I.D. cylinders, double-acting. Hydraulically powered raising and lowering with holding valve.

 **BOOM TELESCOPE:** Two 6.5" (165 mm) I.D. cylinders — double-acting. Hydraulically powered raising and lowering with holding valve. Supplied by a single hose loop.

HYDRAULIC SYSTEM

PUMP DRIVE: Gear driven integral with transmission off rear of torque converter housing. Left hand pump drive with SAE "C" 2 and 1 bolt mounting flange and SAE "C" spline for swing and winch boost/steering/outriggers tandem gear pump. Right hand pump drive with SAE "B" 2 bolt mounting flange and SAE "B-B" spline for winch and boom hoist/telescope tandem gear pump. The left hand SAE "C" mounting is equipped with a manual disconnect. Both pump drives have 0.948 pump speed to 1.0 engine speed drive ratio.

PUMPS: One tandem gear pump operating at full load rpm, the cover end section provides 47.3 gpm (179 liter/min.) to the boom hoist and telescope circuits, the shaft end section provides 36.7 gpm (139 liter/min.) to the main and auxiliary winch circuits. One tandem gear pump operating at full load rpm, the cover end section provides 31.7 gpm (120 liter/min.) to the swing circuit, the shaft end section provides 31.7 gpm (120 liter/min.) to the outrigger and steer circuits or winch boost.

OIL RESERVOIR: 177.0 gallons (670 liter) mounted between the rear of the left side of the carrier frame.

OIL COOLER: Oil to air, tube and fin type with internal turbulators.

CONTROL VALVES (STANDARD): One single spool valve for swing circuit.


One two spool valve with one spool for boom hoist and one spool for telescope circuits.

One single spool valve for main winch circuit.

CONTROL VALVES (OPTIONAL): One two spool valve with one spool for main winch and one spool for auxiliary winch circuits.

CONTROL VALVES (OPTIONAL): One three spool valves with one spool for main winch, one spool for auxiliary winch and one spool for independent auxiliary winch.

FILTERS: Two return line filters, 7 micron nominal, internally mounted to the hydraulic reservoir.

 **SWING UNIT:** Hydraulic motor driving through gear reducer to pinion gear. Drive pinion supported with outboard bearing housing. 360° continuous rotation to 2.1 RPM full load.

SWING GEAR: Single shear ball swing bearing with internal spur gear.

SWING BRAKE: Spring applied, hydraulically released, wet disc brake, integral with swing reducer. Hand brake control lever mounted on side console. A manual foot pedal applies brake for static holding.

HOUSE LOCK: One position (front) pin-in hole lock manually engaged with house lock lever in cab is standard. A positive 360° position lock is optional.

ELECTRICAL: Electrical system is 24 volt negative ground. Wiring harnesses have protective covering made of braided nylon and are independently clamped to framework. Wire harnesses have environmentally sealed Deutsch connectors. Switches used in operator's cab are environmentally sealed. Toggle type.



TYPE: P&H 4 x 4 x 4, 11 ft. (3.37 meter) wide.

WEIGHT: Including roller bearing swing circle, hydraulic outriggers and standard tires (29.5 x 25 E-3) and Caterpillar engine 46,010 lbs. (20,870 kg.).

FRAME: Rectangular frame members of 100,000 psi (70 kg/mm²) and 80,000 psi (56 kg/mm²) yield strength alloy steels reinforced with box constructed crossmembers of 80,000 psi (56 kg/mm²) yield strength steel.



OUTRIGGERS: Hydraulic out and down type. Eight double acting hydraulic cylinders for independent horizontal and vertical motion of each beam operated from the operators cab. Each vertical cylinder is equipped with a holding valve.

OUTRIGGER BEAMS: 80,000 psi (56 kg/mm²) yield strength alloy steel box extending to a maximum spread of 23' 7" (7.2 meter) from centerline of float to centerline float with the machine fully raised on the outriggers. Retracted width of the outriggers without floats is 10' 6" (3.2M).

OUTRIGGERS FLOATS: Individually removable floats with storage on carrier. Float size 24" (610 mm) dia. with effective nominal surface area of 452 sq. in. (2920 cm²) per float.

**TRANSMISSION:**

TYPE: Power shift with high/low range with torque converter.

GEARS: 6 speed forward and 3 speed reverse.

GEAR SELECTION: Electrically controlled and operated.

RANGE SELECTION: Electrically controlled and pneumatically operated.

REAR AXLE DISCONNECT: 2 wheel drive/4 wheel drive. Electrically controlled and pneumatically operated.

RADIATOR: Water to air, tube and fin type core with bottom tank transmission oil cooler. Thermostatic temperature controlled.

AIR CLEANER: Donaldson "FHG16-0049" two-stage primary dry air cleaner with "Duralife" filter media restriction indicator.

MUFFLER: "Silent Partner" muffler.

ELECTRICAL: 24 volt system with negative ground. Two kinds of batteries are selective (1) Two 8D batteries with a reserve capacity of 442 min. and CCA at 0°F of 970 amps. (2) Two 4D batteries with reserve capacity of 308 min. and CCA at 0°F of 791 amps. Harnesses have environmentally sealed Deutsch connectors. 24 volt starting system.

FUEL TANK: One steel tank, 79 gal. (300 liter), mounted on right side of carrier between the tires.

FRONT AXLE: Planetary drive and steer axle. 26.325:1 total reduction.

REAR AXLE: Planetary drive and steer axle. 26:325:1 total reduction. No-spin differential is optional.

SERVICE BRAKES: Air over hydraulic brakes on all four wheels. Disc type. Two caliper for each wheel.

PARKING BRAKES: Maxi spring set air chamber on 13.11 inch x 2.95 inch (333 mm dia. x 75 mm wide) drum and shoe on input yoke of rear axle. Spring applied and air released for safety.

SUSPENSION: Rigid mounted front axle. Rear axle is pivot mounted with automatic hydraulic lockout cylinders. Total oscillation of 10.4 inch (265 mm) is attainable.



STEERING: Hydrostatic type pressure compensated system fully controlled by a steering wheel with two hydraulic power assist cylinders on each axle.

STEERING MODES: Front steer only, crab steer and four wheel steer and independent rear steer are standard. Activation of the different steering modes is by electrical switch on the side control console; except independent rear steer, which is controlled by toggle switch on the front console.

TIRES: Optional 26.5 x 25-26 PR tubeless rock tread (E3). Standard 29.5 x 25-28 PR tubeless rock tread (E3).

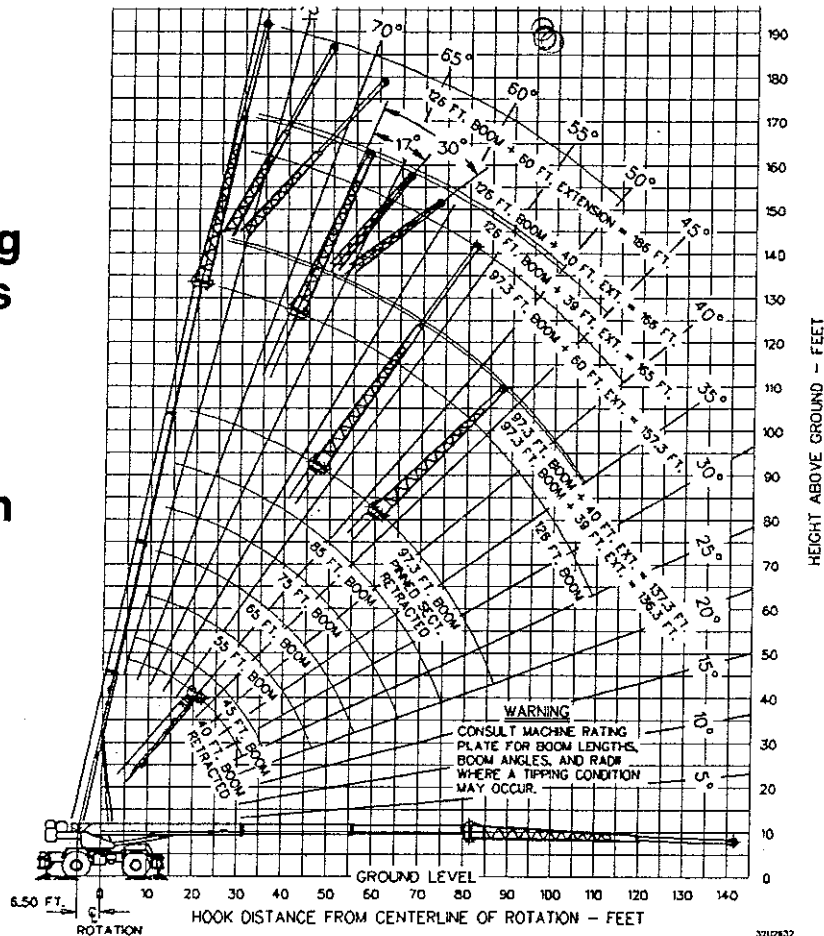
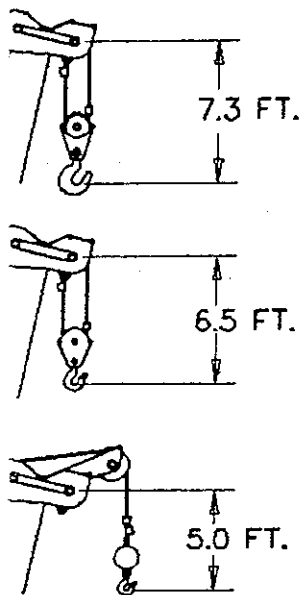
LOWER STANDARD EQUIPMENT: Sliding engine hood, fenders with side storage compartments, tool box, tow lugs, hydraulic pump disconnect, automatic moisture ejector for air system, rear axle disconnect, oil to water transmission cooler and oil to air hydraulic oil cooler, back-up alarm and highway lights.

LOWER OPTIONAL EQUIPMENT: Rear view mirrors, starting aid, front and rear pintle hooks, alcohol evaporator installation, air dryer installation, tire inflation kit, oscillating axle lockout override.



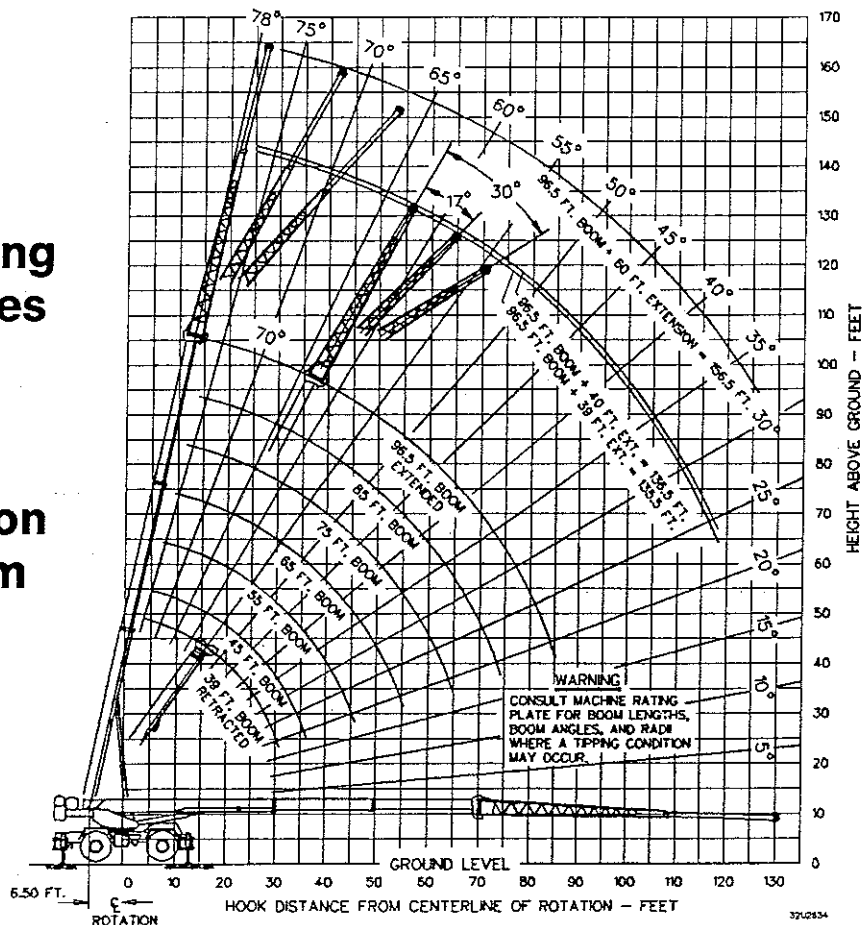
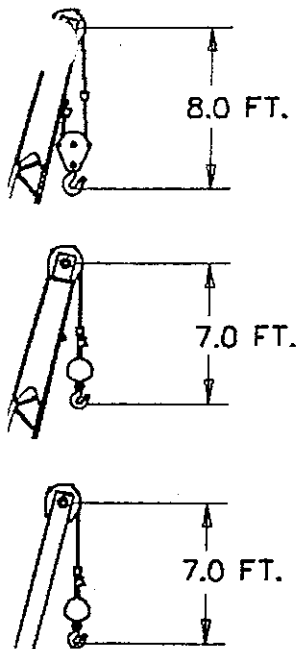
Working Ranges

4 Section Boom



Working Ranges

3 Section Boom





LOAD RATINGS — 4 Section Boom

PCSA Class 10-278

RATED LOAD IN POUNDS ON OUTRIGGERS

POWERED BOOM LENGTH IN FEET — MANUAL RETRACTED

OPERATING RADIUS IN FEET	40 FT.		45 FT.		55 FT.		65 FT.		75 FT.		85 FT.		97.3 FT.	
	LOADED BOOM ANGLE	RATED LOAD IN POUNDS	LOADED BOOM ANGLE	RATED LOAD IN POUNDS	LOADED BOOM ANGLE	RATED LOAD IN POUNDS	LOADED BOOM ANGLE	RATED LOAD IN POUNDS	LOADED BOOM ANGLE	RATED LOAD IN POUNDS	LOADED BOOM ANGLE	RATED LOAD IN POUNDS	LOADED BOOM ANGLE	RATED LOAD IN POUNDS
10	360°	68	360°	70	360°	74	360°	75	360°	75	360°	75	360°	75
12	360°	65	360°	68	360°	72	360°	73	360°	73	360°	73	360°	73
15	360°	60	360°	63	360°	69	360°	73	360°	73	360°	73	360°	73
20	360°	51	360°	56	360°	63	360°	68	360°	71	360°	74	360°	78
25	360°	40	360°	48	360°	57	360°	63	360°	67	360°	71	360°	77
30	360°	26	360°	38	360°	50	360°	58	360°	63	360°	67	360°	73
35	360°		25	35000	43	35000	52	35000	59	35000	63	30200	67	25500
40	360°			34	27800	46	27800	54	27800	59	27000	64	22700	40
45	360°				22	21700	39	21700	49	21700	55	21700	61	20500
50	360°						31	17400	43	17400	50	17400	57	17400
55	360°							21	14300	37	14300	46	14300	53
60	360°								29	11600	40	11600	49	
65	360°								19	9800	35	9800	45	
70	360°									28	7900	40	7900	
75	360°									18	6500	35	6500	
80	360°										29	5300	80	
85	360°										22	4300	85	

DEDUCTIONS TO BE MADE FROM LOAD RATINGS IN POUNDS

DESCRIPTION	WITHOUT HOOK BLOCK ON BOOM POINT	HOOK BLOCK ON POWERED BOOM POINT		
		8.5 - 20 TON	25 TON	35 TON WITH AUXILIARY SHEAVE
HOOK BLOCK WEIGHT		580	1130	1325
STOWED		800	1340	1530
39 FT. LATTICE EXTENSION ERECTED ONLY		4070	4610	4800
8.5-15 TON BALL		3780	6300	6490
20 TON BLOCK		8170	8710	6900
STOWED		820	1170	820
40 FT. LATTICE EXTENSION ERECTED ONLY		5680	6220	5870
8.5-15 TON BALL		7390	7930	8120
20 TON BLOCK		7800	8340	7990
STOWED		5680	6220	5870
60 FT. LATTICE EXTENSION ERECTED ONLY		7840	8380	8030
8.5-15 TON BALL		8380	8900	8550
20 TON BLOCK		8380	8900	8550
39 FT. LATTICE EXTENSION 8.5-15 TON BALL	470	820	1140	930
20 TON BLOCK	580	930	1250	1040
40 FT. LATTICE EXTENSION 8.5-15 TON BALL	470	810	1130	920
20 TON BLOCK	580	920	1240	1040
60 FT. LATTICE EXTENSION 8.5-15 TON BALL	470	770	1050	870
20 TON BLOCK	580	880	1160	980

NOTE: THESE LOAD DEDUCTIONS APPLY ONLY TO P&H SUPPLIED EQUIPMENT. (SEE INFORMATION NOTE #3)

FORMATION:

CRANE LOAD RATINGS DO NOT EXCEED 85% OF TIPPING.

RATINGS ABOVE THE HEAVY LINE ARE BASED ON THE MACHINE'S HYDRAULIC OR STRUCTURAL COMPETENCE AND NOT ON MACHINE STABILITY.

DEDUCTIONS MUST BE MADE FROM RATED LOADS FOR STOWED LATTICE EXTENSION, OPTIONAL ATTACHMENTS, HOOKS AND HOOKBLOCKS (SEE DEDUCTIONS CHART). WEIGHTS OF SLINGS AND ALL OTHER LOAD HANDLING DEVICES SHALL BE CONSIDERED A PART OF THE LOAD.

RATED LOAD RATINGS WITH OUTRIGGERS ARE BASED ON OUTRIGGERS FULLY EXTENDED AND SET TO DISTANCE OF 11 FEET 9 3/4 INCH FROM THE LONGITUDINAL AXIS OF THE CARRIER TO THE OUTRIGGER FLOAT PIVOT CONNECTION WITH ALL LOAD REMOVED FROM CARRIER WHEELS.

COUNTERWEIGHT 13230 LBS. NONE REMOVABLE.

MAIN HOIST REEVING

3/4 DIA. WIRE ROPE BREAKING STRENGTH 58,800 LBS. 6 X 25 FW IWRC

PART OF LINE	1	2	3	4	5	6	7	8	9	10
MAXIMUM LOAD	15000	30000	45000	60000	75000	90000	105000	120000	130000	-

AUXILIARY HOIST REEVING

3/4 DIA. WIRE ROPE BREAKING STRENGTH 51,800 LBS. 8 X 25 IWRC

5/8 DIA. WIRE ROPE BREAKING STRENGTH 41,200 LBS. 6 X 25 FW IWRC

PART OF LINE	1	2	3	4	5	6	7	8	9	10
MAXIMUM LOAD	10000	20000	30000	40000	50000	60000	70000	80000	90000	100000

LOAD RATINGS IN POUNDS WITH OUTRIGGERS EXTENDED

OPERATING RADIUS IN FEET	PINNED SECTION EXTENDED		LATTICE EXTENSION WITH PINNED SECTION RETRACTED		LATTICE EXTENSION WITH PINNED SECTION EXTENDED	
	LOADED BOOM ANGLE	RATED LOAD IN POUNDS	LOADED BOOM ANGLE	RATED LOAD IN POUNDS	LOADED BOOM ANGLE	RATED LOAD IN POUNDS
30	360°	78	360°	77	360°	77
35	360°	74	360°	75	360°	75
40	360°	71	360°	72	360°	72
45	360°	69	360°	70	360°	70
50	360°	67	360°	68	360°	68
55	360°	64	360°	66	360°	66
60	360°	61	360°	64	360°	64
65	360°	59	360°	61	360°	61
70	360°	56	360°	59	360°	59
75	360°	53	360°	56	360°	56
80	360°	49	360°	53	360°	53
85	360°	46	360°	51	360°	51
90	360°	43	360°	48	360°	48
100	360°	35	360°	41	360°	41
110	360°	25	360°	34	360°	34

NOTE: WHEN BOOM IS NOT FULLY EXTENDED, USE ONLY BOOM ANGLES, NOT OPERATING RADIIUS TO DETERMINE LOAD RATING.

FOR BOOM ANGLES NOT SHOWN, USE RATING OF NEXT LOWER BOOM ANGLE.

FOR BUCKET RATINGS ON 60 FT. EXTENSIONS, DEDUCT 20% FROM LOAD RATINGS.

WARNING: A TIPPING CONDITION WILL OCCUR (WITH OR WITHOUT A HOOKBLOCK) WITH 39, 40, OR 60 FT. BOOM EXTENSION DUE TO THE FOLLOWING CONDITIONS:

- DO NOT EXCEED 120 FT. OPERATING RADIUS WITH PINNED MAIN BOOM SECTION RETRACTED.
- DO NOT EXCEED 140 FT. OPERATING RADIUS WITH PINNED MAIN BOOM SECTION EXTENDED.

NOTE: OPERATION OF THIS EQUIPMENT IN EXCESS OF RATED LOADS AND DISREGARD OF INSTRUCTIONS IS AN UNSAFE PRACTICE AND WILL RESULT IN DENIAL OF WARRANTY CLAIMS.



LOAD RATINGS — 3 Section Boom PCSA Class 10-270

IN POUNDS	
POWERED BOOM POINT	
65 - 20 TON WITH AUXILIARY SHEAVE	65 TON WITH AUXILIARY SHEAVE
775	1325
990	1530
4260	4800
5950	6490
6360	6900
820	1360
5870	6410
7580	8120
7990	8540
5870	6410
8030	8570
8550	9090
930	1250
1040	1370
920	1240
1040	1360
870	1150
980	1260

X 25 FW IWRC		
8	9	10
120000	130000	-

X 25 IWRC		
8	9	10
80000	100000	-

OPERATING RADIUS FT.	POWER BOOM LENGTH IN FEET - MANUAL RETRACTED												OPERATING RADIUS FT.		
	39 FT.		45 FT.		55 FT.		65 FT.		75 FT.		85 FT.			96.5 FT.	
	LOADED BOOM ANGLE	RATED LOAD POUNDS	LOADED BOOM ANGLE	RATED LOAD POUNDS	LOADED BOOM ANGLE	RATED LOAD POUNDS	LOADED BOOM ANGLE	RATED LOAD POUNDS	LOADED BOOM ANGLE	RATED LOAD POUNDS	LOADED BOOM ANGLE	RATED LOAD POUNDS		LOADED BOOM ANGLE	RATED LOAD POUNDS
10	68	130000	71	102000	75	94800								10	
12	64	115000	68	98400	72	88000	76	80400						12	
15	59	90000	64	90000	69	84000	73	72800	78	60500				15	
20	50	68500	56	68500	63	68500	68	63500	72	53000	74	44500	78	33000	20
25	39	53000	48	53000	57	53000	63	53000	68	45000	71	39000	74	32500	25
30	24	42000	38	42000	50	42000	58	42000	63	40000	67	34200	70	30000	30
35			25	34400	43	34400	52	34400	59	34400	63	30200	67	26700	35
40					34	27000	46	27000	54	27000	59	27000	64	24000	40
45					23	21300	40	21300	49	21300	55	21300	60	21300	45
50							32	17500	43	17500	51	17500	57	17500	50
55							21	14500	37	14500	46	14500	53	14500	55
60									29	11900	41	11900	49	11900	60
65									19	10100	35	10100	44	10100	65
70											28	8500	40	8500	70
75											18	7200	35	7200	75
80													28	6000	80
85													21	5100	85

INFORMATION:

- CRANE LOAD RATINGS DO NOT EXCEED 85% OF TIPPING.
- RATINGS ABOVE THE HEAVY LINE ARE BASED ON THE MACHINE'S HYDRAULIC OR STRUCTURAL COMPETENCE AND NOT ON MACHINE STABILITY.
- DEDUCTIONS MUST BE MADE FROM RATED LOADS FOR STOWED LATTICE EXTENSION, OPTIONAL ATTACHMENTS, HOOKS AND HOOKBLOCKS (SEE DEDUCTIONS CHART). WEIGHTS OF SLINGS AND ALL OTHER LOAD HANDLING DEVICES SHALL BE CONSIDERED A PART OF THE LOAD.
- CRANE LOAD RATINGS WITH OUTRIGGERS ARE BASED ON OUTRIGGERS FULLY EXTENDED AND SET TO A DISTANCE OF 11 FEET 9 3/4 INCH FROM THE LONGITUDINAL AXIS OF THE CARRIER TO THE OUTRIGGER FLOAT PIVOT CONNECTION WITH ALL LOAD REMOVED FROM CARRIER WHEELS.
- COUNTERWEIGHT OF 12000 LBS. WITH NONE REMOVABLE.

EXTENDED	
OPERATING RADIUS FT.	RATED LOAD IN POUNDS
78	8000
76	7500
75	7000
73	6600
71	6100
70	5700
68	5400
66	5100
65	4800
63	4500
61	4000
60	3500
58	2800
57	1900

LOAD RATINGS IN POUNDS WITH OUTRIGGERS EXTENDED											
OPERATING RADIUS FT.	LATTICE EXTENSION						OPERATING RADIUS FT.				
	39 FT.		40 FT.		60 FT.						
	LOADED BOOM ANGLE	RATED LOAD IN POUNDS	LOADED BOOM ANGLE	RATED LOAD IN POUNDS	LOADED BOOM ANGLE	RATED LOAD IN POUNDS					
78	77	16000	30	77	15500	30					
76	75	15000	35	75	14200	35	77				
75	70		40	73	13000	40	75				
73	6600		45	70	12100	45	73				
71	6100		50	68	11000	50	71				
70	5700		55	67	10300	55	69				
68	5400		60	64	9600	60	68				
66	5100		65	61	9100	65	66				
65	4800		70	59	8500	70	64				
63	4500		75	56	8000	75	62				
61	4000		80	54	7000	80	59				
60	3500		85	51	6000	85	57				
58	2800		90	48	5100	90	55				
57	1900		100	41	3600	100	50				
			110	33	2500	110	45				
			120	23	2200	120	38				
						130	32				

WARNING:
DO NOT EXCEED 130 FT. RADIUS (WITH OR WITHOUT HOOK BLOCK) WITH 80 FT. BOOM EXTENSION OR A TIPPING CONDITION WILL OCCUR.

NOTE:

- WHEN BOOM IS NOT FULLY EXTENDED, USE ONLY BOOM ANGLES, NOT OPERATING RADIUS TO DETERMINE LOAD RATING.
- FOR BOOM ANGLES NOT SHOWN, USE RATING OF NEXT LOWER BOOM ANGLE.
- FOR BUCKET RATINGS ON 80 FT. EXTENSION, DEDUCT 20% FROM LOAD RATINGS.

WARNINGS:

- LOADED BOOM ANGLES AT SPECIFIED BOOM LENGTHS OR AN APPROXIMATION OF THE OPERATING RADIUS. THE BOOM ANGLE BEFORE LOADING SHOULD BE GREATER TO ACCOMMODATE DEFLECTIONS. DO NOT EXCEED THE OPERATING RADIUS RATED LOADS.
- POSITIONING OR OPERATION OF POWERED BOOM LENGTHS BEYOND THE MAXIMUMS OR MINIMUMS SHOWN, IS NOT INTENDED OR APPROVED.
- POSITIONING OR OPERATION OF LATTICE EXTENSIONS AT ANGLES BEYOND THE MAXIMUMS OR MINIMUMS SHOWN, IS INTENDED OR APPROVED.
- FOR POWERED BOOM LENGTHS NOT SHOWN, USE RATING OF NEXT LONGER POWERED BOOM. FOR LOAD RADI NOT SHOWN, USE RATING OF NEXT LONGER RADIUS.
- CRANE LOAD RATINGS ON OUTRIGGERS ARE BASED ON FIRM UNIFORM SUPPORTING SURFACE. NO ATTEMPT BE MADE TO MOVE A LOAD HORIZONTALLY ON THE GROUND IN ANY DIRECTION.
- PRACTICAL WORKING LOADS DEPEND ON SUPPORTING SURROUNDINGS, WIND, AND OTHER FACTORS AFFECTING STABILITY, HAZARDOUS SURROUNDINGS, EXPERIENCE OF PERSONNEL, AND PROPER LIFTING. ALL OF WHICH MUST BE TAKEN INTO ACCOUNT BY OPERATOR.
- THE MAXIMUM LOAD WHICH MAY BE TELESCOPED IS LIMITED BY HYDRAULIC PRESSURE, BOOM ANGLE, AND POWERED BOOM LUBRICATION. IT IS SAFE TO ATTEMPT TO TELESCOPE A LOAD WITHIN THE LIMITS OF THE LOAD RATING CHART.
- WHEN LIFTING A LOAD ALL SECTIONS OF POWERED BOOM BE EQUALLY EXTENDED WITHIN ONE FOOT.

DEFINITIONS:

- OPERATING RADIUS IS THE HORIZONTAL DISTANCE FROM AXIS OF ROTATION BEFORE LOADING TO THE CENTER OF VERTICAL HOIST LINE OR TACKLE WITH LOAD APPLIED.
- LOADED BOOM ANGLE, AS SHOWN IN COLUMN HEADED BY IS THE INCLUDED ANGLE BETWEEN THE HORIZONTAL AND LONGITUDINAL AXES OF THE BOOM BASE AFTER LIFTING LOAD AT RATED RADIUS.

ATED SAFE

LOAD RATINGS FOR OFFSET EXTENSION WITH 126 FOOT BOOM

LC
PC

LOAD RATINGS IN POUNDS FOR 17° OFFSET WITH OUTRIGGERS EXTENDED																	
LATTICE EXTENSION WITH PINNED SECTION RETRACTED						LATTICE EXTENSION WITH PINNED SECTION EXTENDED											
39 FT.		40 FT.		60 FT.		39 FT.		40 FT.		60 FT.							
OPERATING RADIUS IN FEET	BOOM LENGTH IN FEET	OPERATING RADIUS IN FEET	BOOM LENGTH IN FEET	OPERATING RADIUS IN FEET	BOOM LENGTH IN FEET	OPERATING RADIUS IN FEET	BOOM LENGTH IN FEET	OPERATING RADIUS IN FEET	BOOM LENGTH IN FEET	OPERATING RADIUS IN FEET	BOOM LENGTH IN FEET						
FOR ALL BOOM LENGTHS 79 TO 136.3 FT.		FOR ALL BOOM LENGTHS 80 TO 137.3 FT.		FOR ALL BOOM LENGTHS 100 TO 137.3 FT.		FOR ALL BOOM LENGTHS 107.7 TO 163 FT.		FOR ALL BOOM LENGTHS 108.7 TO 166 FT.		FOR ALL BOOM LENGTHS 128.7 TO 186 FT.							
RATED LOAD IN POUNDS		RATED LOAD IN POUNDS		RATED LOAD IN POUNDS		RATED LOAD IN POUNDS		RATED LOAD IN POUNDS		RATED LOAD IN POUNDS							
360°		360°		360°		360°		360°		360°							
36	78	9300	36	78	8000	36	78	5100	36	78	8300	36	78	7300	36	78	4800
40	76	8900	40	76	7700	40	76	4900	40	76	8100	40	76	7100	40	76	4600
45	74	8500	45	74	7300	45	74	4700	45	74	7700	45	74	6900	45	74	4400
50	72	8100	50	72	6900	50	72	4500	50	72	7300	50	72	6400	50	72	4200
55	69	7800	55	70	6700	55	75	4300	55	75	6900	55	75	6000	55	75	4000
60	67	7500	60	68	6400	60	73	4100	60	73	6500	60	73	5700	60	73	3800
65	65	7200	65	65	6200	65	71	3900	65	71	6100	65	71	5400	65	71	3600
70	62	7000	70	63	6000	70	69	3800	70	69	5900	70	70	5100	70	70	3400
75	60	6800	75	60	5800	75	67	3700	75	67	5700	75	68	4900	75	72	3200
80	57	6600	80	58	5600	80	63	3600	80	63	5500	80	66	4700	80	71	3000
85	54	6400	85	55	5400	85	62	3500	85	62	5300	85	64	4500	85	69	2800
90	52	6200	90	52	5200	90	60	3400	90	61	5100	90	62	4300	90	67	2600
100	45	4500	100	46	3900	100	53	3400	100	57	5100	100	57	4300	100	64	3000
110	37	3200	110	38	2500	110	50	3200	110	52	4000	110	52	3300	110	60	2400
120			120			120	44	2800	120	46	2900	120	47	2200	120	56	2100
130			130			130			130			130			130	51	2600

LOAD RATINGS IN POUNDS FOR 30° OFFSET WITH OUTRIGGERS EXTENDED																	
LATTICE EXTENSION WITH PINNED SECTION RETRACTED						LATTICE EXTENSION WITH PINNED SECTION EXTENDED											
39 FT.		40 FT.		60 FT.		39 FT.		40 FT.		60 FT.							
OPERATING RADIUS IN FEET	BOOM LENGTH IN FEET	OPERATING RADIUS IN FEET	BOOM LENGTH IN FEET	OPERATING RADIUS IN FEET	BOOM LENGTH IN FEET	OPERATING RADIUS IN FEET	BOOM LENGTH IN FEET	OPERATING RADIUS IN FEET	BOOM LENGTH IN FEET	OPERATING RADIUS IN FEET	BOOM LENGTH IN FEET						
FOR ALL BOOM LENGTHS 79 TO 136.3 FT.		FOR ALL BOOM LENGTHS 80 TO 137.3 FT.		FOR ALL BOOM LENGTHS 100 TO 137.3 FT.		FOR ALL BOOM LENGTHS 107.7 TO 163 FT.		FOR ALL BOOM LENGTHS 108.7 TO 166 FT.		FOR ALL BOOM LENGTHS 128.7 TO 186 FT.							
RATED LOAD IN POUNDS		RATED LOAD IN POUNDS		RATED LOAD IN POUNDS		RATED LOAD IN POUNDS		RATED LOAD IN POUNDS		RATED LOAD IN POUNDS							
360°		360°		360°		360°		360°		360°							
36			36			36			36			36			36		
40			40			40			40			40			40		
45	77	7100	45	77	6300	45			45			45			45		
50	75	6900	50	75	6100	50			50			50			50		
55	72	6700	55	73	5900	55	77	6800	55	78	5900	55			55		
60	70	6500	60	70	5700	60	75	6600	60	76	5800	60			60		
65	68	6300	65	68	5500	65	73	6500	65	74	5600	65			65		
70	65	6100	70	66	5400	70	73	6400	70	72	5500	70	77	3700	70	77	3700
75	63	6000	75	63	5200	75	71	6100	75	70	5300	75	75	3600	75	75	3600
80	60	5900	80	60	5100	80	69	5800	80	68	5000	80	68	5000	80	74	3500
85	57	5800	85	58	5000	85	66	5600	85	66	4700	85	66	4700	85	72	3400
90	54	5700	90	55	4900	90	64	5300	90	64	4500	90	64	4500	90	70	3300
100	48	4900	100	48	4200	100	59	4900	100	60	4100	100	59	4100	100	67	3200
110	40	3400	110	40	2700	110	54	4300	110	55	3600	110	55	3600	110	63	3000
120			120			120	48	3100	120	49	2400	120	49	2400	120	59	2700
130			130			130	40	2000	130	42	2100	130	42	2100	130	54	2500

LOAD RATINGS FOR OFFSET EXTENSION WITH 96.5 FOOT BOOM

LOAD RATINGS IN POUNDS FOR 17° OFFSET WITH OUTRIGGERS EXTENDED						LOAD RATINGS IN POUNDS FOR 30° OFFSET WITH OUTRIGGERS EXTENDED								
39 FT. LATTICE EXTENSION		40 FT. LATTICE EXTENSION RETRACTED		60 FT. LATTICE EXTENSION EXTENDED		39 FT. LATTICE EXTENSION		40 FT. LATTICE EXTENSION RETRACTED		60 FT. LATTICE EXTENSION EXTENDED				
OPERATING RADIUS IN FEET	BOOM LENGTH IN FEET	OPERATING RADIUS IN FEET	BOOM LENGTH IN FEET	OPERATING RADIUS IN FEET	BOOM LENGTH IN FEET	OPERATING RADIUS IN FEET	BOOM LENGTH IN FEET	OPERATING RADIUS IN FEET	BOOM LENGTH IN FEET	OPERATING RADIUS IN FEET	BOOM LENGTH IN FEET			
FOR ALL BOOM LENGTHS 78 TO 135.5 FT.		FOR ALL BOOM LENGTHS 79 TO 136.5 FT.		FOR ALL BOOM LENGTHS 94 TO 136.5 FT.		FOR ALL BOOM LENGTHS 78 TO 135.5 FT.		FOR ALL BOOM LENGTHS 79 TO 136.5 FT.		FOR ALL BOOM LENGTHS 94 TO 156.5 FT.				
RATED LOAD IN POUNDS		RATED LOAD IN POUNDS		RATED LOAD IN POUNDS		RATED LOAD IN POUNDS		RATED LOAD IN POUNDS		RATED LOAD IN POUNDS				
360°		360°		360°		360°		360°		360°				
35	78	9100	35	77	7900	35			35			35		
40	76	8700	40	74	7500	40			40			40		
45	74	8300	45	72	7200	45			45			45		
50	72	8000	50	70	6900	50	77	5000	50	75	6800	50		
55	69	7700	55	70	6600	55	75	4700	55	73	6600	55		
60	67	7400	60	68	6300	60	73	4500	60	70	6400	60	70	5600
65	65	7100	65	65	6000	65	71	4300	65	68	6200	65	68	5500
70	62	6900	70	63	5700	70	69	4200	70	65	6100	70	66	5300
75	60	6700	75	60	5500	75	67	4000	75	62	6000	75	63	5200
80	57	6500	80	58	5300	80	65	3800	80	60	5800	80	60	5100
85	54	6300	85	55	5100	85	62	3700	85	57	5700	85	57	4900
90	51	6100	90	52	4900	90	60	3600	90	54	5600	90	54	4700
100	45	4800	100	45	4200	100	55	3300	100	47	5100	100	48	4500
110	37	3600	110	38	2900	110	50	3200	110	39	3700	110	40	3100
120			120			120	44	3000	120			120		
130			130			130	37	2100	130			130		

OPERATING RADIUS IN FEET	BOOM LENGTH IN FEET	RATED LOAD IN POUNDS
10	68	1
12	65	1
15	60	
20	51	
25	40	
30	26	
35		
40		
45		
50		
55		
60		
65		
70		
75		
80		
85		

- INFORMATION
1. CRANE LOAD
 2. RATINGS ARE COMPETENCE
 3. DEDUCTIONS ATTACHMENT OTHER LOAD
 4. CRANE LOAD A DISTANCE OUTRIGGER F
 5. COUNTERWEI

OPERATING RADIUS IN FEET	BOOM LENGTH IN FEET	RATED LOAD IN POUNDS
30	76	
35	74	
40	71	
45	69	
50	67	
55	64	
60	61	
65	59	
70	56	
75	53	
80	49	
85	46	
90	43	
100	35	
110	25	

- NOTE:
1. WHEN BO NOT OPE
 2. FOR BOO BOOM AN
 3. FOR BUC FROM LO

NOT
LOA
PRA

- NOTES: 1. SEE MAIN LOAD RATING CHART ON OUTRIGGERS FOR WARNINGS, DEFINITIONS, INFORMATION AND REEVEING. 2. FOR BOO BOOM AN 3. STABILITY RATINGS DO NOT EXCEED 85% OF TIPPING LOADS. 4. WHEN BOO IS NOT FULLY EXTENDED USE ONLY BOO ANGLES, NOT OPERATING RADIUS TO DETERMINE LOAD RATING. 5. FOR BOO ANGLES NOT SHOWN, USE RATING OF NEXT LOWER BOO ANGLE.
- WARNINGS: 1. DO NOT EXCEED 140 FT. RADIUS (WITH OR WITHOUT HOOK BLOCK) WITH 39 FT., 40 FT. OR 60 FT. BOOM EXTENSION OR A TIPPING CONDITION. 2. DEDUCTIONS FROM OFFSET EXTENSION LOAD RATINGS MUST BE APPLIED ACCORDING TO DEDUCTION TABLE SHOWN ON MAIN LOAD RATING CHART.

USE OF THIS DOCUMENT IN EXCESS OF THAT FOR WHICH IT WAS ISSUED IS AN UNSAFE PRACTICE AND WILL RESULT IN DENIAL OF WARRANTY.



POWER PLANTS:

MAKE: Detroit Diesel Allison 6V53T (Optional).
 MAX. HP: 228 HP (170 kw) at 2600 rpm.
 MAX. TORQUE: 534 ft./lbs. (74 kg. - m) at 1600 rpm.

NO. CYL: 6 cylinder, 3.875 inch (98 mm) bore, 4.50 inch (114 mm) stroke.

DISP: 318 cu. in. (5.21 liter).

CYCLE: 2.

ALTERNATOR: Leece Neville 24 volt, NEG GRN 65 amp.

ELECTRICAL: 24 volt run, 24 volt starting.

ASPIRATION: Turbocharged.

AIR COMPRESSOR: 12 cfm @ 1250 rpm (340 liters/min.).

*THEORETICAL PERFORMANCE: Low Gear 2.2 mph (3.5 KM/HR) 47% grade at 1.0 MPH.

High Gear 24.4 mph (39 KM/HR) 4% grade

MAKE: Caterpillar 3208T (Standard).

MAX. HP: 225 HP (168 kw) at 2600 rpm.

MAX. TORQUE: 564 ft./lbs. (78 kg. - m) at 1300 rpm.

NO. CYL: 6 cyl., 4.50 inches (114 mm) bore, 5.00 inch (127 mm) stroke.

DISP: 636 cu. in. (10.42 liter).

CYCLE: 4.

ALTERNATOR: 24 volt, NEG GRN 50 amp. •

ELECTRICAL: 24 volt run, 24 volt starting.

ASPIRATION: Turbocharged.

AIR COMPRESSOR: 12 CFM @ 1250 RPM (340 liters/min.)

*THEORETICAL PERFORMANCE: Low Gear 2.2 mph (3.5 KM/HR) 48% grade at 1.0 mph.

High Gear 24.4 mph (39 KM/HR) 4% grade

*Theoretical performance is based on the following:

GVW: 93,700 lbs. (42,500 kg.)

Front Tires: 29.5 x 25 E3.

Rear Tires: 29.5 x 25 E3.

Counterweight: 13,230 lbs. (6,000 kg.).

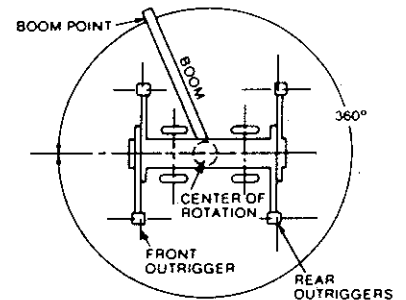
Boom: 40 ft. (12 m) to 126 ft. (38.4 m).

Speed and gradeability will vary due to engine performance, vehicle weight and optional tires. Gradeability based on SAE J688.

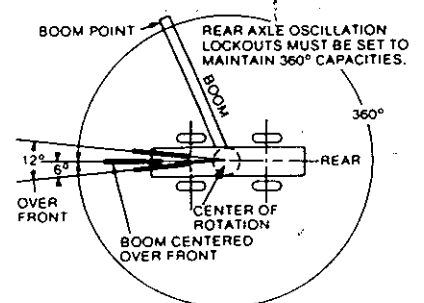
	WEIGHT DISTRIBUTION					
	POUNDS			KILOGRAMS		
	GROSS	FRONT	REAR	GROSS	FRONT	REAR
BASIC CARRIER	30360	15091	15269	13771	6845	6926
BASIC UPPER	6832	1495	5337	3099	678	2421
STD. OPT. FOR 65 TON						
126 FT. 4SECT. BOOM	21473	28389	-6916	9740	12877	-3137
EASYRIDE B.H.CYL. INST.	3386	3170	216	1536	1438	98
13230 LB. CTWT.	13241	-7187	20428	6006	-3260	9266
MAIN WINCH (2081)	1799	-664	2463	816	-301	1117
M.W. ROPE .75DIA X550 FT.	584	-94	678	265	-43	308
SLAB CTWT. OR AUX. WINCH	1086	-611	1698	493	-277	770
CAT.3208T ENG. W/P-SHIFT	3569	2926	640	1619	1327	292
29.5X25 E-3 TIRES	7363	3682	3682	3340	1670	1670
REAR AXLE INST. STD.	4718	-7	4725	2140	-3	2143
SINGLE POS. HOUSE LOCK	11	6	5	5	3	2
60/65 TON-5SHV. HKBK. HOOKED ON FRONT O/R FOR TRAVEL	1122	1875	-753	509	851	-342
STEEL BOOM POINT SHV. & POINT PIN	408	1221	-813	185	554	-369
BASIC MACHINE	95547	49377	46170	43524	22402	21122
ADJUSTMENTS FOR OPTIONS:						
ATTACHMENT OPTIONS:						
AUX. SHEAVE INST.	154	481	-326	70	218	-148
40 TO 60 FT. EXT. INST.	2805	3791	-986	1272	+1720	-448
20 TON-ISHV. HOOKBLOCK	580	1736	-1156	263	787	-524
15 TON-BALLHOOK ON AUX. SHV.	467	1425	-958	161	596	-435
8.5 TON-BALLHOOK ON AUX. SHV.	265	809	-544	120	367	-247
OFFSET BOOM EXT. INST. MATL.	148	437	-289	67	198	-131
B.H. CYL. W/O EASYRIDE	-254	-94	-160	-115	-43	-72
39 FT. BM. EXT. INTSTL.	1752	2716	-964	795	1232	-437
POWER PLANT OPTIONS						
DDA. 6V53T ENG. W/P-SHIFT	60	49	11	27	22	5
REAR AXLE INST. NO-SPIN	0	0	0	0	0	0
WINCH OPTIONS						
INDEPENDENT MAIN & AUX. WINCH	49	3	46	22	1	21
A.W. ROPE .75DIA.X525 FT.	558	-313	871	253	-142	395
CAB OPTIONS						
HEATER-DIESEL	55	3	52	25	1	24
HEATER-LP	53	3	50	24	1	23
LP TANK-FULL	49	1	48	22	0	22
FLOODLIGHTS	29	32	-3	13	14	-1
MULTI-POSITION HOUSELOCK	42	24	-18	19	11	8
MISC. OPTIONS						
PINTLE HOOK FRONT	11	15	-4	5	7	-2
PINTLE HOOK REAR	11	-7	18	5	-3	8
60/65 TON HOOKBLOCK @ BM POINT	0	1484	-1484	0	673	-673

areas of operation

ON OUTRIGGERS



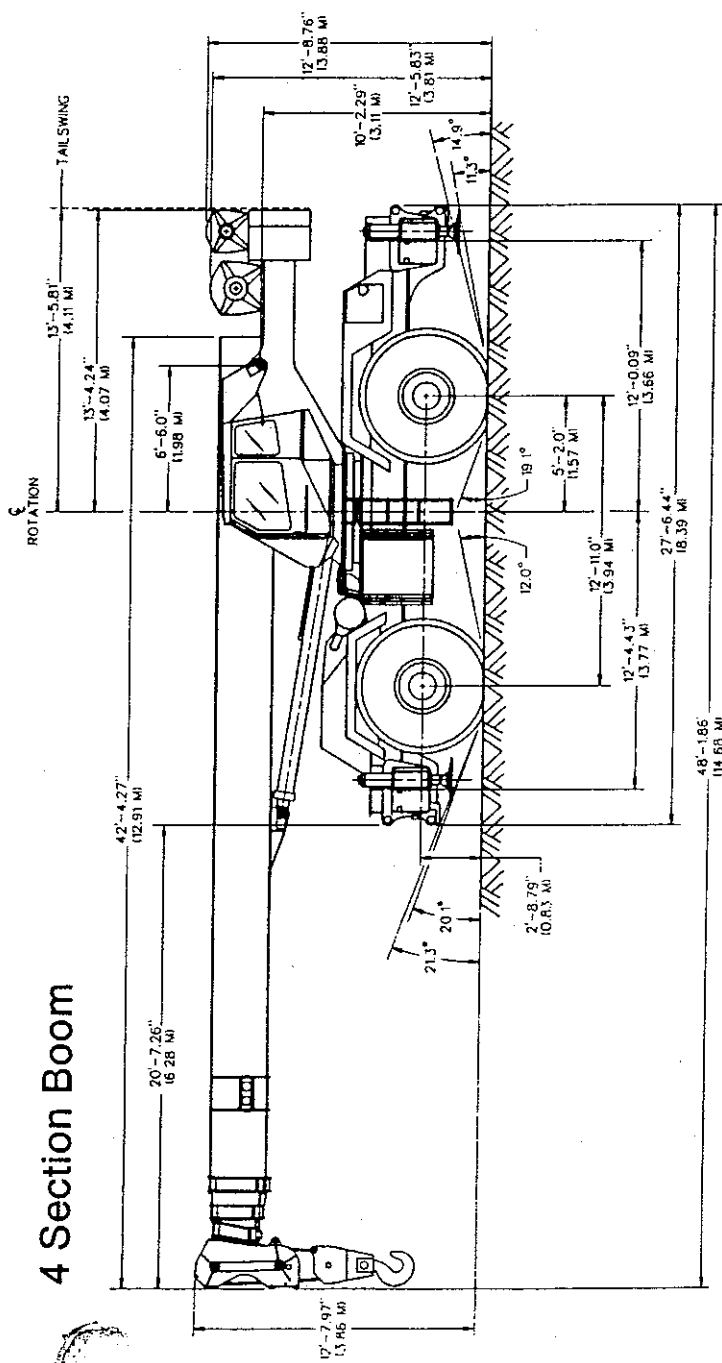
ON TIRES



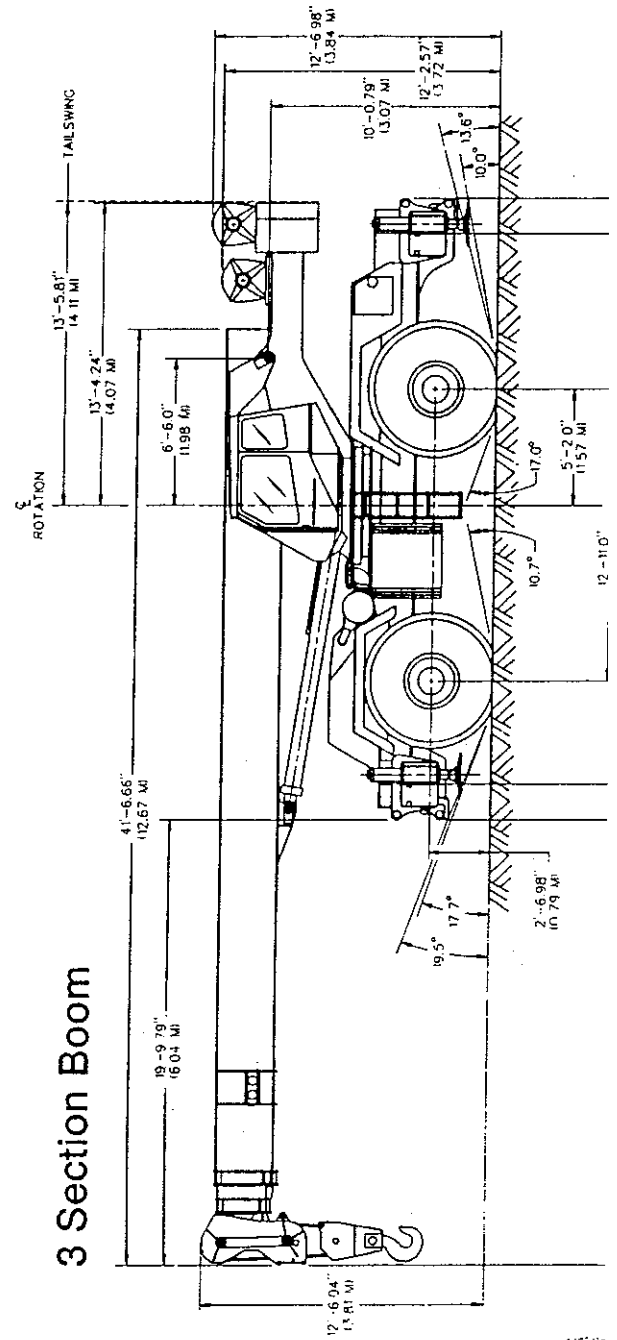


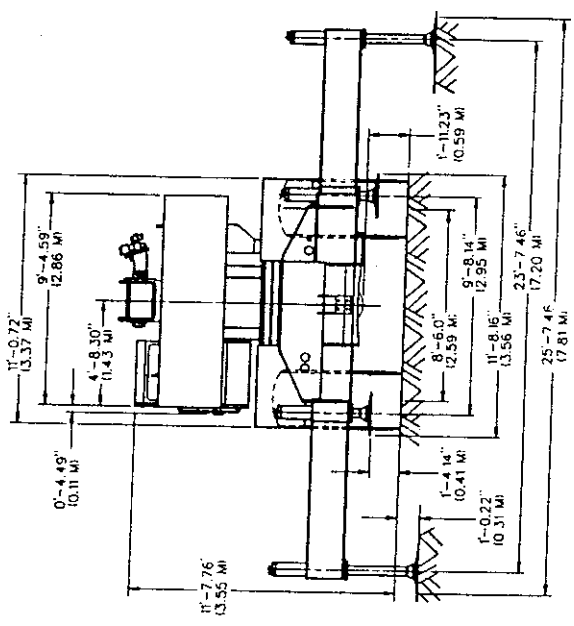
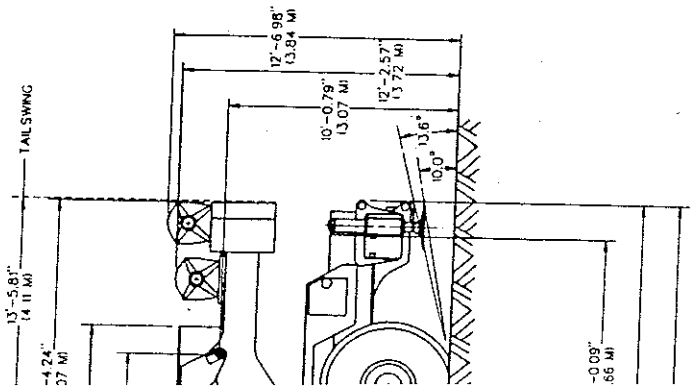
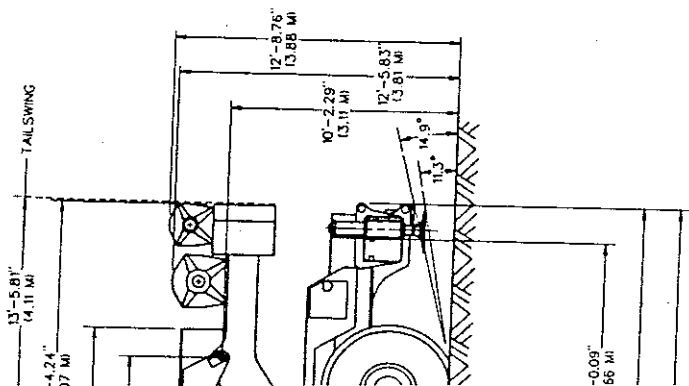
dimensions

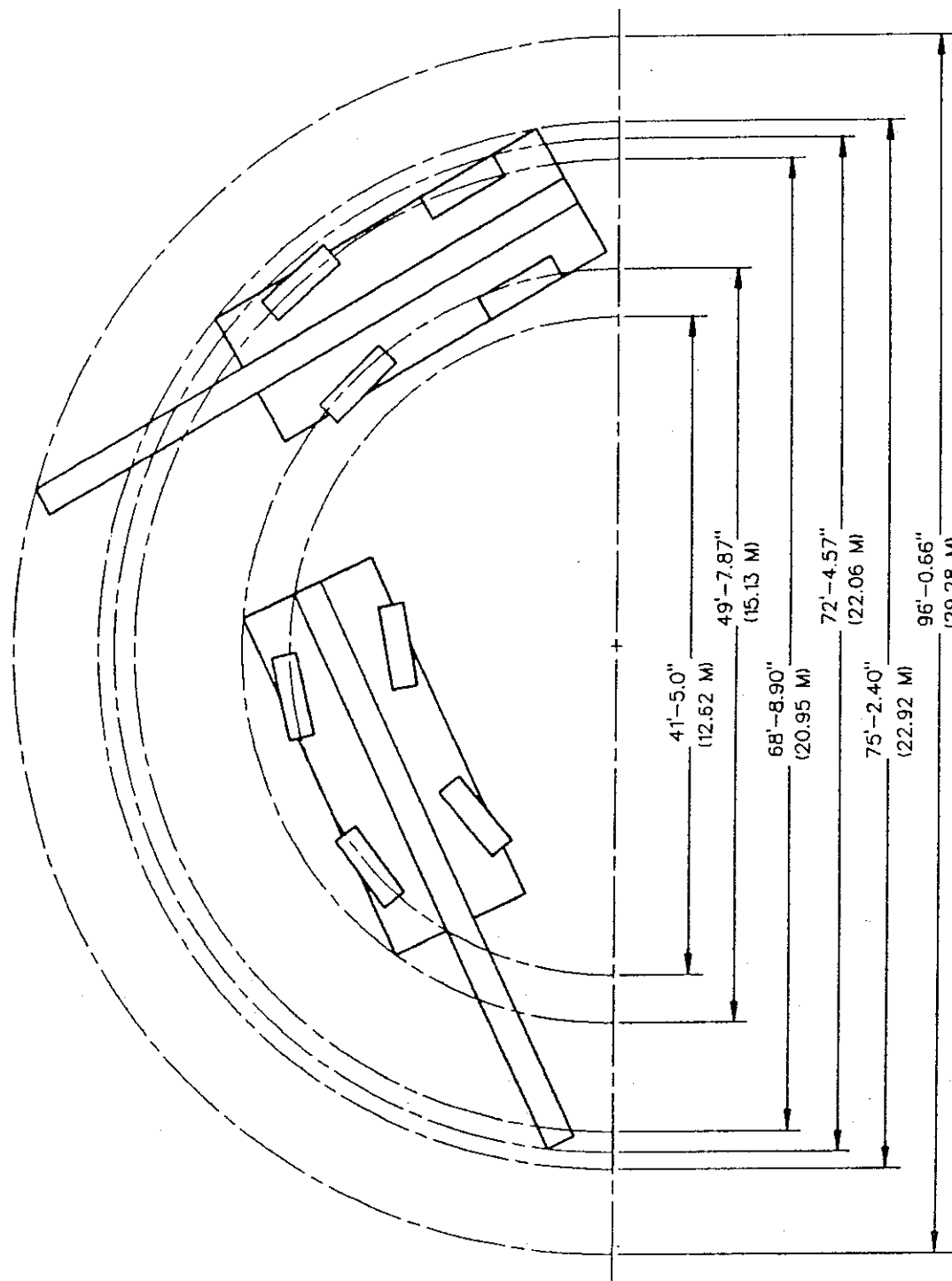
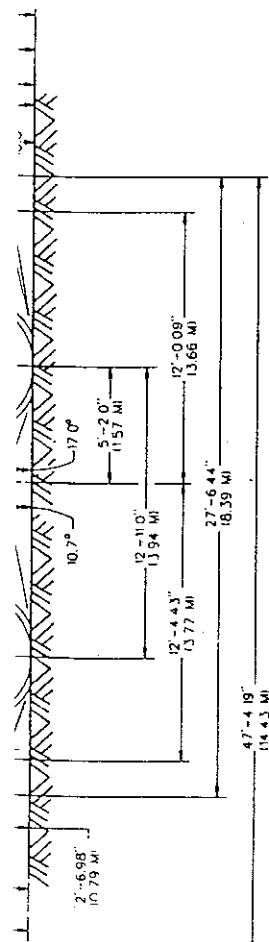
4 Section Boom



3 Section Boom







- VEHICLE TURNING DIAMETER - 4 WHEEL STEER CRAMP 41'-5.0" (12.62 M)
- VEHICLE CLEARANCE DIAMETER - FRONT AXLE STEER 68'-8.90" (20.95 M)
- BOOM CLEARANCE DIAMETER - 4 WHEEL STEER CRAMP 49'-7.87" (15.13 M)
- VEHICLE CLEARANCE DIAMETER - FRONT AXLE STEER 75'-2.40" (22.92 M)
- BOOM CLEARANCE DIAMETER - 4 WHEEL STEER CRAMP 72'-4.57" (22.06 M)