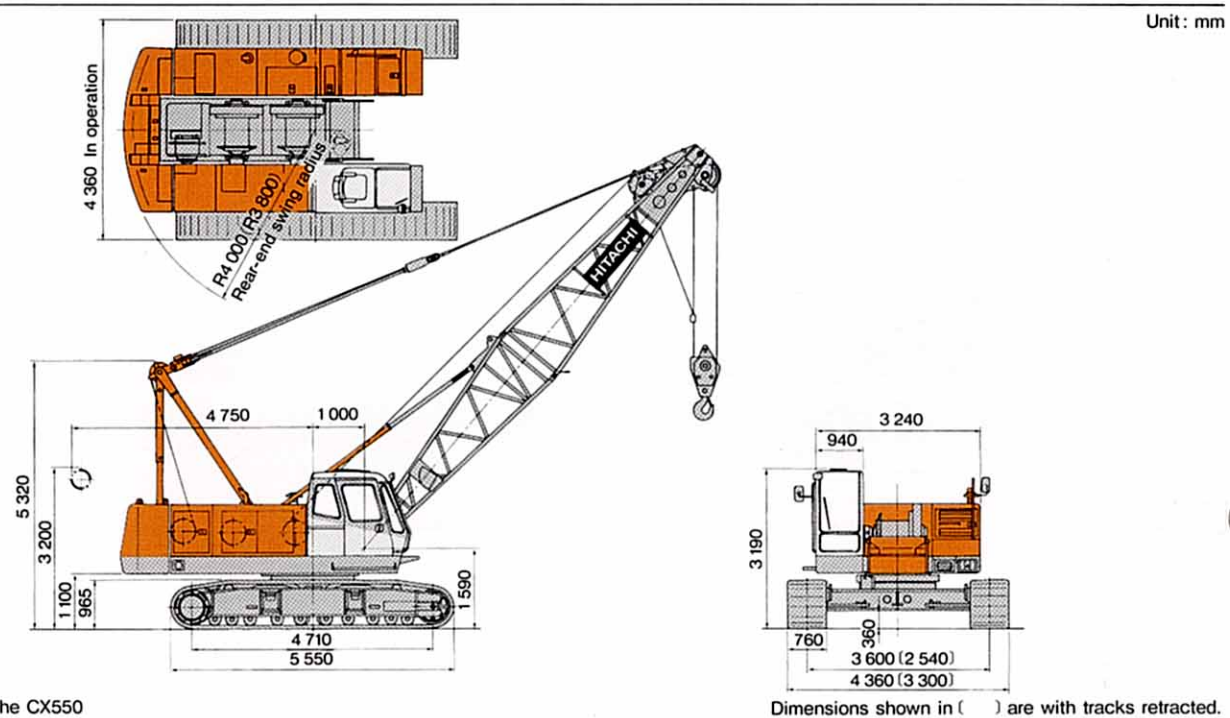


Specifications

		CX500	CX550
Maximum Rated Load		50 000 kg at 3.8 m working radius	55 000 kg at 3.7 m working radius
Boom	Basic Boom Length	10 m	10 m
	Max. Boom Length	52 m	52 m
	Jib Length	6 m to 15 m	6 m to 15 m
	Max. Boom with Jib Length	43 m + 15 m	43 m + 15 m
Drum	Main Hoist Drum	32/65/100* m/min	32/65/100* m/min
	Aux. Hoist Drum	32/65/100* m/min	32/65/100* m/min
	Boom Hoist Drum	53* m/min	53* m/min
Line Speed			
Swing Speed	0 to 4.0 min ⁻¹ (4.0 rpm)	0 to 4.0 min ⁻¹ (4.0 rpm)	
Travel Speed	0 to 1.4/1.7* km/h	0 to 1.4/1.7* km/h	
Gradeability	22° (40%)	22° (40%)	
Ground Pressure	62.8 kPa (0.64 kgf/cm ²)	66.6 kPa (0.68 kgf/cm ²)	
Operating Weight	49 500 kg (Equipped with 10 m boom and 50 000 kg capacity hook)	52 300 kg (Equipped with 10 m boom and 55 000 kg capacity hook)	
Engine	Model	Hino H07CT	Hino H07CT
	Rated Power	132.4 kW (180 PS) at 2 000 min ⁻¹ (2 000 rpm)	132.4 kW (180 PS) at 2 000 min ⁻¹ (2 000 rpm)

NOTE:
Data expressed above are in SI units (International System of Unit), followed by data in conventional units in ().
Data marked with an asterisk (*) are available in the crane mode, and the speeds may vary depending on the load.

Dimensions



Data in () is on the CX550

Dimensions shown in () are with tracks retracted.

Main Boom Construction

Boom Elements	10	13	16	19	22	25	28	31	34	37	40	43	46	49	52
Lower Boom (5 m)	1	1	1	1	1	1	1	1	1	1	1	1	1	1	1
Upper Boom (5 m)	1	1	1	1	1	1	1	1	1	1	1	1	1	1	1
Boom Inserts Combinations	I	II	I	II	I	II	I	II	I	II	I	II	I	II	I
3 m Boom Insert		1	2	1	2	1	2	1	2	1	2	1	2	1	2
6 m Boom Insert				1			1			1			1		
9 m Boom Insert					1					1					1
9 m Boom Insert (B)						1					1				
Jib-Attachable Boom	Jib length 6 to 15 m														
Aux. Jib-Attachable Boom	Jib length 6 to 15 m														

Boom inserts combinations
I : For crane boom only II : For crane boom with jib
One 6 m boom insert is replaceable with two 3 m boom inserts, and one 9 m boom insert replaceable with a combination of 3 m and 9 m boom inserts.
NOTE: When purchasing the 22 m boom, a boom length of 16 m is not available in the boom inserts combination II: in this case, a 3 m boom insert is required additionally.

Crane Rated Loads

● JIS rating (Main Boom in 360° Working Area.)

The rated loads shown don't exceed 78% of tipping loads with the machine on firm level ground.

Units: 10³ kg

Working Radius (m)	Boom Length (m)														
	10	13	16	19	22	25	28	31	34	37	40	43	46	49	52
3.5	50.00	3.8m×50.00													
4.0	48.05	47.85	4.4m×41.50												
4.5	40.10	39.80	39.75												
5.0	33.75	33.70	33.60	33.60											
5.5	29.25	29.15	29.10	29.05	28.70										
6.0	25.75	25.70	25.60	25.60	25.50	6.1m×24.80	6.7m×21.75								
7.0	20.75	20.70	20.60	20.55	20.50	20.45	20.35	7.3m×19.35	7.8m×17.30						
8.0	17.35	17.25	17.20	17.15	17.05	17.00	16.95	16.90	16.80	8.4m×15.65					
9.0	14.90	14.80	14.70	14.65	14.55	14.50	14.45	14.40	14.30	14.20	14.20	9.6m×13.00			
10.0	9.8m×12.65	12.90	12.80	12.75	12.65	12.60	12.50	12.50	12.40	12.30	12.30	12.20	10.1m×11.95	10.7m×10.70	11.3m×9.45
12.0		10.25	10.10	10.05	9.95	9.90	9.80	9.80	9.70	9.60	9.60	9.50	9.40	9.35	9.20
14.0		12.4m×9.80	8.30	8.25	8.15	8.10	8.00	7.95	7.85	7.75	7.75	7.65	7.55	7.50	7.45
16.0			15.0m×7.60	6.95	6.85	6.80	6.70	6.65	6.55	6.45	6.40	6.35	6.25	6.15	6.10
18.0				17.6m×6.15	5.85	5.80	5.70	5.65	5.55	5.45	5.45	5.35	5.25	5.15	5.10
20.0					5.10	5.05	4.95	4.85	4.75	4.70	4.65	4.55	4.45	4.40	4.30
22.0					20.2m×5.05	4.40	4.35	4.25	4.15	4.05	4.00	3.95	3.85	3.75	3.65
24.0						22.8m×4.20	3.80	3.75	3.65	3.55	3.50	3.40	3.35	3.25	3.15
26.0							25.4m×3.50	3.30	3.20	3.15	3.10	3.00	2.90	2.80	2.70
28.0								2.95	2.85	2.75	2.70	2.65	2.50	2.40	2.30
30.0									2.55	2.45	2.40	2.30	2.15	2.05	1.95
32.0										30.6m×2.40	2.20	2.10	2.00	1.85	1.75
34.0											33.2m×1.90	1.80	1.75	1.60	1.50

For notes, refer to those on page 6.

● PCSA rating (Main Boom in 360° Working Area.)

The rated loads, listed are determined according to PCSA (Power Crane and Shovel Association in U.S.A.) and do not exceed 75% of tipping load on condition that the machine is stationed on firm, level ground.

Units: 10³ kg

Working Radius (m)	Boom Length (m)														
	10	13	16	19	22	25	28	31	34	37	40	43	46	49	52
3.5	50.00	3.8m×50.00													
4.0	46.20	46.00	4.4m×39.70												
4.5	38.30	38.25	38.20												
5.0	32.45	32.40	32.30	32.30											
5.5	28.10	28.05	28.00	27.95	27.60										
6.0	24.75	24.70	24.60	24.60	24.50	6.1m×23.85	6.7m×20.90								
7.0	19.95	19.90	19.80	19.75	19.70	19.65	19.50	7.3m×18.60	7.8m×16.65						
8.0	16.65	16.60	16.50	16.45	16.40	16.35	16.30	16.25	16.15	8.4m×15.05					
9.0	14.30	14.20	14.10	14.05	14.00	13.95	13.85	13.85	13.75	13.65	13.65	13.65	13.65	13.65	13.65
10.0	9.8m×12.15	12.40	12.30	12.25	12.15	12.10	12.00	12.00	11.90	11.85	11.80	11.75	10.1m×11.45	10.7m×10.30	11.3m×9.10
12.0		9.85	9.70	9.65	9.60	9.50	9.40	9.40	9.30	9.25	9.20	9.10	9.05	8.95	8.85
14.0		12.4m×9.40	8.00	7.90	7.85	7.80	7.70	7.65	7.55	7.45	7.45	7.35	7.25	7.20	7.10
16.0			15.0m×7.30	6.70	6.60	6.55	6.45	6.40	6.30	6.20	6.15	6.10	6.00	5.90	5.85
18.0				17.6m×5.90	5.65	5.60	5.50	5.40	5.35	5.25	5.20	5.15	5.05	4.95	4.90
20.0					4.90	4.85	4.75	4.65	4.50	4.50	4.45	4.40	4.30	4.20	4.15
22.0					20.2m×4.85	4.25	4.15	4.10	4.00	3.90	3.85	3.80	3.70	3.60	3.50
24.0						22.8m×4.05	3.65	3.60	3.50	3.40	3.35	3.25	3.20	3.10	3.05
26.0							25.4m×3.35	3.15	3.10	3.00	2.95	2.85	2.80	2.70	2.60
28.0								2.85	2.75	2.65	2.60	2.55	2.45	2.35	2.25
30.0									2.45	2.35	2.30	2.25	2.10	2.05	1.95
32.0										30.6m×2.30	2.10	2.05	1.95	1.85	1.75
34.0											33.2m×1.85	1.80	1.75	1.60	1.50

For notes, refer to those on page 6.

●BS rating (Main Boom in 360° Working Area.)

The rated loads are determined according to BS (British Standard, 1981) and the machine is stationed on firm level ground. Units: 10³ kg

Working Radius (m)	Boom Length (m)														
	10	13	16	19	22	25	28	31	34	37	40	43	46	49	
3.5	50.00	3.8m×50.00													
4.0	48.05	47.85	4.4m×41.05												
4.5	40.10	39.80	39.75												
5.0	33.75	33.70	33.60	33.60											
5.5	29.25	29.15	29.10	29.05	28.70										
6.0	25.75	25.70	25.60	25.60	25.50	6.1m×24.80	6.7m×21.75								
7.0	20.75	20.70	20.60	20.55	20.50	20.45	20.35	7.3m×19.35	7.8m×17.30						
8.0	17.35	17.25	17.20	17.15	17.05	17.00	16.95	16.90	16.80	8.4m×15.65					
9.0	14.90	14.80	14.70	14.65	14.55	14.50	14.45	14.40	14.30	14.20	14.20	9.6m×13.00			
10.0	9.8m×12.65	12.90	12.80	12.75	12.65	12.60	12.50	12.50	12.40	12.30	12.30	12.20	10.1m×11.95	10.7m×10.70	
12.0		10.25	10.10	10.05	9.95	9.90	9.80	9.80	9.70	9.60	9.60	9.50	9.40	9.35	
14.0		12.4m×9.80	8.30	8.25	8.15	8.10	8.00	7.95	7.85	7.75	7.75	7.65	7.55	7.50	
16.0			15.0m×7.60	6.95	6.85	6.80	6.70	6.65	6.55	6.45	6.40	6.30	6.20	6.10	
18.0				17.6m×6.15	5.85	5.80	5.70	5.65	5.55	5.40	5.40	5.30	5.20	5.10	
20.0					5.10	5.05	4.90	4.85	4.70	4.65	4.60	4.50	4.35	4.30	
22.0					20.2m×5.05	4.40	4.30	4.20	4.10	4.00	3.95	3.85	3.75	3.65	
24.0						22.8m×4.20	3.75	3.70	3.60	3.50	3.40	3.30	3.25	3.15	
26.0							25.4m×3.45	3.25	3.10	3.05	3.00	2.90	2.80	2.70	
28.0								2.90	2.75	2.65	2.60	2.50	2.40	2.30	
30.0									2.45	2.35	2.30	2.20	2.05	2.00	
32.0										30.6m×2.30	2.10	2.00	1.90	1.70	
34.0											33.2m×1.85	1.75	1.70	1.55	1.50

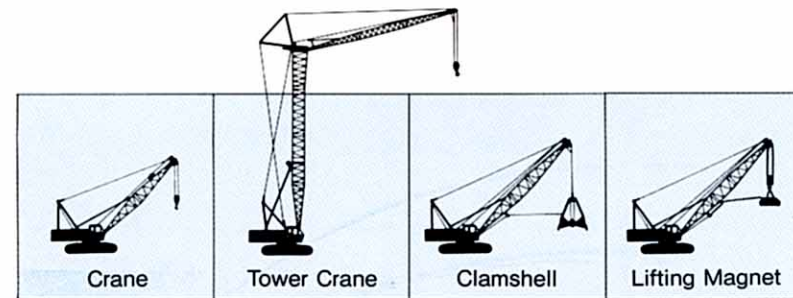
NOTE:

- To calculate the maximum load that can actually be lifted, deduct weight of all lifting accessories, such as main hook, from figures shown above.
- Working radius is the horizontal distance from the swing center to the center of gravity of a lifted load.
- The counterweight is 16 900 kg. (Two pieces)
- Be sure to fully extend the side frames before operating the machine.

5. Correlations between the number of falls, maximum rated loads, hook weights are shown in the table below.

Hook Capacity (kg)	Hook Weight (kg)	Maximum Rated Load (10 ³ kg)							
		8	7	6	5	4	3	2	1
55 000	610	50.0	45.5	39.0	32.5	26.0	19.5	13.0	—
30 000	360				30.0	26.0	19.5	13.0	—
15 000	320						15.0	13.0	—
6 500	260								6.5

Front-end Attachments Available.



Crane Rated Loads

●JIS rating (Main Boom in 360° Working Area.)

The rated loads shown don't exceed 78% of tipping loads with the machine on firm level ground. Units: 10³ kg

Working Radius (m)	Boom Length (m)															
	10	13	16	19	22	25	28	31	34	37	40	43	46	49	52	
3.5	55.00	3.7m×55.00														
4.0	51.20	51.00	4.4m×43.80													
4.5	42.30	42.20	42.15													
5.0	35.80	35.75	35.65	35.65												
5.5	31.05	30.95	30.85	30.85	30.45											
6.0	27.35	27.25	27.20	27.15	27.10	6.1m×26.30	6.7m×23.10									
7.0	22.05	21.95	21.85	21.85	21.75	21.70	21.65	7.3m×20.50	7.8m×18.40							
8.0	18.45	18.30	18.25	18.20	18.10	18.05	18.00	17.95	17.85	8.4m×16.60						
9.0	15.30	15.70	15.60	15.55	15.45	15.40	15.30	15.25	15.20	15.10	15.00	9.6m×13.80				
10.0	9.8m×12.55	13.70	13.60	13.50	13.45	13.40	13.30	13.25	13.15	13.10	13.00	12.95	10.1m×12.65	10.7m×10.70	11.3m×9.35	
12.0		10.70	10.75	10.65	10.60	10.55	10.45	10.40	10.30	10.20	10.10	10.10	10.00	9.90	9.15	
14.0		12.4m×9.90	8.80	8.75	8.65	8.60	8.50	8.45	8.35	8.25	8.15	8.15	8.05	7.95	7.85	
16.0			15.0m×8.00	7.35	7.25	7.20	7.10	7.05	6.95	6.85	6.75	6.75	6.65	6.55	6.45	
18.0				17.6m×6.50	6.25	6.15	6.05	6.00	5.90	5.80	5.70	5.65	5.60	5.50	5.40	
20.0					5.45	5.35	5.25	5.15	5.10	5.00	4.90	4.85	4.75	4.65	4.55	
22.0					20.2m×5.35	4.70	4.60	4.50	4.40	4.30	4.20	4.20	4.10	4.00	3.90	
24.0						22.8m×4.50	4.05	4.00	3.90	3.80	3.70	3.65	3.55	3.45	3.35	
26.0							25.4m×3.75	3.55	3.45	3.35	3.25	3.20	3.10	3.00	2.90	
28.0								3.15	3.05	2.95	2.85	2.80	2.70	2.55	2.45	
30.0									2.75	2.65	2.50	2.45	2.30	2.20	2.10	
32.0										30.6m×2.65	2.35	2.20	2.10	2.00	1.75	
34.0											33.2m×2.15	1.95	1.85	1.75	1.60	
36.0												35.8m×1.75	1.60	1.50	1.35	1.25

For notes, refer to those on page 8.

●PCSA rating (Main Boom in 360° Working Area.)

The rated loads, listed are determined according to PCSA (Power Crane and Shovel Association in U.S.A.) and do not exceed 75% of tipping load on condition that the machine is stationed on firm, level ground. Units: 10³ kg

Working Radius (m)	Boom Length (m)															
	10	13	16	19	22	25	28	31	34	37	40	43	46	49	52	
3.5	55.00	3.7m×55.00														
4.0	49.25	49.05	4.4m×42.10													
4.5	40.65	40.60	40.50													
5.0	34.40	34.40	34.30	34.30												
5.5	29.85	29.75	29.65	29.65	29.30											
6.0	26.30	26.20	26.15	26.10	26.05	6.1m×25.30	6.7m×22.20									
7.0	21.20	21.10	21.00	21.00	20.90	20.85	20.80	7.3m×19.70	7.8m×17.70							
8.0	17.75	17.60	17.55	17.50	17.40	17.35	17.30	17.25	17.15	8.4m×15.95						
9.0	14.70	15.10	15.00	14.95	14.85	14.80	14.70	14.65	14.60	14.50	14.45	9.6m×13.25				
10.0	9.8m×12.05	13.15	13.10	13.00	12.95	12.90	12.80	12.75	12.65	12.60	12.50	12.45	10.1m×12.15	10.7m×10.30	11.3m×9.00	
12.0		10.30	10.35	10.25	10.20	10.15	10.05	10.00	9.90	9.80	9.70	9.70	9.60	9.50	8.80	
14.0		12.4m×9.50	8.45	8.40	8.30	8.25	8.15	8.15	8.05	7.95	7.85	7.85	7.75	7.65	7.55	
16.0			15.0m×7.70	7.05	6.95	6.90	6.85	6.80	6.70	6.60	6.50	6.50	6.40	6.30	6.20	
18.0				17.6m×6.25	6.00	5.90	5.80	5.75	5.65	5.60	5.50	5.45	5.35	5.30	5.20	
20.0					5.25	5.15	5.05	4.95	4.90	4.80	4.70	4.65	4.55	4.45	4.40	
22.0					20.2m×5.15	4.50	4.40	4.35	4.25	4.15	4.05	4.05	3.95	3.85	3.75	
24.0						22.8m×4.30	3.90	3.85	3.75	3.65	3.55	3.50	3.40	3.30	3.20	
26.0							25.4m×3.60	3.40	3.30	3.20	3.10	3.10	3.00	2.90	2.80	
28.0								3.05	2.95	2.85	2.75	2.70	2.60	2.50	2.40	
30.0									2.65	2.55	2.40	2.40	2.25	2.20	2.10	
32.0										30.6m×2.55	2.25	2.15	2.10	2.00	1.75	
34.0											33.2m×2.10	1.95	1.85	1.75	1.60	
36.0												35.8m×1.75	1.60	1.50	1.35	1.25

For notes, refer to those on page 8.



● **BS rating (Main Boom in 360° Working Area.)**

The rated loads are determined according to BS (British Standard, 1981) and the machine is stationed on firm level ground.

Units : 10³ kg

Working Radius (m)	Boom Length (m)													
	10	13	16	19	22	25	28	31	34	37	40	43	46	49
3.5	55.00	3.7m×55.00												
4.0	51.20	51.00	4.4m×43.80											
4.5	42.30	42.20	42.15											
5.0	35.80	35.75	35.65	35.65										
5.5	31.50	30.95	30.85	30.85	30.45									
6.0	27.35	27.25	27.20	27.15	27.10	6.1m×26.30	6.7m×23.10							
7.0	22.05	21.95	21.85	21.85	21.75	21.70	21.65	7.3m×20.50	7.8m×18.40					
8.0	18.45	18.30	18.25	18.20	18.10	18.05	18.00	17.95	17.85	8.4m×16.60				
9.0	15.30	15.70	15.60	15.55	15.45	15.40	15.30	15.25	15.20	15.10	15.00	9.6m×13.80		
10.0	9.8m×12.55	13.70	13.60	13.50	13.45	13.40	13.30	13.25	13.15	13.10	13.00	12.95	10.1m×12.65	10.7m×10.70
12.0		10.70	10.75	10.65	10.60	10.55	10.45	10.40	10.30	10.20	10.10	10.10	10.00	9.90
14.0		12.4m×9.90	8.80	8.75	8.65	8.60	8.50	8.45	8.35	8.25	8.15	8.15	8.05	7.95
16.0			15.0m×8.00	7.35	7.25	7.20	7.10	7.05	6.95	6.85	6.75	6.75	6.60	6.50
18.0				17.6m×6.50	6.25	6.15	6.05	6.00	5.90	5.80	5.65	5.60	5.55	5.45
20.0					5.45	5.35	5.25	5.15	5.05	4.95	4.85	4.80	4.70	4.50
22.0					20.2m×5.35	4.70	4.55	4.45	4.35	4.25	4.15	4.10	4.00	3.90
24.0						22.8m×4.45	4.00	3.95	3.85	3.70	3.60	3.55	3.45	3.35
26.0							25.4m×3.70	3.45	3.35	3.25	3.15	3.10	3.00	3.85
28.0								3.10	2.95	2.85	2.75	2.70	2.60	2.45
30.0									2.65	2.55	2.40	2.35	2.20	2.15
32.0									30.6m×2.55	2.25	2.10	2.05	1.95	1.85
34.0										33.2m×2.05	1.90	1.80	1.70	1.55
36.0											35.8m×1.70	1.60	1.50	1.35

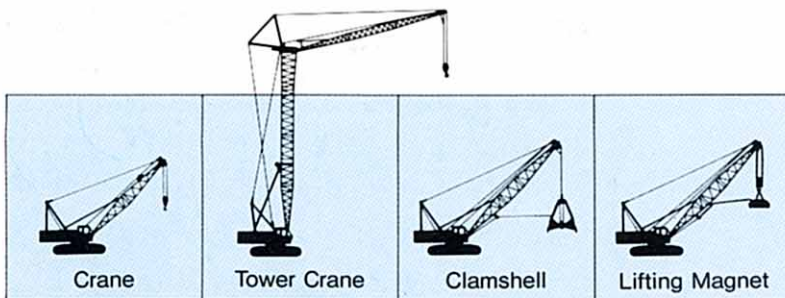
NOTE:

- To calculate the maximum load that can actually be lifted, deduct weight of all lifting accessories, such as main hook, from figures shown above.
- Working radius is the horizontal distance from the swing center to the center of gravity of a lifted load.
- The counterweight is 18 700 kg. (Two pieces)
- Be sure to fully extend the side frames before operating the machine.

5. Correlations between the number of falls, maximum rated loads, hook weights are shown in the table below.

Hook Capacity (kg)	Hook Weight (kg)	Maximum Rated Load (10 ³ kg)								
		9	8	7	6	5	4	3	2	1
55 000	700	55.0	52.0	45.5	39.0	32.5	26.0	19.5	13.0	—
30 000	360					30.0	26.0	19.5	13.0	—
15 000	320							15.0	13.0	—
6 500	260									6.5

Front-end Attachments Available.



This catalog is not applicable to the European area.
The machine shown may vary according to territory Specifications.
Specifications are subject to change without notice.