

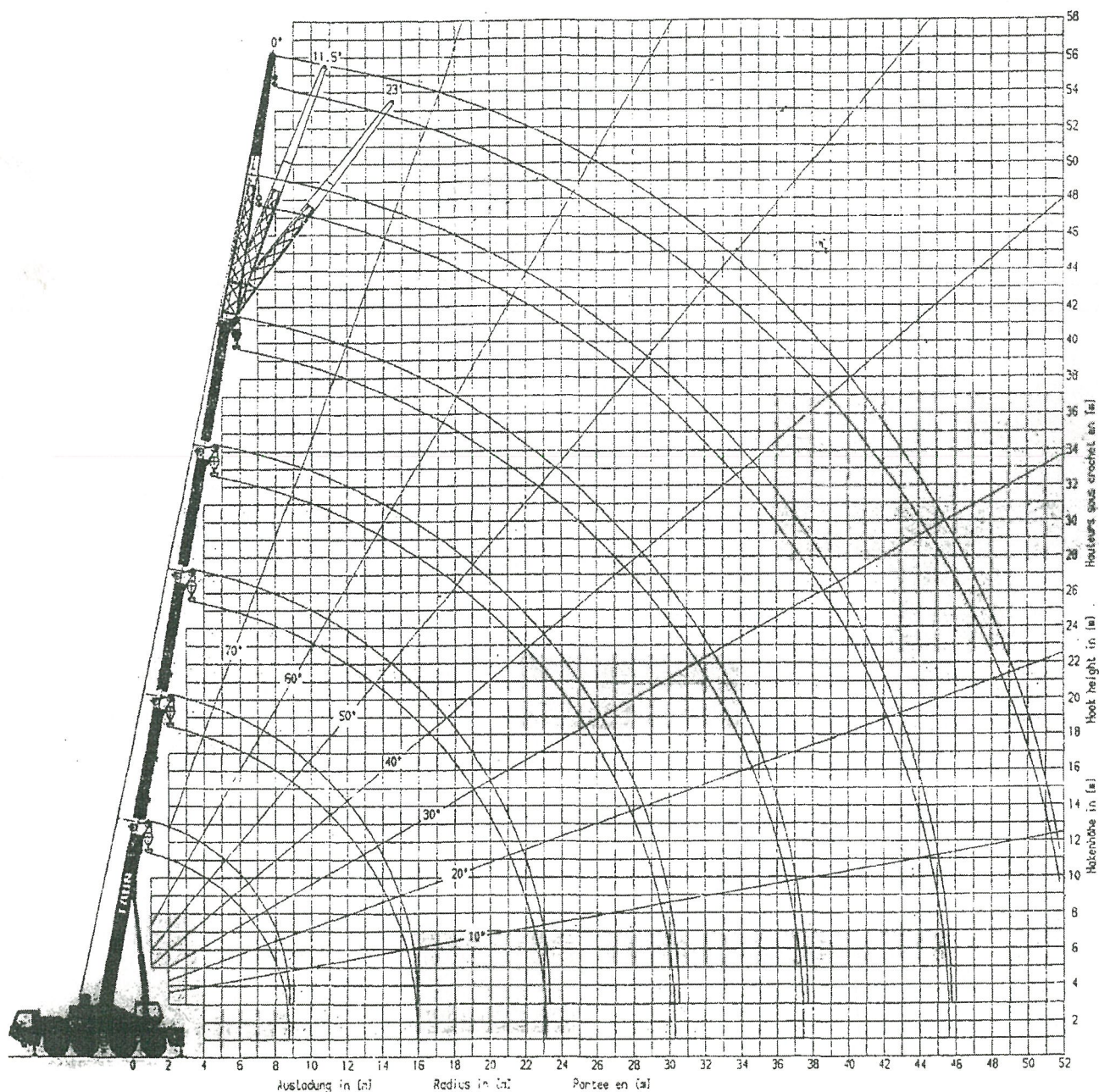


# Hakenhöhen

# Hook heights

# Hauteurs sous crochet

FAUN RTF 60-4





# Tragfähigkeiten

FAUN RTF 60-4

③ Tragfähigkeit in t, am Teleskopausleger, Gegengewicht 3,30 t, Arbeitsbereich: 360°, abgestützt

# Lifting capacities

③ Lifting capacity in metric tons, on telescoping boom, counterweight 3,30 t, Slewing range: 360°, with outriggers

# Capacités de levage

③ Charges sur la flèche télescopique, en t, contrepoids 3,30 t, Rotation: 360°, grue calée

Auslad. Radius Portée (m)	③ Auslegerlängen/Boom lengths/Longueurs de flèche												Auslad. Radius Portée (m)	
	10.30 m		17.50 m		24.60 m		31.80 m		31.80 m		39.00 m			
	DIN	85%	DIN	85%	DIN	85%	DIN	85%	DIN	85%	DIN	85%		
3.0	50.00	55.00												3.0
3.5	47.00	50.00												3.5
4.0	43.30	47.50	28.00	32.00										4.0
4.5	40.00	42.80	28.00	32.00										4.5
5.0	36.40	39.00	28.00	32.00	19.00	21.00								5.0
6.0	30.00	32.20	28.00	30.00	19.00	20.50	11.00	12.00	10.00	10.90				6.0
7.0	24.10	25.90	23.40	25.70	17.80	19.25	11.00	12.00	10.00	10.90	7.70	8.50		7.0
8.0	19.00	20.50	18.80	20.30	16.70	18.10	11.00	12.00	10.00	10.90	7.70	8.50		8.0
9.0			15.30	16.60	15.20	16.50	11.00	12.00	9.50	10.40	7.70	8.50		9.0
10.0			12.70	13.80	12.65	13.80	10.40	11.40	8.70	9.50	7.70	8.50		10.0
11.0			10.80	11.80	10.70	11.70	9.80	10.75	8.00	8.80	7.40	8.15		11.0
12.0			9.10	10.00	9.10	10.00	9.00	9.90	7.40	8.15	7.10	7.85		12.0
13.0			7.80	8.60	7.70	8.50	7.60	8.40	6.90	7.60	6.70	7.40		13.0
14.0			6.70	7.45	6.60	7.35	6.50	7.25	6.50	7.20	6.50	7.20		14.0
15.0			5.80	6.50	5.70	6.40	5.60	6.30	6.10	6.75	6.20	6.90		15.0
16.0					4.90	5.55	4.90	5.55	5.70	6.35	5.60	6.25		16.0
17.0					4.30	4.90	4.20	4.80	5.10	5.70	4.90	5.50		17.0
18.0					3.70	4.25	3.70	4.25	4.60	5.15	4.40	5.00		18.0
19.0					3.30	3.85	3.20	3.75	4.10	4.65	3.90	4.45		19.0
20.0					2.80	3.30	2.80	3.30	3.60	4.10	3.40	3.90		20.0
21.0					2.50	3.00	2.40	2.90	3.20	3.70	3.00	3.50		21.0
22.0					2.10	2.55	2.00	2.45	2.90	3.35	2.70	3.15		22.0
23.0					1.80	2.25	1.70	2.15	2.60	3.05	2.40	2.85		23.0
24.0							1.50	1.95	2.30	2.70	2.10	2.55		24.0
25.0							1.20	1.60	2.00	2.40	1.80	2.20		25.0
26.0							1.00	1.40	1.80	2.20	1.60	2.00		26.0
27.0							0.80	1.20	1.60	2.00	1.40	1.80		27.0
28.0							0.60	1.00	1.40	1.75	1.20	1.60		28.0
29.0							0.40	0.75	1.20	1.55	1.00	1.35		29.0
30.0							0.30	0.65	1.10	1.45	0.90	1.25		30.0
31.0											0.70	1.05		31.0
32.0											0.60	0.95		32.0
33.0											0.50	0.85		33.0
34.0											0.40	0.70		34.0

## Teleskopierzustände/Telescoping conditions/Etats de télescopage

Teleskop 1	0 x	1/3 x	2/3 x	1 x	2/3 x	1 x
Teleskop 2	0 x	1/3 x	2/3 x	1 x	2/3 x	1 x
Teleskop 3	0 x	1/3 x	2/3 x	1 x	2/3 x	1 x
Teleskop 4	0 x	0 x	0 x	0 x	1 x	1 x



## Tragfähigkeiten

## Lifting capacities

## Capacités de levage

**FAUN RTF 60-4**

② Tragfähigkeit in t, an der Auslegerverlängerung  
Gegengewicht 8,40 t  
Arbeitsbereich: 360°, abgestützt

② Lifting capacity in metric tons, on boom extension,  
counterweight 8,40 t  
Slewing range: 360°, with outriggers

② Charges en t, sur la rallonge de flèche, contrepoids 8,85 t  
Rotation: 360°, grue calée

④ Tragfähigkeit in t, an der Auslegerverlängerung,  
Gegengewicht 3,30 t  
Arbeitsbereich: 360°, abgestützt

④ Lifting capacity in metric tons, on boom extension,  
counterweight 3,30 t  
Slewing range: 360°, with outriggers

④ Charges en t, sur la rallonge de flèche, contrepoids 3,30 t  
Rotation: 360°, grue calée

Auslad. Radius Portée (m)	② Auslegerverlängerung 9,80 m/Boom extension 9,80 m/Rallonge de flèche 9,80 m										Auslad. Radius Portée (m)		
	0°		11,5°		23°		0°		11,5°			23°	
	DIN	85%	DIN	85%	DIN	85%	DIN	85%	DIN	85%		DIN	85%
8.0													8.0
9.0	4.00	4.55					4.00	4.55					9.0
10.0	4.00	4.55					4.00	4.55					10.0
11.0	4.00	4.55	3.60	4.10			4.00	4.55	3.60	4.10			11.0
12.0	4.00	4.55	3.60	4.10			4.00	4.55	3.60	4.10			12.0
13.0	3.94	4.48	3.60	4.10	3.20	3.70	3.94	4.48	3.60	4.10	3.20	3.70	13.0
14.0	3.88	4.42	3.60	4.10	3.20	3.70	3.88	4.42	3.60	4.10	3.20	3.70	14.0
15.0	3.82	4.35	3.60	4.10	3.20	3.70	3.82	4.35	3.60	4.10	3.20	3.70	15.0
16.0	3.76	4.29	3.60	4.10	3.20	3.70	3.76	4.29	3.60	4.10	3.20	3.70	16.0
17.0	3.70	4.23	3.46	3.97	3.13	3.60	3.70	4.23	3.46	3.97	3.13	3.60	17.0
18.0	3.64	4.16	3.33	3.83	3.06	3.52	3.64	4.16	3.33	3.83	3.06	3.52	18.0
19.0	3.43	3.94	3.18	3.66	2.95	3.39	3.43	3.94	3.18	3.66	2.95	3.39	19.0
20.0	3.22	3.70	3.03	3.48	2.84	3.27	3.22	3.70	3.03	3.48	2.84	3.27	20.0
21.0	3.03	3.48	2.90	3.34	2.72	3.13	3.03	3.48	2.90	3.34	2.72	3.13	21.0
22.0	2.85	3.28	2.77	3.19	2.60	2.99	2.85	3.28	2.77	3.19	2.60	2.99	22.0
23.0	2.70	3.11	2.65	3.06	2.50	2.88	2.66	3.06	2.65	3.05	2.50	2.88	23.0
24.0	2.54	2.92	2.54	2.92	2.40	2.76	2.37	2.73	2.54	2.92	2.40	2.76	24.0
25.0	2.41	2.77	2.42	2.78	2.31	2.66	2.11	2.43	2.32	2.67	2.31	2.66	25.0
26.0	2.28	2.62	2.30	2.65	2.23	2.56	1.87	2.15	2.07	2.38	2.23	2.56	26.0
27.0	2.17	2.50	2.19	2.52	2.15	2.47	1.66	1.91	1.84	2.12	2.00	2.30	27.0
28.0	2.06	2.37	2.08	2.39	2.07	2.38	1.46	1.68	1.63	1.87	1.77	2.04	28.0
29.0	1.95	2.24	1.98	2.28	2.00	2.30	1.27	1.46	1.43	1.64	1.57	1.81	29.0
30.0	1.85	2.13	1.88	2.16	1.94	2.23	1.10	1.27	1.25	1.44	1.38	1.59	30.0
31.0	1.76	2.02	1.80	2.07	1.85	2.13	0.94	1.08	1.08	1.24	1.20	1.38	31.0
32.0	1.68	1.93	1.72	1.98	1.76	2.02	0.80	0.92	0.93	1.07	1.04	1.20	32.0
33.0	1.58	1.82	1.64	1.89	1.68	1.93	0.66	0.76	0.78	0.90	0.88	1.01	33.0
34.0	1.43	1.64	1.54	1.77	1.61	1.85	0.53	0.61	0.65	0.75	0.74	0.85	34.0
35.0	1.29	1.48	1.39	1.60	1.48	1.70			0.52	0.60	0.60	0.69	35.0
36.0	1.16	1.33	1.26	1.45	1.34	1.54					0.48	0.55	36.0
37.0	1.04	1.20	1.13	1.30	1.20	1.38							37.0
38.0	0.92	1.06	1.00	1.15	1.07	1.23							38.0
39.0	0.81	0.93	0.89	1.02	0.94	1.08							39.0
40.0	0.71	0.82	0.78	0.90	0.83	0.95							40.0
41.0	0.61	0.70	0.67	0.77	0.71	0.82							41.0
42.0	0.52	0.60	0.57	0.66	0.61	0.70							42.0
43.0					0.50	0.58							43.0