



SANY Overseas

Address: 319 Chuanda Road, Chuansha Economic Park, Pudong, Shanghai, China

Postcode: 201200

Website: <http://www.sanygroup.com>

Consultation Hotline: (+86)21-58592902

Email: sanyservice@sany.com.cn

Materials and specifications are subject to change without further notice in accordance with constant technical innovations.
Photos may include additional equipment.

Copyright ©2010 SANY Group Co.,Ltd. All rights reserved.

Printed in China

SAC12000 All-terrain Crane

1200t Lifting Capacity



1 Outstanding Performance

SAC12000 all-terrain crane adopted 9-axle chassis with the function of self-assembly, self-dismantling. Counterweight, main boom have the system of self disassembly and assembly. It could travel on the road with outriggers, luffing cylinder, turntable and winches. It has multi operation mode with strong lifting performance.

2 Safety and Reliability

Top quality components and design ensure safety of crane operation.

3 Comfort and Convenience

Easy assembly and operation, spacious driver's cab and operator's cab offer comfort and convenience.

4 Overview

Critical parts that mainly comprise SAC12000 all-terrain cranes.

5 Product Line

Unique and trend-leading cranes.

6 Service

All for customers—Not only a simple promise.



1 Outstanding Performance



Remarkable lifting capacity

The boom, including one base boom and 7 telescopic boom sections, utilizes single cylinder cross pin telescopic mechanism. It can telescope controlled by computer to 102m is fully extended.

With boom extension, fixed jib and towered jib for option, max. lifting height of the crane is up to 180m.

The maximum rated lifting capacity is 12000 KN and the maximum lifting moment is 3400t·m. The basic boom is 18.6m long and full-extended boom 102m., powerful lifting capacity.

Different thick upper plate and lower plate, connecting boom sections, main boom, swing table, frame and outrigger of imported high-tensile steel greatly reduce the weight while ensuring strong lifting capacity.

The superlift technology enormously improves the crane performance while not increases much weight and configuration. The performance applying such technology can be improved by 50% at least.

The overall machine has multiple operation modes such as boom of 4 boom sections, 8 boom sections, boom extension, super lifting, towered boom, elevation boom, fixed jib, counterweight combination and outrigger span combination and etc. make it possible to fulfill the demands in different worksites and operation conditions.

Radioactive telescopic outriggers and fifth and sixth outriggers make transferring simple and bearing capacity strong.

The five-mode suspension system and six-mode steering system improve its maneuverability and realize steering on road, transmission and level movement.





Advanced technologies

It has obtained 26 pieces of patents, 7 of which are invention patents.

The application of advanced R&D strategies like full three-dimensional design, integrated FEM analysis, AMESIM system and ADAMS combination simulations enables computer testing for thousands of working conditions to ensure outstanding performance.

Main components of imported high-tensile steel, adopt innovated structures, reducing the overall machine weight.

2 Safety and Reliability

ZF-12 gear gearbox chassis, Kessler transfer case and axle are foundation for stable and reliable transferring. Multiple aux. braking mode dramatically improves brake performance.

The adjustable height and hydraulic lock oil-pneumatic suspension system can automatically adjust the frame to level to improve safety for the vehicle when traveling on uneven roads.

Pump, motor, valve, wire rope, winch reducer, swing bearing are from international brands which guarantees outstanding performance of the machine.

The original imported 290kW and 480kW Euro III Benz engine for superstructure and chassis is energy-saving and environment-friendly.

CAN-Bus all-digital network control technology is capable of complete display of equipment parameters, working parameters and all sided fault diagnosis and alarm function.

Double slew mechanism for easy maintenance stabilizes slewing. Closed lifting system pump and motor are international brands, improving safety and reliability.

The intelligent control system, composed of chassis safety control module, power system optimization module, automatic arms stretching and retracting control module, moment restriction module, simultaneous control module, work planning module, simulated hoisting module, self-diagnosis module, etc, guarantees the intelligent control system.



The crane applies multiple pumps and multiple circuits closed system, which can make the transmission more accurate and reduce the energy consumption. The hydraulic system is an electric proportional control pump controlled variable system, providing power control and extreme load control functions. Its cooperation with the computer integrated control system can greatly improve the control performance of crane. The micro movement performance is satisfied. Such technologies can ensure safety and reliability.

The overall machine with capability of automatic adjusting level, electric-hydro servo steering, moment limiter, false diagnosis, simulation of loading condition warrants safe and reliable traveling and operation.

Hydraulic system adopts multi-pump multi-circuit variable system for good controlling.

Hoisting and swing system utilize closed circuit hydraulic system, guaranteeing efficiency, stability and energy friendliness.

Optimization power system, equipped with ZF TC-TRONIC fully automatic torque converter and imported eddy current retarder, improves crane's safety, economy and convenience.



3 Comfort and Convenience

Easy to assemble and dis-assemble

Self dismantling of main boom and counterweight, setup positioning mechanism ensure quick installation.

Variable combination of self-dismantling counterweight adopts soft wire rope to connected swing table for easy and simple installation.

The self-disassembly structure is a frame platform, which can be lifted, moved and swung with 10 oil cylinders. It is easy to align the suspension arm and rotary table to guarantee the efficiency.

The imported lubrication system makes easy maintenance for superstructure. Auxiliary winch equipped with pulling mechanism ease hook installation and lines changing. Counterweight and swing table are connected with mechanic soft devices, easy for self-assembly and self-dismantling.

Comfort and Convenience

Driver's cab and operator's cab are manufactured by Sany. Their ergonomic design, original and unique, clear and simple dashboard, convenient touchable control panel provides drivers and operators with comfort.

customer portal", new remote monitoring system, allows remote fault diagnosis and remote requirement management.

4 Overview

Main, auxiliary lifting and tower arm luffing mechanism

The variable hydraulic motor from Bosch Rexroth drives the planet gear speed reducer to control the lifting and falling of the main/auxiliary winch.

Hydraulic system

The main hydraulic elements are Bosch Rexroth products. The lifting and slewing are closed circuit hydraulic systems.

Control system

It adopts integrated PLC, CAN-BUS control network and combines with ordinary electric system to realize logic control and electro-hydraulic proportional control function.

Superstructure engine

6-cylinder water-cooled diesel engine OM905LA; power: 290kW/1800rpm, maximum torque: 1850Nm/1300rpm, fuel tank volume 300L.

Operator's cab

It adopts an all-enclosed steel frame structure and is able to tilt, lift, and pitch.

Outrigger

The radio controlled telescoping outrigger transmits forces simply with good effect.

Chassis engine

8-cylinder water cooled diesel engine OM502LA, rated power: 480kW/1800rpm, maximum torque: 2800Nm/ 1300rpm, fuel tank volume 700L.

Suspension

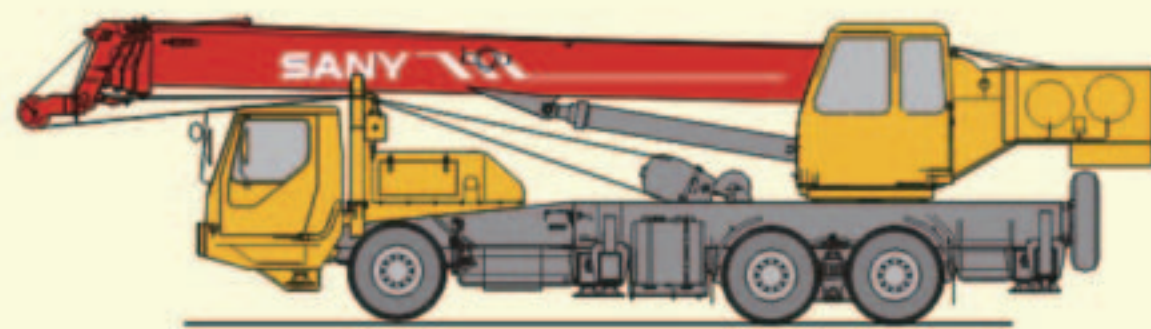
All the axle suspension devices are height-adjustable hydro-pneumatic suspension with hydraulic locking.

Transmission system

ZF 12-shift transmission box with torque converter and automatic AS-TRONIC gear shifting system, 12 forward gears, 2 reverse gears.



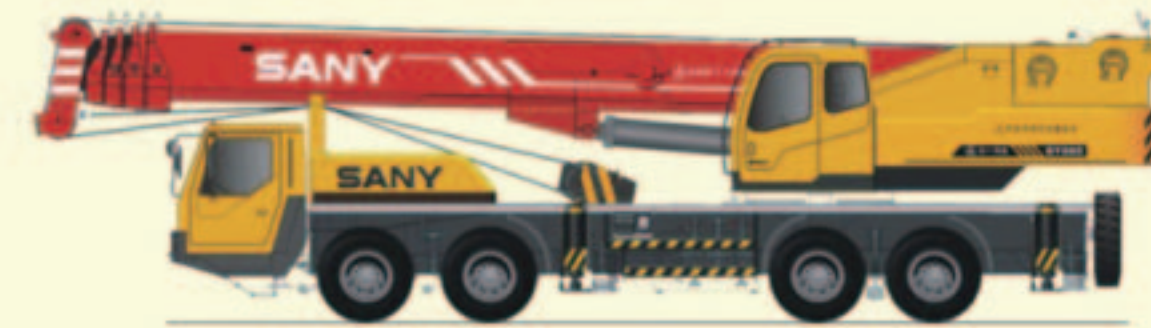
5 Product Line



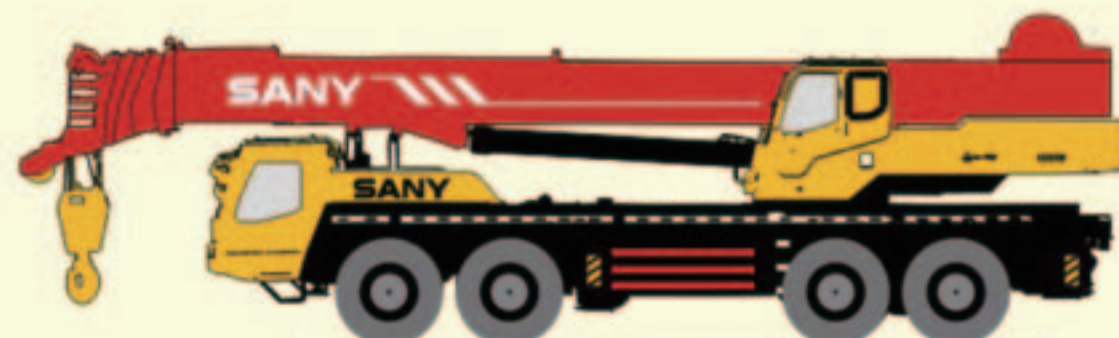
QY20C
Max Rated Payload: 20t
Main Boom: 4 Sections, 10.5-32.55m Extended
Chassis: 6x4x2



QY25C
Max Rated Payload: 25t
Main Boom: 4 Sections, 10.65-33.5m Extended
Chassis: 6x4x2



QY50C
Max Rated Payload: 55t
Main Boom: 5 Sections, 11.5-42.5m Extended
Chassis: 8x4x4



STC75
Max Rated Payload: 75t
Main Boom: 5 Sections, 11.8-45m Extended
Chassis: 8x4x4



QY100
Max Rated Payload: 100t
Main Boom: 5 Sections, 13.5-52m Extended
Chassis: 12x6x8



QY130
Max Rated Payload: 130t
Main Boom: 6 Sections, 13.3-60m Extended
Chassis: 12x6x8



STC200
Max Rated Payload: 20t
Main Boom: 4 Sections, 10.5-32.55m Extended
Chassis: 6x4x2



STC250
Max Rated Payload: 25t
Main Boom: 4 Sections, 10.65-33.5m Extended
Chassis: 6x4x2



STC250H
Max Rated Payload: 25t
Main Boom: 5 Sections, 10.5-39.5 Extended
Chassis: 6x4x2



STC500
Max Rated Payload: 55t
Main Boom: 5 Sections, 11.5-42.5m Extended
Chassis: 8x4x4



STC500E
Max Rated Payload: 55t
Main Boom: 5 Sections, 11.5-42.5m Extended
Chassis: 8x4x4



STC750
Max Rated Payload: 75t
Main Boom: 5 Sections, 11.8-45m Extended
Chassis: 8x4x4



STC1000
Max Rated Payload: 100t
Main Boom: 5 Sections, 13.5-52m Extended
Chassis: 12x6x8



STC1300
Max Rated Payload: 130t
Main Boom: 6 Sections, 13.3-60m Extended
Chassis: 12x6x8



QAY220
Max Rated Payload: 220t
Main Boom: 6 Sections, 13.5-62m Extended
Chassis: 10x8x10



SAC1800
Max Rated Payload: 180t
Main Boom: 6 Sections, 13.5-62m Extended
Chassis: 10x8x10



SAC2200
Max Rated Payload: 220t
Main Boom: 6 Sections, 13.5-62m Extended
Chassis: 10x8x10



SAC12000
Max Rated Payload: 1200t
Main Boom: 8 Sections, 18.6-102m Extended
Chassis: 18x8x18



SRC550
Max Rated Payload: 55t
Main Boom: 4 Sections, 11.25-34.5m Extended
Chassis: 4x4x4



SRC550H
Max Rated Payload: 55t
Main Boom: 5 Sections, 11.5-42.5m Extended
Chassis: 4x4x4

6 Service

Efficient delivery Parts Service

- Dispatch urgent parts within 48 hours
- An inventory of over 100,000 parts totaling more than \$80 million
- Global fast logistics system
- Genuine parts guaranteed



A quality technical care provider

Technical Support

- 24/7 hotline service
- Tailored advisory service for every customer
- Strict product inspection during delivery
- Respond on call in 15 minutes
- On-site support throughout large projects
- Free labor for maintenance service within 3000 machine hours
- Free expert inspection once every quarter within the warranty period



● Parts warehouses
● Service Network
Service Network/Parts warehouses



Get the most from your investment

Knowledge Transfer

- Offer up to 7 days practical training to your operators for free
- Provide 120 hours/year product maintenance skill and trouble shooting training to your engineers



Always with you wherever you are.

