



102 HP



11,000 lbs.

305 c

Multihandler

green line Material Handling Machine



SENEBOGEN[®]

LEADING THROUGH INNOVATION

- Excellent visibility with an operator's eye level at over 13'
- Lifting height up to 29'6"
- Maintenance-friendly design

- 3 steering modes for optimum maneuverability
- Single joy stick control
- Adjustable steering column
- State-of-the-art load-sensing hydraulic system

Specifications



Engine

- 4 cylinder, water cooled, Deutz BF4M2012 diesel engine
- Output as per DIN/ISO: 102 HP at 2200 rpm
- Radiator fan is hydraulically driven and is reversible to clean out debris from radiator
- Equipped with engine intercooler
- Dry air filter with cyclone prefilter, safety element and pollution indicator
- Fuel tank capacity: 77 gallons
- Electrical system: 24 volt, 2 x 12 volt high performance batteries



Drive System

- All Wheel Drive
- All Wheel Steering with 3 separate steering modes
- Closed circuit hydrostatic drive with variable displacement pump combined with variable displacement hydraulic motor
- Hydrostatic braking wear-free and safe
- Travel Speed: 20 mph
- Operator selected 100% differential lock on both axles giving optimum traction
- 2-circuit servo brake system with additional safety brake as parking brake
- Tires: 405/70-20 pneumatic tires
- Option:
- Foam filled or solid rubber tires



Hydraulic System

- Computer free load-sensing hydraulic system with energy saving flow on demand control
- All working functions can be operated simultaneously and be individually controlled very precisely due to the independent and proportional split of the oil feed from the variable displacement pump
- Hydraulic system designed for low pressure losses and heat generation by large diameter piping and hoses as well as large control valves
- 3 pumps directly mounted to the engine, one for working hydraulics, one for drive system and one auxiliary pump

- Flow rate: 44 gpm
- Working pressure: 4970 psi
- Hydraulic tank capacity: 25 gallons

- Flow return oil filter with extended change intervals designed to protect the hydraulic system, extending the life of all components and reducing the down time of the machine as well as the maintenance and repair costs

- System provides automotive feel to drive with a combination brake and inching pedal for precise speed control required in various applications



Operating Weight

- Basic 305 Multihandler with hydraulic attachment quick coupler and forks

Approximate weight 25,350 lbs.
(305 XL approximately 25,900 lbs.)



Working Equipment

- 2-section boom designed specifically for heavy duty application
- Heavy duty sliding guides
- Safety lock valves on boom and lifting cylinders
- Hydraulic quick coupler for duty cycle application
- Auxiliary circuit with piping and hoses inside the boom

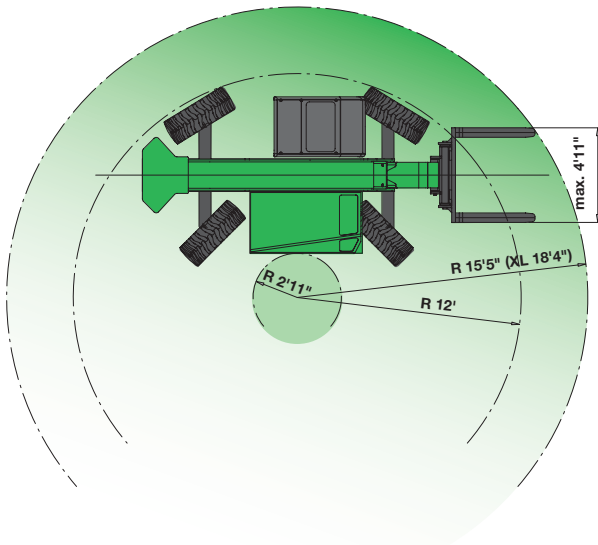


Operator's Cab

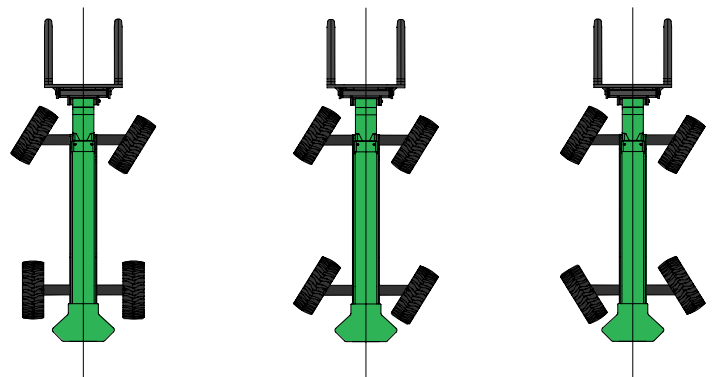
- Comfortable operator's cab, resiliently mounted
- Sound absorbing insulation
- Roomy compartment with excellent all-round visibility
- All-weather design with tinted safety glass
- Door window can be opened independent from the door
- Large skylight
- Sun visor
- Ergonomically designed seat with adjustable armrests and lumbar support
- Well laid-out instrument panel with ergonomically shaped joystick
- Adjustable air vents for optimum work environment
- 12 and 24 volt power supply
- Air conditioning
- AM/FM radio with cassette

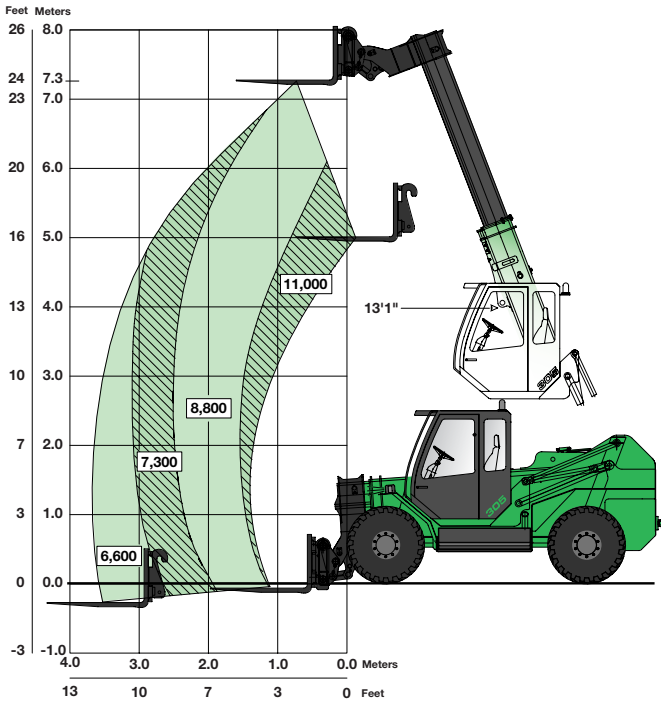
Certification according to regulations

Subject to technical modification

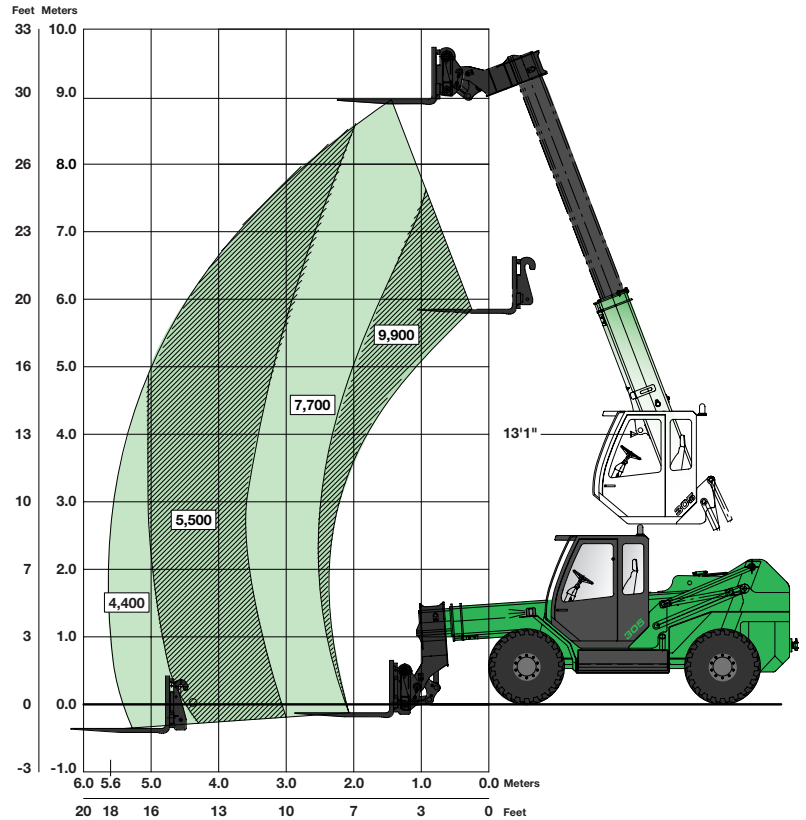


3 Steering Modes





Working area and rated loads 305 C

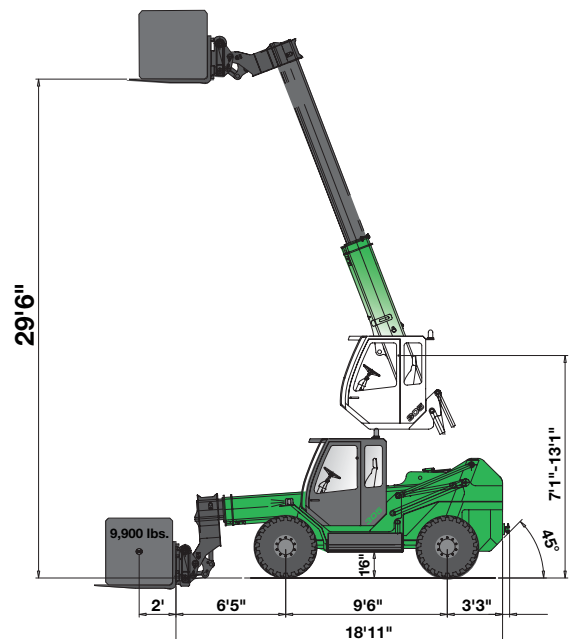
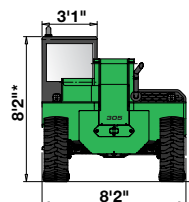
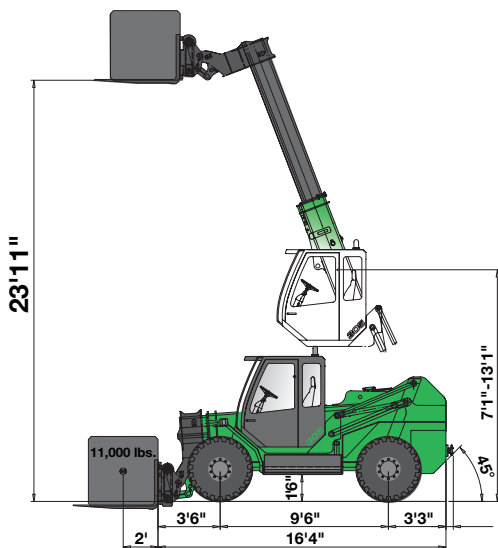


Working area and rated loads 305 XL

Notes:

1. The rated loads are based on 80% of tipping load (ISO 8313).
2. Rated lift capacities shown are with the machine equipped with carriage and pallet forks. The load center is 24" from the fork carriage. If other attachments are used, the weight of such attachments has to be deducted from the above loads.
3. The machine must be level on a firm surface with undamaged, properly inflated tires.
4. Machine specifications and stability are based on rated lift capacities at specific boom angles and boom lengths. (If specifications are critical, the proposed application should be discussed with your dealer.)
5. DO NOT exceed rated lift capacities loads, as unstable and dangerous machine conditions will result.

Machine Specifications



Overall height may reach 8'10" with additional lights, flashing beacon and 425/75/R20 tires

Depending upon tolerances, measurements may vary.





Working Attachments



Broom Sweeper



Bucket with hydraulic top clamp



Forklift



Orange Peel Grab



Light Material Bucket



Load Guard



Snow Plow



General purpose bucket
with and without teeth



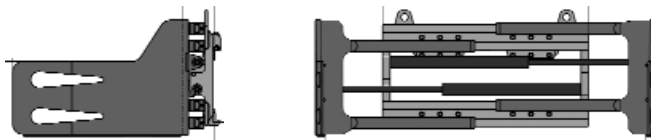
Log Grapple



Forklift with sideshift



Log and Lumber Forks



Bale Clamp



Comfortable operator's cab

- Advanced design, clear layout
- Low noise and vibration
- Excellent all-round visibility
- Fully adjustable seat
- Single joystick control
- Adjustable steering column
- Easy access

Large engine compartment

- Powerful water-cooled 102 HP Deutz diesel engine
- All service points are easily accessible from ground level
- Radiator fan is hydraulically driven and reversing feature makes it easy to clean out debris from the cooling system



Powerful hydraulic system

- Load-sensing hydraulic system with axial piston pump
- Designed for low pressure losses and heat generator with large diameter piping and hoses
- Special filtration system designed to protect hydraulic system reducing maintenance costs and maximizing uptime
- All wheel drive and steering with closed hydrostatic circuit system

Visibility, utility and maneuverability

- Hydraulically raised cab to over 13' provides excellent all-round visibility
- Hydraulic quick coupling system means fast changes between attachments for increased productivity
- All wheel drive combined with all wheel steering provides operators with 3 steering modes for a right turning radius. This makes it easy to get around tight corners and congested areas



SENNEBOGEN LLC
2835 Jeff Adams Drive, Suite H
Charlotte, NC 28206
Telephone (Toll Free) 1-877-309-0099
Fax: 704-347-8894
E-Mail: sales@sennebogen-na.com

www.sennebogen-na.com

Under our policy of continuous improvement, we reserve the right to change specifications and design without prior notice. The illustrations shown may include optional equipment.